

LOTBINIERE OR ST. GREGOIRE?
(submitted by Rick Friesen)

I recently acquired a Map Stamp (off-cover) with a squared circle cancellation that was advertised as "Lotbiniere, QUE" (the original owner had penciled in the town name on the back of the stamp). It is a partial strike, with "-UE" visible as the province and only "RE" visible as the last two letters of the town name (see illustration). Upon closer study, I believe this is an incorrect assignment and the strike is actually St. Gregoire, QUE, one of only 2 other Type II Quebec strikes that ends in "RE" (the other is St. Anne de Beaupre but the placement of the "RE" with respect to the right bars rules out this town).



There are three features of the strike that support assignment as St. Gregoire rather than Lotbiniere. First, the right side dot is adjacent to the top of the third right bar, consistent with the St. Gregoire proof strike in the handbook. The proof strike of Lotbiniere shows the right side dot in a very similar position adjacent to, but partially above, the third right bar. However, without access to comparative strikes, this is not a sufficient enough difference to make a definitive assignment as St. Gregoire.

Second, the placement of the E of "RE" more closely fits with an assignment as St. Gregoire. In the illustrated strike, one can see that the tip of the top horizontal bar of the E is near the bottom of the right side piece, and the tip of the bottom horizontal bar of the E is aligned with the bottom indicia bar. These details are consistent with the St. Gregoire proof strike. In the Lotbiniere proof strike, the tip of the top horizontal bar of the E lies near the middle of the right side piece, and the tip of the bottom horizontal bar of the E is well above the bottom indicia bar.

Finally, there is no year visible below the indicia bar. This observation would be expected for St. Gregoire – 2-line dates, with the year appearing above the top indicia bar, are the norm for St. Gregoire beginning in December 1895 according to the 5th edition handbook. This error is highly suggestive of a St. Gregoire cancel since a Lotbiniere strike without a year in the 3rd date line below the bottom indicia bar has not been reported.

Editor: Gary Arnold, 10533 Countryside Drive, Grand Ledge, MI 48837 forestgda@gmail.com

Chairman: Joe Smith #203 228 Pembina Avenue, Hinton AB T7V 0A5 mudquack@telusplanet.net

LOTBINIERE OR ST. GREGOIRE?

(Continued)

Taking these three observations together, I believe the cancellation was erroneously assigned as Lotbiniere and is actually a St. Gregoire strike – a key result since both are relatively rare strikes on the Map Stamp (2 off-cover strikes on map are listed as the known quantities of each in the 5th edition of the handbook). Assuming that this stamp was one of the 2 reported Lotbiniere strikes, the known quantities on the map stamp should be changed to reflect this finding: St. Gregoire 3 off-cover/0 on-cover; Lotbiniere 1 off-cover/2 on-cover.

If the current owners of Lotbiniere and St. Gregoire cancels on Map stamp could report in, it would help in confirming the known quantities. Please send the stamp information (time/date, whether they are off- or on-cover etc., with scans if possible) for these squared circle cancellations on Map to the newsletter editor, or myself, so that the handbook can be corrected if required.

As a final note, only 2 squared circle study group members have responded to my request for early/late dates on the Map Stamp that appeared in the last newsletter. I would appreciate any help or feedback that you have. As a continuation to that study, I would like to assemble a complete list of strikes for those towns for which 4 or fewer strikes on Map Stamp have been reported. If you have one of these cancels, please send the relevant information (town, date, indicia, whether the strike is an off-cover or on-cover strike) to me or to Gary Arnold who will forward the information to me.

FINDING A NEEDLE IN A HAYSTACK



A Study Group member, who requested to remain anonymous, recently made a remarkable find on eBay.

"I have the pleasure of announcing a probably hitherto unknown example of the Nassagaweya squared circle! I have never seen this town in any milieu except as a favor strike from the Postal Museum; I have one dating from 40+ years ago.

I noted this strike in a batch on eBay... the strike is light but it is unmistakable, showing "ASSAGAWEYA. I cannot make out the date."

(Editor note: The date has been subsequently determined to be -/AP 27/94, possibly in violet/purple ink. The strike represents an unreported month as well as the first reported strike on a 1 cent Small Queen.)

BNAPEX 2015

The Squared Circle Study Group meeting at BNAPEX 2015 was on Friday; five (5) Study Group members, Peter MacDonald, Vice President Study Groups, and one potential member attended. There was no formal program but the group had the opportunity to discuss a number of issues, including the posting of back issues of the ANNEX on the BNAPS web site and the distribution of the ANNEX via email.

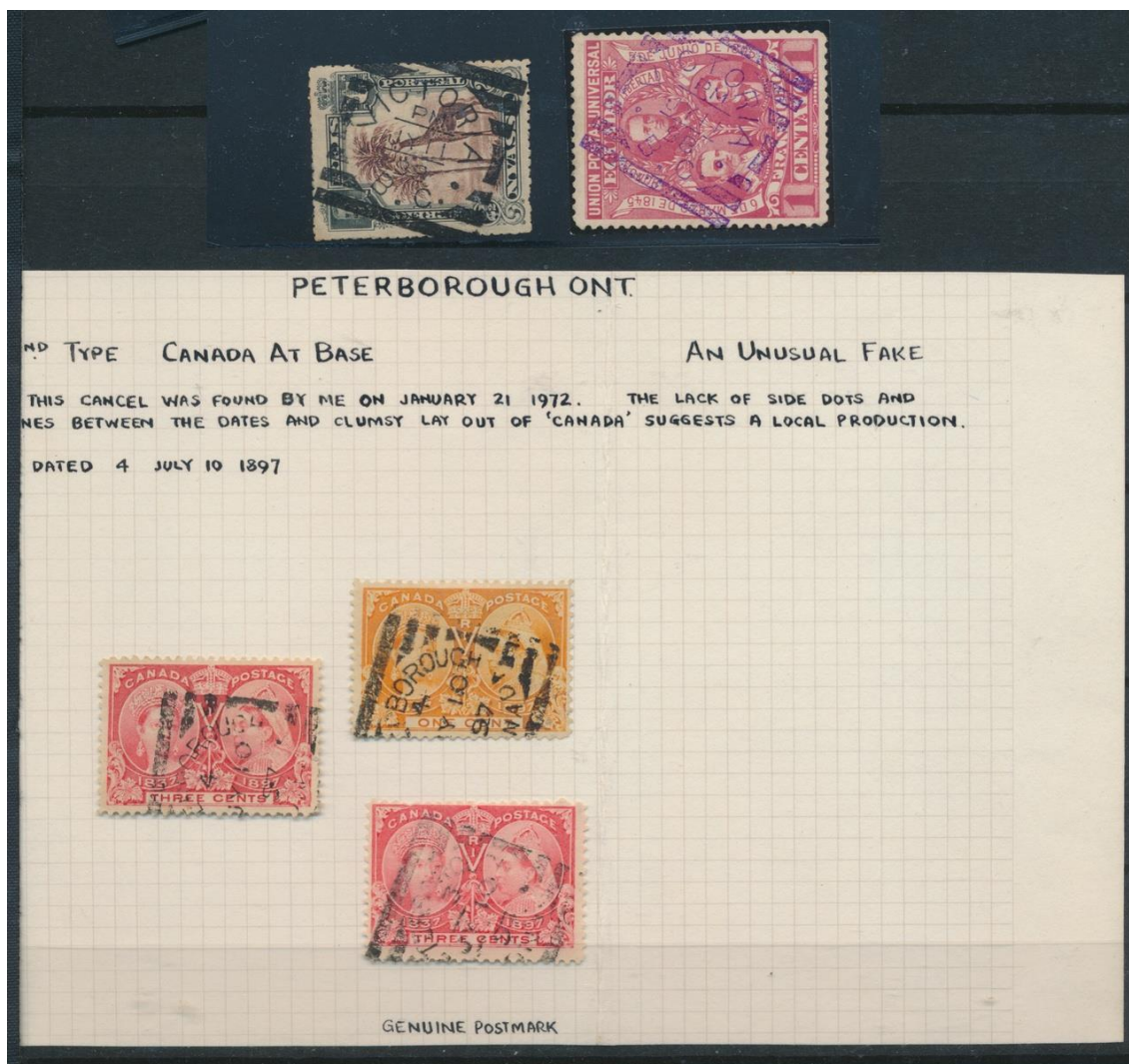
UPDATE: BACK ISSUES ANNEX NEWSLETTERS DIGITAL SCANS

The consensus of those attending the BNAPEX 2015 Study Group meeting was that it would be acceptable to post back issues of the ANNEX on the web site, provided that the various pages listing the Study Group members contact information was removed from the scans and that no members raised an objections to the postings.

Based upon the above and the lack of negative feedback received to date on previous discussions on this topic, we will proceed with posting the back issues on the BNAPS web site unless either Joe or I receive any objections from Study Group members prior to the first of next year.

BOGUS/FAKE SQUARED CIRCLE CANCELS

The item below was included in a recent Sparks Auction. Joe Smith noted that the lack of the side dots and inner bars may not necessarily indicate a fake cancel as sometimes legitimate strikes do not display them. Additional discussions on these bogus cancels are included in the Fourth Edition Handbook, beginning on pages 397.



NEW REPORTS AND UPDATES

LINDSAY, ONT – A strike on an advertising post card, dated PM/MY 1/05, which replaces the previous second latest reported date of ?/AP 29/05.

LONDON, ONT. TYPE 2 – SON cancel on 5 Cent War Issue (Scott 255); strike is dated 17/JUL 13/49; unreported on this stamp.

MERRICKVILLE, ONT. – Strike on 1 Cent postal stationery envelope (U9) cut square, dated PM/JA 2/00; unreported use of a small “o” and unreported on this envelope.

NIAGARA FALLS SOUTH, ONT. – Strike on 2 cent Numeral piece; dated -/JA 1/00; unreported year.

OSHAWA, ONT. – Strike on 2 cent Small Queen dated -/FE 15/94; unreported on this stamp.

ROCKTON, ONT. – Strike dated -/FE -/94; blank date slot.

SMITHS FALLS, ONT. - Strike dated 1/JY 13/00; unreported time mark for JY 13th date.

TAVISTOCK, ONT. – Strike dated -/JU 29/95 on a 3 Cent postal stationery (U6) cut square; unreported on this envelope.

MEDICINE HAT, ASSA. – Strike on Map stamp dated -/NO 7/99; **new late date** for Period 2.

KALSO, B.C. – **New latest reported date**, -/DE 21/97, on 3 cent Small Queen.

VICTORIA, B.C., HMR 1 – Strike dated -/AP 11/94 on 2 cent postal stationery; unreported blank time mark and unreported on 2 cent envelope.



First reported strike of LINDSAY, ONT. on 5 Cent Registered Letter stamp, dated PM/JA 17/94