

W.G. Robinson  
5830 Cartier St.  
Vancouver, B.C.  
V6M 3A7

THE R.P.O. NEWSLETTER

OF THE CANADIAN R.P.O. STUDY GROUP ( B.N.A.P.S. )

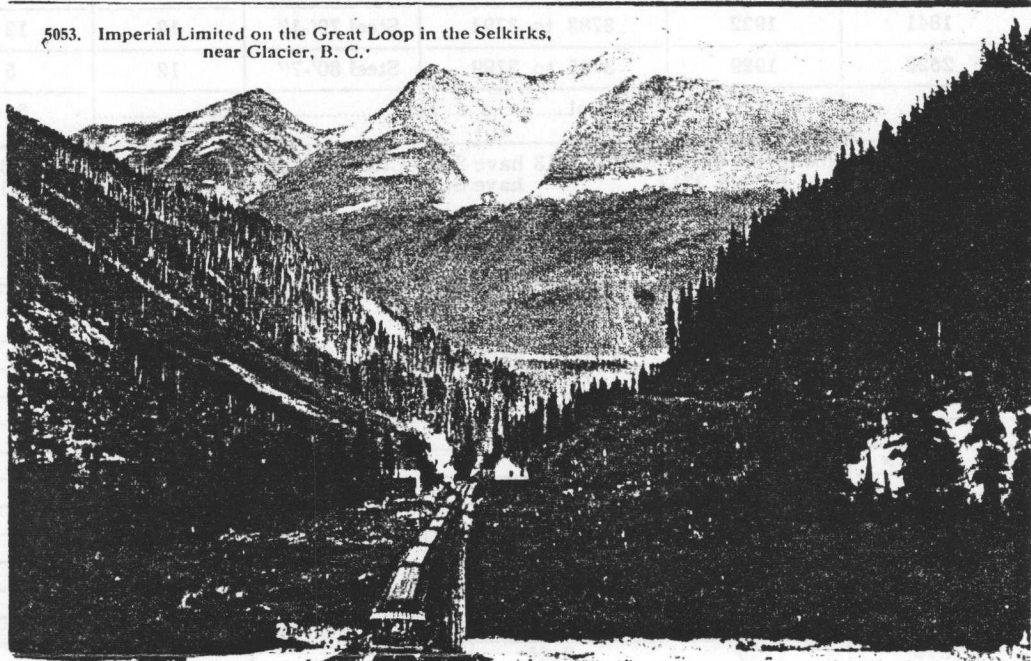
Volume 27 - No.2

Whole No.139

December, 1988 <sup>98</sup>

**MEMBERSHIP** - We have just been advised of the death of our long-time member in the U.K. - Will Collie of Birkenhead. Will was a quiet person, very interested in our specialty, who usually attended the conventions of the Canadian Philatelic Society of Great Britain. Megan and I travelled by train from Perth to Edinburgh with him following their 1992 convention, and found him a most interesting collector. We met him again at the 1997 convention in Harrogate, and we will miss him.

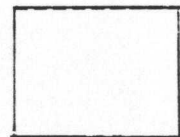
5053. Imperial Limited on the Great Loop in the Selkirks,  
near Glacier, B. C.



From Gerry Carr - A postcard showing another view of the Great Loop leading up to Rogers Pass through the Selkirk Mountains on the C.P.R. main line near Glacier, B.C.

**CONTENTS** - This issue has contributions by Don Wilson on the Newfoundland Railway, and some items from Jerry Carr, Horace Harrison, Chris Anstead and Ken Ellison. We hope you enjoy them.

**1998-99 ANNUAL DUES** - This is your second reminder. our year ends at the BNAPEX Annual Meeting. If there is a check mark in the box to the right, you still owe 1998-99 dues, and this will be your last Newsletter. Please remit \$10 CAD in Canada, \$9 U.S. in U.S.A., and 5 pounds sterling for U.K. addresses. Canadian, U.S. or Sterling Cheques to W.G.Robinson, or bank notes accepted.



## SUMMARY OF EQUIPMENT - July 1, 1929

CANADIAN PACIFIC PASSENGER EQUIPMENT  
MAIL

E.O.	Year Built	Series	Length Over Sills	Wheels	Number of Cars
	1882	3706	51'-0"	8	1
773	1908	●3708 to 3713	60'-10"	8	6
1476, 1495	1915	3750 to 3757			8
1499	1917	3758 to 3769			12
1543	1918	3770 to 3775	Steel 60'-9½"	8	6
1500	1917	3776			1
1841	1922	3780 & 3781	Steel 79'-1"	12	2
2520	1929	3782	Steel 80'-7"	12	1
1841	1922	3783 to 3794	Steel 79'-1"	12	12
2520	1929	3795 to 3799	Steel 80'-7"	12	5
		Total.....			54

●CARS. Nos. 3708, 3710, 3711 & 3713 have Steel Ctr. Sills and Steel Ends. E.O. 1846  
3709 & 3712 have Steel Ctr. Sills and Steel Ends. E.O. 1925

## MAIL &amp; EXPRESS

	1888	3415			1
139	1891	3423 & 3425			2
	1888	3427	56'-0"	8	1
188	1896	3429			1
259	1899	3433	57'-2"	8	1
	1884	3437			1
	1883	3438			1
	1884	3439	58'-0"	8	1
848, 901, 916	1909	●3443 to 3445			3
742, 753, 755, 795	1908	●3446 to 3450			5
842A	1909	●3451 to 3453			3
418	1904	3454 to 3463			10
446	1905	3465			1
631	1907	3466 & 3468	60'-0"	8	2
872	1909	3469			1
631	1907	3470 to 3472			3
753	1908	3473			1
631	1907	3474 to 3476			3
631	1907	3478 to 3481			4

## SUMMARY OF EQUIPMENT - July 1, 1929 (Continued)

CANADIAN PACIFIC PASSENGER EQUIPMENT—Continued  
MAIL AND EXPRESS—Continued

E.O.	Year Built	Series	Length Over Sills	Wheels	Number of Cars
691, 742	1908	3482 to 3484	60'-0"	8	3
742	1887	3487 to 3489			3
	Rebuilt 1908	3492			1
	1889	3493			1
469	1906	3494 to 3496			3
842A	1909	3497			1
785	1908	3498			1
469	1906	3499 to 3501			3
842B	1909	●3502 to 3508			7
1183, 1303	1912	●3509 to 3514 & 3516			7
1329	1913	●3517 to 3523	Steel 79'-1"	12	7
2026	1923	3550 to 3561			12
2521	1929	3562 to 3566	Steel 80'-7"	12	5
	1907	3696 & 3697	70'-0"	12	2
956	1910	3698			1
Total.....					102

● Cars 3443 to 3453  
3502 to 3514 } have steel centre sills and steel ends.  
3516 to 3523 }

## BAGGAGE AND EXPRESS

E.O.	Year Built	Series	Length Over Sills	Wheels	Number of Cars
	1882	3812	50'-0"	8	1
	1883	3818	50'-0"	8	1
	1890	3821	56'-0"	8	1
	1892	3824			1
	1891-92	3826 & 3828			2
	1888-89	3829 to 3832			4
	1887	3834 to 3836	56'-0"	12	3
	1886	3838			1
	1890	3840			1
	1890	3842 to 3844			3
211	1897	3846 to 3852	56'-0"	8	7
		3854			1
230	1898	3856 to 3859	57'-2"	8	4
	1897	3860			1
		3861 to 3863			3
288	1900	3866 to 3869	58'-0"	8	4
	1884	3870			1

AND MANUAL OF PROVINCIAL INFORMATION.

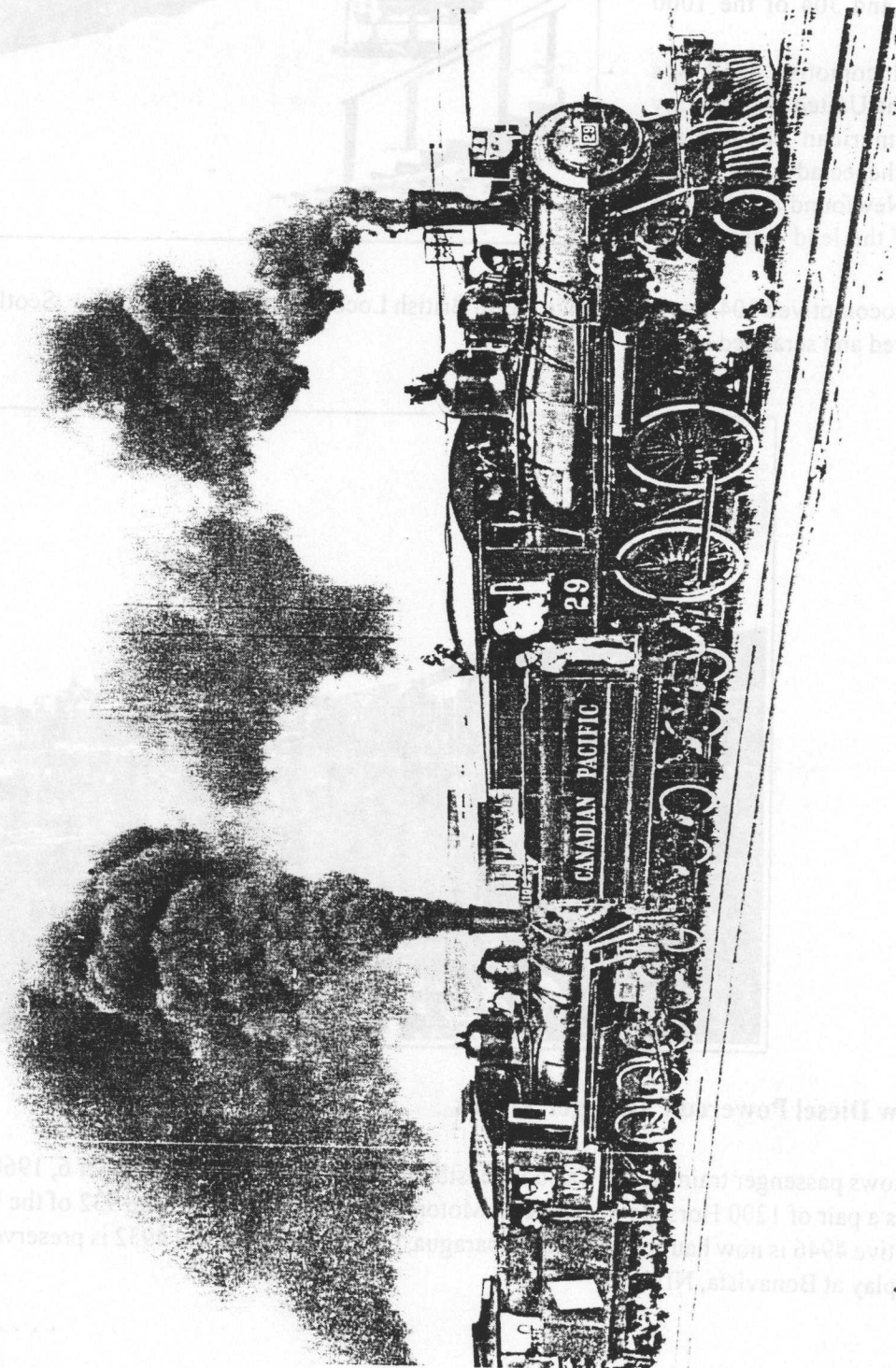
291

Canadian Pacific Railway Main Line and Branches.		Miles.
Laggan to Vancouver .....	526.0	
New Westminster branch .....	8.2	
Mission branch—Mission Junction to Sumas .....	10.0	
Arrow Lake branch—Revelstoke to Arrowhead.....	27.4	
Vancouver to Coal Harbor .....	1.2	
Nicola, Kamloops and Similkameen Coal and Railway Co. (leased)—Nicola to Spence's Bridge .....	47.0	
B. C. Southern (leased)		
Crow's Nest to Kootenay Landing. ....	182.	
Nelson to Proctor.....	20.4	
	202.4	
Columbia and Kootenay Railway (leased)		
Nelson to Robson.....	27.4	
Spur to mouth of Kootenay river .....	0.8	
Slocan Junction to Slocan.....	31.3	
	59.5	
Shuswap and Okanagan Railway (leased)—Sicamous Junction to Okanagan Landing .....	50.8	
Nakusp and Slocan Railway (leased)—Nakusp to Three Forks .....	36.4	
Three Forks to Sandon (owned) .....	4.3	
Vancouver and Lulu Island Railway (leased)—Vancouver to Steveston .....	16.9	
Kootenay and Arrowhead Railway (leased)—Lardeau to Gerrard .....	33.2	
Esquimalt and Nanaimo Railway—Victoria to Cameron Lake .....	115.0	
Columbia and Western Railway (leased)—Castlegar to Rossland... ..	29.3	
Rossland to Le Roi .....	1.3	
Trail to Smelter Junction .....	2.0	
Midway to Junction with C. & K. Railway .....	103.2	
Mining spurs, Boundary Creek district.....	23.05	
	159.3	
Crow's Nest Pass Line—		
Crow's Nest to Kootenay Landing.....	182.1	
North Star Junction to Kimberley.....	19.1	
Marysville Junction to Marysville.....	0.9	
Ferne to Fernie... Mines .....	5.0	
Curzon to Kingsgate (leased) .....	8.5	
	215.6	
	1513.2	
Great Northern Railway Company Branches and Leased Lines.		Miles.
Crow's Nest Southern Railway—International boundary at Gateway to Michel, B. C. ....	74.18	
Nelson and Fort Sheppard Railway—International boundary at Waneta, B.C. to Troupe Junction .....	55.42	
Red Mountain Railway—International boundary near Paterson, B. C., to Rossland, B. C. ....	9.59	
New Westminster Southern—International boundary at Douglas to South Westminster, B. C. ....	24.10	
Vancouver, Victoria and Eastern Railway and Navigation Company—Inter- national boundary at Laurier to Grand Forks, B. C. ....	16.47	
Grand Forks to Phoenix .....	25.82	
International boundary at Midway to Molson .....	28.89	
International boundary at Chopaka to Keremeos .....	18.20	
Keremeos to Princeton .....	41.00	
New Westminster to Vancouver .....	14.79	
Cloverdale to Point Guichon .....	17.31	
Mines to Granby Smelter .....	4.74	
Blaine, Wash., to Mud Bay .....	11.32	
Olivers to New Westminster .....	17.13	
Cloverdale to Abbotsford .....	5.75	
Vancouver, Westminster and Yukon .....	17.28	
Kootenay Railway and Navigation Company—		
Bedlington and Nelson Railway—Kuskenook to Bedlington.. ..	15.3	
Kaslo and Slocan Railway—Kaslo to Sandon.....	28.33	
Morrissey, Fernie & Michel Railway—Swinton to Carbonado.....	6.10	
Ferne to Coal Creek .....	6.12	
	437.94	
Other Lines		
Vancouver Copper Company's Railway—Lenora Mines to Crofton .....	11.75	
Victoria and Sidney Railway—Victoria to Sidney .....	16.26	
Victoria Terminal Railway and Ferry Company—City of Victoria .....	1.14	
Wellington Colliery Company's Railway—Ladysmith to Extension Mines .....	9.94	
Union Bay to Cumberland .....	10.75	
White Pass and Yukon Railway—White Pass to White Horse .....	90.32	
	140.16	
	2091.30	



**CENTENNIAL SPECIAL:**  
Former CN 4-6-0 No. 1009 (at the age of 75) and CP 4-4-0 No. 29 team up on the occasion of No. 29's 100th birthday. The venerable locomotives were photographed as they arrived in the Salem & Hillsborough Railroad's yard at Hillsborough, New Brunswick, on September 6, 1987.

No. 29 saw considerable excursion service in 1988 when No. 1009 was sidelined with a driver tire problem. (Collection of W. Lemon)

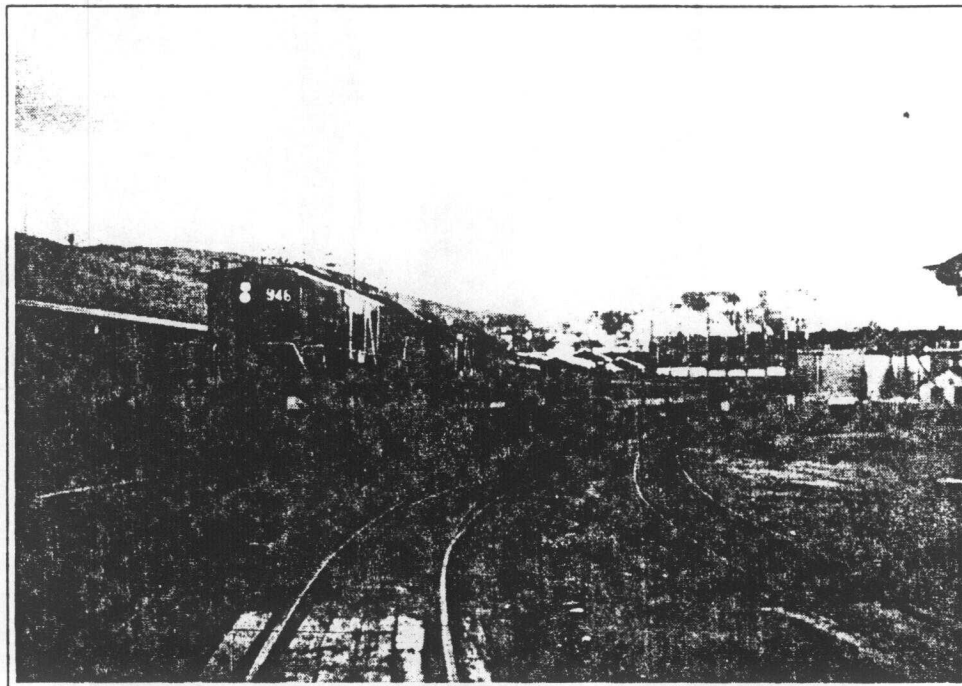
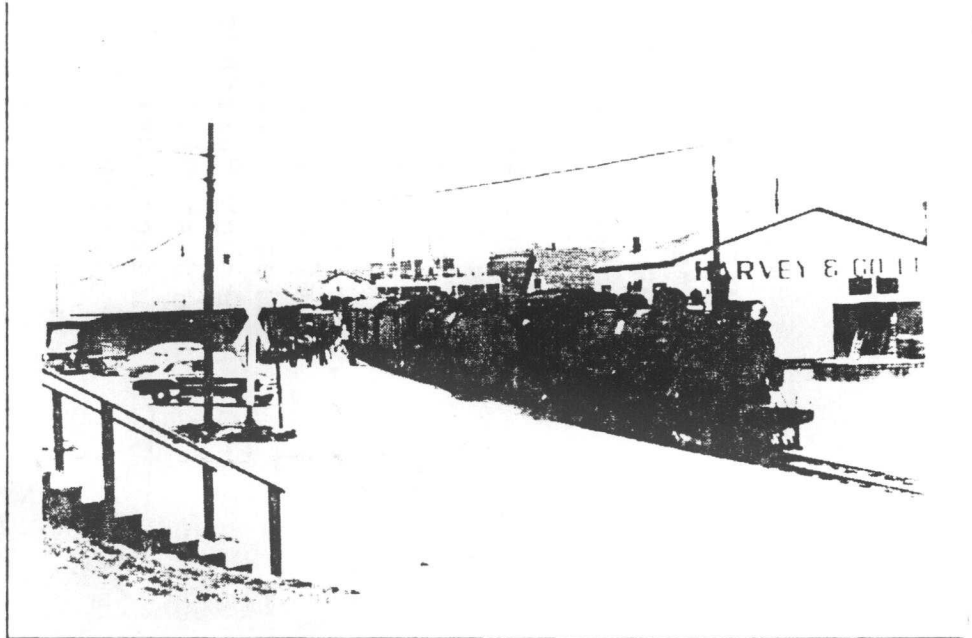


## The End of Steam Power on Passenger Trains

Photo shows Newfoundland Railway steam passenger train #2 (Caribou) eastbound at Corner Brook in the late 1950's. heading the 12 passenger car consist, is a pair o 2-8-2 Mikado's Numbers 312 and 304 of the 1000 class.

Leading locomotive #312 was built for the United States Army by the American Locomotive Works, Schenectady, U.S.A. and came to Newfoundland in 1941 as part of the lend lease agreement.

The trail locomotive #304 was built by the North British Locomotive Works, Glasgow, Scotland in 1937. Both locomotives were retired and scrapped in 1957.



## The New Diesel Powered Passenger Trains

Photo shows passenger train No. 2 (Caribou) eastbound at Corner Brook on October 6, 1968. Heading the 13 passenger car consist is a pair of 1200 Horsepower General Motors Diesels numbers 946 and 932 of the 900 class.

Locomotive #946 is now hauling trains in Nicaragua, Central America and #932 is preserved and now forms part of a static train display at Bonavista, Nfld.

From Jerry Carr -

- 7 -

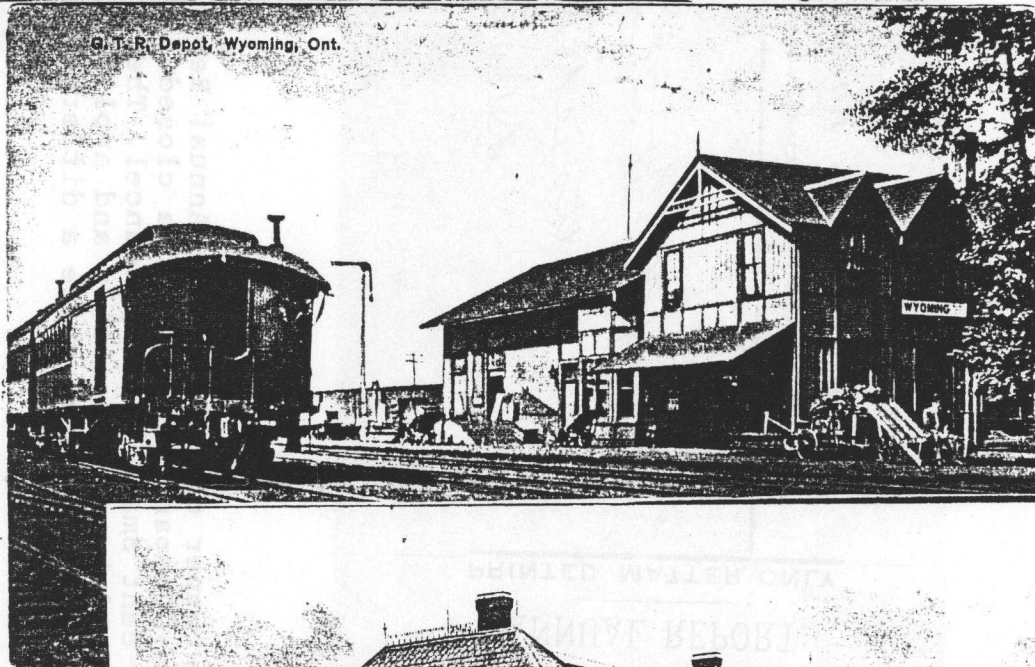
From Horace Harrison

Interesting views of Grand Trunk Railway Stations in Ontario -

Grand Trunk Railway Passenger Station,  
Berlin, Ont., Canada



G. T. R. Depot, Wyoming, Ont.



G. T. R. Station. Chatham, Ont.



*Canadian Pacific Railway Company.*

OFFICE OF THE SECRETARY, MONTREAL, CANADA

PRINTED MATTER ONLY

ANNUAL REPORT.

*Mrs. J. K. Statham  
Attorneys New Rd.  
Derby*

This wrapper containing the Annual Report of the Canadian Pacific Railway Company was sent in a closed bag to the U.K. franked with a one-cent Small Queen precancel. These were apparently torn into strips of ten horizontally and applied to the wrappers. Any other method would produce quite a different separation.

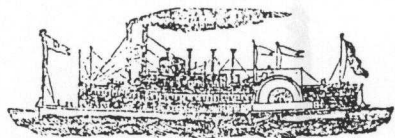


From Ken Ellison -

-9-

Extracts from the Vernon "Daily News" -

### S.S. PENTICTON timetable - 23 March 1893



#### ss. "Pentiction"

Will carry passengers and freight on Okanagan lake, connecting with trains to and from Vernon three times a week:

BETWEEN VERNON AND PENTICTON—

Leaves Vernon for the Mission and Pentiction 2 p.m. Monday and Friday.

Leaves Pentiction for the Mission and Vernon 1 p.m. Tuesday and Saturday.

Leave Mission going north, 8 a.m. Monday, and Friday.

Leave Mission going south, 8 a.m. Tuesday, and Saturday.

Will call at Trout Creek and other points when desired. Good sleeping accommodation.

B. & L. LEQUIME, Proprietors.

P. J. GOODING, Manager.

R. McDougall, Ticket Agent at Vernon.

### Similkameen Train Robbery 24 May 1906

A large crowd went down to meet the Aberdeen Monday evening to see the contingent of Mounted Police arrive, who were bound for the Similkameen. Every trail and road will be guarded in order to prevent the escape to the south of the robbers who held up the train near Kamloops. Quite a number of specials have been sworn in here to watch the roads leading south from this place. Boats are also watched closely and two peaceable citizens out on a little fishing trip were reported to have been identified as the convicts who escaped from Kamloops jail last month. The telephone wire was kept busy between Peachland, Pentiction and Summerland. Many suspicious circumstances were noted in the actions of the occupants of the boat by the amateur sleuths in the government's employ. When the suspects were finally run to earth the laugh was on the police.

### Mail Clerk on S.S. OKANAGAN - 15 June 1911

J. McLeod, Supt. of the mail service, Vancouver, wrote that the department has at last authorized the appointment of a mail clerk on the Strmr. Okanagan, in response to repeated applications from the Boards of Trade of the Okanagan, and the new service will start as soon as the appointment is made, and accommodation furnished on the boat for the clerk.—Filed.

### KETTLE VALLEY RAILWAY TIME TABLE

Daily Westbound Read down. C. P. Ry.		Daily Eastbound Read up. C. P. Ry.
7.40 (Lv.)	Nelson	(Ar.) 21.10
12.25	Grand Forks	16.10
14.20 (Ar.)	Midway	Lv. 14.30
K. V. Ry.		C. P. Ry.
14.40 (Lv.)	Midway	(Ar.) 14.10
16.39	Carmi	12.09
18.03	McCulloch	10.52
21.40 (Ar.)	PENTICTON	(Lv.) 7.30
21.50 (Lv.)		(Ar.) 7.20
22.30	West Summerland	6.25
1.30	Princeton	3.25
3.09	Brookmere	1.27
3.21	Brodie	1.15
6.30	Hope	22.10
7.00 (Ar.)	Petaia	(Lv.) 21.40
C. P. Ry. (Junction C.P.Ry.)	K. V. Ry.	
7.08 (Lv.)	Petaia	(Ar.) 21.32
10.40 (Ar.)	Vancouver	(Lv.) 18.00

Passengers for Coast points, via Hope, leave Pentiction 21.50 daily, arrive Vancouver 10.40 the next morning.

Passengers for Merritt, Nicola and Spence's Bridge change at Brodie. Arrive 3.21. Leave 8.45 daily. Arrive Merritt, 10.00, Nicola 10.30, Spence's Bridge 13.30.

Canadian Pacific trains leave Spence's Bridge:—

Number 3, Westbound.....13.53

Number 4, Eastbound.....15.35

#### STAGES.

Stage for Kelowna leaves Vernon Monday, Wednesday and Friday at 8 a.m.

Auto stage for Lumby leaves Vernon daily at 1.30 p.m.



### TIME TABLE

#### SHUSWAP & OKANAGAN BRANCH

Daily trains both ways to Okanagan Landing, except Sunday.

South bound read down.	STATIONS	No: bound read
10.45 (Lv.)	Sicamous Jct.	(Ar.) 18
11.18	Mara	17
11.34	Grindrod	17
11.49	Enderby	16
12.15	Armstrong	16
12.36	Larkin	16
	(Regular stop)	
13.03	Vernon	15
13.25 (Ar.)	Ok. Landing	(Lv.) 15

#### OKANAGAN STEAMSHIP SERVICE

Steamer Sicamous runs daily except Sunday between Okanagan Landing and Pentiction as follows:

Ok. Landing—South bound, 13.40; north bound, 12k.

Whiteman's Creek—South bound, Wednesday only.

Ewing's Landing—South bound, Monday and Friday.

Sunnywold—South bound, Wednesday only.

Nahon—South bound, Monday and Friday.

Okanagan Centre—Daily except Sunday.

Wilson's Landing—South bound, Wednesday only; north bound, Saturday only.

Kelowna—South bound, 15.50; north bound, 8.15; daily except Sunday.

Okanagan Mission—South bound, Wednesday only.

Westbank—Daily except Sunday.

Gellatly—South bound, daily except Sunday; north bound, daily except Sunday.

Peachland—South bound, 16.45; north bound, 7.15; daily except Sunday.

Summerland—South bound, 17.45; north bound, 6.15; daily except Sunday.

Naramata—South bound, daily except Sunday; north bound, daily except Sunday.

Pentiction—South bound, 18.45; north bound, 5.30k; daily except Sunday.

#### C. P. R. MAIN LINE

East bound from Sicamous daily—No. 10.38; No. 4, 23.15.

West bound from Sicamous daily—No. 1, 19k; No. 3, 7.40.

H. W. BRODIE, J. A. MORRISO

Gen. Passenger Agent Agent,  
Vancouver, B.C. VERNON, B.

### Railway & Stage Timetables - 9 November 1916

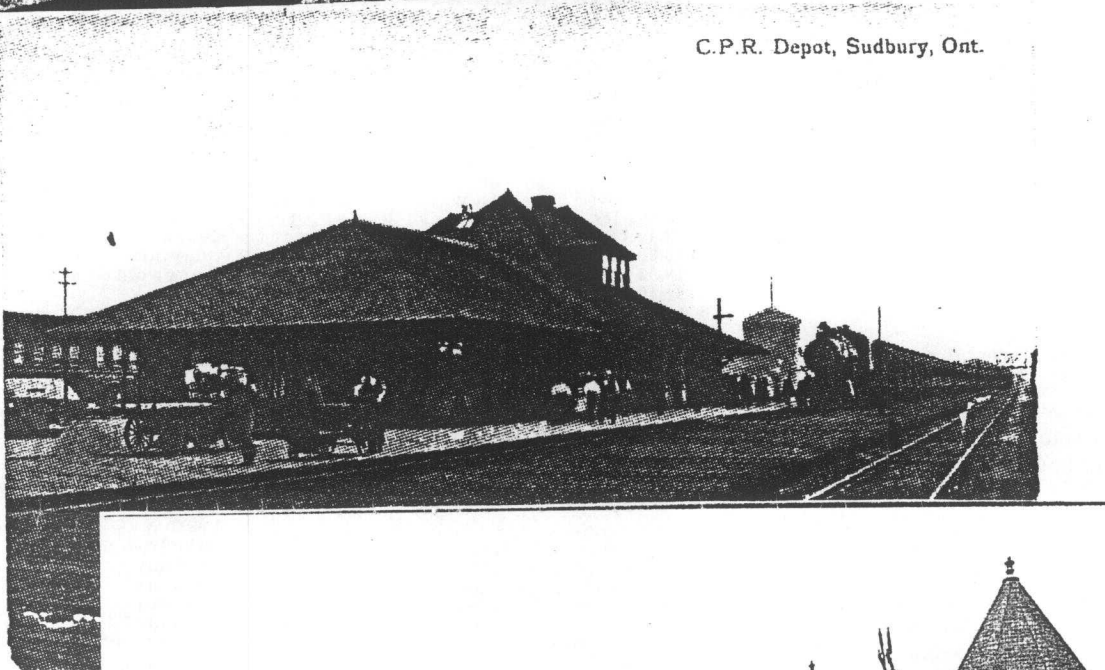
.... /10

Two Ontario C.P.R. Stations, and the C.N.R. Station at Chesley with C.N.R. Locomotive #86 hauling southbound Palmerston-Owen Sound way freight. This locomotive is now displayed in front of the London, Ontario Fair Grounds.

C.P.R. Station, Chatham, Ont., Canada



C.P.R. Depot, Sudbury, Ont.



THAT'S ALL  
FOR THIS  
ISSUE.

W.G. Robinson  
5830 Cartier St.  
Vancouver, B.C.  
V6M 3A7

