

Dots and Scratches

Re-entries and Constant Plate Varieties
BNAPS Study Group



6c Large Queen Plate Pitting in CANADA
Courtesy of Jim Jung

Dots and Scratches

Re-entries and Constant Plate Varieties

BNAPS Study Group

July 2025, Volume 11, Number 2, Whole Number 38

Table of Contents

My Two Cents	3
5c Beaver Twig in Falls	4
By Jim Jung	
King Edward VII 10c	11
By Jim Jung	
Canada's Five Cents Beaver Proofs with Various Plate Flaws Part 3.....	19
by Michael D. Smith	
5c Small Queen Plate Cracks	30
by Jim Jung	

BNAPS Re-entries and Constant Plate Varieties Study Group

This newsletter and previous issues are available as PDF files from the [BNAPS website](#).

Please send submissions and feedback about the newsletter to the Editor – jimjung8@gmail.com.
All other correspondence should be addressed to the Chairman, bsbvp88@hotmail.com

Dear Study Group Member,

[Eastern Auctions](#) just had the fabulous Denninger Collection Sale which featured many hard to get and very expensive items including one Mint and one Used copy of the 12d Black on Laid Paper. It's worth looking at the realizations of this superlative collection of Canada stamps and postal history. While I was looking I was dreaming that one day I could have such splendid items in my collection.

Our sponsor, Deveney Stamps, has a nice collection of Major Re-entries and Stitch Watermarks for sale. **We are giving away two \$50 Gift Certificates that can be used at Deveney Stamps** and you can be the winner of one by simply sending an email to me at jimjung8@gmail.com as soon as you receive this newsletter. I will conduct the draw using a Wheel Picker from the web and notify everyone of who the winners are by email.

This contest is for Dots and Scratches members only. If you belong to BNAPS, then you need to sign up for the newsletter to enter. To sign up, all you have to do is email me your BNAPS member number, full name and email. Good luck to everyone and Happy Canada Day!.

Jim Jung

DEVENEY STAMPS LTD.

ESTD 1977

🍁 Specializing in Canadian Varieties & Re-entries 🍁



Featuring high resolution images

ONE OF CANADA'S LARGEST ONLINE STAMP INVENTORIES

WWW.DEVENEYSTAMPS.COM

TOLL FREE: 1-888-232-0282



info@deveneystamps.com

5c Beaver - Twig in Falls by Jim Jung

Position 41 - State 4

Image courtesy of Earl Noss



This is one of those nice flaws from Clayton Huff, numbered as H9009 in the Whitworth 5c Beaver book, at Position 41 State 4. Just from the name and the look of the flaw, it is one you'll probably want to find, as it resembles the well-known Log in Waterfall.

Although it is pictured in Whitworth's as a single line near the top of the falls, Earl Noss found this beautiful mint copy of this flaw that shows a second line in the falls clearly below the first line. Our email group of friends also found previous copies with just one line.



5c Beaver - Twig in Falls by Jim Jung



Image courtesy of Jim Jung



The main guide to position 41 is the three dots in the lower left corner margin, positioned as shown at left. These guide dots occur in all states. It is only the State 4 that carries the Twig in Falls flaw. After Earl's find of the flaw showing the second line, we noticed that you can faintly see the second line of the flaw in this copy on cover from Quebec dated OC 20 63.

5c Beaver - Twig in Falls by Jim Jung

Image courtesy of Jim Jung



A nice double arc HAMILTON OC 22 1863 receiver is on the back of this mourning cover that is fully intact with just a tear at the opening at the back. The cancel ties the stamp to the cover away from the flaw which is perfect for D&S collectors. If you know where to look, you can see the flaw when looking at the stamp. It's always a good idea to check your position 41 stamps for this flaw.

5c Beaver - Twig in Falls by Jim Jung

Image courtesy of Jim Jung



A second cover dated six months later on AP 5 64 shows the signature three dots at the lower left for position 41 and the Twig in Falls flaw, a bit lighter, but still quite visible. The second line of the flaw has now faded away.



5c Beaver - Twig in Falls by Jim Jung

Image courtesy of Jim Jung



Above: The back of the second cover with a next day blue WHITBY AP 6 64 receiver, the blue colour typical of the Whitby Post Office. Below: A beautiful copy of a State 4 proof showing the Twig in Falls flaw very clearly. I also see a very faint second line below the first line but I wouldn't notice it without knowing that it is there..



Image courtesy of Mike Smith

5c Beaver - Twig in Falls by Jim Jung



A beautiful Proof block in a light orange colour pulled at State 4 showing the three dots in the lower left defining position 41. The faint line of the Twig in Falls flaw is seen, even in this lighter shade, confirming State 4.



Images courtesy of Mike Smith

5c Beaver - Twig in Falls by Jim Jung



Here is a third cover dated JU 14 64 just a few months after the second cover above. There is a block of 4 x 5c Beavers in the upper left of the cover from positions 41 42 51 52. A closeup of this slightly tattered block shows the typical guide dots from position 41 as well as a now very faint Twig in Falls. This is a magnificent quadruple rate registered cover with the 2c registration paid with the 2 x 1c stamps at the upper right. I like the fact that all the stamps are tied with the LONDON JU 14 64 duplexes.



Images courtesy of Mike Smith



The 10c Edward Re-entries 1R43 and 1R45 have the LLNB, left side leaves and UL spandrel lines doubled. Positions 1R43 to 1R49 all look similar with re-entries in the LNB and UL spandrel. Some of these positions have guide dots at 9 o'clock on the inner oval and some don't have the guide dot. This can be used to distinguish the positions to an extent but the other parts of the doubling are very much the same.

King Edward VII 10c by Jim Jung



Above: On positions 1R43 to 49, the horizontal spandrel lines at the upper left are doubled but only above the crown. The top portion of the crown also has some doubling. The extra mark at the upper left corner is seen on many of the 10c Edwards in different strengths and not just the re-entry positions.

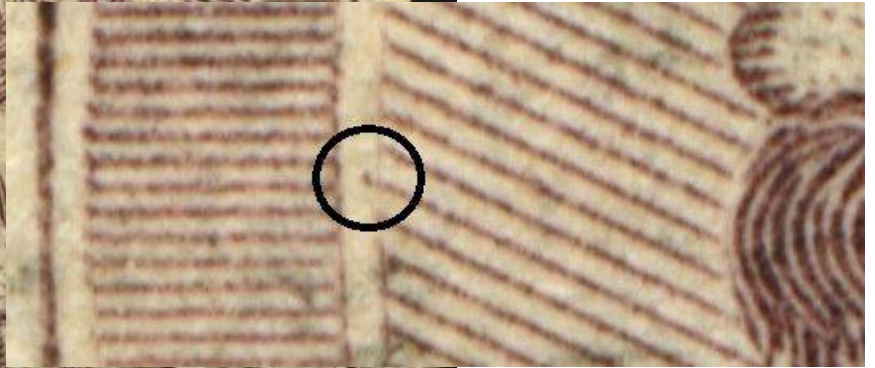
Left: The left and right sides of the LNB frameline are doubled as well as the two leaves on the left side of the stamp.



King Edward VII 10c by Jim Jung



The 10c Edward Re-entry at positions 1R44, 46, 47 show doubling in the LLNB, left side leaves and UL spandrel. The only difference between these positions and the 1R43 and 1R45 positions is a guide dot at 9 o'clock on the inner oval.



Below: The horizontal spandrel lines at the upper left are doubled but only above the crown. The top portion of the crown also shows doubling. The extra mark at the upper left corner is seen on many of the 10c Edwards in different strengths.

King Edward VII 10c by Jim Jung

10c Edward Re-entry 1R44



Top: There is a doubled top spandrel line and a very faint dotted line in the white space just below the outer frameline. Lower left: The background lines behind CAN extend a bit left into the oval. Lower right: The left and right sides of the LNB frameline are doubled as well as the two leaves on the left side.

King Edward VII 10c by Jim Jung



10c Edward Re-entry 1R44-1R45 pair - LLNB, Leaves and UL spandrel.



Left: 1R44, Right: 1R45 doubling in left and right sides of the LNB is weaker in this position.

King Edward VII 10c by Jim Jung



Top: 1R44
Bottom: 1R45
Less doubling
in the upper
left spandrel
lines



Top: 1R44
Guide dot
Bottom: 1R45
No Guide dot

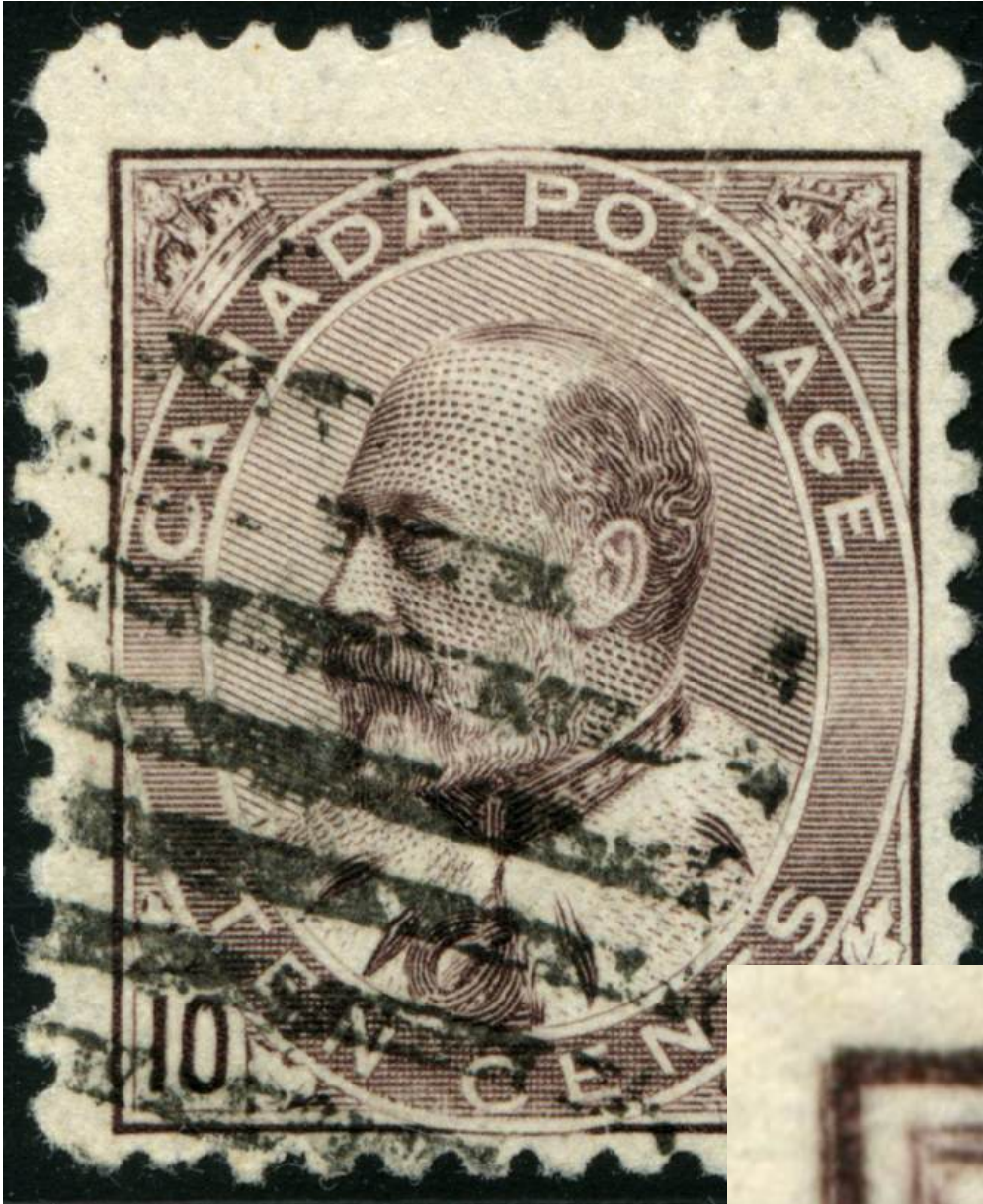




Here is another flaw in the LNB. The left frame of the box is extended far below the outer frameline deep into the lower margin. The bottom horizontal frame line of the numeral box looks slanted and there is a faint scratch at the top right of the 0 in 10.



King Edward VII 10c by Jim Jung



It's a bit common to find an extra line in the upper left corner frameline but this stamp has an extra squiggly line, a kind of engraver's slip.



Canada's Five Cents Beaver Proofs with Various Plate Flaws Part 3
by Michael D. Smith

15TCiv - Position 28, 29 State 1



Position 28 State 1



R. 71 = fresh entry

Canada's Five Cents Beaver Proofs with Various Plate Flaws Part 3

by Michael D. Smith

15TCiv - Position 28 State 1



R. 71 = fresh entry. Entire outer frame line left is doubled.



Canada's Five Cents Beaver Proofs with Various Plate Flaws Part 3
by Michael D. Smith

15TCiv - Position 29 State 1



Short entry at NE. Doubled 'C' dot.



Canada's Five Cents Beaver Proofs with Various Plate Flaws Part 3
by Michael D. Smith

15TCiv - Position 31 State 1



W. margin guide dots. Short entry NE spandrel.



Canada's Five Cents Beaver Proofs with Various Plate Flaws Part 3

by Michael D. Smith

15TCiv - Position 31, 32, 41, 42 State 1



DEVENEY STAMPS LTD.

ESTD 1977

🍁 Specializing in Canadian Varieties & Re-entries 🍁



Featuring high resolution images

ONE OF CANADA'S LARGEST ONLINE STAMP INVENTORIES

WWW.DEVENEYSTAMPS.COM

TOLL FREE: 1-888-232-0282



info@deveneystamps.com

Canada's Five Cents Beaver Proofs with Various Plate Flaws Part 3
by Michael D. Smith

15TCiv - Position 31 State 1



W. margin guide dots. Short entry NE spandrel.



Canada's Five Cents Beaver Proofs with Various Plate Flaws Part 3

by Michael D. Smith

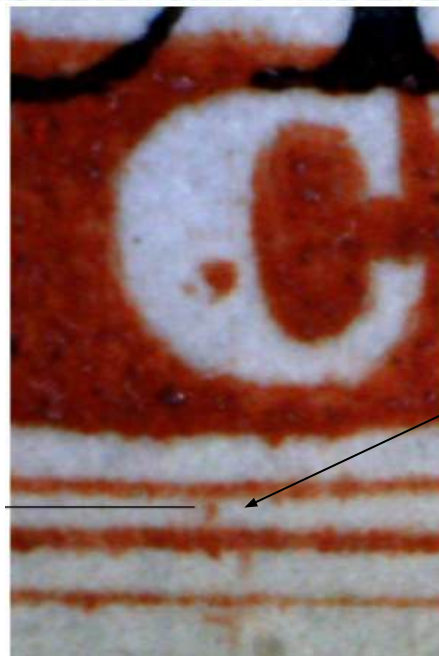
15TCiv - Position 32 State 1



PF 86a



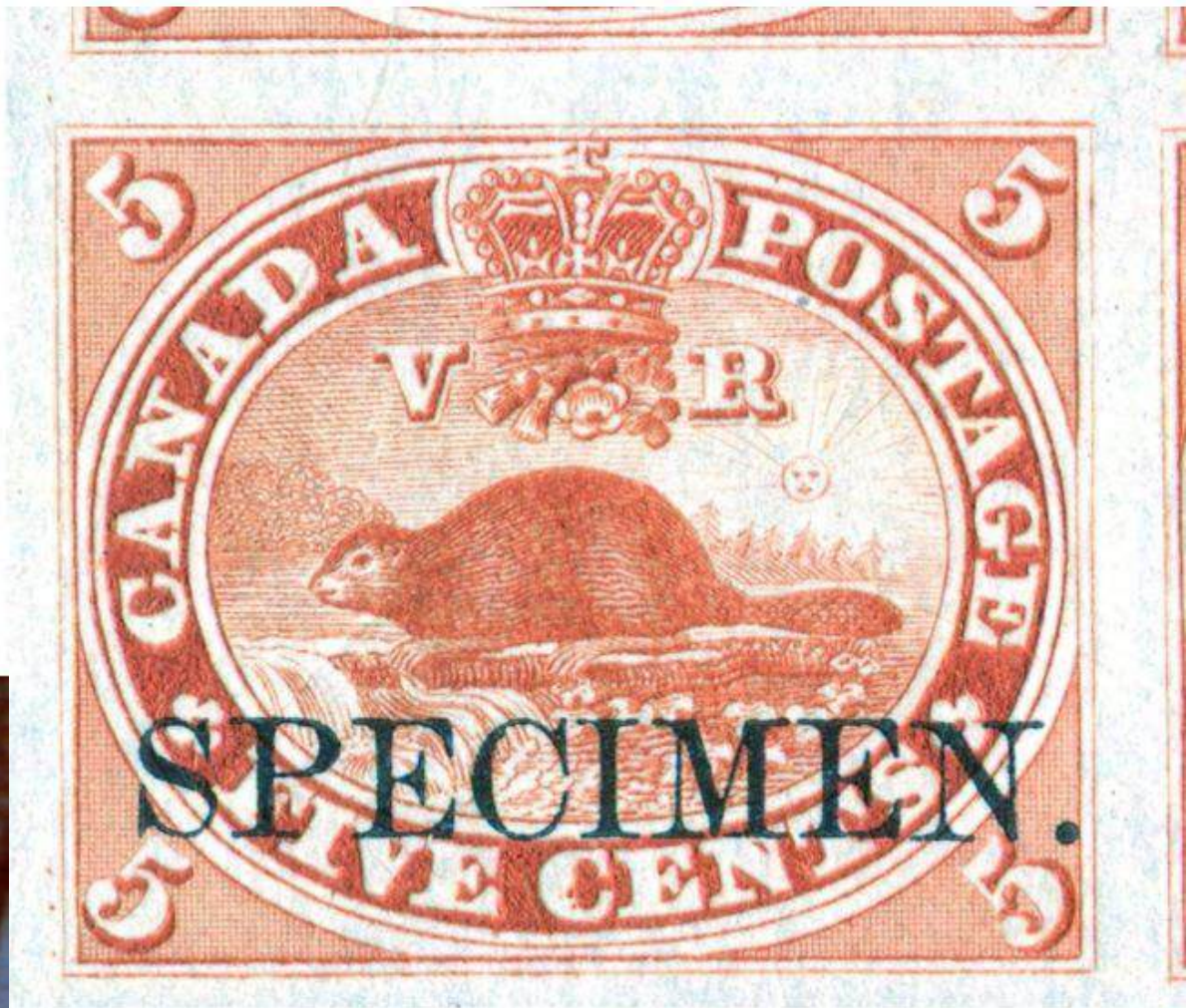
PF 114a



Canada's Five Cents Beaver Proofs with Various Plate Flaws Part 3

by Michael D. Smith

15TCiv - Position 41 State 1



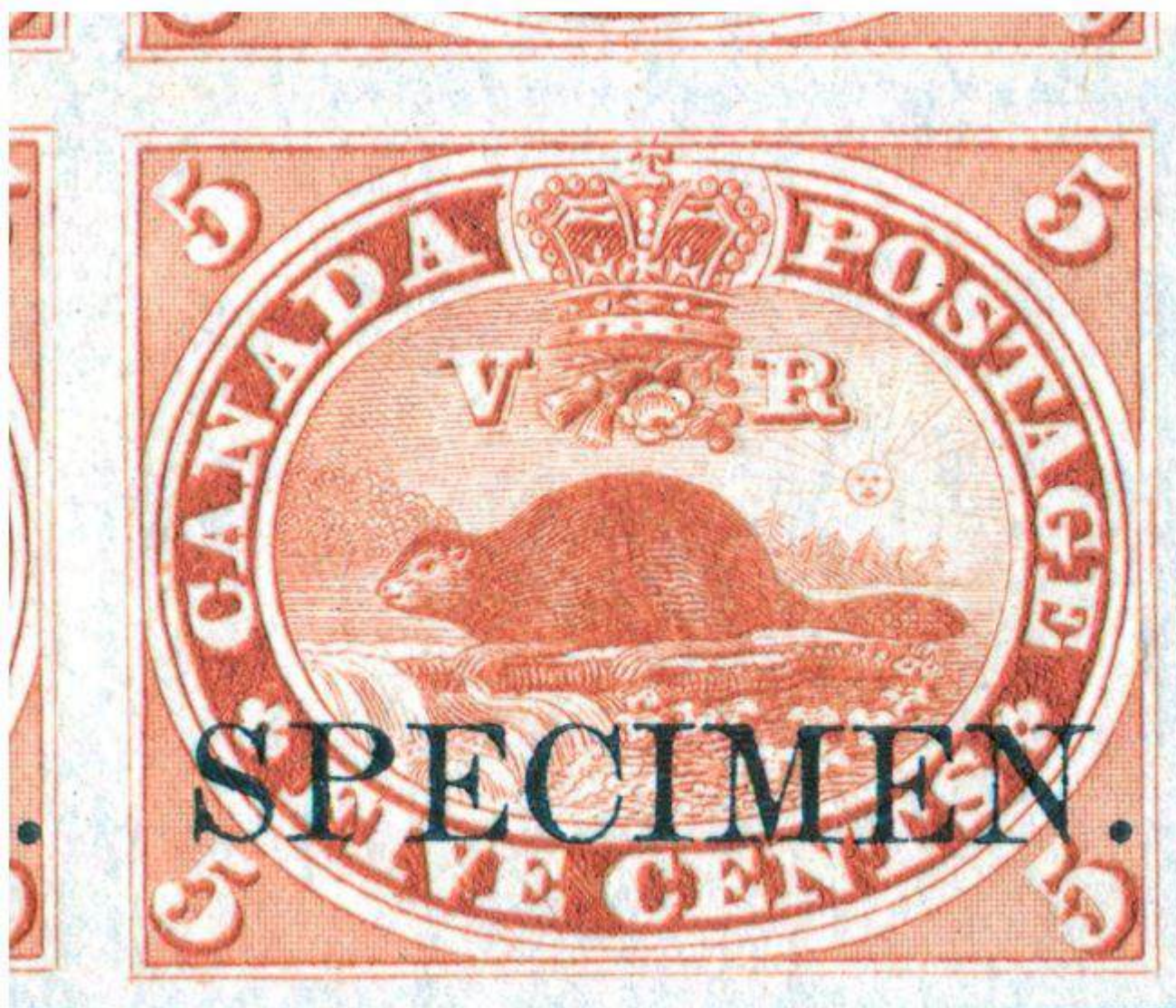
W margin guide dots. Traces of fresh entry at W. Two 'C' dots.



Canada's Five Cents Beaver Proofs with Various Plate Flaws Part 3

by Michael D. Smith

15TCiv - Position 42 State 1



R. 16 = fresh entry. No 'C' dot

Canada's Five Cents Beaver Proofs with Various Plate Flaws Part 3

by Michael D. Smith

R. 16 = fresh entry: Doubling around crown. Doubling in 'VR'.



Canada's Five Cents Beaver Proofs with Various Plate Flaws Part 3

by Michael D. Smith



R. 16 = fresh entry

Marks in '5' and below.



Doubling in 'CE'.

5 Cent Small Queen Plate Cracks By Jim Jung

Here are some interesting Plate Cracks that I have found on the 5c Small Queen. I am not really a big Small Queen collector but I do like the re-entries and other nice flaws found on the issue. In saying that I do have a large 3c collection but who doesn't. But here are a few 5c Small Queens in no particular order.

First up is this small sneaky little crack in the E of CENTS. It's clearly a crack with the uneven shaped lines and difficult to see because of its' small size and placement close to the crevices of the plate.



5 Cent Small Queen Plate Cracks By Jim Jung

This Plate Crack is more well known and comes from position 195. It is a large very easily seen crack in the lower left edge of the stamp extending out across the lower left margin. This copy is Ex Simpson and boasts a huge lower margin to show the flaw. You can just see the Imprint across the extended perf tips on the bottom.



5 Cent Small Queen Plate Cracks By Jim Jung

Here is another one from plate position 195 with a smaller margin but this one has a darker shade which shows the plate crack very well. The extent and details of the crack are really clear on this copy.



5 Cent Small Queen Plate Cracks By Jim Jung

Here is another smaller scratch or plate crack in the upper right margin. It is just noticeable extending from the framelines out into the margin.

