

Dots & Scratches

Re-entries and Constant Plate Varieties
BNAPS Study Group



5c Registered Letter Stamp Position 80 Re-entry
Courtesy of the Editor

Dots & Scratches

Re-entries and Constant Plate Varieties

BNAPS Study Group

August 2024, Volume 10, Number 3, Whole Number 35

Table of Contents

My Two Cents	3
Ralph Trimble	4
by Ken Snelson	
A nice Re-entry on the 5c Registered	6
by Ralph Trimble	
5c Edward Hairlines	8
by Jim Jung	
5c Beaver – Valued Printing Flaws	
By Jim Jung	14
The Pictorial Issue of 1935	
By Jim Jung	30
Unitrade Sale	36
by Jim Jung	

BNAPS Re-entries and Constant Plate Varieties Study Group

This newsletter and previous issues are available as PDF files from the [BNAPS website](#).

Please send submissions and feedback about the newsletter to the Editor – jimjung8@gmail.com.
All other correspondence should be addressed to the Chairman, bsbvp88@hotmail.com

Dear Study Group Member,

A treat this month as BNAPEX takes over the St. Lawrence College Event, Conference and Banquet Centre in Kingston, Ontario. Our Annual Study Group meeting will take place on Saturday August 24 at 11:20am in Room A - Classroom 12020, First Floor Grey Wing. Hope to see you there. We will be serving a light lunch of sandwiches, cookies and soft drinks, courtesy of our advertisers: Eastern Auctions, Maresch & Son and now: Garden City Auctions. Please read their ads and get the latest information on the best Philatelic Sales in Canadian Stamps.

We have a new advertiser starting with this issue. Please welcome Garden City Philatelic Auctions and Stéphane Cloutier. Their maiden Auction Sale will feature the extensive Large Queen collection of Brian Hargreaves. This just sounds like an exciting Sale for our membership and will open on September 28. Please check their advertisement on Page 13 for more details.

Another choice sale this Fall is the final sale of the Brigham Estate Province of Canada series. The focus of Part IV will be on Jacques Cartier 10 pence & 17 cents issues and that sounds exciting as the Cartier stamps are very desirable. Take a look at their advertisement on Page 7 for the announcement and keep an eye on the [Eastern Auctions website](#) for more information on this last Sale of the Brigham Pence and Cents issues. The big bucks will fly on October 4.

Jim Jung

DEVENEY STAMPS LTD.

ESTD 1977

Specializing in Canadian Varieties & Re-entries



Featuring high resolution images

ONE OF CANADA'S LARGEST ONLINE STAMP INVENTORIES

WWW.DEVENEYSTAMPS.COM

TOLL FREE: 1-888-232-0282



info@deveneystamps.com

Ralph Trimble by Ken Snelson



Unfortunately, we have to report the death of another PSSC stalwart, Mr. Ralph E Trimble FRPSC. Ralph was Member #152 joining in 1989. He passed away at home on March 8th.

Ralph dedicated his working career to education, serving the Scarborough Board of Education faithfully as both a teacher and librarian and his passion for music, particularly his skillful guitar playing, brought light to his life and those around him.

Ralph married Lois in 1973. They had no children. After Lois died in 2021 Ralph described her as my one-and-only true love for 47 years who will never, ever be forgotten. She was a wonderful woman, an incredible wife, He carried his grief for Lois to the end.

His closest relatives are his sister, a nephew and their families.

His generosity of spirit extended to include his involvement with the Ontario Humane Society, reflecting his compassion for all creatures great and small including his treasured miniature schnauzers Kirby & Koko. There was no funeral but in lieu of flowers, donations to the Ontario Humane Society are encouraged. <https://ontariospca.ca>

In addition to his philatelic activities Ralph was a founding member of the Coin Irregularity Association of Canada.

PSSC members who were closely involved with Ralph describe his numerous contributions to philately:

Leopold Beaudet writes Ralph joined BNAPS in 1977. He formed the BNAPS Re-entry Study Group in 1981 publishing the Group's first newsletter in October 1981. He retired from the Study Group in 1996, having published 71 newsletters. He wrote many of the articles himself, often based on reports he received from study group members and others who discovered reentries in their collections. He also contributed several articles to the BNAPS journal, BNA Topics.

The high-resolution scanners were non-existent at the time Ralph was publishing the newsletter. To study re-entries and illustrate the fine details, Ralph invested in specialized camera equipment, and mastered the art of extreme close-up photography (photomacrography).

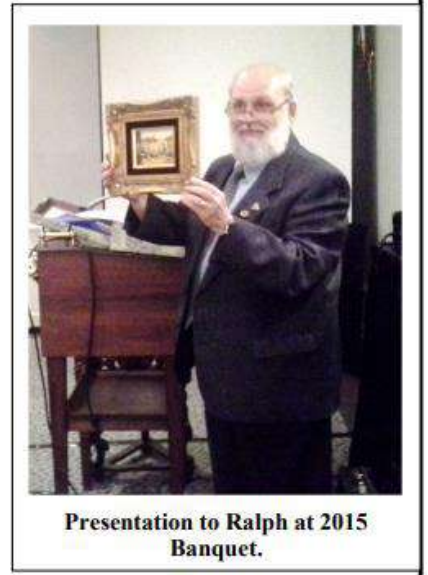
Ralph won the John S. Siverts Award twice, in 1989 and 1993, for best BNAPS study group newsletter published during the previous year. He entered the newsletter in philatelic literature exhibitions and won seven Silver medals. In 2020, BNAPS gave him the Order of the Beaver Lifetime Achievement Award for his accomplishments in the study and dissemination of reentries and his volunteer work in organized philately.

In March 2002, Ralph created a website, <https://www.re-entries.com/>, devoted to re-entries and retouches. He included world-wide although most were Canadian. With the advent of affordable high-resolution scanners and computer microscopes, he replaced the close-up photographs in the newsletters with computer scans. He invited visitors to his website to report their re-entry discoveries.

Ralph Trimble by Ken Snelson

The website became an indispensable and often quoted source of information on re-entries. It won several awards in philatelic literature competitions: Gold with felicitations and Best in Class in the 16th New Zealand National Philatelic Literature Exhibition in 2019; Large Vermeil at Chicagopex 2020; and Large Silver at LONDON 2022. In his will Ralph made arrangements for the Greene Foundation to continue the website.

Ingo Nessel writes Ralph and I worked together on the PSSC executive for ten years during his second extended term as president from 2005 until 2014. Ralph was the consummate leader fully engaged in all aspects of the Society. Besides the presidency, his energetic work included the positions of webmaster, author of the 100-page PSSC History and Members' Handbook (now part of the website), membership recruiter, program director, banquet organizer and many more activities that enabled the Society to run smoothly.



He was a pleasure to work with and we gave Ralph a memorable send-off to retirement at the 2015 banquet. I recall that he was overwhelmed by the outpouring of gratitude after his 15-year tenure of service to the PSSC. For the last few years Ralph retreated from social aspects of the hobby while dealing with personal issues, but he remained steadfast in his volunteerism, providing services to the Greene Foundation until near the very end. Ralph is fondly remembered for selfless dedication to organized philately, particularly to the PSSC.

Ted Nixon writes that Ralph became a member of the Expert Committee at the Greene Foundation in the early 2000's and operated the Crimescope forensic light source machine which provided the early generation of forensic analysis. He became a Director of the Foundation in 2006 and served until 2017.

In 2010 Ralph began selling Greene Foundation published books on line and then eBay and he continued to do so until early 2023. This was a significant administrative and marketing contribution to the Greene.

In 2011 Ralph became the key instigator for the Foundation to move upscale and purchase the VSC 6000 Video Spectral Comparator by Foster Freeman following our visit to the Smithsonian in Washington. This acquisition initiated the dramatic change in expertizing from the simple visual knowledge-based approval to a much more forensic analytical approach using features that show us what the naked eye cannot see and then printing pictures of the results. Upon purchase of the VSC6000 in early 2012 our Foundation was one of only four entities in the world using this equipment for philatelic expertizing. Today Ralph's initiative has created the standard throughout expertizing.

Ralph's contributions to the Greene Foundation were very significant, existed over many years and will benefit all of us for many years to come.

Ralph rest in peace.

Reference

Ken Snelson, Philatelic Specialists Society of Canada Newsletter April-May 2024: Page 2-3

On the cover of this newsletter is a copy of the stamp that Ralph showed in his article from September 1994. I have a soft spot for the Registered Letter stamps and have a small collection of these, especially the 5c. These were released in the Small Queen period and many Small Queen Collectors also include these stamps in their collections.



A NICE RE-ENTRY ON THE 5¢ REGISTERED

by R. Trimble

It's been some time now since I last showed you a re-entry on the 5¢ Registered Letter Stamp, Scott #F2. I did mention one in Issue #63 that I was shown by Harry Lussey at BNAPEX 93, but I don't yet have that one on film.

The one seen above is from Plate II, the sheet of 100, arranged 5 X 20, and is from Position #80 on that plate. Note the strong line in the top of the 'E' of REGISTERED, and the line in the top of the 'T' of STAMP directly below it. The clarity of these lines makes this an easy stamp to identify.

I've had a copy of this re-entry for quite some time, but the detail in the 'E' was marred by the cancellation. It wasn't until member Michael Smith sent the above lovely, clear copy to show me that I was finally able to photograph this position in all its glory.

(If any member has a copy of the misplaced entry mentioned in Issue #63 that Harry Lussey discovered, please send it to me to photograph.) §

The Brigham Estate Province of Canada Part IV



Public Auction
October 4, 2024



Eastern Auctions Ltd.

P.O. Box 250 - Bathurst - New Brunswick - E2A 3Z2 - Canada

Tel: 1(506) 548-8986 / Fax: 1(506) 546-6627

Toll Free Tel: 1(800) 667-8267 / Fax: 1(888) 867-8267

Email: contact@easternauctions.com / Website: www.easternauctions.com



5c Edward Hairlines by Jim Jung

The 1c and 2c Edward with Hairlines has been listed in Unitrade for the longest time but the 5c has no listing for Hairlines. So does it exist? Here are some images of 5c Edwards with Hairlines that should convince you that they certainly do exist.

The Hairlines variety is caused by small cracks in the plate due to curving the plate for fitting on the press¹. The small cracks would fill up with ink which would be pressed onto the paper and appear as uneven horizontal lines noticeable in the margins and numeral boxes.



Figure 1 - The cracks are easily seen on this copy, especially in the right margin, from top to bottom, and through the left numeral box.

¹ Winthrop S Boggs. The Postage Stamps and Postal History of Canada (Volume 1), Kalamazoo, Michigan, Chambers Publishing Co., 1945, Page 351.



5c Edward Hairlines by Jim Jung

It was Russell Sampson that initiated this discussion by sending me an email announcing his intention on writing an article on Hairlines in order to provide details of his research and study of this variety. Russ notes that Marler² has claimed that Hairlines should appear on the 5c issues. Well, I don't doubt that after looking at the examples I have in my collection that I feature in this article. I also sent these and more to Russ for his study.

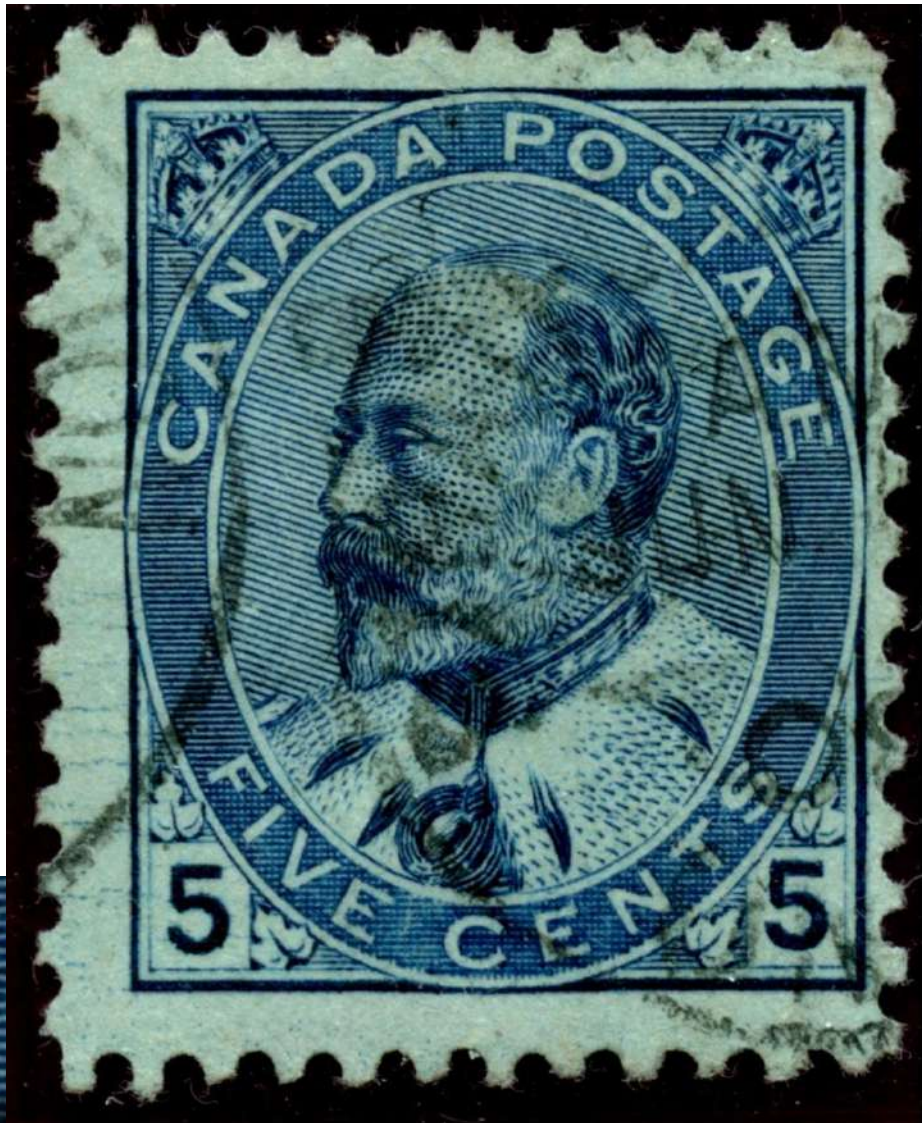


Figure 2 - This copy has clear Hairlines in the lower half of the left margin and through the left numeral box. The variety shows much stronger in the left margin than in the first stamp in Figure 1.

The right margin shows almost no sign of Hairlines except just a hint above the farthest right leaf in the margin.

2 George C. Marler. The Edward VII Issue of Canada, The National Postal Museum.

5c Edward Hairlines by Jim Jung

I sent these images and more to Russ for his study. Here is what Russell Sampson said in an email dated May 28, 2024:

“Once I get back to the hairline project I shall certainly make sure to use and properly cite your valuable contributions. Here are a couple suggestions that I've started exploring in my Admiral hairline studies.

1. In your Scott 90 samples it appears that the hairlines are frequently found in similar locations; a) in and beside the boxed "5" denomination, b) emanating horizontally from the top and bottom frame lines, c) beside the two "Crowns" and d) beside the part of the design with the horizontal intaglio lines (middle frame of design). From an engineering perspective, this is where fracturing should occur - where there are the greatest number, and extent of grooves perpendicular to the curvature of the plate.

2. Faux-hairlines. It may be really important for collectors to know what NOT to look for. This would include; a) ink smears from over-inked areas (see, top and bottom frame lines of Figure 1 and top right corner of Figure 4) b) flecks, and c) guidelines.

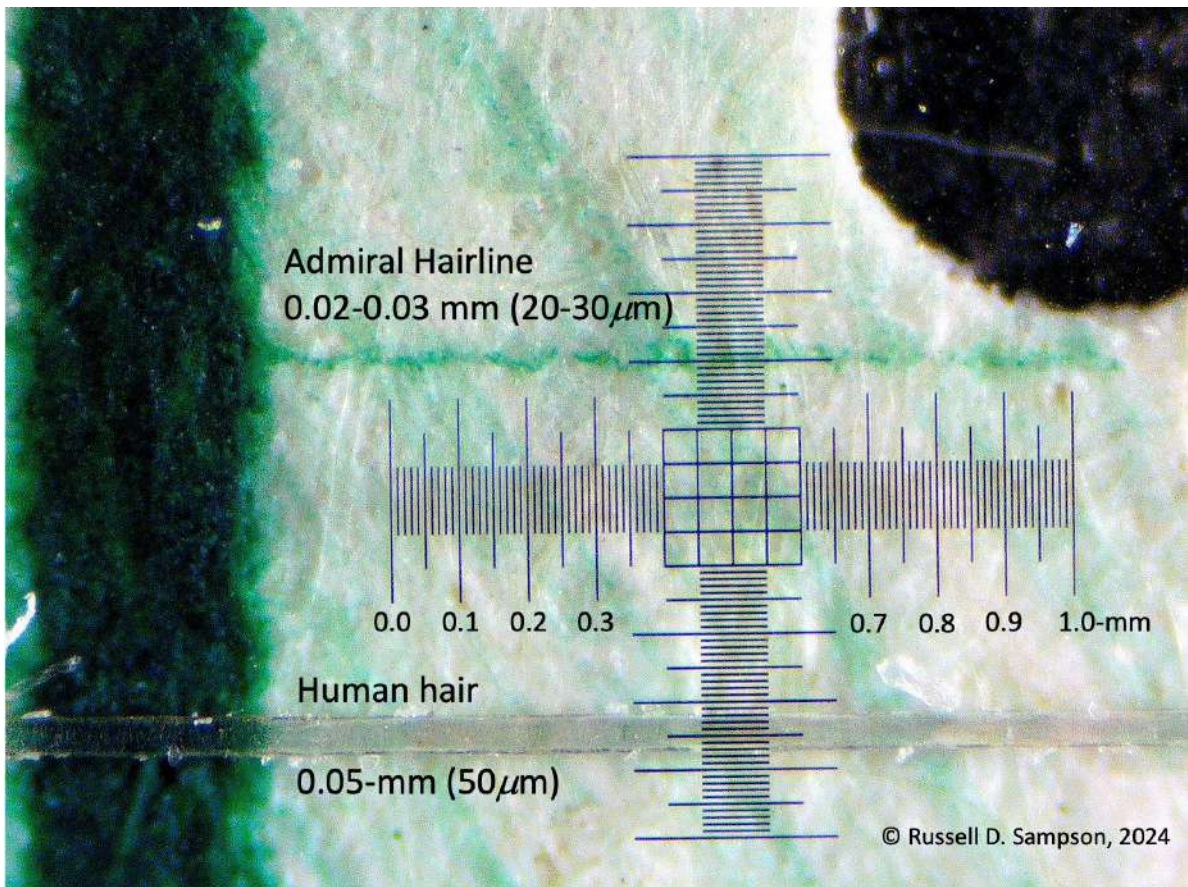


Figure 3 – Human hair compared to an Admiral hairline. Image and text used courtesy of Russell Sampson. Lookout for his Research on Hairlines. Russell is also pursuing the 5c Edward with hairlines to be a new addition of the Unitrade catalog. We look forward to reading his work.

5c Edward Hairlines by Jim Jung

I've also just finished producing an annotated microscopic image of an Admiral hairline with actual age-appropriate human hair (i.e., excuse my greyness and my dandruff). As you can see from the attached image - the width of an Admiral hairline is about half the width of a human hair. The microscope I used is a Linkmicro LM246MS digital microscope purchased on amazon.com for about \$200 USD. The scale on the image is a glass "0.01mm Microscope Reticle Calibration Ruler" (\$16 USD on <https://www.amazon.com/>) which has been placed over the stamp. I would encourage all your dots and scratches people to consider such a set up. It's an incredible piece of philatelic research equipment."



Figure 4 There are weak hairlines in the bottom half of left margin. There is also a strong guide dot in the LL corner likely signifying the lower left corner of the sheet. That puts this stamp at position 91.

5c Edward Hairlines by Jim Jung

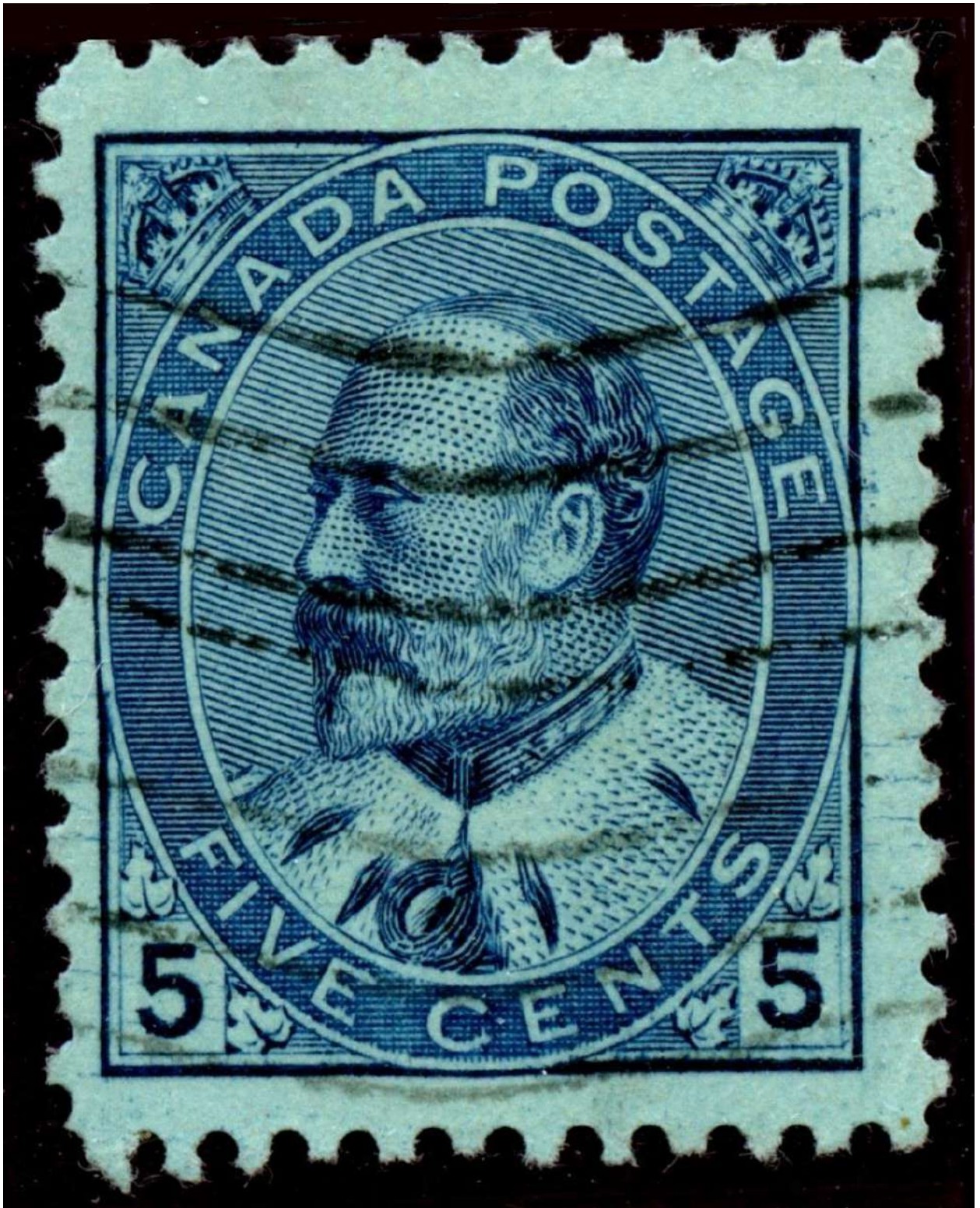


Figure 5 – Some very strong hairlines on this stamp in the lower left and the lower right margin. There are some small ink smears in the upper right margin, coming off the frameline, that Russ has cautioned us to not view as hairlines. These ink pulls or ink smears are quite common in the Edward and Admiral period.



Mark your calendars, September 28-29, 2024 is Garden City Philatelic Auctions' much anticipated inaugural auction!

We are a new philatelic auction company, located in beautiful Victoria, British Columbia, and we warmly invite you to participate in our first and future auctions. In this first sale we are proud to offer a range of material that we hope will satisfy the collecting interests of many, with a good range of Canadian, British Commonwealth and worldwide stamps as well as postal history. **Notably, this sale will feature:**

- A rare offering of Canadian Officially Sealed labels used on cover.
- The Brian Hargreaves exceptional collection of Canadian Large Queen stamps and postal history, featuring extensive holdings of postmarks on stamp and cover, including 2 and 4 ring numerals, fancy cancels, RPO and calendar collections, as well as his advanced collection of printing varieties which we believe to be the largest ever formed, die proofs, plate proofs, postal history, rates, and more, all in about 600 lots.
- The David Piercey award-winning collections of 1865-1908 Newfoundland stamps and postal history, featuring postmarks, rates and routes, frankings and much more, all in just under 200 lots.
- Lovely collections of Canadian 1897 Jubilee issue postmarks, including extensive town cancels, squared circle and R.P.O. cancels.

Stay tuned, as this sale will be hosted live on Stamp Auction Network near the end of August, with tons of generous descriptions and photographs; we will have onsite viewing before the sale, as well as onsite bidding during the auction.

- Please sign up for our email list on our website to be informed of important events.
- Once our sale is online at www.stampauctionnetwork.com, please make sure to sign up for approval to bid.

We are always accepting consignments for our future sales, and we can also make generous cash offers for your unwanted material.

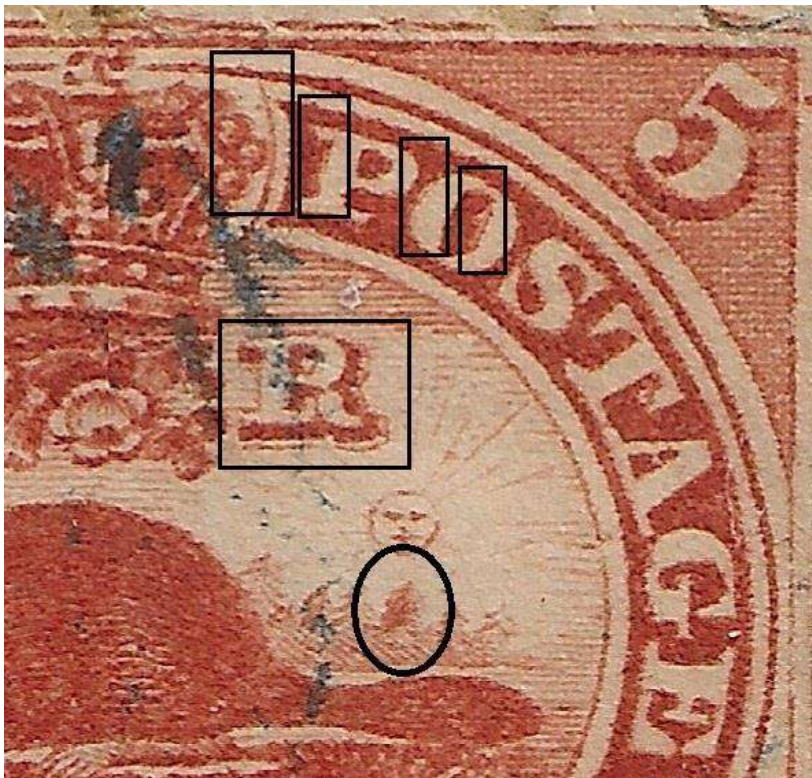
Garden City Philatelic Auctions, P.O. Box 5096 Station 9, Victoria BC, V8R 6N3
Email: info@gcpauctions.com
Website: www.gcpauctions.com
Phone: (250) 380-5423

We are proud members of the CSDA, PHSC, RPSC, BNAPS, CPS of GB, CAS and more.

Stéphane Cloutier, Auction Manager (formerly of Sparks Auctions)

5c Beaver – Valued Printing Flaws

Position 10 State 1 – The Burning Bush



The Burning Bush variety is unlisted but well known. It occurs on the first printings of the 5c and displays as a strong impression of the tree under the sun. There are also some extra marks in the R of VR, the right side of the crown and PO of POSTAGE.

Copies should be perforated $11 \frac{3}{4}$ for this early printing. This copy on cover is dated STANSTEAD DE 11 1859 in blue with a 4R45. Ex Dale Lichtenstein.

5c Beaver – Valued Printing Flaws

Position 10 State 2a – Bubble Flaw



Position 10 has this large Plate Flaw listed in Whitworth as being in State 2a. It looks like a large bubble below the E of FIVE. This did not stay for long and does not appear in State 3.

5c Beaver – Valued Printing Flaws

Position 17 State 9 – N Flaw



Position 17 has this large mark that covers a portion of the N of CENTS. It blends in with the background behind the letters and is difficult to spot other than it extends into the inner oval below the letters. This is late in the life of the plate.

5c Beaver – Valued Printing Flaws

Position 23 State 11 – Gouge Flaw



Position 23 is the unlisted but well known Gouge Flaw. It is this large mark that covers a portion of the oval above OS of POSTAGE. It is usually easy to spot. This occurs very late in the life of the plate.

There are different states of this flaw but it always looks very similar to these 2 examples.

5c Beaver – Valued Printing Flaws

Position 30 State 6b – Curved Line Flaw



Position 30 has this large line that extends upwards from the curved line to the right of the crown, goes through the oval and framelines and out into the upper margin. It is listed in Whitworth as only appearing part way through State 6 and marked as State 6b.

5c Beaver – Valued Printing Flaws

Position 34 State 9-10 –Low Moon Flaw



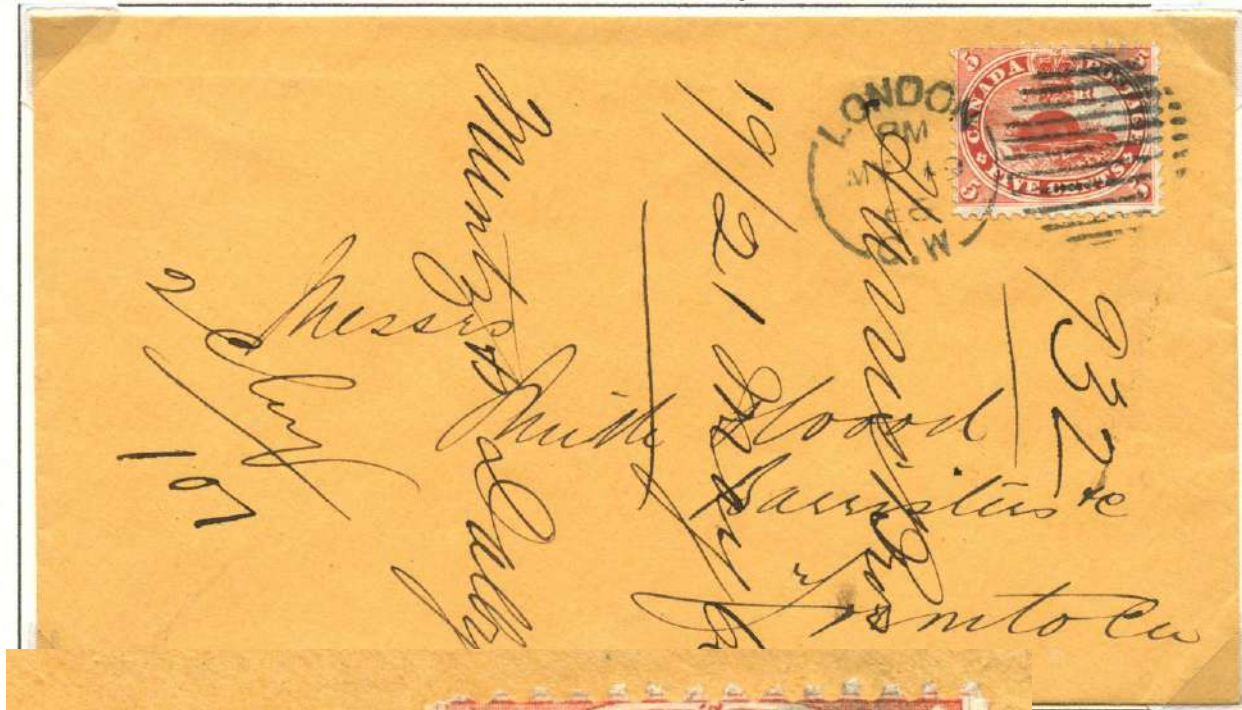
Position 34 has this large dot that is popular with collectors and is known as the Low Moon Flaw. The shape of the dot does change somewhat but is quite large and appears in the same position to the left of AG of POSTAGE.

5c Beaver – Valued Printing Flaws

Position 78 State 6 – High Moon Flaw

009

r.

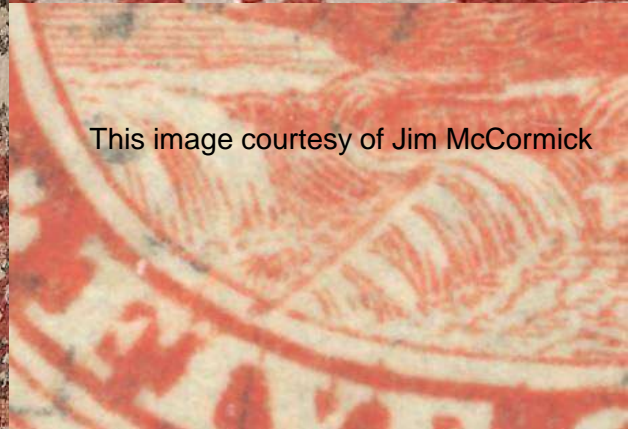


Position 78 in the earlier State 6 has the High Moon Flaw. This is an oval shaped fuzzy mark above and to the right of the sun. This mark does change its' shape but is generally quite large and in the same position above the sun. This nice cover dates the flaw at MR 19 66.

5c Beaver – Valued Printing Flaws

Position 50 State 3a – Log in Waterfall

Position 50 has this listed and well know flaw called the Log in Waterfall. It is scarce compared to the other listed flaws and occurs part way through State 3, listed as State 3a in Whitworth. Most copies show a white line diagonally through the lower portion of the waterfall. A rarer state shows a solid line. This cover is dated NO 26 62.



This image courtesy of Jim McCormick

5c Beaver – Valued Printing Flaws

Position 41 State 4 – Twig in Falls Flaw



Position 41 in State 4 has the little known Twig in Falls Flaw. This is named in Whitworth and is a small diagonal line or scratch in the lower level of the waterfall.

5c Beaver – Valued Printing Flaws

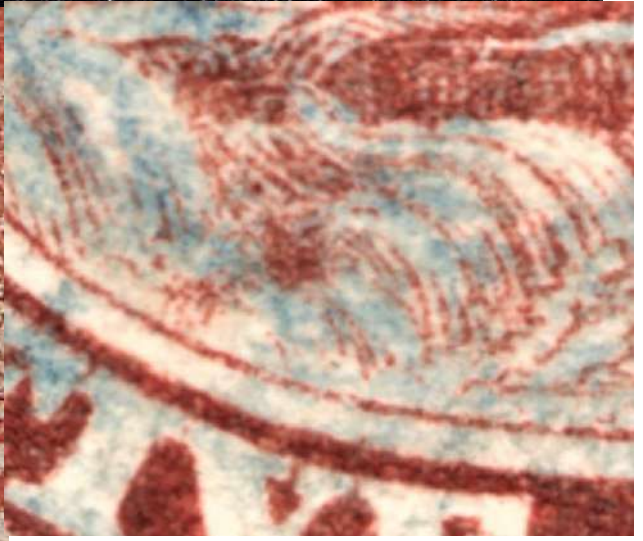
Position 53 State 9-10 – Rock in Waterfall

Position 53 in the late States 9-10 has the well known and very popular Rock in Waterfall variety. This is listed in Unitrade and appears as a large round or slightly square dot at the top of the lower level the waterfall. The shape of the dot is known to change in shape from square to round. This lovely cover is dated NEW LIVERPOOL September 17 67 and is Ex Clayton Huff.



5c Beaver – Valued Printing Flaws

Position 53 State 9-10 – Rock in Waterfall



This image courtesy of Earl Noss shows the square rock

5c Beaver – Valued Printing Flaws

Position 54 State 8 – Leaping Fish



5c Beaver – Valued Printing Flaws

Position?? State ? – Leaping Minnow



5c Beaver – Valued Printing Flaws

Position 69 State 6a



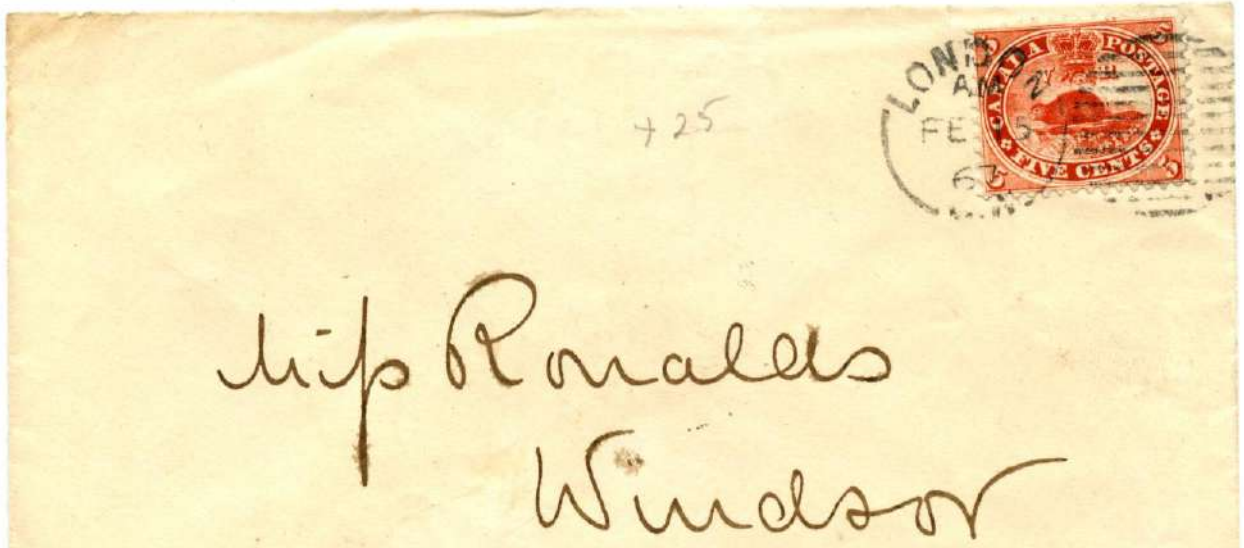
5c Beaver – Valued Printing Flaws

Position 74 State 5 – PF46



5c Beaver – Valued Printing Flaws

Position 83 State 9 – PF13a



The Pictorial Issue of 1935 by Jim Jung

The stamps of Canada released between 1927, just after the Admiral Issue, and 1950 near the end of the reign of George VI, is an area of study that is just being delved into by collectors and the Unitrade catalog. You may have noticed some new entries in the Unitrade from stamps in this era of George V and George VI. In this article, I'd like to point out that the Pictorial Issue of 1935 is a good issue to use for hunting of varieties. I was able to purchase a great quantity of stamps in this issue to browse through. Since not many collectors have taken notice of these issues, these stamps can be easier to find, and when found, it is less likely that another collector has gone through them looking for flaws and re-entries. Now, here are some of the better stamps I found in my hunt. I hope you have similar luck if you plan on hunting this issue. Just a note before we begin, the Billig's catalog, which some of you may have lists many flaws in the Pictorial Issue, most which are not listed anywhere else.



Figure 1 – The listed flaws on this stamp are the famous **Broken Leg** variety and the **Birdcage** variety. Here are a few flaws that are completely unknown. This first one is a large scratch through AN of CANADA.

The Pictorial Issue of 1935 by Jim Jung

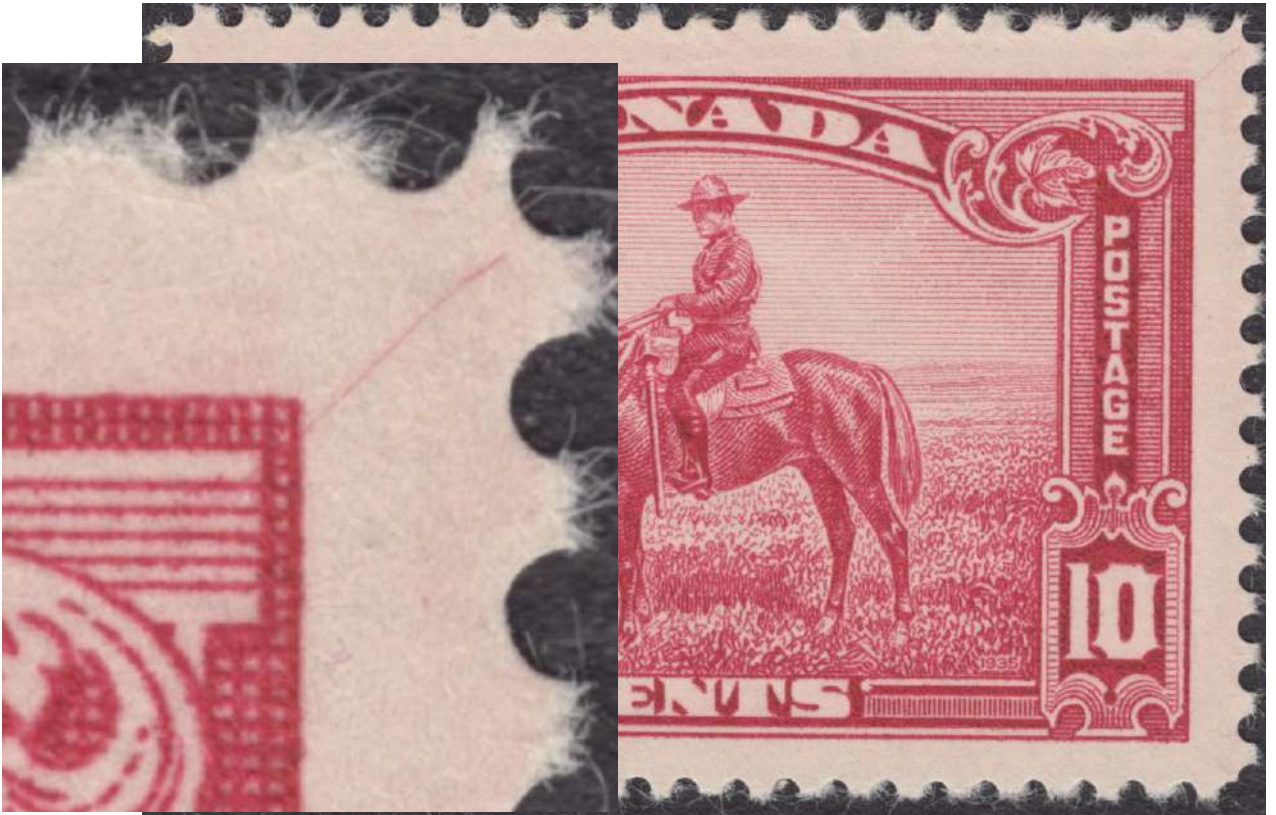


Figure 2 – It may be that this flaw is too small to list in Unitrade and is something that is only listed in specialty books. This one is listed in Reiche as Position 1 UR25 Hairline Top right.



Figure 3 – This one has a nice scratch through the C of CANADA that continues down in front of the horses nose.

The Pictorial Issue of 1935 by Jim Jung



Figure 4 – These dots look like they could be tiny pieces of a re-entry or they could just be a row of dots through the letters of CANADA.



Figure 5 – Some of you may have heard of the **Golf ball in the Grass** flaw (left). Here is another flaw that has two golf balls in the grass (below).

The Pictorial Issue of 1935 by Jim Jung

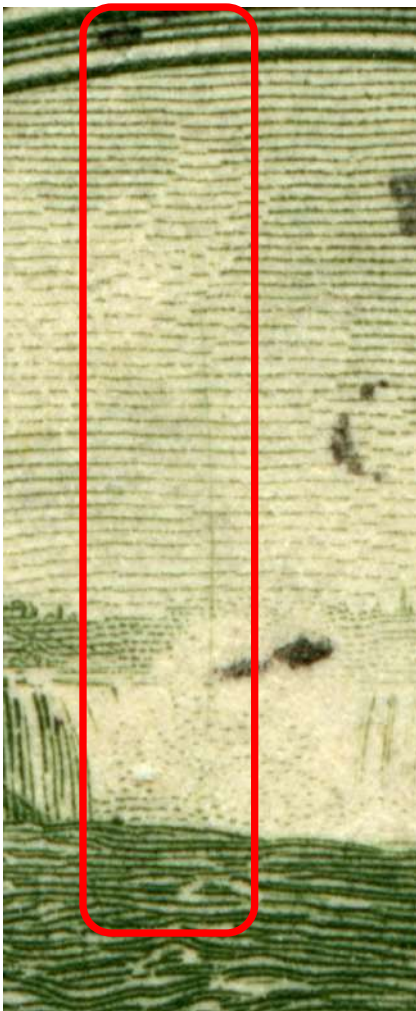
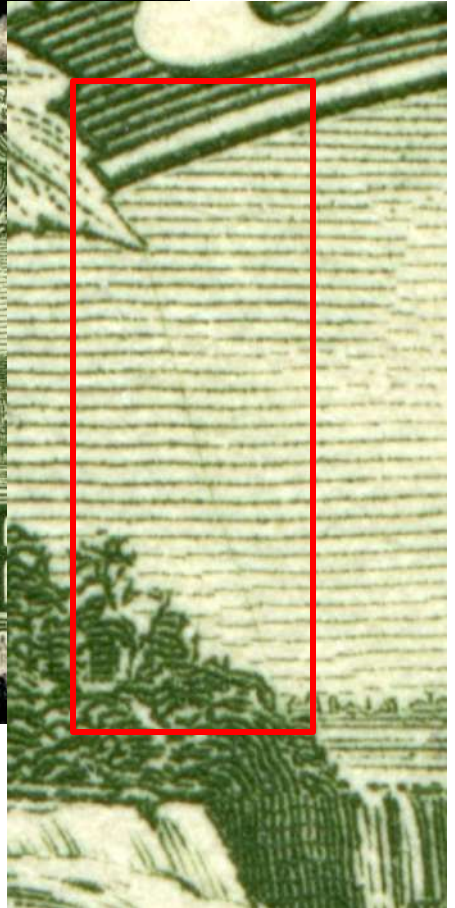


Figure 6 (top) and 7 (bottom) – The 20c Niagara Falls stamp is surprisingly one that has a lot of large scratches across the entire plate. Here are some nice ones that are listed in Billigs.



The Pictorial Issue of 1935 by Jim Jung



Figure 8 – This stamp has strong marks beside the T of POSTES and a heavy scratch below the UR leaves.



Figure 9 – There are clear lines in the N of CENTS that look like a re-entry. This is listed in Billig's catalog as #17 Two lines in N of CENTS PI 1 Pos 17 UR.



Figure 10 – This stamp has odd slightly curved mark below the C in VICTORIA and is listed in Billig's as #4 Dot below C in VICTORIA PI 1 Pos 35 LL

DEVENEY STAMPS LTD.

ESTD 1977

🍁 Specializing in Canadian Varieties & Re-entries 🍁



Featuring high resolution images

ONE OF CANADA'S LARGEST ONLINE STAMP INVENTORIES

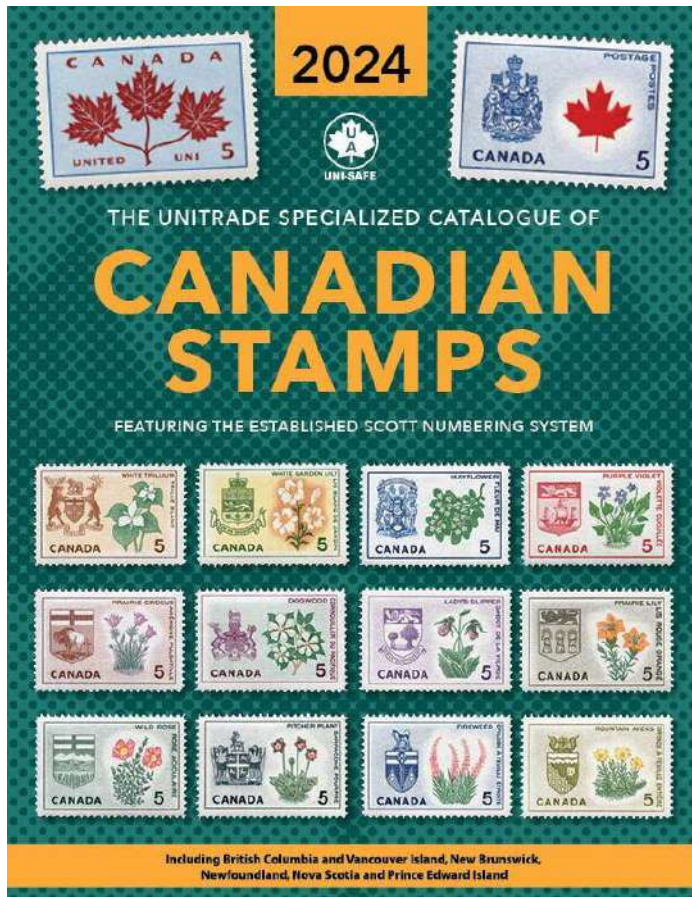
WWW.DEVENEYSTAMPS.COM

TOLL FREE: 1-888-232-0282



info@deveneystamps.com

Unitrade Sale by Jim Jung



Linn's Stamp News reports that the owner of Unitrade Associates, Gino Casa, will retire in November 2024 and has decided to sell the Unitrade business. There is an announcement on the [Unitrade website](#) with reads in part:

After more than 50 years in business, the owner of Unitrade Associates is retiring in November, 2024 and has put the business up for sale.

It has been our pleasure serving the stamp and coin collecting community throughout the years and hope that we have left an enduring legacy with our quality products and one-of-a-kind customer service.

Thank you for your patronage.

[Read the complete Linn's Stamp News article here.](#)