

# Dots & Scratches

Re-entries and Constant Plate Varieties  
BNAPS Study Group



FIG. 9



2c Large Queen – Large  
Scratch in Right Margin,  
Harrison Figure 9  
(See Page 34)

# Dots & Scratches

Re-entries and Constant Plate Varieties

BNAPS Study Group

May 2024, Volume 10, Number 2, Whole Number 34

## Table of Contents

My Two Cents .....	3
Early and Late States of the 6 cent Small Queen position C26, Lesser 5-on-6 Variety.....	5
by Jim McCormick	
Flyspecking Finds – 50c Admiral.....	8
by Jim Jung	
10c Consort – Late Printing Flaws .....	10
by Jim Jung	
5c Beaver – 5c Plate Scratch Positions .....	18
by Jim Jung	
About the Cover By Jim Jung .....	34
Unitrade Sale .....	35
by Jim Jung	

### **BNAPS Re-entries and Constant Plate Varieties Study Group**

This newsletter and previous issues are available as PDF files from the [BNAPS website](#).

Please send submissions and feedback about the newsletter to the Editor – jimjung8@gmail.com.  
All other correspondence should be addressed to the Chairman, bsbvp88@hotmail.com

Dear Study Group Member,

The Orapex Show is on May 4-5 and a good reason to attend on Sunday is the Free Food at the Pence Cents Study Group Meeting, paid for by our Advertisers: Eastern Auctions and Maresch & Son. Ron Majors will be hosting the Meeting on Saturday at 4-5:30pm in Hall C. The current program is: Luc Freve, early California-Canadian mail; Ron Majors, Update on Decimal Census.

The Solar Eclipse was here and then it was gone. It was all people could talk about for a week then everyone forgot about it. It was cloudy where I was, but the sun would peak out now and then to show the eclipse. It was certainly dark and cold during totality. Here are some pics from Toronto.

Jim Jung



# DEVENEY STAMPS LTD.

ESTD 1977

🍁 Specializing in Canadian Varieties & Re-entries 🍁



Featuring high resolution images

ONE OF CANADA'S LARGEST ONLINE STAMP INVENTORIES

[WWW.DEVENEYSTAMPS.COM](http://WWW.DEVENEYSTAMPS.COM)

TOLL FREE: 1-888-232-0282



[info@deveneystamps.com](mailto:info@deveneystamps.com)

# Auction Announcement

May 22-25, 2024

General Sale – Pence & Cents

Visit our website for  
auction details & previews



1p Dickens' Head, rare plate essay block in dim brown on bond paper.



1859 spectacular & unique perforated Pence cover to France; ex. Dale-Lichtenstein



12p black proof with diagonal SPECIMEN overprint



12p black proof with vertical SPECIMEN overprint in green



ABNC se-tenant pair of trade sample proofs in bright yellow.

1859 10c black brown, select used example.



1857 6p reddish purple on very thick paper, a pristine flawless example.



1851 glorious 18-pence cover to France; the earliest pence stamp franked cover to Continental Europe. ex. Nickle, Wilkinson

Selection of proofs, stamps and exceptional Pence covers. Richard P. Thompson Cents Issue exhibit collection with complete printing orders with its complex array of shades, perforations and constant plate varieties, subject of a BNAPS Exhibit book titled: "The Development of the Stamps of the First Decimal Issue of Canada 1859-68".



## Eastern Auctions Ltd.

P.O. Box 250 - Bathurst - New Brunswick - E2A 3Z2 - Canada

Tel: 1(506) 548-8986 / Fax: 1(506) 546-6627

Toll Free Tel: 1(800) 667-8267 / Fax: 1(888) 867-8267

Email: [contact@easternauctions.com](mailto:contact@easternauctions.com) / Website: [www.easternauctions.com](http://www.easternauctions.com)



## Early and Late States of the 6 cent Small Queen position C26, Lesser 5-on-6 Variety by Jim McCormick

The BC plate was created some time in the late 1880's but the first stamps from this plate did not appear until October 1890, and in the chocolate brown shade. There are few constant plate varieties on these early printings. Most of the interesting varieties such as the major 5-on-6, hairball, and major re-entries from roughly 1897 or later. But there is a minor 5-on-6 re-entry known in chocolate brown position C26, caused by over-rocking the transfer roll when the stamp design was first entered into the position above (C15). This one shows an arc through the Queen's tiara, that is similar to the "strand of hair" on the 1 cent. It also shows two spurs off the bottom frame line, and two scratches in the lower right 6.



Early state choc brown

## Early and Late States of the 6 cent Small Queen position C26, Lesser 5-on-6 Variety by Jim McCormick

I have seen several examples of this variety, however recently I found another in a used strip of 4. But the arc through the tiara was barely visible, the spurs were badly worn, and there was only a trace of one of the scratches in the right 6. Then I realized that the left frame line was doubled, and the center of the left 6 was also bloated, another sign of re-entry. So we have this position C26 variety in two states. The early state in chocolate brown, and the late state showing doubling from re-entry. The lower 5% of the stamp design appears weak in the re-entered state, so perhaps there was an attempt at burnishing out the spurs.



Late state after re-entry

# Early and Late States of the 6 cent Small Queen position C26, Lesser 5-on-6 Variety by Jim McCormick

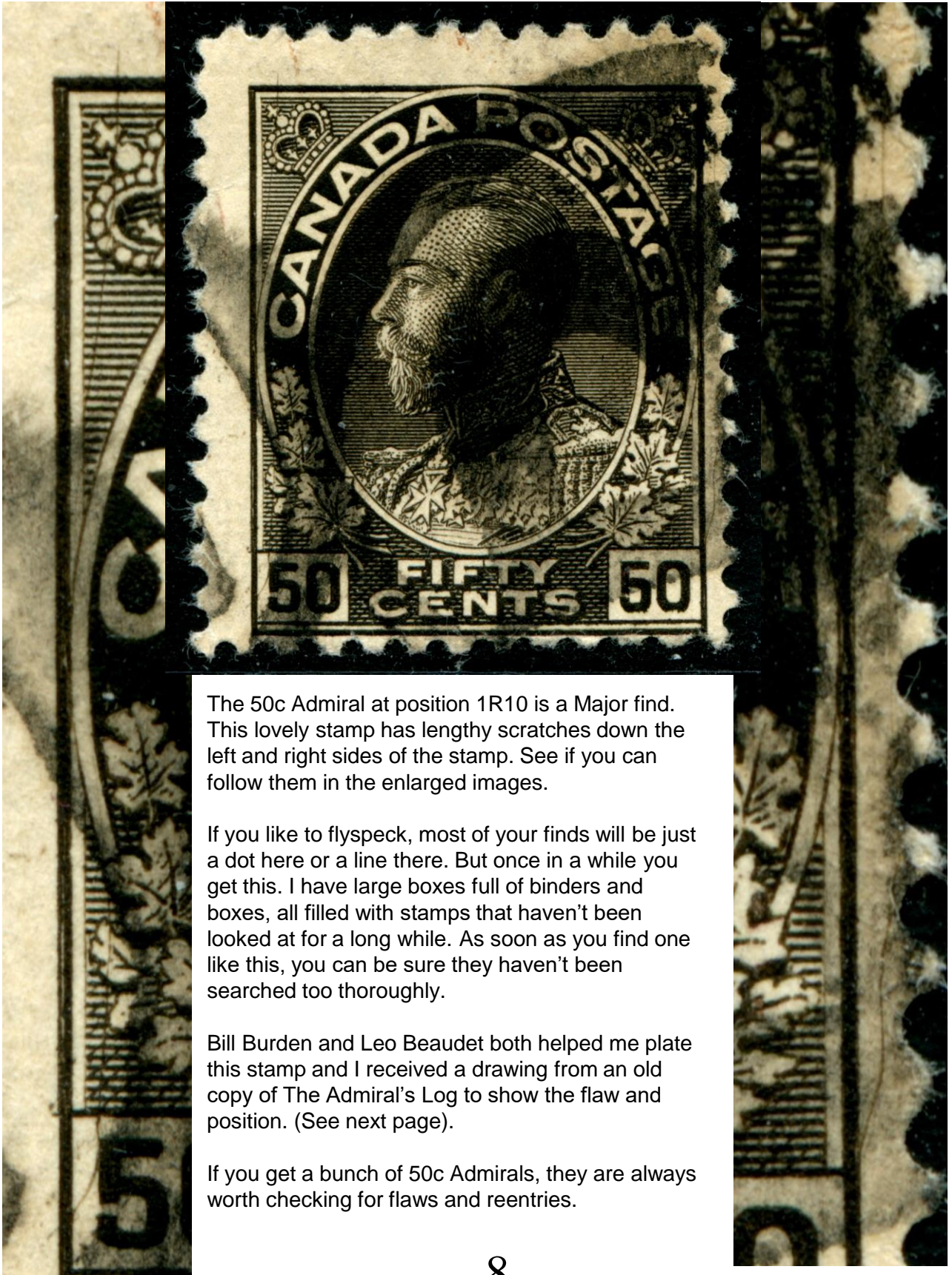


The Complete Strip of Four

## References

Bill Burden, Small Queen CPV Project  
<https://wgburden.com/start.html>

## Flyspecking Finds – 50c Admiral by Jim Jung



The 50c Admiral at position 1R10 is a Major find. This lovely stamp has lengthy scratches down the left and right sides of the stamp. See if you can follow them in the enlarged images.

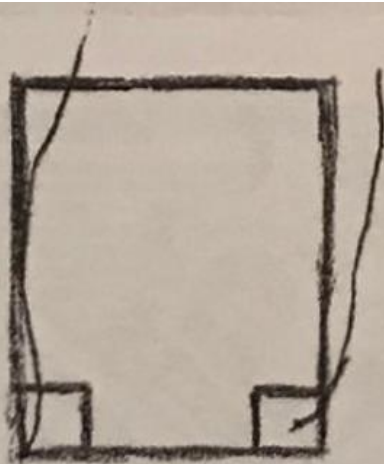
If you like to flyspeck, most of your finds will be just a dot here or a line there. But once in a while you get this. I have large boxes full of binders and boxes, all filled with stamps that haven't been looked at for a long while. As soon as you find one like this, you can be sure they haven't been searched too thoroughly.

Bill Burden and Leo Beaudet both helped me plate this stamp and I received a drawing from an old copy of The Admiral's Log to show the flaw and position. (See next page).

If you get a bunch of 50c Admirals, they are always worth checking for flaws and reentries.

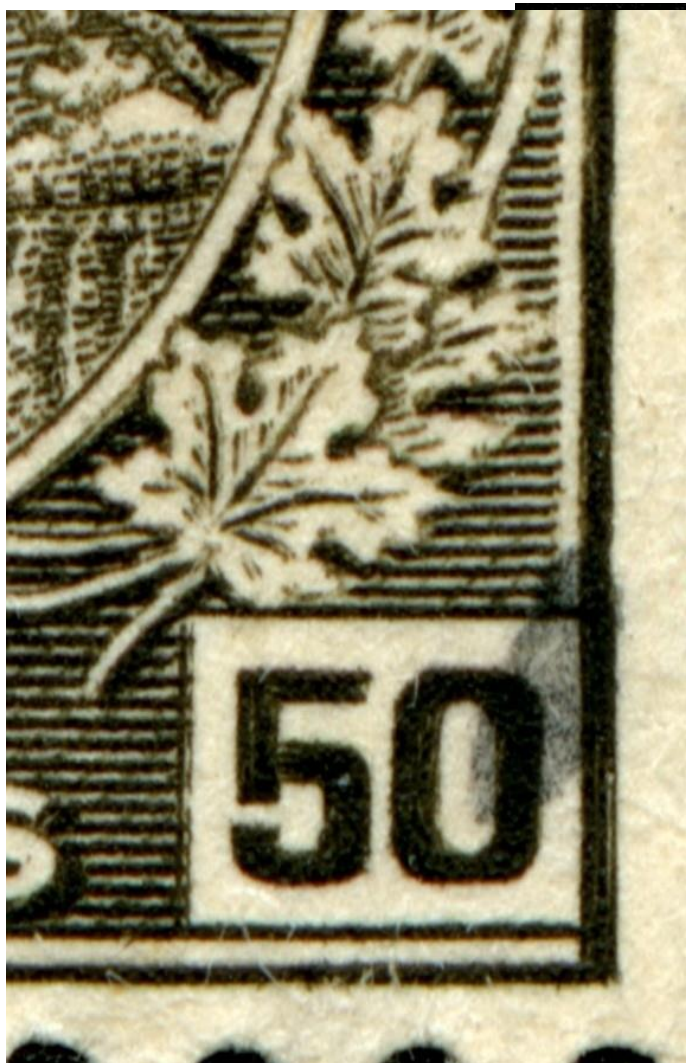


## Flyspecking Finds – 50c Admiral by Jim Jung



Walter Krasowski, The Admiral's Log Vol  
Xii, No 1 Dec 2020 (Rev 1), Flaws on Plate  
1 of the 50c Page 94

1R10. Scratches at left and right.



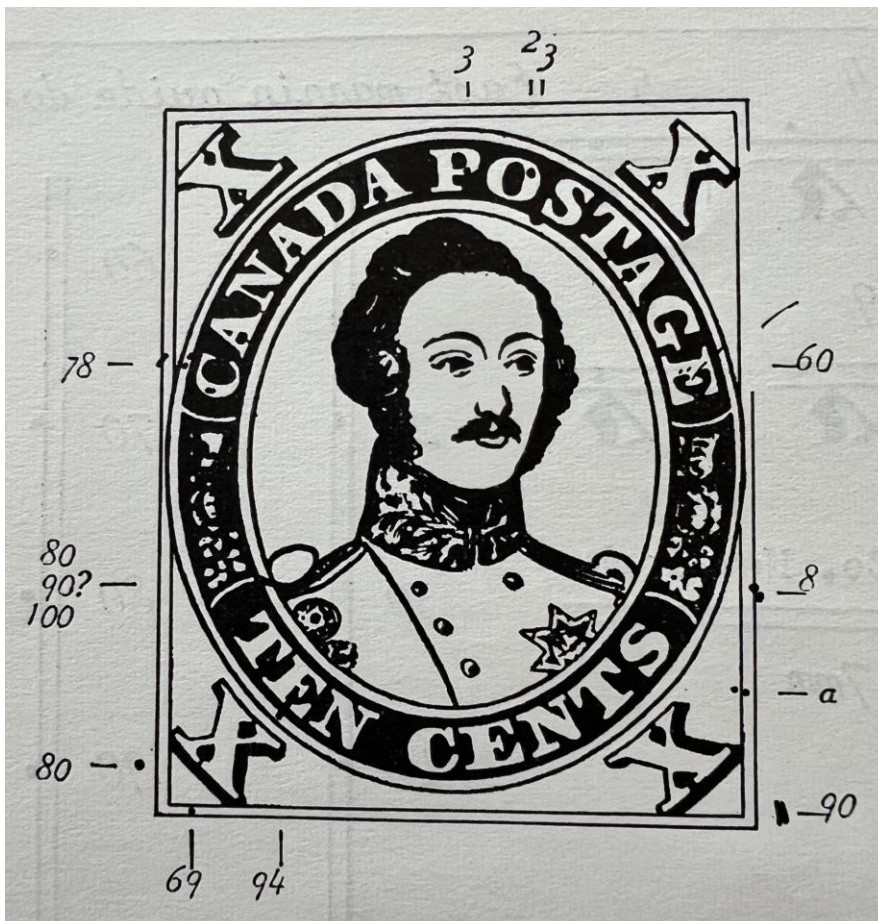
50c Admiral Pos 2L82 reentry RNB and LR leaves

## 10c Consort – Late Printing Flaws by Jim Jung

The short story on the 10c Consort is that there was one plate and there were two General repairs done to the plate. Throughout the life of the plate, even after the repairs had been done, the listed String of Pearls, Double Epaulettes and the two Major Reentries existed.

The first repair was done during the 17<sup>th</sup> Printing Order of July 9, 1864. After approximately 30,700 sheets were printed, the repair took place and proofs were pulled in the Violet Shade. After this repair, the C Flaw appeared in part of Column 9 and in part of Column 10. The C Flaw was not present on the plate prior to this repair. It is interesting to note that there are Proof Sheets in the Violet shade that do not have the C Flaw, even though Whitworth mentions a Proof pulled in Violet after the repair. There was an earlier Proof Sheet pulled in the Violet Shade before the repair seen in Ken Kershaw's BNAPS Book on the 10c Consort. Unitrade lists the Lilac Proof is pulled in 1864.

23,250 sheets were printed before the second repair took place during the 26<sup>th</sup> Printing Order of August 21, 1867. This was near the end of the life of the plate after Confederation on July 1, 1867. On April 1, 1868, the following year, the Large Queen Issue was released. Proofs were also pulled after this repair in the Lake Colour. A single diagram in Whitworth on Page 78 of his book **The First Decimal Issue of Canada 1859-68**. These are also illustrated with Full Colour images in Ken Kershaw's book on the 10c Consort. Both these books are excellent resources for the Decimal Issue and the 10c Consort in particular. This article will display some of these varieties which are hard to find since they were only printed between September 1867 and April 1868. The Observed dates from Whitworth are November 28, 1867 to April 1868.



Whitworth, Geoffrey, *The First Decimal Issue of Canada*, The Royal Philatelic Society, London 1966, Page 78

## 10c Consort – Late Printing Flaws by Jim Jung



Position 3 – You probably are aware of the String of Pearls flaw listed in Unitrade. After the 2<sup>nd</sup> repair, an extra flaw appeared at Position 3. This came in the form of marks in and below POS of POSTAGE. Earl's copy below shows a slightly different state of the flaw with a stronger mark in the O and below the S of POSTAGE.

This closeup Image courtesy of Earl Noss



## 10c Consort – Late Printing Flaws by Jim Jung



Position 8 has the left half of the Imprint in the top margin. Although Whitworth has put this flaw on this drawing of late printing flaws, I have found this flaw described in Ken Kershaw's book on an earlier printing.

10c Consort – Late Printing Flaws by Jim Jung

Position 78



# 10c Consort – Late Printing Flaws by Jim Jung

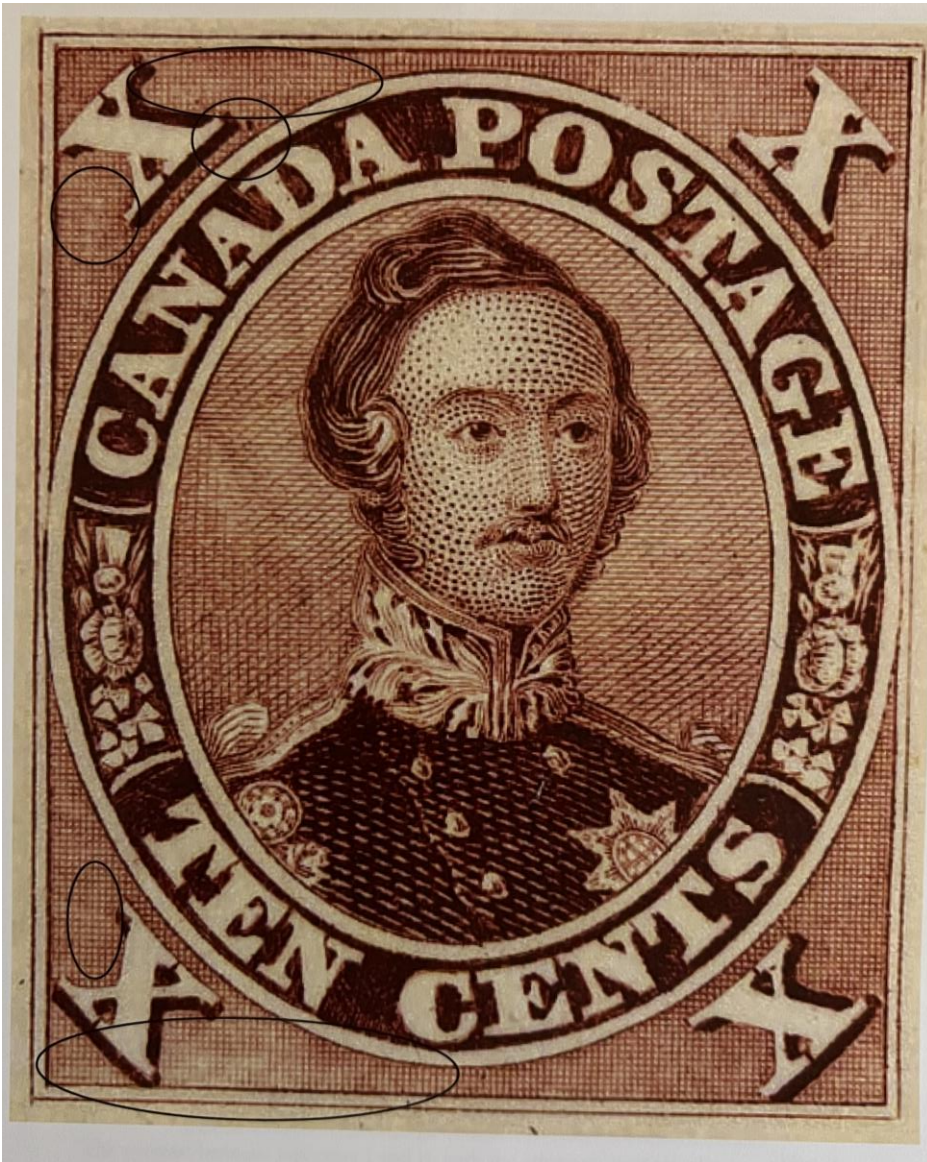


Position 100



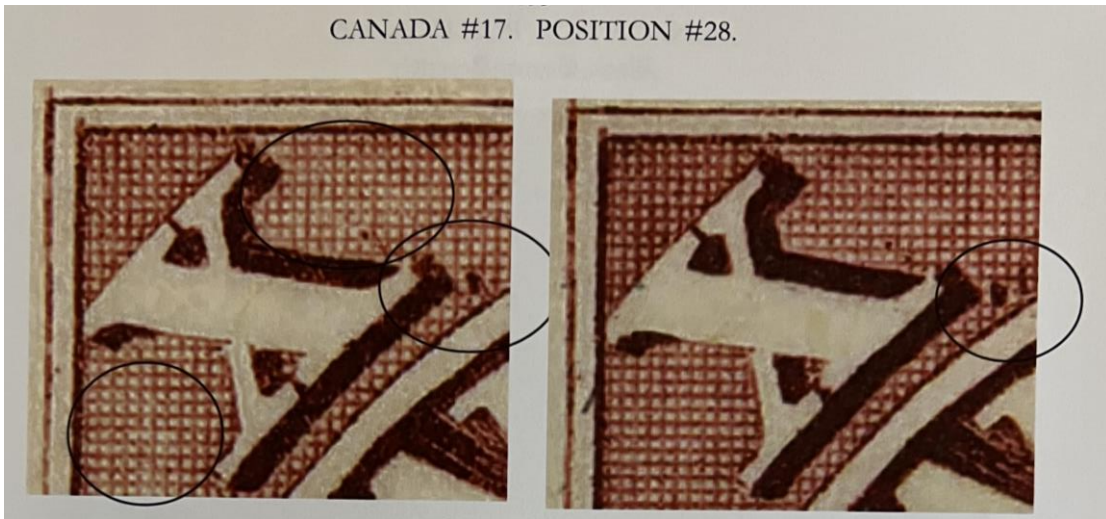
Images courtesy of Earl Noss

# 10c Consort – Late Printing Flaws by Jim Jung

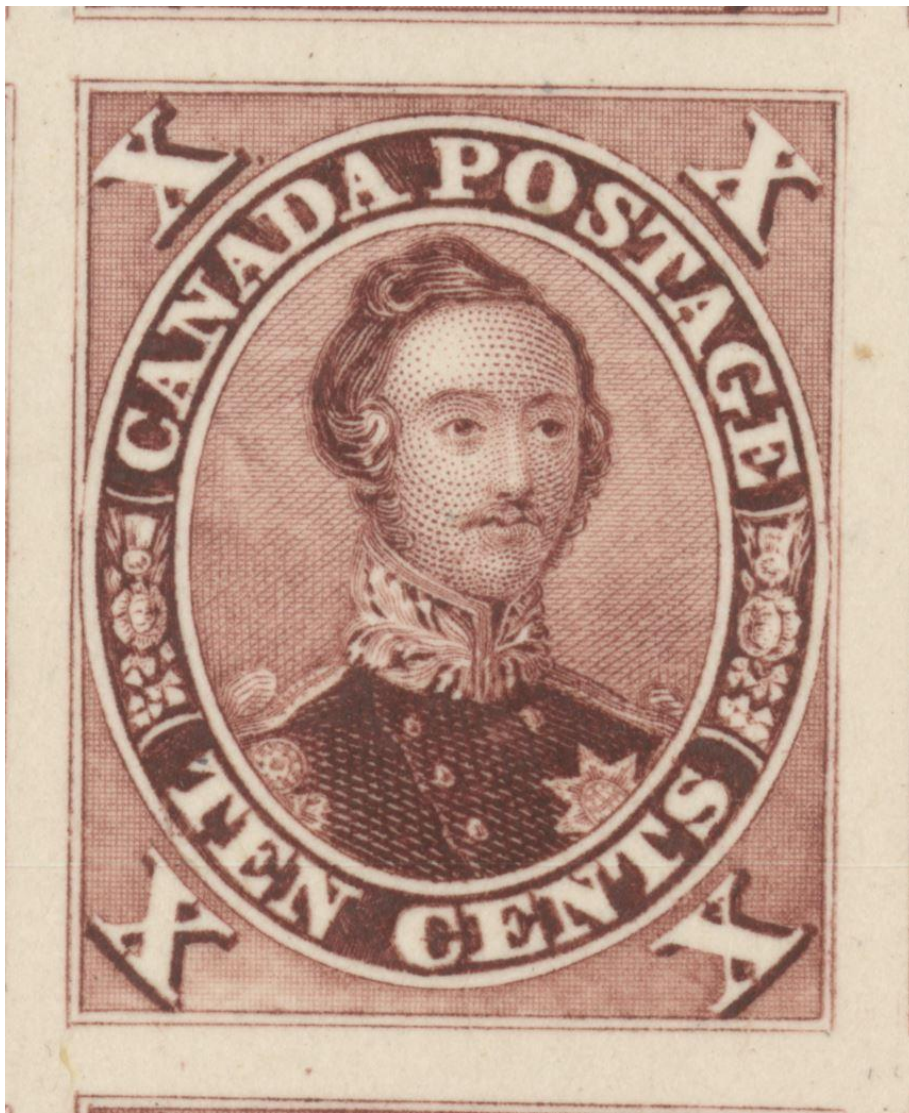


The heavy dot above D of CANADA is pictured in Ken Kershaw's 10c Consort book at position 28. The book uses Dr Jim Watt's late printing sheet and he pointed this little flaw out to me. This flaw is not described in Whitworth in his drawing of late printing flaws.

CANADA #17. POSITION #28.



## 10c Consort – Late Printing Flaws by Jim Jung



Here is a second copy of the flaw at position 28 showing the heavy dot above D of CANADA. This is taken from a late proof sheet scanned for us by Saskatoon Stamps.



# DEVENEY STAMPS LTD.

ESTD 1977

🍁 Specializing in Canadian Varieties & Re-entries 🍁



Featuring high resolution images

ONE OF CANADA'S LARGEST ONLINE STAMP INVENTORIES

[WWW.DEVENEYSTAMPS.COM](http://WWW.DEVENEYSTAMPS.COM)

TOLL FREE: 1-888-232-0282



[info@deveneystamps.com](mailto:info@deveneystamps.com)



OTTAWA'S NATIONAL STAMP EXHIBITION  
EXPOSITION PHILATELIQUE NATIONALE D'OTTAWA

**ORAPEX 2024**

May 4 10am-6pm

May 5 10am-4pm

Nepean Sportsplex  
1701 Woodroffe Avenue  
Ottawa, Ontario K2G 1W2

Our theme for 2024 is "Marcophily/Postmarks." 2024 will mark the 61st anniversary of this show, which is managed by volunteers drawn from the RA Stamp Club, the Amicale des philatélistes de l'Outaouais, the Ottawa Philatelic Society and related philatelic societies and organizations. ORAPEX is one of only a few national-level stamp shows held annually in Canada and is part of the American Philatelic Society's "World Series of Philately."

## 5c Plate Scratch Positions by Jim Jung



### **Position 19 State 3, Whitworth PF25, Vertical Scratch thru E of CENTS**

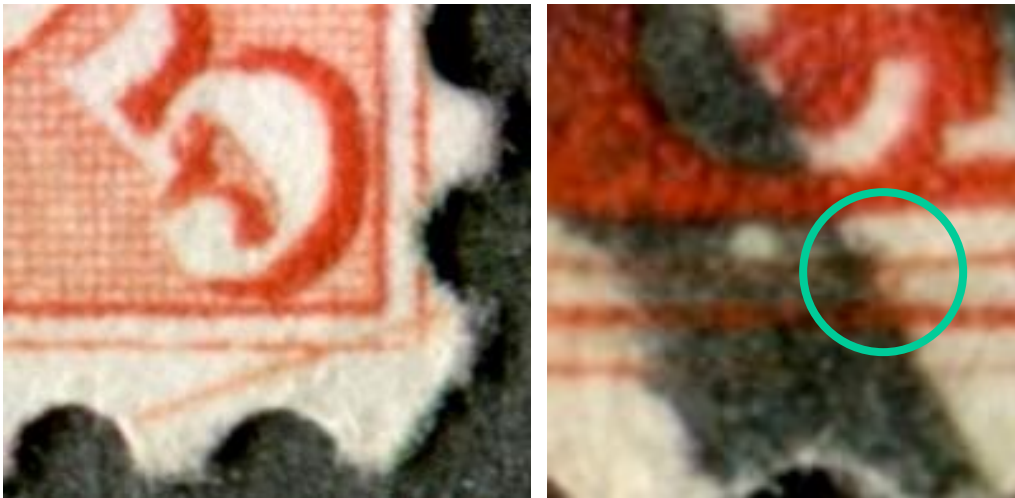
When collecting the 5c Beaver, you will find a number of Plate scratches, many of them light but very substantial. It's quite difficult to find some of these as these fine scratches wore away fairly quickly or were corrected quickly. I've tried to put together a summary of these stamps from Mike Smith's, and my own collection, with closeup images as these are sometimes difficult to notice. You need a sharp eye to catch some of these beautiful flaws. You might notice that there are a number of nice plate scratches in State 4 of the plate, especially in the center of the sheet



## 5c Plate Scratch Positions by Jim Jung



Position 35 State 4, Whitworth PF11, Diagonal scratch in Lower right corner. The extra flaw in the image at right below is Huff's Flaw H7009, described as "two dots below C of CENTS."



This stamp is from Mike Smith's collection.

## 5c Plate Scratch Positions by Jim Jung

### Position 39 State 4, Whitworth PF8, Railroad Tracks at

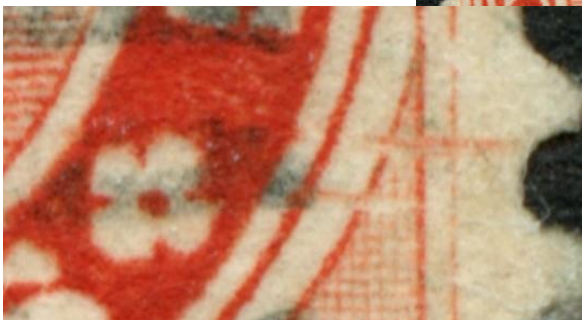
**right.** This flaw is easier to find as the two scratches are heavy and more visible. It also lasted for 2 States of the plate.



State 4 images courtesy of Michael D. Smith

### Position 39 State 5, Whitworth PF8, Railroad Tracks at

**right.** The later State 5 stamp has a weaker impression of the two scratch lines. Both stamps also have Huff Flaw H3016, short light scratches in the lower left margin.



## 5c Plate Scratch Positions by Jim Jung

**Position 48**  
**State 2**  
**Whitworth PF1**  
**Scratch thru**  
**POST.** The marked  
closeup below shows  
the very faint, but  
extensive scratch from  
the upper margin to  
the T in POST.



This stamp is from Mike Smith's  
collection.

## 5c Plate Scratch Positions by Jim Jung



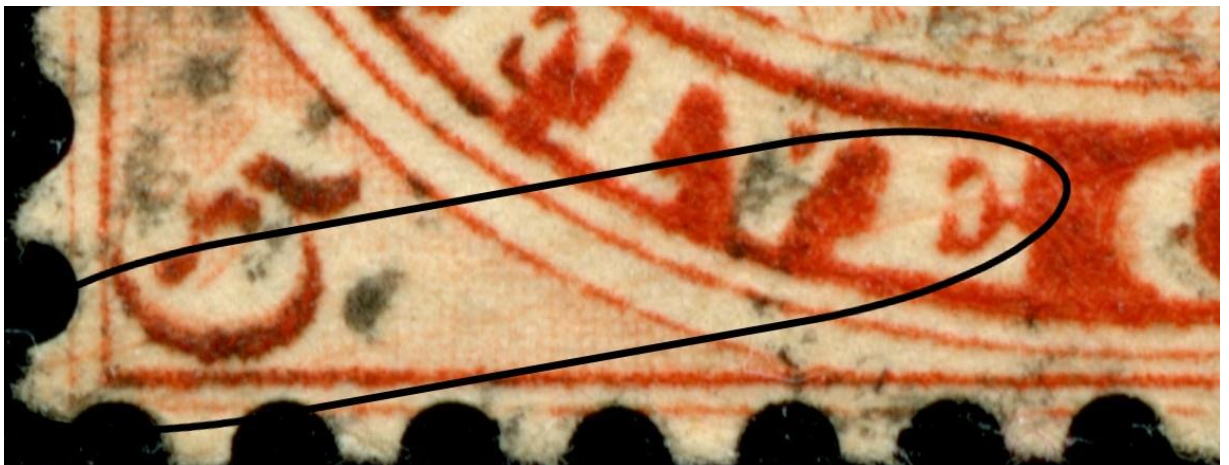
Position 61 state 5, Unlisted in Whitworth, Scratch from R of VR through A of POSTAGE. This stamp can be plated using the dots at the lower left margin.



5c Plate Scratch Positions by Jim Jung



Position 62 state 5a, Whitworth PF16, Scratch through lower left 5 and E of FIVE



## 5c Plate Scratch Positions by Jim Jung



Position 63 State 1 PF1a, PF114c diagonal scratch through O of POSTAGE and upper right 5. PF86b is a single dot above the center of the crown. PF114c is a single dot below C of CENTS between framelines. H7036 is a dot below E of CENT. This proof is from Mike Smith's collection.





## 5c Plate Scratch Positions by Jim Jung



**Position 64 State 4**  
**Whitworth PF13 is the curved railway tracks through NT of CENTS and Whitworth PF28a are the many long and short scratches below the crown, through the sun and the trees reaching the right side of the oval.**

This copy from Mike Smith's collection is the strongest I have seen. Most copies do not show the scratches below the crown area. The marks through the lower right 5 are also a constant part of PF13. <sup>25</sup>

## 5c Plate Scratch Positions by Jim Jung



**Position 64 State 4 Whitworth PF13 is the curved railway tracks through NT of CENTS and Whitworth PF28a are the many long and short scratches below the crown, through the sun and the trees reaching the right side of the oval.**

This copy from my collection is nice but the scratches are just a bit lighter than the copy on the last page. The scratches below the crown area are less noticeable but the other scratches are quite strong.

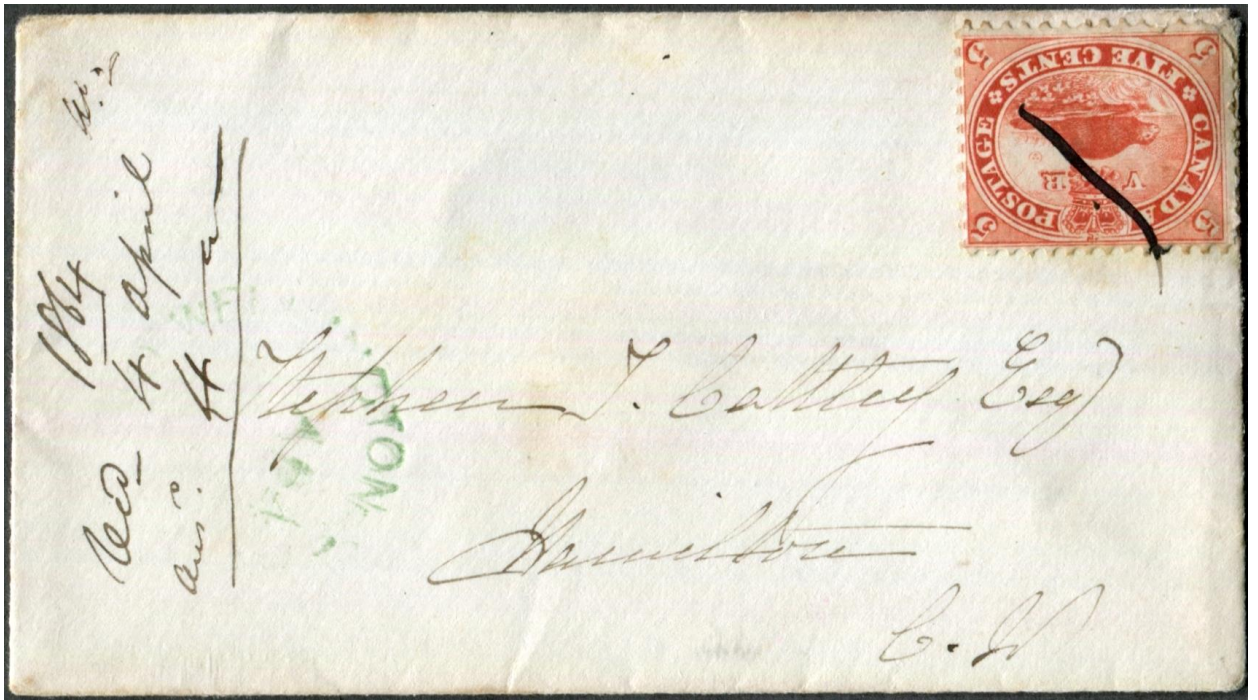
5c Plate Scratch Positions by Jim Jung



Position 65 State 4, Whitworth PF23a, Scratch through the trees and the G of POSTAGE



## 5c Plate Scratch Positions by Jim Jung



**Position 65 State 4, Whitworth PF23a, Scratch through the trees and the G of POSTAGE. Mike Smith found this wonderful copy of this flaw on a cover dated in manuscript at left: 1864 Rec'd 4 April. So now we can date the time of the flaw to the Spring of 1864. The flaw on this copy is very light so stronger copies would be from before April 1864.**



5c Plate Scratch Positions by Jim Jung



Position 75 State 4, Whitworth PF7, Long scratches above the sun through G of POSTAGE. This copy in the Brownish Red shade shows the flaw very strong. It is also a very clear printing.



## 5c Plate Scratch Positions by Jim Jung



**Position 75 State 4, Whitworth PF7, Long scratches above the sun through G of POSTAGE.** This copy from Mike Smith shows the flaw at its' weakest point. It looks quite different but if you see a copy, you should grab it as this flaw is quite scarce. It is only listed in State 4 of the plate. Whitworth states that it was removed for State 5 but judging from this copy, there wasn't much to remove.



## 5c Plate Scratch Positions by Jim Jung



**Position 80 State 3, This one is difficult to see. You really have to look**

**carefully.** Whitworth does not have a Plate Flaw number for this scratch and only mentions it beside the drawing for Position 80 that this occurs in State 3. The small dot under the O of POSTAGE in the oval is PF48a and the left side framelines and ovals show traces of Reentry 38a.

5c Plate Scratch Positions by Jim Jung



Position 90 State 4a, Whitworth PF20, Unitrade 15viii, this is the Split Beaver variety that is listed in Unitrade.

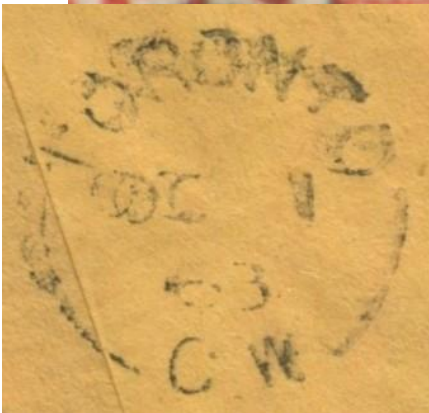




## 5c Plate Scratch Positions by Jim Jung



**Position 90 State 4a, Whitworth PF20, Unitrade 15viii, this is the Split Beaver variety that is listed in Unitrade.** This is a beautiful cover dated LONDON SP 30 63 with a stamp showing the variety. Although partially hidden behind the duplex grid of the postmark, it can still be seen in the closeup below.



There is a TORONTO OC 1 63 single split ring receiver on the back.

### References

Geoffrey Whitworth, *The Five Cents Beaver Stamp of Canada*, London England, Royal Philatelic Society, 1966.

## About the Cover by Jim Jung

I started my specialization in Canadian stamps collecting the Large Queen Issue. There were the stamps, Mint and Used, the Shades, the Papers, the Watermark and finally the Reentries and Plate Flaws. It's a fascinating set of stamps to study and collect.

It was Horace Harrison who originally made the drawings for the Plate Flaws of the Large Queen Issue. His article called Constant Varieties of the 1868 Issue of Canada shows his drawings of the main flaws and reentries for the 1/2c, 2c, 3c, 6c, 12 1/2c and 15c. Duckworth has used these drawings in their book "The Large Queen Stamps of Canada and Their Use" and added more information.

The 2c Large Queen has the Major Reentry at Position 7 and the Unitrade listed Spur and Needle Nose varieties. The cover image shows another large flaw that is rarely seen. I have only found one copy which I show on the cover of this issue. It is listed as Harrison Figure 9 so we know it is constant since obviously Harrison has found a copy. Harrison goes on to say that the scratch has only been seen in stamps of the Emerald Green Shade and suspects that it is very rare. The Plate Position is Unknown.



OTTAWA'S NATIONAL STAMP EXHIBITION  
EXPOSITION PHILATÉLIQUE NATIONALE D'OTTAWA

**r. maresch & son**

DEALERS IN FINE STAMPS SINCE 1924  
8822 755-0107 www.maresch.com



CHRISTOPHERGREEN  
ESTD 1970

ROY'S STAMPS  
"Canada's Leading  
Stamp Show Dealer"



**SPARKS**  
AUCTIONS

CANADIAN  
STAMP NEWS

Show cards printed courtesy of Canadian Stamp News

# ORAPEX 2024

Ottawa's National Stamp Exhibition

61<sup>st</sup> Annual Exhibition and Bourse

Theme: "Marcophily / Postmarks"

APS World Series of Philately Show

Exhibit applications for all subjects welcome.

**Saturday, May 4th, 2024 - 10 a.m. to 6:00 p.m.**

**Sunday, May 5th, 2024 - 10 a.m. to 4:00 p.m.**

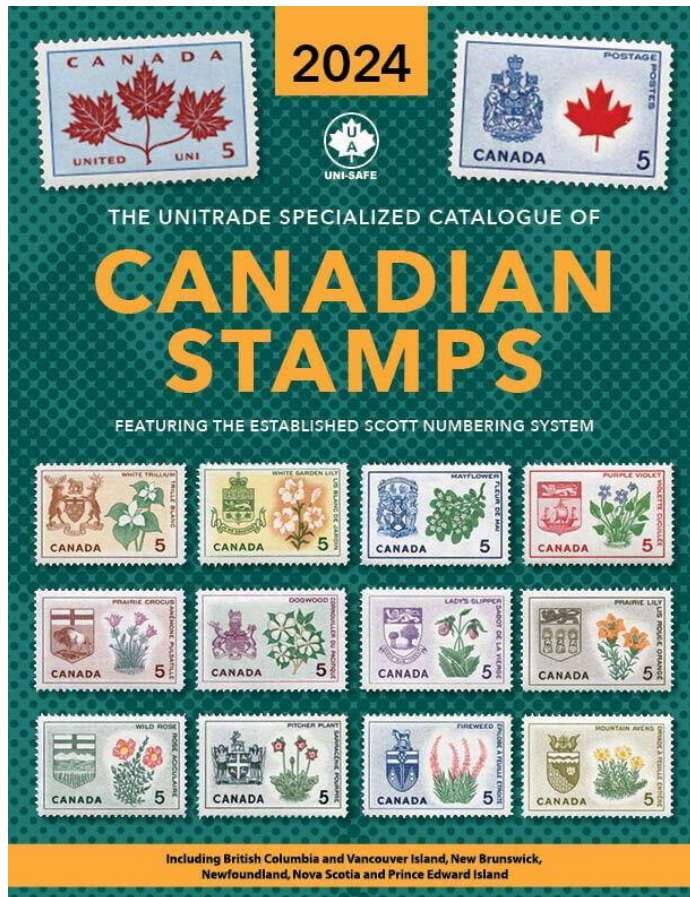
Free admission and parking

Nepean Sportsplex  
1701 Woodroffe Avenue  
Ottawa, Ontario K2G 1W2

[www.orapex.ca](http://www.orapex.ca)

[info@orapex.ca](mailto:info@orapex.ca)

## Unitrade Sale by Jim Jung



**Linn's Stamp News** reports that the owner of Unitrade Associates, Gino Casa, will retire in November 2024 and has decided to sell the Unitrade business. There is an announcement on the [Unitrade website](#) with reads in part:

**After more than 50 years in business, the owner of Unitrade Associates is retiring in November, 2024 and has put the business up for sale.**

**It has been our pleasure serving the stamp and coin collecting community throughout the years and hope that we have left an enduring legacy with our quality products and one-of-a-kind customer service.**

**Thank you for your patronage.**

[Read the complete Linn's Stamp News article here.](#)