

# Dots & Scratches

Re-entries and Constant Plate Varieties  
BNAPS Study Group



10c Library of  
Parliament with a  
Scratch thru UR Leaf



# Dots & Scratches

Re-entries and Constant Plate Varieties

BNAPS Study Group

November 2023, Volume 9, Number 4, Whole Number 32

## Table of Contents

My Two Cents .....	3
Thread on a Plate Error .....	5
by Jim Jung	
Fun with the Billig's Catalog .....	12
by Jim Jung	
John Cabot Major Re-entry .....	21
by Michael D. Smith	
Newfoundland Pictorial Issue Reentries .....	23
by Jim Jung with Images courtesy of Earl Noss and Andrew Hussey	
Rick Sheryer EFO's .....	30
by Jim Jung	
Unitrade Sale .....	33
by Jim Jung	

### **BNAPS Re-entries and Constant Plate Varieties Study Group**

This newsletter and previous issues are available as PDF files from the BNAPS website.

Please send submissions and feedback about the newsletter to the Editor – jimjung8@gmail.com.  
All other correspondence should be addressed to the Chairman, bsbvp88@hotmail.com

## My Two Cents

As the New Editor of Dots and Scratches, I wasn't sure of what to write about, but I just knew I had a lot of ideas in my head that had to get out. Of course, who knows if this is good or not. Let me know what you think.

I mostly put together this first issue myself but I am looking for collectors to send in scans of their nice items that they think would fit nicely into the theme of Re-entries, Plate Flaws or EFO's. We would be happy to publish your article or write up a nice article about your stamp(s), so please do contact me directly by email at [jimjung8@gmail.com](mailto:jimjung8@gmail.com).

Yohann, from Eastern Auctions tells me that there is a fabulous Sale in November. This is a Public Auction with No Reserve. The [Auction Sale flipbook](#) has been released, and when I looked through it, I see Worldwide, Provinces and Early Canada high value rarities up for grabs. The Large Queen Postal History is especially nice, with a Very Rare Military Concessionary letter franked with a 2c Large Queen. I also see a good collection of Essays and Die Proofs. How about a Mint Block of 10 of the St Lawrence Seaway Inverted Center! Too much? There's also a Mint Block of Four.

Check out the Maresch Sale for some great items. Read my article on Page 30.

Jim Jung

# DEVENEY STAMPS LTD.

ESTD 1977

Specializing in Canadian Varieties & Re-entries



Featuring high resolution images

ONE OF CANADA'S LARGEST ONLINE STAMP INVENTORIES

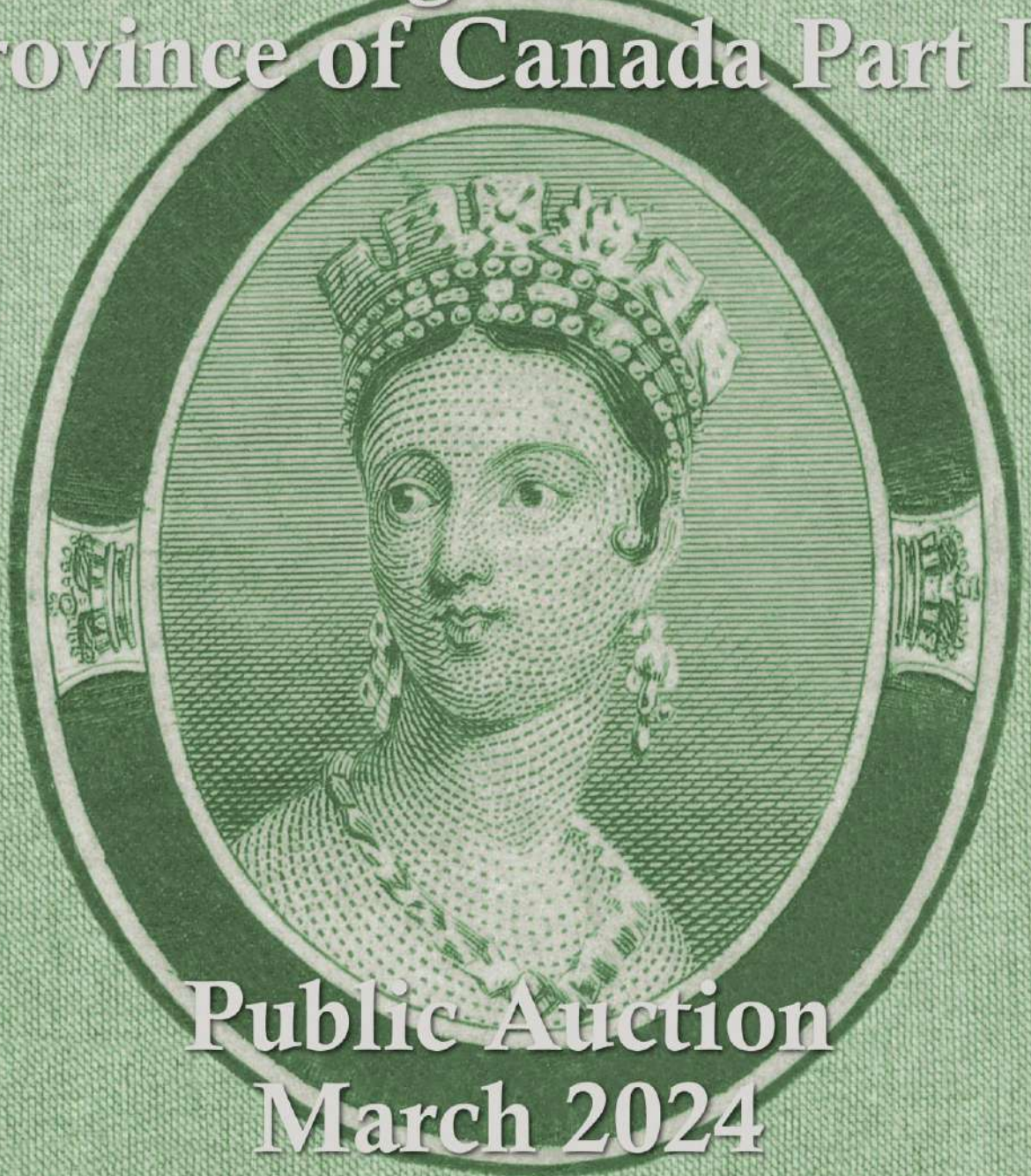
[WWW.DEVENEYSTAMPS.COM](http://WWW.DEVENEYSTAMPS.COM)

TOLL FREE: 1-888-232-0282



[info@deveneystamps.com](mailto:info@deveneystamps.com)

# The Brigham Estate Province of Canada Part III



Public Auction  
March 2024



**Eastern Auctions Ltd.**

P.O. Box 250 - Bathurst - New Brunswick - E2A 3Z2 - Canada

Tel: 1(506) 548-8986 / Fax: 1(506) 546-6627

Toll Free Tel: 1(800) 667-8267 / Fax: 1(888) 867-8267

Email: [contact@easternauctions.com](mailto:contact@easternauctions.com) / Website: [www.easternauctions.com](http://www.easternauctions.com)



## Thread on a Plate Error by Jim Jung



These strange looking ink marks can be found on any stamps but become more common during the Admiral Issue. This 2c Confederation Issue stamp has the marks in the upper left through the 7 in 1867 and at the lower left through the left 2. I've not seen two of these that are the same and you shouldn't.

After the sheet is printed and removed from the press, the plate is wiped down using a rag or cloth to get ready for the next sheet.

Sometimes, a tiny thread will fall off the rag and stick on the plate. So when the next sheet is printed, this strange mark is printed on the sheet using that tiny thread. Although these are not Constant Plate Varieties, I find them fascinating because they look so strange. I would definitely qualify them as being EFO's. I've added a bunch on the following pages for you to see. If you're a flyspecker, I'm sure you'll find one of these and now you have an explanation for it.

Thread on a Plate Error by Jim Jung  
2c Confederation



**Thread on a Plate Error by Jim Jung**

**12c Confederation**



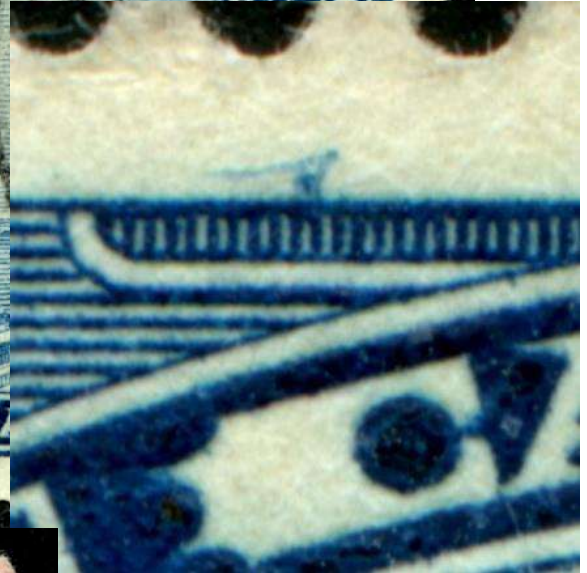
12c Confederation



**10c Mountie**

Thread on a Plate Error by Jim Jung

\$1 Champlain



2c Arch Issue  
Red Shade



Thread on a Plate Error by Jim Jung



2c Arch Issue  
Green Shade



3c Mufti

Thread on a Plate Error by Jim Jung



4c Admiral



10c Brown  
Admiral



Thread on a Plate Error by Jim Jung

6c Excise Tax

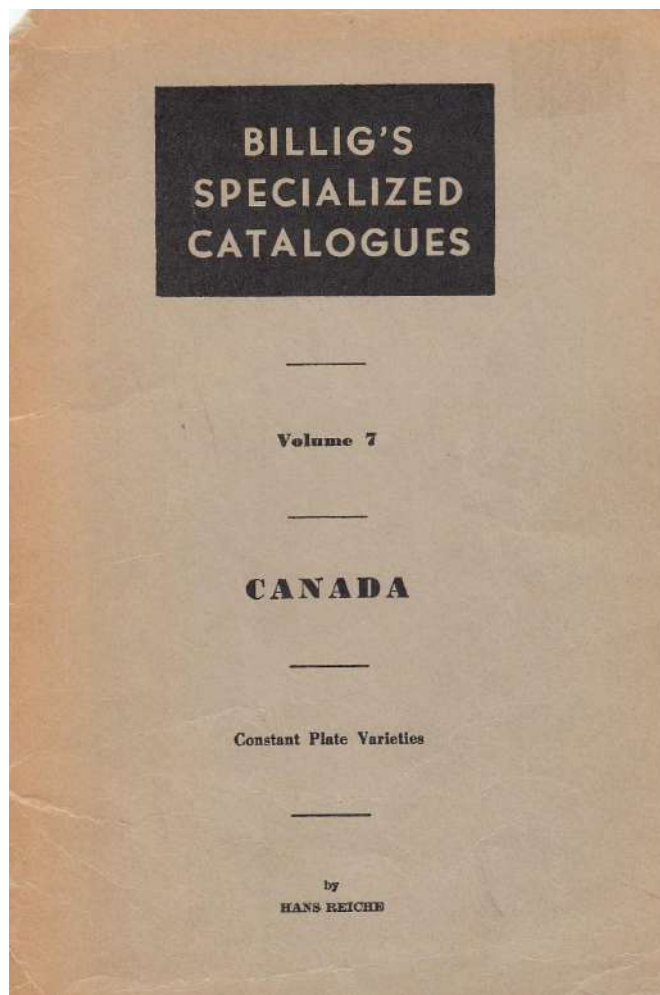


2c Green Admiral

## Fun with the Billig's Catalog by Jim Jung

When you hear the name Hans Reiche, lovers of Constant Plate Varieties will perk up to look and listen to what you have to say. Certainly Hans Reiche has delivered books on Small Queens (*Constant Plate Varieties of the Canada Small Queens by Reiche and Sendbuehler*), Large Queens (*A Large Queens Report*) and *Steel Engraved Constant Plate Varieties* which lists CPV's from the 3d Beaver all the way to 1978-79.

This little book called *Billig's Specialized Catalogues* lists in detail varieties of each stamp with a description of the dot, hairline, scratch, etc, and the Plate Position for stamps after the Admiral Issue. This book is for the real Flyspecker.



	<b>1 Cent, deep green</b>
163—DIE 1	
— 1	major re-entry
— 2	re-touched re-entry
— 3	dot in -A- Canada
— 4	streak left side of right -1-
— 5	dot in -N- Cents
—13	dot in right -1-
—14	dot top margin right
—15	dot top margin and D Canada
—16	dash top of King's head

Billig's #3 – pp8 PI 1 UR Dot in A of CANADA

No. 96, Pl. 2 UL	3.50
	3.50
No. 8, Pl. 1 UR	0.10
No. 11, Pl. 1 UR	0.10
No. 42, Pl. 1 UR	0.10
No. 12, Pl. 2 UR	0.10
No. 19, Pl. 2 UR	0.10
No. 60, Pl. 2 UR	0.10
No. 92, Pl. 2 UR	0.10

## Fun with the Billig's Catalog by Jim Jung



Billig's #15 – pp60 Pl 2 UR Dot in Top margin and D of CANADA



Some nice things about this book is there are many small flaws listed like dots, hairlines, odd marks described for each stamp. This tells you which stamp has a lot of flaws, and therefore, which stamps are worth checking to find flaws. A nice touch is the addition of the

plate position and sheet where the flaw is found. With this information, you can try to buy specific sheets that have more flaws to enjoy. There are no drawings of the flaws, which may make it more difficult to be sure you have a match, but I have found some that good candidates for a match. I used the wonderful Arch Issue, which has a plethora of flaws to find, especially in the lower values.



However, when you look at this book, it lists a lot more flaws for the 1c Green compared to the 1c Yellow. The 2c is also a good one, as well as the 5c, while there are only a few flaws on the 3c and not much more in the other values.



Billigs #1 Extended Moustache

## Fun with the Billig's Catalog by Jim Jung

— 1	extended moustache	No. 65, Pl. 8 LR	1.75
— 2	flaw in -N- of Canada	No. 83, Pl. 8 LL	0.10
— 3	dot in -N- of Cents	No. 96, Pl. 8 UL	0.10
— 4	dot above -E- of Cents	No. 35, Pl. 7 LL	0.10
— 5	dot left -2-	No. 36, Pl. 7 UL	0.10
— 6	dot right -2-	No. 60, Pl. 7 UL	0.10
— 7	dot right margin	No. 30, Pl. 7 UR	0.10
— 8	dots top margin right	No. 6, Pl. 7 LL	0.10
— 9	dot first -A-, Canada	No. 56, Pl. 7 LL	0.10
— 10	dot in -T-, Cents	No. 79, Pl. 7 LR	0.10
— 11	dots bottom margin	No. 83, Pl. 7 LR	0.10
— 12	dots in -C- and -D-, Canada	No. 1, Pl. 8 UR	0.10
— 13	hairline at bottom	No. 96, 98, Pl. 8 LR	0.10
— 14	hairline in selvedge above stamp	No. 5, Pl. 7 UL	0.10
— 15	hairline above stamp	No. 8, 10, Pl. 7 UR	0.10
— 16	hairline left -2-	No. 91, Pl. 7 LL	0.10
— 17	hairline left margin	No. 2, Pl. 8 UR	0.10
— 18	fine dot second -A-, Canada	No. 29, Pl. 7 UL	0.10
— 19	fine dot -N-, Canada	No. 12, Pl. 7 LR	0.10
— 20	faint dot first -A-, Canada and top margin		



I've highlighted the ones listed above on the 2c Arch Issue where I have found a flaw that appears to be a good match. For #16, I found two candidates which may be a match. Both of them look like they could be the right one. The only way to be sure is to get a sheet or scan of a sheet to check. It's still nice to collect these flaws on the Arch Issue.



Billigs #3 Dot in N of CENTS

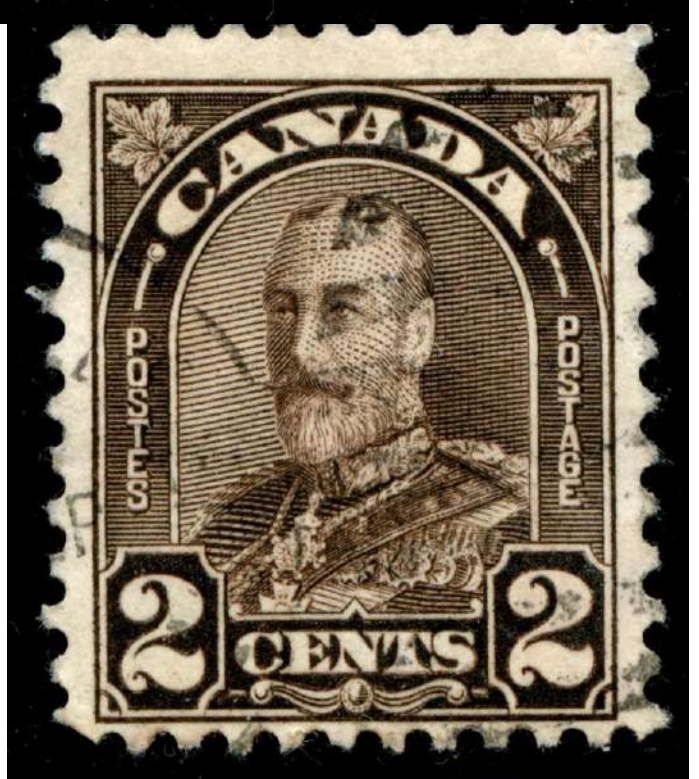
# Fun with the Billig's Catalog by Jim Jung



Billigs #7 Dot right margin



Billigs #10 Dot T of CENTS



Fun with the Billig's Catalog by Jim Jung



Billigs #16 hairline left 2



Billigs #16 hairline left 2



## Fun with the Billig's Catalog by Jim Jung

I've also added a couple from the Mufti Issue on the last page of this article, another popular stamp for flaws. There are a number of stamps we could focus on. After you look thru this small catalog, you may be surprised at how many flaws there are in these mid 19<sup>th</sup> century King George V and VI stamps from Canada. They are becoming popular as I have seen collectors look for these. I have seen these on eBay as well as in group variety lots at auction.



If you are looking to expand your collection of variety stamps, this is a great little book to get. It will open your eyes up to a whole new range of possibilities.



Billigs #19 Dot N of CANADA

	<b>2 Cents, dull green</b>
164— 1	line in right -2-
— 2	line through right -2-
— 3	line in -S- of Cents
— 4	dot in -C- and right -2-
— 5	dot in bottom of right -2-
— 6	dot in right -2-
— 7	dot in left -2-
— 8	dot in tail of right -2-
— 9	dot in last -A- of Canada
—10	dot left margin

No. 1, Pl. 3	UL	0.10
No. 59, Pl. 6	LR	0.10
No. 27, 37, Pl. 6	LR	0.10
No. 27, 37, Pl. 5	LL	0.10
No. 28, Pl. 6	LR	0.10
No. 65, Pl. 4	UR	0.10
No. 86, Pl. 3	UR	0.10
No. 29, 33, Pl. 3	LR	0.10
No. 16, Pl. 6	LL	0.10
No. 53, Pl. 4	UL	0.10
No. 96, Pl. 6	UL	0.10
No. 45, Pl. 3	LR	0.10
No. 83, Pl. 4	LL	0.10
No. 92, Pl. 6	LR	0.10
No. 13, Pl. 6	LR	0.10
No. 85, Pl. 6	LR	0.10
No. 10, Pl. 3	LR	0.10
No. 81, Pl. 6	LR	0.10

Fun with the Billig's Catalog by Jim Jung



Billigs #2 Line thru right 2



Billigs #9 Dot last A of CANADA

## Fun with the Billig's Catalog by Jim Jung

		<b>5 Cents, dull blue</b>		
170—	1	defective inner frame line, left of Postage		
			No. 98, Pl. 3 UR	0.45
—	2	dot in left 5	No. 30, Pl. 3 LL	0.15
—	3	dot right -5-	No. 59, Pl. 3 LR	0.15
—	4	dot in -N-, Canada	No. 70, Pl. 3 LR	0.15
—	5	dot bottom margin left	No. 76, Pl. 3 LR	0.15
—	6	hairline below stamps	No. 98, 99, 100, Pl. 3 LL	0.15
—	7	hairlines from top or bottom left or right corners		
			No. 62, 77, 78, 88, 89, 87, 90 Pl. 3 LR	0.15
—	8	Milky blue		0.15



Billigs #5 Dot LL Margin

Billigs #7 hairlines UR LR



## Fun with the Billig's Catalog by Jim Jung



Billig's #1 pp25  
PI 2 LL Accent  
above N of  
CENTS

Billig's #48 pp99 PI 2 UL  
small crescent right "3".  
There's an obvious typo  
in the description with  
the "5" instead of a "3".



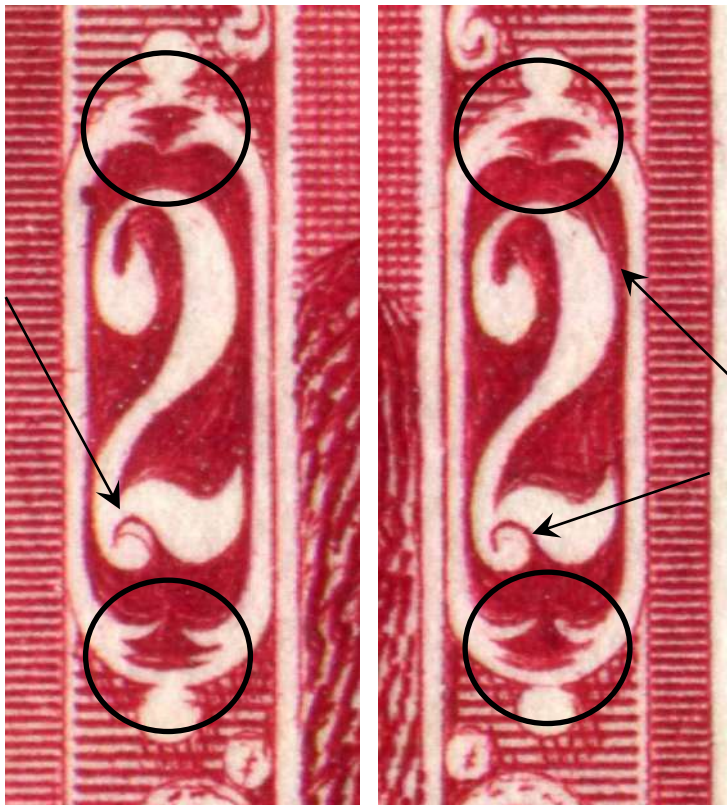
<b>3 Cents, carmine</b>					
233— 1	accent in oval over -N- Cents	No. 25,	Pl. 2 LL	0.15	
— 2	broken -3-	No. 10,	Pl. 8 LL	0.15	
— 3	colour dot above -N-, Canada, margin	No. 98,	Pl. 6 LL	0.15	
— 4	colour dash right margin	No. 17,	Pl. 2 LL	0.15	
— 5	colour dash top margin	No. 10,	Pl. 2 LR	0.15	
— 6	cracked top	No. 18,	Pl. 2 UR	0.75	
— 43	line in selvage at right	No. 20,	Pl. 3 LR	0.15	
— 46	marks in -P-, Postes	No. 91,	Pl. 1 UL	0.15	
— 47	retouched frame line	No. 19,	Pl. 1 LR	0.25	
— 48	small crescent right -5-	No. 99,	Pl. 2 UL	0.15	
— 49	two dots right margin	No. 38,	Pl. 6 LL	0.15	
— 50	worn plate left of left -3-	No. 69,	Pl. 1 UR	0.15	

**5 Cents, blue**

# John Cabot Major Re-entry by Michael D. Smith



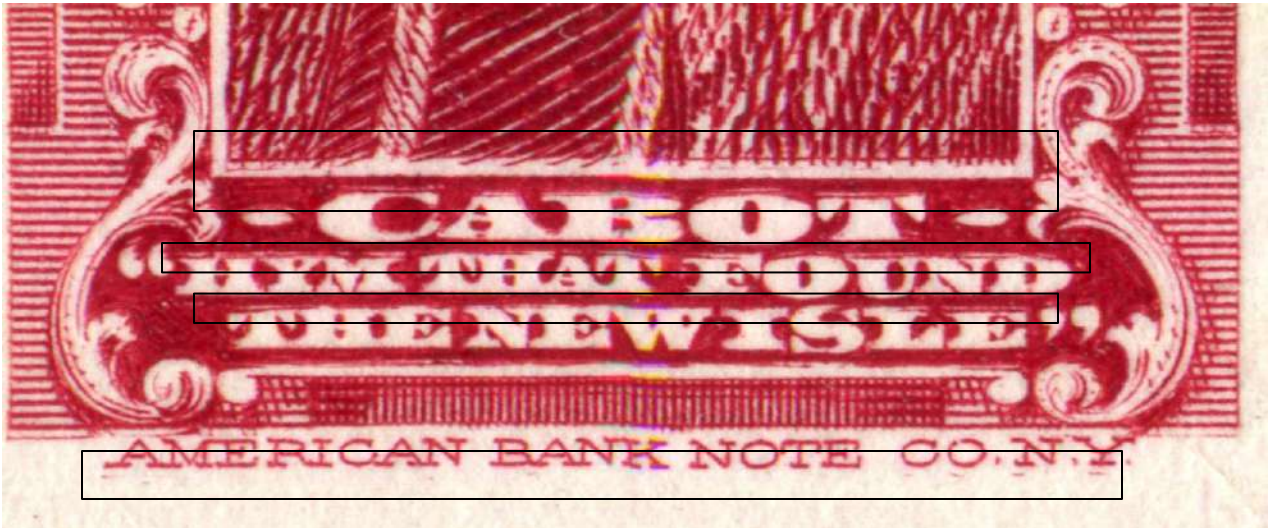
Scott 62P and 62Pii. Proof Pair, Positions 75 and 76, the latter is the major re-entry.



This 2c stamp is from the 1897 **Discovery of Newfoundland** Issue. Newfoundland stamps, as a whole, constitute a plethora of Re-entries, Misplaced Entries and startling EFO's. Let's take a look at this one.

Key features of this nice re-entry are found in the two value tablets of the 2's (shown at left). There is doubling above and below as well as in the 2's (most noticeable in the left 2).

## John Cabot Major Re-entry by Michael D. Smith



The doubling at the bottom tablet of the design and diagonal lines at bottom of portrait are quite noticeable. The tops of the letters in CABOT "HYM THAT FOUND THE NEW ISLE" have an extra line. There is also small marks of doubling below "AMERICAN BANK NOTE CO. N. Y."

Ralph Trimble states on Re-entries.com that it is the only re-entry on the sheet he examined.



Newfoundland Pictorial Issue Reentries by Jim Jung  
Images courtesy of Earl Noss and Andrew Hussey



This is Scott 147, not to be confused with the re-engraved Reddish Brown stamp Scott 165. It's very common and catalogs for 45c. I've seen these in bulk and this stamp is full of re-entries that are difficult to see but reside in many positions, many that are unknown to me at this time. Earl Noss has found a few different ones, and it's clear that more exist. This is a good stamp to search for reentries and fits a good flyspecking session, if you can find examples, possibly the next time you go to a Stamp Show. Cheap to buy and many to be found, this qualifies it as a stamp you should check out.



Position 80 - Notice the nice doubling in the letters in CENTS. The extensive reentry marks in the upper right numeral box, the scroll and pedestal below the numeral box and the top of the crown is shown on the next page.

## Newfoundland Pictorial Issue Reentries by Jim Jung Images courtesy of Earl Noss and Andrew Hussey



This is from the position 80 stamp shown on the previous page. There are reentry marks throughout this image of the top right of the stamp. The top right of the numeral box as well as the bottom frame of the numeral box, the inner frames, the 3 itself and the scroll and pedestal beneath the numeral box. The crown shows obvious doubling at the top center, the round pearls that arc across the top and the inner lines.



**DEVENEY STAMPS** LTD.

ESTD 1977

Specializing in Canadian Varieties & Re-entries



Featuring high resolution images

ONE OF CANADA'S LARGEST ONLINE STAMP INVENTORIES

**WWW.DEVENEYSTAMPS.COM**

TOLL FREE: 1-888-232-0282



info@deveneystamps.com



Newfoundland Pictorial Issue Reentries by Jim Jung  
Images courtesy of Earl Noss and Andrew Hussey



This is a 2<sup>nd</sup> copy of the pp80  
Reentry

## Newfoundland Pictorial Issue Reentries by Jim Jung Images courtesy of Earl Noss and Andrew Hussey



Andrew Hussey gave us this image of a nice lower right corner block of 8 of this stamp. Reentry marks are circled in green showing three positions that have reentries, just in this block. Having the lower selvage is a bonus with that nice lathework across the bottom of the sheet.

Newfoundland Pictorial Issue Reentries by Jim Jung  
Images courtesy of Earl Noss and Andrew Hussey



Here is one that has the re-entry in the upper left side. You can see the doubling throughout the inner and outer framelines of the numeral box as well as the 3 itself. There are some marks in the scrolls beneath the numeral box, too.

Newfoundland Pictorial Issue Reentries by Jim Jung  
Images courtesy of Earl Noss and Andrew Hussey



This Reentry is in the upper left numeral box but looks slightly different than the one above. The reentry lines are not as strong and are not in the same places as the one above. It's possible that this could be a different state of the reentry above but it looks like a completely different position.

Newfoundland Pictorial Issue Reentries by Jim Jung  
Images courtesy of Earl Noss and Andrew Hussey



The big draw on this one is a big scratch through the upper left numeral box that stretches down through Queen Mary's hair.



## Rick Sheryer EFO's by Jim Jung

Beyond looking for Dot and Scratches is the strange world of EFO's. Errors, Freaks and Oddities are stamps that have radical errors caused during the production of the stamps. These stamps have dramatic errors, and although "ugly", seem to have a certain fascination about them. I have been drawn to them ever since the St. Lawrence Seaway stamps was found with the Inverted Center. Many collectors look for these errors in stamps, hoping to cash in on a fortune. The same desire in hunting for Re-entries and Plate Flaws is also present in those hunting for these errors.



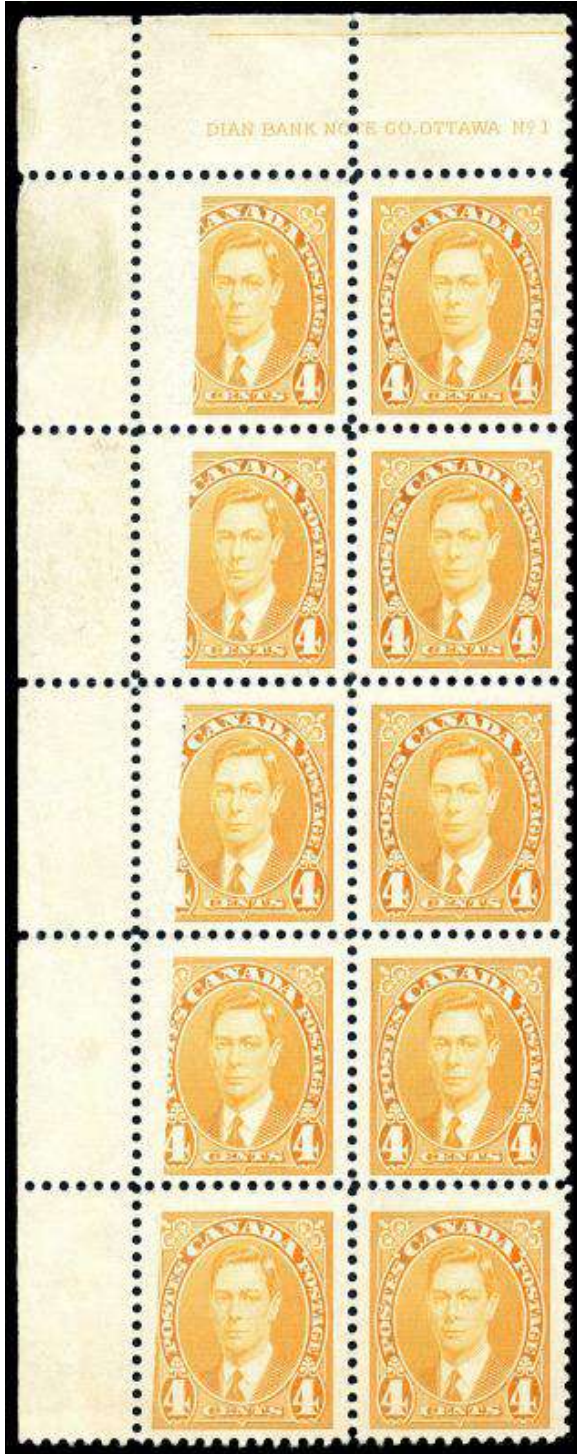
ONE CENT: YELLOW, single (and half of the next stamp at right) showing a dramatic diagonal 5½mm wide PRE-PRINTING PAPER FOLDOVER, unfolded after use so the fold splits the cds cancels, clipped perfs at top, spectacular

1951 Poste-Postage 2¢ olive green, UL CANADIAN BANK NOTE CO. LIMITED inscription strip of three, a piece of paper had fallen on sheet pre printing leaving a spectacular ALBINO strip, small strip included, striking



## Rick Sheryer EFO's by Jim Jung

Rick Sheryer was one of those collectors who found EFO's fascinating. He accumulated a large collection of these which I have viewed while visiting Peter Maresch at their offices in Aurora. It is quite the collection, and now that Rick has passed away, his estate is selling these wonderful items, with a small batch listed in each Maresch Sale, in an ongoing effort to sell the entire collection.



TWO CENT: GREEN, upper left corner margin copy showing partial COUNTER, (Plate No.) A with DRAMATIC DOUBLE MISPERF, trimmed at right side, still striking. 2006 Greene Cert.

4¢ orange, UL Plate No. 1 block of 10 with PORTION OF DESIGN MISSING at left of entire left row, apparently from another sheet of paper being placed on top, a few bends, small stain and small crease in margin only, otherwise nh, very fine.

## Rick Sheryer EFO's by Jim Jung



THREE CENT:  
BRIGHT VERMILION,  
mint top left corner  
margin 'COUNTER'  
pair (shaded letters)  
with DOUBLE  
VERTICAL  
PERFORATIONS  
through both stamps  
and again in left  
margin (blind  
perforations), angling  
off to the left at the top  
due to a pre-  
perforating corner fold-  
over, og, with hinge  
remnants/supports left  
stamp nh, striking

\$2 Quebec City  
MISSING 'postes /  
postage \$2' and  
Canada, nh, very  
fine. copy of 1987  
Greene Cert for  
block of 40 with old  
Scott #

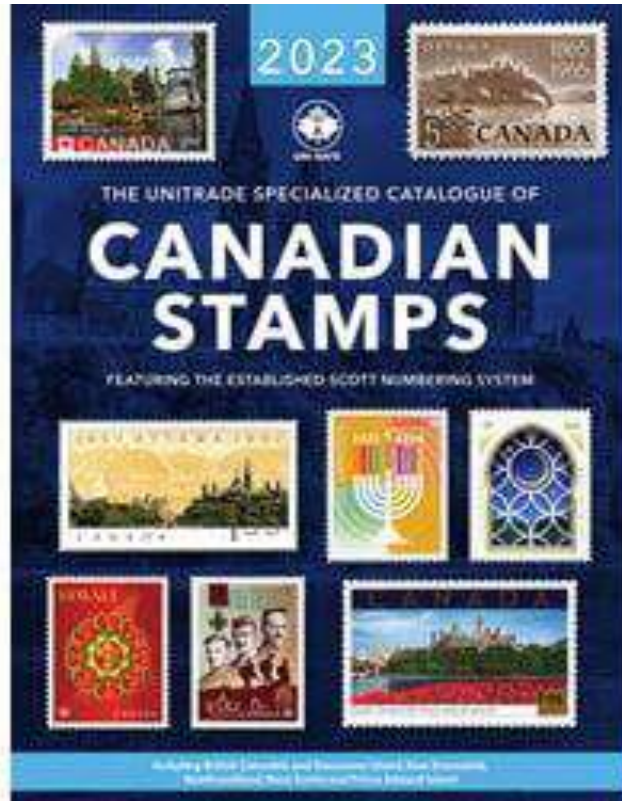


I had been going to the Maresch Auction Sales for decades , and started, when Bill was holding the Sales down at the Yonge Street Offices in North York. I found that this was where the Dealers were going to buy their stock, so why not buy here and cut out the middle man.

Rick was the expert for the Auctionhouse and every time I talked to him I would learn something. He knew so much and understood what collectors wanted to buy. Each time I see another Maresch Sale, I am amazed at seeing these fabulous items of Rick's being sold. The next auction is coming up so why not take a look. [Visit Maresch.com](http://VisitMaresch.com)



## Unitrade Sale by Jim Jung



**Linn's Stamp News** reports that the owner of Unitrade Associates, Gino Casa, will retire in November 2024 and has decided to sell the Unitrade business. There is an announcement on the [Unitrade website](#) with reads in part:

**After more than 50 years in business, the owner of Unitrade Associates is retiring in November, 2024 and has put the business up for sale.**

**It has been our pleasure serving the stamp and coin collecting community throughout the years and hope that we have left an enduring legacy with our quality products and one-of-a-kind customer service.**

**Thank you for your patronage.**

[Read the complete Linn's Stamp News article here.](#)