

NEWSLETTER

CANADIAN RE-ENTRY STUDY GROUP

Spring is late on the prairies this year. Today, May 9/04, I was driving down the street and a fellow had his sprinkler on. A tree in his front yard was covered in ice!

Marie and I spent another 5 weeks in Victoria this past winter and had a good time as usual. The Newsletter is a few weeks late, just not enough hours in the day to do everything that has to be done.

NEWFOUNDLAND C.S. Long Coronation Issue May 12, 1937



Figure 1

The upper right stamp in Figure 1 is quite nicely re-entered. The date 12th May 1937 is re-entered, the King's crown shows signs of re-entry as do the shade lines on the King's face - Figure 2.

Figure 3 shows lines of re-entry through 'Newfoundland Dog' and in the portrait of the dog. The 'W' in Newfoundland is also re-entered as is the 'U' in 'FOURTEEN'.

VOLUME 22 NUMBER 1 JAN - FEB - MAR 2004 WHOLE NUMBER 95

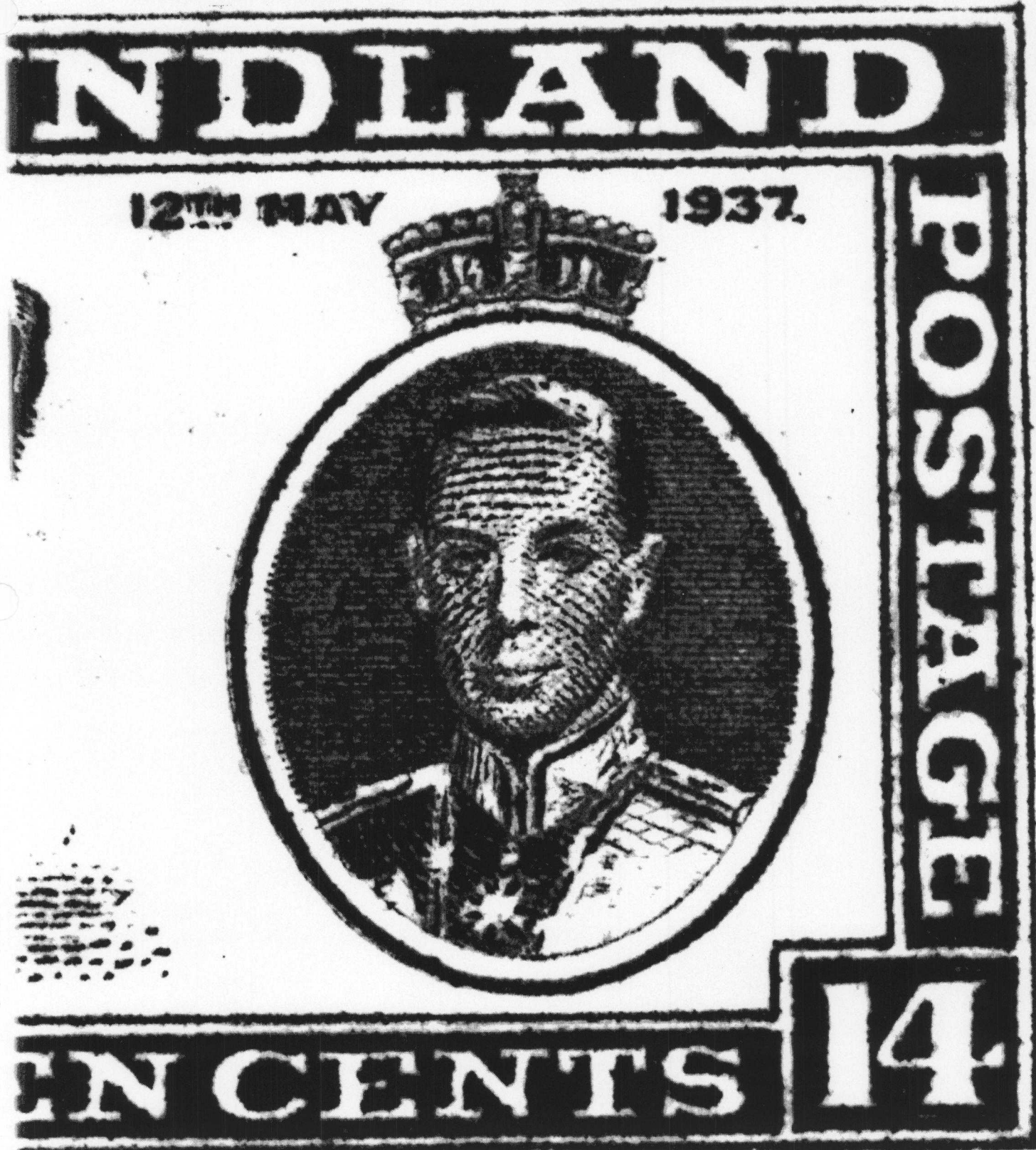


Figure 2

A STUDY GROUP OF THE BRITISH NORTH AMERICAN PHILATELIC SOCIETY 2

VOLUME 22 NUMBER 1 JAN - FEB - MAR 2004 WHOLE NUMBER 95

NEWFOU

POSTAGE

NEWFOUNDLAND
DOG



14

FOURTEEN

Figure 3

A STUDY GROUP OF THE BRITISH NORTH AMERICAN PHILATELIC SOCIETY 3

VOLUME 22 NUMBER 1 JAN - FEB - MAR 2004 WHOLE NUMBER 95

1903 - 1908 KING EDWARD VII ISSUE

Recessed printed by the American Bank Note Co. Ottawa in sheets of 200
in two panes of 100 or 400 in four panes of 100 (Plates 53 to 86)

ONE CENT GREEN C.S. #89

1,470,000,000 Issued

Major Re-entry - Position Unknown

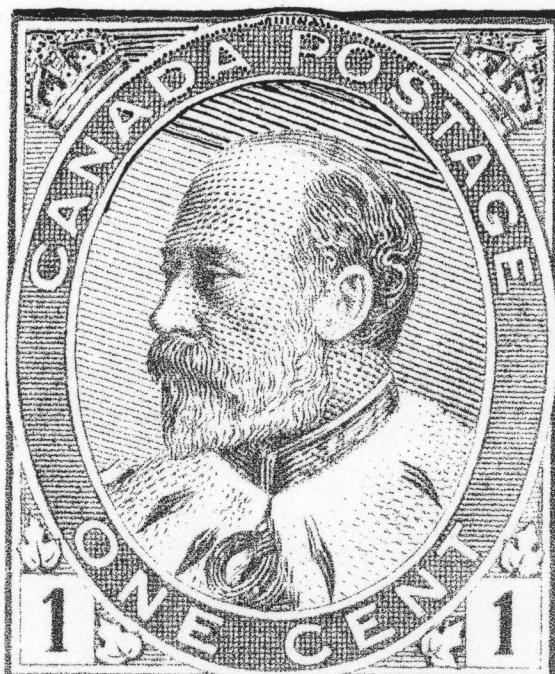


Figure 4

Here is a nice strong re-entry along the top of the one cent Edward. The top frame line is doubled all across the top. The right and left crowns and shade lines around them are re-entered. The top of the portrait oval is doubled. The letters 'A, D, A, P, O, S' in 'CANADA POSTAGE' show signs of re-entry. Finally, the inside line of the oval is doubled along the top, as are shade lines above the King's head.

NEWFOUNDLAND

1865 DECIMAL CURRENCY ISSUE

The New York Printings - 1865 - 1879

Recess-printed by The National Bank Note Co., New York in Sheets of 100-10x10

THREE CENT BLUE

(Number Issued Unknown - Rouletted)

C.S. No. 39

Re-Entry Position Unknown

A STUDY GROUP OF THE BRITISH NORTH AMERICAN PHILATELIC SOCIETY 4

VOLUME 22 NUMBER 1 JAN - FEB - MAR 2004 WHOLE NUMBER 95

The following three re-entries are on Newfoundland C.S. #39.

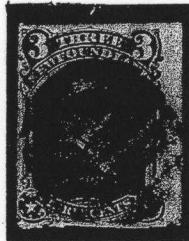


Figure 5

This stamp is re-entered along the top of the letters in 'Three' and the 'C' of 'CENTS'. The left star shows signs of re-entry and the scroll work along the bottom from the left side to the centre of the stamp.



Figure 6 - Re-entry Position Unknown

Both the top and bottom of this stamp are re-entered. There is a small line of re-entry in the top margin at the centre of the stamp. The frame line above 'Three' is doubled. All the letters of the top 'Three' are re-entered along the bottom. The right '3' is re-entered as is the scroll work to the right of the right '3'.

The frame line above the letters 'OUNDLAND' of 'NEW FOUNDLAND' is doubled. The letters 'NDLAND' are re-entered along the bottom of each letter. Along the bottom of the stamp shade lines of the Queen's crown are re-entered and extend into the frame line.

All the letters of 'Three' are re-entered at the top. The borrom frame under 'Three' is doubled as is the left star. The scroll work along the bottom of the stamp is doubled.



Figure 7 - Re-entry Position Unknown

The re-entries here are along the top and bottom areas of the stamp. The left and right threes are re-entered as are the 'H, R, E, E,' in 'Three'. The scroll to the right of the right three also shows signs of re-entry.

At the bottom of the stamp, the letters 'HREE CENT' are all re-entered at the top. The right star shows signs of re-entry and the scroll work from under the 'T' of 'Three' to under the 'E' of 'CENTS' is doubled.

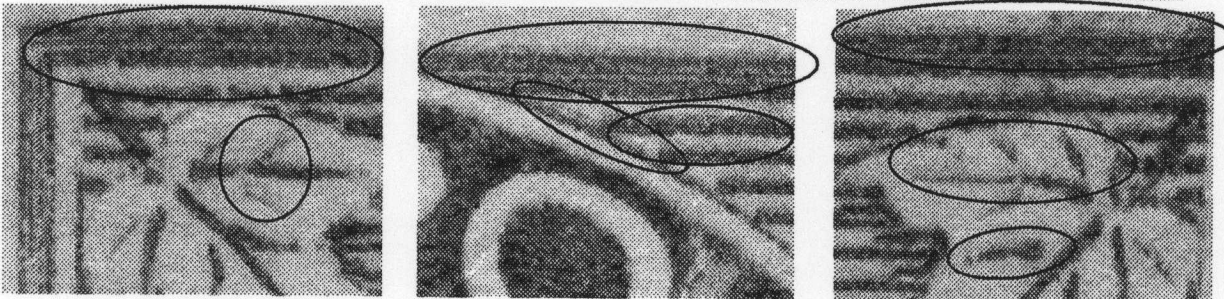
VOLUME 22 NUMBER 1 JAN - FEB - MAR 2004 WHOLE NUMBER 95

The following article was sent to us by Harry Voss. Thanks Harry!

NUMERAL ISSUE



FIVE CENT



Here is a minor re-entry on the blue five cent numeral with doubling at the top. I have found very few nice re-entries on this stamp except for the misplaced re-entries but these have been shown by Ralph Trimble in the News Letter Jan, Feb. 1993 Vol. 12 #1 whole #58.

VOLUME 22 NUMBER 1 JAN - FEB - MAR 2004 WHOLE NUMBER 95

CANADA F2 DARK GREEN

There are times when we find what if first thought to be a re-entry but on closer examination turns out to be a double print. Such is the case on this stamp. Although the black and white image does not do this stamp justice, you can see the exceptionally strong doubling of the upper right corner of the design and on first glance it could be taken for a re-entry. Thanks to the Saskatoon Stamp Centre for letting us use this spectacular stamp in our Newsletter.



Figure 8

All correspondence should be sent to:

Hal Kellett
231 Briarvale Bay
Saskatoon, Sk.
S7V 1B8

Ph. 306 - 374 - 4282
e-mail -hkstampsandcovers@shaw.ca

Dues, address changes to:

John Jamieson
Box 1870
Saskatoon, Sk.
S7K 3S2

Ph. 306 - 931 - 6633
Fax: 306 - 975 - 3728
e-mail - ssc.john@saskatoonstamp.com