

VOLUME 21 NUMBER 2 APR – MAY – JUNE WHOLE NUMBER 92

NEWSLETTER

CANADIAN RE-ENTRY STUDY GROUP

Greetings from the grasshopper capital of the world! Marie and I have been busy in our yard this hot, dry summer trying to save our garden from the hoards of 'hoppers' that are about. Thank goodness they don't bite!

One of our members is putting together a catalogue of new re-entry discoveries on the Small Queens of Canada. More about this later in the Newsletter.

King George V 'Admiral' Issue 1911 – 1925
Canada Specialized Catalogue 104vii – blue green, major re-entry PI-12 LR, position 35



Figure 1

VOLUME 21 NUMBER 2 APR – MAY – JUNE WHOLE NUMBER 92

Here is a great looking copy of the one cent Admiral Major re-entry – precancelled! It is my understanding that this stamp was in a precancel collection for years before the re-entry was discovered.

1903 – 1908 King Edward V11 Issue

Recess-printed by the American Bank Note Co., Ottawa in sheets of 200 in two panes of 100 or 400 in four panes of 100 (Plates 53 – 86)

ONE CENT GREEN

Canadian Specialized Catalogue No. 89 (1,470,000,000 Issued)

Nice Re-Entry – Position unknown.

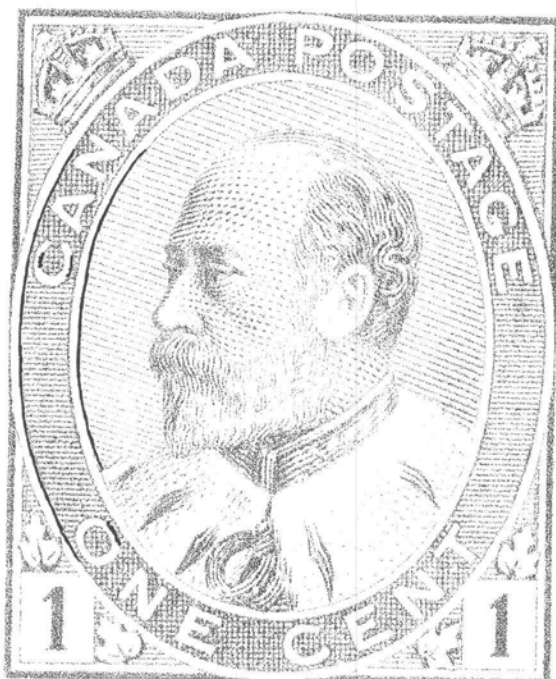


Figure 2

VOLUME 21 NUMBER 2 APR – MAY – JUNE WHOLE NUMBER 92

This stamp was in the collection of the late Bill MacDonald. He had five copies, including one dated Nov. 24/10, Vancouver, B.C.

The re-entries on this stamp are in the outside oval with a line running from the 'N' of 'CANADA' around to the 'O' of 'ONE'. There is also a line of re-entry at the top of the 'O' of 'ONE'. There are two small extra lines in the 'C' of 'CANADA'. The inside oval is re-entered from under the second 'A' of 'CANADA' down to the King's shoulder.

ONE CENT GREEN #89 – Position Unknown

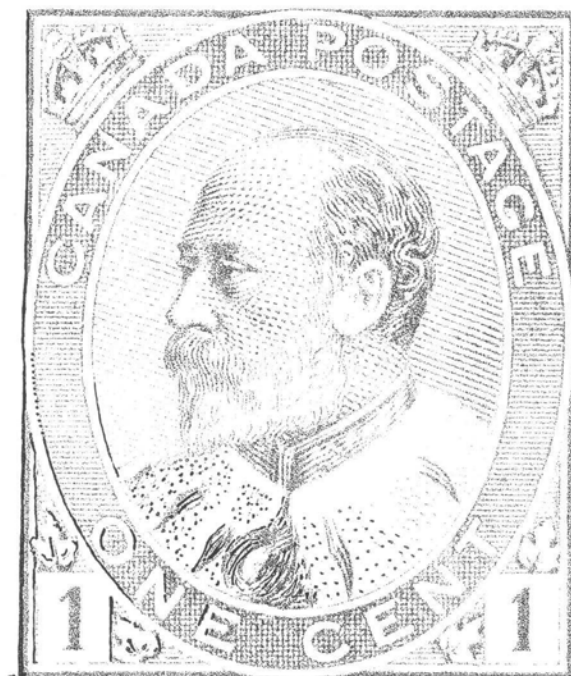


Figure 3

Figure 3 shows another nice re-entry, also from Bill's Collection. The outer left frame line is re-entered top to bottom. There is a dot in the margin just to the bottom left of the frame line. The left numeral box is re-entered with a line running on the left side of the numeral box from the bottom of the box up past the leaf to the oval. Both leaves around the left numeral are re-entered.

The outside oval is re-entered from a position even with the middle of the King's moustache and running around to the 'N' of 'ONE'. All three letters of 'ONE' are re-entered.

The inside oval is re-entered starting from a point even with the King's mouth and running down to the start of his right shoulder. The King's cape is dotted with re-entry from his right shoulder across three-quarters of the cape.

Bill says in his notes that the dot in the lower left corner may not be constant.

King Edward V11 Issue – FIVE CENT BLUE

Recess-Printed by the American Bank Note Company, Ottawa in sheets of 200 in two panes of 100 (66, 210,000 issued) Canadian Specialized Catalogue #91 Re-entry. Position Unknown.

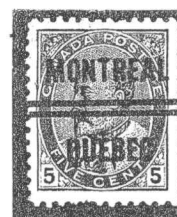


Figure 4

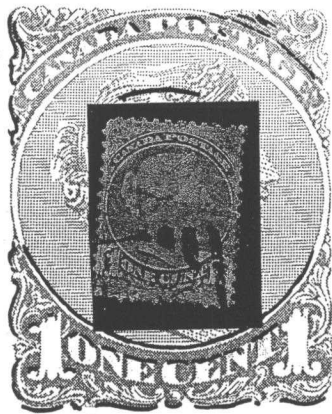
This nice twisted counter-clockwise re-entry is on another pre-cancelled stamp, again from Bill's collection. The outside left frame line is partially re-entered. Starting at the top, there is a line of re-entry running along the left frame line to about three quarters down the side of the crown.

There are three broken short lines along the left frame line from the bottom of the 'C' of 'CANADA' to a point even with the King's moustache. Then from a point across from the King's mouth the left frame line is doubled to the bottom frame line. The margin shows three short lines just above the left leaf.

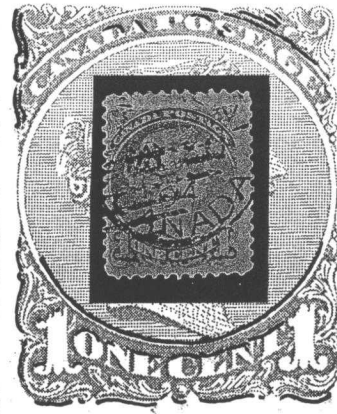
The outside oval has five small dots to the left of the King's beard. The 'E' of 'FIVE' and 'N' of 'CENTS' have some small lines inside the letters.

The bottom frame line is doubled all across the bottom of the stamp. The outside right frame line is doubled from top to bottom except where interrupted by the oval.

The next five Small Queens were sent to us by Ron Waldston. Thanks Ron.



"STRAND OF HAIR"
NEW! SHOULD BE ADDED
TO REICHE'S LIST



IDENTICAL, BUT
NO STRAND OF HAIR.

Figures 5 and 6



LOWER LEFT



LOWER LEFT + RIGHT



UPPER RIGHT

Figures 7, 8 and 9

Now a word about a new re-entry catalogue being written by Gerry Waldston. Gerry is cataloguing a fairly large number of Small Queen re-entries found by his son Ron. Ron has gone through thousands of Small Queens and has found many unrecorded re-entries. Gerry was good enough to send us a draft of his catalogue and it looks exciting. Gerry is going to put a value on each re-entry. He has asked that any member who has an unrecorded re-entry on a Small Queen and would like to contribute to his catalogue please contact Gerry at:

321 Betty Ann Drive, Toronto, Ont. M2R 1B4

Telephone 416 222 6767

E-mail: gwaldson@aol.com

Good luck with your venture Gerry.

NEWFOUNDLAND

1865 Decimal Currency Issue

The New York Printings – 1865 – 1879

Printed by the American Bank Note Co. , New York in Sheets of 100 – 10 x 10

FIVE CENT BLACK

(100,000 Issued – Perforated 12 x 12)

Canadian Specialized Catalogue #26

RE-ENTRY – Position 15





From Bill's collection. There are three dots in the 'F' of the top 'FIVE'. All letters except the 'N' of 'NEWFOUNDLAND' show signs of re-entry.

At the bottom of the stamp there is a line running through all of '5 FIVE CENTS 5' and into the margin. From Bill's notes - identified by three dots in 'F' of 'FIVE' and strong lines in 'EW' of 'NEWFOUNDLAND'. All re-entries found on the first printings in brown are to be found on subsequent printings in black and blue. The same plate was used for all three printings. Confirmed from the plate proof.

All Correspondence should be sent to:

Hal Kellett
231 Briarvale Bay
Saskatoon, Sask.
S7V 1B8

Ph. 306 - 374 - 4282
E-mail - hkstampsandcovers@shaw.ca

Dues and address changes to:

John Jamieson
Saskatoon Stamp Centre
Box 1870
Saskatoon, Sk.
S7K 3S2

Ph. 306 - 931 - 6633
Fax: 306 - 975 - 3728