

VOLUME 21 NUMBER 1 JAN - FEB - MAR 2003 WHOLE NUMBER 91

# NEWSLETTER

## CANADIAN RE-ENTRY STUDY GROUP

Discovery of Newfoundland  
June 24, 1897  
Colony Seal

This is a nice re-entry on the proof copy of the Newfoundland #72. The re-entries are on the left side of the proof. The bottom left scroll is re-entered as is the larger piece of scroll work above it. There is also a line of re-entry running up from the bottom left of the stamp to about three quarters of the way to the top.

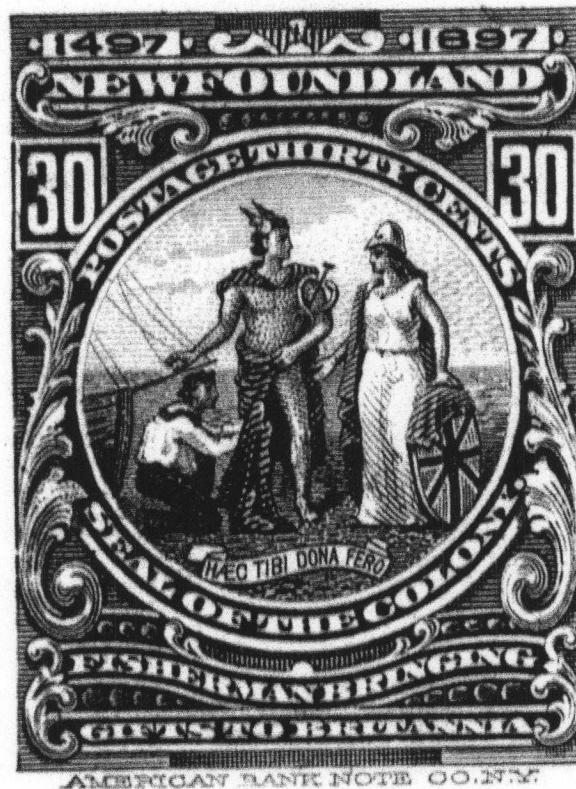


Figure 1



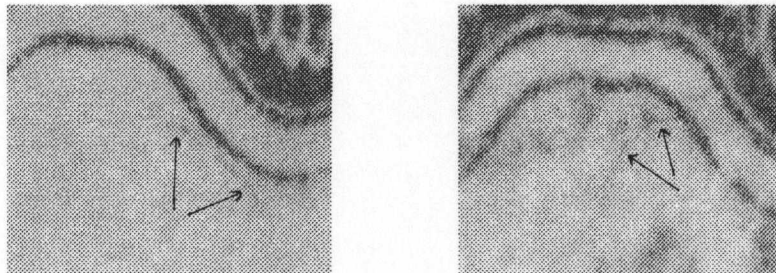
Figure 2  
A STUDY GROUP OF THE BRITISH NORTH AMERICAN PHILATELIC SOCIETY 2

**Five Cent Registered Letter Stamp CSC F2**

Thanks to Harry Voss for the next two articles.



Here is a nice misplaced entry on the 5c Registered Letter Stamp. The inking is a little light but it is a terrific entry, 1.5mm to the left and 3mm high. It seemed to be the outer curved frame lines, but it did not match. It turned out to be the inner line. The siderographer touched down the transfer roll under light pressure 3mm too high for the position below this stamp.



Enlarged X60

**Figure 3**

VOLUME 21 NUMBER 1 JAN - FEB - MAR 2003 WHOLE NUMBER 91

Queen Victoria Numeral Issue 1898 - 1902  
One Cent Numeral C S C #75



Major re-entry  
1898 Queen Victoria  
Position unknown  
Harry Voss

Figure 4  
A STUDY GROUP OF THE BRITISH NORTH AMERICAN PHILATELIC SOCIETY 4

**VOLUME 21 NUMBER 1 JAN - FEB - MAR 2003 WHOLE NUMBER 91**

Here is a stamp with major lines of re-entry starting at the upper left, the top frame line is doubled virtually all across the top of the stamp with a few short breaks.

The upper left and upper right maple leaves show doubling of the veins. The inside top frame line is doubled between the last 'A' of 'CANADA' and the 'P' of 'POSTAGE'.

The outside oval shows lines of re-entry from the 'C' of 'CANADA' around to the 'E' of 'POSTAGE'.

All the letters of 'CANADA POSTAGE' are re-entered, most quite strongly.

The Queen's tiara is re-entered.

The Queen's veil has lines of re-entry above the word 'CENT'. Her necklace is also re-entered.

The letters in 'ONE CENT' are all re-entered.

Both boxed '1's are re-entered as are the shade lines around the boxes.

The bottom frame line on the left side extends into the margin slightly and there are two lines running up from this line. One extends up just past the left box, the other about halfway up the box.

There is also a curved line of re-entry in the oval between the 'E' of 'ONE' and the 'C' of 'CENT'.

**Queen Victoria Numeral Issue 1898 - 1902**

**C S C # 79**

**Figure 5**

Here is a nice stamp showing lines of re-entry over the bottom third of the stamp. The bottom frame line is doubled all across the bottom of the stamp.

Both '5's' show a small amount of doubling. Shade lines around both '5's' are doubled.

The bottom area of the Queen's veil and her blouse are doubled.

Thanks to Ronny Waldston for this article.



Figure 5

VOLUME 21 NUMBER 1 JAN - FEB - MAR 2003 WHOLE NUMBER 91

Quebec Tercentenary Issue July 16, 1908

C S C # 103

Here is a re-entry on the twenty cent Quebec Tercentenary Issue that I believe has not been reported.

Ronny Waldston was good enough to send us this stamp to be examined and put in our newsletter.



Figure 6

The left frame line is doubled from the top of the stamp to just even with the bottom of the '2' in '20'. Also the scroll work around the '20' is doubled.

A STUDY GROUP OF THE BRITISH NORTH AMERICAN PHILATELIC SOCIETY 7

Quebec Tencentenary Issue

C S C #98



Figure 7

There is a nice little re-entry on the two cent Quebec Tercentenary Issue send to us by Ronny Waldston.

The frame lines between the 'Two Cents' Box and boxed '2' are all doubled. The 'C' in 'Quebec', the right '2' and the bottom of the lines enclosing the right '2' are doubled.



**VOLUME 21 NUMBER 1 JAN - FEB - MAR 2003 WHOLE NUMBER 91**

**All Correspondence should be sent to:**

Hal Kellett  
231 Briarvale Bay  
Saskatoon, Sk.  
S7V 1B8

E-mail - [hkstampsandcovers@shaw.ca](mailto:hkstampsandcovers@shaw.ca)

**Dues and address changes to:**

John Jamieson  
Saskatoon Stamp Centre  
Box 1870  
Saskatoon, Sk.  
S7K 3S2

Ph. 306 - 931 - 6633  
Fax: 306 - 975 - 3728