

VOLUME 20 NUMBER 3 JULY - AUG - SEPT 2002 WHOLE NUMBER 89

# NEWSLETTER

## CANADIAN RE-ENTRY STUDY GROUP

One of the new members of our Study Group, Ron Waldston, has been examining large quantities of small queens and has found some nice re-entries. Ron was good enough to send his 'finds' to us for publication in the Newsletter. Over the next four issues we will feature some of Ron's small queen re-entries, starting with the first four articles in this issue.

**Small Queen Issue 1870 - 1893**  
**Three Cent 1888 - 1897 Ottawa Printings**



**Figure 1**

This is a very strong re-entry covering probably half the surface of the stamp. The upper left and upper right scroll work are doubled. The bottom half of the Queen's crown is re-entered along with her hair below the crown. The forehead, eye, nose and chin all show signs of re-entry.

All shade lines running from the right side of the Queen's head are doubled from the head out to the oval. The inside oval line is re-entered from under the 'G' of POSTAGE running around to above the 'T' of CENTS. The outside line of the oval is also doubled on the right side, from the bottom of the upper right scroll to the top of the scroll work above the right '3'. There is also doubling over the right three and of the right '3'.

The bottom frame line is doubled from under the 'T' of CENTS to the right frame line. The left '3' shows signs of doubling as does the scroll work to the left of the left '3'.  
A nice re-entry!

**A STUDY GROUP OF THE BRITISH NORTH AMERICAN PHILATELIC SOCIETY**



Figure 2

Here is a nice little re-entry. The `circles' at the top of the scroll work at the upper left and right of this stamp are doubled; both `3's' are re-entered. All the letters in `CENTS' are re-entered and the bottom frame line is doubled.



Figure 3

Another nice re-entry at the top and bottom of this stamp. The letters `CANAD' and `POSTGE' are re-entered. Both bottom `3's' show signs of doubling. All the letters in `CENTS' are re-entered and the frame of `CENTS' above the `TS' and to the right of the `S' is doubled.



Figure 4

Figure 4, and the last of the 3 cent small queens for this issue, shows doubling of the upper left and upper right scroll work. The letters 'C, N, A, D' of CANADA are re-entered as are 'P, O, S, A, and G' of POSTAGE. The Queen's crown is also re-entered.



Figure 5

You don't very often find re-entries on the Admiral issue. Thanks to Art Halpert for sending us some nice copies. They will be featured in the next few issues.

Figure 5 shows a real nice re-entry in the left stamp of the pair. The 'CAN' and 'AGE' are re-entered. The inside oval has lines of re-entry under the 'A' of CANADA and under the 'STA' of POSTAGE.

**MAJOR RE-ENTRY**  
**DOUBLING OF CANADA POSTAGE AND OVAL BAND**

*Type R10. The lower left frame junction line is broken below the top of the spandrel and the vertical line of left numeral box has two weak spots near the bottom.*

*Plate 74UL, Position 6*  
*(Middle Stamp)*



Figure 6

*2 cent Green*  
*(First Issued: June 6, 1922)*

*Type RE2. No dot near the left numeral box; the vertical line in the upper left is unbroken.*

*Significant Re-entry: Doubling in the left numeral box of the horizontal lines, some letters of TWO CENTS, the ends of 6 or 7 horizontal lines at the top of the lower left spandrel, the outside oval band opposite leaf 4 in the lower left, of both sides of the frame and of the vertical line in the upper right spandrel.*

*Plate 228 LL, Position 85*



Figure 7

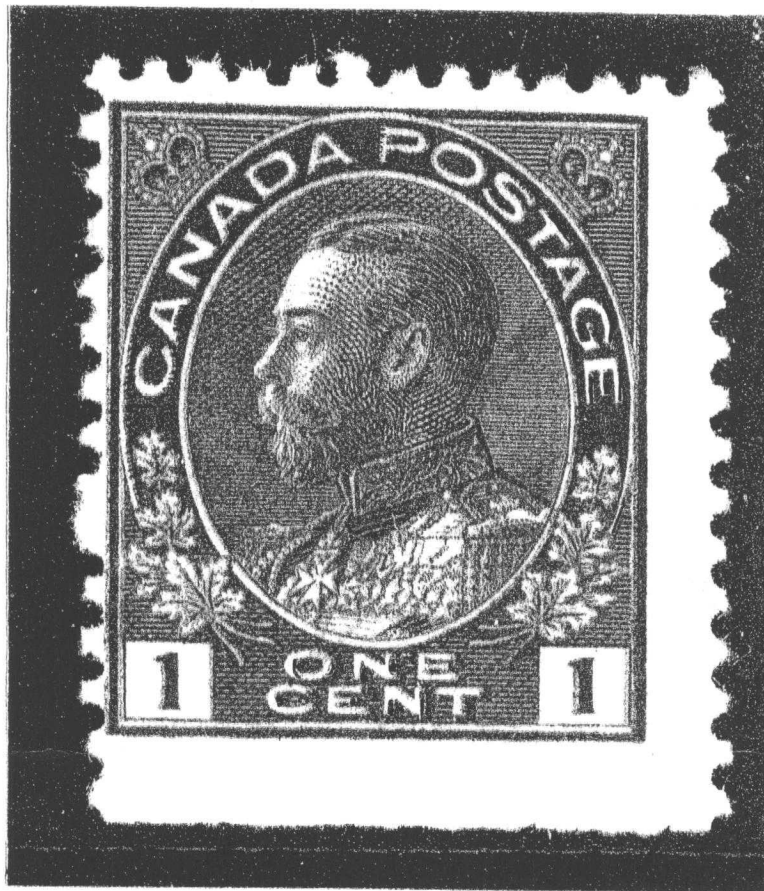


Figure 8

This stamp is re-entered and also has what appears to be a printing shift to the left. The letters `CA` of CANADA show signs of very minor re-entry. The letters `P S and T` also minor doubling. `G and E` are quite strong. The outside oval is re-entered on the right side above the middle leaf. The letters `O N` in `ONE` and all the letters of CENT are doubled.

I hope the printing shift is noticeable as it is quite strong.

Many thanks to Ron and Art for their thoughtfulness in sending their finds to us for publication. It is much appreciated.

**VOLUME 20 NUMBER 3 JULY - AUG - SEPT 2002 WHOLE NUMBER 89**

**All Correspondence should be sent to:**

Hal Kellett  
231 Briarvale Bay  
Saskatoon, Sask.  
S7V 1B8

Ph. 306 - 374 - 4282  
E-mail - [hkstampsandcovers@shaw.ca](mailto:hkstampsandcovers@shaw.ca)

**Dues and address changes to:**

John Jamieson  
Saskatoon Stamp Centre  
Box 1870  
Saskatoon, Sk.  
S7K 3S2

Ph. 306 - 931 - 6633  
Fax: 306 - 975 - 3728