

NEWSLETTER

CANADIAN RE-ENTRY STUDY GROUP

It has been a hot, dry summer in the west. Other than a few sprinkles here and there we've had one good rain. Marie and I have been busy this summer in our yard, staining fences and trying to keep everything watered and trimmed.

I would like to congratulate Harry Voss on obtaining a Vermeil for his Canadian Re-entry exhibit at the Royal in Edmonton this past spring. Harry has obviously put a great deal of time and effort into this exhibit and I was pleased to see that all his work paid off. The judges were impressed.

Harry's exhibit is available in booklet form from the Saskatoon Stamp Centre.

Ralph Trimble has a new web site devoted to re-entries. The address is www.re-entries.com. This web site put together by Ralph is just super. The photos, of course, are all in color and show the re-entries as good as you are ever going to see them, unless you have the actual stamp. I was totally impressed Ralph. This site will be a beautiful educational tool for our hobby!

Thanks to Michael D. Smith for the following article.

A Possible Misplaced Entry On The 1937 King George VI



This stamp shows extra lines in the 'NA' of CANADA and are a real eye catcher. On looking closer at the stamp one can see spots or lines of color in the inner portrait oval under the last 'S' of POSTES, 'CA' of CANADA, and 'P' of Postage. I don't believe these to be ink smears. At the lower right above the 4 there is a small line in the ornament. There are also two small marks in the top of the '4'. See Figure 1 and Figure 2.

Do any readers have other opinions on this stamp?
Has anyone else found one - plate and position?

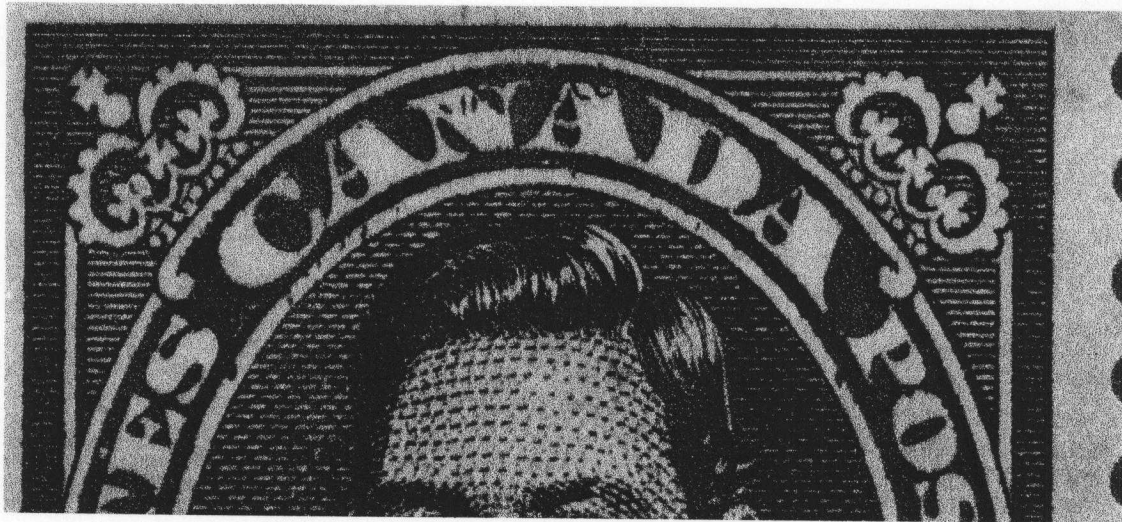


Fig. 1



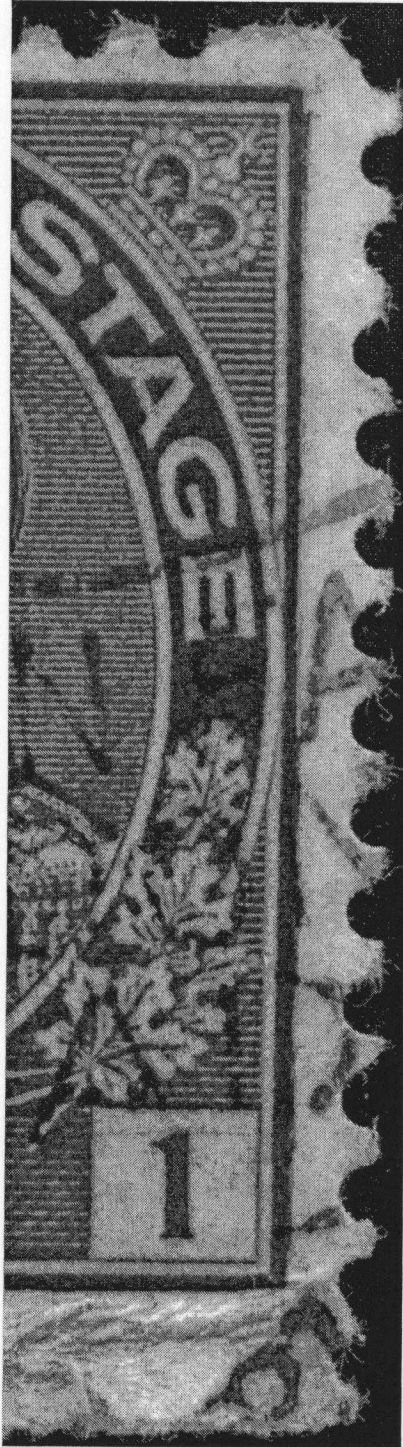
Fig. 2

Thanks to Art Halpert for the following Admiral re-entry submissions.

**King George V Admiral Issue - 1911 - 1925
CSC #104 1 Cent Green**

Type R 1. The lower left frame junction line and the vertical line of the left numeral box are unbroken - figure 3. This appears to be Plate No. 78, Position 99. There is doubling of the right frame line and traces throughout the stamp.

Figure 3



CSC #113

Figure 4

Here is another nice re-entry on the 7¢ Admiral. This re-entry is 1R 81 in Marler.

There is doubling in the left margin opposite the 'C' of CANADA. Doubling in the outside oval opposite 'C, A' of CANADA.

There is doubling in the inside oval below the 'G, E' of POSTAGE; lines of re-entry in the 'G' and 'E' of POSTAGE.

Doubling down the inside frame from the 'G' to the 'E' of POSTAGE.

CSC # 113

Figure 5

This stamp is 2L 69 in Marler. The inside oval shows doubling under the 'G, E' of POSTAGE; doubling in the inside frame above 'G, E' of POSTAGE.

NEWFOUNDLAND
1865 Decimal Currency Issue

Figure 6

The lines of re-entry on this stamp are quite short. They are numerous in the upper right and lower right corners.

The 'F' and 'V' of the upper right 'FIVE' show small re-entry lines. There is a short line under the '1' of 'FIVE'. There is a small dot in the right numeral '5'.

The 'D, L, N, D' of Newfoundland are all re-entered. There are re-entry lines under the 'A, N' of Newfoundland.

There is a dot under the 'D' of Newfoundland and a dot in the loop of the scroll work under the right '5'.

There are small lines of re-entry in the 'N, T' of 'CENTS' and in the frame line under 'T, S' and the lower right '5'. There are also three small dots in the lower right '5'.

Figure 4

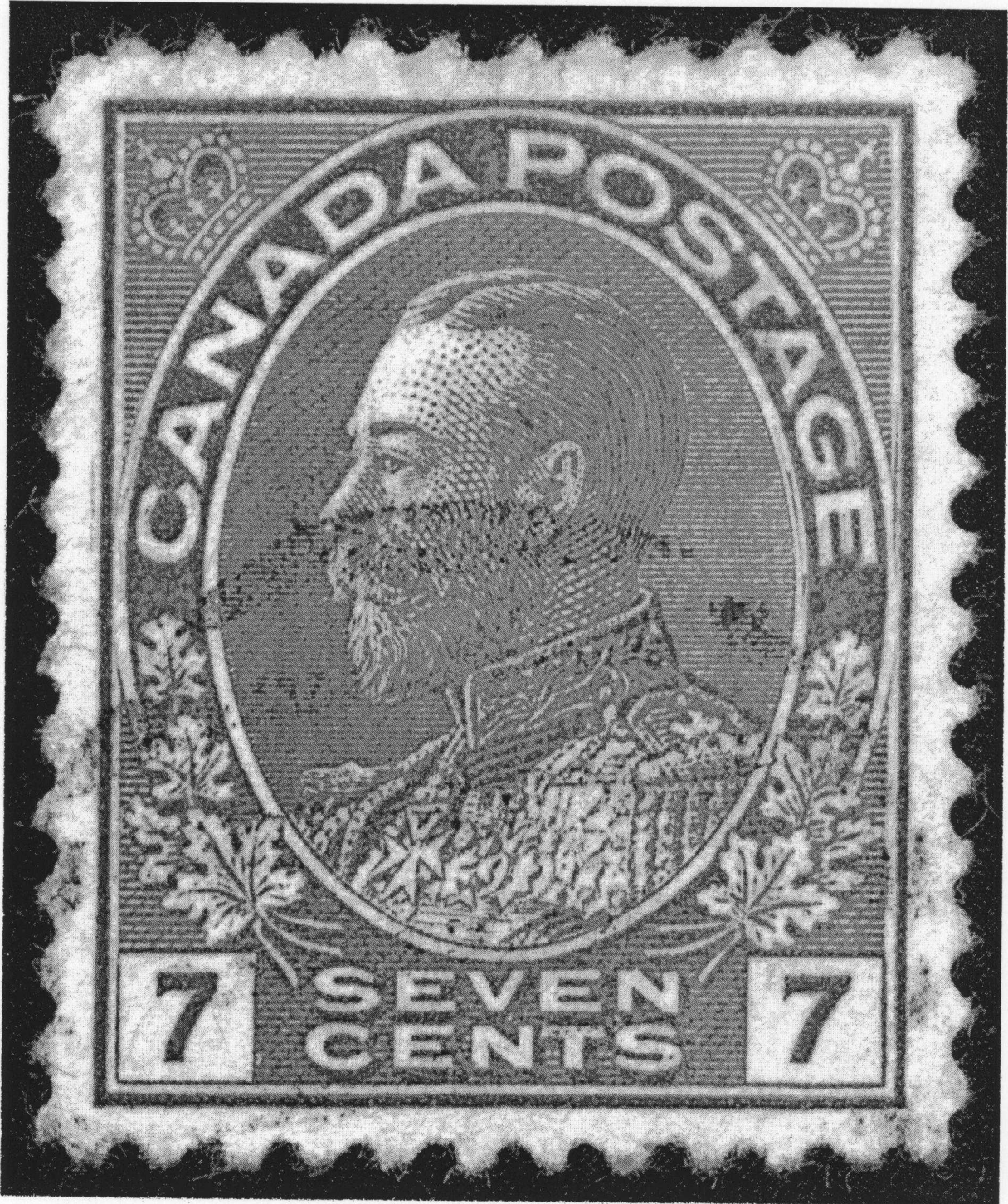


Figure 5

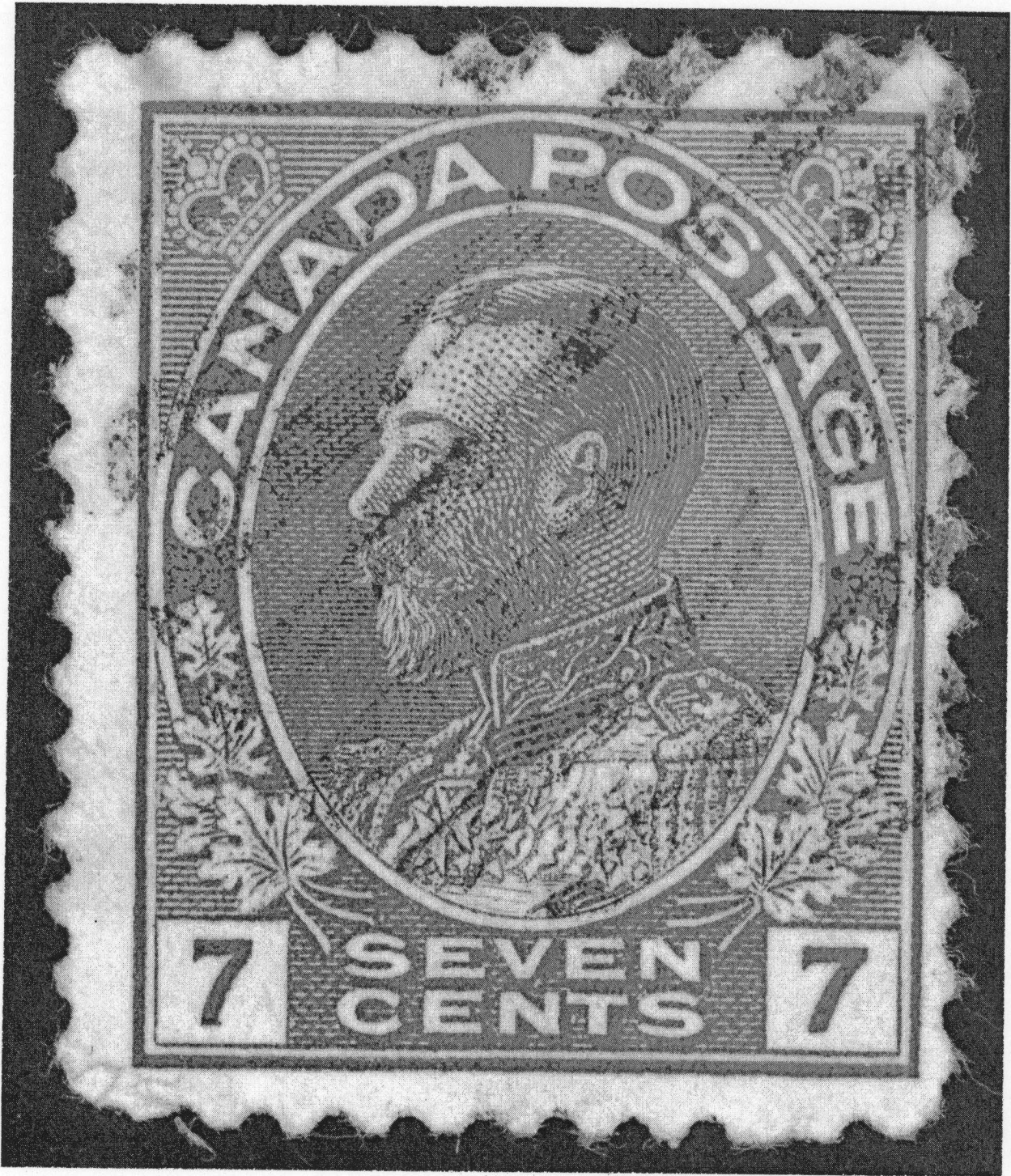


Figure 6



In the last issue, WHOLE NUMBER 87, we included an article by Don Krause regarding a re-entry he found on the Wilding 5 cent definitive. Since, Don has kindly sent the actual stamps to us for examination. Don also sent us a copy of the 1 cent Wilding, the 4 cent Wilding and 3 copies of the 5 cent Wilding.

The 1 cent shows doubling of both lower ovals, the tops of the letters in 'CANADA' (best on the 'N'), the diagonal lines between the last 'A' and the base of the 'R', 1¢ and the short diagonals over 'ANA'.

The 4 cent has doubling of both lower ovals, top and bottom of 'CANADA', bottom frame line and especially the '1954'.

The 5 cent has doubling of the top frame line and top ovals. A second 5 cent copy has doubling of both lower ovals, top and bottom of 'CANADA' and 1954.

044: At the bottom of the stamp, doubling of both lower ovals, top and bottom of 'CANADA' and 1954.

Don says these stamps are not unique. Among his other 'Wildings' he also has a used 1 cent and 3 cent and UR corner copy from a 4 cent booklet pane that has the doubling on top. He also has a used 040 doubled on the bottom and a used 1 cent block of 12 where 10 stamps show some degree of doubling in the letters. Among his several 5 cent copies, the doubling is variable - sometimes only the lower ovals, sometimes only the bottom of the letters. He has found no Wildings with doubling top and bottom.

When looking for these re-entries, you will need a 30x magnifier. The 4 cent is the best and the 044 is pretty clear as well. Figure 7 shows where to look for these re-entries. We tried scanning these stamps but the re-entries didn't show up when printed out.

Figure 7



1935 King George V Pictorial Issue- CSC #219

Don Krause has found a nice re-entry on this stamp as well! Don advises to start your search by looking at the King's left eye - Figure 8.

Figure 8



Almost all of the engraved lines above and below and making up the eye are doubled. There is more doubling of the hair in front of and above the ear; lines in forehead; hair on the top of his head; his beard from below the ear down to his collar. There is also some evidence of doubling above and below his right eye.

Don has found several used copies of 219 prior to his finding the mint block in his 'varieties' collection. He also has a Plate 3 LL block of 6 of #218, positions 88, 89, 90, 98, 99 and 100. Position 98 of this block also shows doubling of the eye.

Don invites your comments regarding these re-entries.

Here again attempts at scanning the re-entries on this stamp didn't show up.

All correspondence should be sent to:

Hal Kellett
231 Briarvale Bay
Saskatoon, Sask.
S7V 1B8

Ph. 306 - 374 - 4282
e-mail - hkstampsandcovers@shaw.ca

Dues, address changes to:

John Jamieson
Saskatoon Stamp Centre
Box 1870
Saskatoon, Sask.
S7K 3S2

Ph. 306 - 931 - 6633
Fax: 306 - 975 - 3728
e-mail - ssc@sk.sympatico.ca