

VOLUME 19 NUMBER 4 OCT - NOV - DEC 2001 WHOLE NUMBER 86

NEWSLETTER

CANADIAN RE-ENTRY STUDY GROUP

Hope you all had a wonderful Christmas season and are ready for another year of great re-entry study group articles. This issue is about a month late due to a very busy Christmas and holiday at the Turks and Caicos Islands. Marie and I arrived there January 3/02 and left January 24/02. It was +85 when we left and -30 in Saskatoon when we got home., also on Jan. 24/02. We are off to Victoria, B.C. for 6 weeks and plan to take in the Richmond and Victoptical shows.

Admiral Issue - 1911 - 25 CSC #113



Here is a nice Admiral re-entry courtesy of John Jamieson.

The outside right frame line shows a strong re-entry line running from the top of the 'G' to below the 'E' of POSTAGE. There is doubling in the 'G' and 'E' as well as re-entry lines running from the 'G' and 'E' in the white portion of the oval. This re-entry maybe written up in the Marler as he describes several re-entries that may fit, however none of the descriptions fits exactly.

1903 - 1908 KING EDWARD V11 ISSUE

Very Good Re-Entry - Position Unknown



Here is a 5¢ Edward from Bill MacDonald's collection. (He had found three of them).

The left frame line is doubled from the top left of the stamp to a point even with the 'N' of CANADA. The left crown has small lines of re-entry. The letters 'C, N, D, A' of CANADA are all re-entered as are all the letters in POSTAGE. The top frame line is doubled from above the 'P' of POSTAGE to the end of the right frame line. The right crown and shade lines around it are re-entered.

Shade lines starting below the 'E' of POSTAGE in the oval frame are doubled around to the 'F' of FIVE.

Every letter in 'FIVE CENTS' has been re-entered.

The king's cloak shows small lines of re-entry all over.

The bottom right and bottom left of this stamp are also heavily re-entered, in and around the leaves and numeral boxes making this stamp very strongly re-entered indeed across the bottom!

VOLUME 19 NUMBER 4 OCT - NOV - DEC 2001 WHOLE NUMBER 86

NEWFOUNDLAND

**1865 DECIMAL CURRENCY ISSUE
NEW YORK PRINTINGS 1865 - 1879**

Recess-printed by the National Bank Note Co., New York in sheets of 100-10x10

THREE CENT BLUE CSC #39

Strong re-entry - printer unknown. It has been awhile since I've written up any Newfoundland re-entries. Here is a dandy from the Bill MacDonald Collection.



VOLUME 19 NUMBER 4 OCT - NOV - DEC 2001 WHOLE NUMBER 86

The scroll work at the upper left is doubled as is the left '3'. A line of re-entry runs over the top of the stamp from the left scroll to the 'R' of THREE.

Each of the letters of THREE shows doubling. The right three and scroll work on the right side are re-entered.

There is doubling of the scroll work in the bottom right and across the bottom of the stamp. The left star and the outside lines of the left bottom scroll work show signs of re-entry.

All letters of the bottom THREE show small lines of re-entry. The 'E' and 'S' of CENTS are also slightly re-entered.

**1865 CURRENCY ISSUE
The Montreal Printings - 1880 - 1887**

Recess-Printed by the British-American Bank Note Co. in sheets of 100-10x10

FIVE CENT BLUE

Number Issued Unknown - CSC Nos. 53-54-55



MINOR RE-ENTRIES

Positions not known



VOLUME 19 NUMBER 4 OCT - NOV - DEC 2001 WHOLE NUMBER 86

Starting with the stamp on the left the shade lines in the upper left corner are doubled above the 'N'. There is a horizontal line running in from the margin of the stamp into the shade lines. I am working from photocopies here and am thinking this line may be a guideline or hair line.

Following down the left side of the stamp the scroll work to the left of the 'N' is doubled, shade lines under the 'N' are doubled, there is a line of re-entry running all along the left frame. Shade lines above the '5' are doubled, the circle around the '5' is doubled from the 12 o'clock to 3 o'clock position.

The middle stamp shows doubling of the shade lines above the letters 'N, E, W, F'. The scroll work to the left of the 'N' is doubled and the left frame line is doubled all along the frame line.

The stamp on the right shows the same doubling of shade lines above 'N, E, W, F' as the centre stamp. The shade lines under 'N, E, W, F' are doubled. No other re-entries on this stamp.

NEWFOUNDLAND

1928 PUBLICITY ISSUE

engraved and Printed by De la Rue & Co. in sheets of 100-10x10

ONE CENT GREEN

Number issued 3,015,000 CSC No. 145

MAJOR MISPLACED RE-ENTRY

Position Unknown



VOLUME 19 NUMBER 4 OCT - NOV - DEC 2001 WHOLE NUMBER 86

This re-entry is 1.5mm upwards with traces of the bottom left scroll in 'Newfoundland'. There are small lines elsewhere. 'Quebec' shows up re-entered just below 'Labrador'. The re-entered 'Labrador' shows up just above 'Newfoundland' and finally 'FOUNDL' is above the misplaced 'Labrador'. There is also a line in the left rosette below ' '.

This particular Newfoundland issue is very strong with re-entries. A look through dealer's stock of this stamp may be rewarding!

REPORT ON THE C-9 AIR MAIL STAMP - 7 CENTS 1946

By Bill Pekonen

Each of the varieties identified to date are distinctly different from each other. Brief descriptions follow. Other identifying marks can be found within the margins, but not included in this listing.

It should be noted that some positions exist with two or more different states resulting from 2 or more printings from different plates. A good example is Plate 2LL stamps #5 & #10. Examples have been found with and without a major re-entry on C9. Mint or Used stamps of CO1 from this position which include the re-entry are unreported to this date (Jan. 21, 2002) but are a possibility. Plate 1, UL includes a re-entry on stamp #10, while stamp #5 shows only a thick bottom line. It is possible that the thick bottom line may actually show up as a double line on other copies of the stamp. Plate 2 UR, stamps 5 & 10 do not have the re-entry on any sheets examined to date in either C9 or CO1. There is a slight possibility that stamp #5 from this position may show some doubling on some copies. Some stamps from all panes show a thicker line along parts of the outer frame. On some copies, this line shows two separate lines, raising the question: is the thicker line due to heavy ink covering up what could be a line separation or a worn die or an example of where the re-entry simply is so close to the other line that it is indistinguishable? The "re-entries" are usually accompanied with doubling of the adjoining short vertical or horizontal lines within the outer frame. The doubling of these short lines is at 90 degrees to the re-entry line and is an indicator. When combined with a **thicker** line, these doubled short lines are the clue which confirms the possibility of a "re-entry".

Plate 1 UL

- #5 Slight doubling of bottom line at left merging into a thick line towards the right corner
- #10 Doubling in LR corner, along bottom line (thick on many copies), doubling of shading horizontal lines below right value tablet
- #25 Doubling of short vertical lines UL: left and bottom frame lines thicker
- # 30 Doubling in LR corner
- #45 Doubling in UL and LR

Plate 1 UR

- #15 Doubling in UR

Plate 1 LL

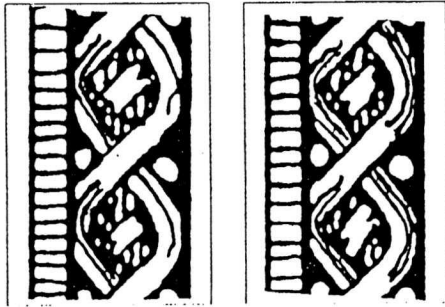
- #6 Doubling of Bottom frame line

VOLUME 19 NUMBER 4 OCT - NOV - DEC 2001 WHOLE NUMBER 86

- #41 Major re-entry Doubling in left and right frame lines, and in UR
- Plate 1LR
#25 Doubling of right frame line and in dash in left value tablet
- #49 Major re-entry - partial Doubling in left, right and bottom frame lines and in UR and left tablet value
- Plate 2 UL
#30 Partial doubling of left frame line, in UL top frame line and in first four loops in the ribbon
- Plate 2 UR As reported previously by John Jamieson (See note at end of article).
- Plate 2 LL
#5 Major re-entry Doubling of both right and left frame lines, doubling in UL, LL and LR. Doubling in left ribbon. Both left and right value tablets show doubling. Left ribbon doubled at top and at bottom
- #10 Major re-entry. Doubling of both right and left frame lines, in UL, UR, LL and LR. Doubling in left ribbon. Both left and right value tablets show doubling. Left ribbon doubled at top and bottom
- #15 Major re-entry Doubling in both right and left frame lines. Doubling in UL, UR, LL and LR corners. Doubling in left and right value tablets. Doubling in left and top ribbons
- #20 Left frame line thick. Doubling in UL, UR and LL. Right frame line partially doubled. Doubling in Left value table. Partial doubling at top of left ribbon.
- #25 Left frame line is thick. Doubling in UL, LL and UR. Partial doubling of right frame line. Partial doubling of bottom line. First five complete scrolls down from the top of the left ribbon are doubled with the sixth scroll doubled only on the left side
- Plate 2LR
#50 Doubling in UR and LR. Thicker Right frame. Partial doubling of Bottom frame line. Doubling at top of right value tablet. Right ribbon weaker in printing than left frame line on some copies. Can be found with and without the re-entry.

All of these re-entries should be found on both CO1 and CO2 because these sheets were overprinted on field stock. As you can see from the above, there are two candidates for positions #5 & #10 - Plate 1 UL and Plate 2 LL. The key to recognize the difference is to look at the left and right value tablets. If no doubling exists in the value tablets, then the stamp is Plate 1UL. If doubling exists, then the stamp is Plate 2 LL. If the doubling is only in the left and bottom frame lines and UL and LL corners, then you may have a copy of Plate 2 UR, stamp #5, especially if stamp #10 shows no doubling whatsoever. Illustrations of typical indicators are given to help readers to distinguish identifying characteristics.

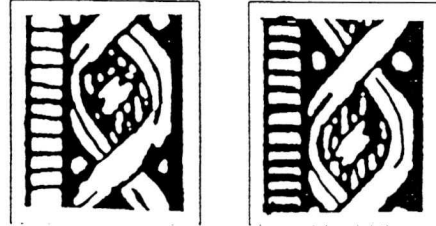
Ribbons Either Horizontal or Vertical



Partial Scroll

Complete Scroll

Short Vertical / Horizontal Lines



Normal

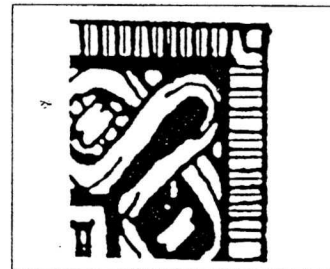
Thick



Corner Loop



2 Separate Lines



Corner Influence

Vertical / Horizontal Border Lines



Normal



Thick



Merging Line

Value Tablets Either Left or Right



Outside

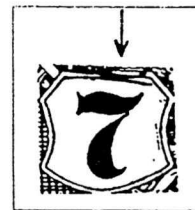
Inside



2 Separate Lines (Doubled) Inside



2 Separate Lines (Doubled) Outside



Top

VOLUME 19 NUMBER 4 OCT - NOV - DEC 2001 WHOLE NUMBER 86

I would like to thank the members of the Re-Entry Study Group who submitted articles this past year - it is much appreciated.

Dues for 2002 are now due. They are still \$10 a year.

All correspondence should be sent to:

Hal Kellett
231 Briarvale Bay
Saskatoon, Sask.
S7V 1B8

Ph. 306 - 374 - 4282
e-mail - hkstampsandcovers@shaw.ca

Dues, address changes to:

John Jamieson
Box 1870
Saskatoon, Sask.
S7K 3S2

Ph. 306 - 931 - 6633
Fax: 306 - 975 - 3728
e-mail - ssc@sk.sympatico.ca