

NEWSLETTER

CANADIAN RE-ENTRY STUDY GROUP

CANADA 3Pi 12d Block Plate Proof on India on card in block of 4 - Vertical 'SPECIMEN' in Carmine

This item was supplied by John Jamieson. John was good enough to lend me this item for a couple of days to study and for inclusion in this newsletter. Thank you John.

All four of the proofs are re-entered. Unfortunately my scanner has not been able to do justice to the re-entries, so I have had to draw them in by hand.

I will start with the upper Left Proof in the block. There is a re-entry running from the 'W' in Twelve to a point approximately 2 mm below the top of the frameline. This re-entry is to the left of the left frameline, mid-point between the edge of the proof and the frameline. The re-entry is very strong.

To the right of the left frameline, there is another long re-entry which runs from the 'N' of CANADA to the bottom frameline. There are two small breaks in this line, the first even with 'W' of Twelve, the second just above the '1' of 12. Each break is about 2 mm.

There is strong doubling of the right frameline from the 'E' of POSTAGE down to the '2' of 12. The bottom frameline is re-entered from a point below the '1' of 12 to below the 'L' of Twelve. The shade lines around the Lower Right '12' are doubled. (These lines don't show up on the scan around the 12 but are the same as those seen in the oval.)

The top right proof shows signs of re-entry along the left frameline from top to bottom, although not nearly as strong as the top left proof. The top frameline shows signs of re-entry.

The right frameline has been re-entered from the 'G' of Postage down to the bottom of the inside frameline.

The bottom frameline is doubled from between the 1 and 2 of the right '12', to the 'P' of PENCE. The shade lines around the right 12 are also doubled.

The bottom left proof is re-entered heavily along the outside of the left frameline, again about mid-point between the frameline and edge of the proof. This re-entry runs along the left side of the proof from top to bottom. There is a second line of re-entry between the first re-entry just described and the frameline. This second line of re-entry also runs the length of the proof but with several starts and stops.

Between the outside and inside framelines there is a re-entry from the 'T' of Twelve to the bottom of the 'W'. The bottom frameline shows signs of doubling from the left corner to the '1' of the right 12.

On the bottom right proof the left frameline shows only faint lines of re-entry from the tops of the '1' of 12 to just below the bottom of the '1' and from the 'T' of Twelve to the bottom of the frameline..

The right frameline has been re-entered on both outside and inside of the frameline from top to bottom. Very strong lines. Shade lines around the lower left and lower right 12's are doubled. The bottom Frameline is doubled from the left side to below the '1' in the right '12'.

Quite a proof Block!





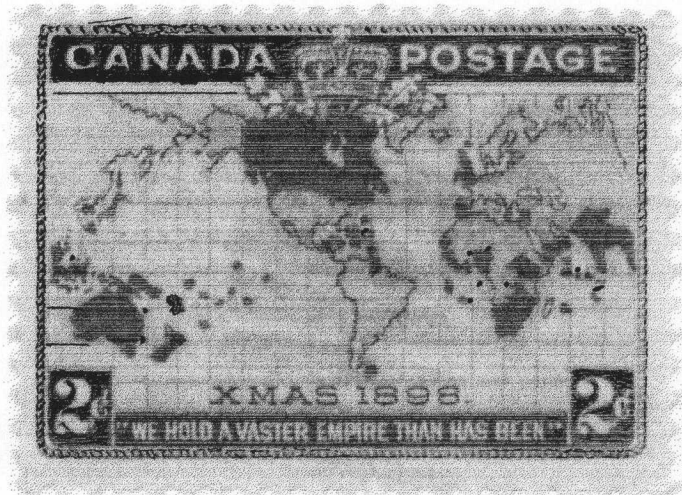
1898 IMPERIAL PENNY POSTAGE

PLATE 5B POSITION 44

By Harry Voss



State 1: Before the re-entry.



State 2: After the re-entry.
When it became a major re-entry.

State 1: Plate 5 was used very little for printing the sheets of stamps, when it became necessary to rework the black plate. The (plate B) red printing is identical in the above two stamps so it was not reworked. Black plate state 1, there is no doubling of the black printing.

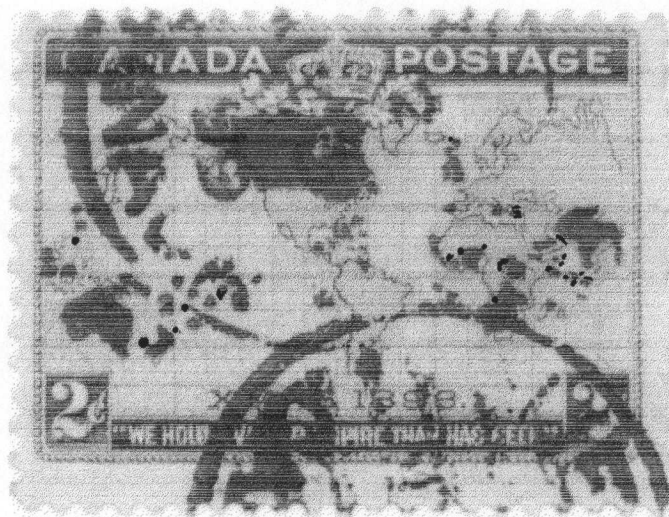
State 2: (Black plate) after the rework - becomes a major re-entry. All of the black printing is a darker black because of the doubling. There is doubling of the left numeral box shading lines, the latitude lines above this box, the left cable, the shaded area surrounding "CANADA POSTAGE", the nodes of the upper cable, the upper right corner, slightly in the right numeral box, and slightly in the lower cable. There is a quarter inch long tool mark in the margin above "C" of CANADA running in an East-North-East direction.

This is the 9th state 1 reported. The other positions are 23,35,42,53,54,56,63 and 92.

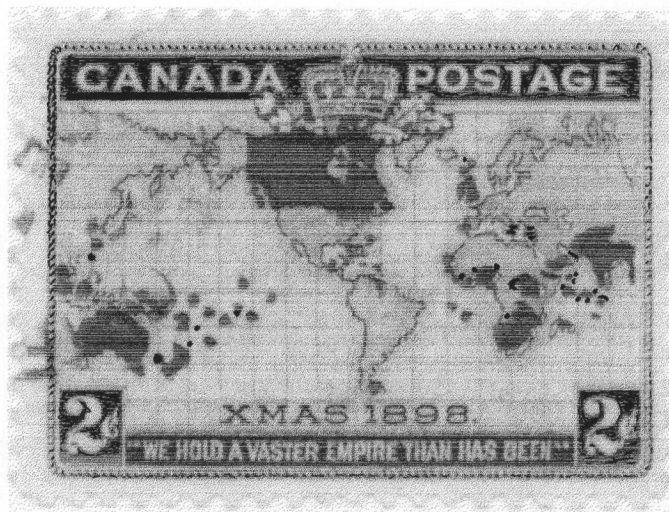
1898 IMPERIAL PENNY POSTAGE

PLATE 5B POSITION 64

By Harry Voss



State 1: Before the re-entry.



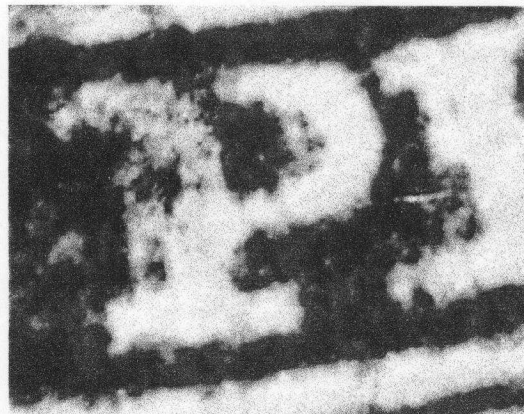
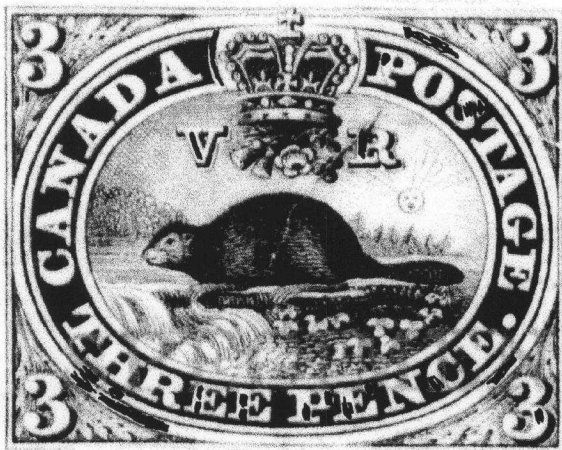
State 2: After the re-entry.
When it became a minor re-entry.

States 1&2: On the above two stamps, the red printing is identical.

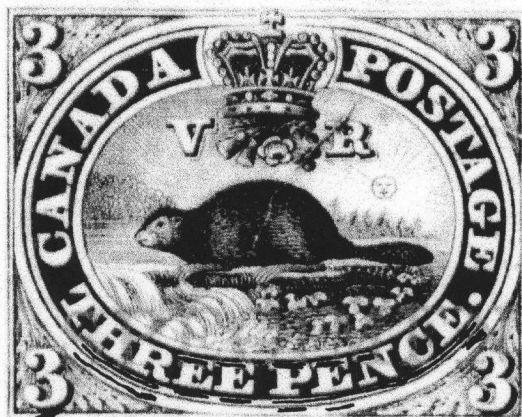
State 2: (black plate) After the rework, the doubling is minor. All of the black printing is a darker black because of the doubling. The left cable is doubled, also other cable nodes are doubled, the shade lines of the numeral boxes and shade lines of "CANADA POSTAGE" are thicker and darker, the latitude lines are also thicker.

Any member of the Re-entry Study Group interested in the map stamp should also sign up with the Christmas Map Stamp Study Group as there are a good number of re-entries to look for. Plate 5 has 7 major and 47 minor re-entries. There are also a good number of re-entries in the other plates plus cable retouches, cable recuts, missing islands, extra islands and great for cancellations. Just a fantastic stamp to work with.

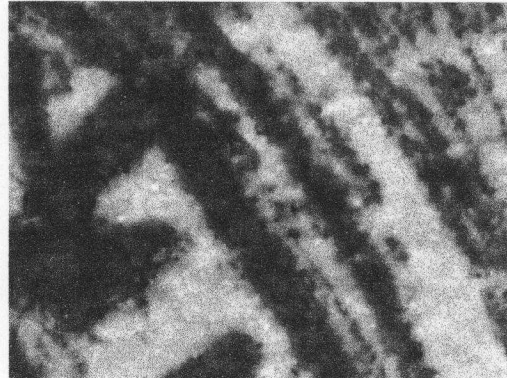
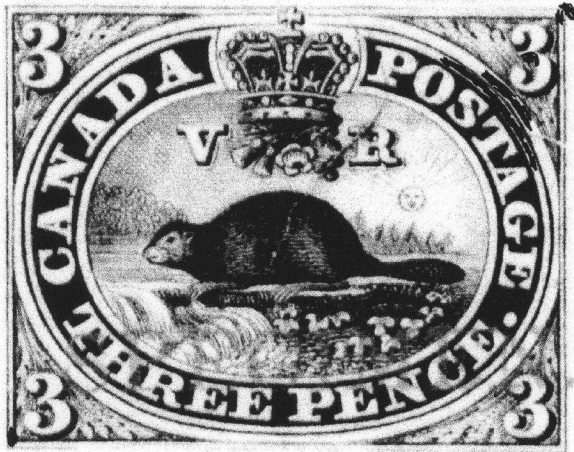
Illustrated here is a 60x enlargement of one of the most prominent features of the "B" pane, position 53, of the 3d Beaver. This re-entry is known as the "V/R", it has doubling of the curved line at the left of the crown and slight doubling of the verticals of "V/R". There also indications of re-entry in "EE PE" of THREE PENCE.



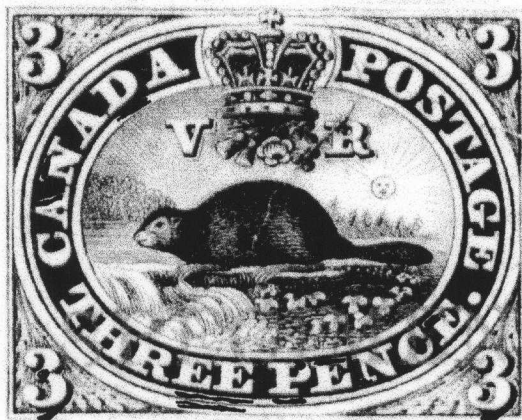
Illustrated here is an example of pane "A" position 80 of the 3d Beaver. In this re-entry there is some shading on the bottom of the left "3", there is doubling in the inner oval under "HREE PENCE" and this doubling also appears in the outer oval. There is also doubling in the top of "EE PEN".



Illustrated here is a 60x enlargement of the most prominent feature of the "B" pane, position 42, of the 3d Beaver. The main signs of the re-entry occurs in the ovals above "STA" of "POSTAGE". There are also signs of the re-entry in the upper right numeral.



Illustrated here is an example of pane "A" position 34 of the 3d Beaver. In this re-entry there is some shading in the bottom "3s", there is doubling in the outer oval under "EE PENCE" and this doubling also appears in the inner oval. There is also doubling in the top of "E" of "PENCE", and slight traces of doubling in "CAN".



VOLUME 19 NUMBER 3 JULY - AUG - SEPT 2001 WHOLE NUMBER 85

Thanks to Harry Voss and Bob Tomlinson for their contributions to this issue of your newsletter. It was good to meet some of our fellow re-entry enthusiasts at BNAPS in Ottawa. This was the third BNAPS convention I have been able to attend and they have all be well worth while. The seminars were educational and well worth attending.

All correspondence should be sent to:

Hal Kellett
231 Briarvale Bay
Saskatoon, Sask.
S7V 1B8

Ph. 306 - 374 - 4282
e-mail - hkstampsandcovers@shaw.ca

Dues, address changes to:

John Jamieson
Box 1870
Saskatoon, Sask.
S7K 3S2

Ph. 306 - 931 - 6633
Fax: 306 - 975 - 3728
e-mail - ssc@sk.sympatico.ca