

VOLUME 19 NUMBER 2 APR - MAY - JUNE 2001 WHOLE NUMBER 84

# NEWSLETTER

## CANADIAN RE-ENTRY STUDY GROUP

By the time you receive this summer will just about be over. As has most of Canada, Saskatoon has been extremely hot and our lawn sprinklers have been working overtime.

There are some nice re-entries in this issue with submissions by Harry Voss, John Jamieson and Bob Tomlinson. I hope you will find something of interest.

### 1870 - 1897 Queen Victoria Issue "The Small Queens"

**2c GREEN**

Canadian Specialized Catalogue No. 36  
Montreal Printing - Perforated 12 x 12

Recess-printed by British American Bank Note Co. at Ottawa or Montreal in panes of 200 in two panes, and each 10 x 10 separated by a vertical gutter, and in 1892 single panes of 200--20 x 10.

### MAJOR MISPLACED RE-ENTRY



Plate Position Unknown

Fig. 1

A STUDY GROUP OF THE BRITISH NORTH AMERICAN PHILATELIC SOCIETY 1

**VOLUME 19 NUMBER 2 APR - MAY - JUNE 2001 WHOLE NUMBER 84**

This stamp has doubling in CANADA and "P" of POSTAGE. The left and right "2's" show evidence of re-entry. There are also lines below the left "2" and there is a line in the margin to the right of the right "2".

The re-entry at the bottom is "R" and "S's" Fig. 3-3A. But this stamp also has re-entry in Canada which they state was not present on the examples used by them to draw it. Maybe the original re-entry was repaired with the Canada re-entry later.

**2¢ GREEN**

Canada Specialized Catalogue No. 36i  
Ottawa Printing - Perforated 12 x 12

**RE-ENTRY**



Plate Position Unknown  
**Fig. 2**

Doubling on this stamp is found in both the upper left and upper right spandrels. There is doubling under the left "2" and "5" of CENTS and in the right frameline beside the right "2".

This is a nice example of a clockwise twisted re-entry affecting all four corners of the stamp.

1898 - 1902 Queen Victoria Issue  
"The Numerals"

Recess-printed by American Bank Note Co. in sheets of 200 (20 x 10)  
Canadian Specialized Catalogue No. 75

MAJOR MISPLACED RE-ENTRY

Plate Position 1R82



**Fig 3**

The re-entry is on the top right stamp.

This remarkable misplaced re-entry was caused by an accident when the wrong master die was used to correct an error and misplaced on the plate, or a plate originally used for the 10¢ was burnished clear, but this particular part of the 10¢ was not removed. No one will really ever know exactly how this mistake happened, but it seems likely the wrong die was improperly used. The block is positions 81 - 82, 91 - 92 on the plate.

VOLUME 19 NUMBER 2 APR - MAY - JUNE 2001 WHOLE NUMBER 84

1898 - 1902 QUEEN VICTORIA ISSUE  
"The Numerals"

Recess-printed by American Bank Note Co. in sheets of 200 (20x10) divided into panes of 100 (10x10)

**ONE CENT GREEN**  
Canadian Specialized Catalogue No. 75

**NICE RE-ENTRY**



Plate Position Unknown

**Fig. 4**

Here is a nice re-entry that is doubled - one up and one down. The upper frameline is doubled, as is the shading around both maple leaves. The left and right maple leaves show signs of re-entry. The "ADA" of CANADA and the "P" of POSTAGE are re-entered.

Both "1's" are doubled at the bottom. The shade lines to the right of the left "1" and to the left of the right "1" are doubled. The bottom frame line is doubled.

VOLUME 19 NUMBER 2 APR - MAY - JUNE 2001 WHOLE NUMBER 84

1903 - 1908 KING EDWARD VII ISSUE

Canadian Specialized Catalogue No. 91

Recess-printed by the American Bank Note Co., Ottawa in sheets of 200 in two panes of 100.

VERY GOOD RE-ENTRY



Position 3R19

Fig. 5

The re-entry is on the second stamp of the pair. This re-entry is an example of a twisted counter-clockwise re-entry

.Starting on the upper left, the outside frame line is doubled from the top of the stamp down to a point even with the "N" of "CANADA". The inside frameline is doubled from the top of the crown down to its base. There is doubling of the top frameline from the last "A" of "CANADA" to the right corner. The D, A of "CANADA" AND P,O,T,A,G,E, of "POSTAGE" show signs of re-entry.

Both crowns are fairly heavily re-entered. The inside frameline above the right crown is doubled, as are the shade lines below the crown. The top of the oval above the King's head is doubled. To the right of the King's head, and even with the "A" of "POSTAGE" shade lines are doubled, down to the middle of the King's ear.

The outside oval from the "G" of "POSTAGE" around to the "N" of "CENTS" shows re-entries. The inside oval is doubled from the top of the King's head down to the

**VOLUME 19 NUMBER 2 APR - MAY - JUNE 2001 WHOLE NUMBER 84**

"S" of "CENTS". The King's beard and neck below the left ear are heavily doubled as is the King's cape. All the letters in "FIVE CENTS" show signs of re-entry.

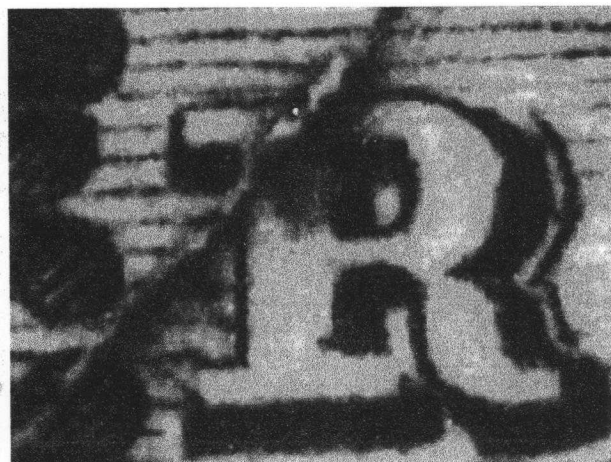
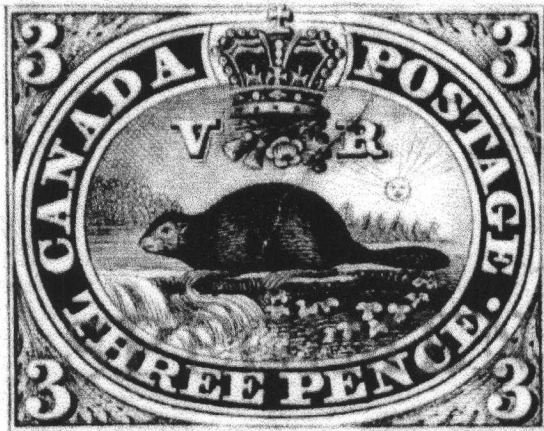
The four maple leaves, both "5's" and several boxes have been re-entered. The inside lower left frameline is doubled from just above the "F" of "FIVE". The inside lower right frameline is doubled.

The right outside frameline is doubled all the way from opposite the "G" in "POSTAGE" to the bottom of the frameline.

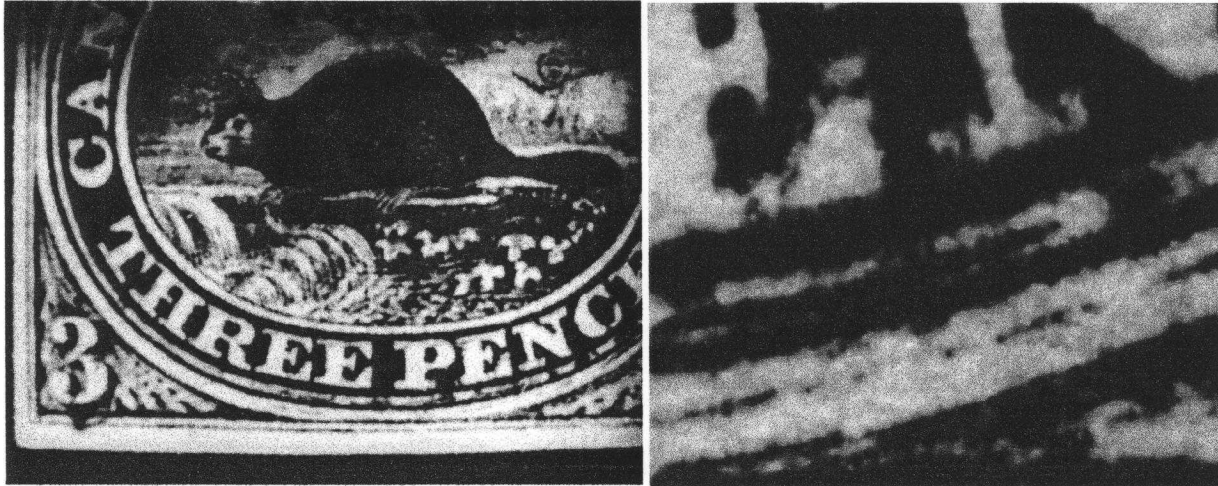
\* \* \* \* \*

This next article came from Bob Tomlinson of Osoyoos, B.C. Bob used an Intel QX3 microscope interfaced to his computer to produce the images of his stamps. He had previously been using a Pentax and bellows on a macro lens and was not satisfied with the results. Using the QX3 gives instantaneous results and the image can be adjusted for contrast.

A variety on Scott #1 and #4 is often referred to as the "Cracked Plate", rather than the correct term of "Relief Break". This is really the result of a crack in the transfer roll. When a transfer with a crack in any position of its surface is impressed on a plate, the soft metal of the plate is forced into the crack. A crack or minute crevasse on the transfer roll becomes a raised line of metal on the plate. This causes the smudgy appearance of the line. This proof discloses minute smears of ink extending irregularly away from one side of the line. These were caused by the irregular line or ridge which caught and held some of the ink against its side and was rubbed off unevenly. Depending on the direction of rubbing some areas may not have received any ink in the "shadow" thus leaving the white areas.



Pane "B" position 61 shows pronounced doubling down, of the lower left "3". There is also doubling below "EE" between both ovals plus numerous other examples of re-entry.



Lower half of stamp. Notice the "3".

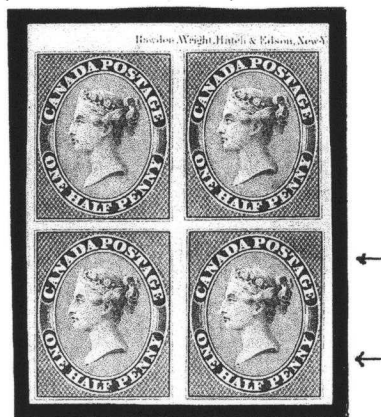
60x enlargement of "EN" & below.

This next re-entry was submitted by John Jamieson.

**CANADA SPECIALIZED CATALOGUE #8TCI VARIETY**

**1/2 d Orange Yellow Plate Proof on India**

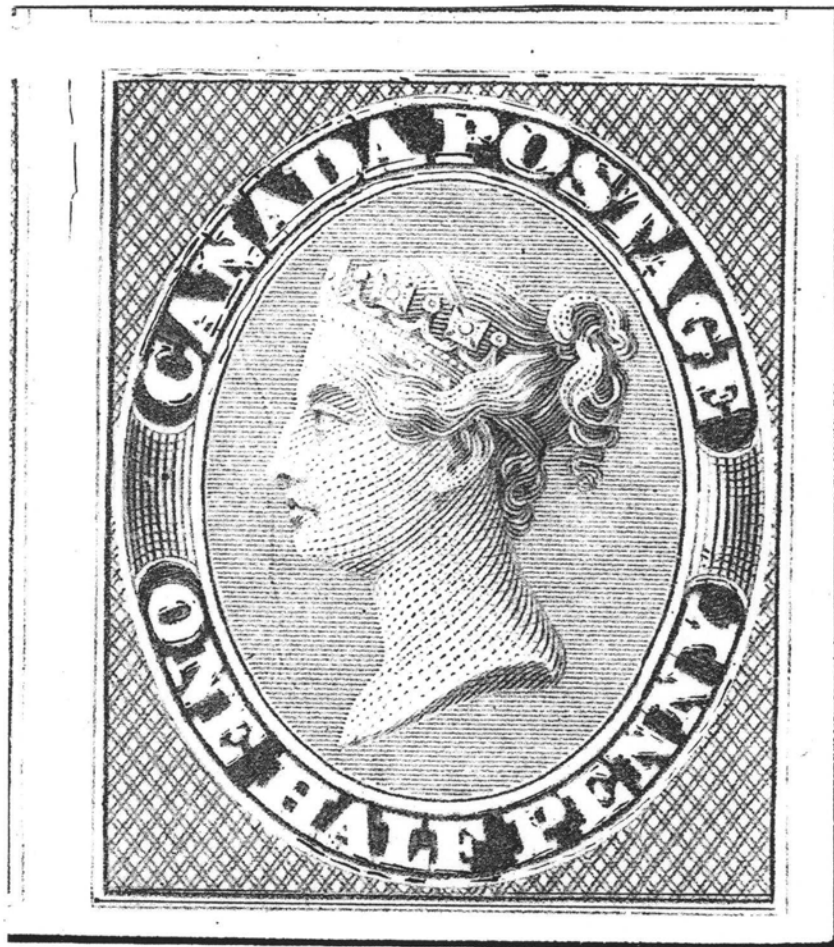
This is a top margin block with "Rawden, Wright, Hatch, and Edson, New Yo" imprint. Position #22 Major Re-Entry on LR proof, most noticeable in CANADA POST". (strong as position 120). The block is probably unique .



**L R is Position 22 MAJOR RE-ENTRY**

Position 22 has re-entry lines in the upper left margin and along the top frameline. CANADA POSTAGE is heavily re-entered as is the oval above and below CANADA POSTAGE. The "O, N" of one and all the letters of 'HALF PENNY' show signs of re-entry. The oval below "ONE HALF PENNY" also shows signs of re-entry from from the "H" around to the "Y". The lower frameline is doubled all across the bottom of the stamp.

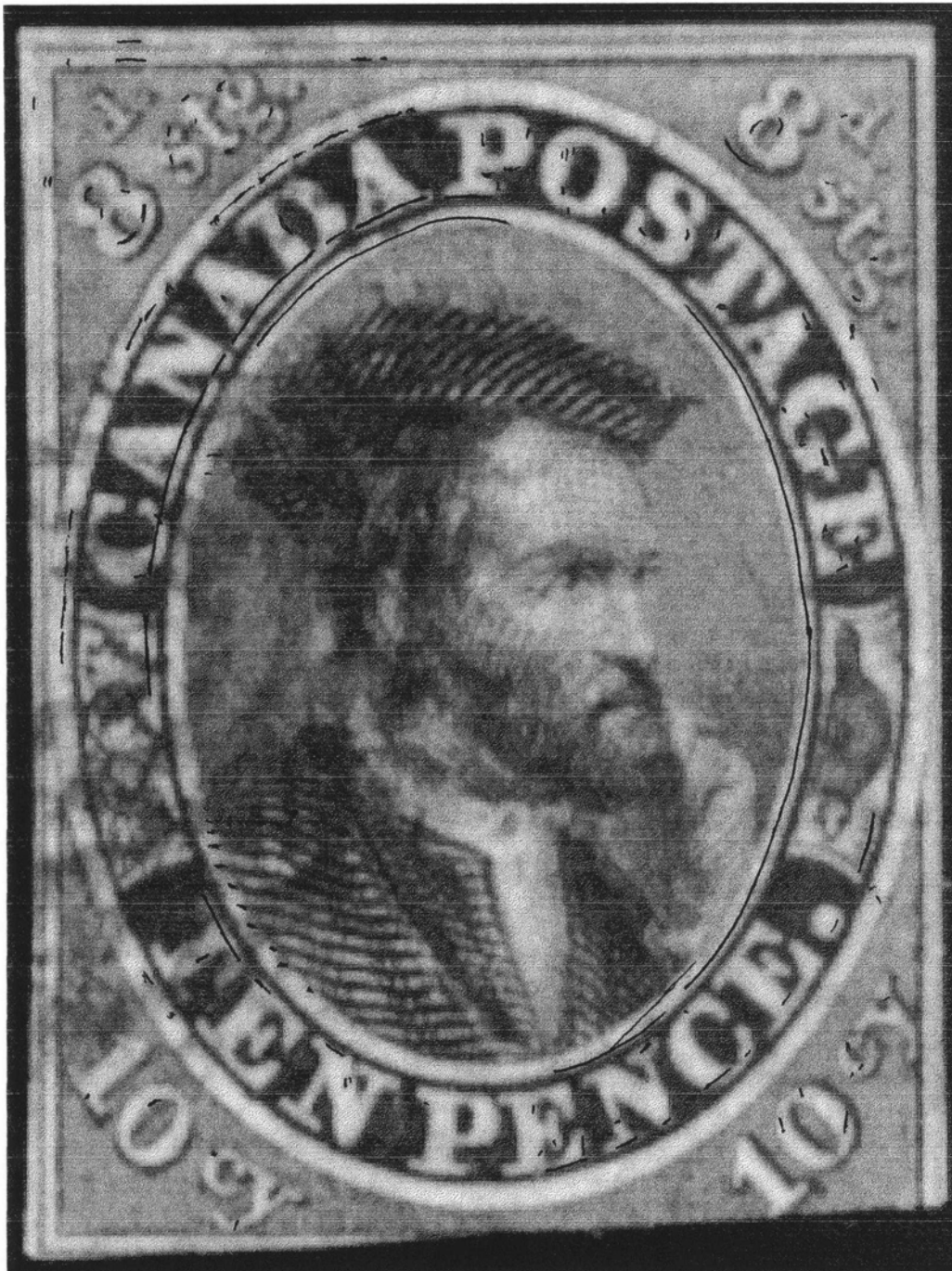
Scan of Position 22 with re-entries drawn in





#7 TEN PENCE JACQUES CARTIER

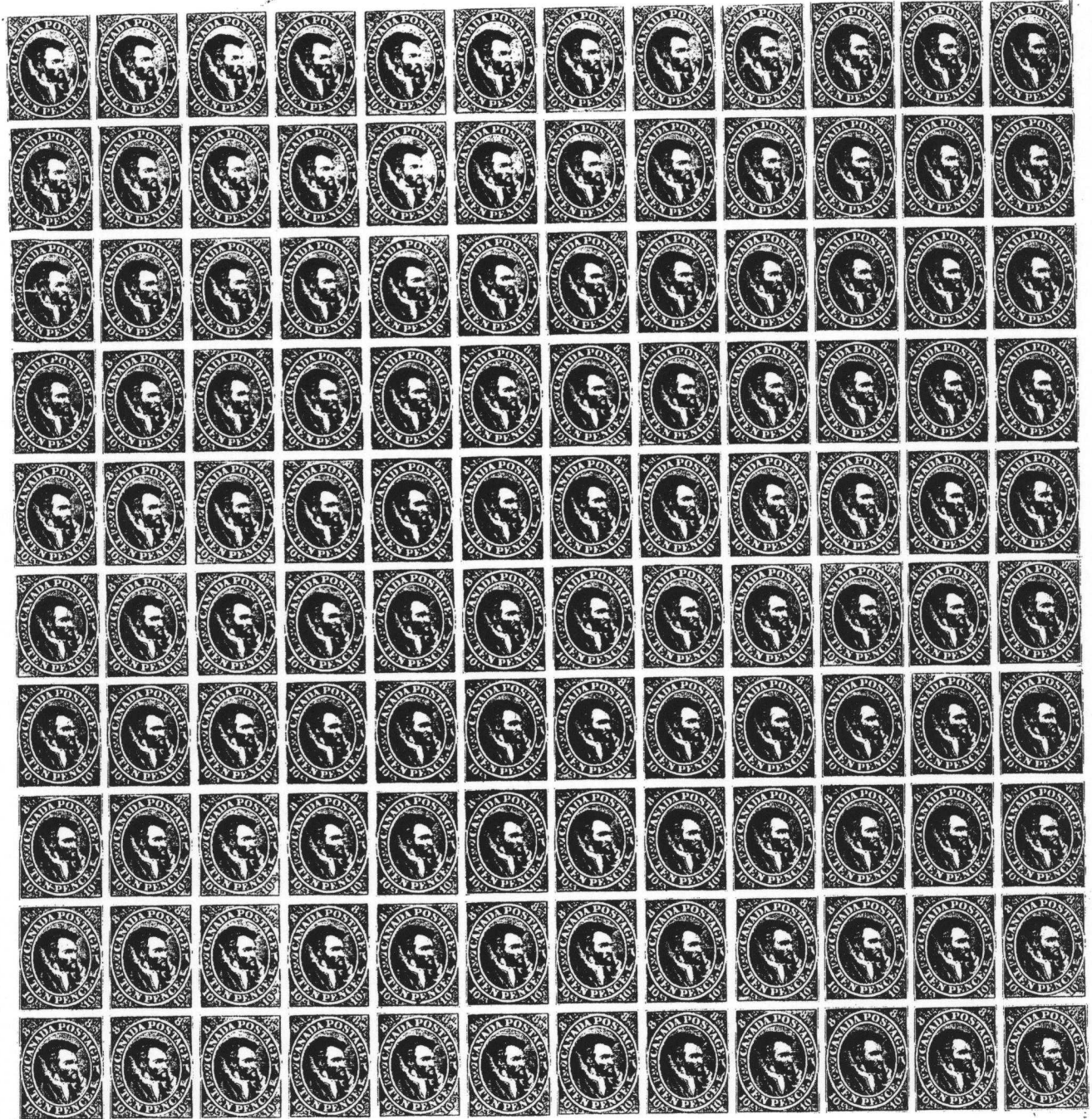
Harry Voss



This strong re-entry is plate position #29, pictured in Boggs' The Postage Stamps and Postal History of Canada as #1, also the picture of plate position #29 should be position #1.

VOLUME 19 NUMBER 2 APR - MAY - JUNE 2001 WHOLE NUMBER 84

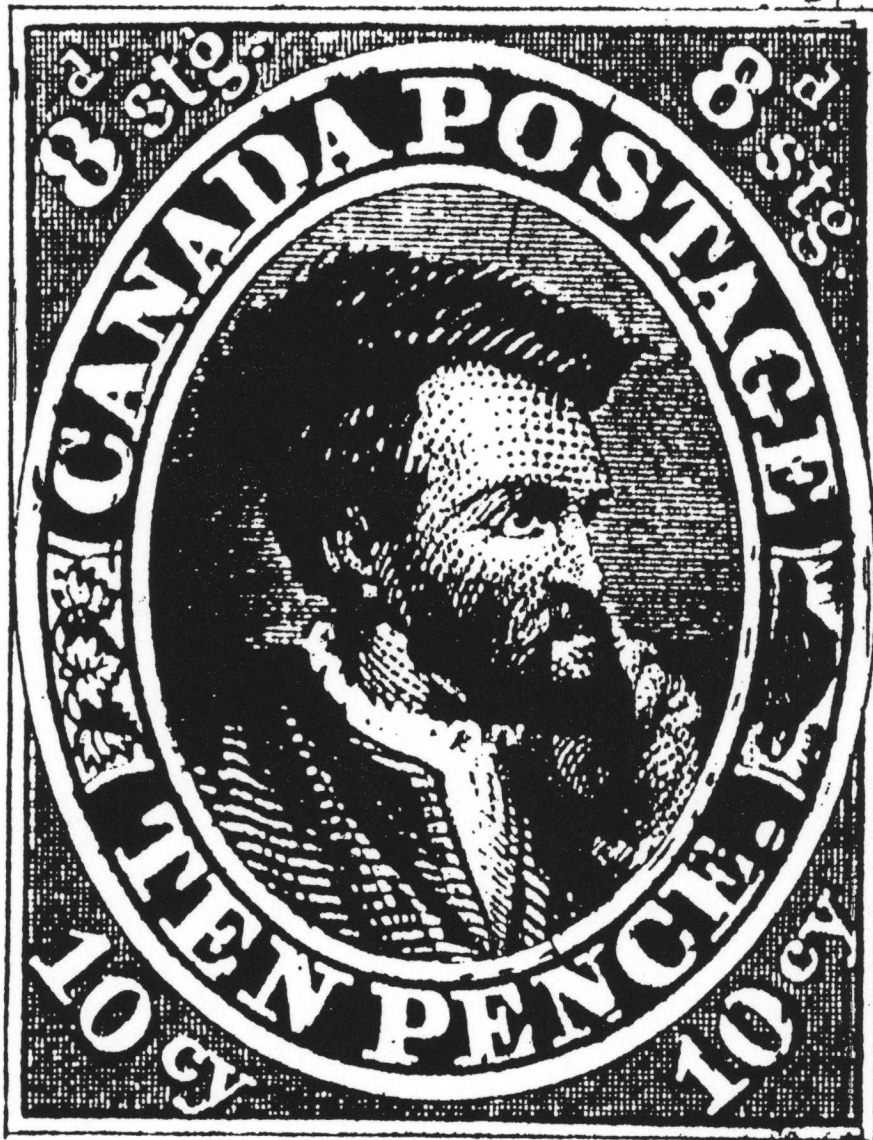
John Jamieson has given us a photocopy of a full proof sheet of #7, from the American Bank Note Co. ledger book. John has also supplied the photo of the other re-entries on #7 on the following pages.



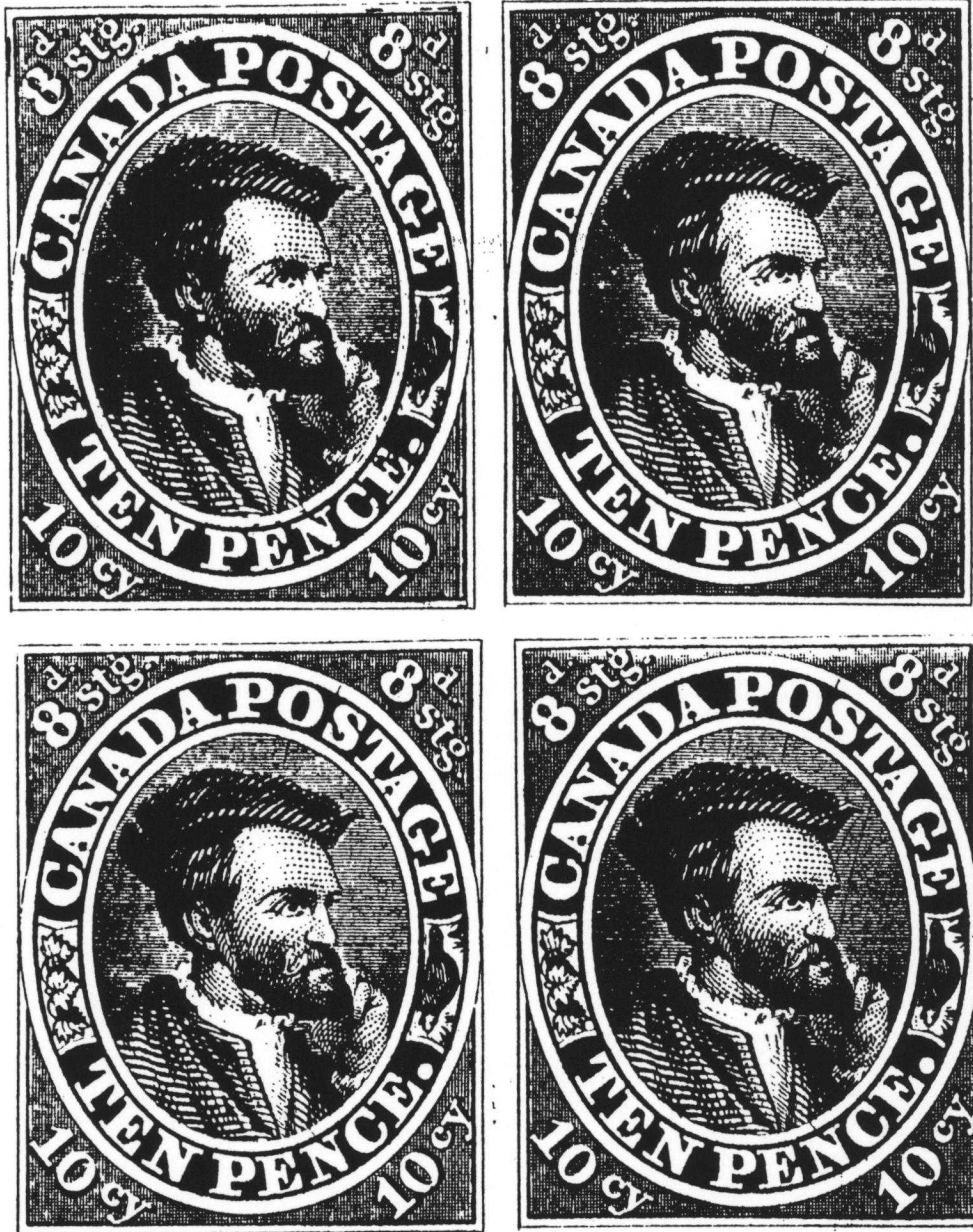
Canadian Specialized Catalogue #7

Position 1

MAJOR RE-ENTRY



This is the upper left position 1 stamp from a BLACK PROOF Block of 4.



The block with re-entries drawn in.

**VOLUME 19 NUMBER 2 APR - MAY - JUNE 2001 WHOLE NUMBER 84**

This is it for now. There are a lot of great re-entries coming up in future issues. Thank you to Harry Voss, Bob Tomlinson and John Jamieson for their contributions to this Newsletter.

Have a great `rest of the summer`.

Hal Kellett, Editor

All correspondence should be sent to:

Hal Kellett  
231 Briarvale Bay  
Saskatoon, Sask.  
S7V 1B8

Ph. 306 - 374 - 4282  
e-mail - [hkstampsandcovers@home.com](mailto:hkstampsandcovers@home.com)

Dues, address changes to:

John Jamieson  
Box 1870  
Saskatoon, Sask.  
S7K 3S2

Ph. 306 - 931 - 6633  
Fax: 306 - 975 - 3728  
e-mail - [ssc@sk.sympatico.ca](mailto:ssc@sk.sympatico.ca)