

# NEWSLETTER

## CANADIAN RE-ENTRY STUDY GROUP

Welcome to the first Newsletter of 2001!

Spring is here officially but around Saskatoon we are still waiting for the warmer weather. My wife Marie and I spent 6 weeks in British Columbia in February and March including a month in Victoria. Many thanks to Gray Scrimgeour for his hospitality while I was in Victoria and also to the "Muffin -Breakers" - a great group of collectors (very knowledgeable collectors may I add) who meet every Tuesday morning at the 'Muffin Break' for a "show and tell". What a wonderful group and their members keep growing! While out West I was able to attend the Great West Show in Richmond and Victopical in Victoria. Both shows were great lots of good material to look at. A couple of nice reentries were found including a #74 ii, the major reentry in a strip of 4 on cover so the hunt was reasonably successful.

Marie and I had a very "interesting" winter. Prior to our annual sojourn to Victoria we moved into our new home. A week prior to moving I fell on some ice while taking out the neighbour's garbage and shattered a couple of bones in my left upper arm - not pleasant. Then Marie slipped and broke a bone in her left arm above the wrist. Thank goodness for wonderful friends who pitched in and helped with the packing and the move.

### King Edward V11 Issue 1903 - 1908 - One Cent Green (Fig. 1)

Starting at the upper left the top frame line is doubled as is all the top of the crown. There is doubling in the lines below and to the right of the left crown. Traces of re-entries show at the top of the frame from the 'D' of CANADA around to the 'S' of POSTAGE. On the right crown, the top left is doubled as are the lines to the left of the right crown. The 'C', 'D' and 'A' of CANADA show some doubling as do the 'P' and 'O' of POSTAGE.

The outside left frame line is re-entered from the 'N' of CANADA to the top of the 1. The inside of the left frame line shows doubling from the bottom of the 1 to where it intersects with the outside oval. All the leaves show doubling as do the left and right tablets and each 1 'ONE CENT' has doubling in each letter. The inside oval is re-entered from the last 'A' of CANADA around to the 'E' of ONE.

The King's beard and cloak are all heavily re-entered. The bottom frame line is doubled from the 'C' of CENT to the bottom of the right frame.

This is such a strong re-entry it would be wonderful to be able to determine the plate and position.

VOLUME 19 NUMBER 1 JAN - FEB - MAR 2001 WHOLE NUMBER 83

KING EDWARD VII ISSUE 1903 - 1908

ONE CENT GREEN - Canadian Specialized Catalogue No. 89)  
(1,470,000,000 issued)

VERY STRONG RE-ENTRY  
(Position Unknown)



Figure 1

**VOLUME 19 NUMBER 1 JAN - FEB - MAR 2001 WHOLE NUMBER 83**

**Figure 2**

This counterclockwise re-entry is especially strong. The top frameline is doubled all across the top. The top of both crowns show doubling, shade lines around both crowns are all doubled. The top of the oval shows signs of re-entry from the second 'A' of CANADA to the 'S' of POSTAGE. The letters 'D, A, P and O' are all re-entered.

The outside frameline, left side is doubled from mid oval to the bottom. The left side of the left tablet is doubled and extends to the outside oval. Both tablets and all four leaves, as well as each '1' show signs of doubling.

All letters in ONE CENT are re-entered. Shade lines on the right side of the oval from the 'T' of CENT to the 'E' of 'POSTAGE' show heavy doubling. The inside line of the oval is doubled from just above the King's cloak around to the 'E' of ONE and from the 'C' of CENT around to even with the King's collar. The side of the King's neck is doubled as is the King's cloak.

**1903-1908 KING EDWARD VII ISSUE**

Recess-printed by the American Bank Note Co., Ottawa in sheets of 200 in two panes of 100 or 400 in four panes of 100 (Plates 53 to 86).

**ONE CENT GREEN**

(1,470,000,000 Issued)

Canadian Specialized Catalogue No. 89

**VERY STRONG RE-ENTRY**

(Position Unknown)



**Figure 2**

**VOLUME 19 NUMBER 1 JAN - FEB - MAR 2001 WHOLE NUMBER 83**

**Figure 3**

This is the third example of 3 lovely strong re-entries of No. 89. The top right and bottom frame lines are all doubled. The left frame line is doubled from the top left to the middle of the 'C' of CANADA. The inside left frame line is doubled from the top to the 'A' of CANADA. The left crown shows re-entering throughout.

The top of the oval is doubled from the 'A' of CANADA to the 'O' of POSTAGE. The 'C, D, A, P and O' of CANADA POSTAGE are all re-entered.

Both tablets are re-entered as are each 1. All four leaves are re-entered as well as the shade lines around the two leaves on the left side.

All the letters in ONE CENT are re-entered. The outside bottom oval under CENT is doubled from the 'C' of CENT up to the King's shoulder. Shade lines between 'C' of CANADA and 'O' of ONE are all doubled. Shade lines from the left of the King's beard are doubled up to the mid-nose area. The King's cloak is also re-entered. A lovely re-entry indeed.

**CANADA**

**1903-1908 KING EDWARD VII ISSUE**

Recess-printed by the American Bank Note Co., Ottawa in sheets of 200 in two panes of 100 or 400 in four panes of 100 (Plates 53 to 86).

**ONE CENT GREEN**

(1,470,000,000 Issued)

Canadian Specialized Catalogue No. 89

**MAJOR RE-ENTRY**

(Position Unknown)



**Figure 3**

King Edward V11 Issue 1903 - 1908 - Five Cent Blue (Fig. 4)

This is a lovely example of a misplaced re-entry. Starting at the left side there are two lines in the margin on the left of the left frame line even with the maple leaf. There are also several lines in the left frame.

There are also lines extending from the left crown downwards through the shade lines, the 'C' of CANADA and down into the shade lines in the oval between the 'C' and 'F'. There is doubling of the oval line top and bottom from the last 'A' of CANADA and around to the 'PO' of POSTAGE. In this same area the shade lines show up in the 'O' of POSTAGE, in the oval above the 'O' and in the margin above. Shade lines also show up in several of the letters in CANADA POSTAGE. There are extra lines in the left and right leaves. The left 5 tablet has 2 short lines below the top line of the tablet. Shade lines show up in the 'IVE' and continue into the margin area.

There is also an extra line in the bottom right frame from the oval to the middle of the right tablet. The king's cloak also shows evidence of this misplaced re-entry with two lines to the right of the collar and several extra lines in the mid area of the cloak.

KING EDWARD V11 ISSUE 1903 - 1908  
FIVE CENT BLUE - Canadian Specialized Catalogue No. 91  
(66,210,000 issued)  
MAJOR MISPLACED RE-ENTRY ( Position Unknown)



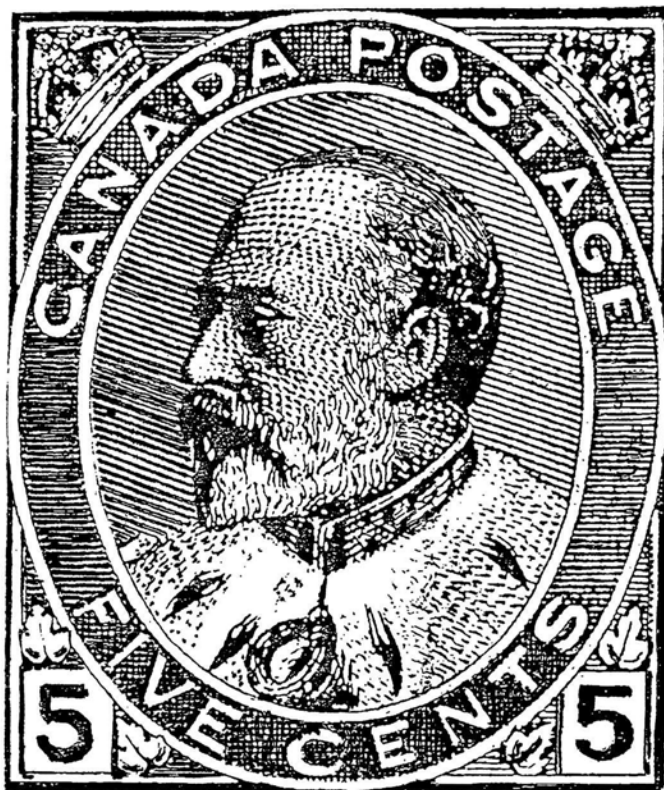
Figure 4



**VOLUME 19 NUMBER 1 JAN - FEB - MAR 2001 WHOLE NUMBER 83**

**FIVE CENT BLUE KING EDWARD V11 - Figure 5  
STRONG RE-ENTRY ( Position Unknown)**

This is a strong re-entry. The whole left side of the stamp is re-entered, except for the King's head. The heavy re-entry extends to the shade lines between 'T' and 'S' of CENTS and is evident in the two right leaves, the left tablet, right '5' and right frameline from the bottom up to a line even with the King's shoulder.



**Figure 5**

FIVE CENT BLUE KING EDWARD V11 - Figure 6  
MAJOR MISPLACED RE-ENTRY ( Position 4L27)

This strip is position 4L7, 4L17, 4L27 major, 4L37 and 4L47. Here is a nice misplaced re-entry in a strip of precancels. At the top of the stamp and running across the margin, parts of the re-entered frameline can be seen as well as part of the oval above the 'P'. Shade lines can also be seen in the frame above the left crown. The left crown has traces of re-entry.

All of the letters of 'CANADA POSTAGE' show traces of the re-entry. Especially strong is the 'O' and 'S' in POSTAGE. There are extra lines above the King's head. Extra lines extend down from the top of the King's forehead, and there is heavy doubling of shade lines extending from the hair line to the left.

The bottom part of the King's beard is doubled. There are two extra lines in the collar below the ear. There are also traces of doubling in the King's cloak. There are several dots above the left '5', two dots above the bottom curve of the '5' and a curved line running down from the top of the '5'. The 'F' 'N' and 'S' of FIVE CENTS shows re-entry as does the right maple leaf.

There is an upside-down 'L'-like re-entry from the top of the right FIVE as well as four small dots in the right tablet. The right frameline has an extra line even with the King's shoulder. 4L7, the top stamp and 4L47 bottom stamp are also re-entered but not as extensively.



Figure 6

**VOLUME 19 NUMBER 1 JAN - FEB - MAR 2001 WHOLE NUMBER 83**

The following article was sent to us from Bob Tomlinson of Osoyoos, B.C..

**Plate Position A 91 of the 3d Beaver - Figure 7**

Plate position A 91 of the 3d Beaver shows pronounced doubling of upper left outer frame, doubling of upper left 3, a fine line between frames above lower right 3 and traces of colour in the other 3s. There are very obvious extra colour dots in "EE PENC"



Thanks Bob.

The next article is from Harry Voss. Does anyone have a similar or close re-entry in their collection, if so please let me know.

By the way congratulations to Harry for a wonderful five frame display. Harry exhibited at the Edmonton Spring National Stamp Show at the end of March. The exhibit was titled "Canadian Re-entries 1852 - 1953". The exhibit contained many major re-entries, two 5 on 6 cents small queens and leaf issue proof with fresh and initial re-entries.



## 6c LARGE QUEEN MISPLACED ENTRY

BY HARRY VOSS



In the white margin to the right of "E" in postage are 6 short lines. 1mm lower are another two short lines one being darker and oval shaped.

To the bottom right of "6" are a number of short faint lines and four a bit longer and darker. A few very small faint lines do not show in the scan.

Above and to the left of the Queens eye are several lines or marks, below the eye are two marks. The chin has two 1mm lines, to the right of these lines are a number of marks angling

down to the white portrait frame. There is a short line in the circle and into the ornament.

A line in the upper ball of the "6" does not show in the scan.

The oval mark right of the "E" of postage seems to match up with the center pearl of the tiara and the darker lines right of the "6" seem to match up with the bottom of the inner and outer lines of the portrait frame circle. The marks on the Queens face and below the face could be from the hair.

This would make it a 10mm misplaced entry.

**VOLUME 19 NUMBER 1 JAN - FEB - MAR 2001 WHOLE NUMBER 83**

We need articles! It would be great to hear from members along with a write up about their favorite re-entry find or question that perhaps a reader may be able to answer.

Dues are \$10.00 and are past due for 2001. If you haven't sent your dues in please do so. Thanks.

All correspondence should be sent to:

Hal Kellett  
231 Briarvale Bay  
Saskatoon, Sask.  
S7V 1B8

Ph. 306 - 374 - 4282  
e-mail - [hkstampsandcovers@home.com](mailto:hkstampsandcovers@home.com)

Dues, address changes to:

John Jamieson  
Box 1870  
Saskatoon, Sask.  
S7K 3S2

Ph. 306 - 931 - 6633  
Fax: 306 - 975 - 3728  
e-mail - [ssc@sk.sympatico.ca](mailto:ssc@sk.sympatico.ca)