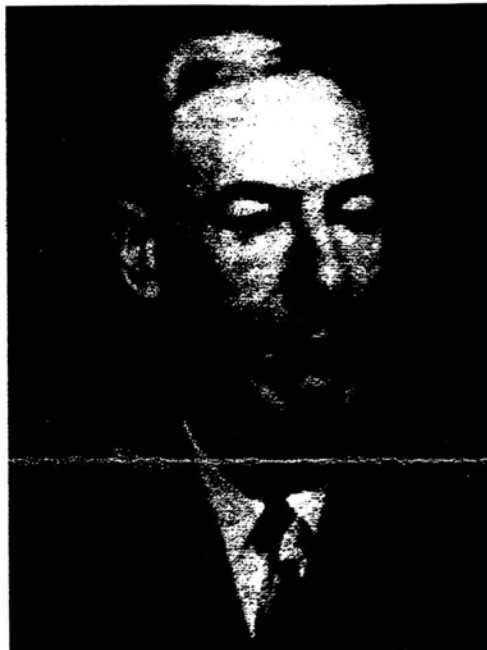


VOLUME 19 NUMBER 4 OCT - NOV - DEC 2000 WHOLE NUMBER 82

# NEWSLETTER

CANADIAN RE-ENTRY STUDY GROUP



**Hans Reiche 1914 - 2000**

We lost Hans Reiche this past September 29th. I am still in shock. He apparently suffered from cancer and developed pneumonia following surgery. He fought a long hard battle, but the disease had taken a terrible toll on him and it finally won out over our dear friend.

Hans's name is synonymous with constant plate varieties and re-entries. He was The Dean of Canadian Varieties, as evidenced by his many books and multitudinous articles on the subject. Indeed, for many of us, our first encounters with varieties on our postage stamps came from reading of them in articles by Hans in either BNA Topics, Maple Leaves, or The Canadian Philatelist. For those of us whose interest had been forever captured, this naturally led us to one of his many books. One may have been his early work, Canadian Major and Minor Varieties, later updated as, Canada: Catalogue of Constant Plate Varieties (which was Volume 7 of Billig's Specialized Catalogues). This was

## VOLUME 19 NUMBER 4 OCT - NOV - DEC 2000 WHOLE NUMBER 82

further updated and greatly expanded in 1982 in, Canada: Steel Engraved Constant Plate Varieties. Before that though we had his 1961 work: Constant Plate Varieties of the Canada Small Queens, later reprinted by BNAPS in 1981 and then completely revised and greatly improved with Mike Sendbuehler in 1991. Of course we also had his two volume work Canada: The Admiral Stamps of 1911 to 1925 (1965) along with Canadian Stamp Varieties 1973; A Large Queel's Report (1977); and The Canadian Postage Due Stamps (1985) with Andrew Chung. Hans also published numerous small handbooks, which include titles such as: Admiral Cancels; Admiral Colour Identification; The Canadian Admiral Lathework Design; Canada: The Admiral Flaws; and the Canadian Admiral Stamps: A Complete Annotated Reference Guide 1990. Han's last major work, completed in collaboration with Mike Sendbuehler and edited by the late Bill MacDonald, was his most ambitious and extensive to date: The Canada Queen Victoria 1898 Numeral Issue (1998). But that's hardly the end of it! The first two volumes of Cimon Morin's Canadian Philately Bibliography and Index list some 72 references to articles and books by Hans and Lord knows how many have been added since 1983 in the recent third volume, which I don't yet have. My point is that those of us in the re-entry and variety fields owe such an incredible debt to Hans for his work in these areas! How many of us would be where we are in philately today were it not for Hans? I know I wouldn't!

Hans was a personal friend of mine and I shall miss him terribly. Back in 1981 when I first decided to found The Canadian Re-entry Study Group of BNAPS I wrote to Hans to bounce the idea off him and he immediately wrote back in complete support, becoming member number 2 after myself. This was the beginning of a long and wonderful friendship. We would often exchange letters sometimes on a weekly basis, as fast as Canada Post could carry them. I would never know what to expect in the next letter, whether it was an article for the Newsletter or a batch of re-entries for my collection. We held long on-going discussions about printing methods, plate flaws and whatever else came up. The subject of the latent Entries on the two cent Small Queen was a favorite of ours to banter back and forth. During the 16 years I led the group Hans was always there for me with articles, letters, stamps to examine, opinions and so forth. And always in the kindest, most gentle manner. Over the years I'm pleased to say we met numerous times, both here and in Ottawa. When attending stamps shows here in the Toronto area, Hans and I would meet at his hotel to talk re-entries and share new finds. If I had hauled along my macro photo equipment we would chat while I snapped away and took notes about his finds. Those were such fun times!

BNA Topics ran a sketch and photo of Hans back in December 1967 which gave a little detail about his background and other interests. (One intriguing fact is that Han's father had been a pupil of Einstein!) Rather than repeat everything here I would be happy to scan the page from Topics and either e-mail it or snail mail it to anyone who would like to have it. (It is only about one column long, plus the photo, so it would be a short transfer by Internet.)

My memories of Hans are all wonderful ones. He was a true gentleman and a philatelic scholar. I'm proud to call him my mentor. I'll miss you Hans. We'll all miss you.

Until we meet again my friend.

Sincerely

Ralph Trimble

6c LARGE QUEEN MISPLACED ENTRY

BY HARRY VOSS



In the white margin to the right of "E" in postage are 6 short lines. 1mm lower are another two short lines one being darker and oval shaped.

To the bottom right of "6" are a number of short faint lines and four a bit longer and darker. A few very small faint lines do not show in the scan.

Above and to the left of the Queens eye are several lines or marks, below the eye are two marks. The chin has two 1mm lines, to the right of these lines are a number of marks angling

down to the white portrait frame. There is a short line in the circle and into the ornament.

A line in the upper ball of the "6" does not show in the scan.

The oval mark right of the "E" of postage seems to match up with the center pearl of the tiara and the darker lines right of the "6" seem to match up with the bottom of the inner and outer lines of the portrait frame circle. The marks on the Queens face and below the face could be from the hair.

This would make it a 10mm misplaced entry.

I received this article from Hans Reiche on the 1 cent Admiral some time ago and am including it in this issue.

## **The 1 Cent Yellow Major Re-entry**

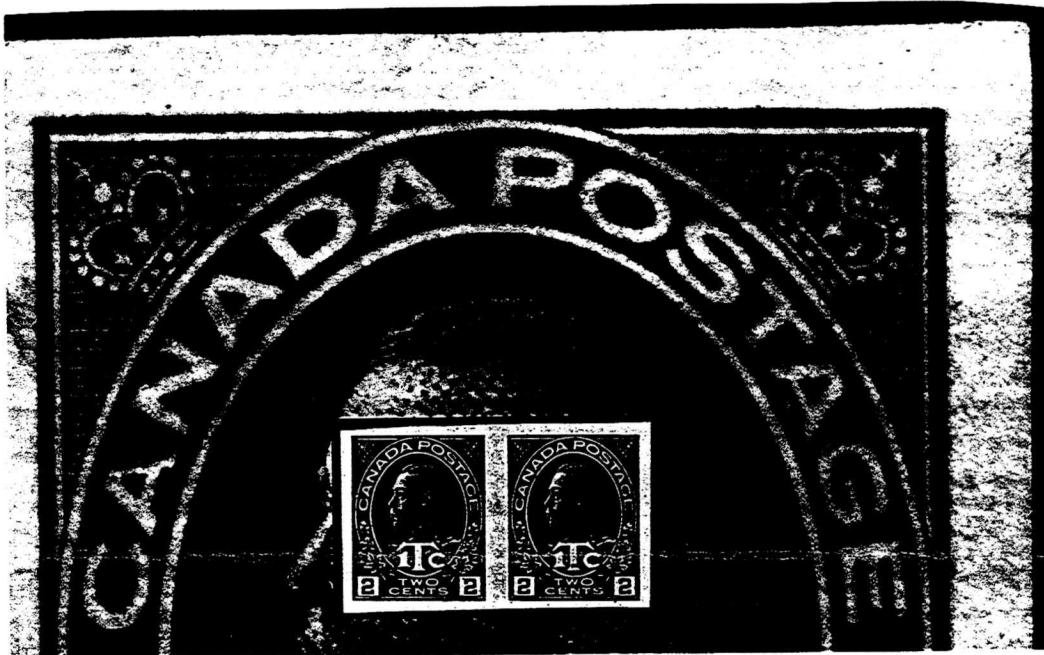
**Hans Reiche**

It is fairly certain that this major re-entry is still sleeping in some collections. The yellow shade is very hard on the eye and any varieties are often overlooked. The yellow stamps have just a few re-entries but this one is a very nice one. The re-entry comes from an orange yellow shade indicating that this comes from a wet printing and from the Die 1. The doubling is somewhat fuzzy due to the yellow ink and may appear as a kiss print which it is not. The illustration shows the extent of the doubling at the bottom of the design. Marler lists a number of minor re-entries of the bottom line but not this major one.



## **The Admiral 2 Cent + 1 Cent Dark Brown C.S.MR4**

Here is a nice re-entry on a lovely rare die 11 imperforate pair of the MR4 Admiral War tax stamp. The re-entry is in and under "AN" of CANADA and in "G" of Postage. Thanks to John Jamieson for this.



**The Admiral one Cent Major RE-ENTRY C.S.104vii**

**Precanceled**

This is a beautiful copy of the one cent Admiral Major re-entry precanceled!  
I wonder how many other re-entries are lurking out there in personal collections? Again,  
thanks to John Jamieson.



### **Five Cent Beaver C.S. #15**

**Chester C. Soule**

The following article was submitted By Chester C. Soule who has been collecting Canadian stamps since high school and since 1949 has been interested in the five cent beaver including its various re-entries. He has used the work of Boggs, Coulter and Whitworth as his guide. Since Mr. Soule's retirement in 1987 he has devoted his collecting experience exclusively to the five cent beaver.

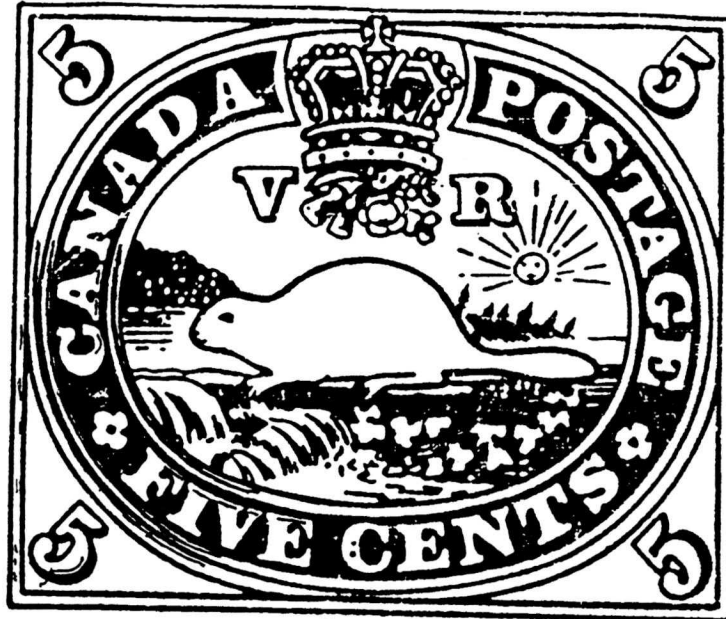


FIG. 1

### Figure #1

Figure #1 comes from a cover (from Chambly July 1, 1864) I purchased in May 1987 and has intense re-entries in the lower left quadrant; the left frame line starting from the "C" of CANADA and running down to the bottom of the numeral "5". A line in the curve of the "%" and a short curved line at the bottom of the "5".

The outer oval is re-entered from the "N" of Canada to the "V" of "FIVE". There is also a line in the middle oval, running approximately parallel to the line in the outer oval. The "A" and "C" of "CANADA" are re-entered as is the top of all letters of the "FIVE".. The inner oval is re-entered and runs parallel to the lines in the other two ovals.

After finding there was no Whitworth re-entry to correspond I sent a diagram to Jeffrey Whitworth and promptly received a reply that it must be a fake. However, with the assistance of Alex Hutton and his technical resources, we supplied Mr. Whitworth with a highly magnified colour photograph showing conclusively that the re-entry features and the normal features were of the identical ink and textures. After this review he wrote me that this was in fact a re-entry.

The location of the "C" dots indicated that it had to be position 38 and the date indicated it as state 4, 11 3/4 x 12.

During 1999 responding to a Canadian auction describing a five cent beaver unused with re-entry, I purchased it, and on its arrival I determined that it was in fact a later state of the re-entry that I acquired in May 1987. My purchase of 1999 is illustrated by figure 1A and is state 5, though a slightly reduced re-entry which would be common with later states.

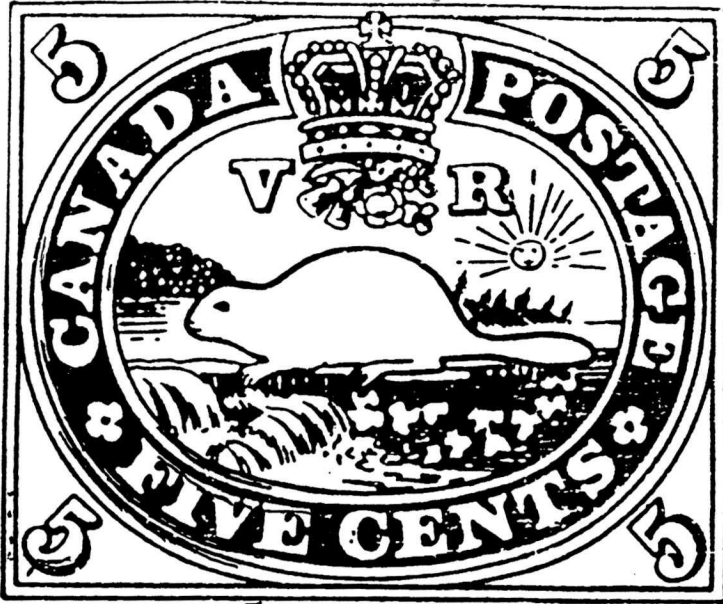


FIG 1A

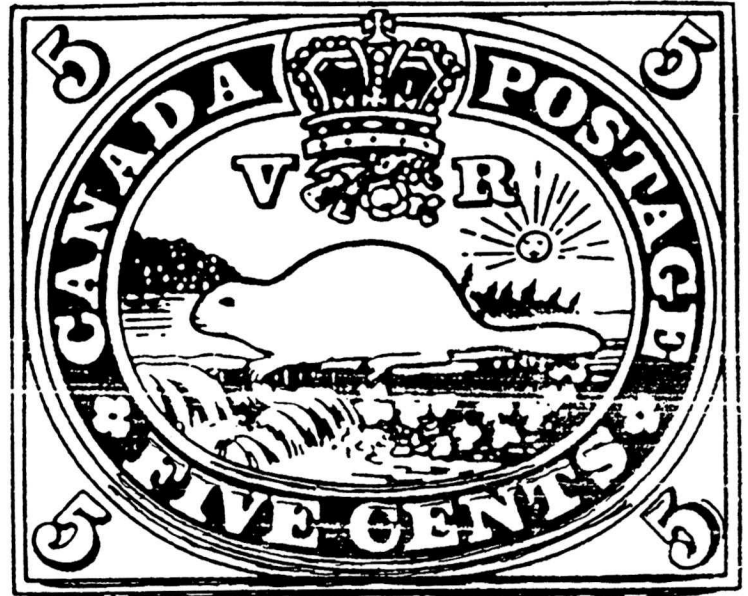


FIG 2

Figure 1A

Figure 2

Figure 2 again represents an intense re-entry that I purchased at a Toronto auction while I was there (without my reference data). I thought it would be part of the figure (1) re-entry, however on getting it back home I determined that again it was a different re-entry. It was the same intensity but in a different location. The outside oval is re-entered from the "F" of Five around to the "S" of CENTS. The middle oval is re-entered in the same position as the outside oval. "FIVE CENTS" is re-entered along the top of the letters. The inside oval has a line running from the "I" of FIVE to the "T" of CENTS. The right five is re-entered along the top and a line runs along the right side of the right curve. Subsequently I did get a Vincent Green certificate that it was in fact a true re-entry.

I would request any members who might have a re-entry of this type (Fig. 2) to contact me to see if there might be some features on the stamp which could be identifiable. In addition I would be very interested in contacting any of the study group members who are interested in the re-entry's of the beavers particularly the five cent beaver. I am



**VOLUME 19 NUMBER 4 OCT - NOV - DEC 2000 WHOLE NUMBER 82**

convinced despite the fact the five cent beaver has been studied for over 75 years by many great philatelists there is still much new information that can be attained as noted by these two unrecorded entries.

I will be more than interested in being contacted by any members that would be interested in pursuing this matter, particularly in view of the fact that I do not have many re-entries of both the three pence and the five cent beaver that show features not yet recorded.

Chester C. Soule can be reached at:  
P.O. Box 663,  
Peterborough, N.H.  
03458  
Phone (603)924 - 3126.

Thanks to Harry Voss and Chester C. Soule for their excellent articles that appear in this issue. Also thanks to John Jamieson for supplying us with photos of some nice re-entries.

A reminder that it is time to pay our dues for the year 2001 - they are still \$10.00

**I would like to wish everyone a Merry Christmas and all the best in the New Year.**

All correspondence should be sent to:

Hal Kellett  
619 Blackshire Cr.  
Saskatoon, Sask.  
S7V 1B4  
Ph. 306 - 374 - 4282  
e-mail - [hkstampsandcovers@home.com](mailto:hkstampsandcovers@home.com)

Dues, address changes to:

John Jamieson  
Box 1870  
Saskatoon, Sask.  
S7K 3S2  
Ph. 306 - 931 - 6633  
Fax: 306 - 975 - 3728  
e-mail - [ssc@sk.sympatico.ca](mailto:ssc@sk.sympatico.ca)