

NEWSLETTER

CANADIAN RE-ENTRY STUDY GROUP

Well, this will be the last Newsletter of our re-entry study group for this century! I'm sure most of us are looking forward to the new millenium and I for one am keeping my fingers crossed that everything goes well with the changeover at midnight January 1st 2000.

Canada Post has issued 3 stamps to commemorate the occasion. The 95 cent Dove stamp is beautifully engraved. Is there a possibility of some re-entries being found on this stamp? It comes in a sheet of four, and can only be purchased in this format. There is also a millenium keepsake souvenir package containing the 95 cent stamp in a single sheet format.

Hans Reiche has been good enough to provide our newsletter with the following material concerning the .5 cent Admiral #111, Plate 8 No. 5 U.L.

Plate 8 No. 5 U.L.

One of the two recorded varieties.

One was once in the G. Marler collection



The 5 Cents Major Re-entry-Admiral

I believe that this interesting variety has not yet been reported in detail in this paper. As far as we know only two copies have been reported. One copy was in the collection by Marler, the other one, a used copy, came from a R. A. Lee Auction but the possibility exists that others not yet recognized are hiding in collections.

G.C. Marler describes this re-entry as follows: "The most spectacular subject, one which combines a re-entry and a re-touch, 8 UL5 (shown on page one). In it there is doubling of Canada Postage and of the top lines in the upper right, with marks inside the oval band at left center and below Canada Post; Inside the left side of the frame a line has been added extending from line three in the upper left to the sixth line above the left numeral box; the vertical line in the upper right and the upper right frame junction line have been re-touched as have also the oval line and part of the vertical line in the lower right."

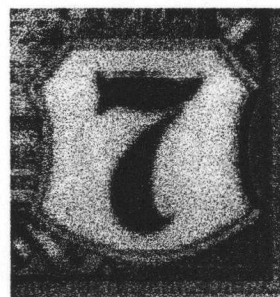
Not described by Marler are the doubling of the upper right corner; the right frame line above E down to the second leaf; a mark in the oval below the chest. There are various dots all over the design.

Although the well known one cent major re-entry is listed by most catalogues this one for some reason is not listed. Hopefully other copies will be found to compare notes.

Thanks very much Hans, your information is greatly appreciated!

Re-Entry on the C 9 Air Mail Stamp

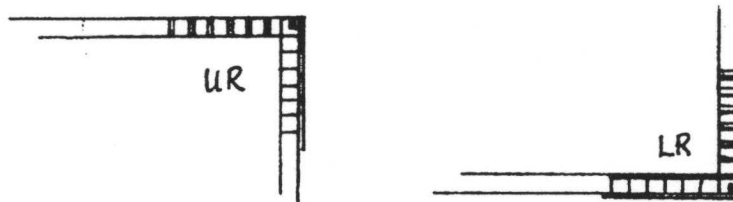
We have an article sent in by Donald Krause concerning the C9 Air Mail stamps. This is quite co-incidental as I have recently purchased a used UR corner block of C9 with the re-entered right frame line in positions ten and twenty. As well the right 7 frame line is doubled on the right side of the frame, on both positions ten and twenty.



Here is the article by Don Krause: Recently the re-entries on the C9 Air Mail has drawn my attention. It follows that the same re-entries can be found on the Officials CO1 and CO2. There are three categories of the re-entry: right side only, left side only, and both sides which make for a total of nine collectible varieties. The common re-entry on these stamps (mostly from Plate #2) shows horizontal displacement, that is the left and/or right frame lines are doubled.

Last week I acquired a C9 mint plate block of Plate #1, lower left (positions 41,42,46,47). In position 41 there is a re-entry that is different. The upper right corner shows the common horizontal displacement but the lower right corner is displaced vertically, which makes this a unique "twisted" re-entry. Both displacements are sharp and distinct. After careful examination of my other re-entries, I also found a used copy showing the same skewed re-entry.

Although not drawn in complete detail, the following will help illustrate this variety:



The lower left corner of this stamp shows a very faint minor horizontal displacement.

Now I need this same re-entry on the CO1 and CO2. Who can help complete my collection? Anybody find an extra?

Donald L. Krause
4501 Bali Court, N.E.
Albuquerque, NM 87111

Phone: (505) 294-0247

A big thank you to Don for this article. Looks as though this can be an interesting study.

To continue with the re-entries of the stamps of Newfoundland, here is another re-entry of #39/the 3 Cent Blue in the 1865 Decimal Currency Issue/The New York Printings 1865/1879.

These were recess-printed by The National Bank Note Company of New York in sheets of 100/10x10. Issued numbers unknown. The position of this re-entry is unknown. There is a re-entry all along the top of the bottom THREE and the top of C of CENTS. The bottom left star is re-entered, as is the scroll work at the bottom left to the center of the stamp.

This re-entry is similar to the re-entry described in our last issue, except the top of the stamp is void of any re-entries.



Next is the only reported re-entry on Newfoundland #105/ the Two Cent King George V, Royal Family issued June 19, 1911. The stamp was engraved and printed by De la Rue and Co. in sheets of 100/10x10. There were 26,065,500 printed.

The King's Crown is extensively re-entered as well as the leaf design to the right of the crown. There are also extensive re-entries to the shading lines, starting above the first pair of leaves, and continuing down the right side of the stamp, stopping just above "E" of "POSTAGE".

Thanks to Harry Voss of Saskatoon for the next article on Scott #19-the 17 Cent Decimal.



Position 9



Position 17



RE-ENTRY ON THE 17c DECIMAL

The above two (Scott # 19) re-entries are almost the same. The position dot in the left ornament places them into different plate positions. Position 17 also has a short guide line east and west of the ornament and has the travelling dot to the front of Cartier's nose, position 9 does not have a travelling dot. Position 17 has a short dash west of the left 8 between the frame lines also has a very faint short entry below the left 17.

Position 9-Slight doubling of the lower portrait oval above E,V,N of seventeen, E,N of cents. Slight doubling of the upper curve of S of seventeen also the tops of the T,E,N, very slightly the bottom of EE. The left leg of N in cents and the tops of the E,N and S. The bottom of the left 7 also slightly on the right 7.

Position 17- Slight doubling of the lower portrait oval above E,V,N of seventeen, E,N of cents. Slight doubling of the upper curve of S of seventeen also the tops of T,E,N, very slightly the bottom of EE. The left leg of N in cents and the tops of C,E,N and S. The bottom of the left 7 also slightly on the right 7. The left sides of O,S of postage.

Many thanks to Hans, Don and Harry for their help in supplying information and adding to our knowledge of re-entries of Canada's Stamps.

To the members of our study group, I need your input in the form of articles, new discoveries, something you would like to see included in a future issue, or basically anything you feel would be of interest.

Dues in the amount of \$10.00 per year are once again payable and should be forwarded along with any changes of address to:

John Jamieson
Box. 1870
Saskatoon, Sask.

(306) 931-6633
Fax: (306) 975-3728
ssc@sk.sympatico.ca

Send all correspondence to:

H.F. Kellett
619 Blackshire Cres.
Saskatoon, Sask. S7V 1B4

(306) 374-4282
hkstampsandcovers@home.com

As you may or may not know John Jamieson of the Saskatoon Stamp Center has been good enough to let him use his office facilities to set up and run off copies of the newsletter. As well, Don Williams of Saskatoon has been extremely in offering his assistance.

So, on behalf John, Don and myself may I wish all of you a very Merry Christmas and Happy New Year. May our problems only be the perforated kind!

