

NEWSLETTER

CANADIAN
RE-ENTRY
STUDY GROUP

"Strong" Re-Entry On 10p Pence Issue Scott No. 7iv

Here is the re-entry on Position No. 53 of this stamp, courtesy of John Jamieson of Saskatoon Stamp Centre.

Along with Positions 1 and 90, this beautiful re-entry is classed as "strong" but if these three re-entries were on any other issue they would be called majors. This re-entry certainly looks like a major one.

The lines on this actual copy of the re-entry have been strengthened for clarity.

The re-entry is to the right and affects the two 10cy's on the bottom and the top right 8d. stg., as well as "Canada Postage" and "Ten Cents".



LATE . . . Had hoped to get this Newsletter out a month early, but went on holiday to Ontario, and managed to get very sick. Hopefully we are back on track again, and will be able to finish without any further interruptions.

We could still use articles and any re-entries found.

Send along what you think may be of interest to our members and we will be pleased to print these for you.

Plate Position 47, A Pane--THE MAJOR RE-ENTRY

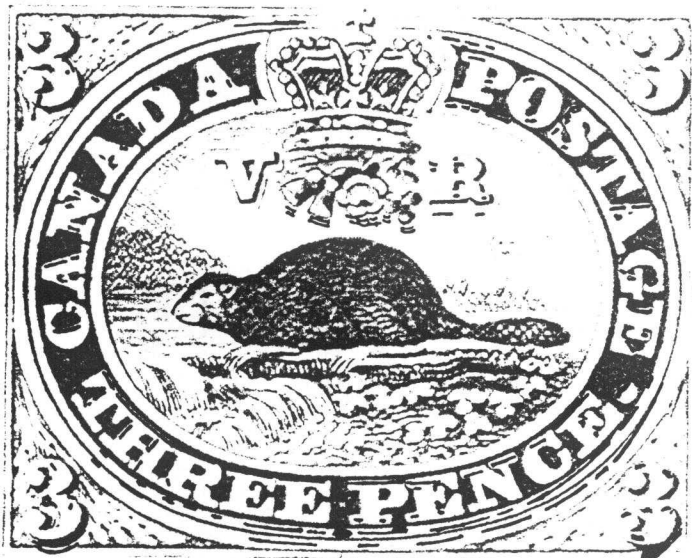
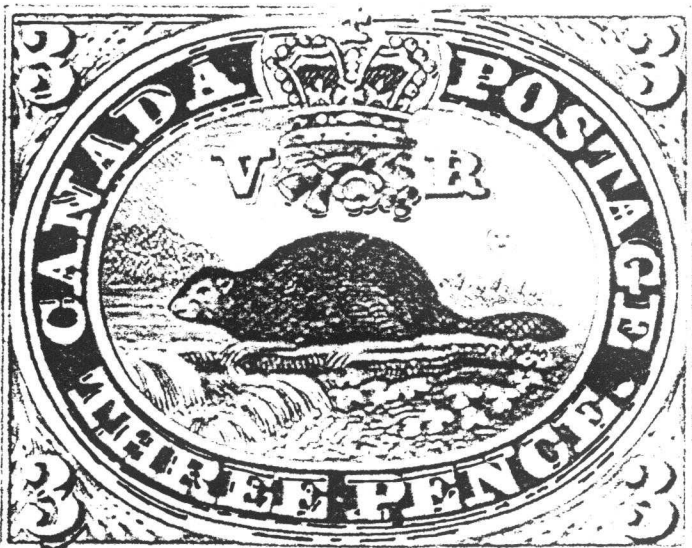


Plate Position 80, A Pane



VOLUME 16, NUMBER 2

WHOLE NUMBER 76

MARCH - APRIL - MAY 1998

NEWSLETTER

CANADIAN RE-ENTRY
STUDY GROUP

The Three Major Re-Entries On Scott #1

Ralph has shown us a picture of the Major Re-entry 47A on the 3d Beaver in Volume 3, Number 2, page 13 of his Newsletters.

This major and another, 34A, are listed in Canada Specialized but not listed is another re-entry which is as nice as these two but is not listed with the above.

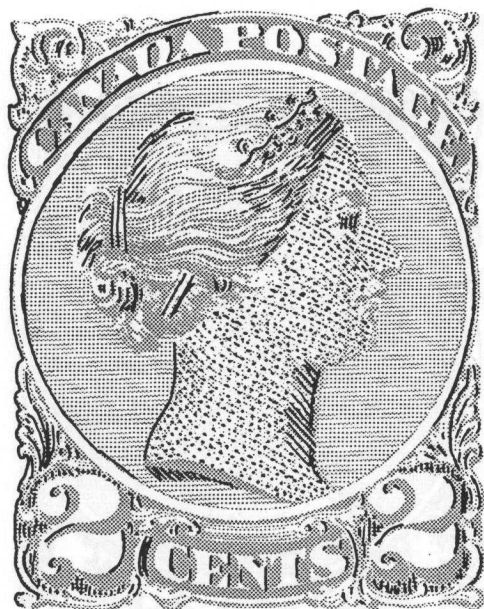
Not nearly as much has been written on the third, 80A, although it is mentioned by both Jarrett and Boggs, and is in the same class as the other two. It does resemble them, with the strong re-entry lines in THREE CENTS and the strong downward shift to the left 3. The big difference 80A has from the first two is the two figure 3's on the right have no re-entry of any description, and there is a line across the top left just below the frame line that just cuts the top of the top left three.

All letters in CANADA POSTAGE are affected on all three of the re-entries, and A80 might be mistaken for A34 because of the similarity of the re-entry in CANADA POSTAGE and the doubled lines under THREE CENTS.

So 47A is THE Major, and the other two are classed as Majors. The three really do make a very nice showing of the classic early Canadian re-entries.

A STUDY GROUP OF THE BRITISH NORTH
AMERICA PHILATELIC SOCIETY

PAGE 8

SMALL QUEEN CORNER--2c

Above is a 2c Ottawa Printing not mentioned by Reiche & Sendbuehler in "Constant Plate Varieties Of The Canada Small Queens".

It is re-entered completely across the stamp to the left with lines that are vertical or slightly off vertical doubled. The inner and outer frame lines are almost completely re-entered. Even the lines in the Queen's eye are doubled; In fact, there is so much of this stamp re-entered the portrait of the Queen is actually green. There is no recognizable date on this stamp.

NUMERAL CORNER--1c

As Messrs. Reiche and Sendbuehler said in *The Canada Queen Victoria 1898 Issue*: "The listing should not be taken as final. Many others (re-entries) may still await finding and listing in the future".

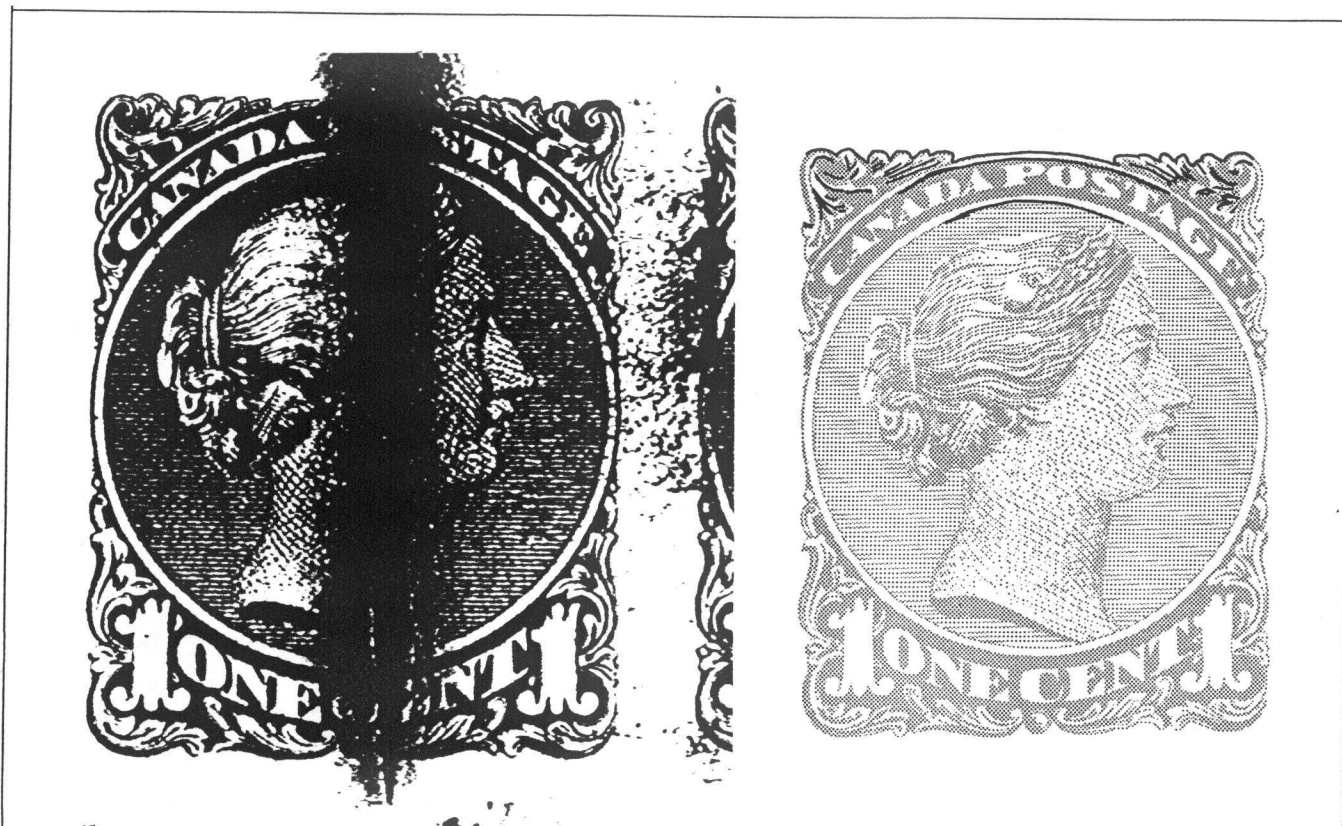
Here is one that would seem to fit this description. It is a nice counter-clockwise twisted re-entry, and slightly misplaced.

The left "1" doubling has a portion of the figure protruding down from the bottom right, making it similar to Figure 2.50 of the 2c Numeral misplaced re-entry, although not as strong.



Send dues, change of address, etc., to:

John Jamieson,
Box 1870,
Saskatoon, SK S7K 3S2
Fax: (306) 975-3724



RE-ENTRIES FOUND ON SCARRED PLATE

Shown above is Position 99 from the Right pane of Plate 1.

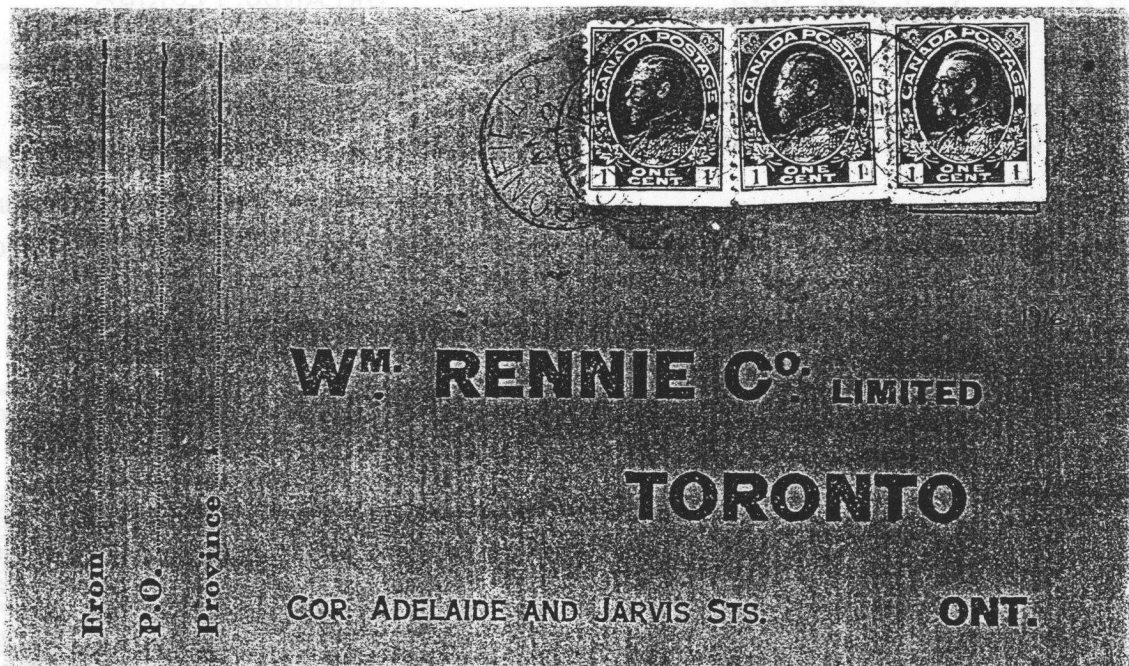
This stamp comes from a full black imperforate pane with each of the ten vertical rows scarred with this deep gouge. The pane of 100--10x10 has a great deal of "splattering" of the ink over most of the stamps, as can be seen on the adjacent part of the next stamp.

There is also a very minor re-entry on Position 98 affecting the top frame line on the left side of the stamp, and would not be identifiable unless found in conjunction with the above re-entry.

These re-entries are not mentioned in *"Constant Plate Varieties of The Canada Small Queens"* by Reiche and Sendbuehler. Position 99 is distinctive enough to be identified when alone.

Examination of the pane courtesy of John Jamieson of Saskatoon Stamp Centre.

THREE RE-ENTRIES ON BOOKLET PANE 104a



Here is a cover with three 1c Admirals that apparently have been used twice. The stamps on this cover have paper adhering to the edges of each stamp, and are barely attached to the cover. They appear to have been taken from another cover and re-used.

They are from a booklet pane, Group III, plates 17 or 18.

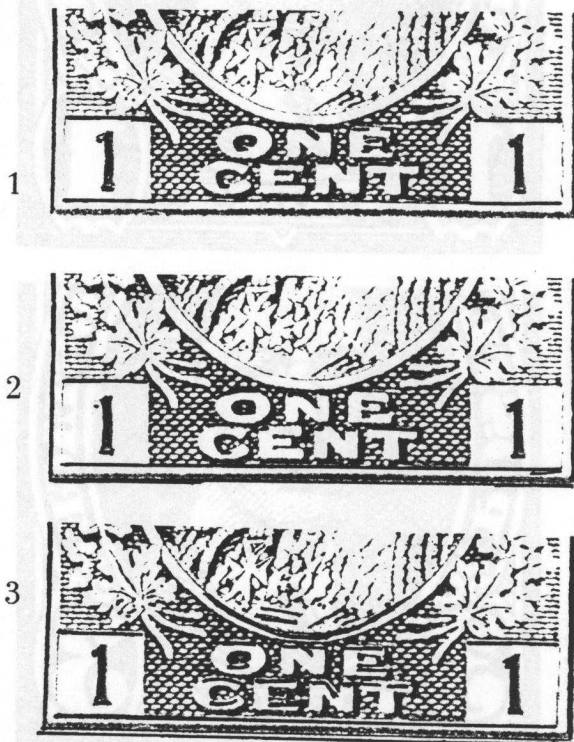
The re-entries on these three stamps were not reported by Marler but were made after the plates were proofed; Marler reported only on the proofs.

These stamps were mounted on some other paper attached to each other and removed and remounted again on this cover. The stamps must have been torn from each other and singly mounted again. The order on the cover is 1-3-2 if the three were attached; hairlines in the margins matching proves this, although they may not be in the right sequence.

In any event, these three are the lower strip of a booklet pane of six. The cover is a front-only from Bonfield, Ontario dated May 19, 1916.

Thanks to Hans Reiche for supplying the data for this cover.

The numbered tracings are the order of the stamps on the cover.



Two Minor Re-Entries
 on 1937 George No.'s 231, 233

Below are two very minor re-entries which occur on both stamps in the same location: Across the bottom inner frame line under "CENTS".

There seems to be no scarcity of these two minor re-entries. Some 5-6 of each were picked out of 200 copies of each.



BNAPEX '98

ORLANDO, FLORIDA

October 8, 9 and 10

MEMBERSHIP UPDATE

To date we have a membership of 86 paid-up, with several more pending. This is encouraging, considering there were some 75 when the "change over" was made to the present. This is due to the work of John Jamieson.

MINOR TO C9--Bottom lower left frame line



This re-entry is much the same as the two opposite Georges. Runs to under the "N" of CENTS.