

RECEIVED AUG 29 1994

Canadian Re-entry Study Group

Ralph E. Trimble
Box 26556, Markville P.O.
Markham, Ontario
CANADA L3R 0M4

BNAPS PSSC CC RPSC PHSC CPSGB
APS APRL APES WU30 EFOCC

Whole No. 65

MAY — AUGUST 1994

Vol. 13, No. 3

TABLE OF CONTENTS

Page 20	FURTHER COMMENTS ON "WHERE ARE ALL THE ADMIRAL RE-ENTRIES?"
21	A POT OF RE-ENTRY GOLD AT THE END OF THE SMALL QUEEN RAINBOW
22	(Cont'd)
23	(Cont'd)
24	THE RE-ENTRY FROM POSITION #71 ON THE 12½¢ DECIMAL
25	ON THE ADMIRAL FRONT — A NEW RE-ENTRY ON THE 50¢ ADMIRAL
26	TWO RE-ENTRIES ON THE HALF CENT LARGE QUEEN - POSITIONS #1 & #11
27	A SHARP RE-ENTRY ON THE 2¢ SMALL QUEEN
	THE "NEW MAJOR RE-ENTRY ON THE 17¢ DECIMAL" — REVISITED
28	THE BUSINESS SIDE
	MEMBERSHIP REPORT
	ANOTHER SILVER MEDAL !!
	WANTED: MATERIAL FOR OUR NEWSLETTER (Hand-written or on disk.)
	MY APOLOGIES FOR THE INCONSISTENCIES OF THE LAST ISSUE!
	SOMETHING NEW HAS BEEN ADDED TO MY MACINTOSH !!

Canadian Re-entry Study Group

Ralph E. Trimble
Box 26556, Markville P.O.
Markham, Ontario
CANADA L3R 0M4

BNAPS PSSC CC RPSC PHSC CPSGB
APS APRL APES WU30 EFOCC

Whole No. 65

MAY — AUGUST 1994

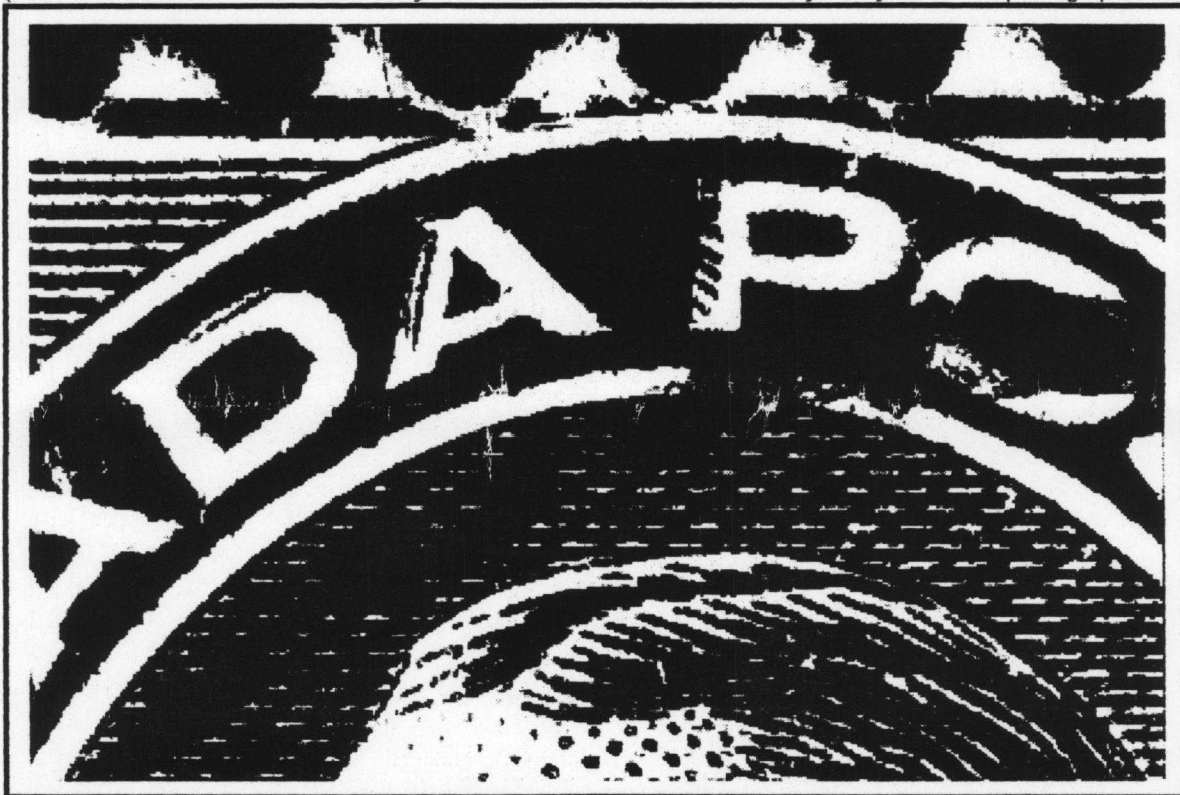
Vol. 13, No. 3

FURTHER COMMENTS ON "WHERE ARE ALL THE ADMIRAL RE-ENTRIES?"

by Hans Reiche

(This is in response to Randall Van Someren's article in the last issue.)

(Below is a beautiful 1¢ Admiral re-entry from 17LL91 that was submitted by Randy for me to photograph. R.T.)



First my congratulations on this interesting article. Having collected Admirals for many years including the re-entries, I would like to make some comments. Having looked over more than 3,500,000 of the 1 and 2 CENTS low values (plus many of the higher values as well), I must first comment on the fact that re-entries are not as common as they may appear from Marler's book. Statistics may be misleading here because we do not know the number that survived, or what the distribution and time periods are that are still in circulation. I have gone through bundles that contain no re-entries and others that had 10% of them. If the lot does not come from a certain time period the chance for finding something is limited. Marler indicates that certain plate groups have none or just a few. But in addition to this, Marler's notes were taken mainly from the plate proofs in the Canadian Postal Archives. Unfortunately, a large number of re-entries that existed on the original plates may never be located. The reason is simple. Many of the early plates were reworked twice or even three times, eliminating some of the original re-entries. But rework brought with it new varieties that are not recorded on the original plate proofs. The number of re-entries that can be found that are not on the plate proofs exceeds by far those from the original plates. In my own collection, more than 65% of all re-entries are not on the plate proofs. These are not just minor re-entries, but major and extensive ones. Of course, there are many minor re-entries, such as at the bottom frame or numeral boxes, that are very similar and common, but not easy to identify from what plate group they may come from. I have about one hundred of them. Some are similar to those listed by Marler.

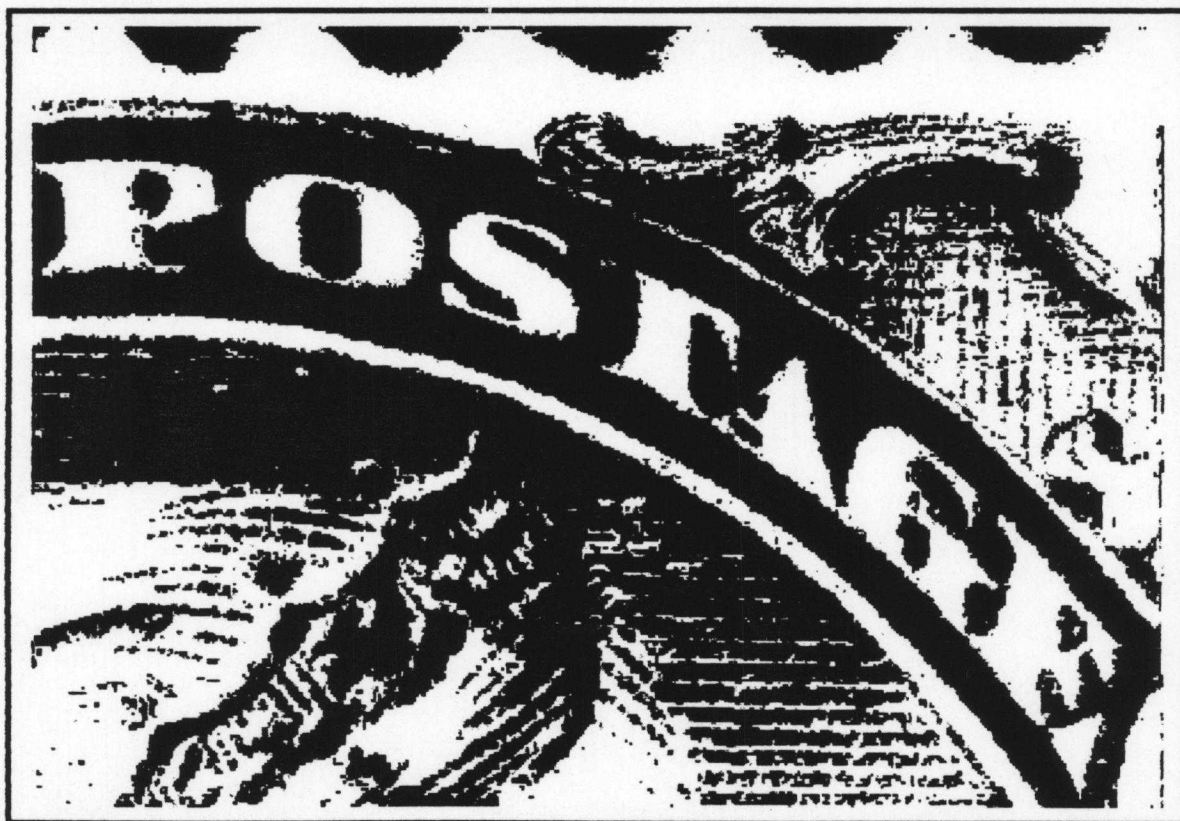
If one looks at the 3¢ carmine and the 5¢ violet, one can note a large number of minor re-entries at the bottom oval part. These may be shifted transfers, as Ralph calls them. One other fact is that much of the existing bundle material has been looked over by collectors and unsorted lots practically do not exist any more. Nevertheless, good hunting and please report your finds to Ralph. §

A Pot of Re-entry Gold at the End of the Small Queen Rainbow. by Michael Rixon

As re-entry collectors, we all spend an inordinate amount of time with loupes and magnifiers glued to our eyes, in search of that illusive stamp that's going to take our breath away. As a relative newcomer to the field, I thought it might be interesting to tell the story of my first successful hunt - and describe some of the trophies I brought home for my collection. I was sitting at a dealer's table one Sunday morning peering groggily through my loupe at his stock of Small Queens - finding an interesting cancellation here, a minor re-entry there - when he said to me, "You know, I have a big stock of the low values at home, if you like I'll bring them in and you go through them." If I'd like??? Two weeks later he plops down some 30 odd bulging glassines and says, "Have fun."

After about 6 weeks of fun, I've sorted through some six or seven thousand stamps and it's become apparent that they really are unpicked. A nice range of cancellations, dated copies, shades, papers, perfs and a host of minor re-entries. All told, I've pulled out about 400 stamps, but not a single strong or major re-entry. I'm starting to feel a little unlucky. "Can they really be that hard to find?" You have to remember I've never really done this before. Now I'm down to the last couple of hundred stamps in the final envelope. It's late, and having promised to return the material the next morning, I sit down at the light table - a little wearily I must admit - to finish them off. Five minutes later all traces of weariness are gone. Ten minutes after that even my lady friend - whose interest in Philately would fit on the head of a pin with all those proverbial dancing angels - was downstairs to see what all the commotion was about. Fifteen minutes, five really nice re-entries. If only that ratio had held through the rest of the lot! I don't think any stamps have ever been as avidly examined as the hundred or so remaining in that envelope. And even though I didn't find anything else, I felt like I had found a pot of re-entry gold at the end of the Small Queen rainbow.

The first four stamps are reminiscent of the stamp illustrated in newsletter 52, each showing a "fat O" in POSTAGE but lacking the characteristic misplaced guide dot. No. 1 (below) shows extra lines mainly in "A POST", as well as strong doubling in the UR, UL and LR corners.



No. 2 (next page) has a fatter O and is more extensively re-entered - particularly in POSTAGE. This stamp also shows doubling in all four corners, CENTS and the background shading lines at right.

(Cont'd)

A Pot of Re-entry Gold (Cont'd)



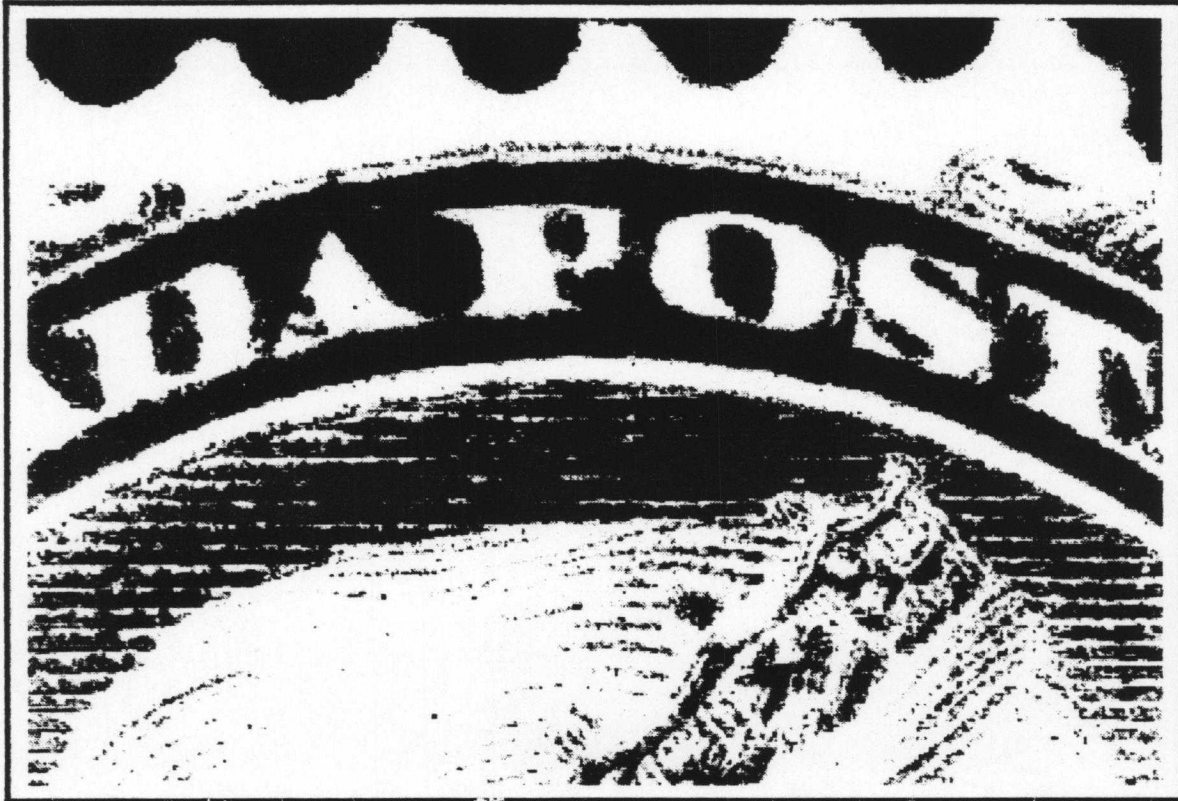
No. 3 (below) and No. 4 (next page) are the most heavily re-entered of the bunch - seemingly doubled everywhere. In these two stamps, the "Fat O" is really quite pronounced.



No. 5 is an entirely different kettle of fish. Nicely re-entered in CENTS and the right 3, part of the right oval and background shading - it's the UR corner that's really interesting. Every second time I look at this stamp I see what appears to be a second "ball" misplaced to the left. In my correspondence with Ralph, he referred to it as a "Phantom Ball", and I think we're in agreement that it's not what (Cont'd)

A Pot of Re-entry Gold (Cont'd)

it seems. Too bad though, it would have been a wonderful find. (Stamp #4 below.)



(Stamp #5 below — an extremely smudgy print.)

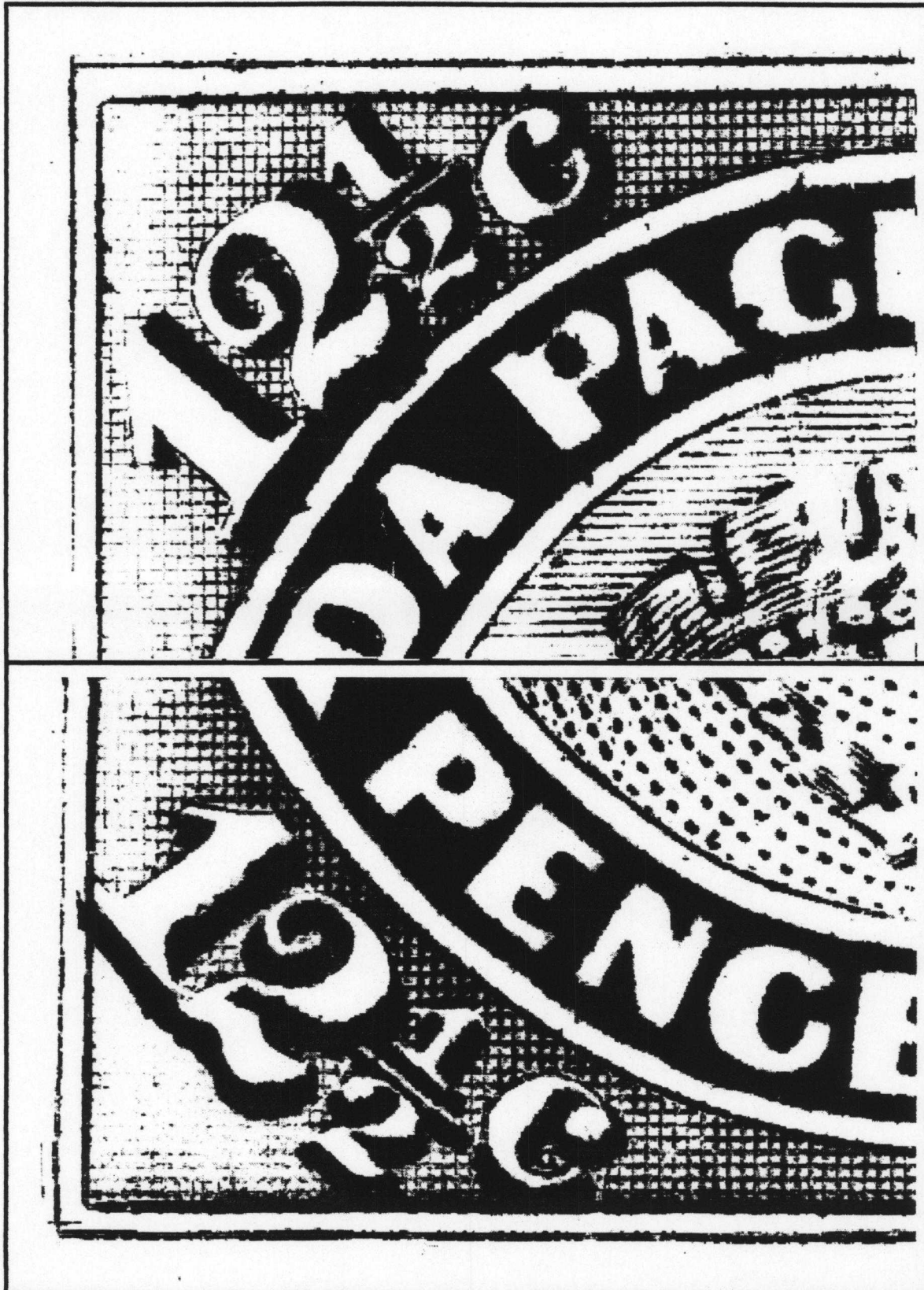


So, that's the story of my first large-scale foray into the world of Small Queen re-entries. I suspect I'll never find this many nice stamps in 15 minutes ever again. One thing I am sure of - the thrill of having done it once will stay with me forever. §

THE RE-ENTRY FROM POSITION #71 ON THE 12½¢ DECIMAL

by R. Trimble

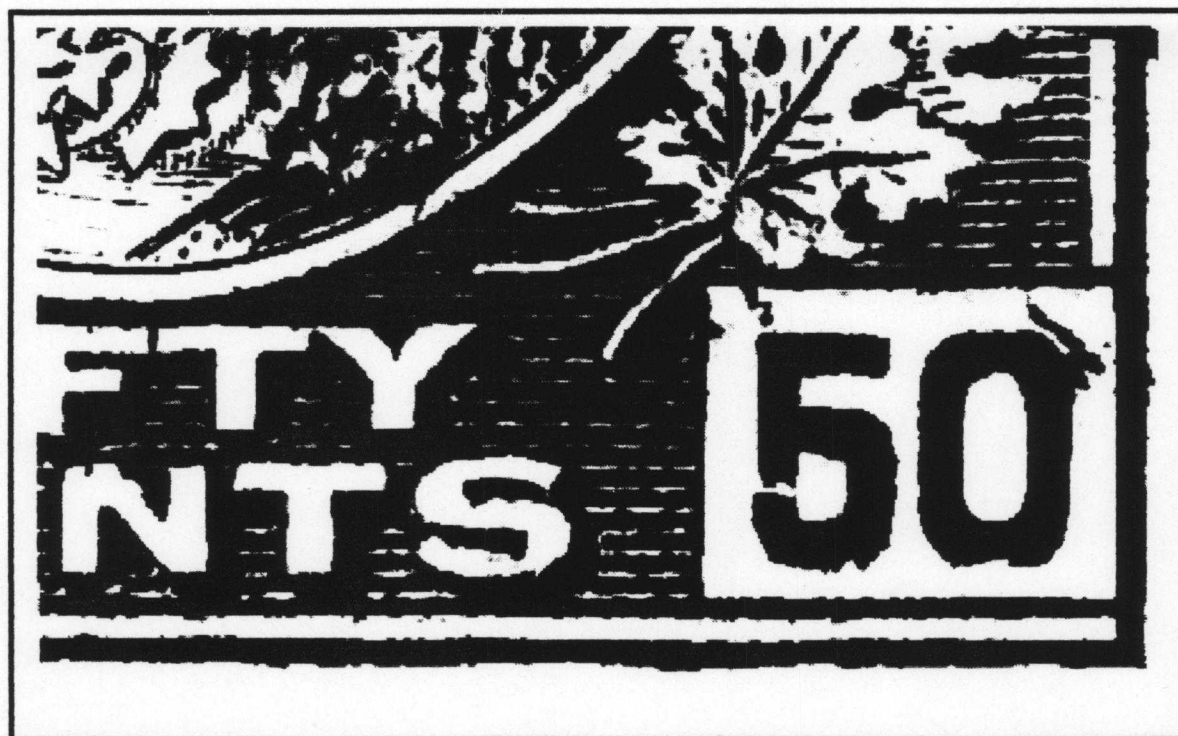
Back in Issue #62, I promised to show you some of the other, more prominent re-entries that I found on John Jamieson's proof sheet of the 12½¢ Decimal Issue. Here we see the U.L. and L.L. corners of Position #71. This re-entry is documented by Whitworth, but the doubling is more pronounced and extensive than his diagrams lead us to believe. Note the marks in and around 'PAC', the doubling of the L.L. numeral, and particularly the 'L-like' doubling in the L.L. corner.



ON THE ADMIRAL FRONT

by R. Trimble

A New Re-entry on the 50¢ Admiral



Bill MacDonald of Saskatoon is always coming up with mounds of wonderful goodies to show me, and recently in a lot he sent me was this beautiful re-entry on a 50¢ Admiral that does not fit any of the listings in Marler. This is undoubtedly the strongest re-entry I've ever seen on this particular value. Note the doubling in the tops of both numeral boxes, the bottoms of both 50's, the thickening of the bottom frame, and the lines of doubling in much of CENTS. Nice! Can anyone out there better this one? §

TWO RE-ENTRIES ON THE HALF CENT LARGE QUEEN

by R. Trimble

While there are no 'spectacular' re-entries on the Half Cent Large Queen, there are at least two that have been plated by Duckworth, both of which are shown below. The first, and strongest of the two, is from Position #1 and shows doubling of the entire U.L. corner design. The second, from Position #11 directly under the above position, is similar, but the doubling of the U.L. corner floral design is far less distinct, showing only in the very U.L. corner. A corner block would show both of these re-entries together.



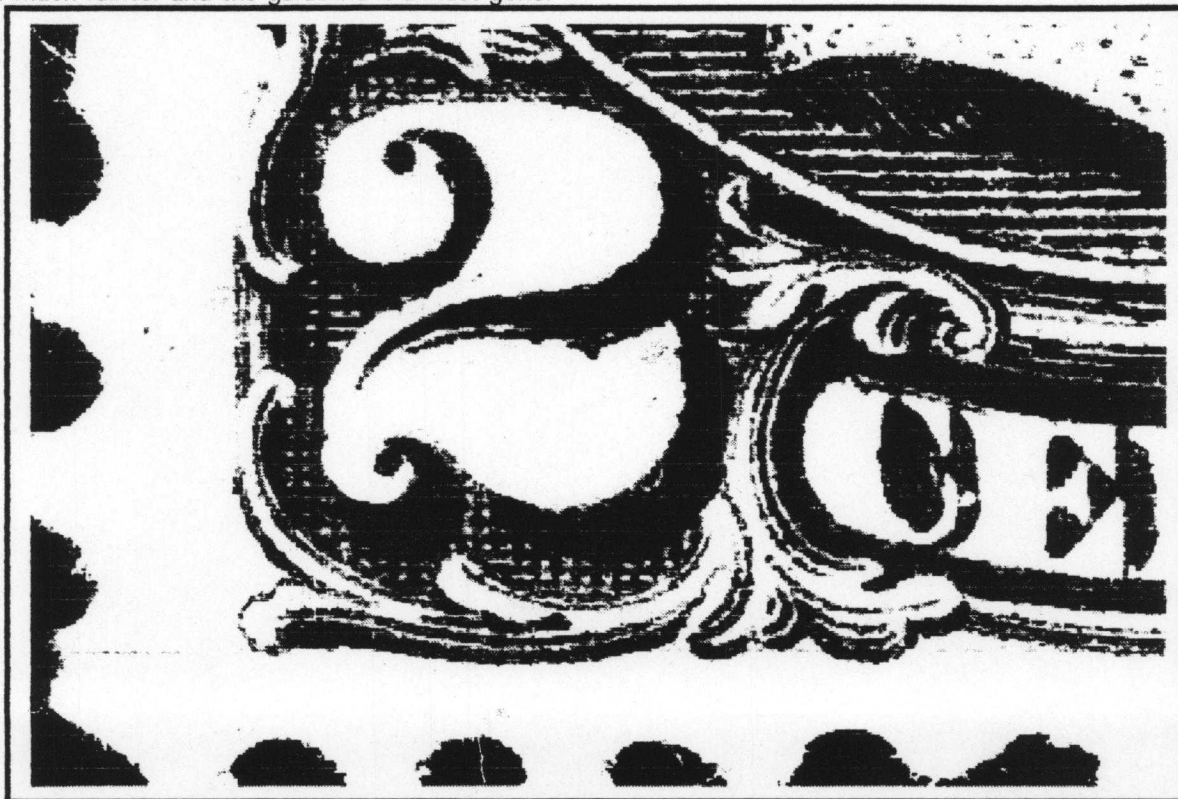
(Above, Position #1. Below, Position #11.)



A SHARP RE-ENTRY ON THE 2¢ SMALL QUEEN

by R. Trimble

Here we have a rather nice re-entry on the 2¢ S.Q. showing sharp doubling in the L.L. '2' and in the top of 'CE' of CENTS. There is also a prominent guideline extending out horizontally from the L.L. corner. This guideline also extends through the floral ornament below the 'C', where it meets the bottom of the frame below the 'E'. This re-entry is also known in a later worn state, where the details of the re-entry are much fainter and the guideline is almost gone.

THE "NEW MAJOR RE-ENTRY ON THE 17¢ DECIMAL" — REVISITED by R. Trimble

Following the publication of the photo of the above mentioned stamp in the last issue of the Newsletter, I received a letter from Geoffrey Whitworth refuting its authenticity. Geoffrey writes:

"I am surprised at you printing those notes about a so-called new re-entry without doing a quick check yourself. There never was a repair by transfer roll to this plate. Five stamps show fresh entry doubling as illustrated in my book. This is not one of them. There are 20 positions with short entries at the top and not one of them shows any signs of re-entry — I have checked them all. You do not quote position number and so I cannot say what it is from your picture." He concludes, "It is just another fake attempt."

Geoffrey goes on in his letter to mention various large pieces and blocks that he and others have examined, with no record of a re-entry such as the one I showed. However, nowhere in Geoffrey's note does he indicate that a complete sheet has been examined, although from the material documented in his book on The First Decimal Issue of Canada, it would seem there must have been one examined at some time or other. In his book Geoffrey states, "Only 6,000 sheets were printed from the 17¢ plate and consequently the wear to the stamp impression is negligible and no repairs were ever carried out to the plate."

While I shall certainly concede to Geoffrey's expertise when it comes to the Decimal Issue, I can't help but wonder about this stamp! Before photographing it, I examined it VERY carefully, under high magnification, because I KNEW that no such re-entry had been reported by Geoffrey, or anyone else, for that matter. I also then examined the colour photograph carefully before deciding to run it — it's amazing what shows up in photos that you might miss when looking at the actual stamp. To me, and Hans, whom I asked for an opinion, the stamp looks genuine! There are heavy lines of doubling, as well as many extremely fine lines, that would have been extremely difficult to do 'by hand'. The size and direction of the shift looks plausible, and the re-entry details agree with the shift, to my eye anyway. I guess the only way to solve this is to see if another copy can be found. After all, the Major Re-entry from Position #62 on the 12½¢ that I reported in Issue #62 had not been previously reported either, after just as many years as the 17¢ has existed. With the vast number of re-entries that still turn up after years of study, nothing would surprise me! Just look at all the 5¢ on 6¢ S.Q.'s that have come to light of late. Nope, I'm afraid I'll have to reserve judgement on this one for now. If anyone else has anything to offer, especially a duplicate of the 17¢, please contact me. §

THE BUSINESS SIDEMEMBERSHIP REPORT

I would like to welcome one new member to our group:

#99 Arthur F. Halpert, North York, Ontario

ANOTHER SILVER MEDAL !!

I'm extremely pleased to announce that Volume 12, 1993 of our Newsletter was awarded a SILVER medal at STAMPEX 1994 in June here in Toronto. This is our Newsletter's THIRD silver!

WANTED: Material for our Newsletter! (Hand-written or on disk.)

One of the reasons this issue is late again is that it's getting harder and harder to come up with material for publication. Yes, I DO have mounds of photographs that I've accumulated over the years, but much of it is pretty dry stuff, with small bits of doubling, no plate positions, etc. Now, as I've said before, if you don't mind me filling the Newsletter with photos of re-entries so that you can compare them to stamps in your collections, that's fine with me. But, if you want in-depth studies of various stamps or theories, then please pick up your pen, or sit down at your computer and write something for me. (My brain seems to have dried up lately!) Or, send me something to photograph that you think the whole group would be interested in seeing. I can't remember the last item I added to my own collection, it's been so long, so I'm depending on you the members to send me material.

On that note...Awhile ago, I received some 3¢ S.Q.'s in the mail from Michael Rixon that he thought I might find to be of interest. I photographed some of the details and returned the stamps to Michael, figuring I would write them up myself when I had a chance. Well, lo and behold, if I didn't receive a computer disk in the mail with the article on it that you will find in this issue from Michael! (You know how notorious the 3¢ S.Q.'s can be for blurry or smudgy prints, so please excuse the quality of some of the photos. They are the best that I could do.) And the disk wasn't even in Macintosh format! You IBM'ers out there can submit articles to me on disk too, as long as you're sure to save them to disk in ASCII, text-only format. My trusty Mac can read DOS disks in this format and convert them to 'Mac-ese' for me. Yes, I do have to spend some time reformatting the text, but HEY, no problem! (I appreciate a 'hard copy' along with the disk.) Also in this issue are two articles that resulted from letters from members about material that already appeared in the Newsletter. *Two-way discussions!!! What a concept!!!*

So, if you have questions or comments or retorts or suggestions for articles, or if you have a dusty old stockbook full of incredible majors that you've been hiding from the world, please send them to me, so you too can feel like you've had a hand in garnering the awards our Newsletter is winning!!

MY APOLOGIES FOR THE INCONSISTENCIES OF THE LAST ISSUE!

I'm not sure how many of you noticed that the spacing of the headers and footers of many of the pages of the last Newsletter seemed to be all over the place? Well, they all started out the same, but when I picked them up from 'the printer', I noticed that many had pages with the footers touching the bottom edge of the paper at the bottom, while the headers had over an inch of space above them! And vice versa! Needless to say, I was not pleased!! The problem was traced to a sloppy adjustment of the feeder bin of the high-speed photocopier that was used. The manager DID offer to reprint the entire issue for me, but the thought of trashing over 1250 sheets of paper for something that a lot of you might not have even noticed, or care about, didn't strike me as very 'environmentally conscious', so I took them 'as is'. Hope nobody minds, and I'm sorry about that!

SOMETHING NEW HAS BEEN ADDED TO MY MACINTOSH !!

I've recently added a new 'toy' to my computer set-up, which I've used extensively in this issue of the Newsletter. I'll tell you more about it in the next issue (as I'm running out of space here), but for now, I'd like you to examine the illustrations (keeping in mind the 3¢ S.Q.'s were pretty smudgy to start with) and the balance of the lightness and darkness of the photos with the lightness and darkness of the print on the pages. You can easily find many examples of pages in earlier issues where the photos may look OK, but the printed text is too light. Any comments, positive or negative, before I tell you what I've done??? (Hint: It's NOT the smaller size of some of the text - such as THIS - that I've used this issue.) §