

RECEIVED FEB 28 1994

Canadian Re-entry Study Group

Ralph E. Trimble
Box 26556, Markville P.O.
Markham, Ontario
CANADA L3R 0M4

BNAPS PSSC CC RPSC PHSC CPSGB
APS APRL APES WU30 EFOCC

Whole No. 63

JANUARY — FEBRUARY 1994

Vol. 13, No. 1

TABLE OF CONTENTS

Page 1	THE MAJOR RE-ENTRY ON NEWFOUNDLAND #1
2	(Cont'd)
3	'TRIPLE' RE-ENTRY FOUND ON NEWFOUNDLAND #145 MAP
4	AN INTERESTING RE-ENTRY ON THE 6¢ YELLOW BROWN S.Q. BNAPEX RAMBLINGS
5	TWO 1¢ MAPLE LEAF MAJOR RE-ENTRIES FOUND ON PROOF SHEET
6	TWO STATES OF PLATE 5 OF THE MAP STAMP
7	ON THE ADMIRAL FRONT — 185UL25
8	WHERE ARE ALL THE ADMIRAL RE-ENTRIES? WANTED — CANADIAN MAJOR RE-ENTRIES (Advertisement)
9	TWO MORE 'MODERN' RE-ENTRIES WANTED — MAP STAMP RE-ENTRIES (Advertisement)
10	THE BUSINESS SIDE MEMBERSHIP REPORT FEES RENEWAL NOTICE MEDAL ANNOUNCEMENTS — HOW DO YOU FEEL ABOUT THEM???

Canadian Re-entry Study Group

Ralph E. Trimble
Box 26556, Markville P.O.
Markham, Ontario
CANADA L3R 0M4

BNAPS PSSC CC RPSC PHSC CPSGB
APS APRL APES WU30 EFOCC

Whole No. 63

JANUARY — FEBRUARY 1994

Vol. 13, No. 1



THE MAJOR RE-ENTRY ON NEWFOUNDLAND #1

by R. Trimble

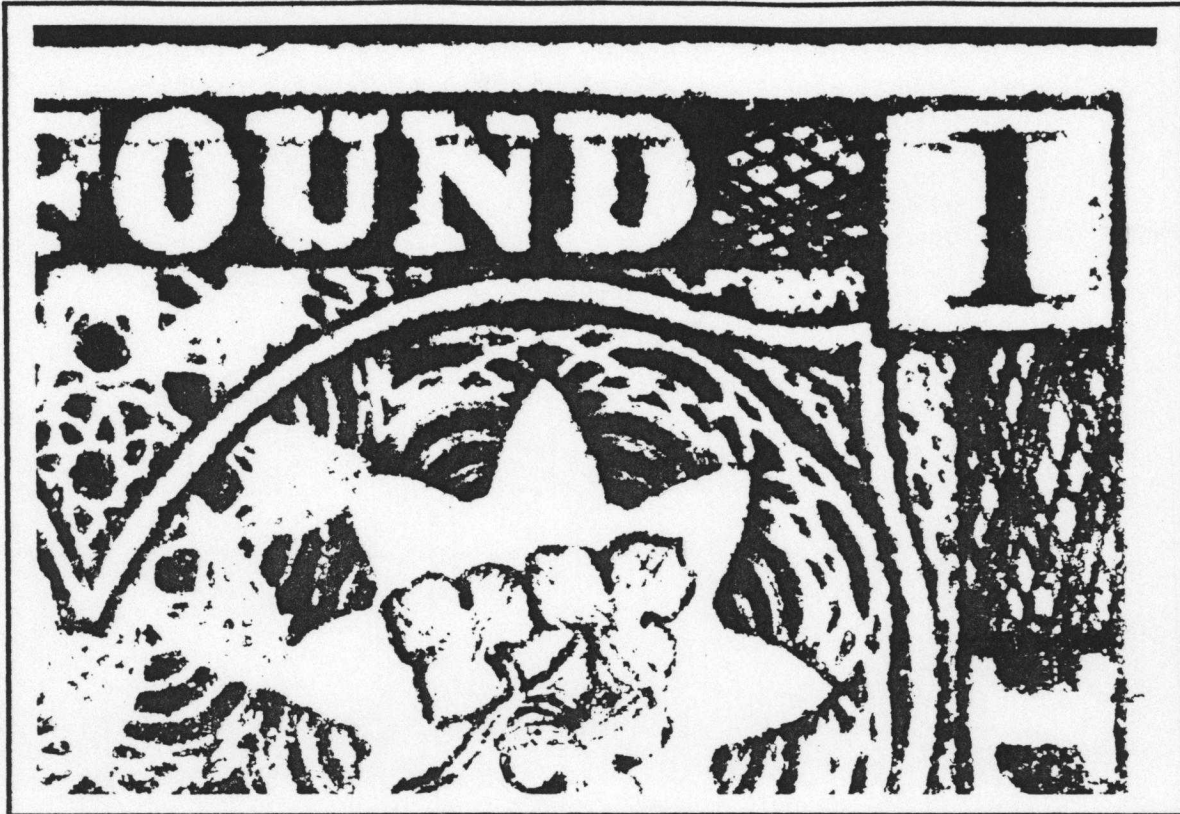
The Major Re-entry on Newfoundland's very first postage stamp, the 1d brown violet of 1857, has long been recognized by the catalogues over the years as existing, but many collectors are not familiar with exactly what the re-entry looks like. Well, your wish is my command. Thanks to member Fred Moose for sending along his beautiful copy of this re-entry, (I don't yet own one myself), I am at last able to show you the details of this stamp.

The 1d was printed in sheets of 120 (12 X 10) and the re-entry is located in Position #25 on the sheet. Boggs, in his *Postage Stamps and Postal History of Newfoundland*, described it simply as follows: *In the case of the one penny there is a prominent re-entry, #25 on the plate, which shows in the upper left "1" and by a line through "NEWFOUND."* (p.30)

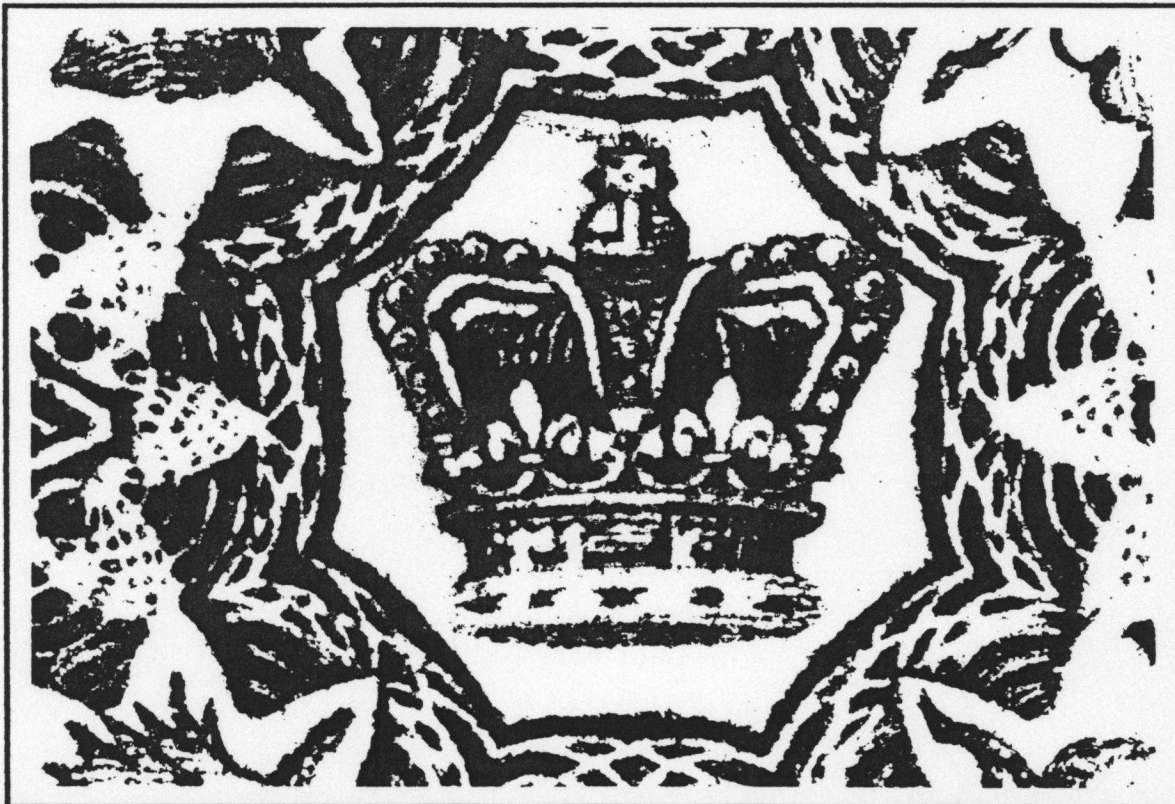
This pretty well sums it up, although from that description one may not expect to see quite as strong a line through 'NEWFOUND' as you do. It is quite heavy, and easily seen with the naked eye. The description may also be somewhat misleading, though, in that you might expect to see doubling of the UL '1', whereas what you really see is simply a line even with the top serif of the '1' that is part of the doubled top frameline that is also responsible for the line through 'NEWFOUND'. Boggs fails to mention that this line is also seen next to the top of the UR '1', as you can see on the next page. For those who think this may be a retouch, note also the doubling of the design above the crown in the centre of the stamp. This too is not mentioned by Boggs.

NEWFOUNDLAND #1 (Cont'd)

(UR corner. Note the line in this numeral box as well.)



(Central crown. Note the doubled line above the crown.)

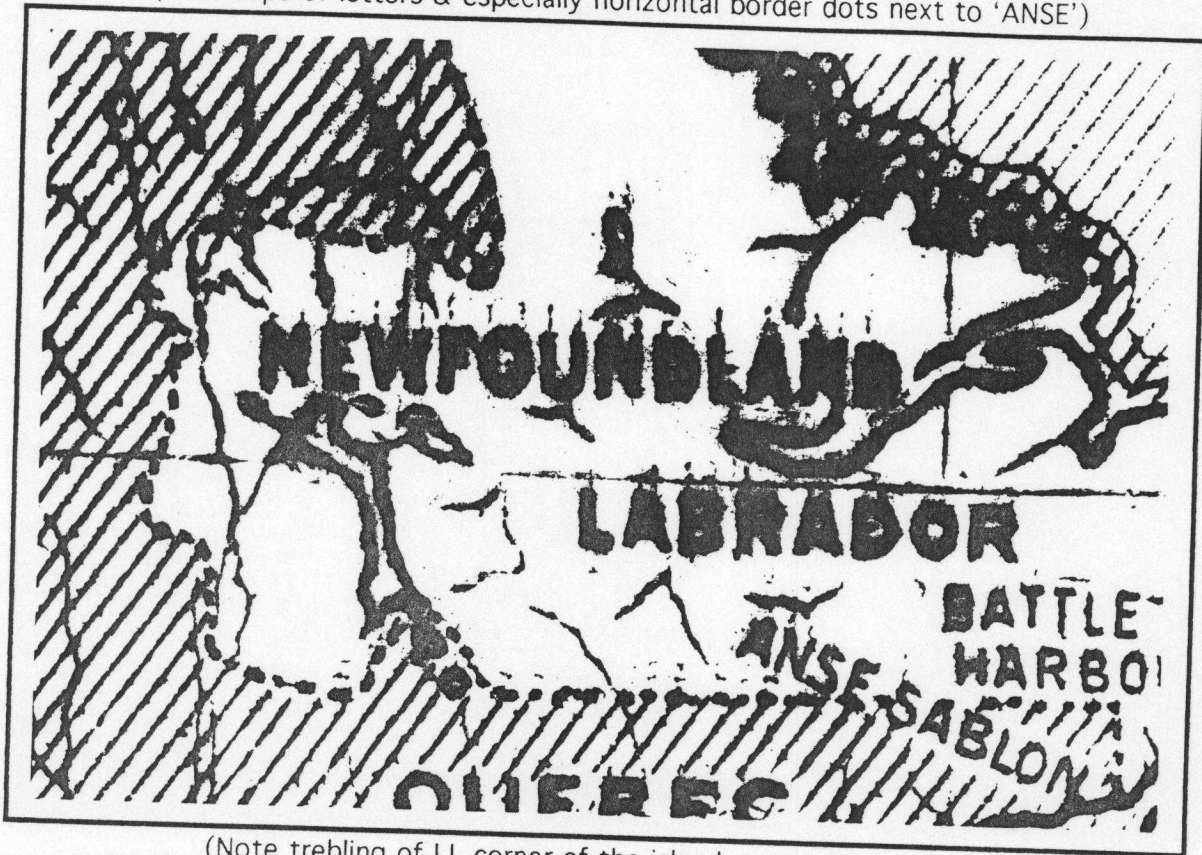


While certainly the most prominent, this stamp, which is more than likely a *fresh entry*, is not the only re-entry to be found on the 1d. Stay tuned for another one next time. §

'TRIPLE' RE-ENTRY FOUND ON NEWFOUNDLAND #145 MAP

by R. Trimble

(Note tops of letters & especially horizontal border dots next to 'ANSE')



(Note trebling of LL corner of the island, next to 'Cape Ray')



Following my article in Issue #40 on re-entries on this stamp, I have continued to find many examples of extensive re-entry of the plate, including stamps showing both upward and downward shifts. This one shows evidence of at least three re-entries, two upwards (above) and one down!

AN INTERESTING RE-ENTRY ON THE 6¢ YELLOW BROWN S.Q.

by Trimble



Above you see a rather interesting example of yet another type of re-entry on the 6¢ yellow brown S.Q. It is characterized by the strong line of doubling in the bottom of the L.L. '6' and the bottom of 'CENTS'. The diagonal of the 'N' of CENTS also has a faint line of doubling. I call it '*interesting*' because the stamp does not exhibit the usual sharp, clear doubling we see in so many of the other 6¢ S.Q. re-entries. Instead, the doubling here looks rather thickened and has a blurry appearance that we might normally associate with a slip or kiss print. However, this variety *IS* constant, and several identical copies have been seen.

There is also a large, clear guide dot that almost touches the design in the L.L. This stamp is unlike any of those found in Reiche & Sendbuehler's *CONSTANT PLATE VARIETIES OF THE CANADA SMALL QUEENS, 3rd Edition*. Unfortunately, the plate position is not yet known. This is another stamp from the collection of Bill Simpson. §

BNAPEX 93 RAMBLINGS

by R. Trimble

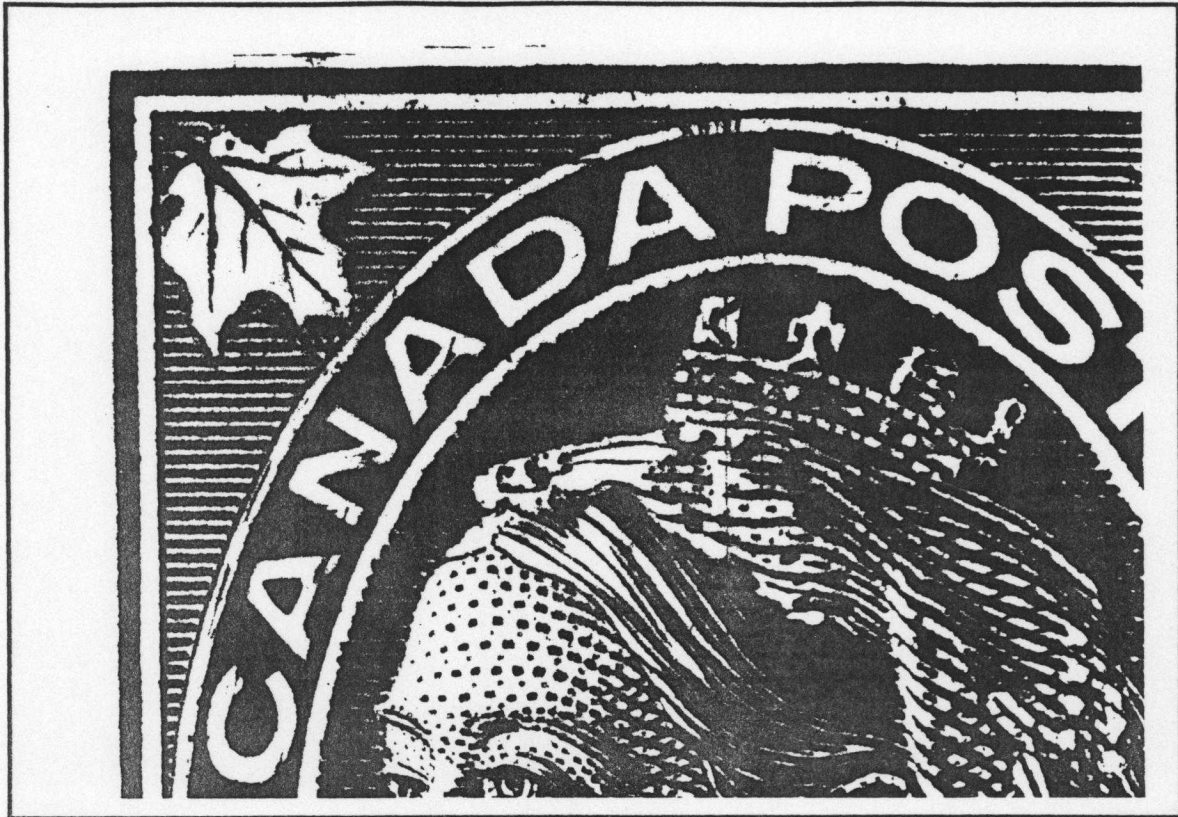
While at the Convention last September I made a few interesting discoveries that I haven't yet shared with you:

- I located the plate position of Warren Bosch's Misplaced Entry on the NFLD 5¢ Duke of York, Scott #85, that I reported in Issue #58, p.7. I found it in Position #1 in the U.L. corner of a proof sheet belonging to ... who else? ... John Jamieson.
- I spotted the strongest re-entry I have seen yet on the NFLD 5¢ Harp Seal, Scott #40. Not exactly sure of the position, but it was four places up and one place to the left from a bottom imprint. MAJOR doubling in the 'NTS 5' in the L.R. and heavy marks in 'DLAND' in the U.R.
- Spotted a minor re-entry on the U.L. corner of the 12½¢ New Brunswick, Scott #10.
- Harry Lussey tracked me down to show me another Misplaced Entry on Plate II of the 5¢ RLS. It is in Position #89, making it kitty-corner to the Misplaced Entry I showed you in Issue #45 from Position #85. (Remember the sheet of 100 was arranged 5 X 20). It's subtle, but shows a misplaced doubling of one of the scallops in the L.R. of the design. §

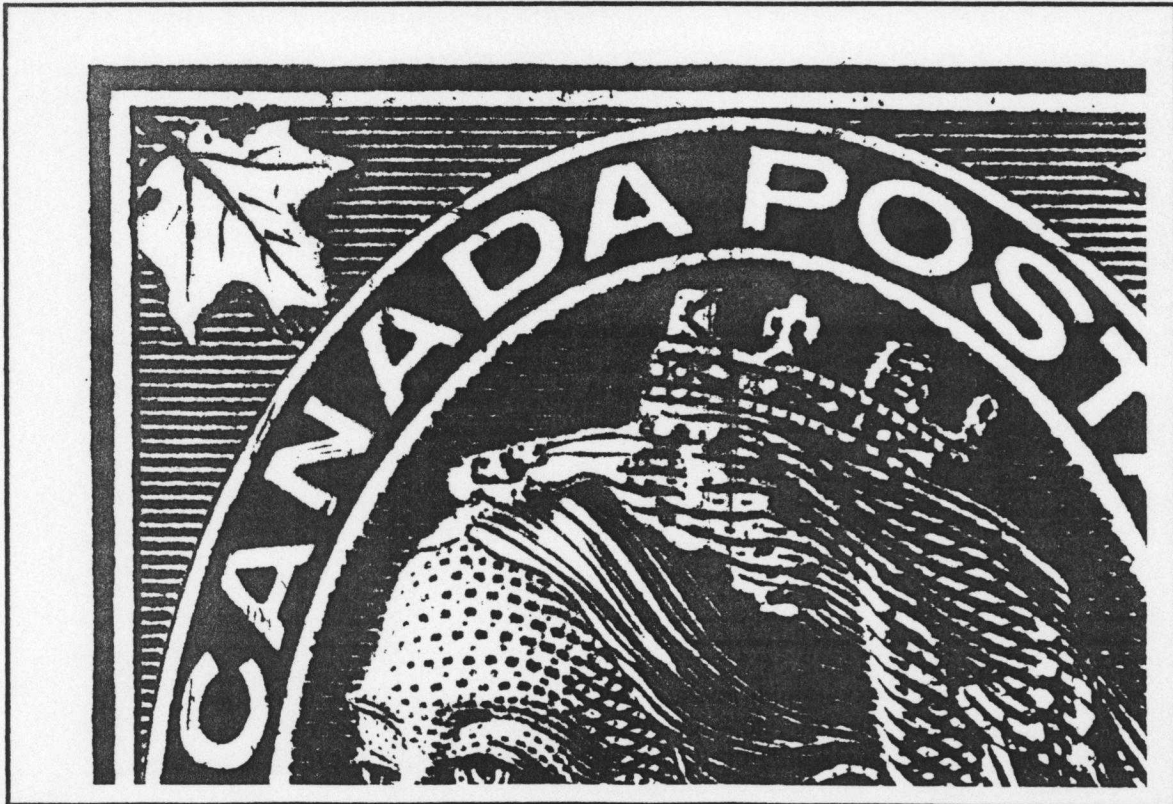
TWO 1¢ MAPLE LEAF MAJOR RE-ENTRIES FOUND ON PROOF SHEET

by R. Trimble

(3L9 — Plate 3, Left Pane, Position #9)



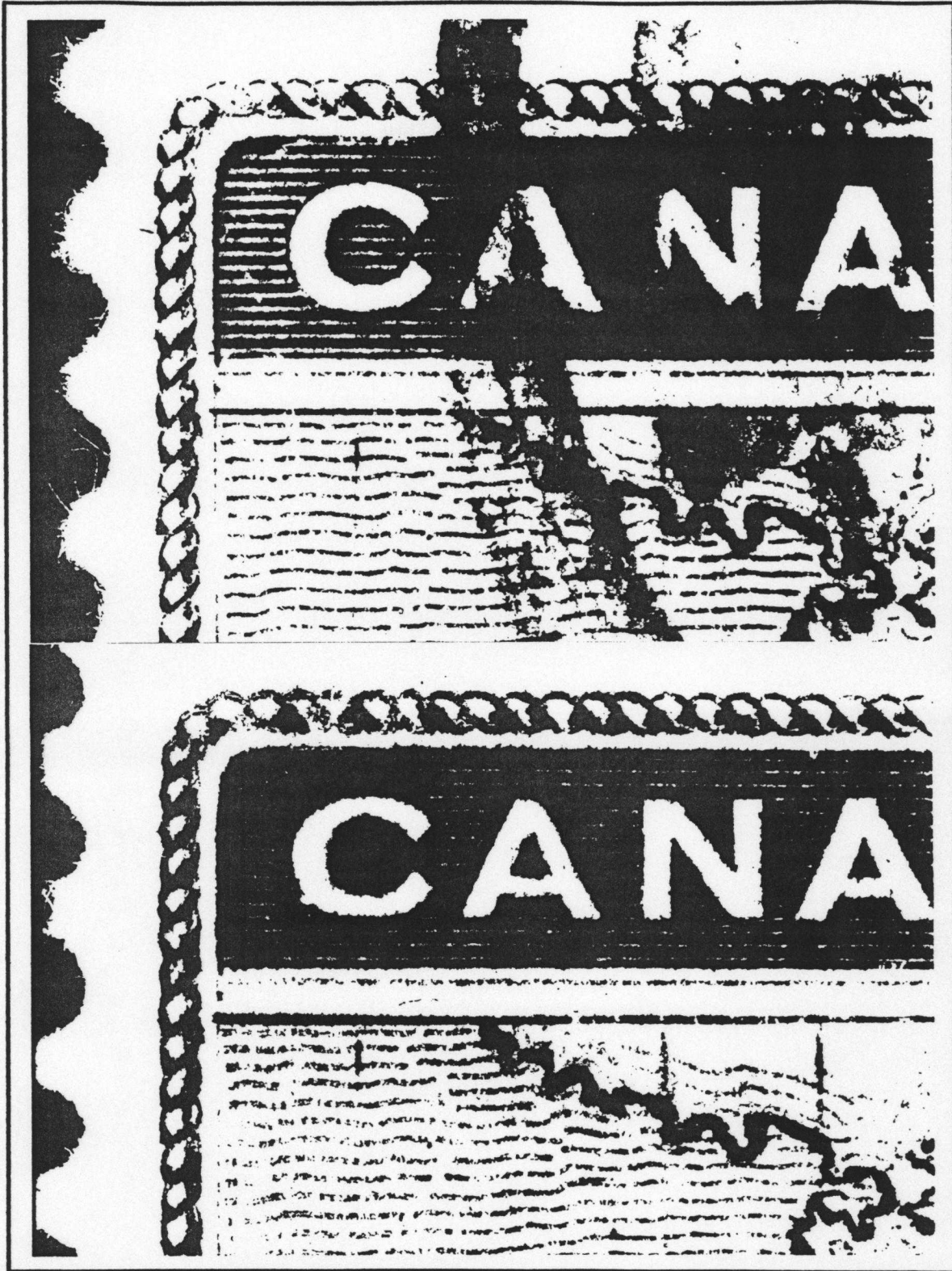
(3L10 — Plate 3, Left Pane, Position #10)



Above you see two re-entries I discovered on a proof sheet of the 1¢ Maple Leaf that John Jamieson acquired in the Christie's ABNC Archives Sale. These exist on the issued stamps as well.

TWO STATES OF PLATE 5 OF THE MAP STAMP

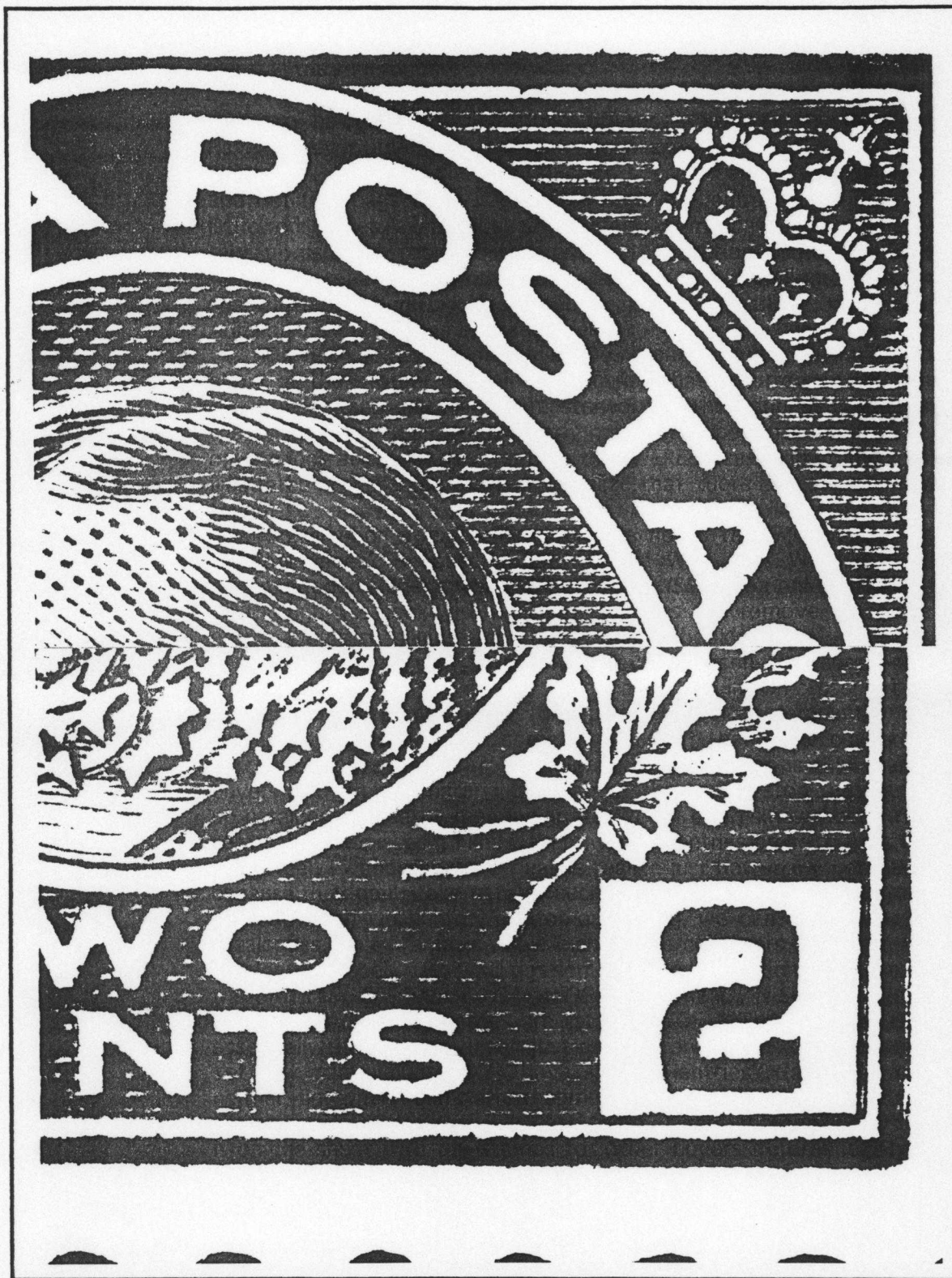
by R. Trimble



We all know that Plate 5 of the Map Stamp of 1898 is rife with major and minor re-entries and Whitney Bradley has found several instances of proof that stamps of at least two different states of the plate were issued. One of these is shown above. Both stamps above are from 5B14 (Plate 5, Red Plate B, Position 14), but the lower stamp indicates a clear re-entry, while the top stamp is clean. Note the doubling of the cable in the U.L., particularly above the 'C', the background lines around CANADA, and the doubled lines of Asia. The positions are confirmed by the many varieties on the red islands in the Pacific and Indian oceans. Thanks Whitney! §

ON THE ADMIRAL FRONT

by R. Trimble



It's been some time now since I last showed you an Admiral and when I came across these photos I thought you might enjoy seeing this one. This is a lovely, strong re-entry on the 2¢ green, Scott #107. Note the marvelous doubling of the crown and spandrel in the U.R., and the corner of the numeral box and leaf in the L.R. The right edge of some of the medals on the King's chest and the outer edge of the L.R. frameline are also doubled. The L.L. corner, not shown here, shows two diagonal dashes in the LNB to the U.R. of the '2'. Its position is 185UL25. §

WHERE ARE ALL THE ADMIRAL RE-ENTRIES?

by R. Trimble

Way, way back in Newsletter #8, November-December 1982, I 'wondered' what had become of all THE Major Re-entries from 12LR35 on the 1¢ green Admiral. At that time I came to the conclusion that they must be 'hiding' out there on the backs of picture postcards that were all the rage during those years.

Well, since that time I have also been 'wondering' about all the other Admiral re-entries that may be roaming around out there just waiting for a home in a re-entry-nut's collection. Have you ever noticed how much Admiral material there is in a typical stamp auction? You can hardly pick up one of the large auction house's catalogues, let alone most of the smaller ones, and not find page after page after page of beautiful Admiral strips, blocks, imprint pieces, lathework pieces, even full sheets! Indeed, some catalogues have Admiral photo sections that take up as much room as the rest of the auction combined! Everywhere you turn there is Admiral material coming out your ears. Now, this is well and good, particularly for the Admiral specialists out there who just gobble this stuff up, BUT ... when was the last time you saw an Admiral RE-ENTRY in one of these sales???

Oh yes, I admit that once in a blue moon a copy of THE major on the 1¢ appears, but what about all those other incredible re-entries that occurred on the Admirals? ... Where are they? Yes, I understand that Marler's masterwork on the Admirals was done from the proof sheets and that *some* of those in his book *may* never have been released on actual stamps, BUT you have only to look at the MANY re-entries that WERE released in stamp form, some of which have been illustrated in these very pages, to realize that there are a *great many* Admiral re-entries to be found!

So, why don't we see the re-entries noted that *MUST* occur on a goodly number of those auction pieces? Because nobody cares! Why not? Who knows? They are certainly well-documented in Marler's work, *THE ADMIRAL ISSUE OF CANADA*, APS 1982! Indeed, if one were to go through this book with a pair of scissors and remove all of the sections pertaining to re-entries, you'd certainly have a MUCH thinner book!

So why aren't they noted? Well, several reasons, I'm sure. For one thing, time! The dealers don't have the time to examine these pieces, and in some cases, they don't have the knowledge to recognize a re-entry in the first place. (No offence meant to any of my dealer friends out there, but you should *SEE* some of the stuff that some collectors send me that they have purchased AS re-entries from dealers!) Another thing is that many dealers don't feel that the buyers of this plate material *care* about the varieties on the stamps and so why bother taking up catalogue space by mentioning it? Well, I don't know about YOU, but I'd certainly consider some of those pieces if I knew there were re-entries present! As it is, I usually skip those sections altogether. I wonder if those dealers realize just how many potential customers they are missing because they don't take note of such things as re-entries?

How can we help? Well, for one thing, we can try to get more re-entries listed in the catalogues. Isn't it amazing how many more collectors want something once it's been given a catalogue number? THAT will get some dealers' attention! I have the brand new 1994 Edition of the *UNITRADE SPECIALIZED CATALOGUE OF CANADIAN STAMPS* sitting here in front of me. Know how many Admiral re-entries are listed? TWO! — The 1¢ Major & the 1¢ Major coil ... which is essentially the same re-entry, just on a different 'cut' of stamp! All the other values???

... ZIP! Yet how many values *DON'T* have *some* re-entries? Can't afford the plate pieces? Well, me neither, but when I can't afford something, something I *DO* make a habit of doing is pointing out the re-entries to dealers when I find them on their material. They usually appreciate it and mark it on the sheet with the stamps for other buyers' reference. Then if a re-entry collector who can afford the piece comes along, they may be attracted to it.

The thing is, the Admiral re-entries ARE out there! We're just going to have to find them for ourselves! And while we're at it, let's help get those Admirals into the catalogue! §

WANTED — CANADIAN MAJOR RE-ENTRIES

Turn your duplicates or unwanted items into "cash" to buy those other items you need. Send clear photocopies with your asking price, or call. John Jamieson, SASKATOON STAMP CENTRE, P.O. Box 1870, SASKATOON, SASK. S7K 3S2. Call TOLL FREE in North America.
1-800-667-6900

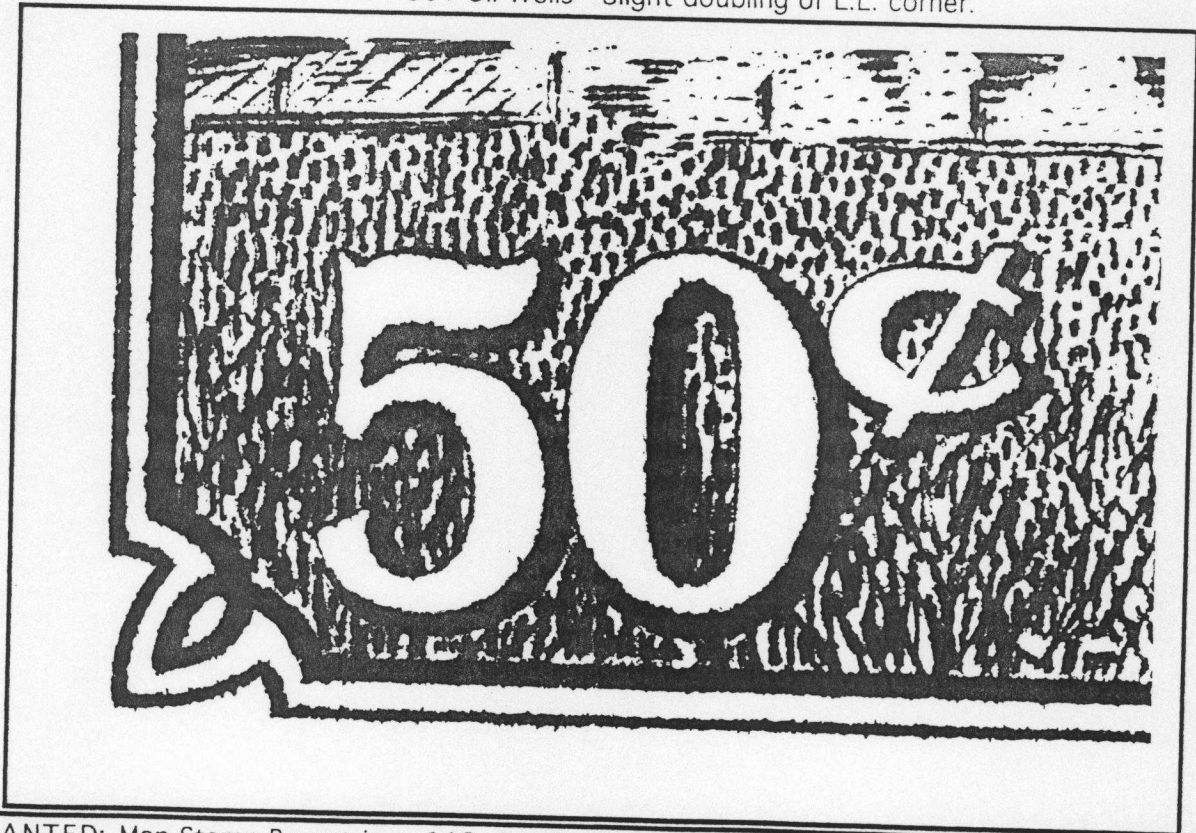
TWO MORE 'MODERN' MINORS

by R. Trimble

Scott #147 12¢ Laurier & Macdonald - Slight doubling of L.R. corner.



Scott #294 50¢ Oil Wells - Slight doubling of L.L. corner.



WANTED: Map Stamp Re-entries - 1A3, 3A47, 5B29, 91 & 92. Will pay cash or have some other positions to trade. Contact W.J. Beattie, 594 Alfred St., Pembroke, Ontario, Canada K8A 8C2

THE BUSINESS SIDEMEMBERSHIP REPORT

There are no new members to report. However, it is my most unpleasant duty to report the passing of one of our members, Mr. Preston A. Pope of California. Preston joined the group in 1987 and was member #46. On behalf of the group, I would like to extend our sincerest sympathies to Preston's family.

FEES RENEWAL NOTICE

Of the 55 members whose fees became due as of January 1st, there are only about a dozen who have yet to submit their cheques for 1994. My thanks to those of you who so quickly responded to my call for fees in the last issue. Those of you who have still not paid will find a *Second Notice* enclosed with this Newsletter. Please remember to make your cheques out in my name and not the group's. I'm hoping once again for a full renewal of memberships. A very hearty 'Thank You' to those of you who also included a donation of cash or postage with your renewals. My last minute decision to include a copy of the Newsletter Index for all members with the last issue put a tremendous strain on our bank account, what with the extra copying and postage costs, and so your generous donations are not only very much appreciated, but greatly needed. I hope you shall find the Index to be of use, although at this time I've only received one note from a member thanking me for including it. It may have been wiser to keep to my earlier policy of only sending it to those who requested it.

MEDAL ANNOUNCEMENTS — HOW DO YOU FEEL ABOUT THEM???

I have been politely taken to task by one of our members for announcing the medals and awards that our Newsletter has been winning. It has been suggested that I "*refrain from boasting about the medals you win at literature exhibitions. Such boasting is counter-productive as it results in members not wanting to contribute articles or to share information.*" ... I must admit that I was rather taken aback by this, as I assumed the members of the group would be interested in hearing how our Newsletter fares in the world of philatelic literature exhibitions. Indeed, at our study group's meeting at BNAPEX 93 I was even ASKED by one of the members present if I had any other results to announce and if we were entered in any other exhibitions? My response was greeted by applause and many congratulatory comments.

Part of my personal written response to this member's letter was as follows:

"Regarding my reporting of the medals our Newsletter is winning in Literature Exhibitions, I do not look on it as "boasting", but rather as keeping the membership apprised as to how our Newsletter is gaining recognition in the field of philatelic literature, and therefore how the study of re-entries is gaining a stronger foothold in philately. I think it is important to let our members know that our Newsletter is not considered to be just some piece of 'fluff', but is the carrier of important philatelic research and information that is simply not available anywhere else, and that it is being recognized as such by the judges in philatelic literature exhibitions!

An obvious example of how this directly affects the hobby is how more and more re-entry listings are being added to the *Unitrade Specialized Catalogue of Canadian Stamps*. This is, I believe, partly due to the existence of our study group. Without the increased influence that we are having on the hobby by means of our study group, I don't think much attention would be paid to us. However, if we can illustrate to the 'powers that be' that the study of re-entries is gaining in importance, in terms of numbers of group members, not to mention having an award-winning Newsletter, then our voice will be much more easily and strongly heard.

Indeed, I would think that these awards would be most productive and would work to *encourage* members to submit articles and share information, for that way, they too can share *directly* in the recognition that the Newsletters garner."

Well, what do the rest of you feel about this? Do you wish to hear about any awards our Newsletter earns or not? Am I intimidating members by these reports? If so, it certainly was not intentional! I'm proud of these awards and I just thought you might like to share in my pride. However, if you would prefer I stop making these announcements, I will. It's up to you. §

Note send
Mar 14/94
Keep
Bragging