

# Canadian Re-entry Study Group

Ralph E. Trimble  
Box 26556, Markville P.O.  
Markham, Ontario  
CANADA L3R 0M4

BNAPS RPSC PHSC CPSGB  
PSS CC EFOCC APS

Whole No. 61

SEPTEMBER — OCTOBER 1993

Vol. 12, No. 4

## TABLE OF CONTENTS

Page 26	AN ABUNDANCE OF MAJOR RE-ENTRIES ON THE ONE HALF PENNY
27	(Cont'd) Position #'s 22 & 42
28	(Cont'd) Position #'s 58 & 60
29	(Cont'd) Position #'s 70 & 72
30	(Cont'd) Position #'s 84 & 96
31	(Cont'd) Position #'s 46 & 120
32	(Cont'd) Position #'s 10 & 102
33	THE BUSINESS SIDE
	MEMBERSHIP REPORT
	BNAPEX '93 REPORT
	ANOTHER JOHN S. SIVERTS AWARD FOR YOUR EDITOR !!!
	SILVER BRONZES AT STAMPEX 93 & STaMpsHOW 93 !!
	MEMBERSHIP CARDS
—	(Attached) BNAPEX 93 STUDY GROUP MEETING — REPORT TO MEMBERS

# Canadian Re-entry Study Group

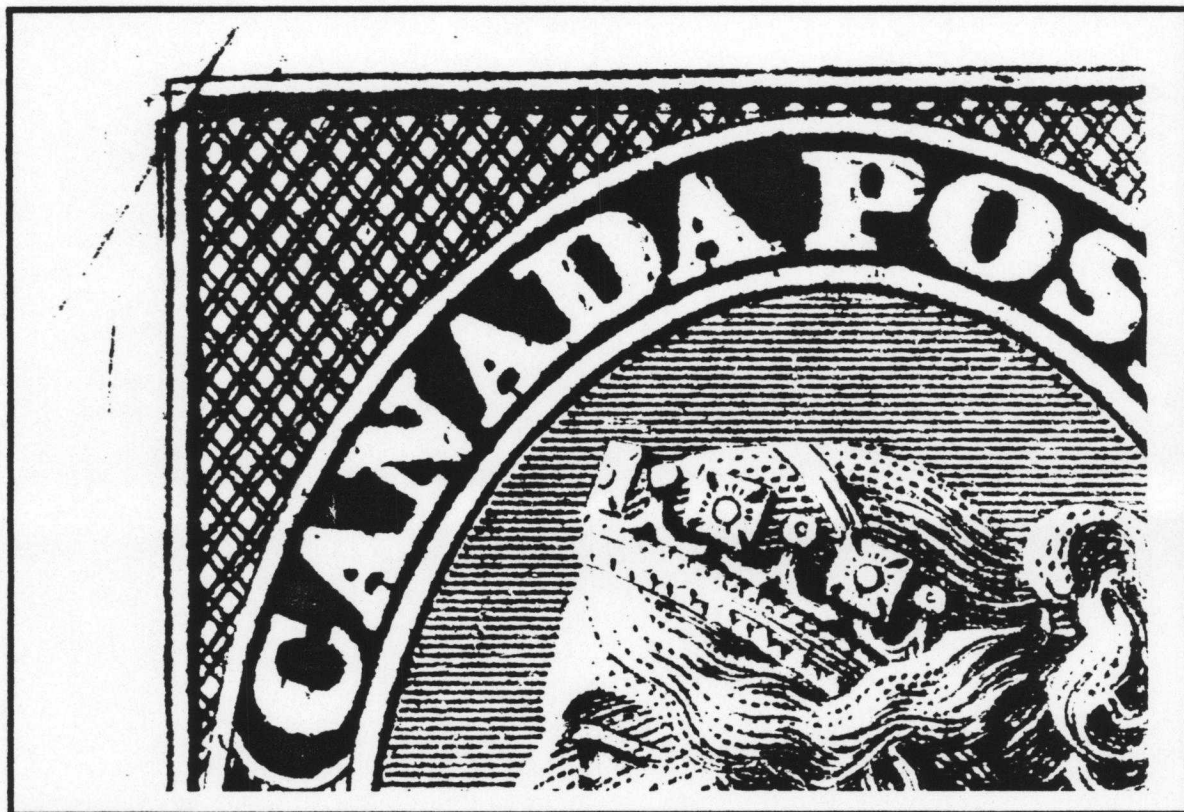
Ralph E. Trimble  
Box 26556, Markville P.O.  
Markham, Ontario  
CANADA L3R 0M4

BNAPS RPSC PHSC CPSGB  
PSS CC EFOCC APS

Whole No. 61

SEPTEMBER — OCTOBER 1993

Vol. 12, No. 4

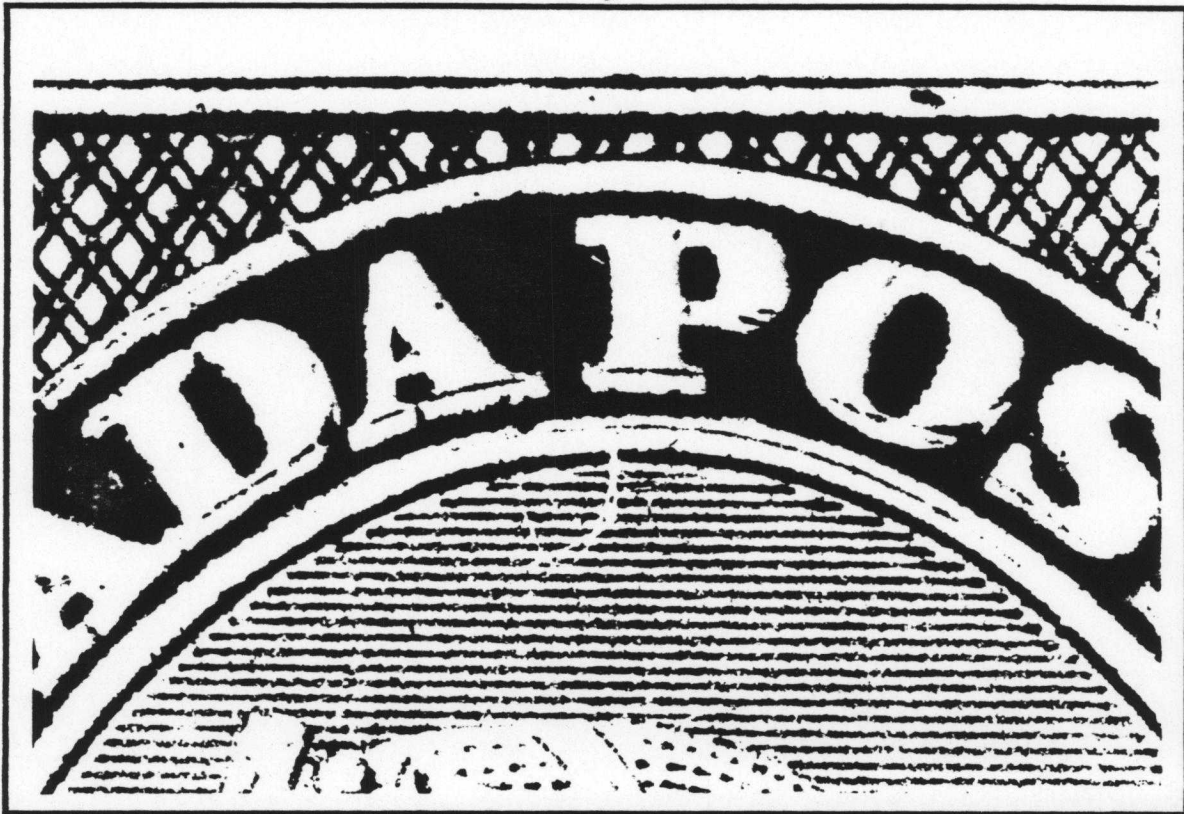


## AN ABUNDANCE OF MAJOR RE-ENTRIES ON THE ONE HALF PENNY by R. Trimble

At the end of August I had the extraordinary pleasure and opportunity of examining first-hand a full proof sheet of 100 of the ONE HALF PENNY Pence Issue of 1857, thanks to my friend John Jamieson of the Saskatoon Stamp Centre. This incredibly beautiful sheet had been printed from the already trimmed plate, from which the two right columns had been removed so that the sheets would fit through the perforator for the 1858 issues. This reduced the plate from its original 120 impressions (12 X 10) down to 100 (10 X 10), and resulted in the loss of the two left vertical columns of the printed sheet. While I still don't know what re-entries were lost with the removal of those stamps, I do know that if the two right columns had been removed instead, we would have lost five major re-entries, including The Major from Position #120 (seen above)! As it is, on this reduced sheet I found some 28 re-entries, including TEN major re-entries, plus two other strong ones! The majors include some of THE nicest re-entries you could ever hope to see on a Canadian stamp! While I have photographed all four corners of each of the majors, along with the pertinent areas of the more minor re-entries, I wanted to find some way of showing the majors to you without using up too much space, so what I did was to also photograph close-up, THE main feature of each major, and these are the photos you shall find on the following pages. I believe this is the first time photos of many of these re-entries have ever been published and should clear up some of the confusion found in Boggs & Jarrett. If interest warrants, I could show each stamp in greater detail in future issues. (Continued)

ONE HALF PENNY (Continued)

A Major Re-entry Position #22

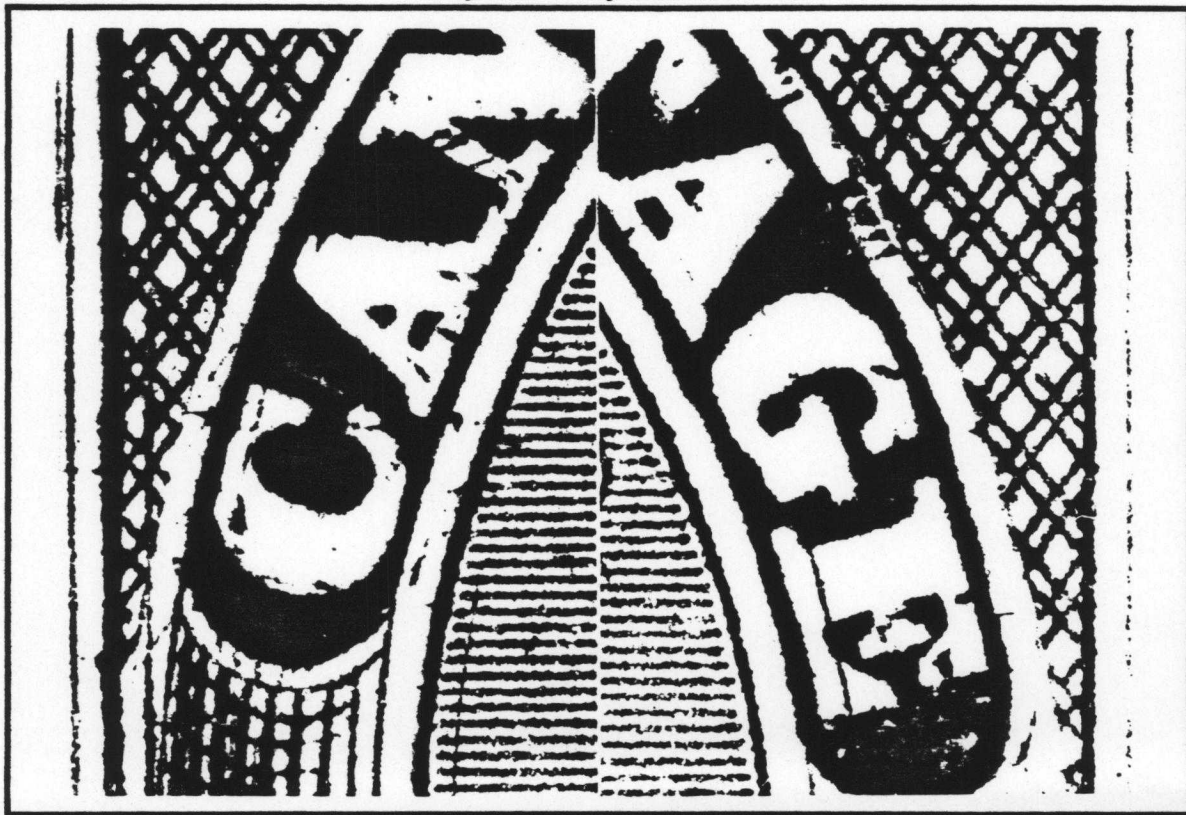


A Major Re-entry Position #42



ONE HALF PENNY (Continued)

A Major Re-entry Position #58

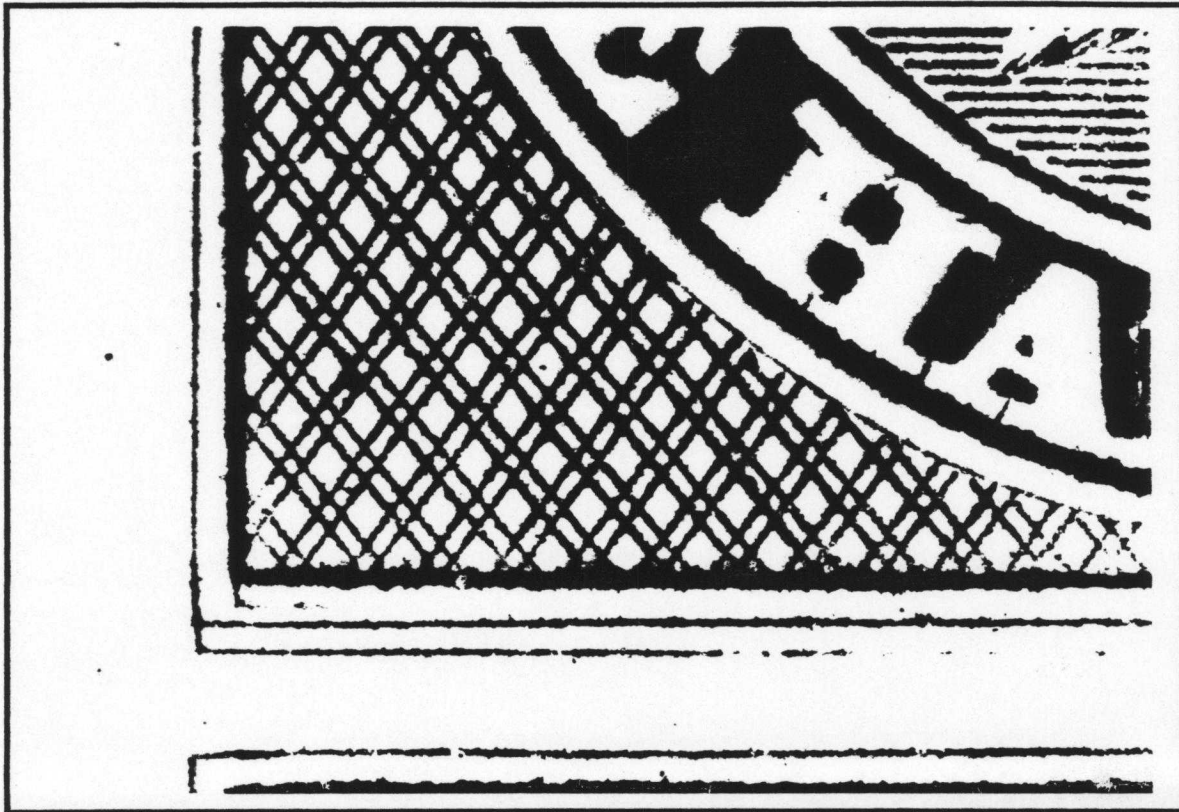


A Major Re-entry Position #60

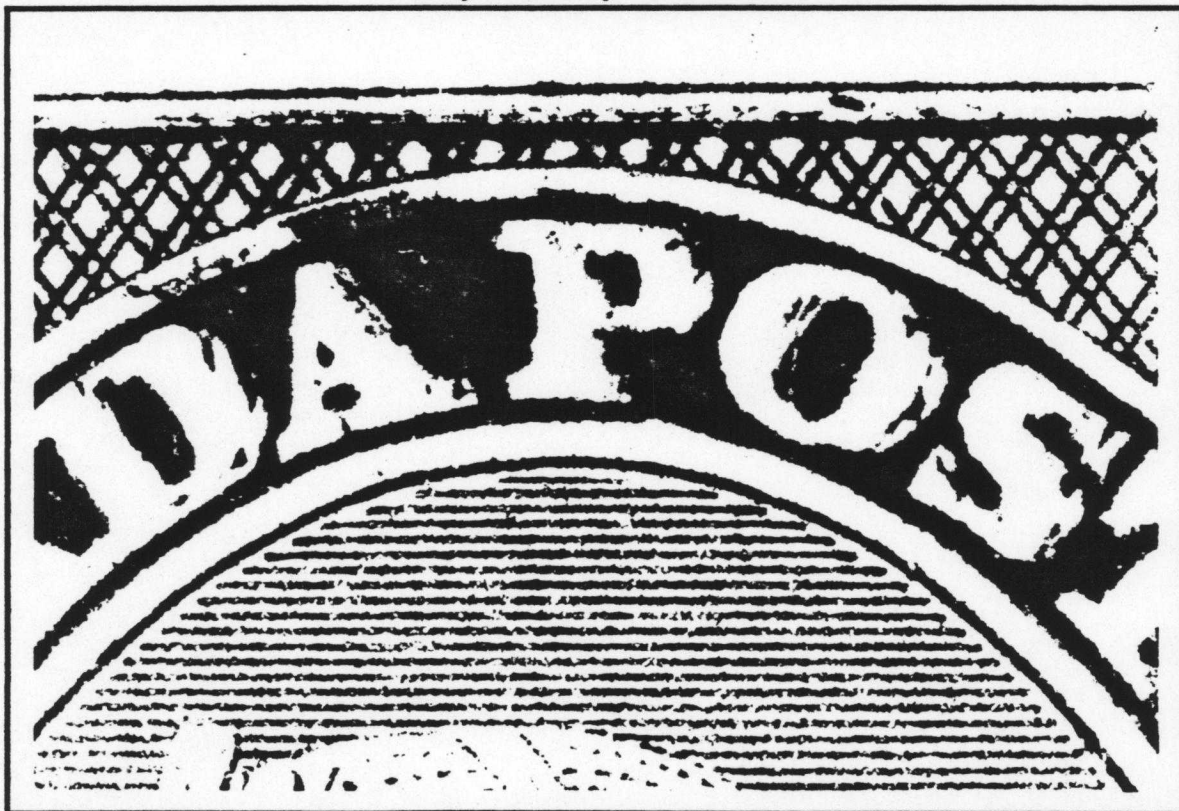


ONE HALF PENNY (Continued)

A Major Re-entry Position #70



A Major Re-entry Position #72



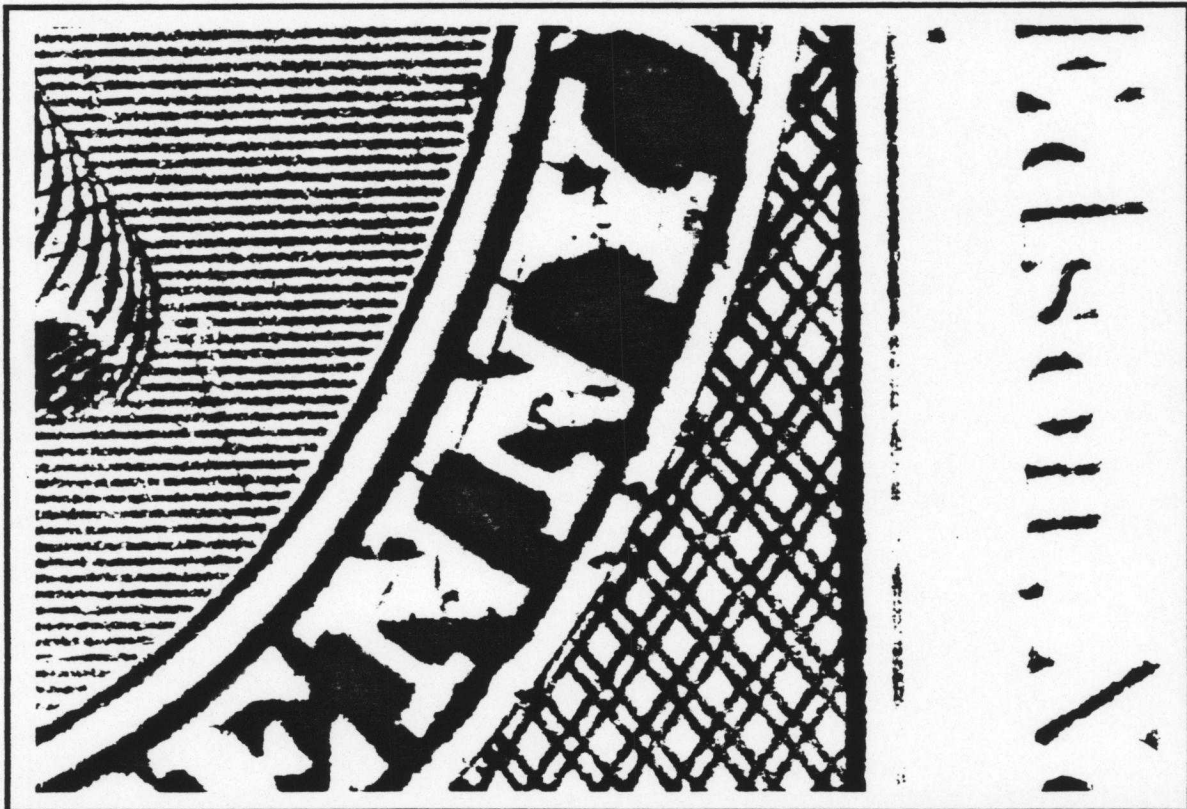
(Continued)

ONE HALF PENNY (Continued)

A Major Re-entry Position #84



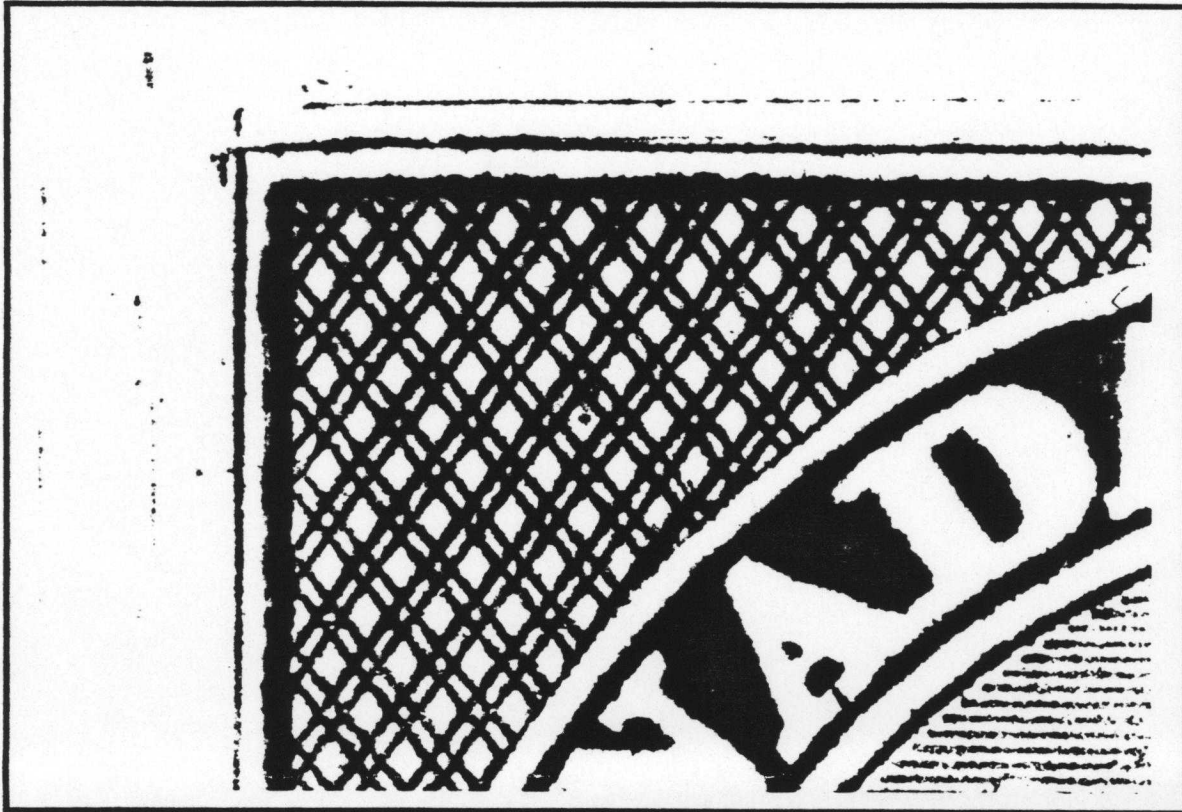
A Major Re-entry Position #96



(Continued)

ONE HALF PENNY (Continued)

A Possible Major Re-entry Position #46

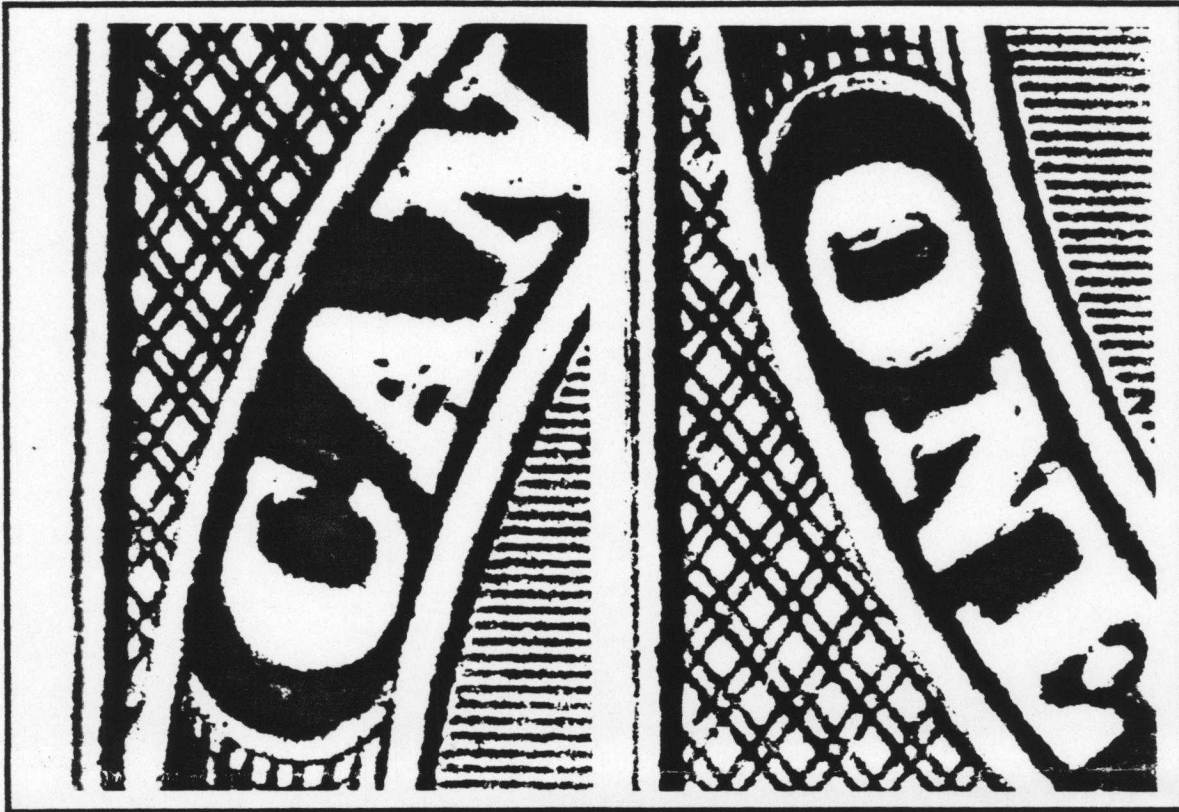


The Major Re-entry Position #120



ONE HALF PENNY (Continued)

A Strong Re-entry Position #10



A Strong Re-entry Position #102



So there you have it ... a close look at 10 major and 2 strong positions on the sheet, with hopefully enough detail to identify any of the positions you may have! What a *great* time I had!! S



THE BUSINESS SIDEMEMBERSHIP REPORT

I would like to welcome SIX new members to the group:

- #88 Roger Boisclair, Charny, Québec
- #89 John E. Armstrong, Sarnia, Ontario
- #90 Charles E. Black, Cambridge, Ontario
- #91 Michael Rixon, Montreal, Québec
- #92 Alexander E. Hutton Jr, Peterborough, NH., U.S.A.
- #93 Amoz Chernoff, Potomac, MD., U.S.A.

BNAPEX '93 REPORT

What a great Convention! My congratulations to the Convention Committee for all the work they put into making this a memorable one! The exhibits were top quality, the bourse was small, but with loads of material for everyone, the banquet was superb, and the company was terrific! It was such a great pleasure to meet so many Re-entry Group members for the first time, as well as meeting many of you again! The 'people' of the last sentence are what make a convention such as this really special! There's nothing else like it!

Well, rather than repeat a lot of things here, I am enclosing with this Newsletter a copy of the 'Report to Members' that I handed out at the meeting on Saturday, September 4th. Any questions or comments about any of the items would be welcome from those of you who were not in attendance.

I was extremely pleased with the turnout this year, with 16 individuals in attendance at one point. I realize several of you had to leave to attend other meetings, etc., and I appreciate you making the effort to make an appearance. After some discussion of the items on my report, we went on with the slide presentation, which turned out to go on longer than I had planned, but still, a number of you hung in 'til the end. Many thanks!

ANOTHER JOHN S. SIVERTS AWARD FOR YOUR EDITOR!!!

I am extremely proud to report that the BNAPS Committee at BNAPEX '93 (composed of the President, the Chairman of the Board, the Study Group Co-ordinator, the Editor of the Study Group Centerline column, and the Editor of BNA TOPICS) decided to bestow the *John S. Siverts Award for Best Study Group Newsletter* upon yours truly for yet a second time! I can't tell you how much this means to me, especially after perusing the table of study group newsletters that was on display in the exhibit hall! This is the first chance I'd had to have a look at all the other Newsletters, and believe me, I was impressed! Having seen these, it makes me appreciate receiving this tremendous honour even more. I am incredibly thankful and will try my best to live up to the high standards that have been set by the Committee. And of course, thank YOU, the members of the Re-entry Group, for your continued support and encouragement. It is this support that keeps me going and is therefore responsible for me even being eligible for such wonderful awards! I couldn't do it without you folks!

SILVER BRONZES AT STAMPEX 93 & STAmPSHOW 93 !!

I'm pleased to report that Volume 11 of our Newsletter received a *SILVER BRONZE* medal in Houston at STAmPSHOW 93 held August 19-22 and another *SILVER BRONZE* at STAMPEX 93 in Toronto. The question of medals was raised at our meeting at BNAPEX 93 and I'm very pleased to see that our members are interested in how we do in such endeavours.

MEMBERSHIP CARDS

Enclosed you will find your CRSG Membership Card. See the enclosed REPORT for details. §

---

**Canadian  
Re-entry  
Study  
Group**

Ralph E. Trimble  
Box 26556, Markville P.O.  
Markham, Ontario  
CANADA L3R 0M4

BNAPS RPSC PHSC CPSGB  
PSS CC EFOCC APS

---

**BNAPEX 93 STUDY GROUP MEETING**

**REPORT TO MEMBERS**

Welcome to BNAPEX 93 and thank you very much for attending our meeting. I have a few items to report to you at this time. Please feel free to ask questions or comment about anything you may wish to know.

**MEMBERSHIP STATUS:** I am pleased to report that I've just welcomed member #92 to our group. Actual membership at this time is 75.

This is an increase in membership of 5 new members since our last Newsletter, 10 since December '92 and 14 since this time last year!

**FINANCIAL STATUS:** Our group is in a good financial state at this time, thanks to the continued support of our membership through renewals and generous donations.

Our bank balance as of August 25th is \$500.87.

The cost of producing and mailing the Newsletters runs about \$145 per issue. Photocopying costs are approximately \$60+ per issue, while postage for a normal mailing is now costing \$80+ per issue. Heavier mailings that include copies of the Index raise the costs accordingly. These amounts do not take into account any of the costs incurred for film and photographs, nor do they include items like manila envelopes or mailing labels which are purchased in bulk and last several mailings.

Using the \$145 figure as the minimum for monthly costs, you can see the 1994 issues will cost at least \$725 for five issues, and that's not including any photography costs, envelopes, labels or heavier mailings with Indexes. We will have 65 of our 75 members being required to submit fees for 1994 (ten have already paid in advance) and assuming full renewal I can expect to receive \$650 in fees. As you can see, this is rather short of our minimum projected costs. This is why we are still dependent on and very grateful to our members who make donations to the group, in addition to their regular fees.

**MEMBERSHIP CARDS:** At long last our members shall finally receive membership cards. A new product that has made it very easy for me to design and print cards with my computer has made this possible. I am donating these to the group and they will be included with the next Newsletter. §