

Canadian Re-entry Study Group

Ralph E. Trimble
P.O.Box 532, Stn. 'A'
Scarborough, Ontario
CANADA M1K 5C3

Whole No. 49

MARCH - APRIL 1991

Vol. 10, No. 2

TABLE OF CONTENTS

Page 9	A MAJOR RE-ENTRY ON THE 2¢ MAPLE LEAF
10	TWO RE-ENTRIES FOUND ON THE 2¢ DECIMAL
11	ANOTHER MAJOR RE-ENTRY ON THE 1¢ SMALL QUEEN!
12	RE-ENTRIES ON THE 6¢ RED-BROWN SMALL QUEEN - PART 8
13	TWO RE-ENTRIES ON THE 20¢ QUEBEC TRICENTENARY
14	HANS REICHE REPORTS: ANOTHER 2¢ CARMINE ADMIRAL RE-ENTRY
15	THE MAJOR RE-ENTRY ON THE 1865 NEWFOUNDLAND 24¢ DECIMAL
16	MEMBERSHIP REPORT
	ANOTHER WAY OF SEEING - A FOLLOW-UP
	WANT AD

Canadian Re-entry Study Group

Ralph E. Trimble
P.O.Box 532, Stn. 'A'
Scarborough, Ontario
CANADA M1K 5C3

Whole No. 49

MARCH - APRIL 1991

Vol. 10, No. 2



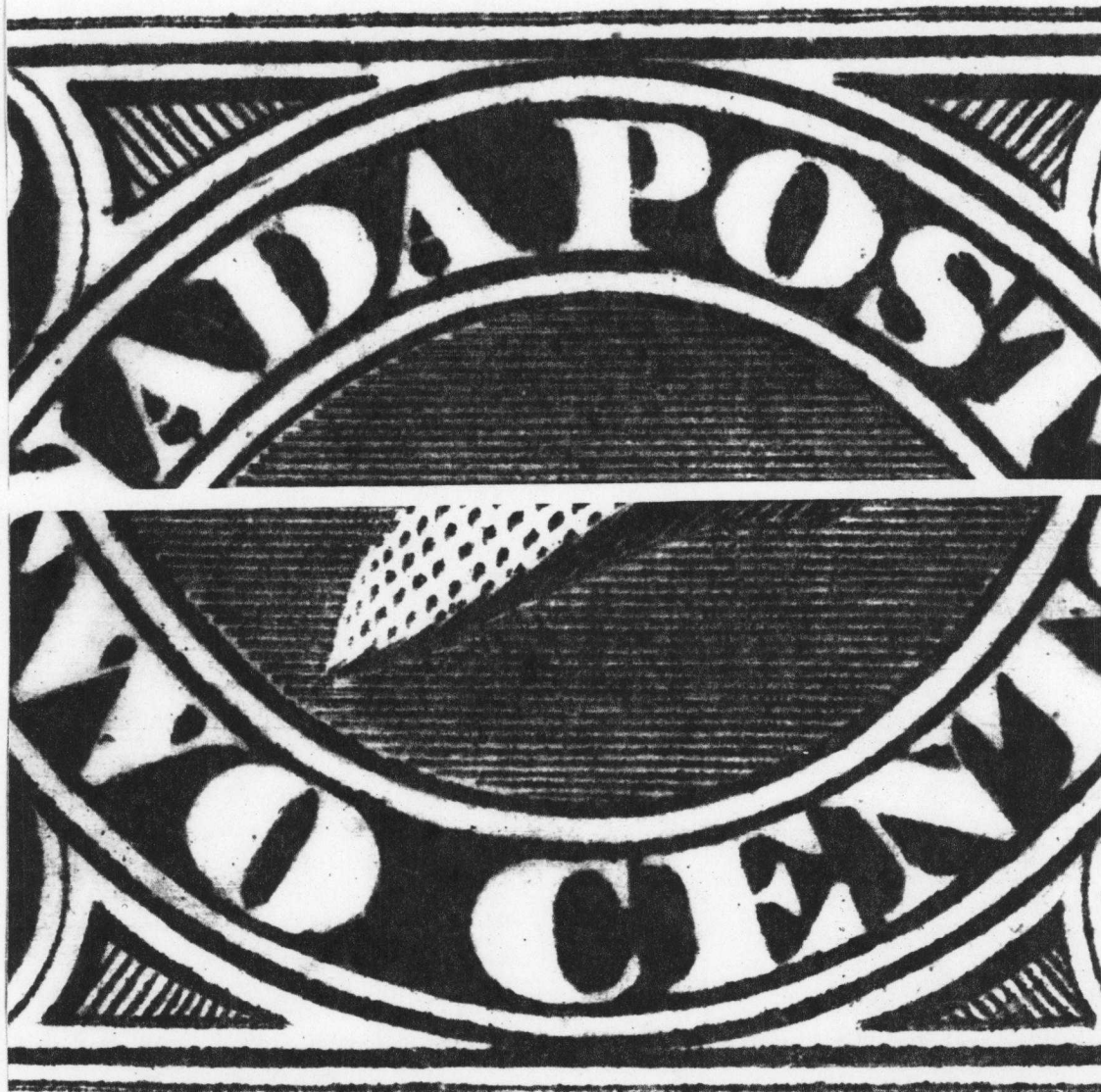
A MAJOR RE-ENTRY ON THE 2¢ MAPLE LEAF

by R. Trimble

Back in Issue #47 in my article RE-ENTRY TERMS - A PROBLEM OF SEMANTICS "fresh entry", p.38-39, I mentioned having discovered not only three fresh entries on John Jamieson's Proof sheets of the 2¢ M.L. from the ABNC's sale at Christie's, but also a Major Re-entry. Unfortunately, at that time I had not had the opportunity to photograph those stamps and so I was not able to illustrate them with the article. However, thanks to John's willingness to help out, I now have photos of all positions showing the varieties. John graciously mailed me one proof sheet of the 2¢ value, along with a sheet of the 1¢, which also has some more minor re-entries that I had recorded while examining the sheet earlier.

Above you see the U.R. corner of Position #2, from the Left Pane of Plate 1 of the 2¢ Maple Leaf, Scott #68. As you can see, the stamp has a twisted re-entry resulting in doubling of the letters 'ADA POSTA', as well as the leaf and the U.R. corner of the frame. The lower portion of this stamp also shows doubling of the L.R. corner, including the frame, 'CENTS' and lines of the veil, as well as strong doubling of the L.R. leaf. This stamp is a perfect example of an 'initial re-entry' as discussed in the above mentioned article. Photos of the fresh entries in Positions 1, 11 & 21 will appear in future issues of the Newsletter. Thanks again, John! §

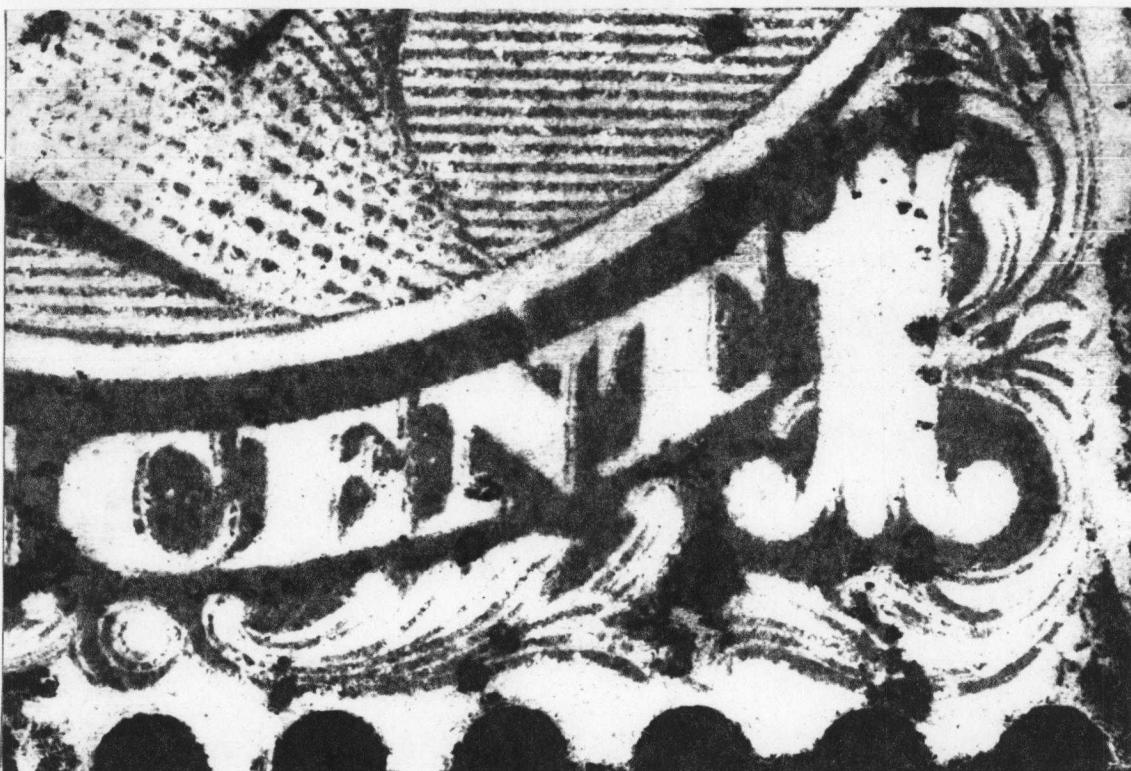
Bank Note Co. No



Dr. Arthur H. Groten, in his little BNAPS Handbook, **PLATING CANADA'S 2¢ STAMP OF 1864**, stated on page 4, "No true re-entry has been found on this stamp." Well, I hate to disagree with the good Doctor, but I believe this statement is incorrect! I have just finished examining a complete proof sheet of this stamp that was graciously sent to me by Kasimir Bileski of Winnipeg, and I am certain that two of the positions that Dr. Groten listed as "frameline recuts" are indeed re-entries! The stamp at the top is Position #8, while the one at the bottom is #94. #8 shows clear doubling of the top frameline, both triangular-shaped designs above 'DA' & 'OS', the top of the portrait oval, and the horizontal background lines above the portrait. #94 is very similar, with doubling of the bottom frameline, both triangular-shaped designs below 'WO' & 'EN', and background lines below and in front of the portrait. Both also show finely doubled lines around the U.R. & L.R. 2's respectively. #8 also has the common 'dash in right 2' variety. With much more than just doubled framelines, these are clearly re-entries. §

ANOTHER MAJOR RE-ENTRY ON THE 1¢ SMALL QUEEN !

by R. Trimble



Above you see the lower portions of a previously unlisted Major Re-entry on the 1¢ S.Q. from the collection of Hans Reiche. Although this stamp does not appear in his last Small Queen book, I'm sure it will be included in his newly up-dated edition, due out any time now. As you can see, this one shows a strong lateral shift resulting in strong doubling of both 1's and all of ONE CENT. Doubling is also found in all of CANADA POSTAGE in the top of the design. I don't recall even seeing one of these in Bill Simpson's collection, although he has yet another Major that I shall show you soon. Any member with copies of this re-entry are asked to please notify me. §



In the final installment of this series based on Bill Simpson's block of 12 from the 'B' Pane, I am showing you the L.L. corners of two positions with minor re-entries. Both show doubling of the leaf ornaments above the '6' and the outer frame of the numeral ovals on the left. While the upper one is much clearer and sharper than the lower stamp, the lower one is actually a slightly stronger re-entry, as can be seen by the doubling in the '6', with its widened central oval of colour and the doubling on the right side of the numeral. The upper stamp is from Position B86, while the lower one is from B94. I hope you have enjoyed this series on Bill's marvelous block! Imagine the number of re-entries that must exist on the rest of this pane! It's possible the unplated positions of the two 5 on 6's are on this pane somewhere! We know the one from B25 is there! §



I recently became aware of some concerns about the Major Re-entry on Scott #103, the 20¢ Quebec Tercentenary of 1908. It has been recorded that the Major Re-entry is found in Position #21 on the sheet of 100, but there still appear to be questions about the exact details of the re-entry. For those who look upon Boggs as the 'last word' when it comes to such matters, I should tell you flat out that the photograph Boggs shows on page 419, Fig. 3, is NOT 'The' Major Re-entry, but simply one of at least three re-entries that occurred on this stamp.

Above you can see two of these re-entries, while the photo in Boggs is the third. There may well be more. On the left is THE Major Re-entry which shows extremely strong doubling of the U.R. corner, including all of '1908', '20', the right frame with extensions of the horizontal lines, and the right border detail below the '0' of 20. Regarding the latter, note the strong vertical line of doubling down the centre of the left vertical column of white space, as well as the doubling of the right side of the inner band of design within this border detail. At the top of the right vertical column of white inside the right frameline, there is also only one short, vertical line remaining, the second being obliterated by the doubling. The stamp on the right, from Hans Reiche's collection, shows only a minor re-entry of the right frameline, with none of the other details. The photo in Boggs appears to be a slightly stronger version of this type, NOT THE MAJOR!\$

HANS REICHE REPORTS: ANOTHER 2¢ CARMINE ADMIRAL RE-ENTRY

I enclose for your next photographic session one which I just found. It is from the very early plate of the 2¢. It shows the practically unbroken right numeral box line with a very small gap at the top vertical line. It also has the typical short dash in the 'S' of POSTAGE. The re-entry shows up in both numerals [less in the right than in the left one], slight indications in CANAD and very strong above these letters, and above the top left frameline. This variety is not listed by Marler. §

WANTED: Reports of previously unlisted re-entries for inclusion in my book on BNA RE-ENTRIES. Especially interested in re-entries on those issues for which no re-entries have yet been reported, such as the 1928 'Scroll' Issue, Geo.VI War Issue, etc. R. Trimble §



While Boggs, in his book on Newfoundland, mentioned that there were several re-entries on the 24¢ Decimal, the above is the only one he mentioned specifically. This is The Major Re-entry, which is found in Position #9 on the sheet of 100, and it shows a strong shift downwards, as can be seen by the numerous marks in both numerals, 'CENTS', below the necklace, and above both 24's in the white ovals. With only 1000 sheets printed, this is a relatively scarce re-entry. As several members mentioned on their Questionnaires that they enjoyed articles on Newfoundland, I shall continue to run articles on Provincial Issues when material is found. §

MEMBERSHIP REPORT

I would like to welcome the following new members to the group:

#74 Michael D. Smith, Oak Ridge, Tenn., U.S.A. *

#75 Dr. Michael F. Charette, Windsor, Ontario *

* NOTE: Starting with this issue, I have decided not to include the full addresses of new members. The main reason for this change in policy is that our Newsletters are more and more ending up in the hands of non-BNAPS members. Group members seem to be passing their copies on to friends and acquaintances to read, some of whom end up writing to me, as well as copies sent to the Canadian Postal Archives being put out on display to the public. Now, I certainly have no problem with this ... it's great to see non-members taking an interest, but I do feel that there may well be many members who do not wish their addresses to become public knowledge. It goes without saying then, that I shall no longer run changes of address either. Should you wish to know the addresses of other study group members so that you might write to each other about common interests, etc., don't forget that computerized membership lists for the Re-entry Group are available to members in good standing on request. BNAPS membership lists are also available from the BNAPS Secretary for a small fee. I'd be pleased to hear from anyone who may disagree with this policy.

ANOTHER WAY OF SEEING - A FOLLOW-UP

by R. Trimble

I'm sure you recall my article from Issue #43, and which later appeared in TOPICS, that had to do with viewing stamps using backlighting. I had discovered that this was a very easy way to see re-entry details on light-colored stamps such as the 1¢ & 3¢ S.Q.'s, which under normal lighting conditions may be very hard to discern. I heard from one member who said it didn't work at all for them, but also from a few others who were amazed at how this helped them see details that had previously been uncertain.

Of course, one of the complaints about this method has to do with how quickly one tires of holding a stamp up with tongs in front of a strong light for any length of time. Well, just recently I came across a handy little item in a Black's Photography store that makes the whole process one heck of a lot easier! It's a small, compact, portable viewer intended for viewing slides and negatives, but it works beautifully for stamps as well! The unit measures 6¼ X 5¼ X 1½" and has a frosted glass platform measuring about 4 X 5". Its light source is a small fluorescent bulb that operates on four 'C' batteries, or a 6V AC adapter. While it appears rather dim initially, it works extraordinarily well! You can lay out several stamps on the platform and set your magnifier right on top of them [I use a 10X glass that has a clear plastic base - you place it over the stamp and it's prefocused]. Or you can use your hand lens almost as easily, although with the former, both hands are free to write, sketch, or whatever. For anyone who likes my original method and who does a lot of work with those eye-straining S.Q.'s, I would highly recommend this little unit! The title on the box is **Black's MINI-VIEWER**, SKU NO. 5777, and the cost was \$25. Canadian, batteries and adapter NOT included. §

WANTED: A copy of the 1¢ S.Q. re-entry that is illustrated earlier in this Issue. Any condition, as long as details are clear. R. Trimble §