

# Canadian Re-entry Study Group

Ralph E. Trimble  
P.O.Box 532, Stn. 'A'  
Scarborough, Ontario  
CANADA M1K 5C3

Whole No. 31

SEPTEMBER - OCTOBER 1987

Vol. 6 , No. 4



## A FINE MESS ---

by R. Trimble

Isn't this a terrible thing to have happen to a 6¢ S.Q. - or ANY stamp, for that matter? Not only are almost all vestiges of perforations at the top completely missing, but half of those from the bottom are gone too! Having suffered such a 'trimming', it was then subjected to some sort of scrape or adhesion that lifted off patches of ink in front of and behind the Monarch's eye. Even without these faults, the horrible centring would make this a rather undesirable stamp to most collectors.

Frankly, I'm quite surprised that it has survived some 90 years in this condition - you can see it's clearly dated [18]97 - without ending up in the old 'circular file'!

So why hasn't it? And why was I actually **THRILLED** to add this mess to my collection? Turn the page and find out! [Cont'd]

## A FINE MESS --- [Cont'd]



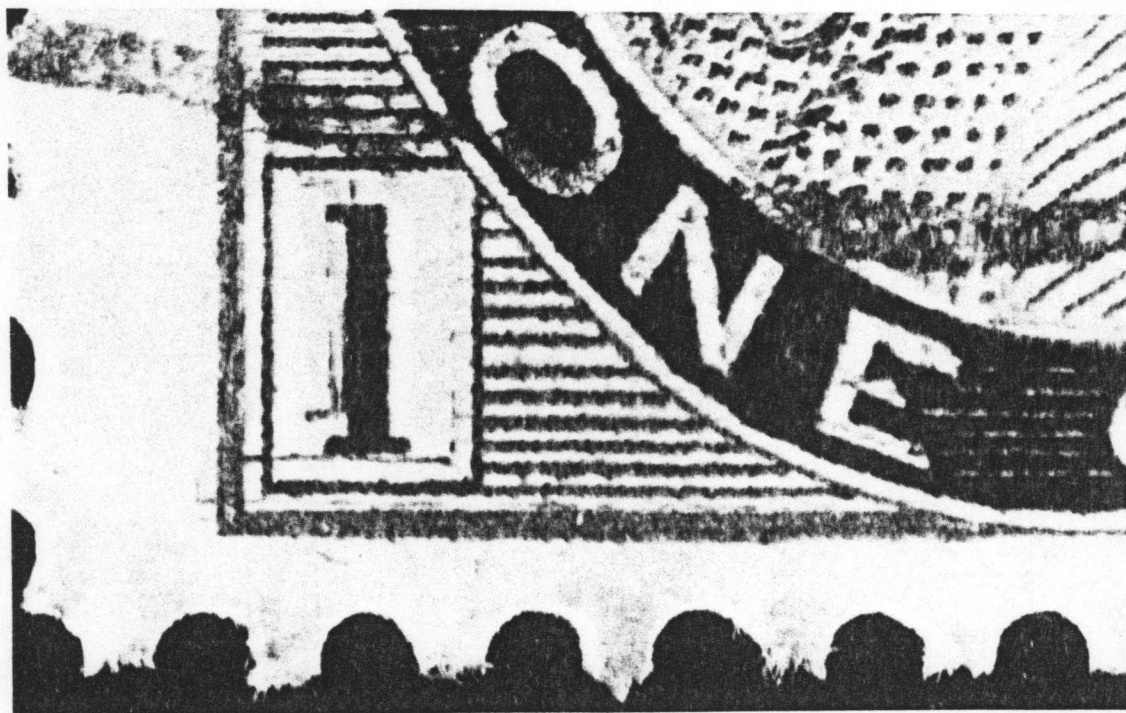
Well, **NOW** the reason is clear, isn't it? To quote John Jamieson of Saskatoon Stamp Centre [Thanks again for directing the owner of this stamp to me at CAPEX, John!], this **HAS** to be "the **WORST** possible copy of this classic!!" "How could all of this **HAPPEN** to such a stamp?!" he commented in amazement! Well, I don't know how fate decided that this copy of the "most remarkable variety of Canadian stamps" [Boggs p.297] should end up in this sad condition, but I **DO KNOW** that if it hadn't, and this had been a sound copy, it **NEVER** would have ended up in **MY** collection! [I could **never** have afforded a sound copy!] So, despite its wretched appearance, I am **ELATED** to actually own a copy of the 5¢ on 6¢ Re-entry!!! I never dreamt that I would own a copy of this rarity!! **WOW!!!**

Note that to the right of the 'G' and above the 'E', there is evidence of the 'ball' from the U.R. of the 5¢ design! The left 'ball' is well-documented as it appears, on well-centred copies, in the left margin and has been illustrated often in the mass of literature that has been written on this stamp. However, I don't recall ever having seen mention of the **right** 'ball' in any of these articles! This is only a small point, but one that I find interesting. I **AM** quite fortunate that the important areas of my stamp containing the 5¢ elements **ARE** exceptionally clear and the right 'ball' is definitely visible!

Needless to say, the addition of this stamp to my collection really 'made' my visit to CAPEX, not to mention my entire summer!

A 'MAJOR' RE-ENTRY ON THE 1¢ NUMERAL

by R. Trimble



Way, way back in Newsletter #3, Jan.'82, Dr. Mike Sandbuehler presented his Classification of Re-entries on the 1¢ Numeral. In that article he presented what he classified at that time as **THE** Major Re-entry and his mat showing the details was on the front page, Fig.1. Ever since seeing that mat [and a slide Mike sent me of his copy] I have been intrigued by the 'slanted' left '1' and have been hoping a copy would eventually reside in my collection. Well, this past July my wish came true! While searching through a huge bulk lot of stamps that Frank [Centerline, TOPICS] Waite sent to me to check for re-entries, I finally turned up a lovely sound copy of this spectacular re-entry!

Here you see the L.L. corner with that fascinating 'slanted 1'. The odd thing is that the bottom line of the LNB runs horizontally along the bottom of the main '1' and is not at all slanted! On examining the RNB, we also find a doubled '1' and the bottom line of the RNB **ALSO** runs horizontally along the bottom of the right '1'! Well, what I had originally thought to be a 'twisted transfer' turns out to be somewhat of an 'optical illusion' caused by the 'selected' doubling of only certain portions of the left '1'! A further clue is that the 'slanted 1' is far too narrow when compared to the 'normal' 1, so only part of it is duplicated.

Considering the multitude of terrific Misplaced Entries on the 1¢ Numeral that have been turning up over the last few years, it is difficult to decide just **WHICH ONE** to label '**THE**' Major Re-entry, but this one sure is a beauty!

[Incidentally, Hans Reiche has informed me that not all of the terrific Misplaced Entries on the 1¢ Numeral that I have presented here over the last few years are indeed 'new' finds! Hans reports that some of them were written up some years ago in various philatelic journals or magazines! I have a very extensive library of re-entry materials, but obviously do not have these particular articles and unfortunately Hans no longer has them in his possession either. If any member has

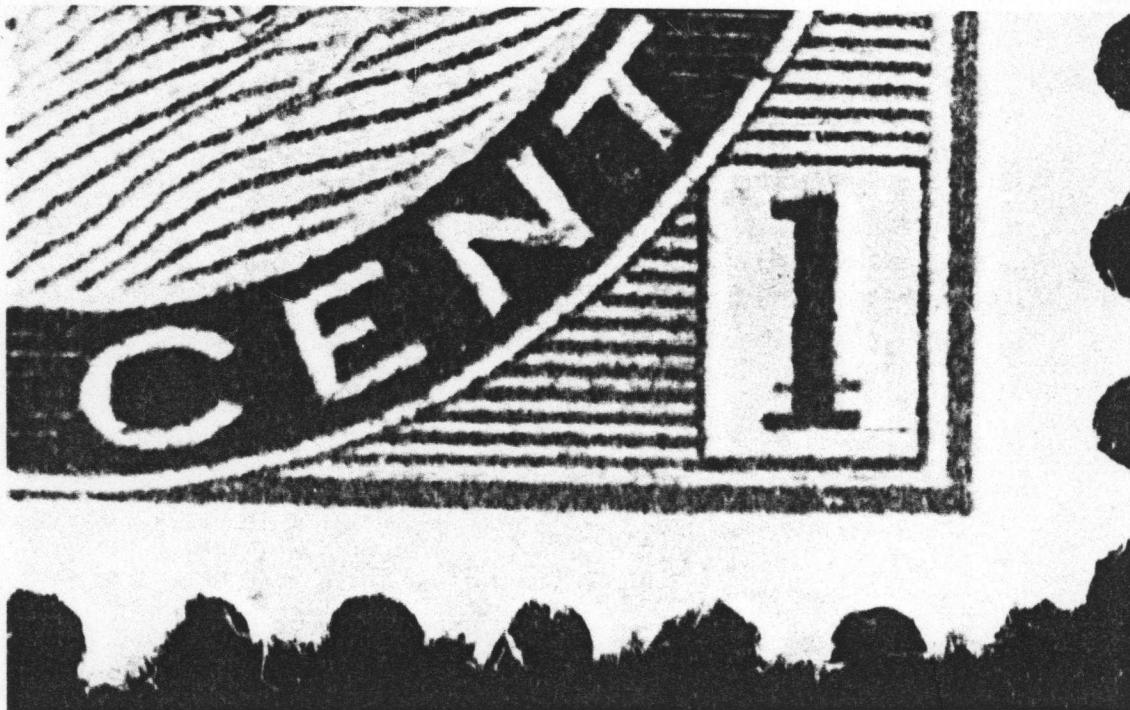
BILL MACDONALD REPORTS:

Bill recently reported four 1¢ KE7's with re-entries along the bottom as seen in Marler on p.51, two of which also had strong retouches on the band above 'A P'. Also included was a copy of the Major Re-entry from 1R79 on the ½¢ M.L. and a block of six of the 2¢ carmine Numeral with two nice re-entries on two of the bottom stamps.

The most interesting to me, though, was a re-entry of Major proportions on the 1¢ M.L.! Strong doubling is found on the entire upper portion of the stamp including CANADA POSTAGE. The accompanying photo shows the U.L. corner with 'CANADA' and the upper framelines strongly shifted. The stamp is the third in a nice strip of three, the first two showing no signs of re-entering.

Many thanks for the report Bill, and it was great to hear from you again.

-----

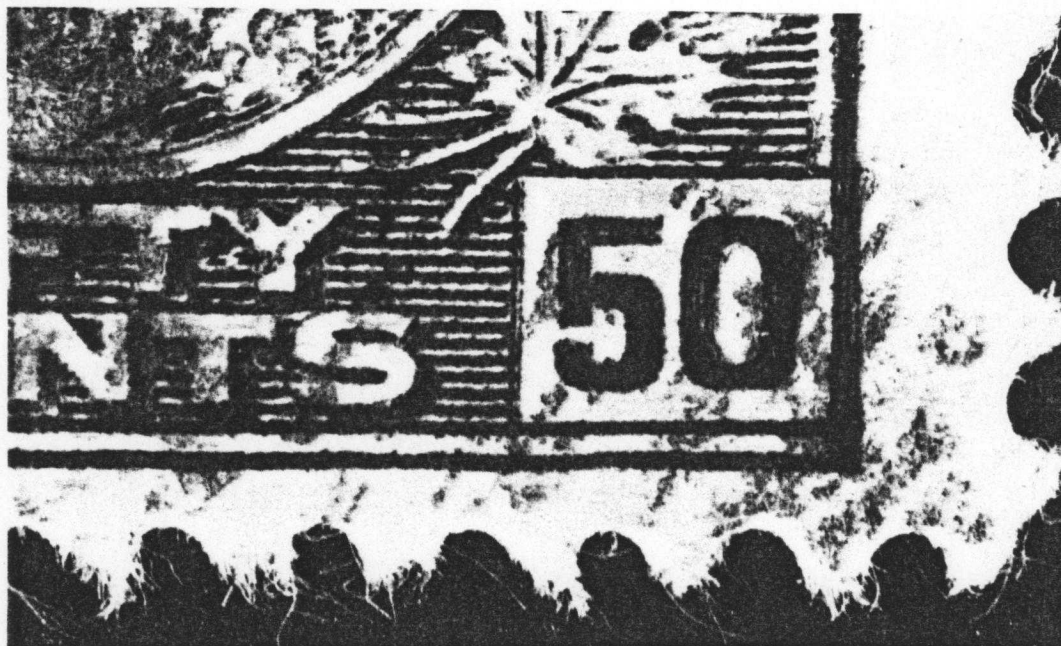
CATHLEEN JONES REPORTS:

Cathleen has discovered another beautiful example of a Misplaced Entry on the 1¢ Numeral. There are details all over the design of this stamp that illustrate the re-entry, but I find the RNB to be the most interesting. The shaft of the right '1' boldly slashed by the base of the misplaced '1' is so clear that it can be seen with the naked eye! I was so pleased to find a copy of this stamp myself during the summer!

Thanks for sharing your 'find' with us, Cathleen!

A RE-ENTRY ON THE 50¢ ADMIRAL

by R. Trimble



Re-entries on this stamp are scarce. Here doubling is seen in the left side of the RNB, in the leaf above, and in the oval next to the leaf. 2L82.

A NEW VARIETY ON THE 15¢ LARGE QUEEN

by Dr. Jim Watt

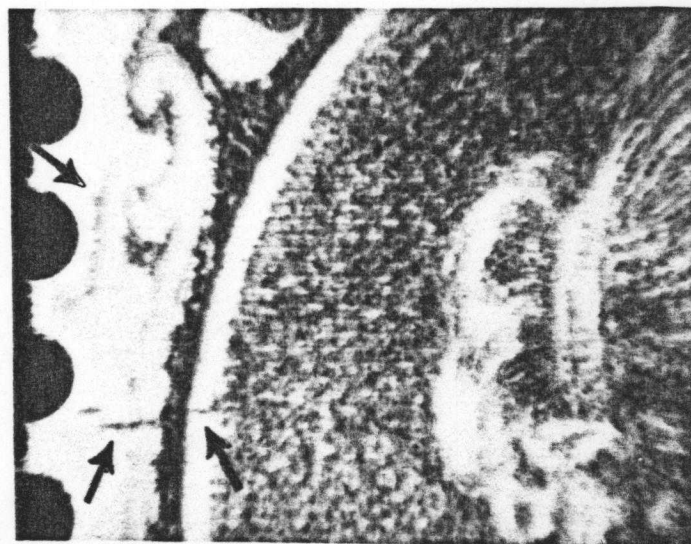
I am writing to notify the group of a major variety on the 15¢ Large Queen. While not a 're-entry' as such, it is interesting enough that it may well receive catalogue status. [Editor's Note: At first I was hesitant to run this article in the Re-entry Group Newsletter, but decided to do so as a favour to Jim since he was kind enough to write it up and submit it to me.] As the original discoverer, I thought I'd better get around to writing it up before someone else does.

There is a "cracked plate" variety on the 15¢ Large Queen in the west oval. It is on stamp #65 in the sheet and is so large that it actually extends into the east margin of stamp #64. However, stamp #65 contains the major component of the variety.

I discovered this variety shortly after graduating from medicine in 1983 and have both mint and used examples. I have not been able to acquire any more since moving west to Saskatoon. Recently, though, I spotted the variety in an auction catalogue, but as I couldn't view the lot and didn't have the money to buy it anyway, I told a dealer about it. [This well-known long-term dealer is a good friend to whom I certainly owed the favour for all my hours of searching through his stock over the years.] As it happened the dealer bought the block, and since has acquired multiple other used copies. He has also shown these to the authorities at Canada Specialized who will quite likely list it shortly [perhaps in the 1989 edition].

I am enclosing slides I took as long ago as Jan. 1984 that show the variety nicely. [Photos made from two of Jim's slides are shown below.] I've seen it on all later printings and as far back as the 1887 blue shade and have been told of the existence of a cover dated as far back as 1878, though I have not seen it myself.

I hope the group members can pick up a few copies for themselves before it is listed in the catalogue and the price goes up.



A FEW NOTES ON THE ONE HALF PENNY

by R. Trimble

My two visits to CAPEX in June resulted in the absolute confirmation that the stamp I wrote about in the Jan.-Feb. '86 issue [#22] and that Dr. Jim Watt followed up on in May-June '86 [#24] is without a doubt from position #72, and not #120 as I had originally suspected. In both an exhibit and at Jim Hennok's booth, I was able to examine blocks of 20 from the L.R. corner of the sheet that clearly showed my stamp in the U.R. corner, position 72, and the other Major in the L.R. corner, position 120. So, Jim Watt was certainly correct in his conclusions! [Not that I ever doubted him!]

In the same exhibit I was also able to examine another large block of the ½d and was very pleased to find two beautiful Major Re-entries in positions 22 and 58! Position #22 showed strong doubling in 'CANADA POST' and 'ONE', while #58 showed a strong shift to the right which resulted in a fascinating area of cross-hatching on the left in the white oval beside 'CAN'! Strong doubling was evident throughout the design, but this latter area was particularly intriguing! This re-entry is truly a beauty and one which I am going to be searching for intently!

Interestingly, I saw all of the above positions [72, 120, 22 & 58] in blocks in the colour of issue and in black [proofs], and the colour of issue re-entries in no way compare to the beauty of the same positions in black! Obviously the contrast of the ink against the white of the paper would be a large part of the reason, but even the red lines on a crisp, clear proof were not nearly as sharp and clear as the black! This was particularly obvious in the cross-hatching next to 'CAN' in position #58 that I described above. In the colour of issue it was not nearly so impressive!

And finally, can anyone identify the specific plate position of the "typical re-entry" that Boggs illustrates in Fig. 31 on p.157 of his book? The text on p.158 insinuates that it is one of positions 62, 72, 84 or 96. We know it is not 72 and Jarrett's description of #84 comes closest, but there are discrepancies. I purchased a nice copy of a ½d at CAPEX [albeit with a pen cancel] that has all the lines of the Boggs' mat, but with doubling in most of the letters [Boggs shows only 'O' & 'Y']. Any ideas?

-----

MEMBERSHIP REPORT

I would like to welcome our newest members:

- #49 Michael Redwood, 52 Harold Court, Hamilton, Ontario, Canada L8S 2R9
- #50 Jim A. Hennok, 185 Queen St. East, Toronto, Ontario, Canada M5A 1S2

Reinstatement

I am pleased to welcome Bill MacDonald [#7] back to our group! I received a letter, cheque and report [in this issue] from Bill shortly after mailing the last issue in which his name was one of those removed from the membership list. Thanks Bill! Very glad to have you back with us.

Change of Address

HANS REICHE REPORTS:

The misplaced entry on the 1¢ KE7 seen on the left below was found recently in a bundle. It is not a really strong one, but marks can be seen in various places.

On the right is a re-entry I found on a post card. It is a Webb P33n, a 2¢ carmine Admiral. I am sure there must be more on the post cards and I shall have a look through all of mine.

LATE AGAIN --- AND WITH GOOD REASON !!

Following elimination of a July - August issue [as explained in the last issue], you were all likely expecting this issue somewhere around the beginning of October. Well, as some of you may be aware, some 9,600 Elementary teachers in Metropolitan Toronto went out on a legal strike on September 22nd. As I type this we have been out for three weeks and we are still uncertain as to just when a settlement will be reached. Since I am not allowed to set foot on school property during the strike and the photocopier I use is in the office, it should be clear why I was unable to publish this copy of the Newsletter on time. It should also be clear that since you are reading this, the strike has ended [though I wish I knew just when that will be]. I have already started work on the Nov.-Dec. issue and hope to have it in the mail around the beginning of December. Thank you for your patience! Sorry for yet another delay, but this one was completely beyond my control.