



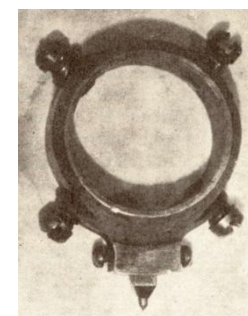
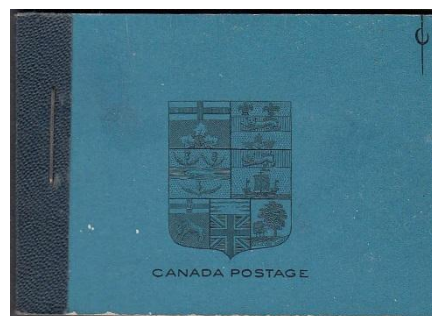
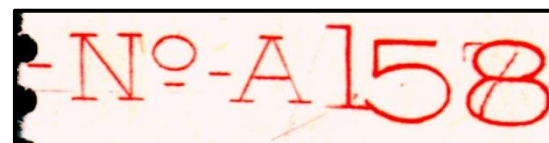
Admiral Study Group Meeting

CPS 2022 BNAPEX
Friday, 2 September 2022

Andrew Chung, Chairman & Treasurer
Leopold Beaudet, newsletter editor

Discoveries and curiosities

- Scarcest Admiral stamp on cover
- Compass arc varieties
- Booklet covers with guidelines
- Letter carriers' strike
- Birch bark post card
- Retouched left crown
- "SPECIMEN" overprints
- Fake coils
- Re-entries
- Guide dots



Scarcest stamp on cover or piece?

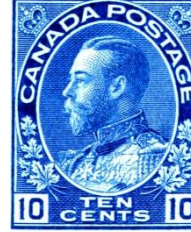
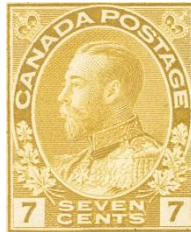
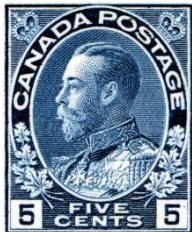
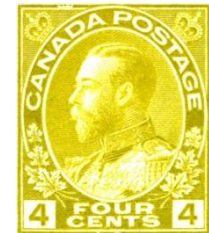


Scarcest stamp on cover or piece?

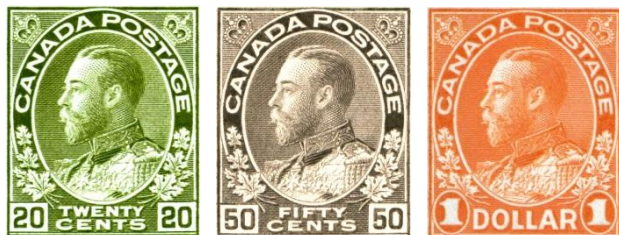


- Eliminate the low values
- Eliminate War Tax not intended for postage

Scarcest stamp on cover or piece?

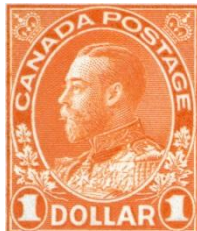
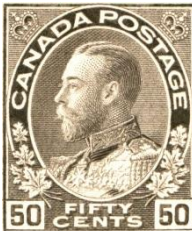


Scarcest stamp on cover or piece?

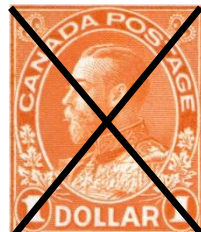


- Eliminate the Empire and UPU rate values
- Eliminate the registration values

Scarcest stamp on cover or piece?



Scarcest stamp on cover or piece?



- Eliminate the values used for bulk payment and money packets

Scarcest stamp on cover or piece!



- 7¢ red brown probably the scarcest
 - Make-up rate
 - Issued 12 Dec. 1924
- 5¢ violet
 - Make-up rate
 - Issued 2 Feb. 1922
- 20¢ olive green
 - Bulk circular payments
 - Registration + UPU rate (1921-1925)
 - Make-up rate

Compass arc varieties – 1¢ green

- Vertical arcs mostly
 - Mostly in row 1 or 10
 - Left or right stamp margin
 - Sometimes with guide dot
- Purpose unknown
- Not in Marler
- On 1¢ green
 - 29 arcs on plates 53-79
 - 4 arcs on plate 73 alone

Two different arcs. Left stamp has hairlines. Right one doesn't. Top of arc higher on left stamp. Bottom of arc lower on right stamp.



Courtesy Randall W. Van Someren

Compass arc varieties – 1¢ green



Arc curves inward
towards stamp



79UL10/1 (79UL91)
Arc curves inward; shifted down to
bottom margin; goes through guide dot

Compass arc varieties



2¢ carmine
39UL1/2 (39UL2)
Arc in left outer oval;
curves inward



5¢ blue
14LL10/1 (14LL91)
Arc in left margin; curves
inward; goes through guide dot



50¢ black
1R1/1 (1R1)
Arc in left margin;
curves outward

2¢ carmine courtesy Bill Burden
5¢ blue courtesy Eastern Auctions Ltd.

Compass arc varieties



3¢ brown
Horizontal arc near type B
lathework

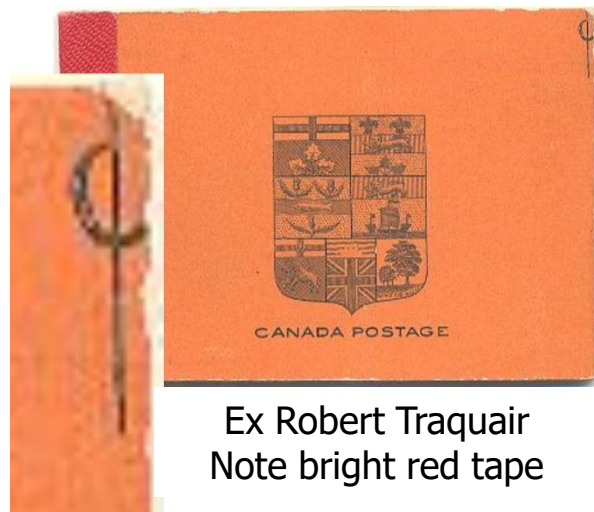
Courtesy Saskatoon Stamp
Centre



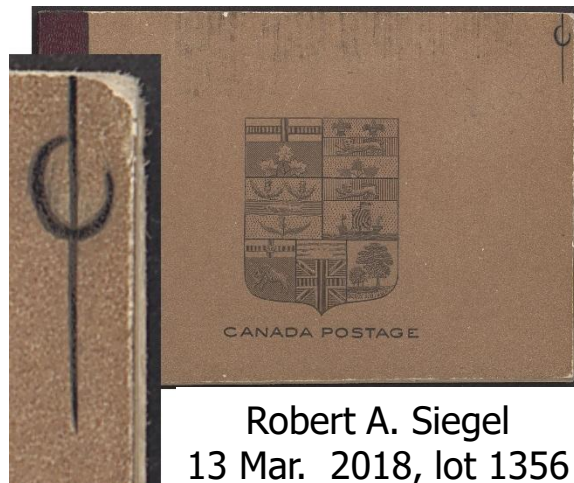
3¢ brown
Horizontal arc above guide arrow
and type D inverted lathework

Courtesy Ian Kimmerly Stamps

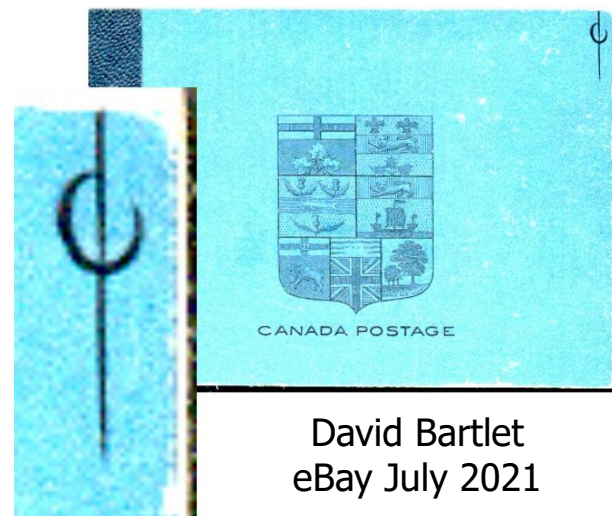
Booklets with guidelines – newest discovery



Ex Robert Traquair
Note bright red tape



Robert A. Siegel
13 Mar. 2018, lot 1356
CA\$2,163



David Bartlet
eBay July 2021

Courtesy David Bartlet

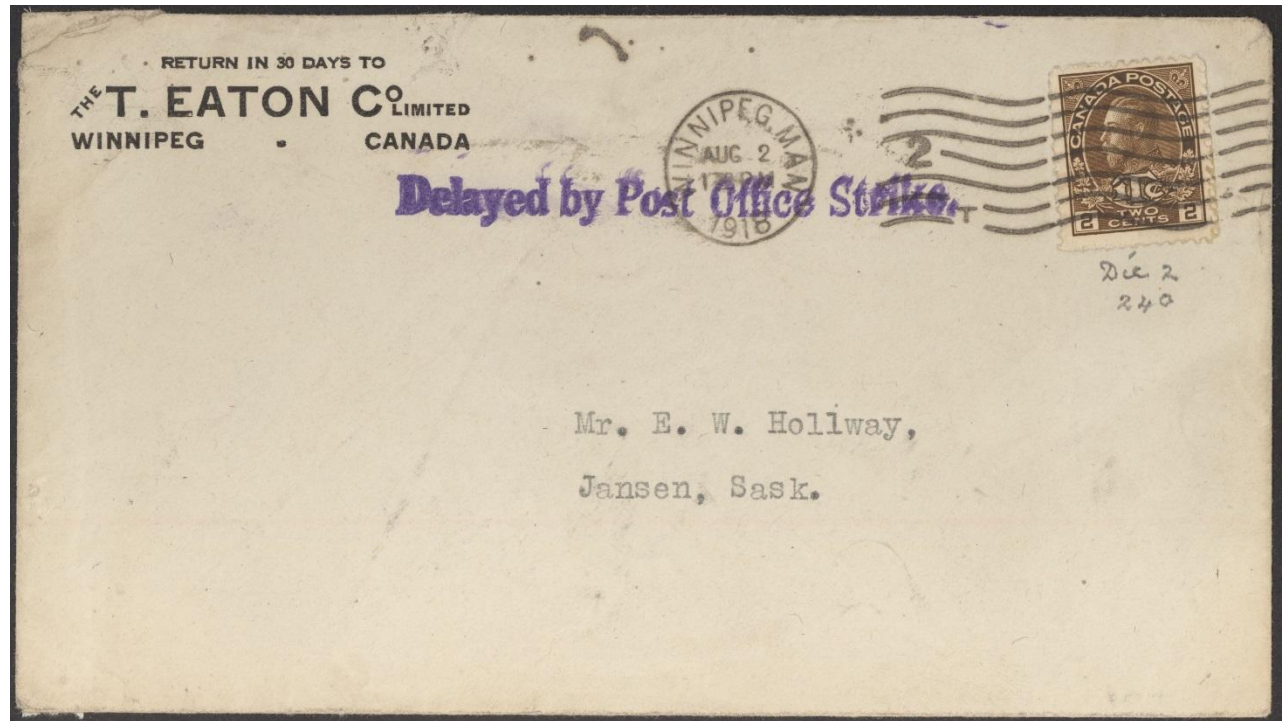


Newest discovery
eBay Aug 2022

Type 2
Guideline with circle

First letter carriers' strike – 1918

- First strike of the Federated Association of Letter Carriers (FALC)
 - 22 July to 2 Aug. 1918



Last day of postal strike – 2 August 1918
Postal marking: "Delayed by Post Office Strike"

Courtesy Andrew Chung

Admiral Study Group Meeting
Copyright © 2022 by Leopold Beaudet

1924 strike of clerks and letter carriers

- Clerks and letter carriers joined forces to strike in 1924



"Carried by C.P.R.
during Postal clerks strike
June 1924"

Source: nosaj0009 (eBay)

Birch bark post card

- From
Minnehaha Bay,
Port Carling,
Muskoka, ON
- JUL 3 / 14
- “WAY LETTER”
- Domestic post
card rate: 2¢
 - Underpaid 1¢
 - Charged 2¢
postage due



Courtesy Andrew Chung

Left crown retouch – 7¢ bistre, 2L76



Defective transfer. The retouch was made AFTER plate 2 was put into production but before 2 Aug. 1912.

Ex Sandy Mackie

Admiral Study Group Meeting
Copyright © 2022 by Leopold Beaudet

Left crown defective transfer – 7¢ bistre, 2L76



- Second copy of defective transfer before retouching
- This copy is dated!
 - [M]AY 4 / [1]912
- Stamp was retouched probably after April 1912 but before 2 Aug. 1912

Courtesy Art Halpert

Left crown retouch – 2¢ carmine, 3 different



Crudest retouch

Medium hairline crack

113UR3/8 (113UR28)



Small jewel under orb

Long hairline crack

113UR4/8 (113UR38)



Large jewel under orb

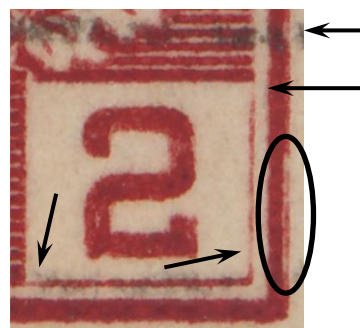
Short hairline crack

113UR5/8 (113UR48)

Courtesy Bill Burden

Design type R26 (plates 113-114)

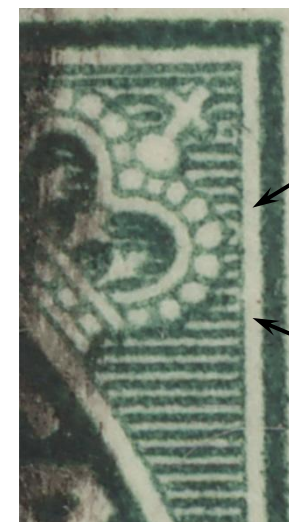
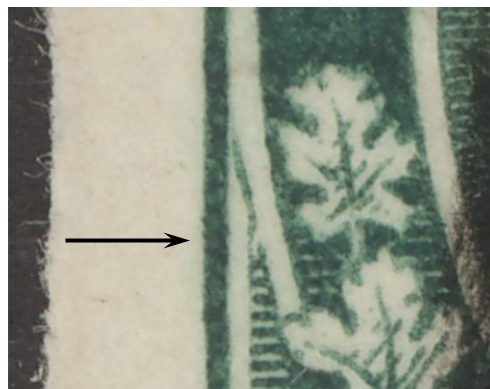
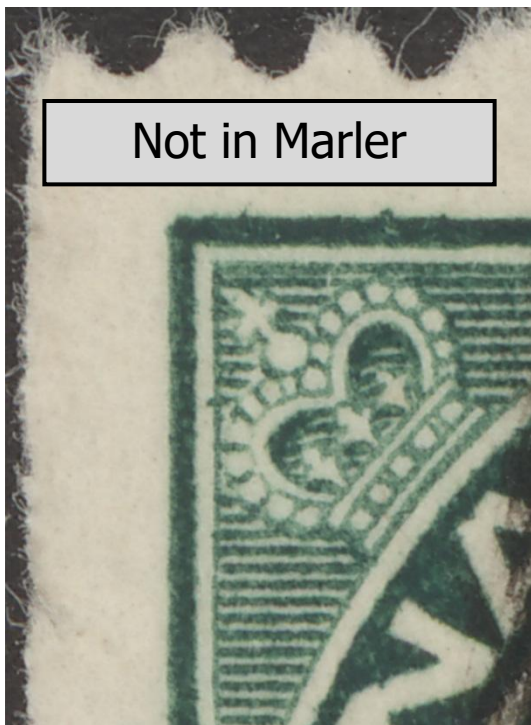
Not in Marler



Same plate, same column,
rows 3, 4, 5

Admiral Study Group Meeting
Copyright © 2022 by Leopold Beaudet

Left crown retouch – 1¢ green, 136UR81



- Retouch to left side of crown and upper part of left vertical line
- Straight edge, left side
- Design type R4
 - Generic type
 - Break in lower left frame junction line below top of spandrel
- Plate 136 has a break in upper right vertical line between lines 14 and 16
 - Common to other plates

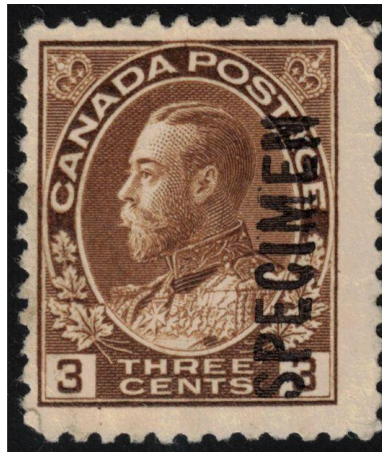
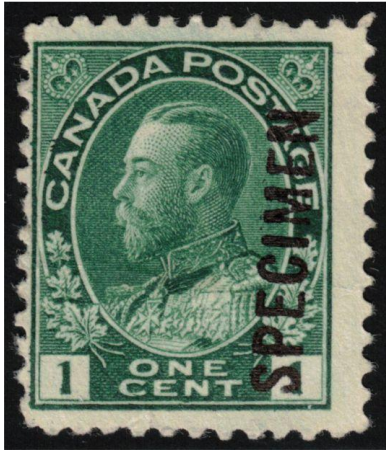
Left crown retouch – 3¢ brown



- Retouch to upper part of crown and upper part of left vertical line
 - Position unknown

Courtesy Bill Burden

SPECIMEN overprint



Courtesy Art Halpert

Admiral Study Group Meeting
Copyright © 2022 by Leopold Beaudet

Wing margin varieties



Courtesy Art Halpert

1¢ endwise coil with large holes – fake

- The large holes are misshapen and too small
- Wrong design type
 - Should be ERR2 or ERR3
 - Is actually ERR6 or ERR7



Fake



Genuine

Courtesy Art Halpert

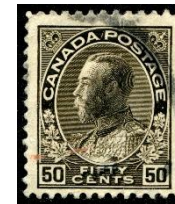
2¢ green endwise coil – fake

- Fake
 - Re-engraved die
 - Dry printing
 - Type RE1
- Genuine
 - Retouched die, 2nd state
 - Wet printing
 - Type R(2)5
- Looks like both sides were trimmed



Courtesy Art Halpert

50¢ re-entry 2L82

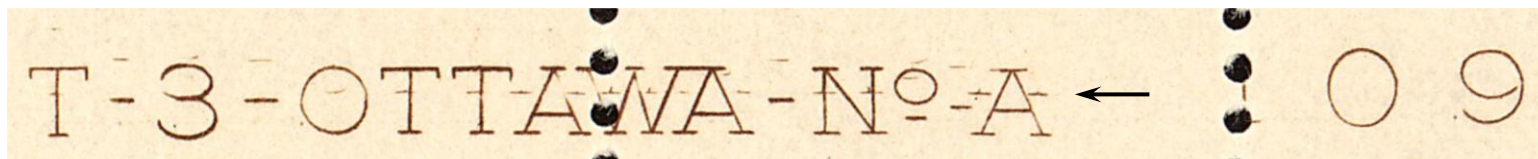


- Doubling
 - Horizontal lines at top of UL spandrel
 - Ends of the horizontal lines in the LR
 - Left of the right numeral box
 - Right leaves 1 and 3
- Frame thicker than normal
 - Top of left frame
 - Bottom of right frame



Courtesy Jim Jung

3¢ brown plate 109 imprint – shifted entry

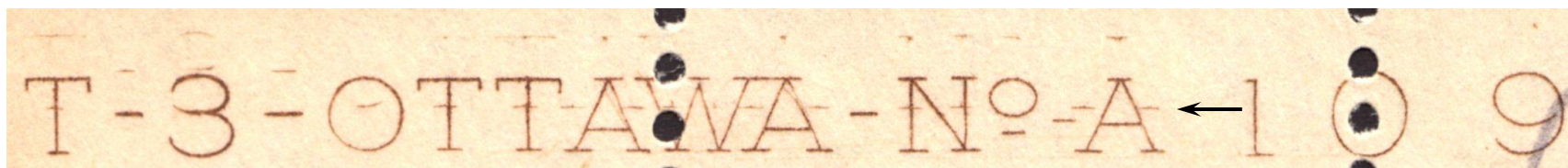


Remnants of T-3-OTTAWA-No-A shifted up.
Perfs go through "1" in "109".
Upper right pane.

3¢ brown plate 109 imprint – shifted entry



Courtesy Earl Noss



Remnants of T-3-OTTAWA-No-A shifted up.
Perfs go through "0" in "109".
Must come from upper left pane.

2¢ carmine plate 157 & 158 imprints

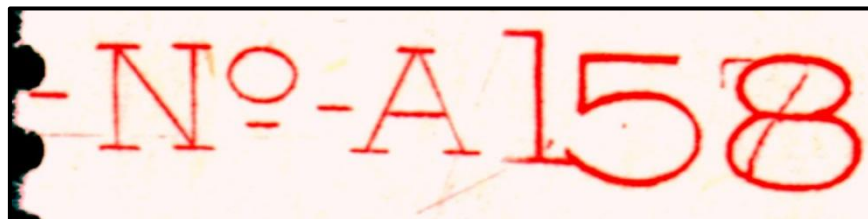


158UL



158UR

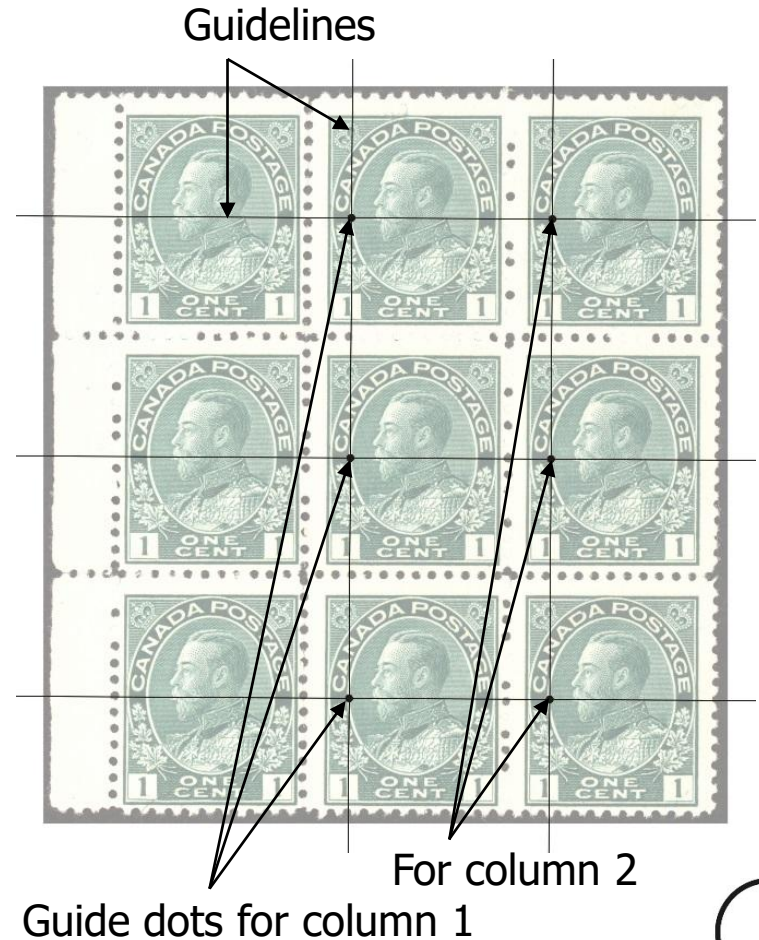
Foreign entry!
Marler illustrated the
"re-entry", but did not
comment on the "7".



Two "7"s!

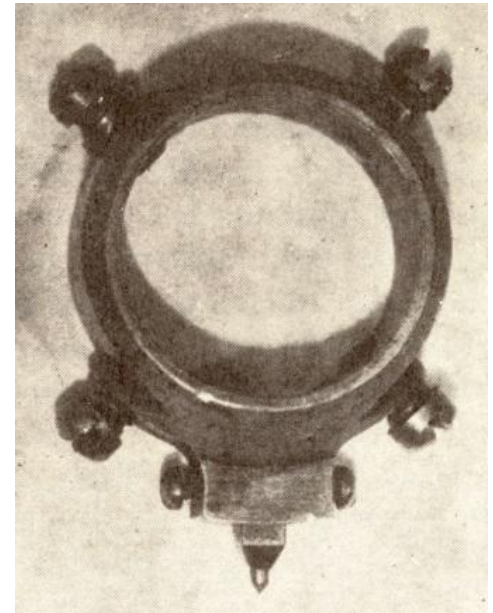
Guide dots & plate making

- Siderographer lays out stamp position on plate:
 - Scribes a grid of horizontal and vertical guidelines, one for each row and column of stamps
 - Punches a guide dot at the intersection of the horizontal and vertical lines

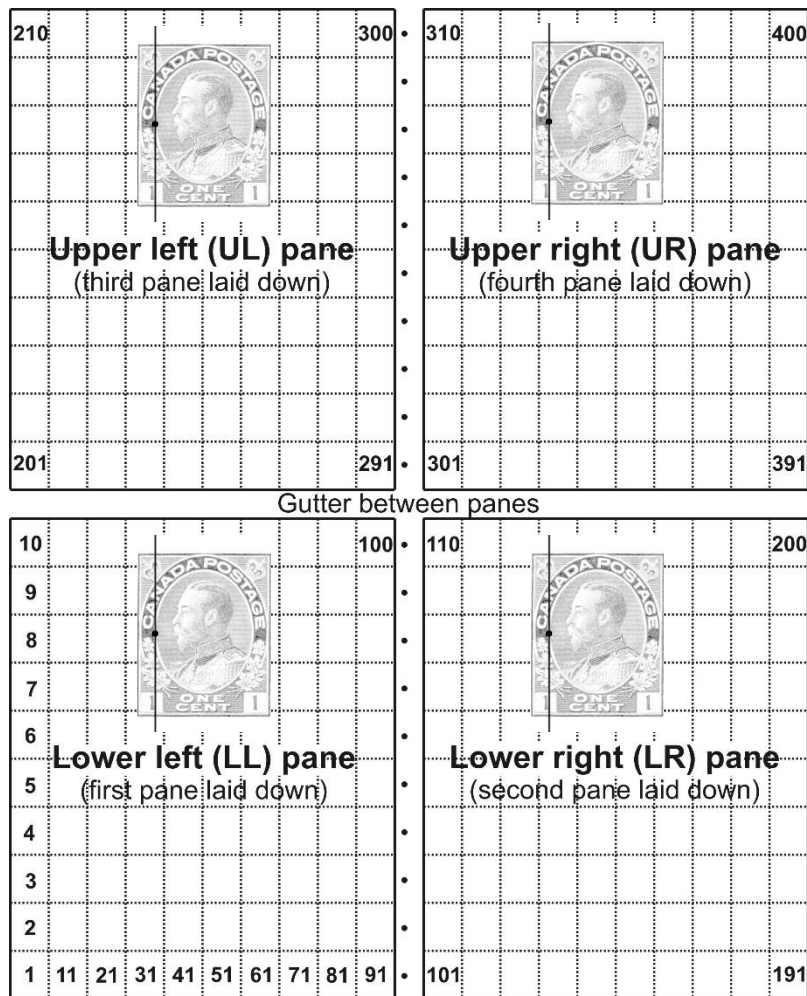


Guide dots

- Sidepoint is mounted on the mandrel with the transfer roll
 - Pointed end placed in the guide dot to position the transfer roll for each stamp



Guide dots – type B plates – B1 layout

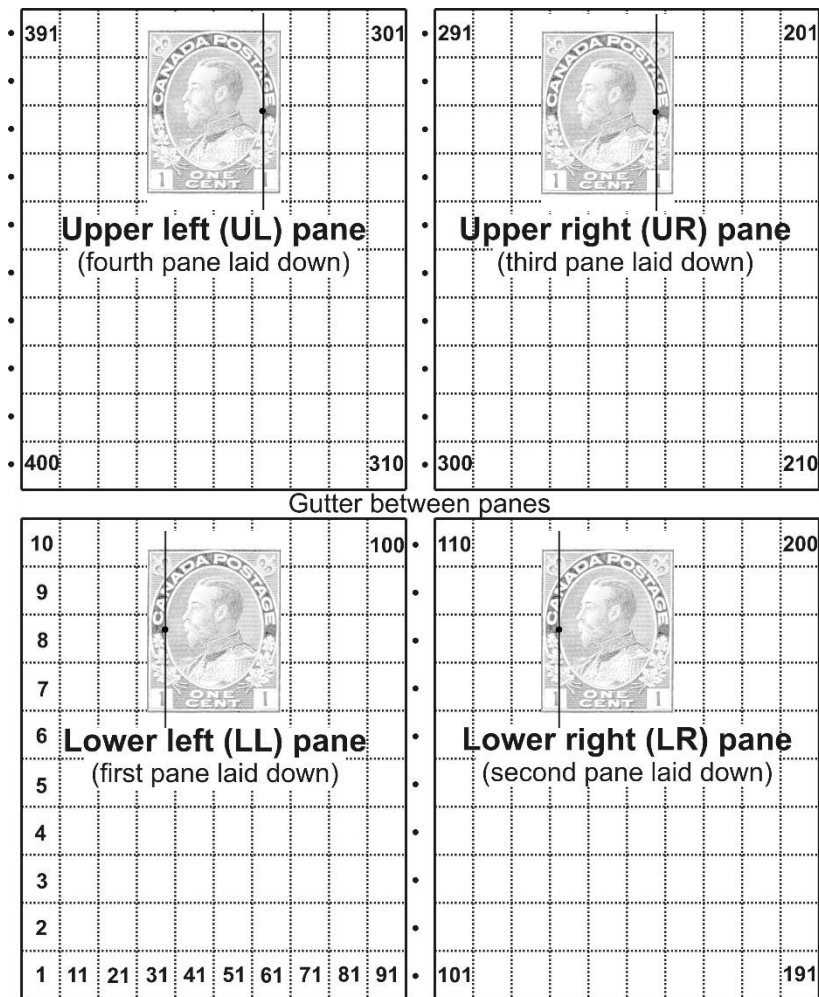


- Plate laid out pane by pane
 - Sequence: LL, LR, UL, UR
- Pane laid out column by column
 - 1st column: column 1
 - 1st stamp: bottom stamp of column 1
- Guide dot and vertical guideline may be visible on:
 - Left side of stamps in all four panes

Only guide dots in pane margin shown

Transfer begins here

Guide dots – type B plates – B2 layout



- LL, LR panes laid out
 - Column by column
 - Start with bottom stamp in column 1
- Plate and transfer roll rotated 180°
- UR, UL panes laid out
 - Column by column
 - Start with top stamp in column 10
- Guide dot and vertical guideline may be visible on:
 - Left side of stamps in lower panes
 - Right side of stamps in upper panes

Only guide dots in pane margin shown

Transfer begins here

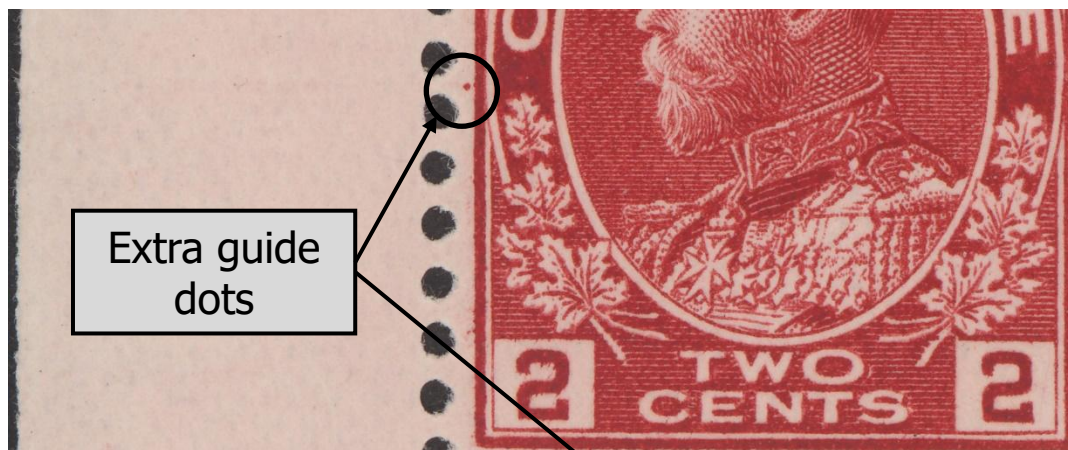
“Normal” guide dots

- Vertical position of guide dot
 - On most plates, at the midpoint of the design
 - On 3¢ brown plates 70 and 86-92, in line with the bottom frame
 - On 3¢ brown plate 93, in line with the top frame
- Horizontal position of guide dot
 - Varies from 5 to 14 mm from the frame of the adjacent stamp
 - Can appear in inner oval if distance is 5.5 to 6.5 mm



Extra guide dots on many plates

Left margin of stamps
UL and LL panes
Column 1



Right margin of stamps
UR and LR panes
Column 10



- Purpose unknown
- Not in Marler