



Admiral Study Group Meeting

BNAPEX 2016

Fredericton, NB

Friday, 30 September 2016



Queries, Discoveries, and Curiosities

- Rick Parama – suspended service cover
- Empire postcard rate
- 10¢ UPU cover
- Yohann Tanguay – 2¢ green booklet pane of 6 on horizontal wove paper
- 2¢ carmine endwise coil printings
- Randall W. Van Someren – 2¢ sidewise coil new design type
- Wet versus dry printing ... again

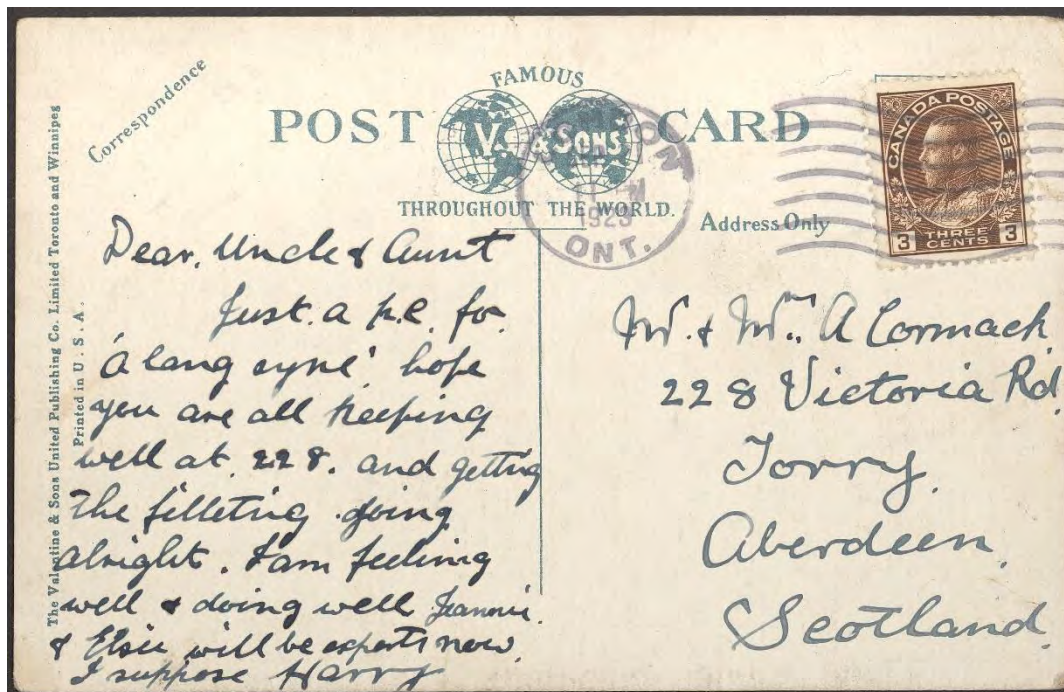
“Service suspended” cover – Rick Parama



- Cover mailed to Austria on SP 7 /14, but not delivered
 - Mailed during the early part of the Great War
- Sealed with two Official Seals because service was suspended
 - “Service suspended” term used in the Postal Guides / Supplements
- Article in *PHSC Journal*, Winter 2015-2016, discusses suspended mail covers to Germany with “Non=Transmissible” handstamp

Was War Tax ever paid on Empire postcards?

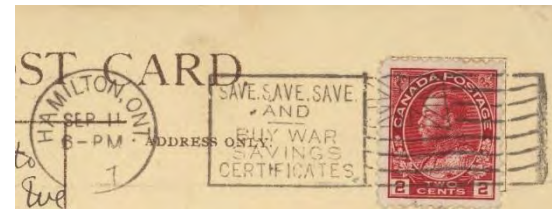
- Empire rate for postcards was 2¢ for the entire Admiral period [Steinhart]
 - Postcards to British Empire destinations with 3¢ franking are common
 - Overpaid (confusion about whether War Tax applied to postcards?)



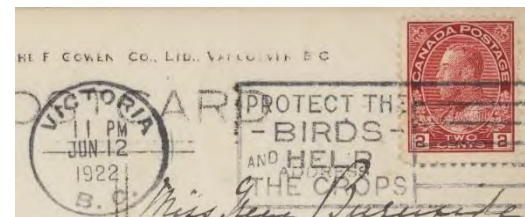
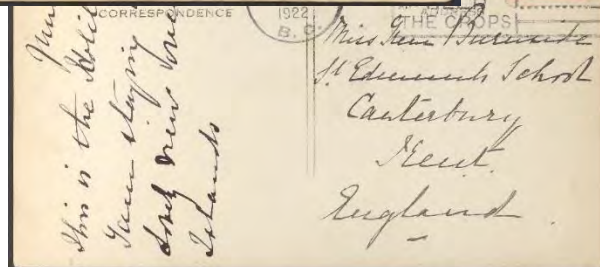
Postcard from London, ON, to Scotland with 3¢ brown postmarked SEP 21 / 1923

Was War Tax ever paid on Empire postcards?

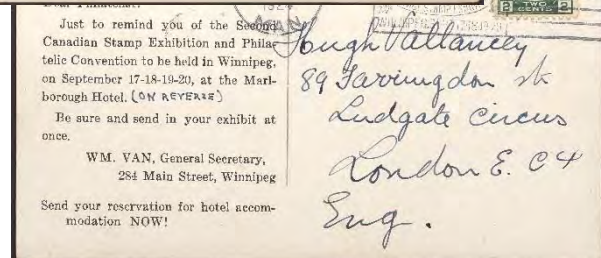
- Postcards to Great Britain paying 2¢ British Empire rate
- Dated between 1917 and 1924



SEP 11 / 1917



JUN 12 / 1922



SEP 4 / 1924

What's so special about this 10¢ UPU cover?

- Pays 10¢ rate to UPU country
- Postmarked OCT 1 / 1921
- 2¢ carmine stamps, retouched die, 2nd state, Marler type R(2)2



1 Oct. 1921 was the date the 10¢ rate came into effect

2¢ green bkt pane on horizontal wove paper

- Discovered by Yohann Tanguay, Eastern Auctions, Feb. 2016
 - Wet printing
 - Height: 20.5 mm versus 21.0 mm for vertical wove stamps



Other Admiral stamps on horizontal wove paper

- ✓ 2¢ carmine
- ✓ 2¢ green
- ✓ 10¢ blue
- ✓ 1¢ green bkt pane
- ✓ 2¢ carmine bkt pane

Yohann also discovered a 2¢ green block of 6 with type D lathework on horizontal wove paper

2¢ carmine endwise coil

- Marler's listing

P	Type	Ink	Plate	Comments	ERD
8	ERO1	N/A	C 1	Same as sheet type O8 (plates 19-20)	1913-04-17
12	ERO1	N/A	C 1	Same as sheet type O8 (plates 19-20)	1913-08-18 ¹
12	ERR2	N/A	C 2	Same as sheet type R25 (plates 111-112)	1918-01-27
12	ERR(2)3	N/A	S 154-156	Sheet Type R(2)2	> 1921-10-07 ²



Notes

1. Date reported by Hans Reiche. Too early? Next earliest date is 1914-04-17 reported by Michael Dicketts.
2. Marler apparently had just a strip of four. This design type can be found mint without much difficulty, but I have yet to see it on cover.

2¢ carmine endwise coil – Marler's types

Type ERO1

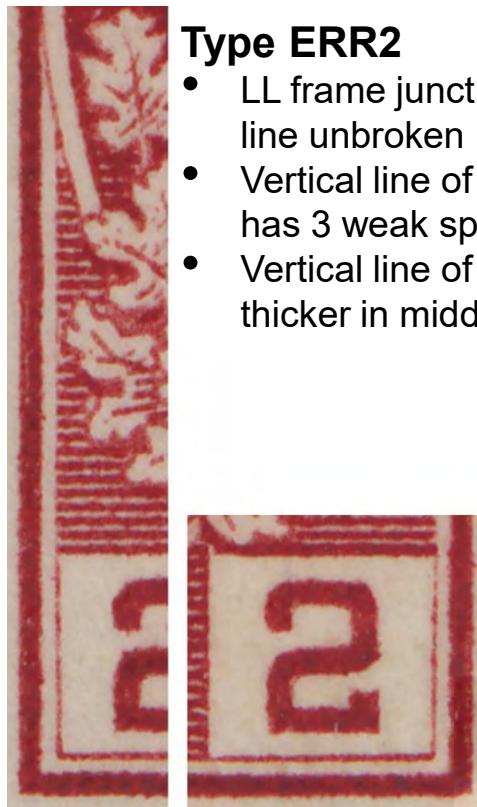
- Vertical line of RNB broken at top, middle, and intermediate point



Original die

Type ERR2

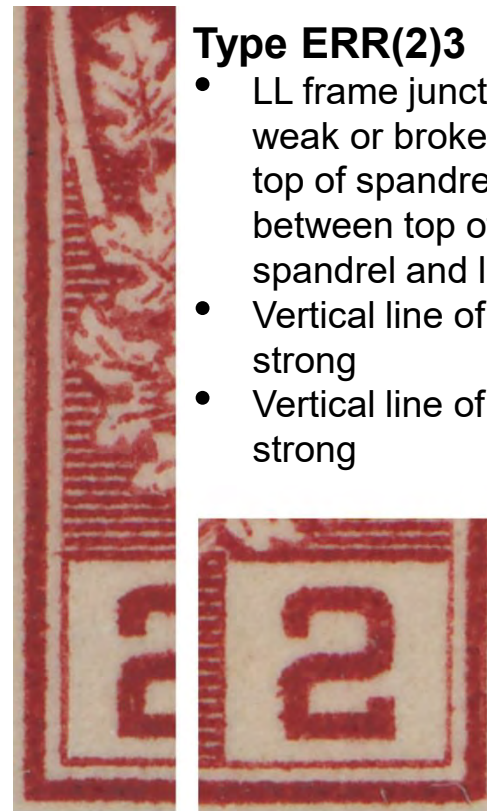
- LL frame junction line unbroken
- Vertical line of LNB has 3 weak spots
- Vertical line of RNB thicker in middle



Retouched die, 1st state

Type ERR(2)3

- LL frame junction line weak or broken above top of spandrel and between top of spandrel and line 1
- Vertical line of LNB is strong
- Vertical line of RNB is strong



Strong LNB & RNB characteristic of the retouched die, 2nd state

2¢ carmine endwise coil

- Marler's listing revised (updates in green)

P	Type	Ink	Plate	Comments	ERD
8	ERO1	NF	C 1	Same as sheet type O8 (plates 19-20)	1913-03-26
12	ERO1	NF	C 1	Same as sheet type O8 (plates 19-20)	1913-08-18
12	R4 & R5	NF	S 40-44 S 46-50	R4: mint pair + used on cover R5: used single	N/A
12	ERO1	F	C 1	Same as sheet type O8 (plates 19-20)	1917-03-02
12	ERR2	F	C 2	Same as sheet type R25 (plates 111-112)	1917-08-18
12	ERR(2)3	F	S 154-156	Sheet Type R(2)2	> 1921-10-07

- There were TWO perf 12 printings from coil plate 1, one before fluorescent ink was introduced in early 1916 and one after
- It appears sheet stamps from plates 40-44 and 46-50 were used to produce coils, **possibly around the same time the “provisional” coils were produced.** The examples examined appear to be genuine.

2¢ carmine sidewise coil type SRO1

- Type SRO1 produced from type O3 sheet stamps
- Type O3 comes from plates 9 (part) and 15 (part)
 - Plate 9: all subjects are type O3 except columns 1 & 2 of the LL pane where 16 subjects are type O5, 2 are type O1, and 2 are type O4.
 - Plate 15: columns 1 to 4 and about half of column 5 of the LL pane are type O3. The rest of plate 15 and all of plate 16 are type O6.



Type SRO1

Courtesy Randall W. Van Someren



RNB magnified



Sheet type O3

Type SRO1 = Type O3
Top of vertical line of RNB
is broken in 3 places

What sheet plate was used for type SRO1?

- Marler thought it likely that type SRO1 stamps came from plate 9, not 15, because most stamps on plate 9 are type O3
- Randall W. Van Someren found type O6 sidewise coil stamps!
 - The late Sandy Mackie had made the same discovery
 - Plate 15 (and 16?) must have been used for type SRO1 coils, NOT plate 9 as Marler thought
 - Type O6 sidewise coils are more common than type SRO1!
 - Randall's ERD: 5 June 1913



AU 28 / 13



Ex Sandy Mackie



← Type SRO?? = Type O6
← Wide break at top of vertical line of RNB
Deterioration of type O3

Marler design type crisis – problem

- 2¢ carmine endwise coil
 - How to incorporate type R4 & R5 coils into Marler's types?
- 2¢ carmine sidewise coil
 - How to incorporate type O6 coils into Marler's types?
- 3¢ brown also presents problems
 - Plate 62
 - Marler: partly type 17, partly type 18
 - Plate 62 stamps can be distinguished from types 17 and 18
 - Need to define two new types for stamps from plate 62
 - Plate 63
 - Marler: type 19 plates include 63, 71, 73, 76, 77, 102
 - Plate 63 stamps are different from the others
 - Need to define a new type for stamps from plate 63

Marler design type crisis – solutions?

- Throw out Marler's type numbering and start over?
 - What happens when the next new design type is discovered?
- Append characters to existing type numbering?
 - Type O3 sidewise coils = Type SRO1
 - Type O6 sidewise coils = Type SRO1A?
- Extend Marler's type numbering? How?
 - Sidewise coils: existing numbers
 - Original die: SRO1 to SRO4
 - Retouched die: SRR5 to SRR10 plus SRR6A
 - New original die type: SRO?
- Other solutions?

Wet or dry?



5 10 15 20

Plate 18
17.5 mm wide



5 10 15 20

Plate 21
17.7 mm wide



5 10 15 20

Plate 25
18.0 mm wide

Width variation on 5¢ violet

Identifying wet and dry printings

- Width of the design
 - PROBLEM: width of wet printings not constant; ditto dry printings
- Embossing on the back on dry printings
 - PROBLEM: some wet printings show embossed design
- Sharpness of the design
 - Can usually sort printings of the 3¢ brown just by looking at the stamp
- Shade
 - Can distinguish between wet and dry printings of the 7¢ red brown
- Marler design type
 - PROBLEM: in some cases, wet and dry occur on the same type
- Whether the gum stops short of the edge of the pane
 - PROBLEM: requires mint copies with sheet selvedge

The complete picture?

- Stamps printed by both wet and dry methods



Now is the picture complete?

- Stamps printed by both wet and dry methods – take 2



1¢ yellow

Wet	Dry	Stamp	Printing
✓	✓	1¢ yellow	Die I, retouched
	✓		Die II
✓	✓	1¢ yellow sidewise coil	Die I, retouched
	✓		Die II
✓		1¢ yellow bkt pane 4	Die I, retouched
✓		1¢ yellow bkt pane 6	Die I, retouched



2¢ green

Wet	Dry	Stamp	Printing
✓	✓	2¢ green	Retouched die, 2 nd state
	✓		Re-engraved die
✓		2¢ green sidewise coil	Retouched die, 1 st state
✓	✓		Retouched die, 2 nd state
✓	✓		Re-engraved die
✓		2¢ green endwise coil	Retouched die, 2 nd state
✓		2¢ green bkt pane 4	Retouched die, 2 nd state
✓		2¢ green bkt pane 6	Retouched die, 1 st state
✓	✓		Re-engraved die



3¢ brown

Wet	Dry	Stamp	Printing
✓	✓	3¢ brown	Die I
✓		3¢ brown sidewise coil	Die I
✓		3¢ brown endwise coil	Die I
✓		3¢ brown bkt pane 4	Die I



3¢ carmine

Wet	Dry	Stamp	Printing
	✓	3¢ carm	Die I
	✓		Die II
✓		3¢ carm sidewise coil	Die I
	✓		Die II
	✓	3¢ carm perf 12x8	Die II
✓		3¢ carm bkt pane 4	Die I



The other values

Wet	Dry	Stamp	Printing
✓	✓	4¢ bistre	
✓		5¢ violet	Original die
	✓		Re-engraved die
✓	✓	7¢ red brown	
✓	✓	10¢ blue	
✓	✓	20¢ olive green	
	✓		Plate 9 – retouched UR
✓	?	50¢ black	Original die
	✓		Re-engraved die
✓	✓	\$1 orange	



Hans Reiche claimed there was a dry printing of the 50¢ original die



Revisions

1. 2023-11-01 Slide 20: the 2¢ green booklet pane of 6, retouched die from plates 19-20, was listed as being wet and dry printed; however, it exists printed by the wet method only. The 2¢ green booklet pane of 6, re-engraved die, was listed as being dry printed only; however, plates 21-22 were printed by both the wet and dry methods.