



Admiral Study Group Meeting

BNAPEX 2015
Niagara Falls, ON

Queries, Discoveries, and Curiosities

- Bill Burden – 2¢ carmine booklet pane with marks in right inner oval
- 3¢ brown re-entry 29UR20
- 3¢ brown misplaced entry 82LR47
- ERD
- Neither snow nor rain nor ... holidays
- 2¢ carmine ... imperf?
- 2¢ carmine endwise coil
- 1¢ green experimental coil

2¢ Carmine Bkt Pane – Marks in Right Oval Discovered by Bill Burden



Stamp
2/2

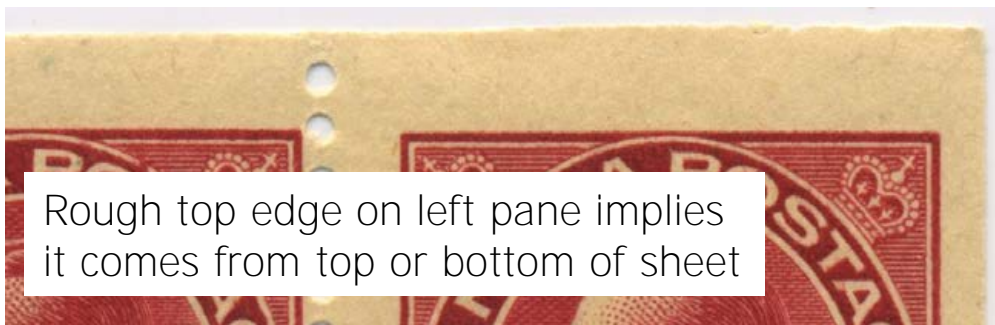


Stamp
1/2



Stamp
1/1

- Similar marks
 - Different panes
 - Different stamps
- Type BR6
 - Plates 17-18



Rough top edge on left pane implies
it comes from top or bottom of sheet

Panes 1 and 2 courtesy Bill Burden

3¢ Brown Re-entry 29UR20



- Minor re-entry and retouch

- Not in Marler

There are **117** 3¢ brown plates. Using the proofs at Library and Archives Canada, how many stamps do you need to examine to plate this one?

How about ... just TWO!

Shape of vert line of LNB

◆ Type 7 ◆ Plate 29

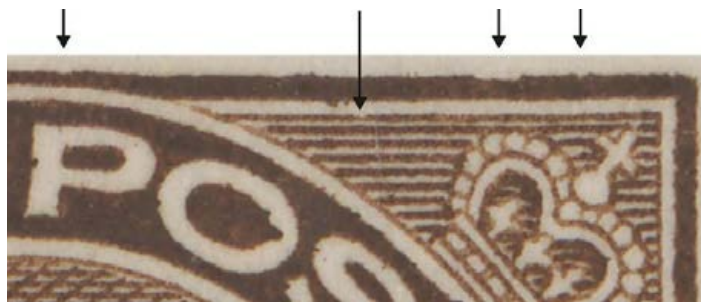
Guide dot in right margin

◆ Column 10 of UR or LR pane

Stamp 2 in column 10, UR pane

◆ 29UR20

3¢ Brown Misplaced Entry 82LR47



Type 22
characteristics

- Misplaced entry on LL stamp of block
 - Not in Marler
- Characteristics of type 22 (plate 96)
 - Examine plate 96, right? Wrong!

3¢ Brown Misplaced Entry 82LR47

Plate 82 – type ?

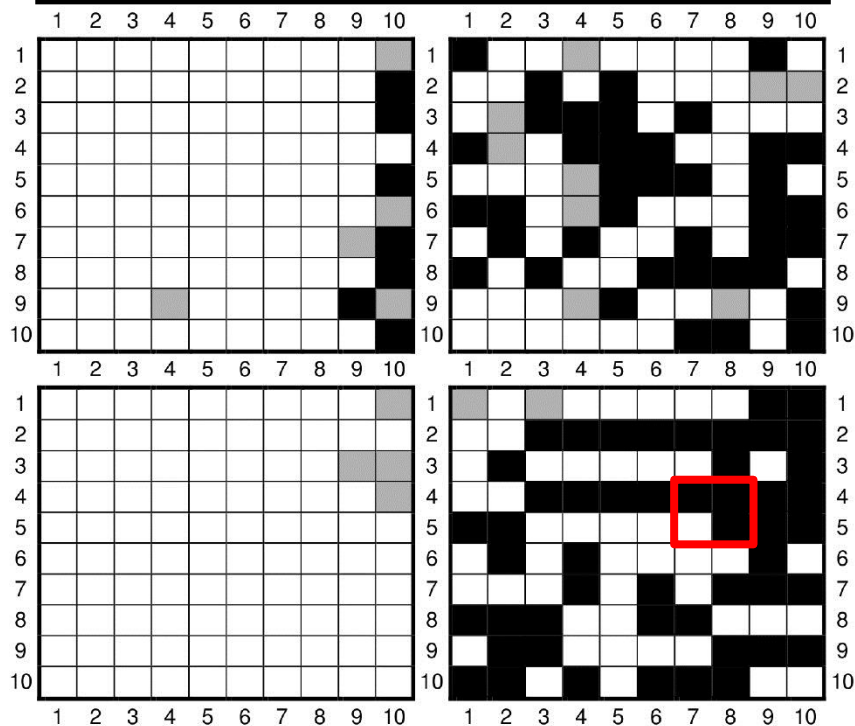
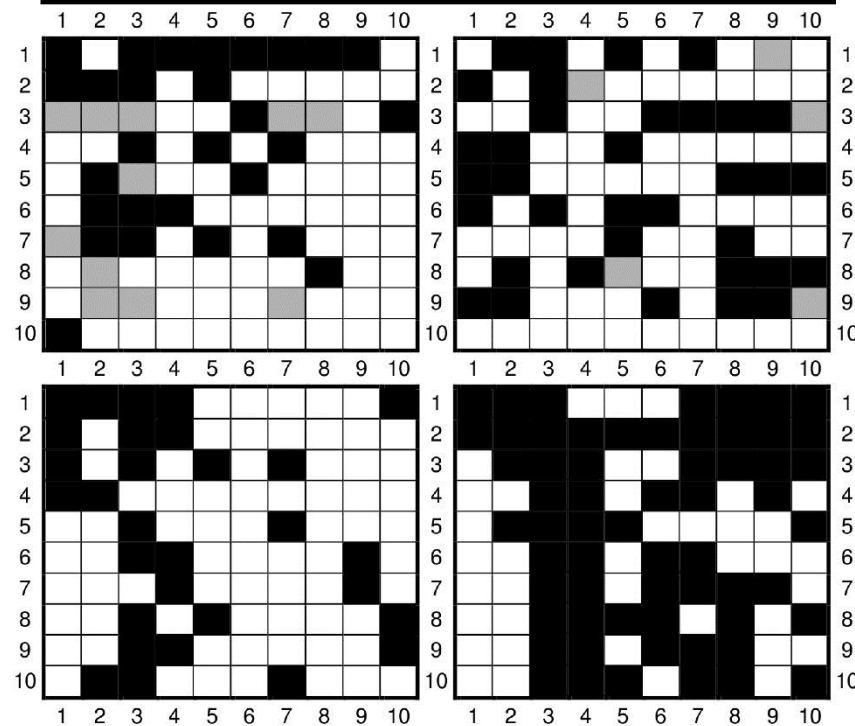


Plate 96 – type 22

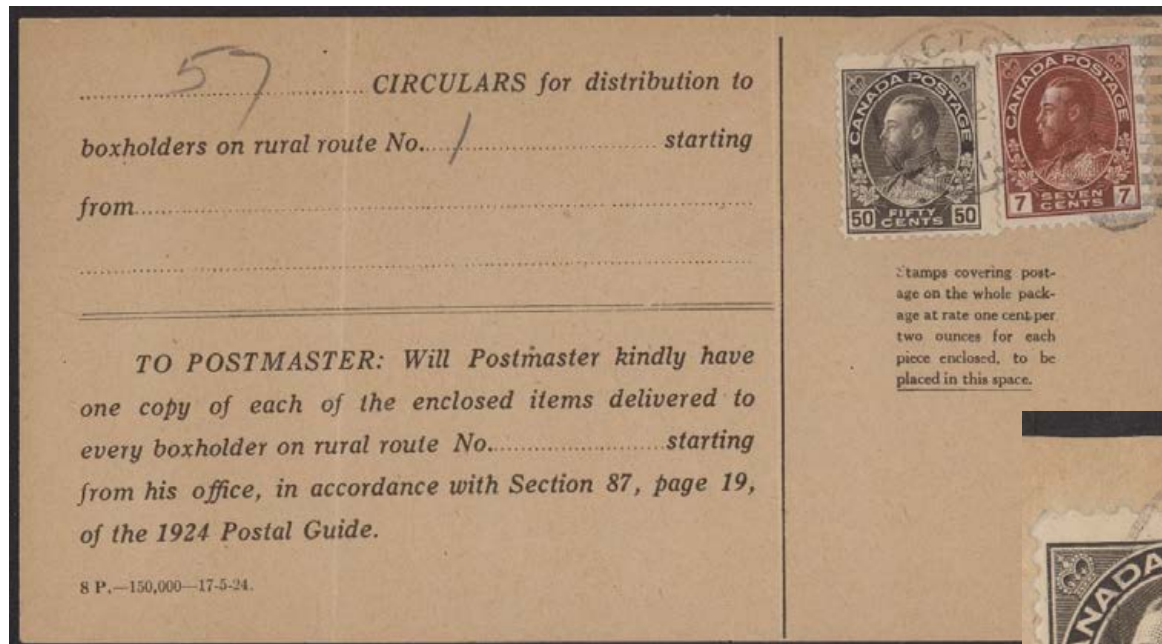


- Marler says plate 82 is type 17
 - Break in UR vertical line between lines 3 and 4
- It is actually type 22, like plate 96

Black cells = dent in top frame
Grey cells = bulge (retouch) in top frame

Admiral Study Group Meeting
Copyright © 2018 by Leopold Beaudet

ERD



- Date of issue: 12 Dec. 1924
 - ERD: 26 Jan. 1925
- Example above postmarked AP 2 / 25
 - 2nd earliest known



ERD – Design Type

From Randall W. Van Someren



Type R21
Marler ERD: 15 July 1916
This stamp: MY 5 16



Type R28
Marler ERD: 10 Jan. 1921
This stamp: JA 4 21

Neither Snow nor Rain nor ... Holidays



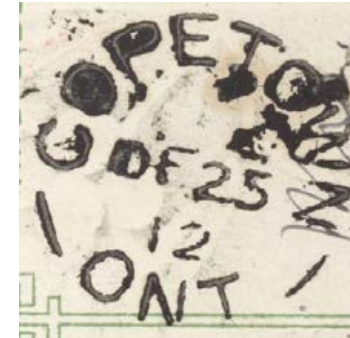
Postmarked JAN 1 / 18



Postmarked JAN 1 / 24

- Dedicated postal workers, obviously!
 - Any other examples of 1 January postmarks?
 - How about 25 December?

Neither Snow nor Rain nor ... Holidays



- Mailed from Kansas on 18 Dec. 1912
 - Copetown and Orkney are near Hamilton, ON

Neither Snow nor Rain nor ... Holidays



- Likely mailed from Glammis, forwarded to Paisley, and arrived in Lovat on 27 Dec. 1912
 - Lovat is about midway between Glammis and Paisley
 - The communities are southwest of Owen Sound, ON

2¢ Carmine ... Imperf?



- Postmarked
 - AU 22 / 14 & NO 9 / 14
- Same correspondence
- Trimmed booklet stamps
- Marler type BR4
 - Plates 7 – 10
 - Horizontal wove paper
 - Squat printing
 - 17.7 mm X 20.7 mm

Sheet stamps are on vertical wove paper and measure 17.4 mm X 21.0 mm

2¢ Carmine Endwise Coil Design Types



Ex Hans Reiche, Jim Watt

Row 20

Row 1

Row 2

Start of roll
Re-entry 1UL16

Paste-up
Re-entry 1UR6

- Type ERO1

- Endwise coil plate 1
- ERO = Endwise Roll, Original die
- Vertical line of RNB broken at top, middle, and intermediate point
- On perf 8 and perf 12 coils
- Same characteristics as type O8 on sheet stamps (plates 19, 20)



2¢ Carmine Endwise Coil Re-entry 1UR6



Ex Hans Reiche, Jim Watt

- Doubling in left inner oval below NA
- Doubling in right inner oval below ST (hugs upper border)
- Marks in AN and TA

2¢ Carmine Endwise Coil Re-entry 1UL16



2¢ Carmine Endwise Coil – ERR2 & ERR(2)3



Type ERR2 – Plate 2

- LL frame junction line unbroken
- Vertical line of LNB has 3 weak spots
- Vertical line of RNB thicker in middle



Same characteristics as type R25 on the sheet stamps (plates 111, 112)



Type ERR(2)3 – Plates 154-156

- LL frame junction line weak or broken above top of spandrel and between top of spandrel and line 1
- Vertical line of LNB is strong
- Vertical line of RNB strong



The strong LNB and RNB are characteristics of the retouched die, 2nd state

2¢ Carmine Endwise Coil, Perf 8



- Must be fake because
 - Ink is fluorescent
 - Must have been printed no earlier than early 1916
 - Retouched die
 - Genuine is original die, type ERO1 with breaks in vert line of RNB
- How was the fake produced?



Courtesy Times Past Stamps who donated the stamp to the Vincent Graves Greene Philatelic Research Foundation

1¢ Green Experimental Coil

Is it genuine?
How can you tell?



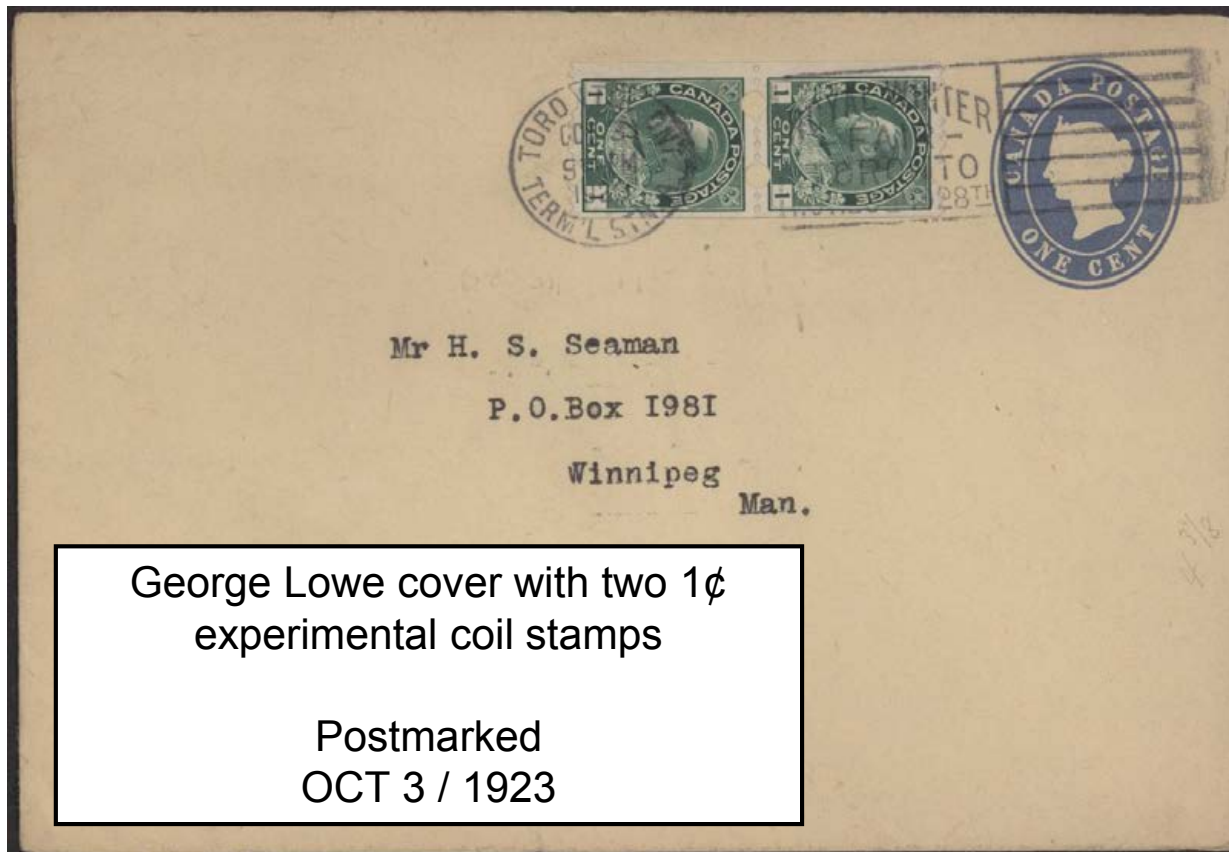
Courtesy David Bartlett

- Experiment to eliminate jamming in vending machines
- Carried out in July 1918 to work with modified vending machine in Toronto
 - But cover dated 3 June 1918 reported sold in J. N. Sissons auction in 1970
- Experiment deemed a failure after two-day trial
- Remainders (about 5,000) bought by Toronto dealer George Lowe

References

1. C. Coleman, "Canada – 'Experimental Coil'", *BNA Topics*, Vol. 2, No. 10, Oct. 1945.
2. Michael Dicketts, "The Toronto Experimental Coils of the Admiral Issue", *BNA Topics*, Vol. 29, No. 8, Sept. 1972.
3. George C. Marler, *The Admiral Issue of Canada*, American Philatelic Society, 1982.

1¢ Green Experimental Coil



- No corner card, but Lowe mailed similar covers with corner card
- Addressee was prominent Winnipeg collector

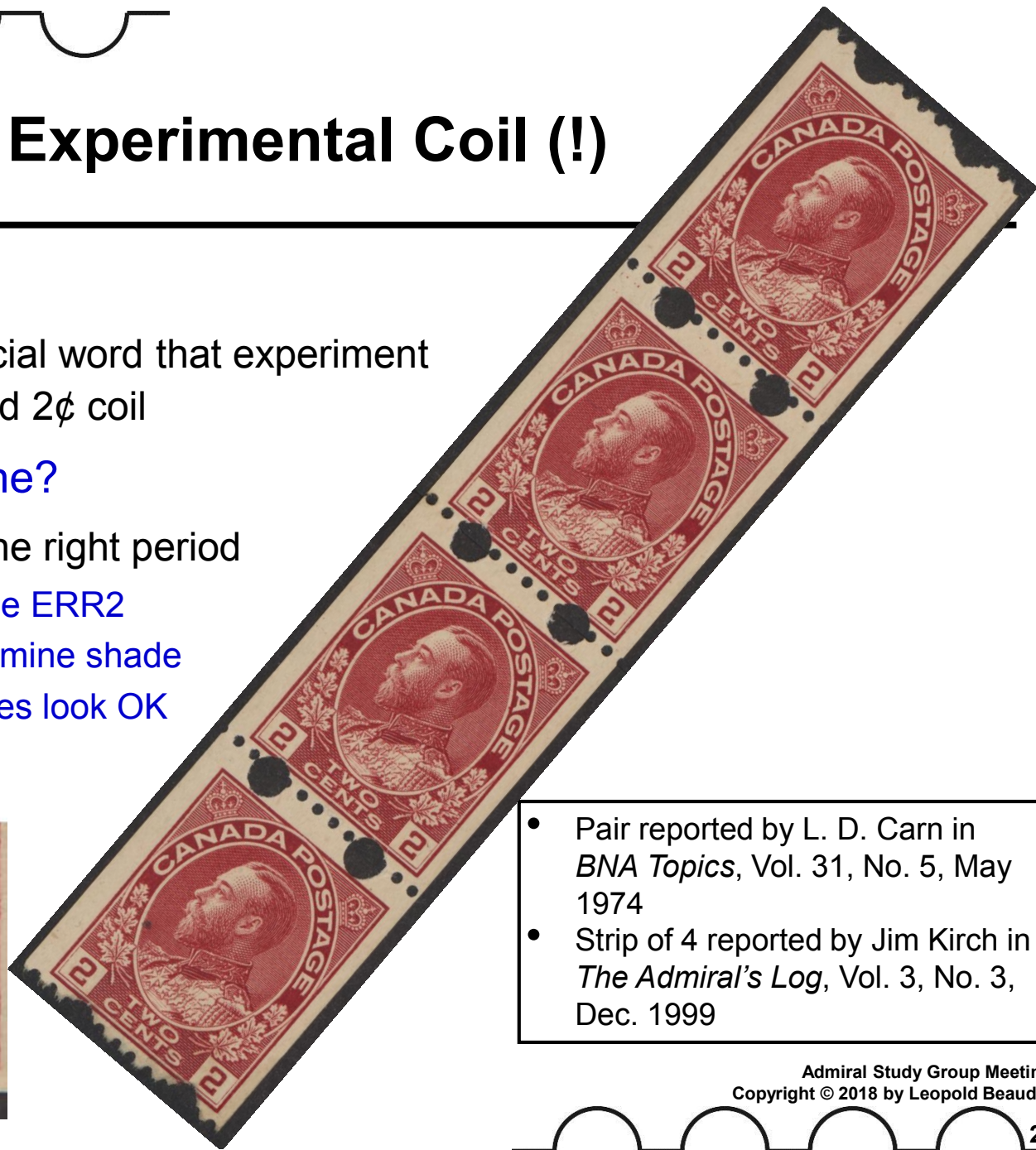
1¢ Green Experimental Coil



- How were endwise coils produced?
 - Printed in sheets of 400
 - Guillotined into half sheets of 20 rows by 10 columns
 - Perforated
 - 25 half-sheets joined together
 - Cut to form rolls of 500
- At what point were the large holes produced?
 - After half-sheets were joined together
 - Holes are well formed on either side of paste-ups
 - Possibly after half-sheets were cut to form rolls
- Large hole characteristics
 - Diameter 3.5 mm
 - Variable spacing between horizontal holes
 - Variable spacing between vertical holes
 - Variable horizontal offset between left and right holes
- How were the large holes produced?
 - Manually?
 - This would explain the spacing variation

2¢ Carmine Experimental Coil (!)

- Fake ...
 - No official word that experiment included 2¢ coil
- Or genuine?
 - From the right period
 - Type ERR2
 - Carmine shade
 - Holes look OK



- Pair reported by L. D. Carn in *BNA Topics*, Vol. 31, No. 5, May 1974
- Strip of 4 reported by Jim Kirch in *The Admiral's Log*, Vol. 3, No. 3, Dec. 1999