

# PENCE-CENTS ERA STUDY GROUP

Of the British North America Philatelic Society  
Volume X, No. 4, Nov 2021

---



3d Proof Block of Four Positions 36-37-46-47 with the lower right stamp showing the A47 Major Re-entry

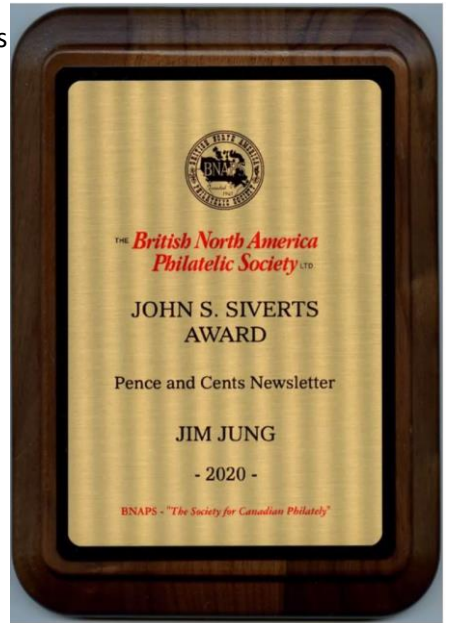
Dear Study Group Member,

The BNAPEX has come and gone for this year. Hopefully, next year we will be having the BNAPEX in person and we can see some nice stamps and presentations together. The virtual BNAPEX was a virtual success and seemed to stimulate and promote other virtual Stamp Shows.

The big surprise for me was the announcement of yours truly as the winner of the John S. Siverts Award for Best Newsletter. This is a huge honour for me to receive such a distinction for putting together this newsletter that belongs to all of us. This award says that, as a group, we have the best thing going at BNAPS Study Groups. Certainly, Ron Majors and all of the collectors who have contributed articles to our newsletter deserve a round of applause for helping to make our newsletter the front-runner in a group of accomplished contenders.

I flew from Toronto to Istanbul, travelled around Turkey, listened to the waves of the Aegean Sea as I slept and made it home safely. Before I stepped onto the airplane, I was handed a package with 3 masks, a bottle of sanitizer, antiseptic wipes and medical gloves. Apparently, this will happen each time you step onto an airplane where ever you are going. Happy travels!

Jim Jung



## In This Issue.....

## Page No

*Title Page: 3d Proof Block of Four Positions 36-37-46-47 with the lower right stamp showing the A47 Major Re-entry – courtesy of Jim Jung*

Welcome to 29<sup>th</sup> Edition..... Jim Jung 2

Pence-Cents Study Group ZOOM Meeting ..... Ron Majors 3

A census of covers to California for the

Decimal period ..... Luc Frève 4

Landmark Article on the 5c Beaver... Dr. Jim Watt & Mike Smith 11

Unused Scott 10 Census ..... Robert Graham 17

Philatelic News ..... 30

Upcoming Shows 2021-22 ..... 31



# Pence-Cents Study Group ZOOM Meeting by Ron Majors

## Pence-Cents Study Group ZOOM Meeting, November 30. SAVE THE DATE!

When: November 30, 7:00 PM (New York) EDT

Join Zoom Meeting

### Agenda:

#### Brian Murphy, Title: Nova Scotian Mail to and from Canada, 1851 – 1868 (30 minutes)

This one frame presentation from the Classic period- with the kind addition of covers from other collectors - uses covers both from Nova Scotia to Canada and from Canada to Nova Scotia to show routes, rates, and regulations of the mail exchange. The use of covers in both directions enhances and enriches our understanding of the postal system, and also, if we want, increases the number of collectable covers.

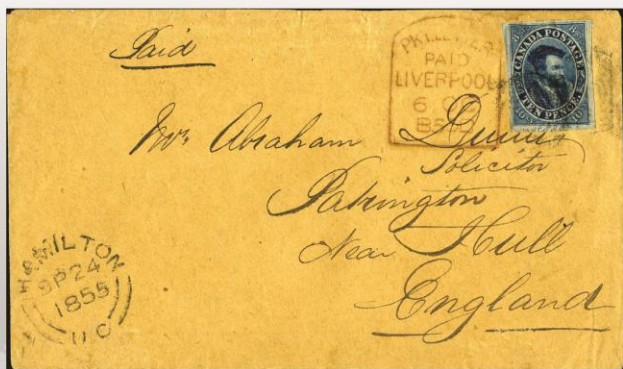
#### Dr. Jim Watt, Title: The 3d Beaver stamp- an attempt at Classification (45 minutes).

This 3 pence talk is the most detailed about the classification and relation to printing orders, and like it's ten cent Decimal Issue counterpart is complex to say the least. Ken Kershaw never wanted to cover it saying you can't tell colours because of storage conditions.

#### Show and Tell (members) (15 minutes)

# r. maresch & son

CANADA'S PREMIER STAMP AUCTION HOUSE SINCE 1924



For three generations and nearly a century it has been our privilege to serve the philatelic community at home and abroad. We could not be happier to be bringing the Fawn Large Queen Collection to auction at CAPEX22 and cannot wait to see all of you there. Come visit us June 9-12 at Booths 711 & 713 where we will host viewing prior to the sale.

6-2 VATA CRT • AURORA, ON • L4G 4B6 • CANADA  
(905) 726-2197 [www.maresch.com](http://www.maresch.com) (800) 363-0777

1924 - Dr Richard A.R Maresch  
Procures his Licence to Deal in Stamps

1933 - William Maresch Attends WIPA,  
the First International Stamp Exhibition

1945 - Dr Richard Maresch Joins CSDA

1951 - CAPEX

1957 - First Mail Auction

1963 - First Public Auction

1973-88 - Producer of the Canada  
Specialized Postage Stamp Catalogue

1975 - William Maresch Becomes a  
Founding Member of the V G Greene  
Philatelic Expertizing Committee

1978 - CAPEX

1983 - First Sale Using a Computer

1987 - Official CAPEX Auctioneer

1996 - Official CAPEX Auctioneer

1997 - Launch of maresch.com

2017 - First Internet Only Auction

2019 - First LIVE Internet Auction



OFFICIAL AUCTIONEER

## A census of covers to California for the Decimal period by Luc Frève

In 1984, Charles Firby included a compilation of covers sent to California during the Decimal period in "The Postal Rates of Canada: 1851-1868, the Provincial Period – A recording". His work was subsequently updated by George Arfken and Arthur Leggett when they released in 1996 their book "Canada's Decimal Era – Postal Usage during the Decimal Era 1859-1868". This book has been the reference since then. However, more than 20 years have passed and new covers have been discovered. The time is now appropriate to issue a new census.

The census is divided in two tables matching the rates in effect during the Decimal Era: Table 1 lists covers recorded for the 15 cents period (July 1, 1859 – June 30, 1864) and Table 2 includes covers sent after the rate was reduced to 10 cents on July 1, 1864 until March 31, 1868. You will find under the A&L header the reference number given by Arfken and Leggett to each cover noted in their book. In order to aim for completeness, I am including stampless covers in this census. Covers were not always pictured in auction catalogs and, if they did, the writings cannot always be deciphered. So, if you have new information about the covers listed below, I would greatly appreciate if you could contact me so I can update the census.

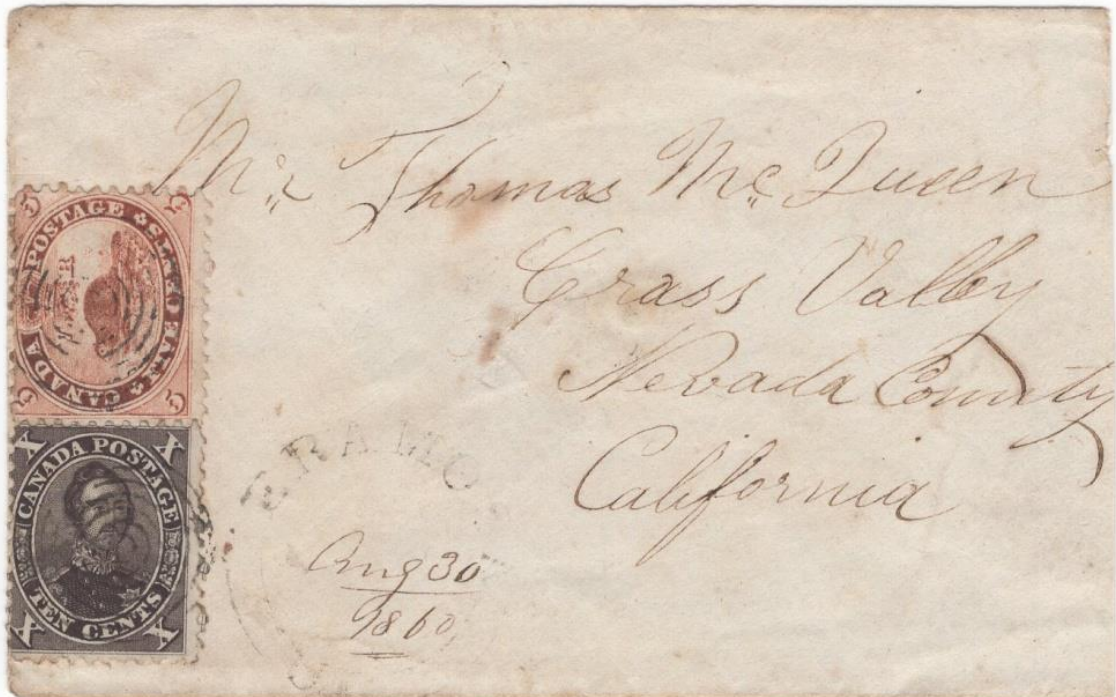


Figure 1. Cover sent from Eramosa, C.W on August 30, 1860 to Thomas McQueen in Grass Valley, Nevada Co., paid the required 15c postage to the West Coast with a 5c Beaver and a 10c black brown Prince Consort.

# A census of covers to California for the Decimal period by Luc Frève continued ...

Table 1. 15 cents covers to California

	A&L	Date	Franking	Origin	Destination	Addressee	Note
1	1	1859-10-17	5c X 3	Woodstock	San Francisco	Jakob Schrappner	
2	2	1859-12-30	5c X 3	Ingersoll	North San Juan	George Polley	
3	3	1860-03-21	10c + 5c	London	San Francisco	? ...an	
4	4	1860-05-21	5c X 3	Woodstock	Mendocino	Jakob Schrappner	
5		1860-06-14	5c X 3	Kirkwall	Grass Valley	Thomas McQueen	1A
6		1860-07-17	5c X 2 + 5EN	?	Grass Valley	Thomas McQueen	1B
7	5	1860-08-25	5c X 2 + 5EN	Kirkwall	Grass Valley fwd to Mountain Wells	Thomas McQueen	
8		1860-08-25	5c X 2 + 5EN	Kirkwall	Grass Valley fwd to Mountain Wells	Thomas McQueen	1A
9	6	1860-08-30	10c + 5c	Eramosa	Grass Valley	Thomas McQueen	
10		1860-09-06	5c X 3	Kirkwall	Grass Valley	Thomas McQueen	1A
11		1860-10-02	5c X 2 + 5EN	Kirkwall	Grass Valley	Thomas McQueen	
12		1860-10-16	5c X 2 + 5EN	Kirkwall	Grass Valley fwd to Mountain Wells	Thomas McQueen	1A
13		1860-10-25	5c X 3	?	Grass Valley fwd to Mountain Wells	Thomas McQueen	1C
14	7	1860-10-25	10c + 5c	?	Stockton	?	1D
15	8	1860-11-10	10c + 5c	London	San Francisco	James Pullman	
16		1861-01-17	5c X 3	?	Grass Valley	Thomas McQueen	1B
17		1861-08-03	15 ms	Montreal	San Francisco	C. Little	
18		1862-11-16	10c + 5c	Belleville	Stony Point	Arnold C. Cogle	
19		1863-01-06	15 ms	Montreal	Santa Rosa	Thomas Fraser	
20	9	1863-02-18	5c X 3	Waterloo	Bidwell's Bar	George W Miller	
21	10	1863-07-04	10c + 5c	Montreal	Stockton	Joseph Wallner (?)	
22	11	1863-08-10	10c + 5c	Brantford	San Francisco	W. W. Chipman	
23		1863-09-16	5c X 3	Oshawa	Marysville	John McIntosh	
24	12	1863-11-13	10c + 5c	Brantford	San Francisco	?	
25	13	1863-11-16	10c + 5c	Bellevue	Sonoma	?	
26	14	1863-12-07	10c + 5c	Brantford	San Francisco	W. W. Chipman	
27		1864-07-02	10c	Guelph	San Francisco	Daniel Day	
5EN: 5¢ Nesbitt postal stationary; ms: manuscript							

## A census of covers to California for the Decimal period by Luc Frève continued ...

Note 1A: According to Horace Harrison's notes, these four covers originated from Eramosa. However, they only bear a Kirkwall postmark. One of the cover was accompanied by a letter written in Eramosa. As we do not know if Harrison had access to the content of the other letters, we cannot assume that they all originated from Eramosa.

Note 1B: These covers probably originated in Kirkwall or Eramosa but the post office name is not visible on the covers, we can only read the date on the picture.

Note 1C: No postmark appears on the front of the cover. The lot description indicated a Brockton broken circle on the reverse.

Note 1D: Per Arfken & Legget, this cover was recorded by Firby but no picture has been located yet

**Table 2. 10 cents covers to California**

	A&L	Date	Franking	Origin	Destination	Addressee	Note
<b>1</b>		1864-07-07	10c hs	Montreal	Santa Rosa	Thomas or Julia Fraser	
<b>2</b>		1864-07-28	5c X 2	Napanee	San Francisco	Solomon W Pringle	
<b>3</b>	2	1864-08-08	10c	Napanee	San Francisco	?	2A
<b>4</b>	3	1864-08-30	10c	Napanee	San Francisco	Solomon W Pringle	
<b>5</b>		1864-10-01	10c hs	Toronto	San Francisco	?	2B
<b>6</b>	4	1864-10-26	5c X 2	Brantford	San Francisco	W. W. Chipman	
<b>7</b>		1864-10-28	10c	Guelph	San Francisco	Daniel Day	
<b>8</b>		1864-11-08	unpaid	Whitby	San Francisco fwd to Taylorsville	Arthur W. Keddie	
<b>9</b>		1865-06-08	unpaid	Whitby	San Francisco fwd to Taylorsville	Arthur W. Keddie	
<b>10</b>	5	1865-09-16	5c X 2	Picton	San Francisco	W. A. Werden?	
<b>11</b>	6	1865-10-24	5c X 2	Brantford	San Francisco	?	2B
<b>12</b>	7	1866-01-26	10c	Picton	San Francisco fwd to Oregon	Wm A Merden (or Sheridan?)	
<b>13</b>	8	1866-04-16	10c	Brantford	San Francisco	W. W. Chipman	
<b>14</b>	9	1866-08-15	5c X 2	Brantford	San Francisco	W. W. Chipman	
<b>15</b>	10	1866-09-11	5c X 2	Whitby	Crescent Mills	Arthur W. Keddie	
<b>16</b>		1867-??-??	?	?	Taylorsville fwd to Rich Bar	?	2B
<b>17</b>		1867-02-06	10c	Aurora	Campo Seco	George L. Hunt	
<b>18</b>		1867-02-20	10c hs	Newburgh	Grass Valley	William Delmage	
<b>19</b>		1867-03-05	10c hs	Aurora	Campo Seco	George L. Hunt	
<b>20</b>	11	1867-03-09	10c	Brookbury	Timbuctoo	?	



## A census of covers to California for the Decimal period by Luc Frève continued ...

	A&L	Date	Franking	Origin	Destination	Addressee	Note
21	12	1867-04-27	10c	Cumminsville	St. Louis	William R. Morgan	
22		1867-08-03	5c X 2	Hamilton	Napa City	Dr Noble Oliver	
23		1867-09-09	unpaid	Whitby	Greenville fwd to Yankee Hill	Arthur W. Keddie	
24	13	1867-09-17	10c	Aurora	Campo Seco	George L. Hunt	
25	14	1867-11-18	10c	Aurora	Campo Seco	George L. Hunt	
26	15	1867-12-05	5c X 2	Kettleby	Campo Seco	?	2A
27		1867-12-07	10c ms	Newburgh	Colfax	William Delmage	
28		1868-01-01	10c hs	Newburgh	Colfax	William Delmage	
29	16	1868-01-18	10c	Aurora	Campo Seco	George L. Hunt	
30	17	1868-01-27	5c X 2	St. Mary's	Mariposa	?	2A
31		1868-03-13	10c ms	Marlbank	Drytown	To the Postmaster	
32	18	1868-03-28	10c	Medina	?	?	2A
33		186?-02-29		Montreal	Coloma	G.M. Anderson	2C

**hs: hand stamp; ms: manuscript**

Note 2A: Per Arfken & Legget, this cover was recorded by Firby but no picture has been located yet

Note 2B: No picture provided in the auction catalog (or only partially pictured)

Note 2C: Using retro-reveal, the postmark appears to be 1865 or 1866.

I will now write a few words about some of the addressees listed in this census. Covers sent to Thomas McQueen in Grass Valley represent third of the covers recorded for the 15 cents era. However I will not discuss here these ten covers as they are the subject of an article by Ron Majors and Luc Frève in the recent issue of BNA Topics - Whole Number 569, 78(4) 46-51(2021). Instead, I will describe the other three large correspondences (W. Chipman, A. Keddie and G. Hunt) which are included in the 10 cents period, at the exception of two covers.



W.W. Chipman ca. 1850  
(Alameda Museum)

The W. W. Chipman correspondence includes five covers sent between 1863 and 1866. This number could be expanded to seven, should the Brantford covers #24 from Table 1 and #11 from Table 2 turn out to also be addressed to him. William Worthington Chipman (1820-1873) was an attorney in law from San Francisco. He is known for being the co-founder of Amaleda (this city made the history when the first transcontinental train completed its trip by reaching its terminus in 1869). Thomas Botham (1819-1893) endorsed many of these covers. Mr Botham was a dry good merchant of Brantford and he became subsequently a broker. Since I have not found any family relationship between the two, I have to assume that Botham maintained a business relationship with Chipman. Unfortunately I have not found more information on this matter.

**A census of covers to California for the Decimal period  
by Luc Frève continued ...**



Figure 2. Cover endorsed by Thomas Botham, mailed from Brantford, CW on October 26, 1864 to W.W. Chipman in San Francisco, paid with two 5c Beavers (courtesy of Ron Majors)



Figure 3. Cover sent unpaid from Whitby on November 8, 1864 addressed to Arthur W. Keddie in San Francisco, forwarded on December 8 to Taylorsville, Plumas Co. Rated 13c due by the recipient consisting of 10c for the U.S. West Coast plus an additional 3c for the forwarding



## A census of covers to California for the Decimal period by Luc Frève continued ...

As I also keep a census of covers from California to BNA, I have been able to match Arthur Keddie (1842-1924) with Maggie Barnes (1843-1901), his future wife who was residing in Whitby before moving to California. Over five years, nineteen covers were exchanged and I only need a picture of #16 of Table 2 to confirm that it is also part of this correspondence. Their marriage was celebrated on June 9, 1869 in California which explains why the last cover recorded in my pre-1875 census is dated April 9, 1869. Arthur Keddie was working as a surveyor. He explored the county of Plumas to identify the suitable route for the roads. Always on the move, Keddie made sure that his incoming mail would be forwarded to his actual location so he could get the letters from his fiancé. All covers from Whitby were sent unpaid and were graciously paid by Keddie. It is to be noted that a small city of Plumas Co. was named Keddie to honor the surveyor's contribution in the development of railroads.



Figure 4. Cover sent from Aurora U.C. on February 6 1867 to George L. Hunt in Campo Seco, Calaveras Co., franked with a 10c Prince Consort

In addition to the five covers addressed to George Hunt listed above, I also recorded six covers sent to him between 1868 and 1871. All covers were directed to Campo Seco (post office opened in 1852). Two other covers to Campo Seco are known (including Table 2 #26) but, again, I cannot confirm the addressee until someone can provide me with a picture of these. In 1862, George Hunt (1841-1922) left Aurora for California. Then in 1865, he went mining in the Cariboo district of British Columbia and came back in the fall of 1866. He settled in Campo Seco and worked in the quartz mines. He married Margaret Gillon in 1871 and moved to Elk Grove in 1872 to become a farmer and to raise his children. I believe the covers from Aurora were sent by his parents Joseph Hunt and Emily Lundy but it needs to be confirmed by comparing the front of the covers with the writing of the letters archived in California.

## A census of covers to California for the Decimal period by Luc Frève continued ...

A characteristic of a census like this one is to be a work in progress. We never know when a new cover may be discovered. Some may sit in a family correspondence sleeping in the attics, others may be waiting in an antique shop or simply filed in a collector's binder until it is shown to a friend or a dealer who knows about its rarity. If you are aware of covers that were not recorded in this census, I would greatly appreciate if you email me ([l\\_freve@videotron.ca](mailto:l_freve@videotron.ca)) a scan of both sides of the cover.

To conclude, I would like to thank all BNAPSers who provided me with copies of covers from their collection. Willow and her predecessor Kathy, the librarians of the Harry Sutherland Library at the Vincent Graves Greene Foundation, deserve a special thank you for the assistance they gave me while I was progressing in my research.

---

### Want to Give CAPEX22 a Helping Hand



Recently, BNAPS has introduced a matching funds program to allow members to make a monetary donation to CAPEX22 and the Society will match your donation 1:1, in effect doubling your contribution. The program will run until February 2022. As you know, CAPEX22 (June 9-12, 2022) is the first single-frame international exhibition and is the first major international show in Canada since 1996. If you have never been to an international show, you will be in for a treat. Because of this program, BNAPS will become a Partner Sponsor and will have a premium position with a booth on the exhibition/bourse interface, a relaxation room for guests and members to meet or just get off of their feet, a seminar room named BNAPS Room for the entire conventions, sponsorship of the Awards program and a few other perks—all high visibility activities.

You can donate direct on the BNAPS website, click on “Donate”. Canadians can donate directly on the [CAPEX22.org](http://CAPEX22.org) website. Don't forget to identify yourself as a BNAPS member in order for CAPEX to get the matching funds. Thanks in advance for your help for Canadian philately!

## Landmark Article on the 5c Beaver by Dr. Jim Watt

### With Images and facts courtesy of Mike Smith

This article is going to “stir some heads”, but then again, that’s what landmark articles do. This article is the most important article on the 5c Beaver in forty years. In the beginning there was Senator Calder, Chapman, and G. Whitworth. Whitworth’s classic 1966 book set the standards for the 5c beaver for flaws, re-entries and varieties. Whitworth firmly believed one plate, eleven states theory, while a contemporary researcher Chester Soule, believed in two plates to explain the “C” dot differences.

As late as CAPEX 1978, Vincent G Greene personally asked me if I thought there were one or two plates. Being young and enthralled with Whitworth’s book, I tended to side with him. How wrong I was! In fact this article now PROVES my May 2020 “ hypothesis “ of four plates. (Irreconcilable plate flaws). Hypothesis becomes proof when there is incontrovertible absolute evidence for 4 different sheets, which I shall call plates. At the moment we are leaving the states topic alone.

In May 2020, during Covid-19, I studied the two proof sheets I’d had for years. I wrote an article, largely ignored, as most investigators stuck with the tried and true Whitworth. Here is the proof that rips the old theory wide open. Fact Ken Kershaw’s book used my two proof sheets. I call these two sheets, sheet 4. Secondly, we have a stitched sheet scan of the 1997 SAN Francisco find, which is sheet 2, or to give it a name, the Sun Ray sheet, since Sun Ray flaws are on it. To be fair to Whitworth, he had neither my two sheets (1990 ABN Sale) or the San Francisco find (1997).

Next we have proof multiples in sheet one with my UR block of six 9-10,29-30. We know this because the “burning bush” is there on PP10, but no significant PP 9 re-entry. (PP 9 re-entry is on sheet 3) Chester Soule’s PP 9-10 was only bought two years ago by Jim Watt. Sheet 2 of the San Francisco find also shows no burning bush or plate pos. 9 re-entry. I don’t own this sheet but multiple people have scans of this stitched together sheet which doesn’t affect PP 9-10,2,or 61.

The 4 types of PP 9-10 were scanned by Mike Smith. (See figures 1-5).



Figure 1. Plate Positions 9 and 10, Sheet 1. Burning Bush Position 10.



**Landmark Article on the 5c Beaver by Dr. Jim Watt**  
With Images and facts courtesy of Mike Smith



Figure 2. Plate positions 9 and 10, State 2a. Burning Bush + Flaw 124.  
Sheet 1 later state.



Figure 3. Plate positions 9 and 10, State 4a. Printing flaws 92b and 29a are present but faint.  
Last state of sheet 2.



## Landmark Article on the 5c Beaver by Dr. Jim Watt

With Images and facts courtesy of Mike Smith



Figure 4. Plate positions 9 and 10, State 5. Note the upward and rightward shift of position 10.  
Strong re-entry position 9.  
This is Sheet 3.

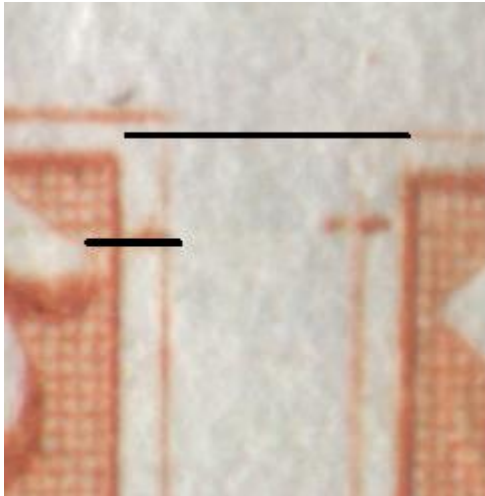


Figure 5. Plate positions 9 and 10, State 10/11. Note the upward and rightward shift of position 10  
is same as on Figure 4.  
This is Sheet 4.

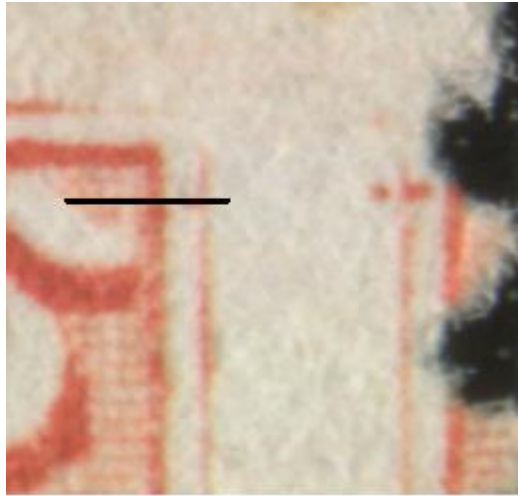
## Landmark Article on the 5c Beaver by Dr. Jim Watt

### With Images and facts courtesy of Mike Smith

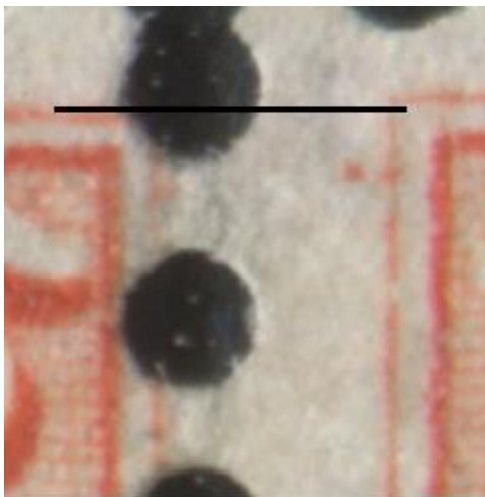
The next step was plate positions 1 and 2 with 4 types all different (figure 6).  
Images are courtesy of Mike Smith.



Sheet 1, Positions 1/2



Sheet 2, Positions 1/2



Sheet 3, Positions 1/2



Sheet 4, Positions 1/2

Figure 6.

The Guide dots in the upper corners of the stamps position 1 and 2 change in position up and down in relation to the design of the stamps. The position 1 stamps and position 2 stamps also are at different heights on the sheets. This type of comparison can be found at several positions across the top row of the sheets.

Position 61 shows similar shifting of guide dots in the left margins of sheets 1 and 2. See Figures 7 and 8. After the imprint were added there is a difference in the position of the imprint in relation to the stamps of sheets 3 and 4. See figures 9 and 10.



**Landmark Article on the 5c Beaver by Dr. Jim Watt**  
**With Images and facts courtesy of Mike Smith**



Figure 7  
Sheet 1



Figure 8  
Sheet 2



Figure 9  
Sheet 3



Figure 10  
Sheet 4

Figures 7 and 8 courtesy of Mike Smith. Figures 9 and 10 courtesy of Earl Noss and Jim Jung.

# Landmark Article on the 5c Beaver by Dr. Jim Watt

With Images and facts courtesy of Mike Smith

## Summary:

North /South guide dots were Whitworth consistent, he failed to notice the quite literally 1/4 mm left ward shift between the two sets of guide dots. Trying to get other's people's email attachments to the same magnification scale is the little nightmare given to Mike Smith (Profuse apologies), but I did carefully compare those imprints to my two sheets (sheet 4). Therefore I consider my May 2020 hypothesis proven four separate times by plate positions 9-10, plate position 2, and plate position 61. States we can argue about later, but I'm still in favour of preserving Whitworth's 11 States, just like rearranging an algebraic equation. I propose:

Sheet 1- 1859 - early 62 states 1,2,2a (whatever Whitworth labeled is accurate for this)

Sheet 2- states 3,4 -1862 to possibly the end of 1862, it never had an imprint

Sheet 3- leaping fish sheet at pp54, unre-entered in state 5, then re entered in states 7,8 NOT state six.

Sheet 4- state 6 (unre-entered)

state 9 (plate position 53 - round rock in waterfall)

state 10-11 (plate position 53- square rock in waterfall)

No change in plate position 28 major re-entry, but the plate position 23 is different on my two sheets.

I can see state six on this Sheet 4 through re entered remnants of state six there even in states 10, 11. Because I know there's a round rock in waterfall on stamps and not on proof sheets, I reserved state 9 for research discussions.

Sheet 3,4 had imprints 1,2 did not. There's some evidence that only sheet one was terminated leaving concurrent usage for sheets 2,3,4.

Hopefully this helps since authorities talking about states 4-5, or 6-7 are NOT even talking about the same sheets! Please cease and desist!

I wasn't wrong about this article turning heads but to disprove what I have written is not possible once you see 1200 dpi and 2400 dpi scans, not heretofore available until recently.

As they say in mathematics...Q.E.D.!!!

## References:

THE FIVE CENTS BEAVER STAMP OF CANADA, Geoffrey Whitworth, The Royal Philatelic Society, London, 1985.

Dots and Scratches, Newsletter of the Re-entries and Constant Plate Varieties Study Group, BNAPS, A Closer Look at the Cover Page Pairs, Michael D. Smith, April 1, 2019, Whole No. 21. Pgs. 5-10.

Dots and Scratches, Newsletter of the Re-entries and Constant Plate Varieties Study Group, BNAPS, Is There More Than One Plate for the 5c Beaver, Michael D. Smith, Sept. 21, 2019, Whole No. 23, Pgs. 16-19.

## Unused Scott 10 Census by Robert Graham

This paper is notorious for thins due to its very nature.

In November of 2016, Robert A. Siegel wrote:

Unused (no gum) examples alone are seldom offered and we suspect that no more than 6-12 examples are known. From our research, we have been unable to find another original gum example in private hands. The only other known, with part original gum, resides in the Tapling Collection at the British Museum.

In August of 2018, they stated:

Of the less than twelve unused examples in private hands, virtually all are no gum and most have faults to some degree (some quite extensive and/or repaired). We can only locate one other sound, four-margined example comparable to this example (ex Dauer, which realized \$42,500.00, plus buyer's premium in 2014).

That being said, I have found 18 (plus a possible 2 which may or may not be duplicates) copies that have sold over time, plus the Tapling example, of which 4 have original gum. Of the 18 – 20 copies, only 8-9 are sound of which 3 are OG.

Pricing on the sales (availability) of original gum copies are:

- 2016 3,500 USD
- 2006 45,000
- Available, WIP 75,000 USD
- Available RWS

Hope this gives you something to think about, as they are very attractive pieces.

---



Saskatoon Stamp Centre Inventory, 124588.0

Sold April, 2021

10 6d 1857 Reddish Purple on VERY THICK FIBROUS SOFT PAPER, "unused, genuine, thins, pinhole, soiled on front". Margins cut left & top.

Still a rare unused stamp. Scott US\$32,500

V.G.Green cert G 20805

Cat. Price 6,000.00 Sold for 2,000



## Unused Scott 10 Census by Robert Graham



February 28, 2020

Sale No: 859 Eastern Auctions Lot No:357

Canada 10, 6p Reddish Purple on Very Thick Fibrous Soft Paper, Imperforate A rare unused example of this difficult, very short-lived printing in well-above average condition, barely visible corner crease at lower right, otherwise sound, clear of design at foot to otherwise unusually large margins, displaying characteristic colour, impression and paper associated with this printing, one of the very rarest Canadian stamps in unused condition, Fine;

2000 Greene Foundation cert.

Cat. Value 20,000 Sold for 6,750

---

Eastern Auctions - June 2018

Same as Above

10 1857 6p Reddish Purple on Very Thick Soft Fibrous Paper, Imperforate A remarkably difficult classic stamp to find unused, slightly in outer frame at foot but evenly clear of design, unusually large margins on other sides, characteristic colour, impression and paper associated with this short-lived printing; miniscule corner crease at lower right hardly visible, one of the very rarest Canadian stamps in unused condition and well-above average, Fine; 2000 Greene Foundation cert.

V.G.Greene cert. #9748.

Cat. Val. \$18,000

Priced at \$5,750 + 18% Commission

---

Postiljonen Auctions - Oct 2009

Same as Above

Sold as part of a Canada collection.

V.G.Greene cert. #9748.

---

Saskatoon Stamp Centre Inventory, 66472.0

Same as Above

10 6d Reddish Purple, on Very Thick Fibrous Soft paper. Fresh colour. Fine, Unused. Three wide margins, just cuts outer frameline. Tiny corner crease at LR just touches design. A GREAT PENCE RARITY! (Scott US\$11,500)

V.G.Greene cert. #9748.

Cat. Val. \$12,000

Priced at \$5,950

## Unused Scott 10 Census by Robert Graham



The Calgary Collection of Canada

CANADA, 1857, 6p Reddish Purple, Very Thick Soft Wove Paper (10; SG 23). Unused (no gum), large margins all around, uncommonly fresh and rich color, highly detailed impression

EXTREMELY FINE. AN IMMENSELY RARE UNUSED EXAMPLE OF THE 6-PENCE REDDISH PURPLE, SCOTT NO. 10. ONE OF THE FINEST EXAMPLES OF LESS THAN A DOZEN BELIEVED TO EXIST.

Of the less than twelve unused examples in private hands, virtually all are no gum and most have faults to some degree (some quite extensive and/or repaired). We can only locate one other sound, four-margined example comparable to this example

Ex Dauer (which realized \$42,500.00 USD, plus buyer's premium in 2014).

Ex "Foxbridge". With 1989 Greene Foundation certificate.

SG £48,000. Unitrade C\$40,000

Sold for 24,000 USD

---

**One could question, if the above and the Dauer stamp which follows are truly the same. This one indicates it is from Foxbridge, and so does the following, and yet, some differences.**

---



January 30, 2014, Spinks Auctions

Dr Edward Dauer Collection

#10, 1857 6d Reddish purple on very thick soft wove paper, an exciting unused example of this terribly rare stamp, being completely free of the myriad faults and repairs that plague the great majority of copies.

It possesses numerous desirable physical characteristics rarely found converging on a single copy, including ample to mostly large even margins, rich luxuriant color in the distinctive shade that is characteristic only to the very thick soft paper printing, a razor-sharp impression and an uncommon overall freshness on clean white paper, extremely fine

A beautiful stamp and the first sound mint example of this rarity that we have had the pleasure of offering in our auctions;

1993 P.F. Certificate Ex Foxbridge Private Offering

(Unitrade C\$40,000.00).

SOLD for \$42,500.00 USD plus Commission

## Unused Scott 10 Census by Robert Graham

---

Sold October 20th, 2021 by Siegel, as part of the Scarsdale Collection, for 47,500 USD plus 18% Buyers Premium (8,550). Same as Above

---

Saskatoon Stamp Centre Inventory, 24347.0

Same as Above

10 6d Reddish Purple on Very Thick Fibrous Soft paper. One of the Finest of the few known copies. Unused (J. Smith copy brought \$20,900 10/86 - This is as fine)

Ex "Foxbridge". With 1989 Greene Foundation certificate.  
\$19,500

Selling For

---

1987 The "John Foxbridge Collection

Same as Above

1857 10P Reddish Purple on Thick Soft Wove Paper. Unused. Ample to Large Margins. Very Fine and Very Rare. With Expert Signature on Reverse

Net Price Offering 12,500 USD

---

**r. maresch & son**  
CANADA'S PREMIER STAMP AUCTION HOUSE SINCE 1924



**OFFICIAL AUCTIONEERS**



## Unused Scott 10 Census by Robert Graham

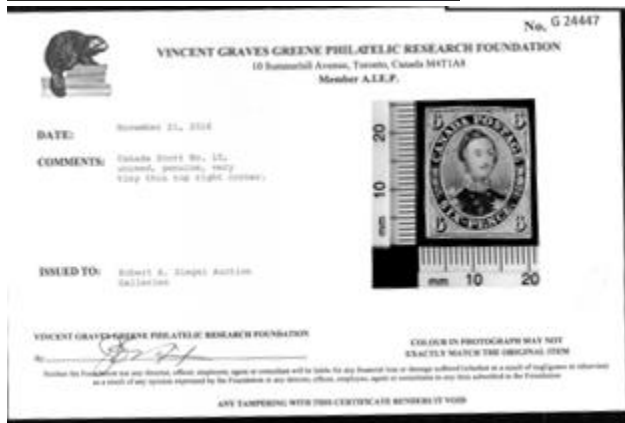


October 7, 2017 by Sparks Auctions Lot 28

Canada #10 1857 6d reddish purple Consort Imperforate, on Thick Soft Paper, unused (no gum) with mostly clear margins and a sharp impression on fresh paper, fine.

Accompanied by a 1970 Philatelic Foundation certificate and a 2016 Greene Foundation certificate, both stating "tiny thin at top right corner." A true rarity with fewer than twenty or so unused examples recorded.

Unitrade \$18,000, sold for C\$18,000 plus buyer's premium. (20,700)



2017-04-25 Robert A. Siegel Auction,

same as above

6p Reddish Purple, Very Thick Soft Wove (10; SG 23). Unused (no gum), ample margins to clear, strong impression on fresh paper, minute thin in top right corner

FINE APPEARANCE. AN IMMENSELY RARE UNUSED EXAMPLE OF THE 6-PENCE REDDISH PURPLE ON THICK WOVE PAPER.

It is believed that less than twelve unused examples exist in private hands. Virtually all are found with no gum and with varying degrees of faults (some are extensively repaired).

With 1970 P.F. and 2016 Greene certificates.

Scott \$16,000.00. SG £48,000. Unitrade C\$18,000.00 Sold for 4,500 USD

## Unused Scott 10 Census by Robert Graham



2016-11-16 Robert A. Siegel Auction

CANADA, 1857, 6p Reddish Purple, Very Thick Soft Wove (10; SG 23). Unused (no gum), large margins all around, uncommonly fresh, with rich color and a fine impression, minute surface scrape at top that is barely perceptible and almost unworthy of mention

VERY FINE. A DESIRABLE EXAMPLE OF THIS IMMENSELY RARE UNUSED STAMP.

It is believed less than twelve unused examples exist in private hands. Virtually all are no gum and most have faults to some degree (some are extensively faulty or repaired). This example is among the finest of the small number known.



Ex "Fordwater". With 2011 Greene Foundation certificate.

SG £48,000. Unitrade C\$40,000 Sold for 17,000 USD

Saskatoon Stamp Centre Inventory, 109826.0

Same as Above

Sold February 2012

10 6d Reddish Purple on Very Thick Fibrous Soft paper (0.0045). Unused, generous margins. V.G. Greene stating "tiny surface scrape at top" which is barely visible on outer frame line.

GREAT PENCE RARITY!

V.G. Greene cert #18452

Cat. Price \$36,000 Priced at \$19,500

## Unused Scott 10 Census by Robert Graham



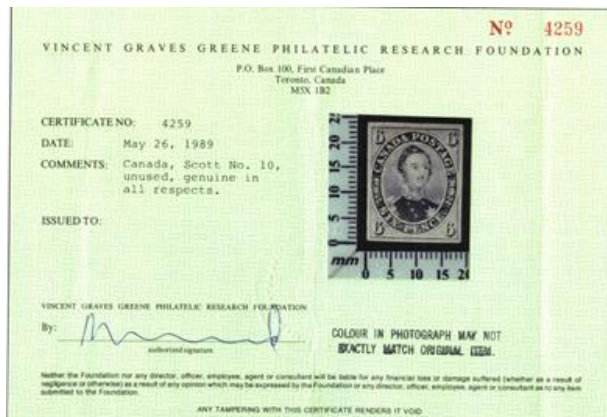
2016-11-16 Robert A. Siegel Auction , The Weinberg Inventory

CANADA, 1857, 6p Reddish Purple, Very Thick Soft Wove (10; SG 23). Disturbed original gum, h.r., large margin at right, close to in at bottom, rich color, some faults incl. 4mm repaired internal tear and light diagonal crease (neither of which is noticeable from the front). With 2015 Green Foundation Certificate

NEARLY FINE APPEARANCE. THIS MAY BE THE ONLY ORIGINAL GUM EXAMPLE OF THE 1857 6-PENCE REDDISH PURPLE IN PRIVATE HANDS. A RARITY OF CANADA.

Unused (no gum) examples alone are seldom offered and we suspect that no more than 6-12 examples are known. From our research, we have been unable to find another original gum example in private hands. The only other known, with part original gum, resides in the Tapling Collection at the British Museum.

SG £48,000. Unitrade C\$36,000.00. Scott Retail \$32,500.00 Sold for 3,500 USD



Saskatoon Stamp Centre Inventory, 113739.0

Sold September 2016

10 6d Reddish Purple on Very Thick Fibrous Soft Paper. Unused GEM! One of the FINEST KNOWN. Ex Jack Shartsis. VF Unused. SHOWPIECE!

V.G.Green Cert 4259

Sold to Royal William, September 2016

Cat. Price \$40,000 Sold on to Edmonton Customer, \$36,750



## Unused Scott 10 Census by Robert Graham

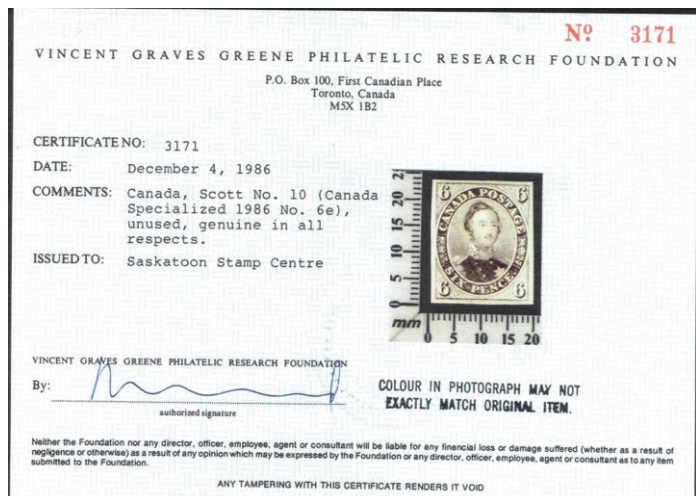


September 18, 2015 by Sparks Auctions Lot 83

Canada #10 1857 6d reddish purple Consort Imperforate on Very Thick Soft Paper, unused (no gum), with margins just touching to clear all around. There is a crease in lower right corner, visible from the back only, fine. A true Canadian rarity, missing from most advanced mint collections.

Accompanied by a 2015 Greene Foundation certificate.

Unitrade CV\$18,000. Did not Sell



Saskatoon Stamp Centre Inventory, 117085.0

Sold December, 2014

10 6d Reddish Purple on Very Thick Fibrous Soft Paper. UNUSED GEM! Thought to be FINEST KNOWN. SHOWPIECE!

Provenance

"Afab",  
Lindemann,  
Julian Smith (\$20,900 vs Canada Spec. Values, of \$12,000 & Scott \$7,000),  
Carey Fox,  
Burrus,  
Ferrari.

V.G. Greene Cert 3171.

Cat. Price 40,000      Selling for \$49,500

## Unused Scott 10 Census by Robert Graham

Saskatoon Stamp Centre Inventory, 55244.0

Same as Above

Sold May, 1997

10 6d Reddish Purple on Very Thick Fibrous Soft Paper. UNUSED with generous margins all around. Thought to be the FINEST KNOWN.

Ex Ferrari, Burrus, Carey Fox, & Julian Smith.

Cat. Price \$20,000      Selling for \$20,000

---

Saskatoon Stamp Centre Inventory, 113353.0

No Picture

Sold March, 2014

10 6d Reddish Purple on Very Thick Fibrous Soft paper. Margins just clear to generous. Unused, Filled thin spot at UR(?) comer.

V.G.Green cert

Cat. Value \$29,000 (F-VF)    Priced at \$9,500

(This in Fact may be related to the October 7, 2017 Sparks Auction: With the Repair being undone ??)

---



Saskatoon Stamp Centre Inventory, 98003.0

Sold May, 2009

10 6d Reddish Purple on Very Thick Fibrous Soft paper. Unused. Margins just cut outer frameline at top to generous other sides. Tiny pinhole entirely in margin at UL.

V.G.Green cert #1730

Cat, Value \$20,000

Priced at \$9,500

## Unused Scott 10 Census by Robert Graham



May 12, 2006 Sotheby's

6d. reddish violet, S.G.23, clear to large margins, exceptional colour, part original gum. A SUPERB EXAMPLE – ONE OF THE FINEST KNOWN. THE RAREST STAMP OF CANADA UNUSED. R.P.S. Certificate 1968

Provenance

General Robert Gill 1965

Lars Amundsen 1967

The "Consort" Collection 1977

Few have been able to include this stamp in unused condition in their collections as it is almost unobtainable. It ranks as the rarest stamp of Canada in unused condition and in this

peerless condition there are probably fewer than six recorded.

Estimate 14,000-16,000 Pounds Sold for 45,000. Cdn

---

Saskatoon Stamp Centre Inventory, 46286.0

Sold September, 1996

10 6d Reddish Purple on Very Thick Fibrous Soft paper. 4 well clear to large margins. Unused, cert, mentioning the tiny thin & surface scrape on back, otherwise Very Fine.

A BEAUTIFUL RARITY!

V.G. Greene

Canada Specialized Cat. Value \$20,000 Priced at \$9,500



## Unused Scott 10 Census by Robert Graham



1994-09-29 Robert A. Siegel Auction

6p Reddish Purple, Very Thick Soft Wove (10, SG 23).  
Unused, large even margins, rich color and fine impression

ONE OF THE RAREST PENCE ISSUES IN UNUSED CONDITION  
AND CERTAINLY AMONG THE FINEST OF THE FEW KNOWN

This superb unused copy of the 1857 printing on very thick  
wove paper was the only unused single in the vast Dale-  
Lichtenstein collection (a heavily creased and thinned strip  
of three was also offered).

The Caspary collection contained an unused single with  
minor faults, and we have been able to locate only two  
other unused singles among the important Canada sales

searched (the General Robert Gill stamp being the only equal to the one offered here).

Ex Dale-Lichtenstein. With 1993 P.F. certificate.

Stanley Gibbons cat. £11,000 Sold for 17,000 USD



1994-09-29 Robert A. Siegel Auction

6p Reddish Purple, Very Thick Soft Paper (10, SG 23).  
Unused, ample to large margins, fresh color and fine  
impression, tiny faint spot referred to as a stain in  
certificate, insignificant and unworthy of mention,  
completely sound and very attractive

A VERY FINE EXAMPLE OF ONE OF THE RAREST OF ALL  
PENCE ISSUE IN UNUSED CONDITION

With 1994 Holcombe certificate,

Stanley Gibbons cat. £11,000 Sold for 5,750 USD

## Unused Scott 10 Census by Robert Graham



1981-04-29 Robert A. Siegel Auction

1981 Rarities of the World

1857, 6p Reddish Purple (10). Margins All Around, slight thinning at top (not mentioned on accompanying P.F. Certificate), VF Appearance

Sold for 3,500

---

Saskatoon Stamp Centre Inventory, 3132.0

10 6d Reddish Purple on Very Thick Fibrous Paper. See stamp for complete description. Fine, Unused.

Priced at \$4,750

---

## Stamps Available in the Marketplace



Royal William Stamps Ltd.

Canada #10 1857 6d Reddish Purple Consort Imperforate on Very Thick Soft Paper, mint with large part original gum (rare thus) and three large to very large margins, and just touching outer frameline at bottom right, fine. A very nice example of this rare mint stamp, missing from even the most advanced collections.

Accompanied by a clear 2005 Greene Foundation certificate and a 2007 Philatelic Foundation certificate, the latter stating "light staining below the right 6" which we qualify more as trivial and does not detract from this great rarity.

Advanced collectors know how rare the 6d reddish purple on very thick soft paper is in mint condition, with most known examples having various faults. Finding a collectible example with original gum is a true rarity.

Only 2 or 3 known with OG. Similar single in Sir Gawaine Baillie sale sold for C\$45,000 in May, 2006

Unitrade CV (F-VF)      \$ 55,000      Our Price    \$ 32,500

## Unused Scott 10 Census by Robert Graham

Saskatoon Stamp Centre Inventory, 83714.0

Same as above

Sold April, 2007

10 6d Reddish Purple on Very Thick Fibrous Soft Paper, Fine-Very Fine, large part OG. Only 2 or 3 known with OG.

A similar single in Sir Gawaine Baillie sale sold for C\$45,000 in May/06.

V.G.Green cert #12849.

Cat. Value \$50,000      Priced at \$37,500

---



WIP Stamps, Available

Unused, Scott #10

CANADA: Sc.#10 (\*) 6d. Reddish Purple, on Very Thick Soft Paper, a SUPERB unused example of one of the RAREST Pence Issue in unused condition and certainly among the FINEST of the few known. Brilliant rich color, perfectly sound, SHOWPIECE!

Ex. Robson Lowe

\$75,000.00 USD



## Philatelic News



A couple of links for you. The first is a Wikipedia article about The Great Stink. This occurred during the Decimal Issue period and caused some sickness in London. Some people felt that this caused the sickness that eventually killed Prince Albert.

[The Great Stink](#)



In Detroit, a Post Office has been renamed to honor singer Aretha Franklin

[Aretha Franklin](#)

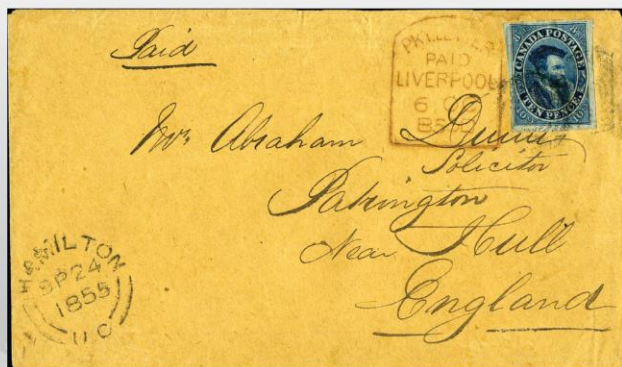
Well known Collector Robert Coulson passed away suddenly of a heart attack. Many of you may know Robert's screen name wert. He posted many threads on Stamp Community Forum and was well liked. He was extremely prolific and you could always count on him to have something new for you to read on SCF.

He was an avid flyspecker and many of his posts questioned odd marks that he found on Canadian stamps. He will be a great loss to the hobby and Canadian Philately. I know he will be missed. But he has left a huge legacy and thousands of articles on Canadian stamps.



# r. maresch & son

CANADA'S PREMIER STAMP AUCTION HOUSE SINCE 1924



For three generations and nearly a century it has been our privilege to serve the philatelic community at home and abroad. We could not be happier to be bringing the Fawn Large Queen Collection to auction at CAPEX22 and cannot wait to see all of you there. Come visit us June 9-12 at Booths 711 & 713 where we will host viewing prior to the sale.

6-2 VATA CRT • AURORA, ON • L4G 4B6 • CANADA  
(905) 726-2197 [www.maresch.com](http://www.maresch.com) (800) 363-0777

1924 - Dr Richard A R Maresch  
Procures his Licence to Deal in Stamps

1933 - William Maresch Attends WIPA,  
the First International Stamp Exhibition

1945 - Dr Richard Maresch Joins CSDA

1951 - CAPEX

1957 - First Mail Auction

1963 - First Public Auction

1973-88 - Producer of the Canada  
Specialized Postage Stamp Catalogue

1975 - William Maresch Becomes a  
Founding Member of the V G Greene  
Philatelic Expertizing Committee

1978 - CAPEX

1983 - First Sale Using a Computer

1987 - Official CAPEX Auctioneer

1996 - Official CAPEX Auctioneer

1997 - Launch of maresch.com

2017 - First Internet Only Auction

2019 - First LIVE Internet Auction



## Upcoming Shows

Now that there are Covid-19 vaccines, it may be worthwhile talking about these shows and finding out if there will be a physical show to attend. Wouldn't that be nice !



**ORAPEX 2022**

April 23-24

Nepean Sportsplex  
1701 Woodroffe Avenue  
Ottawa, Ontario



Free admission and parking.

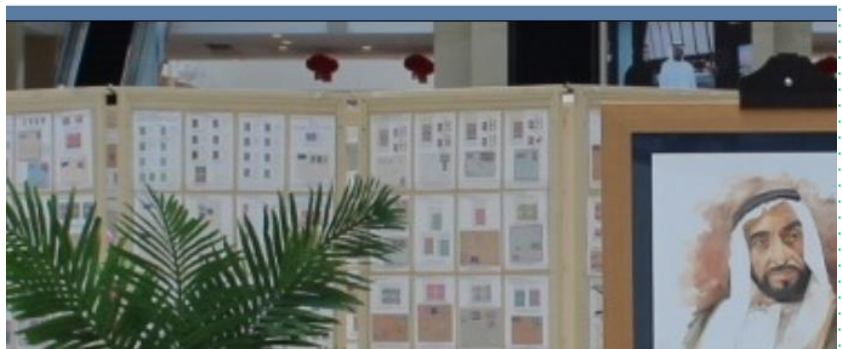


الإمارات ٢٠٢٢

المعرض الدولي للطوابع

**Emirates 2022**

World Stamp Exhibition



**Welcome**

Emirates World Stamp Exhibition 19-23 January 2022



## Upcoming Shows



CAPEX 22 Opening Ceremonies – June 9, 2022. Plan to attend CAPEX 22, the first International One Frame Stamp Championship Exhibition June 9-12, 2022 at the Metro Toronto Convention Centre, Toronto, Canada. Press the Ctrl key and Click on the Capex 22 logo to see the Capex 22 Facebook page. There is information about exhibits and photos on this event.