

PENCE-CENTS ERA STUDY GROUP

Of the British North America Philatelic Society
Volume IX, No. 4, August 2020



10c Consort Position 100 Plate Flaw from the Late Printing
Courtesy of Earl Noss

Dear Study Group Member,

A nice late printing of the 10c Consort showing the Plate Flaws from Position 100. There is a small diagonal mark in the inner oval above T of TEN. Then there is another series of small marks, one above E of CENT in inner oval, and then more small diagonal lines in the top of N of CENTS.. One might wonder if these two marks are related. There was a 2nd general plate repair done after the 26th Printing Order had started. This is one of a number of extra small flaws noticed in the Lake coloured Proof Sheet printed after the repair. For the others, check the picture in Whitworth's Page 78.

It seems that Covid-19 has not stopped philatelists from practicing their craft as seen by the superior turnout at the latest Sparks Auction sale. Even the Reserved price stamps were purchased in a very strong result, especially from the Outaouais Collection, but also from the excellent stamps and covers in their regular catalog.

With the BNAPEX 2020 cancellation, the Pence-Cents group is planning a Zoom Online meeting for this year's Study Group meeting. More on this later.

Jim Jung

In This Issue.....

Page No

Title Page (10c Consort – Position 100 Plate Flaws courtesy of Earl Noss)	1
Welcome to 22 nd Edition..... Jim Jung	2
Half Penny – The Newspaper Stamp	3
Sparks Auction Notes	5
Covers to a Canadian Gold Miner in California During Gold Rush Days	7
Canada's Five Cents Beaver Proofs Part Five..... Michael D. Smith	11
5c Beaver website Update	22
Upcoming Shows 2020	23

William S. Langs (1958-2020)

Stamp dealer William S. Langs, a familiar face on the national stamp show circuit for many years, died July 7 at age 61.

Based in New Jersey, Mr. Langs was the owner of the online retail site William Langs Stamps and a prominent stamp dealer on the eBay online marketplace. His specialties included essays and proofs of United States stamps, as well

as classic U.S. stamps, errors and varieties, postal stationery and revenue stamps.


He also dealt in coins, paper money and other collectibles.

Mr. Langs was regularly seen welcoming collectors to his table at national American Philatelic Society World Series of Philately shows.

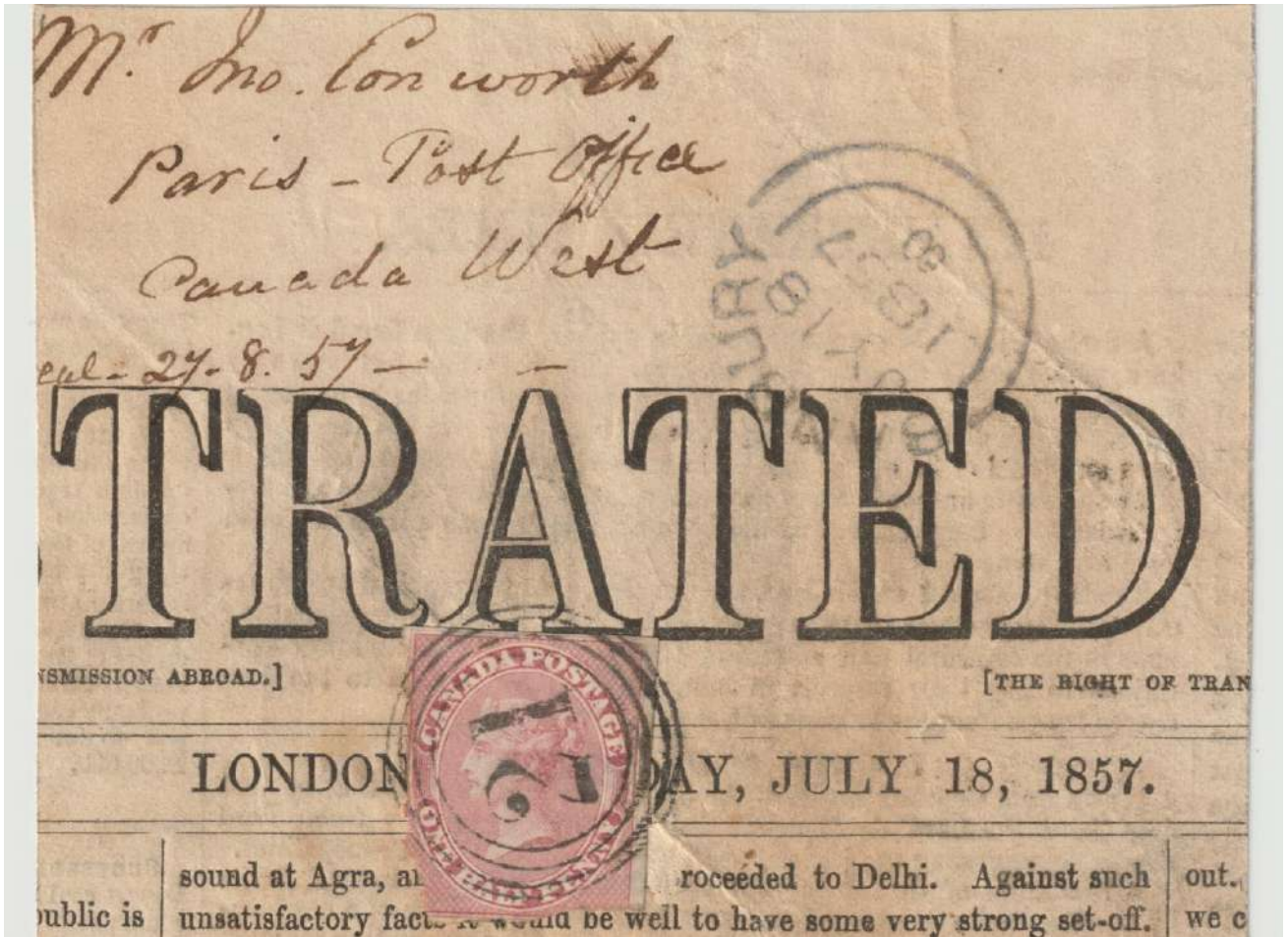
As news of Mr. Langs' death became known, fellow stamp dealers paid tribute to him as

a dealer always willing to share his knowledge with colleagues and customers.

He was also remembered by many for his deep pride in his son Brad, an officer in the U.S. Navy and graduate of the State University of New York Maritime College.

Interment services for Mr. Langs were held July 12 at Riverside Cemetery in Saddle Brook, N.J. 

Half Penny – The Newspaper Stamp by Jim Jung



The Banbury Post Office in Canada West did not open until 1885, so the double split ring is definitely from Banbury England, dated JY 18 1857. I believe this was the origin. The paper would've been out early morning, surely to make the morning Post. In 1857, England had trains to deliver their mail, and Banbury to Liverpool by train is only a few hours, so I think it had a chance of making the 53rd voyage of the Cunard ship Europa, which departed Liverpool on July 18, arriving Boston July 31. If it missed this ship, the next ship out would've been the 11th voyage of the Cunard ship Persia, departing Liverpool Jul 25 arriving New York Aug 5.

After arrival, it went to Montreal from the U.S. where Inland Revenue would have applied the half penny stamp and the four ring 21. The actual transient newspaper rate from U.K. to Canada via the United States was 1d, so the Postal Clerk maybe made an error thinking this paper came from the United States which is only a 1/2d rate. Interesting that the next ship was an Allan Line ship, where the rate would not have applied, since the rate was only for newspapers arriving via the United States.¹

1. Arfken, Leggett, Firby, Steinhart - *Canada's Pence Era, The Pence Stamps and the Canadian Mail* Page 131-134.

Half Penny – The Newspaper Stamp by Jim Jung



Just a bonus on your stamp. I just checked and it just happens to be position 22, a Major Re-Entry position. The reentry marks are most noticeable at the bottom of the letters DA and POST of CANADA POSTAGE.



Sparks Auction Notes By Jim Jung

The Sparks Auction Sale at the end of June was full of Rare and scarce high end lots and groups of stamps that had not been inspected since the 1960's. Because of the advances in philately and technology, this could warrant some interesting finds. Here are just a couple of items that I noticed when flipping through the sale online. Congratulations to the winners of these exciting lots.



Figure 1: Lot 23 above and Lot 354 below

When I saw Lot 23, I noticed the marks in the lower margin right away. These marks look like they belong to the stamp above the Misplaced Entries on Scott 9. As I kept on looking through the lots, I came upon Lot 354 and I was surprised to see the exact same marks on this stamp. So now it is clear that this is a Constant Plate variety that has not been described in the Lot Description. After checking scans of the Proof sheet from the Saskatoon Stamp Centre on Ralph Trimble's website (re-entries.com), I find that there is no similar marks on the sheet. This becomes another mystery.

Thanks to Dr. Jim Watt for providing images from a 2nd Proof Sheet showing these marks. Comparison to the margin above position 83 and below position 71 show a match to the marks below the g in stg and the 1/2 in 7 1/2. (See Figure 2) Remember that this is a sheet of 120 subjects, 12 across and 10 rows.



Figure 2: Proof Sheet positions 71 (above and 83 (below) – Courtesy Dr Jim Watt

Sparks Auction By Jim Jung



Lot 93 – Low Stroke in P variety
Position 83 (69)



Lot 343 – Plate scratch above GE
of POSTAGE Position 61 on the
trimmed plate of 100.

Two more varieties I noticed that were not described in the Lot descriptions are shown above. These are varieties of the Half Penny, and came on two separate Proof lots 93 and 343. Both these varieties are unlisted on the Half Penny but have been researched by Mike Smith since his presentation was released at the BNAPEX 2018 in Quebec City.

Lot 93 has the Low Stroke in P variety. This is a small crack that runs through the P of POSTAGE found at position 83, or 69 after the plate was trimmed. Lot 343 has a Plate scratch to the right of the GE of POSTAGE. This variety only occurs on the trimmed plate of 100 and is position 61

Covers to a Canadian Gold Miner in California During Gold Rush Days By Ron Majors

The California Gold Rush was sparked by the discovery of gold nuggets in the Sacramento Valley in early 1848. As news spread of the discovery, thousands of perspective goldminers traveled by sea and over land to get to San Francisco and the surrounding area. By the end of 1849, the non-native population of California territory was some 100,000 compared with a pre-1848 figure of less than 1000. A total of \$2 billion was extracted from the area during the Gold Rush, which peaked in 1852. Nevertheless, even though the "surface" gold was depleted by the mid-1850s, prospector's with "Gold Fever" continued to pour into California to seek their fortune in the Sierra Nevada mountains, especially around Grass Valley, Nevada County and El Dorado County. At the very least, when advanced mining techniques, such as hydraulic mining and giant dredges came about, able-bodied men still came to California to work in the mines.

Canadians were no different. So, it is not unusual to find some, but not a lot of, correspondence to and from California during the mid-1800s, the time of the pence and decimal philatelic periods of Canadian philately. Not only franked but stampless letters can be found during this period. This article is devoted to letters sent to a miner named Thomas McQueen who apparently hailed from a small village (even today it is still a village) named Eramosa, U.C., located about 5 miles northeast of Guelph.¹ At the time of this correspondence, the village had a population of less than 40. The post office opened in 1839 and the first Postmaster was Robert Dryden. Based on the handwriting, most of the letters written to Mr. McQueen were from the Postmaster's relative, Jane Dryden, who happened to be McQueen's aunt.

During the decimal period, the cross border postal rate to most of the United States when the McQueen correspondence was written was 10 cents for 1/2 an ounce or less. However, because of difficulties getting mail over land (no transcontinental railroad until May, 1869) or via New York and Panama, the U.S. West Coast rate was 15 cents (July 1, 1859-June 30, 1864) later being reduced to 10 cents (July 1, 1864-March 31, 1868). Thus, for all letters in the correspondence described here, the rate was 15 cents.



Figure 1. McQueen Cover to California Paying 15 Cent Rate

1. Horace Harrison's notes on the McQueen correspondence

Covers to a Canadian Gold Miner in California During Gold Rush Days By Ron Majors

As seen in Table 1 (next page), the letters covered here span the range from June 14, 1860 to January 17, 1861. Only one of the covers, number 3, contained a short note (dated Aug. 25) which basically checked on the status of Thomas and told him to “mind your prayers and your Bible and God will prosper you wherever you are...”. Further she noted “I stop hoping to hear from you. Write when you get this and tell us whether you are coming home or not. Your affectionate Aunt and Well Wisher, Jane Dryden”. Nothing about Thomas’s activities in Gold Country but there was a reference in the small letter to a chap named George who may have also written letter(s) to Thomas.

All letters (except number 5) are postmarked with a dated Kirkwall, U.C. circular cancel. Figure 1 shows the earliest letter sent to McQueen with a circular cancel dated June 14, 1860. The post office at Kirkwall was opened in December 1851. Many smaller post offices were not issued a hammer with changeable dates so that the postmaster had to write in the date for each letter that passed through their office. According to Campbell’s census², the Kirkwall Post Office had annual revenue of \$50-100 throughout the 1860s. Most covers reported here are pen cancelled mostly with an “X” although number 5 has a target cancellation and, instead of Kirkwall, was mailed from Eramosa. The cover in Figure 1 shows a “\$” pen cancel. Back stamps indicated that the cover transited through Rockton, U.C. and then to Hamilton that served as an exchange office for mail to the United States. Here the envelope was hand stamped “CANADA PAID 10 Cts” in red with the 10 altered to 15 using a pen and red ink. The next step would be to place the letter in a “closed bag” destined for New York and then into another bag to California shipped to Panama, transported across the Isthmus and reshipped to San Francisco, and afterwards, dispatched to Grass Valley in Nevada County. As one can see based on the few covers in Table 1, including Figure 2 below, that have been forwarded to Mountain Well, CA, from a large circular departure Grass Valley cancellation, one can determine that the total journey from Eramosa U.C. to Grass Valley took around 37 days.

Figure 2.
McQueen
Cover to
California
Paying 15 ¢
rate with 5 ¢
Nesbitt plus
Two 5 ¢
Beavers;
forwarded to
Mountain Well,
CA, 3 cents
added postage



2. Ref. F.W. Campbell, Canada Post Offices 1755-1895 Quartermen Publications, Boston, 1972

Covers to a Canadian Gold Miner in California During Gold Rush Days By Ron Majors

Mountain Well was a thriving town during the Gold Rush era and had its own post office from 1858 to July 26, 1866.³ It is now considered a ghost town and no longer exists. Grass Valley is still a thriving community in the foothills of the Sierra Nevada mountains. Its post office was established on July 10, 1851 and is still in existence. In the 1860s, in the United States when a letter was forwarded, the recipient had to pay an extra 3 cents which was the letter rate within the U.S. In my collection, I have four of the McQueen covers that were reunited by Horace Harrison years ago (see Table 1). Of these covers, two are franked with three 5 cent Beavers paying the 15-cent rate, and the other two are Nesbitt five cent postal stationery with two added 5 cent Beaver stamps. An example is shown in Figure 2. Nesbitt envelopes were first issued on February 1, 1860 at a premium over postal value. These preprinted envelopes were unpopular with the public and were seldom used.

During my search for decimal covers, I have run across several other examples of this correspondence three of which are illustrated in Figure 3. This lot was sold by the German auction firm Christoph Gaertner in their Auction Number 11, September 8-12, 2009. Another example that was included in the Robert Lee Auction #101, February 2001, and again, in the Eastern Catalog Sale 839, June 2013 is detailed in Table 1.

Table 1. Thomas McQueen Covers from Eramosa to Grass Valley and Mountain Well

Cover	Mailing date	Destination	Franking	Receiver	Source
1	June 14, 1860	Grass Valley	3 X 5 ¢	None	REM1
2	July 17, 1860	Grass Valley P.O.	5¢ Nesbitt plus 2X5¢	None	CG1
3	August 25, 1860	Grass Valley fwd Mountain Well	5¢ Nesbitt plus 2X5¢	Sept. 30, 1860, 36 days	REM2
4	August 25, 1860	Grass Valley fwd Mountain Well	5¢ Nesbitt plus 2X5¢	Sept. 30, 1860, 36 days	EA, RL HH1
5	August 30, 1860 (from Eramosa)	Grass Valley	10¢ Consort (blk-brown) plus 5¢, target cancel	None	CF
6	Sept. 6, 1860	Grass Valley	3 X 5¢	None	REM3
7	Oct. 2, 1860	Grass Valley	5¢ Nesbitt plus 2X5¢	Nov. 23, 1860, 38 days	CG2
8	Oct. 16, 1860	Grass Valley fwd Mountain Well	5¢ Nesbitt plus 2X5¢	None	REM4
9	Oct. 25, 1860	Grass Valley fwd Mountain Well	3 X 5 ¢	None	HH2
10	Jan. 17, 1861	Grass Valley	3 X 5 ¢	None	CG3

REM-Ron Majors; CF- Charles Firby, Capex 96, Gems of Canadian Philately, CG-Christoph Gaertner Auction, EA-Eastern Auction; RL-Robert Lee Auction; Horace Harrison, BNA Topics 51, No. 3, page 26,1994.

3. Durham, David L. (1998). California's Geographic Names: A Gazetteer of Historic and Modern Names of the State. Clovis, Calif.: Word Dancer Press. p. 530.

Covers to a Canadian Gold Miner in California During Gold Rush Days By Ron Majors

A word about the condition of these well-traveled covers. After a long 37-day journey from Canada and finally arriving in a post office, or other place to pick up one's mail in California, these McQueen covers would not be expected to be pristine, after arrival and handling in the gold fields. To top it off, McQueen was likely not worrying about the philatelic condition of his letters and probably stuffed them somewhere, perhaps in his pocket, satchel or "who-knows-where". Somehow, on his journeys he managed to keep these covers in readable condition, which I think is amazing.



Figure 3. McQueen Cover Lot from Christoph Gaertner Auction (slightly reduced, extracted from website).

Top: CG3; Middle: CG2;
Bottom: CG1

Canada's Five Cents Beaver Proofs Part Five By Michael D. Smith

15P - Position 36 State 1



Short entry E spandrels. H9011 = dash W of AGE

H9011

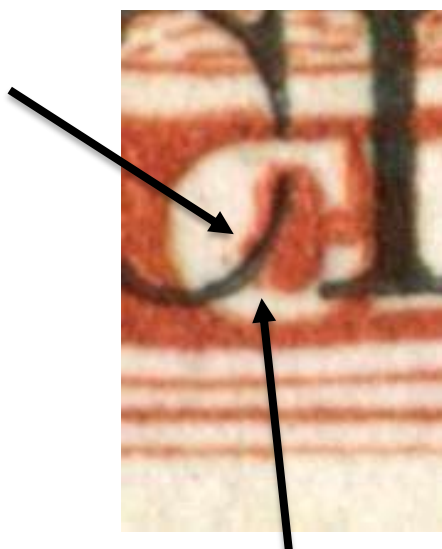


Canada's Five Cents Beaver Proofs Part Five By Michael D. Smith

Position 41 State 1



W margin guide dots. Traces of fresh entry at W. Two 'C' dots.



Canada's Five Cents Beaver Proofs Part Five By Michael D. Smith

Position 43 State 1



R. 50 = fresh entry. Pf. 86b.



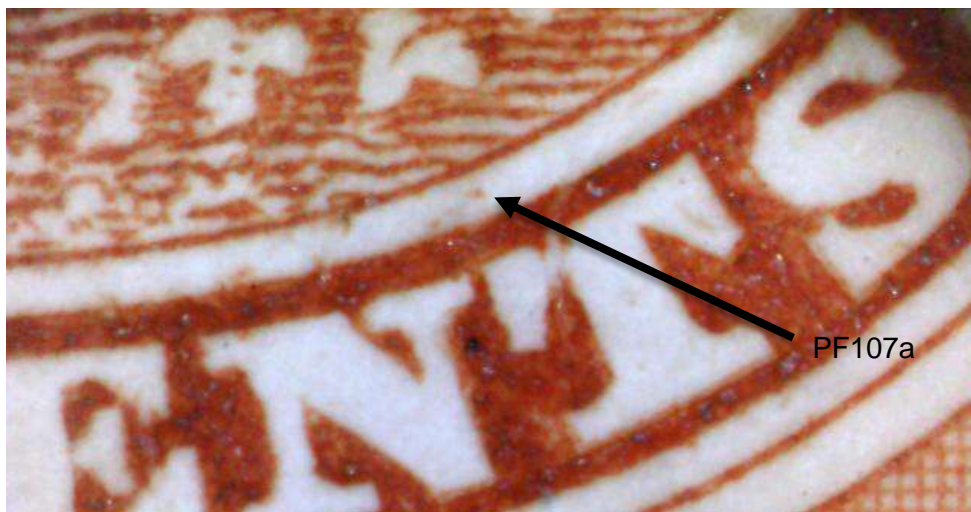
R50

Canada's Five Cents Beaver Proofs Part Five By Michael D. Smith

Position 61 State 1



W. margin guide dots. Two 'C' dots. Pf. 107a. Weak frame lines SE corner.



Canada's Five Cents Beaver Proofs Part Five By Michael D. Smith

Position 79 State 1



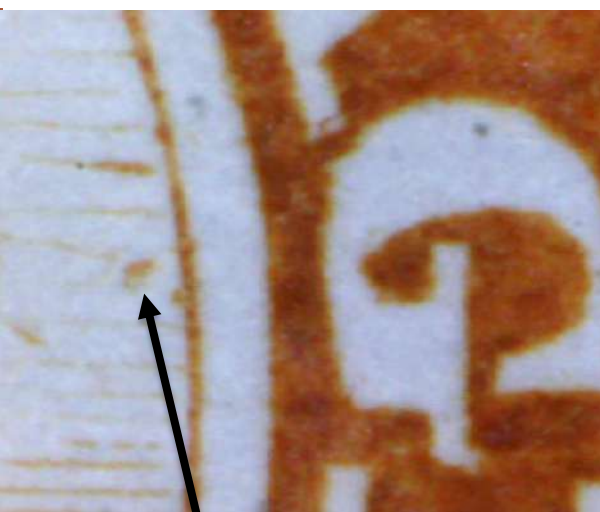
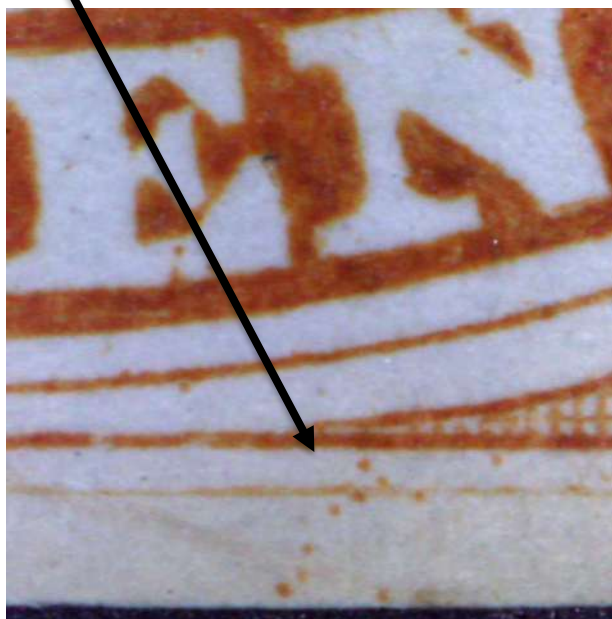
Short entry NW.

Canada's Five Cents Beaver Proofs Part Five By Michael D. Smith

15TC viii - Position 11 State 4



Dots below 'EN'. H9019 = dot below 'G' of POSTAGE.



H9019

Canada's Five Cents Beaver Proofs Part Five By Michael D. Smith

15TC viii - Positions 13, 14, 23, 24, 33, and 34 State 4

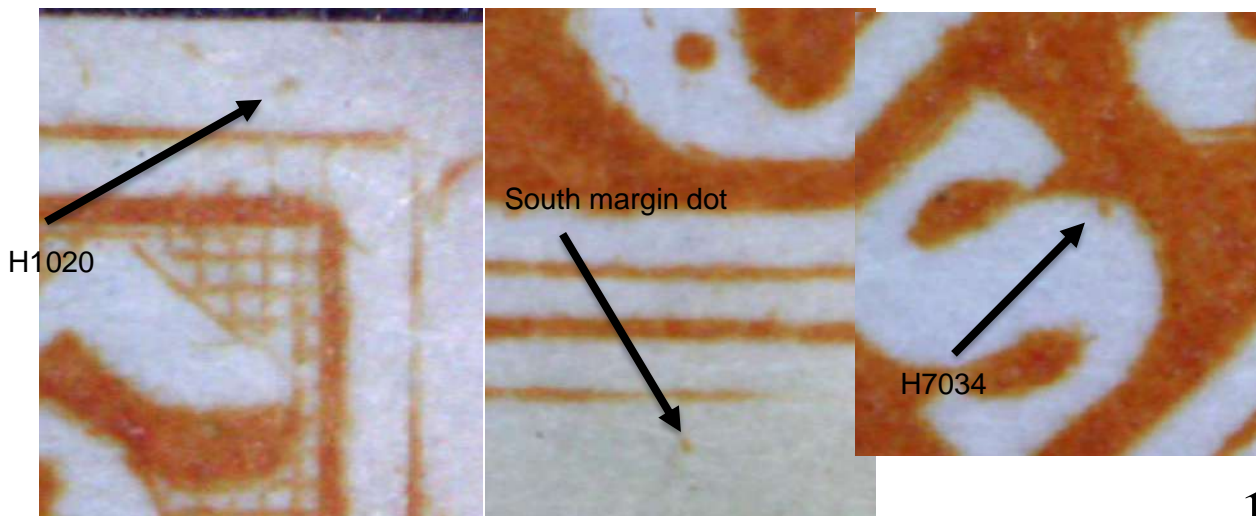


Canada's Five Cents Beaver Proofs Part Five By Michael D. Smith

15TC viii - Position 13 State 4



S margin dot weak. H1020 = dot over NE corner. H7034 weak.



Canada's Five Cents Beaver Proofs Part Five By Michael D. Smith

15TC viii - Position 14 State 4



Pf. 79b. H9021 = dots in Sun's rays.

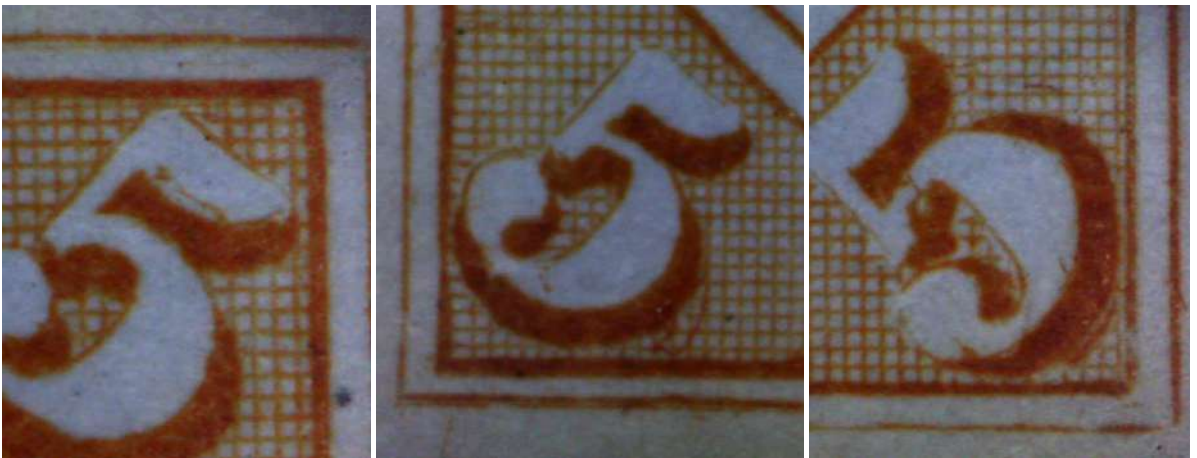


Canada's Five Cents Beaver Proofs Part Five By Michael D. Smith

15TC viii - Position 23 State 4



R. 40



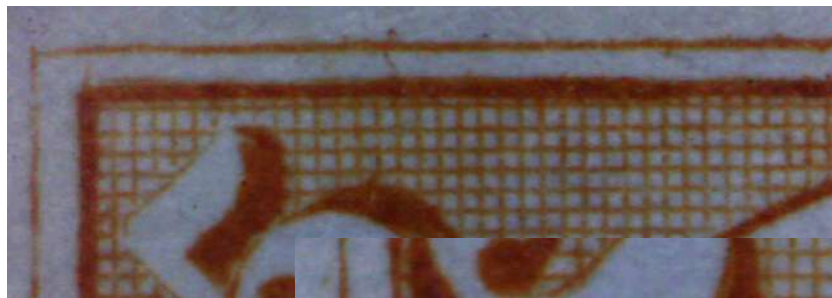
R. 40 Marks around these three 5's are indicative of this re-entry.

Canada's Five Cents Beaver Proofs Part Five By Michael D. Smith

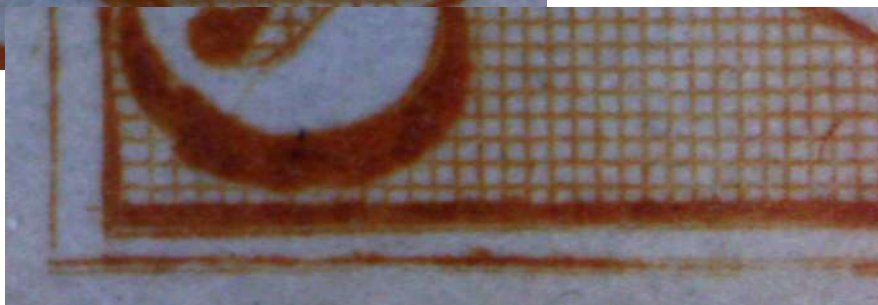
15TC viii - Position 23 State 4



New doubling as R. 63. New 'C' dot



New doubling as R. 63.
Top inner frame line
doubled UL, inner and
outer frame lines
doubled LL.



5c Beaver Website Update By Jim Jung

It was last year at the BNAPEX 2019 in Ottawa that we announced the creation of a 5c Beaver website. At that time, we stressed that this would take some time to build. Since then I have spent a lot of time marking images with Plate Flaws and Reentries on positions from 1-100 and many different states of each position.

Our Web Developer, Leo Beaudet, has been quite busy working on multiple projects and we are waiting to get all of these images placed into a database so that they can be searched for, viewed and used for matching stamps in your collection. Access to the website will be free with your BNAPS membership.

The website will contain stamps from the collections of Earl Noss, Mike Smith and myself. There will be a scanned image of each stamp naming the plate position, state and description of the Constant Plate markings. A second image can be viewed that has each Plate Flaw or Reentry circled in black with the Whitworth or Huff number beside it.

It is an exciting time for us as technology adds to our hobby in a very useful way. Here is a link to our Demo website that contains a small sample of the images we have. This Demo page does not have the search features and much of the other functionality of the website but can be used to look at the way the images will be presented and formatted.

<http://www.bnaps.org/studygroups/PenceCents/1859-5cBeaver/5cBeaverViewerDemo.php>

Application for Membership in the BNAPS Pence/Cents Study Group

If you have an interest in early Canadian and BNA stamps, covers and postal history including stampless, please fill out and e-mail the following information to: jimjung8@gmail.com (We really just need your info in an email and you're in for free, as a BNAPS member)

Name: _____

Street

Address: _____ City: _____

Province/State: _____ Postal/Zip Code _____

E-mail _____

FAX: _____ Telephone: _____

Describe your interest area(s):

Upcoming Shows



CAPEX 22 Opening Ceremonies – June 9, 2022. Plan to attend CAPEX 22, the first International One Frame Stamp Championship Exhibition June 9-12, 2022 at the Metro Toronto Convention Centre, Toronto, Canada. Press the Ctrl key and Click on the Capex 22 logo to see the Capex 22 Facebook page. There is information about exhibits and photos on this event.