



NEWFOUNDLAND NEWSLETTER BNAPS NEWFOUNDLAND STUDY GROUP



Chairman & Editor:
Treasurer/Circulation:

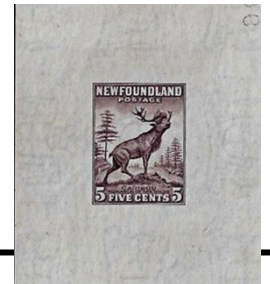
Malcolm Back, 97 Stuart Street, Stouffville, ON L4A 4S4
Martin Goebel, 13 O'Mara Place, St. John's NL A1A 5B7

mback1217@rogers.com
goebel@nf.sympatico.ca

Page 1

CONTENTS: Issue Number 191, April-June. 2023

Page 1	Note from the Editor Courtesy of Earl Noss	Malcolm Back
Page 2-15	Newfoundland: Further Exciting Discovery Findings in Design Sizes of Perkins Bacon & Co. 1932 First Resources Issues.	John M. Walsh, <i>FRPSC</i> and Robin Moore
Pages 16-19	Otto Bickel, A Stamp Dealer from Germany	Klaus Wehlt



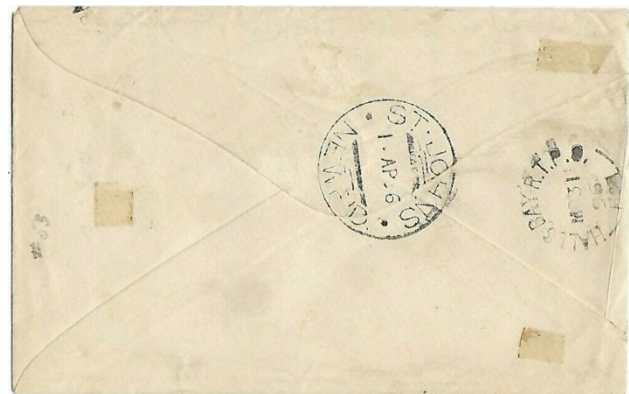
Note from the Editor

In this issue we conclude the series on Design Sizes of Perkins Bacon & Co 1932 First Resources Issues by John M. Walsh, *FRPSC* and Robin Moore. These articles first appeared in the "Maple Leaves", the Journal of the Canadian Philatelic Society of Great Britain. We thank the authors for granting permission to reproduce this series of articles in our Study Group Newsletter.

Courtesy of Earl Noss



Mail to Ayres in St. John's, posted in Trinity, Newfoundland



Reverse with Hall's Bay R.T.P.O and St. John's receiving cancel.



15iv - major re-entry
in NEWFOUNDLAND



Imprint and retouch in CENTS



**NEWFOUNDLAND: FURTHER EXCITING DISCOVERY FINDINGS IN DESIGN
SIZES OF PERKINS BACON & Co 1932 FIRST RESOURCES ISSUES.**

by John M. Walsh, *FRPSC* and Robin Moore

This is a follow up on our two research articles on the subject of stamp image design sizes which were printed in *Maple Leaves* of January and July 2020. They had been undertaken to determine the ability of Perkins Bacon & Co from 1932 to May 1941 to produce both size types of printed stamp images for the 1932 First Resources issue prior to their business being destroyed during the war. A massive hunt was undertaken to find further proof that the information in those initial articles was correct in its assertions. This was done, because those two articles were the first to report and show some image design size findings that gave proof of the incorrect statements of many published reports and even catalogue listings. They have continuously listed and assigned the Newfoundland large postage stamp images in the 21 mm size and with the 13.5 x 13.5 as well as 13.3 x 13.3 perforations as being only from the 1941-49 Waterlow & Sons printing company production.

From co-author Moore's Newfoundland 1932 issue stamp collection containing many stamp development items, further in-depth study was undertaken. Even though this collection had many development items, the *Walsh Newfoundland Specialized Stamp Catalogue (NSSC)* does have a greater listing of the 1932 development items that are known to exist. From another collection that had a holding of 2500+ covers the search for use on cover was undertaken. From this cover group another small finding was discovered that shows the stamp image large size difference being postally used.

From this 1932 stamp development collection a comparison of all this stamp issue image sizes was undertaken. We believe that this is the first deep study of these stamp image sizes. We undertook to use the same stamp item which is listed and shown (**1932 die I; 21 mm; Gum; imperf. black; wmkd**) to do all the size comparisons. A large, detailed listing is provided overleaf of our examined proof and stamp material that originated from the Perkins Bacon & Co printing presses. We have found that usually when this material is publicly sold, all attention is given to stating the width and height of the piece of paper that the die proof image is positioned upon. Attention was rarely given to the more important and required information, which is the size of the die proof printed image sitting on that sheet of paper. Our research unearthed some completely unexpected findings. These findings provide positive proof that both wet paper and dry paper presses were in use by the Perkins Bacon & Co printing company at the same time in 1932. The findings for the NSSC 177 2¢ green die II image size 21 mm are spectacular. Never has this finding been observed or reported since its issuance in 1932; a time frame of 90 years. The findings concerning the NSSC 176 2¢ green die I sized 20.5 mm also confirms the use of the original wet paper printing press type. The original finding of both dies printed in their separate image sizes as booklet panes was most momentous.

With the NSSC 180 4¢ rose lake is provided the findings of the 21 mm size used on covers pre-1941. With the 5¢ Caribou labeled NSSC 181 die I and NSSC 182 die II is provided overwhelming proof that the 21 mm and both perforations 13.5 x 13.5 and 13.3 x 13.3 belong to the 1932 Perkins Bacon & Co printing presses; definitely not with the 1941 Waterlow and Sons presses as many others continue to insist.

Legend for listings: COE = colour of issue

NG = no gum

wmkd = has embedded coat of arms

albino = un-inked number

unwmkd = no embedded coat of arms

stamp paper = wmkd paper to imprint stamp images; wove = not stamp paper

5¢ Caribou has generic 'violet' colour listed for its shades; identifier is die I or die II

ii = shows item is 21 mm; Gum; wmkd; stamp paper; and can be found used on cover

two stamp sizes seen in this issue: >20.0, <20.5 mm written for ease as 20.5 mm, and the other being 21 mm.



NEWFOUNDLAND: FURTHER EXCITING DISCOVERY FINDINGS IN DESIGN
SIZES OF PERKINS BACON & Co 1932 FIRST RESOURCES ISSUES.

- continued

1¢ green has been reported issued as 20.5 mm 13.5 x 13.5 stamp
January 02 1932, **found all are** 20.5 mm NSSC 173
imperf; black; 20.5 mm; NG; unwmkd; wove paper
imperf; COE; 20.5 mm; Gum; wmkd; stamp paper
black; 20.5 mm; die proof # albino; NG; wmkd; stamp paper
COE; 20.5 mm; die proof; NG; unwmkd; wove paper (*manuscript: final; 5/6/31*)
COE; 20.5 mm; progressive die proof; NG; unwmkd; wove paper (*manuscript: final; 22/5/31*)
COE; 20.5 mm; progressive die proof; NG; unwmkd; wove paper (*manuscript: final; 26/5/31*)
COE; 20.5 mm; progressive die proof with frame & words; NG; unwmkd; wove paper
COE; 20.5 mm; progressive die proof; NG; unwmkd; wove paper (*manuscript: Final; Old Colour*)
COE varieties; 20.5 mm; imperf. horiz; perf. 13.2; Gum; wmkd; stamp paper
COE varieties; 20.5 mm; perf. 13.5 x 13.5; plate 1, 2; Gum; wmkd; stamp paper
Booklet pane; 20.5 mm; perf. 13.2 x 13.2; Gum; wmkd; stamp paper
gutter on Booklet item; 20.5 mm; perf. 13.2 x imperf. horiz.; Gum; wmkd; stamp paper
gutter on Booklet item; 20.5 mm; perf. 13.2 x 13.2; has gutters; Gum; wmkd; stamp paper
Booklet pane; 20.5 mm; perf. 13.2 x 13.2 with imperf. bottom margin.; Gum; wmkd; stamp paper

1¢ grey has been reported issued as 20.5 mm 13.5 x 13.5 stamp August 15, 1932 NSSC 174
imperf. black; 21 mm; guideline center right; NG; unwmkd; wove paper
imperf. black; 21 mm; no guideline center right; NG; unwmkd; wove paper
imperf; black; 20.5 mm; NG; unwmkd; wove paper
imperf; COE; 20.5 mm; Gum; wmkd; stamp paper
imperf; COE; 20.5 mm; NG; unwmkd; wove paper (lathework)
imperf; COE; 20.5 mm; Gum; wmkd; stamp paper (has centre line right of design)
COE varieties; 20.5 mm; perf. 13.5 x 13.5; plate 1, 2, 3, 4, 5, 6; Gum; wmkd; stamp paper
Booklet pane; 20.5 mm; perf. 14 x 14; Gum; wmkd; stamp paper
Booklet pane; 20.5 mm; perf. 13.5 x 13.5; Gum; wmkd; stamp paper
Booklet pane; 20.5 mm; perf. 13.75 x 13.75; Gum; wmkd; stamp paper

2¢ red die I has been reported issued as 20.5 mm 13.5 x 13.5 stamp January 02 1932 NSSC 175
imperf; black; 21 mm; NG; unwmkd; wove paper
imperf; COE; 20.5 mm; Gum; wmkd; stamp paper
COE; 20.5 mm; die proof; NG; unwmkd; wove paper
COE; 20.5 mm; die proof; NG; unwmkd; wove paper (finish line at 3 o'clock)
COE; 20.5 mm; die proof #; NG; wmkd; stamp paper
COE varieties; 20.5 mm; imperf. horiz; perf. 13.2; Gum; wmkd; stamp paper (imperf. top margin)
COE varieties; 20.5 mm; perf. 13.5 x 13.5; plate 1 rev, 2 rev, 3 rev; Gum; wmkd; stamp paper
Booklet pane; 20.5 mm; perf. 13.2 x 13.2; Gum; wmkd; stamp paper
gutter on Booklet pane; 20.5 mm; perf. 13.2 x 13.2; Gum; wmkd; stamp paper
Booklet pane; 20.5 mm; perf. 13.5 x 13.5; Gum; wmkd; stamp paper



**NEWFOUNDLAND: FURTHER EXCITING DISCOVERY FINDINGS IN DESIGN
SIZES OF PERKINS BACON & Co 1932 FIRST RESOURCES ISSUES.**

- continued

2¢ green die I has been reported issued as 20.5 mm 13.5 x 13.5 stamp August 15, 1932, **found all are 20.5 mm** ; has dot in O of TWO NSSC 176

imperf; COE; 20.5 mm; NG; wmkd; stamp paper
black; 20.5 mm; die proof # 967 rev, albino; NG; unwmkd; wove paper
COE; 20.5 mm; die proof # albino; NG; wmkd; stamp paper
COE varieties; 20.5 mm; double print; Gum; wmkd; stamp paper
COE varieties; 20.5 mm; perf. 13.5 x 13.5; plate 1 rev, 2 rev, 3 rev; Gum; wmkd; stamp paper
COE varieties; 20.5 mm; plate 3 rev; Gum; wmkd; stamp paper
Booklet pane; 20.5 mm; perf. 14 x 14; Gum; wmkd; stamp paper
Booklet pane; 20.5 mm; perf. 13.5 x 13.5; Gum; wmkd; stamp paper
Booklet pane; 20.5 mm; perf. 13.75 x 13.75; Gum; wmkd; stamp paper

2¢ green die II has been reported issued as 20.5 mm 13.5 x 13.5 stamp August 15, 1932. Dot removed. NSSC 177
ii Discovered; all green die II stamps issued as 21 mm 13.5 x 13.5 stamp Aug. 15, 1932

imperf; indigo black; 21 mm; NG; unwmkd; wove paper imperf; COE; 21 mm; NG; wmkd; stamp paper
ii imperf; COE; 21 mm; Gum; wmkd; stamp paper imperf; COE; 21 mm; NG; unwmkd; blue bookend paper
black; 21 mm; die proof # 1018 rev, albino; NG; unwmkd; wove paper
Colour Trial; violet; 21 mm; NG; unwmkd; wove paper
COE varieties; 21 mm; imperf. vert; perf. 13.5; Gum; wmkd; stamp paper (right margin)
COE varieties; 21 mm; imperf. vert; perf. 14.2; Gum; wmkd; stamp paper
ii COE varieties; 21 mm; perf. 13.5; Gum; wmkd; stamp paper
ii COE varieties; 21 mm; offset; perf. 13.5; Gum; wmkd; stamp paper
ii COE varieties; 21 mm; imperf. plate 4; Gum; wmkd; stamp paper
ii COE varieties; 21 mm; perf. 13.5 x 13.5; plate 2, 4; Gum; wmkd; stamp paper
ii COE varieties; 21 mm; plate 4; perf. 13.5;
horiz. strip 10 with centre row imperf. all sides; Gum; wmkd; stamp paper
ii COE varieties; 21 mm; perf. 13.5; Gum; wmkd; stamp paper on cover
all Booklet panes; 21 mm; perf. 13.5 x 13.5; Gum; wmkd; stamp paper

3¢ orange brown has been reported issued as 20.5 mm 13.5 x 13.5 stamp January 02 1932, **found all are 20.5 mm** NSSC 178

imperf; COE; 20.5 mm; Gum; wmkd; stamp paper
COE; 20.5 mm; die proof; NG; unwmkd; wove paper
black; 20.5 mm; die proof #; NG; unwmkd; wove paper
COE varieties; 20.5 mm; imperf. horiz; perf. 13.2; Gum; wmkd; stamp paper (top margin)
COE varieties; 20.5 mm; imperf. horiz; perf. 13.2; Gum; wmkd; stamp paper (bottom margin)
COE varieties; 20.5 mm; imperf. horiz; perf. 13.2; Gum; wmkd; stamp paper
COE varieties; 20.5 mm; perf. 13.5 x 13.5; plate 1 rev, 2, 3; Gum; wmkd; stamp paper
four wide margins on Booklet block; 20.5 mm; imperf.; Gum; wmkd; stamp paper
Booklet pane; 20.5 mm; perf. 13.2 x 13.2; Gum; wmkd; stamp paper
Booklet pane; 20.5 mm; perf. 13.5 x 13.5; Gum; wmkd; stamp paper
Booklet pane; 20.5 mm; perf. 14 x 14; Gum; wmkd; stamp paper
Booklet pane; 20.5 mm; perf. 13.75 x 13.75; Gum; wmkd; stamp paper



**NEWFOUNDLAND: FURTHER EXCITING DISCOVERY FINDINGS IN
DESIGN SIZES OF PERKINS BACON & Co 1932 FIRST RESOURCES ISSUES.**

- continued

4¢ violet has been reported issued as 20.5 mm 13.5 x 13.5 stamp January 02, 1932, NSSC 179
imperf; black; 21 mm; NG; unwmkd; wove paper
black; 21 mm; die proof #; NG; unwmkd; wove paper
COE; 20.5 mm; die proof # albino; NG; wmkd; stamp paper

4¢ rose lake has been reported issued as 20.5 mm 13.5 x 13.5 stamp August 15, 1932, NSSC 180
imperf; black; 21 mm; NG; unwmkd; wove paper
imperf; COE; 20.5 mm; Gum; wmkd; stamp paper
imperf; COE; 21 mm; NG; unwmkd; brown manila paper
imperf; COE; 21 mm; NG; wmkd; stamp paper
COE; 20.5 mm; die proof #; NG; wmkd; stamp paper
COE varieties; 20.5 mm; imperf. horiz; perf. 14 x 14; Gum; wmkd; stamp paper
COE varieties; 20.5 mm; block imperf. horiz & vert.; perf. 13.7 right side; Gum; wmkd; stamp paper
COE varieties; 20.5 mm; perf. 13.5 x 13.5; plate 2 rev, 3; Gum; wmkd; stamp paper
COE varieties; 20.5 mm; perf. 14 x 13.7; plate 2 rev; Gum; wmkd; stamp paper
COE varieties; 20.5 mm; perf. 13.7 x 13.5; plate 2 rev; Gum; wmkd; stamp paper
COE varieties; 20.5 mm; perf. 13.9 x 13.9; plate 2 rev; Gum; wmkd; stamp paper
ii COE varieties; 21 mm; perf. 13.5 x 13.5; Gum; wmkd; stamp paper on cover 13 Oct 1936
ii COE varieties; 21 mm; perf. 13.5 x 13.5; Gum; wmkd; stamp paper on cover 14 Nov 1936
ii COE varieties; 21 mm; perf. 13.5 x 13.5; Gum; wmkd; stamp paper on cover 14 Dec 1936

5¢ violet; die I has been reported issued as 20.5 mm 13.5 x 13.5 stamp January 02 1932; no grass by frame;
antler even. NSSC 181
imperf; black; 21 mm; NG; unwmkd; wove paper
imperf; black; 21 mm; Gum; wmkd; stamp paper
imperf; COE; 20.5 mm; NG; wmkd; stamp paper
imperf; COE; 20.5 mm; Gum; wmkd; stamp paper
ii imperf; COE; 21 mm; Gum; wmkd; stamp paper
COE; 20.5 mm; die proof; NG; unwmkd; wove paper (*manuscript*: designed; Final 29-7-31)
COE; 20.5 mm; die proof #; NG; wmkd; stamp paper
COE; 20.5 mm; die proof # albino; NG; wmkd; stamp paper
COE varieties; 20.5 mm; perf. 14 x 14; Gum; wmkd; stamp paper
COE varieties; 20.5 mm; imperf. vert; perf. 13.5 x 13.5; Gum; wmkd; stamp paper
ii COE varieties; 21 mm; perf. 13.5 x 13.5; Gum; wmkd; stamp paper
ii COE varieties; 21 mm; perf. 13.3 x 13.3; Gum; wmkd; stamp paper
ii COE varieties; 21 mm; perf. 13.3 x 13.3; Gum; wmkd; stamp paper on cover 14 Nov 1941
ii COE varieties; 21 mm; perf. 13.3 x 13.3; Gum; wmkd; stamp paper on cover 21 Nov 1941
ii COE varieties; 21 mm; perf. 13.5 x 13.5; Gum; wmkd; stamp paper on cover 22 Oct 1942
ii COE varieties; 20.5 mm; perf. 13.3 x 13.3; Gum; wmkd; stamp paper on cover 7 June 1938



**NEWFOUNDLAND: FURTHER EXCITING DISCOVERY FINDINGS IN
DESIGN SIZES OF PERKINS BACON & Co 1932 FIRST RESOURCES ISSUES.**

- continued

5¢ violet; die II has been reported issued as 20.5 mm 13.5 x 13.5 stamp August 15, 1932, grass by frame; antler higher NSSC 182

imperf; black; 21 mm; NG; unwmkd; wove paper

imperf; COE; 20.5 mm; Gum; wmkd; stamp paper

imperf; COE; 21 mm; NG; wmkd; stamp paper

ii imperf; COE; 21 mm; Gum; wmkd; stamp paper

COE varieties; 20.5 mm; perf. 14.2 x 14.2; Gum; wmkd; stamp paper

ii COE varieties; 21 mm; imperf. vert; perf. 14.2 x 14.2; Gum; wmkd; stamp paper

ii COE varieties; 21 mm; perf. 13.5 x 13.5; Gum; wmkd; stamp paper

COE varieties; 20.5 mm; perf. 13.5 x 13.5; plate 2 rev, 3, 4, 5, 6, 7; Gum; wmkd; stamp paper

imperf. COE varieties; 21 mm; *manuscript*: plate 4; full lathework left margin; NG; unwmkd; wove paper

ii COE varieties; 21 mm; perf. 13.5 x 13.5; Gum; wmkd; stamp paper on cover 16 Apr 1937

ii COE varieties; 21 mm; perf. 13.5 x 13.5; Gum; wmkd; stamp paper on cover 19 Apr 1937

ii COE varieties; 21 mm; perf. 13.5 x 13.5; Gum; wmkd; stamp paper on cover 28 Apr 1938

ii COE varieties; 21 mm; perf. 13.5 x 13.5; Gum; wmkd; stamp paper on cover 17 Apr 1941

6 cent has been reported issued as 20.5 mm 13.5 x 13.5 stamp January 02 1932, NSSC 183

imperf; black; 21 mm; NG; unwmkd; wove paper

imperf; COE; 20.5 mm; NG; unwmkd; thin snappy wove paper

Black; 20.5 mm; die proof #; NG; unwmkd; wove paper

COE; 20.5 mm; die proof #; NG; wmkd; stamp paper

7 cent has been reported issued as 20.5 mm 13.5 x 13.5 stamp August 15, 1932, NSSC 184

imperf; black; 21 mm; NG; unwmkd; wove paper

imperf; COE; 21 mm; NG; unwmkd; wove paper

COE; 20.5 mm; die proof; NG; unwmkd; wove paper

Black; 20.5 mm; die proof #; NG; wmkd; stamp paper

COE varieties; 20.5 mm; imperf. vert; perf. 14.2; Gum; wmkd; stamp paper

8 cent has been reported issued as 20.5 mm 13.5 x 13.5 stamp August 15, 1932. NSSC 185

imperf; black; 21 mm; NG; unwmkd; wove paper

imperf; COE; 20.5 mm; Gum; wmkd; stamp paper

Black; 20.5 mm; die proof #; NG; wmkd; stamp paper

ii COE varieties; 21 mm; perf. 13.5 x 13.5; Gum; wmkd; stamp paper on cover 01 Oct 1932

10 cent has been reported issued as 20.5 mm 13.5 x 13.5 stamp January 02 1932, NSSC 186

imperf; black; 21 mm; NG; unwmkd; wove paper

imperf; COE; 21 mm; NG; wmkd; stamp paper

imperf; COE; 20.5 mm; Gum; wmkd; stamp paper

COE; 21 mm; die proof #; NG; wmkd; stamp paper

Orange; 21 mm; die proof; NG; unwmkd; wove paper



**NEWFOUNDLAND: FURTHER EXCITING DISCOVERY FINDINGS IN
DESIGN SIZES OF PERKINS BACON & Co 1932 FIRST RESOURCES ISSUES.**

- continued

14 cent has been reported issued as 20.5 mm 13.5 x 13.5 stamp January 02 1932, NSSC 187
imperf; black; 21 mm; NG; unwmkd; wove paper
imperf; COE; 20.5 mm; Gum; wmkd; stamp paper
black (deep colour; heavy ground shade); 20.5 mm; die proof; NG; wmkd; stamp paper

15 cent has been reported issued as 20.5 mm 13.5 x 13.5 stamp January 02 1932 NSSC 188
imperf; black; 21 mm; NG; unwmkd; wove paper
imperf; COE; 20.5 mm; Gum; wmkd; stamp paper
imperf; COE; 20.5 mm; NG; wmkd; stamp paper
COE; 20.5 mm; die proof #; NG; wmkd; stamp paper
COE; 21 mm; die proof; NG; unwmkd; wove paper

20 cent has been reported issued as 20.5 mm 13.5 x 13.5 stamp January 02 1932, NSSC 189
imperf; black; 21 mm; NG; unwmkd; wove paper
imperf; COE; 20.5 mm; Gum; wmkd; stamp paper
COE; 20.5 mm; die proof; NG; unwmkd; wove paper

24 cent has been reported issued as 20.5 mm 13.5 x 13.5 stamp August 15 1932, NSSC 190
imperf; black; 21 mm; NG; unwmkd; wove paper
imperf; COE; 20.5 mm; Gum; wmkd; stamp paper
COE; 20.5 mm; die proof; NG; unwmkd; wove paper
COE; 20.5 mm; die proof #; NG; wmkd; stamp paper
COE; 21 mm; progressive die proof with frame & words; NG; unwmkd; wove paper

25 cent has been reported issued as 20.5 mm 13.5 x 13.5 stamp January 02 1932, NSSC 191
imperf; black; 21 mm; NG; unwmkd; wove paper
imperf; deep colour black; 21 mm; NG; unwmkd; wove yellow paper imperf;
COE; 20.5 mm; Gum; wmkd; stamp paper
COE; 20.5 mm; die proof #; NG; wmkd; stamp paper
COE varieties; 20.5 mm; imperf. horiz; perf. 14.2; Gum; wmkd; stamp paper

30 cent has been reported issued as 20.5 mm 13.5 x 13.5 stamp January 02 1932, NSSC 192
imperf; COE; 20.5 mm; Gum; wmkd; stamp paper
COE; 20.5 mm; progressive die proof; NG; unwmkd; wove paper
COE; 20.5 mm; die proof; NG; wmkd; stamp paper
black; 20.5 mm; die proof #; NG; unwmkd; wove paper
Colour Trial; purple; 20.5 mm; die #; NG; unwmkd; wove paper
black; 21 mm; photographic essay with drawn box frame; NG; unwmkd; on card

48 cent has been reported issued as 20.5 mm 13.5 x 13.5 stamp January 01 1938 NSSC 193
imperf; black; 21 mm; NG; unwmkd; wove paper
imperf; black; 20.5 mm; NG; unwmkd; wove paper imperf;
COE; 20.5 mm; Gum; wmkd; stamp paper

**NEWFOUNDLAND: FURTHER EXCITING DISCOVERY FINDINGS IN
 DESIGN SIZES OF PERKINS BACON & Co 1932 FIRST RESOURCES ISSUES.**

- continued

This study now provides many images that present the findings better than in the written form.

The various comparisons throughout this study used the same strip of 5¢ Caribou stamps as follows: 5¢ die I, 21mm perf 12.5 x 12.5; versus 5¢ die I, 20.5mm perf 13.5 x 13.5; versus 5¢ die II 20.5mm perf 13.5 x 13.5



These illustrations are included to show that the presses of Perkins Bacon & Co of 1932 to 1941 consisted of two types; one did wet paper printing and another did dry wove and dry pregummed paper printing.

The two NSSC 175 2 cent red items shown above demonstrate the printing of the same sized die on two different paper types. The die proof on the left is in watermarked (wmkd) stamp paper and that on the right is on unwatermarked (unwmkd) wove paper.

Presented below are two 2 cent die proofs from two different sized dies of NSSC176 and NSSC 177. The dies have been printed on the same product. The comparison strips overlaid are those noted above.



Figure 1; 2 cent die I (dot in O of TWO); 20.5mm, black on wove paper unwmkd; #967 rev albino.

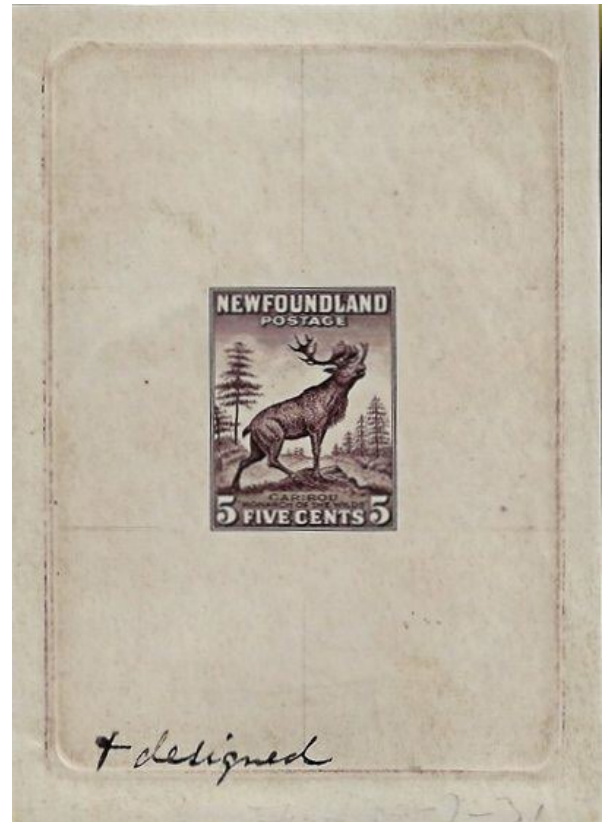
Figure 2; 2 cent die II (dot in O of TWO removed); 21mm; black on wove paper unwmkd; #1018 rev albino.

**NEWFOUNDLAND: FURTHER EXCITING DISCOVERY FINDINGS IN
 DESIGN SIZES OF PERKINS BACON & Co 1932 FIRST RESOURCES ISSUES.**

- continued



Figure 3; Two booklet blocks - at top NSSC 176 die I and below inverted NSSC 177 die II, clearly showing the difference in design sizes.



This group of three die proofs are all of the 5 cent Caribou die I.

The two above are both on the same watermarked stamp paper with the one on the left showing an inked die # and that on the right showing an un-inked (albino) die number. The die proof on the right is on unwatermarked wove paper and shows a manuscript 'designed; Final 29-7-31' inscription.

All three are from the same die I and show the same design size of 20.5mm.

**NEWFOUNDLAND: FURTHER EXCITING DISCOVERY FINDINGS IN
 DESIGN SIZES OF PERKINS BACON & Co 1932 FIRST RESOURCES ISSUES.**

- continued



Grouping of 5 cent Caribou stamps with the top three images being our standard comparators of I) 1932 die II 20.5mm; gum; perf 13.5; wmkd II) 1932 die I 20.5mm; gum; perf 13.5; wmkd and III) 1941 Waterlow printing die I 21mm; gum; perf 12.5; wmkd.

Below these we show IV) 1932 die II 21mm; gum; imperf between vertical perf 14.2; wmkd then V) 1932 die I 21mm; gum; imperf black; wmkd (*this item used to measure and compare all the other 1932 items*) then VI) 1932 die II 20.5mm; gum; imperf; wmkd and finally the bottom row shows at left 1932 die II 21mm; gum; perf 13.5; wmkd and at right 1932 die I; 21mm; gum; perf 13.3; wmkd.

Note that all of the 1932 items are Perkins Bacon printings.



Figure 4; 5 cent Caribou; 21mm; die II; manuscript '4'; full lathework; NG; unwmkd; wove paper



**NEWFOUNDLAND: FURTHER EXCITING DISCOVERY FINDINGS IN
DESIGN SIZES OF PERKINS BACON & Co 1932 FIRST RESOURCES ISSUES.**

- continued

On the following two pages we show a group of nine 5 cent Caribou die II imperforate pairs which were sold by Kasimir Bileski.

His letter providing evidence of the provenance of these items is shown here on the right.

The text of the letter reads as follows:-

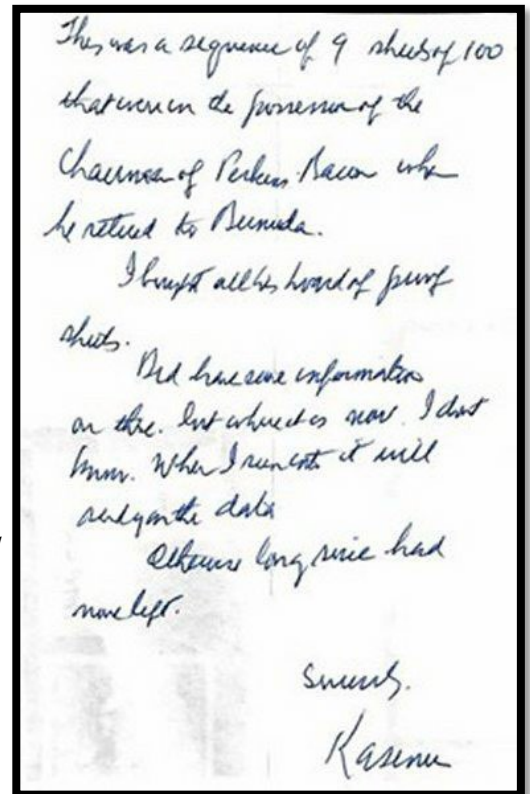
This was a sequence of 9 sheets of 100 that were in the possession of the Chairman of Perkins Bacon when he returned to Bermuda.

I bought all of the hoard of proof sheets. Did have some information on these but where it is now, I don't know.

When I run into it will submit the data. Otherwise long since had more left.

Sincerely, Kasimir.

It will be noted that the vertical gutter spacing differs depending on the plate used.



On left, from top to bottom:

Plate 2; 21mm; NG; unwmkd; thin wove. Randomly violet stamped *Plate Ptrs 7 Mar 1939*

Plate 2; 20.5mm; NG; unwmkd; wove

Plate 2; 20.5mm; NG; unwmkd; wove.

On right, from top to bottom:

Plate 3; 20.5mm; NG; unwmkd; Wove; verso Blue Moiré

Plate 4; 21mm; NG; unwmkd; Wove.; Top of sheet written *very first stage.*

Plate 4; 20.5mm; NG; unwmkd; wove.



**NEWFOUNDLAND: FURTHER EXCITING DISCOVERY FINDINGS IN
 DESIGN SIZES OF PERKINS BACON & Co 1932 FIRST RESOURCES ISSUES.**

- continued



On the left, from top to bottom:

Plate 4; 21mm; NG; unwmkd; Wove; written on sheet bottom right *Sept 23rd 1938*

Plate 4; 20.5mm; NG; unwmkd; wove, verso Blue Moiré printing written on sheet bottom right *Last impression 5,500 pulls 15/11/38*

Plate 5; 21mm; NG; unwmkd; thin wove verso Blue Moiré printing; left hand sheet side written *8,000(sheets) 12/1/40 A.S.C.*

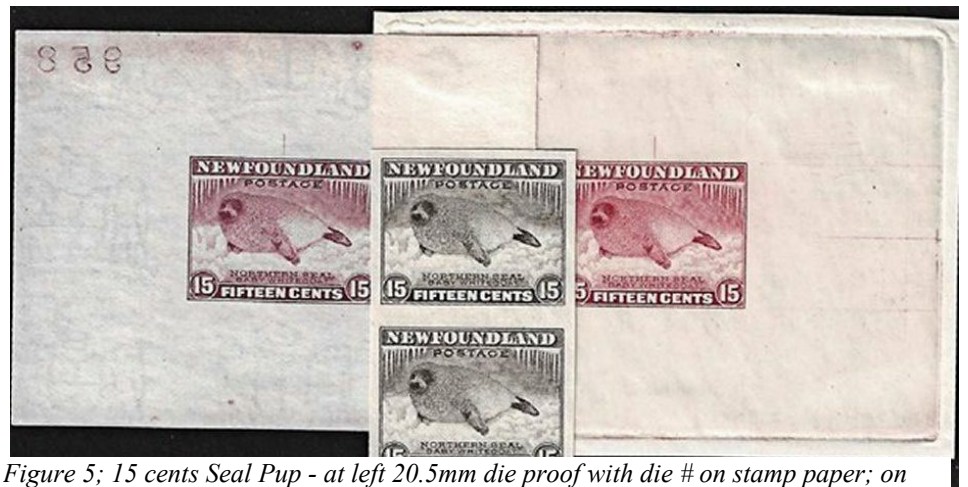


Figure 5; 15 cents Seal Pup - at left 20.5mm die proof with die # on stamp paper; on right 21mm die proof on wove paper. Both compared with imperf black 21mm; NG; unwmkd pair on wove paper.

The selection of NSSC 188 15¢ images above shows the two die sizes 20.5mm and 21mm when compared to an imperforate pair in black.

No attempt has been undertaken to scan all of the items that all listed earlier in this article; just some to show what was being undertaken by Perkins Bacon & Co to produce their stamp orders in a timely and efficient manner.

The wet paper process was most labour intensive and as the dry pregummed paper presses were in use in other countries, Perkins Bacon & Co. had to change, or their business would not get those massive stamp requirement orders and re-orders.

**NEWFOUNDLAND: FURTHER EXCITING DISCOVERY FINDINGS IN
 DESIGN SIZES OF PERKINS BACON & Co 1932 FIRST RESOURCES ISSUES.**

- continued

To close out this study we present several stamps used on cover in the stated time period of Perkins Bacon & Co printing presses from 1932 to May 1941.



14 November 1936 registered cover (shown here back and front). The stamp image size of the 4¢ stamp has been compared by overlaying digital cuts of the 5¢ Caribou in black 21mm, wmkd, gum and 4¢ Prince in black 21mm unwmkd, NG. The 4¢ stamp on the cover is 21mm perf 13.5



13 October 1936 cover franked with 4¢ stamp. The stamp image size has again been compared using the same digital cuts as above, proving the 4¢ stamp on the cover to be size 21mm with perf 13.5

**NEWFOUNDLAND: FURTHER EXCITING DISCOVERY FINDINGS IN
 DESIGN SIZES OF PERKINS BACON & Co 1932 FIRST RESOURCES ISSUES.**

- continued



1 December 1936 cover from Ramea to St John's (only part of cover shown) with enlargement of 4¢ stamp which is 21mm size and perf 13.5 compared to 5¢ Caribou 1942 printing 21mm die I perf 12.5 and 1932 printing 20.5mm design size die I perf 13.5.



17 April 1941 cover from St John's to Ontario showing use of the 5¢ Caribou die II having 21mm design size and perf 13.5. The stamp is compared here to overlays of the following 5¢ Caribou types; from the bottom up; 1942 printing 21mm die I perf 12.5, 1932 printing 20.5mm die I perf 13.5 and 1932 20.5mm die II perf 13.5.

**NEWFOUNDLAND: FURTHER EXCITING DISCOVERY FINDINGS IN
DESIGN SIZES OF PERKINS BACON & Co 1932 FIRST RESOURCES ISSUES.**

- conclusion

With this study, and the previous two, definite proof is provided to confirm that the printing company Perkins Bacon & Co had two types of printing press in use over this studied printing timeline from 1932 to May 1941. One press did wet ungummed paper printing, which would cause any stamp printed item placed on that paper to shrink to a slightly lesser size when the paper was dried for the application of the gum. The other press did pre-gummed dry paper printing where the paper did not shrink and the image remained the same as the applied die size stamp.

Possibly other researchers will find examples of other 1932 issue denominations in the larger 21 mm size featuring the Perkins Bacon & Co designed images.

The authors are informed that a *records book* exists that belongs/ed to the Perkins Bacon & Co printing business. It is our understanding it is 'held' in the library of the Royal Philatelic Society of London. We believe its title has the name: *Engraving Book 1923-1935 (Final)*, Perkins Bacon, 1935. Our understanding of what it could contain would certainly benefit philatelic researchers, of all countries that Perkins Bacon & Co printed for, to have this company's record book scanned and placed into the public domain for all to view. It is definitely outside the realms of copyright as it is a record from a defunct business of how their printing techniques were done. It is not a copyrighted authored book printed for profit.

Because it is a 'held' book, it is unavailable to other philatelic libraries upon request. We have asked. Access is by physical presence either as a guest of a member or by being a member of RPS London. Because of the startling discovery information found in these three articles that is contrary to the information provided by all previous researchers we would ask that this *Engraving Book 1923-1935 (Final)*, Perkins Bacon, 1935 book be made available expeditiously by being scanned and positioned so as to be available to all via online searches.



1938 Sept 14; 2¢ Green; die II; size 21 mm; perf. 13.5 x 13.5; compared to
2) Violet; die II; size 21 mm; imperf.; NSSC 177x 3) Green; die II; size < 20.5 mm; imperf; NSSC 177k
© John M. Walsh, 2023

Otto Bickel, A Stamp Dealer From Germany

by Klaus Wehlt

Otto Bickel was a German stamp dealer responsible for some exotic destinations not only in Newfoundland philately. Otto Bickel was born in Eppingen (grand duchy of Baden) on November 4th, 1862. he died in Munich on July 5, 1946. Around 1890 he opened a stamp shop in Munich.

In 1891 he and his wife, Leonie Berger, moved to San Marino. San Marino is a very small republic west of Rimini on the foothills of the Appennines. San Marino is probably the oldest still existing republic in the world. Otto Bickel was very successful in San Marino, he published his own magazine, the "San Marino Philatelist", and marketed San Marino's stamps and postal stationery worldwide. As a monopolist, he bought the stamps and postal stationery from the postal administration and then sold them to the collectors. He successfully influenced the postal administration to issue new provisional items and postal stationery.

In 1893 he and his wife moved to Cetinje, the capital of the Principality of Montenegro. Here, too, he tried to repeat the strategy that was successful in San Marino. However, his business was far less lucrative in Montenegro, because he was not able to establish a monopoly in the stamp trade in Montenegro.

In 1895 he returned to Munich, the following years are marked by many changes of address. He traveled a lot, especially to the countries in south-eastern Europe but also p.e. to Liechtenstein. His heyday as a stamp dealer was over and things finally fell silent around him in the 1920s although his stamp business continued. He died in 1946 in Munich and it is said as a poor man.

There are some Newfoundland covers to Otto Bickel from the 1890's, both to his Munich addresses and to San Marino and Montenegro. Both destinations would probably not be possible without the Otto Bickel correspondence. In Germany he is also well known for his postal stationery on private order (legal since the 1870's)

Picture 1: A registered cover from St. John's via London to San Marino. 10c Ship stamp, 1887 issue. 5¢ Foreign Letter rate plus 5¢ Registration Fee. Oval "Registered St. John's N.F.L.D. 22 JU 92", engl. transit "Registered London A 30. JUN 92" on the backside an nearly unreadable cancel: "... 2.7.92 5M"



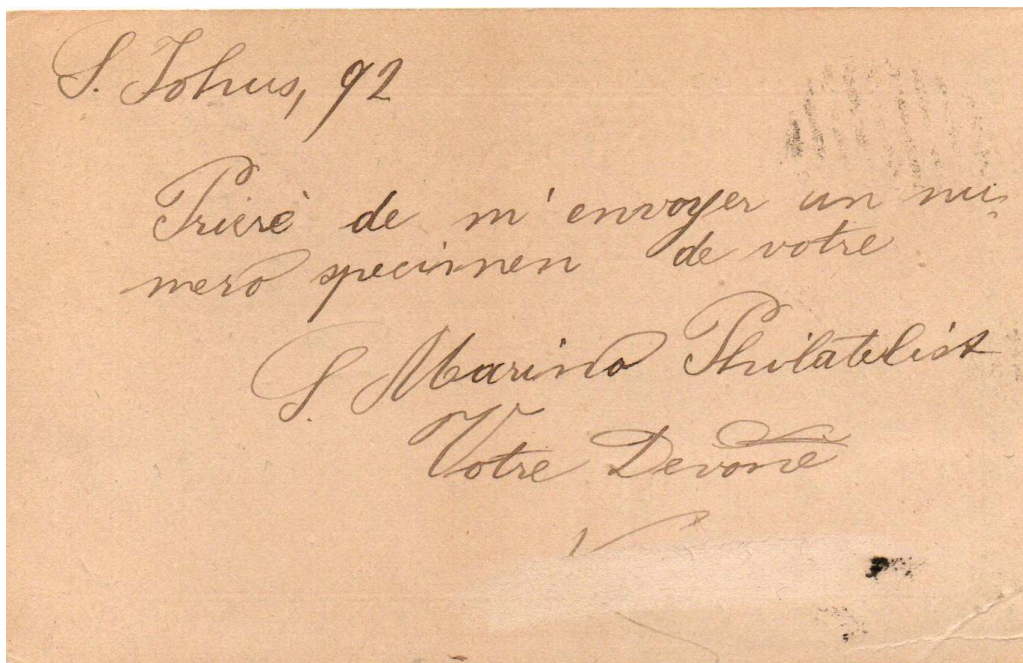
Otto Bickel, A Stamp Dealer From Germany

- continued

Picture 2: A 1¢ postal stationary postcard plus two ½¢ dog stamps, rose red, 2¢ Foreign Postcard rate, from St. John's to San Marino. Circle "St. John's NEWF'D OC 24, 92".



Picture 3: Reverse; the recipient signature has been scratched out.



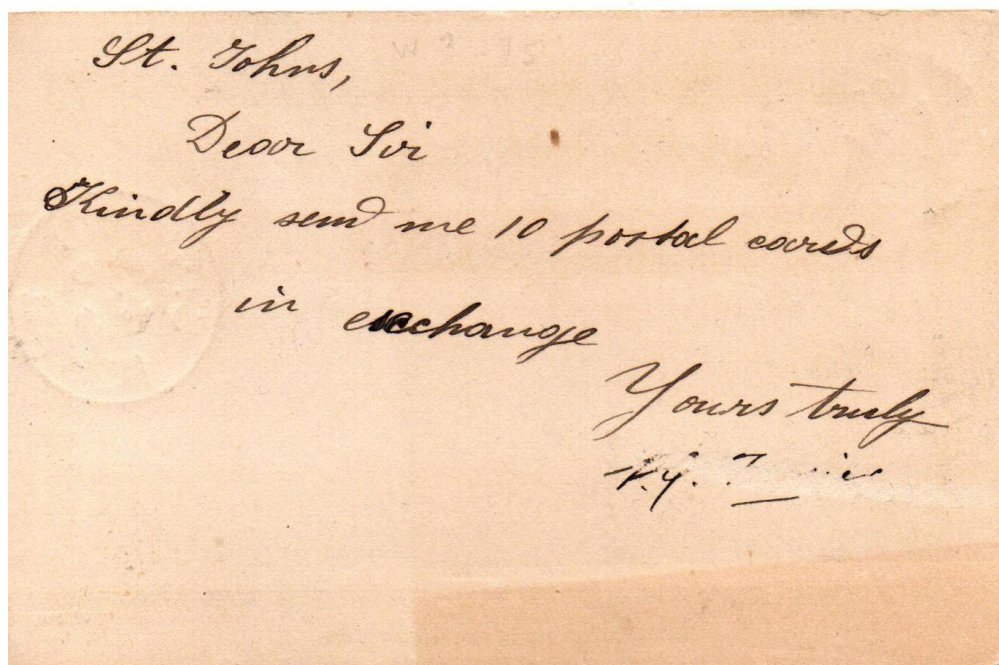
Otto Bickel, A Stamp Dealer From Germany

- continued

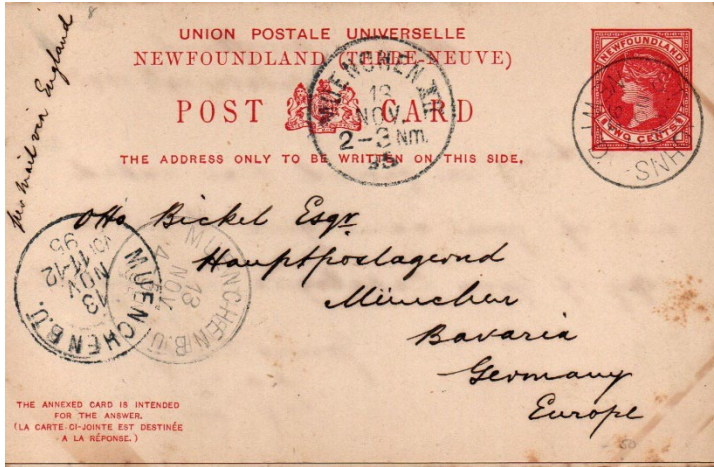
Picture 4: A 1¢ postal stationary postcard plus two ½¢ dog stamps, black, 2¢ Foreign Postcard rate, from St. John's to San Marino. Circle "St. John's NEWF'D" date unreadable. London transit "London GY AP 22, 95"



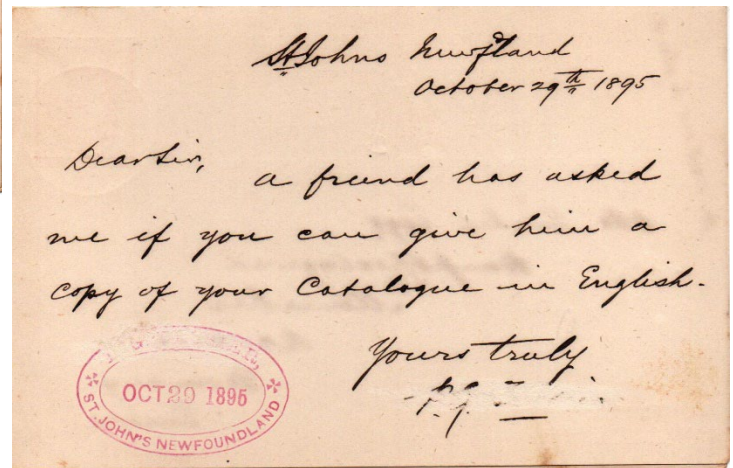
Picture 5: Reverse; the recipient signature has been scratched out, probably T.G. Tessier.



Otto Bickel, A Stamp Dealer From Germany



- conclusion
Picture 6: A 2¢ + 2¢ Reply Card, 2¢ Foreign Postcard rate from St. John's to Munich, Bavaria, poste restante, reply card unused. Circle "St. John's NEWFD NO 2, 95", Transit "München B.U. 13. NOV. 95, Vor. 11-12", Transit "München XII 13. NOV. 95 2-3N", Arrival "München B.U. 13. NOV. 95, 4-5N"



Picture 7: Reverse, the recipient signature has been scratched out, probably T.G. Tessier.



Picture 8: 3 Pf. Bavaria, Postal stationary envelope on private order by Otto Bickel from Nymphenburg to Frankfurt/Main. Nymphenburg, today a part of Munich was until 1899 a small town of Munich. Circle "Nymphenburg 14. AUG, 96, Vor. 11-12"

References:

- Christian Hörter: Er hinterliess Spuren in der Philatelie: Otto Bickel (1862-1946), Philatelie #349 (2006) p. 52-55, Philatelie #350 (2006) p. 51-52
- C. Odzoba: Klssische Philatelie und Postgeschichte - Montenegro, homepage: <https://www.klassische-philatelie.ch/>
- Jakob Arrevad, Ebbe Eldrup: Philatelic cards and covers: Stamp dealer Otto Bickel, Germany, homepage: <https://www.nfvskandinavie.com/artikelen-ijisland.php>