

# THE NEWFIE NEWSLETTER



## NEWSLETTER OF THE NEWFOUNDLAND STUDY GROUP OF BNAPS

Number 139

April/June 2010

### CONTENTS AND NEWS

|            |  |
|------------|--|
| Page 1     | News – <i>Editor</i>   |
| Page 2-4   | Perfin Corner – <i>Barry Senior</i>                              |
| Page 5-6   | 1897 Surcharges – Annotated Exhibit Page 1–<br><i>Editor</i>     |
| Page 7     | Gone But Not Forgotten, Page 30 – <i>Carl Munden</i>             |
| Page 8     | But Who Was Jama? – <i>Gregory Pope</i>                          |
| Page 9     | Scott #136 Re-entry – <i>Jean-Claude Vasseur</i>                 |
| Page 10-11 | A Rare Bit of Philatelic History – <i>Editor</i>                 |
| Page 12    | GPO Pricelist from 1933 – <i>Editor</i>                          |
| Page 13    | Update on Roessler's 1937 "Balloon Mail" –<br><i>Pete Motson</i> |
| Page 14    | Newfoundland's Most Expensive Cover – <i>Editor</i>              |
| Page 15    | Unforeseen Air Mail Voyage – <i>J-C Vasseur</i>                  |
| Page 16    | GPO Pricelist from 1947 – <i>Editor</i>                          |



### ARTICLES

Please submit some articles and/or photos for future issues.

### RAILROAD TICKET

From Peter McCarthy:

I was interested in the perfin Corner and could have some answers on the question [NN #135, Page 8]. The ticket was sold at St. John's and limited, therefore the **L** punch. It looks like it was a third class ticket, per the punch under the **L**. These would have been punched by the ticket agent in St. John's. The bottom of the ticket was handled by two conductors. The single punch that takes out the **e** in the was made by the first conductor who honoured the ticket. The one who took over at the change-off point cancelled that portion with a double punch. The purser on the steamer cancelled the P.A.B. to North Sydney portion with the double punch on collection. The **L** on the stamp [not pictured here] could have been punched by any of the Newfoundland station agents – possibly in error. If used on cover the stamp would have had to be placed upside down or sideways.



### 2009 ROBERT PRATT AWARD FROM COLLECTORS CLUB OF CHICAGO

We just learned that Peter Motson won the \$1,000 award for his BNAPS Exhibit Book NO. 54, *Newfoundland Airmail Stamps and Air Mail Flights: 1918-1949*. Congratulations, Pete!!

Chairman/Editor: Norris (Bob) Dyer, 1708 Granada Court, Petaluma, CA 94954 [nrdyer@comcast.net](mailto:nrdyer@comcast.net)

Treasurer/Circulation: Martin Goebel, 13 O'Mara Place, St. John's NL A1A 5B7 [goebel@nf.sympatico.ca](mailto:goebel@nf.sympatico.ca)

## **The perfin corner by Barry Senior**

### **A Tale of Three Covers**

Although Ayre & Sons Limited started using perfins around 1923 some issues are more common than others. Such is the case with stamps and covers from the 1928 and 1929 Publicity issues. The 4 cent Prince of Wales, Scott #s 148 and 166 were not known on cover with either of the Ayre perfins, that is until very recently. In August a scan through Ebay showed an Ayre cover with one of the 4 cent stamps seen in Fig. 1. The scan quality wasn't great but the date of June 8, 1929 meant it had to be # 148 so I entered a bid and won the lot. The cover arrived and I gave it a quick glance before putting it into the A9 section of my collection.



Figure 1.



Close up of stamp on cover #1.      *Continued next page*

**THE NEWFIE NEWSLETTER**  
**OF THE NEWFOUNDLAND STUDY GROUP OF BNAPS**

**Number 139**

**April/June 2010**

**A Tale of Three Covers – Continued**

Shortly thereafter a similar cover appeared on Ebay from Ayre & Sons to the same company in Ohio. This one had the 4 cent stamp as well and the scan was clear enough to show that it was the A9 pattern with a date of Nov 19, 1929, Fig.2. Since the 4 cent stamp of the re-engraved and unwatermarked Publicity series was issued on August 26, 1929 this cover could potentially contain stamp #166. Again the scan was not clear enough to tell so I decided to take a chance and bid anyway. If it was #148 it could be resold or traded and if it was #166 then it would be a nice addition. I compared it to the first cover already received by this time and was pleasantly surprised to see that the first cover was actually the A8 pattern instead of the A9 as I originally thought. Great surprise!!

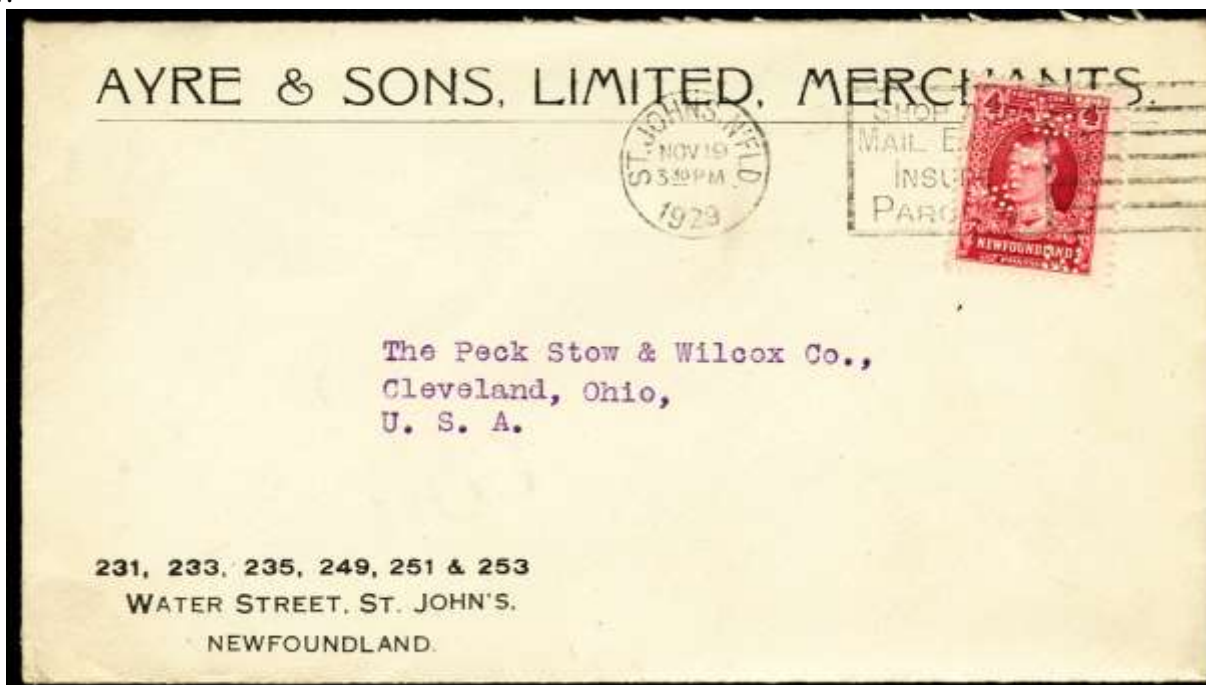


Figure 2.



Close up of stamp on Figure 2.      *Concluded next page*



**THE NEWFIE NEWSLETTER**  
**OF THE NEWFOUNDLAND STUDY GROUP OF BNAPS**

**Number 139**

**April/June 2010**

**A Tale of Three Covers – Concluded**

In the meantime a third 4 cent cover showed up on Ebay, this one was dated Aug. 3, 1929, and proved to have an A9 perfin, Fig.3. The second and third covers were duly bid and won and showed up a short time later. Needless to say I was extremely happy to find that the second cover was indeed franked with a # 166 with the A9 perfin.

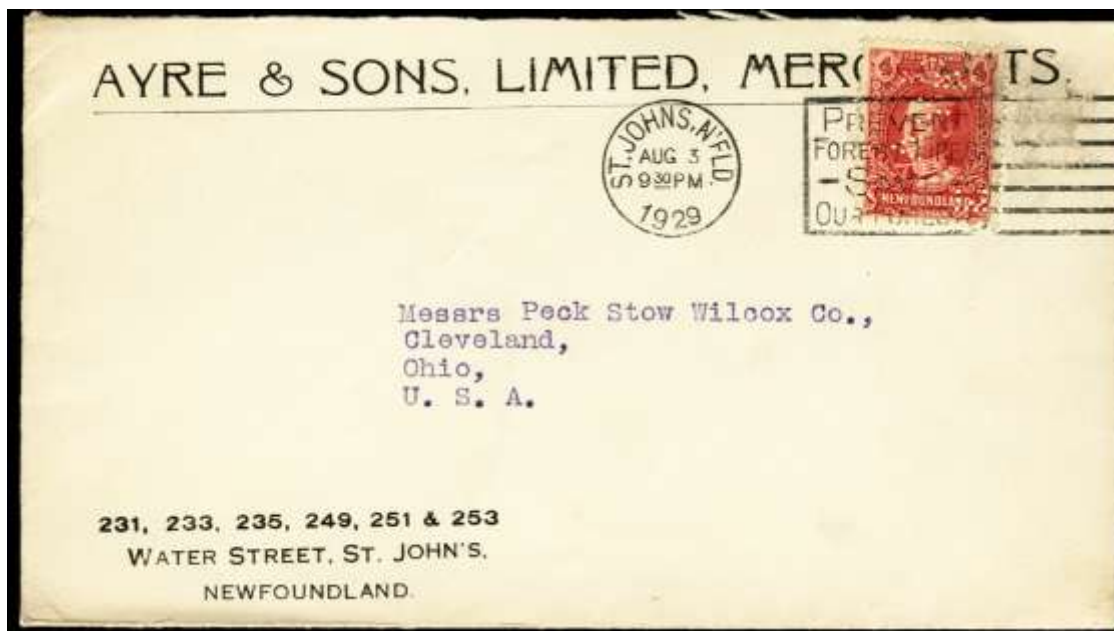


Figure 3.



Close up of stamp on cover #3.

In the space of 3 short weeks I went from not having an Ayre cover with either #148 or #166 to having three different covers added to my collection. Two interesting thing is that they were all to the same business in the USA but also that all three came to me from three different sellers in the UK. It sure feels like Christmas to me!

**-- Barry Senior**

*THE NEWFIE NEWSLETTER*  
*OF THE NEWFOUNDLAND STUDY GROUP OF BNAPS*

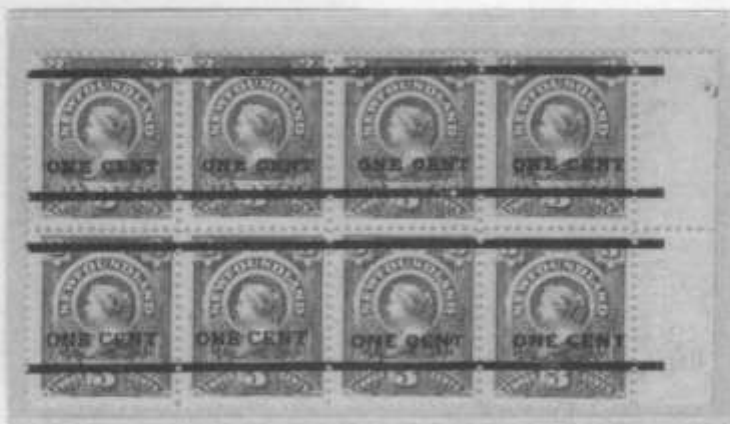
*Number 139*

*April/June 2010*

**NEWFOUNDLAND'S 1897 POSTAL SHORTAGE- ANNOTATED**

**Norris (Bob) Dyer (The Editor)**

**NEWFOUNDLAND'S 1897 POSTAL SHORTAGE**



*The three major 1897 provisional surcharges; top four are Type I, the two at lower left are Type II, and the two at lower right Type III*

**"The very gravest inconvenience has been inflicted upon the public by the P.O. being out of the commonest of stamps. There is the worst kind of blundering evidenced in this..."**

*St. John's Evening Herald, September 30, 1897*

Newfoundland's 1897 Cabot set was inspired by the Columbian and Diamond Jubilee issues, but only the low values sold well. 400,000 1¢ stamps were printed in June, 1897 but high usage and speculation led to their shortage by September. The 1¢ was used mostly for local letters, circulars, and third class mail. With the plates destroyed and no other 1¢ stamps available, a crisis occurred. This exhibit is the story of that crisis and how the P.O. dealt with it. It contains examples of make-do measures, as well as the surcharged provisionals finally produced, and their use. The postal shortage continued until December 4, 1897 when a new 1¢ Queen Victoria issue finally became available in St. John's.

Rare items include a red trial surcharge sheet (three known), a vertical pair with and without the ONE CENT surcharge (five known), and the only known usage of the Type III surcharge on a first class letter to the United States during the provisional period.

Apologies! This is a **scan of a 2004 Xerox** of the title page for my single frame exhibit – the original Word document (but not the block!) has been lost. The subsequent scans will be in color and of the actual exhibit pages.

**THE NEWFIE NEWSLETTER**  
**OF THE NEWFOUNDLAND STUDY GROUP OF BNAPS**

**Number 139**

**April/June 2010**

**NOTES ON 1897 SURCHARGE EXHIBIT – PAGE 1.**

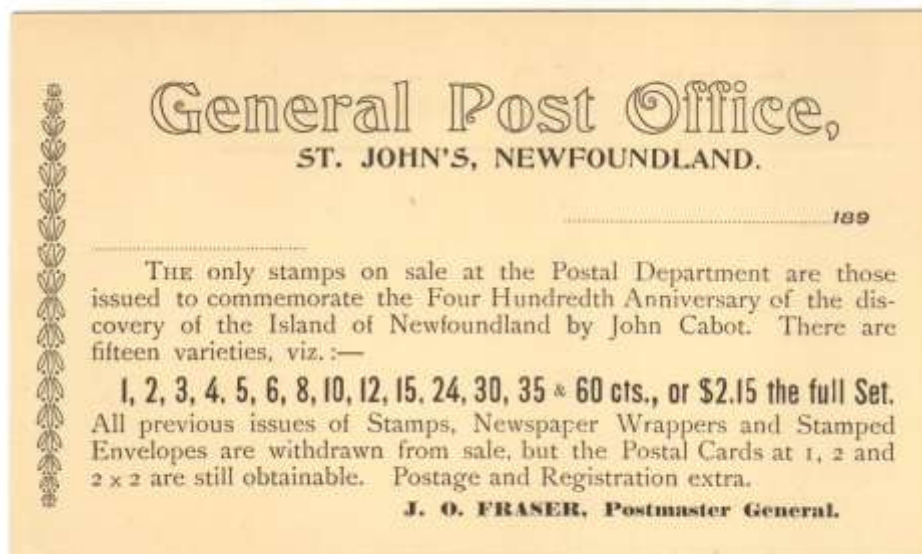
*This is the first in a series of 18 two-page articles. It is a new concept, I believe. I will tell you the story behind the exhibit pages, present historical and philatelic notes, provide additional research and provenance, describe items still sought, list references, and whatever else comes to mind.*

The 1897 postal shortage is presently the first 17 pages (not counting the title page) of my five-frame exhibit, *Postal Shortages, and Surcharged Issues of Newfoundland*, last shown at Washington 2006, where it received a Gold. The 1897 shortage was first exhibited as a *single frame* nationally in 1997 when it received a Silver at the American Expo in San Diego. It rose to a Platinum by 2001 at the APS AmeriStamp show in Chicago. The pages on the 1897 shortages have varied in number from 15-21 (again, not counting the title page). My expanded six-frame surcharge exhibit can be found as **BNAPS Exhibit Series: NO. 19**. A number of the pages have subsequently been changed.



Robert Bond of the Liberal Party became Colonial Secretary in 1895, after the bank crash of 1894, and J.O. Fraser, Postmaster General (since 1885) reported to him. With dreams of great profits, he ordered the fourteen-value John Cabot set to be issued in June, 1897. The American Bank Note Company printed them, in great secrecy. The 1¢ green Queen Victoria stamp represented the lowest value in the set. The 60¢ high value was of the King Henry VII. The 1¢ also honored the queen in her jubilee year. \*

The bank note company certified on June 23, that they had destroyed the plates for the set. Upon the Cabots' release, collectors were informed by Fraser (below) that previous stamps were no longer available. This was intended to sell a lot of Cabot stamps but best plans can go for naught.



\* Robert H. Pratt, *Newfoundland – The Gray 1890 Three Cent – Ten Years of Turmoil*, Page 51, Fifty-Second American Philatelic Congress, 1986, 40-2870



**THE NEWFIE NEWSLETTER  
OF THE NEWFOUNDLAND STUDY GROUP OF BNAPS**

**Number 139**

**April/June 2010**

Page 30

**GONE BUT NOT FORGOTTEN – CARL MUNDEN**

**TIBBOS HILL**

Open June 1, 1951. Closed June 6, 1970. Population 140.



**BRUNETTE**

Open as a way office in 1882. Became a post office in 1891. Closed Dec. 16, 1957. Population 78.



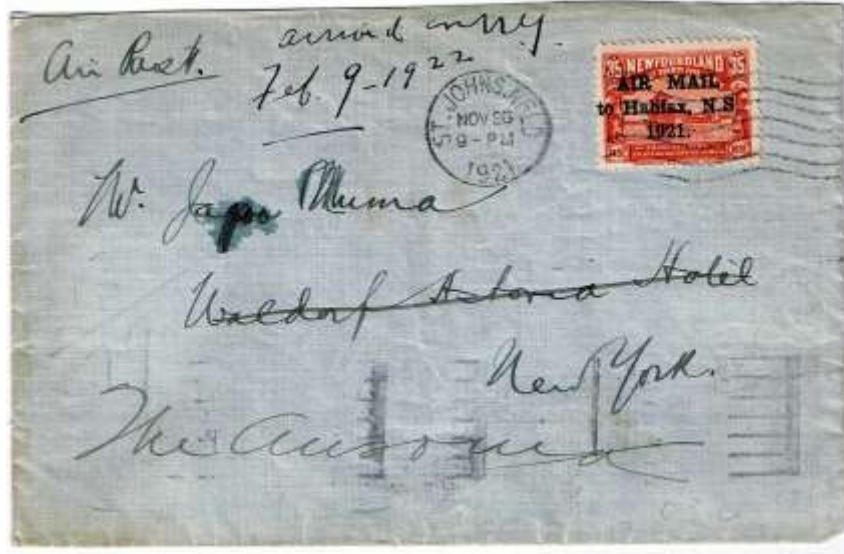
**THE NEWFIE NEWSLETTER**  
**OF THE NEWFOUNDLAND STUDY GROUP OF BNAPS**

**Number 139**

**April/June 2010**

**BUT WHO WAS JAMA? - Submitted by Gregory Pope**

Nice C2b Halifax cover – not unusual by itself – but few have surviving enclosures from the honorable [?] Richard Squires.

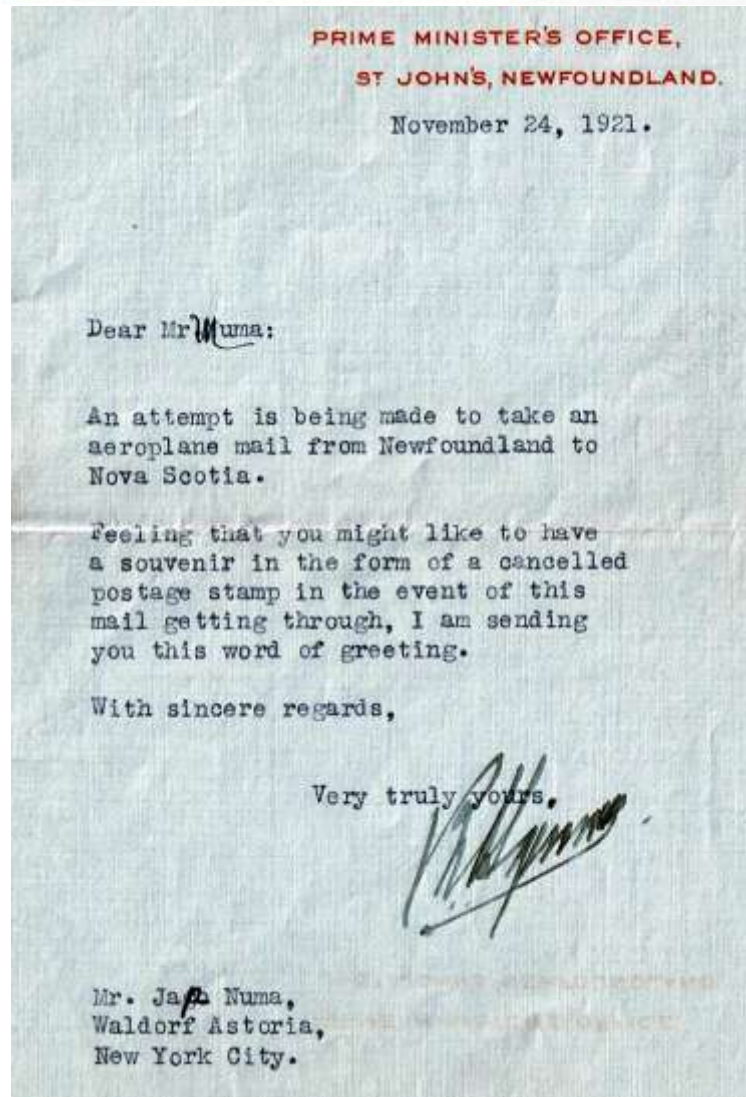


But who was “Mr. Muma” and why did he warrant such attention?

His name gave Squires’ secretary fits!

Did it end up Japa Muma?

Any clues???





**THE NEWFIE NEWSLETTER**  
**OF THE NEWFOUNDLAND STUDY GROUP OF BNAPS**

**Number 139**

**April/June 2010**

**SCOTT #136 RE-ENTRY – Jean-Claude Vasseur**

Sc #136 (NSSC 131) 6c slate 'Upper Steadies' is known to include a large number of minor re-entries, especially in 'NEWFOUNDLAND', which are not referenced in catalogues. Meanwhile, I have found the attached Significant/Major (?) re-entry on a block of 25 surcharged THREE CENTS (Sc #160). Thus it is either position 31, 36, 81 or 86. Is somebody able to find the exact position of this re-entry? Please respond to Editor.



Re-entry:  
Left margin and pillar  
Lower part of the ornament at left and right  
in NEWFOUNDLAND

---

**INQUIRY FROM CARL MUNDEN**

Years ago there was a list of postmarks and year dates recorded. The late Palmer Moffat compiled this and it was in early issues of the NEWFIE NEWSLETTER. I would like scans of some of these markings which are on stamp or piece. Of the 1150 or so post offices, I have about 850, including illustrations from proof books. I would appreciate if readers would check their holdings for post offices I am missing. For a list of the elusive markings, contact me at:

[carl.munden@ns.sympatico.ca](mailto:carl.munden@ns.sympatico.ca) or write to me at:

Apt. 227, 27 Brookdale Cresc., Dartmouth NS B3A 4N5, Canada.

**THE NEWFIE NEWSLETTER**  
**OF THE NEWFOUNDLAND STUDY GROUP OF BNAPS**

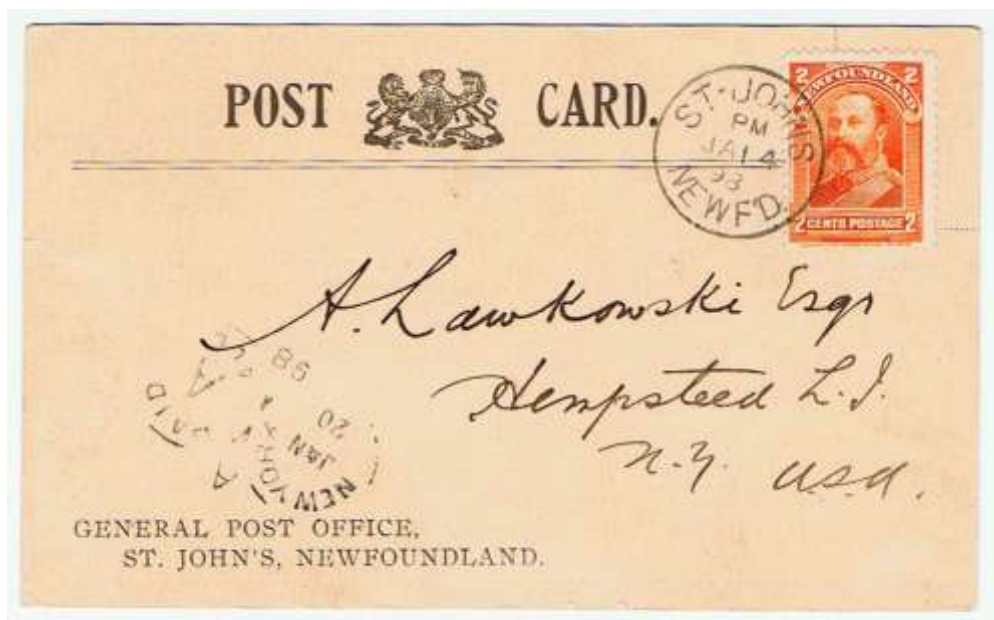
**Number 139**

**April/June 2010**

**A RARE BIT OF PHILATELIC HISTORY – The Editor**  
**FROM THE COLLECTION OF THE LATE JOHN BUTT**

Rob Moore, who purchased much of the marvelous Newfoundland collection of John Butt, recently sent me this great, and very rare, card. Another collector had made him aware of my BNATopics article *Newfoundland's GPO Post Cards*, from April-June, 2005. Briefly, between 1895-1898, Post Master General, J.O. Fraser, had these cards made to attract philatelists. He acted as a one-man philatelic clerk at the G.P.O. The three cards are different. Type 1 (1895-1897) listed for sale pre-Cabot issues. Type 2 (1897) listed *only* Cabot stamps, and Type 3 (early 1898) listed pre-Cabot, Cabot **and** the new 1¢ red Victoria and 2¢ Orange Edward. More about this on the next page....

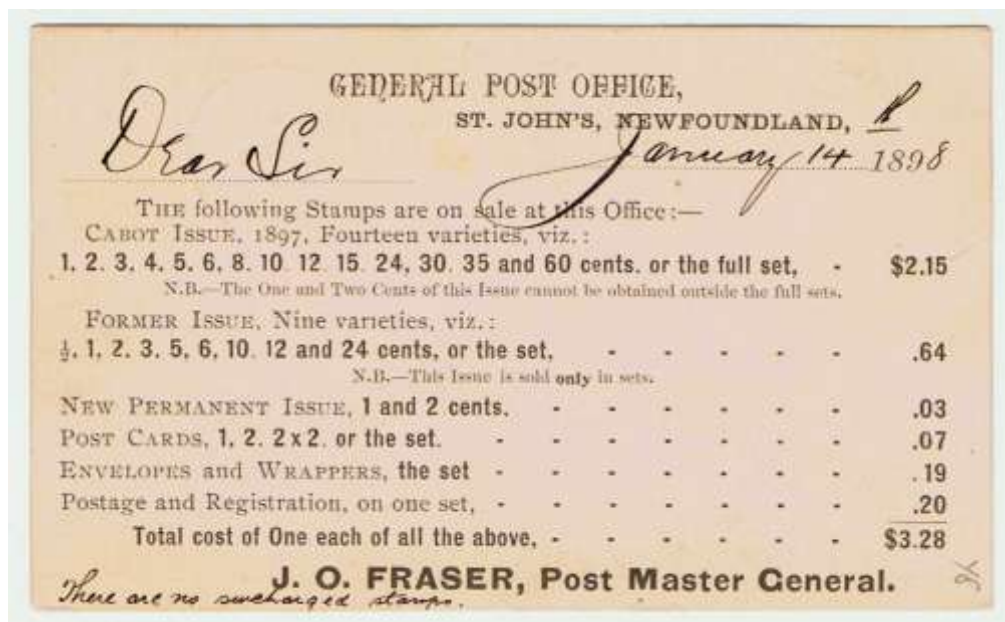
Card was sent on JA 14 98.  
Font for POST CARD is Roman, with small serifs. Note that card design, upper right, calls for a vertical stamp, such as the 2¢ Edward, as most cards were sent out of country.



Card lists the full Cabot set – so it appears that some of the obsolete 1¢ and 2¢ values had been reserved to ensure complete sets were available to philatelists. Older issues, withdrawn because of the Cabot issue, were made available again.

The written message is in Fraser's hand. The popular surcharged stamps were long gone by January 14<sup>th</sup>.

*Concluded Next Page*



## **A RARE BIT OF PHILATELIC HISTORY – concluded**

### **G.P.O. POSTCARDS, 1895-98 USAGE DATES**

#### **TYPE 1 – USAGE DATES**

1895 – May 5, June 6, July 15, Aug 24 (unaddressed), December 16;

1896 – April 1, April 28, May 25 (unaddressed), August 11; and

1897 - May 7.

#### **TYPE 2 – USAGE DATES**

1897: July 10, July 12, July 27, August 2, August 6, September 11, September 13, September 14, October 2, October 25, October 29, November 1 (unaddressed).

#### **TYPE 3 – USAGE DATES**

1898 – January 14, February 5

Note, only two of the Type 3 are recorded used, and the January 14<sup>th</sup> one is undoubtedly the one shown on the previous page. Those of you who read my article know the reason why. Colonial Secretary J. Alex Robinson sent a blistering letter to Fraser in February, 1898. It read:

Sir:

An advertising card, apparently issued under your direction, has come to my notice. I beg to remind you that the sale of stamps for other than postal purposes is not the province of, but only incidental to, your department, and the Government are not ambitious to place themselves in rivalry with stamp dealers. Already the reputation of the Colony is suffering from speculation in stamps and silver, and the inevitable results are being experienced. I have to request that you will immediately withdraw these cards from circulation, and for the credit of the Colony, I can only hope they have not already received a circulation abroad [whoops!].

Pardon me for reminding you that the Post Office was established for the convenience of the people, and not as a stamp speculating concern, nor as an emporium for the sale of pictures.

Chastened, Fraser withdrew the cards, and this is why Type 3 is so rare. He continued to service philatelic requests, however.

*The Editor*



**THE NEWFIE NEWSLETTER**  
**OF THE NEWFOUNDLAND STUDY GROUP OF BNAPS**

**Number 139**

**April/June 2010**

**GPO PRICELIST FROM 1933 INSIDE INTERESTING COVER – Editor**



**COVER** - This cover is from **FEB 2 1933**. I have a GPO cover from **JAN 21 1933** which has the 15¢ seal. The one above suggests that the GPO ran out of the seal somewhere *between* the two dates. The overprinted 15¢ L. & S. Post was issued on February 9, 1933.

**ITEMS FOR SALE** - The 66¢ sale was for definitives from the 1932 Resources Issue. Earlier stamps listed were the 28¢ value of the 1928 Publicity Value, which catalogues more now than any of the other 14 values in the set, **and the 60¢ Cabot**, still around after 36 years! Robson Lowe says the stock was finally depleted in 1936. Curiously, only three of the six 1931 air mails were available.

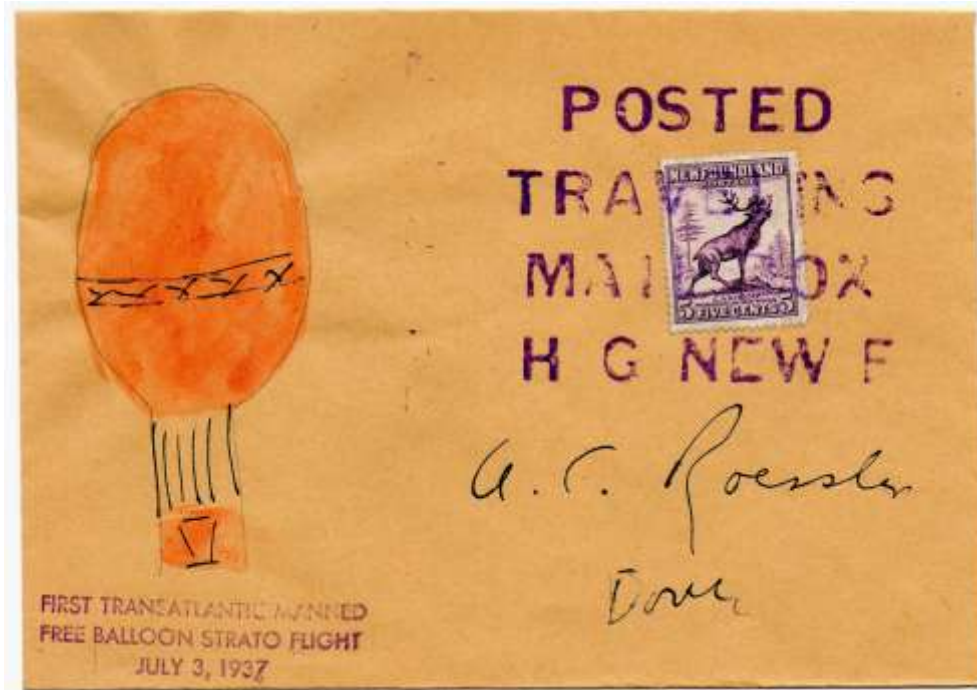
| NEWFOUNDLAND  |                                  |  |                |
|---|----------------------------------|--|----------------|
| DATE.....   |                                  | 193  |                |
| REQUISITION FOR POSTAGE AND AIR MAIL STAMPS<br>(For Use of Dealers and Collectors Only) |                                  |  |                |
|   |                                  |  | Signature..... |
| (Please print name clearly)   |                                  |  |                |
| Required  | Stamps in Issue<br>At Above Date | Colour and Date<br>of Issue                      | Value<br>\$ c. |
| <b>GENERAL</b>  |                                  |  |                |
| ✓ 1   | One Cent                         | Green—1932                                       | 1              |
| ✓ 1   | " "                              | Grey—1932  | 1              |
| ✓ 1   | Two Cent                         | Rose—1932  | 2              |
| ✓ 1   | " "                              | Green—1932                                       | 2              |
| ✓ 1   | Three Cent                       | Orange-Brown—1932                                | 4              |
| ✓ 1   | Four Cent                        | Rose—1932  | 5              |
| ✓ 1   | Five Cent                        | Light Purple—1932                                | 7              |
| ✓ 1   | Seven Cent                       | Prune—1932                                       | 8              |
| ✓ 1   | Eight Cent                       | Lt. Brick Red—1932                               |                |
| ✓ 1   | Ten Cent                         | Dark Grey—1932                                   |                |
| ✓ 1   | Fourteen Cent                    | Red Brown—1928.<br>(On Unwatermarked<br>Paper)   |                |
| ✓ 1   | " "                              | Black—1932                                       | 14             |
| ✓ 1   | Fifteen Cent                     | Lilac Rose—1932                                  |                |
| ✓ 1   | Twenty Cent                      | Sea Green—1932                                   | 24             |
| ✓ 1   | Twenty-Four Cent                 | Opal—1932  |                |
| ✓ 1   | Twenty-Five Cent                 | Slate—1932                                       |                |
| ✓ 1   | Twenty-Eight Cent                | Slate Green—1928.<br>(On Unwatermarked<br>Paper) |                |
| ✓ 1   | Thirty Cent                      | Ultra-Marine—1932                                |                |
| ✓ 1   | Sixty Cent                       | Black—1897.<br>(On Unwatermarked<br>Paper)       |                |
| <b>Containing</b>   |                                  |  |                |
| Booklets  | One Cent (4)...                  | Green—1932                                       |                |
|   | Two Cent (12)                    | Rose—1932  |                |
|   | Three Cent (4)                   | Orange-Brown—1932                                |                |
| <b>AIR MAILS</b>  |                                  |  |                |
|   | Fifteen Cent                     | Brown—1931                                       |                |
|   | Fifty Cent                       | Green—1931.<br>(On Unwatermarked<br>Paper)       |                |
|   | " "                              | Green—1931.<br>(On Watermarked<br>Paper)         |                |
| Total.....  |                                  |  | 66¢            |

At 40c. per Booklet

NOTE:—For Foreign Orders—Remit by Postal Money Order payable to Postal Department, St. John's, Newfoundland, (cheques and coin not acceptable). Drafts in substantial amounts acceptable when drawn on Bank operating at St. John's, Newfoundland. Postage to United Kingdom, Canada, and U.S.A., 5c. per oz. Registration extra 10c. To South American and European Countries, 7c. per oz. Registration extra 10c.

## **UPDATE ON ROESSLER'S 1937 "BALLOON" MAIL – Pete Motson**

*We showed a different version of this cover in NN #134. Subsequently, Pete contacted Chris Hargreaves and others on this fantasy and came up with additional information - The Editor.*



I acquired a similar cover to his in July this year (as Att'd scan), with a slight difference as follows:

- J-C's [Vasseur] cover has the text "FIRST TRANSATLANTIC" etc.(UL) written in manuscript, compared to the Att'd example bearing similar text in a handstamp. (LL)

The reverse of the Att'd cover bears the pencil manuscript text : "FLIGHT SCRUBBED CAPT MCLEAN".

The Editor of the Air Mail News kindly directed my enquiry to Chris Hargreaves and also the Section Editor of the Balloon Section of the "Air Mails of Canada and Newfoundland", Nino Chiovelli. The following extracts, [summarized below](#), are based on various comprehensive and quality researches:

- No reports have been found of any such event in Canadian or USA Air Mail literature or newspapers, including several books regarding Roessler's covers.
- However, the Att'd cover is addressed to "Dover" and there is such a place 15 miles west of Roessler's location in East Orange, New Jersey. It is logical to assume that such a location was more than convenient to this well known US "entrepreneur".
- At least two aviators by the name of McLean were known at that time: F K McLean who was a British citizen and also a Capt. McLean who was one of the original officers when the USAAF Weather Service was formed in 1937.
- Without clarification to the contrary, any such Newfoundland balloon covers should therefore be treated with suspicion.

**THE NEWFIE NEWSLETTER**  
**OF THE NEWFOUNDLAND STUDY GROUP OF BNAPS**

**Number 139**

**April/June 2010**

**NEWFOUNDLAND'S MOST EXPENSIVE COVER**

The following is cut-and-pasted from the November 18, 2009 auction of Spinks. \$140,000 plus commission, bringing it to \$159,100, per my calculation.



**1857 2p Scarlet vermilion**, a spectacular horizontal strip of three, with margins ranging from close but clear at top to mostly large margins elsewhere, stunning color and impression, tied to a small 1859 cover from St. John's to Devon, England, the strip is lightly cancelled by barred oval cancels and beautifully tied by "Galway/DE 22 59" transit c.d.s. at left, light originating "St. John's/DE 13 59" c.d.s. just below strip, manuscript endorsement "per Circassian/via Galway" at top left, Dublin (Dec. 23) and London (Dec. 24) transit c.d.s. on reverse, very fine; a cover of breathtaking eye appeal and rarity. *This cover, bearing the famous and unique strip, is widely considered to be the most outstanding Newfoundland cover in existence. In addition, many seasoned philatelists rank this cover among the greatest classic covers in all of philately. It combines both beauty and rarity in a way that can be fully appreciated by all collectors at any level. Several of the most famous collectors of Newfoundland in history have once owned this extraordinary cover, including Caspary (1956), Stout (1963), Amundsen (1967), Hart (1977) "Foxbridge" (1987) and Chan (1995). When this cover made its auction appearance in the 1956 Caspary sale it is fascinating to note it realized an impressive \$12,500.00, among the highest realizations of all of the fabulous rarities found in this legendary collection. By comparison, the unique Two Cent Hawaiian Missionary on cover realized \$25,000.00 in the Caspary sale and when it was last sold at auction in 1995 it realized \$2,090,000.00 (including premium). One of the highlights of the Gross British North America collection whose sales proceeds will benefit the Smithsonian's National Postal Museum.* [\(Image\)](#)

Est. \$200,000-300,000

SOLD for \$140,000.00  
Will close during Public  
Auction



**THE NEWFIE NEWSLETTER**  
**OF THE NEWFOUNDLAND STUDY GROUP OF BNAPS**

**Number 139**

**April/June 2010**

**UNFORSEEN AIR MAIL VOYAGE?**

**Jean-Claude Vasseur**

This cover was dispatched at St John's GPO on Saturday January 3<sup>rd</sup> 1931 (2<sup>nd</sup> day of the 1<sup>st</sup> Air Mail Issue) franked 50 cts, the rate for air mail parcels up to 2 lbs. This fantasy franking denoted an obvious sender's desire to see this cover fly on the White Bay Flight before reaching its destination in British Columbia. The standard rate for this destination was 4cts or 9cts (air mail!). Meanwhile something was missing on the cover - a destination on the White Bay Tour! Thus, at the Post Office, the clerk, following instructions, sent the cover straight away to British Columbia.

Sent by train, it arrived January 7<sup>th</sup> - 4 days later - in Moncton (N.B.). There, the Postmaster, likely puzzled by this high franking, decided that the cover deserved to be registered (!) - see registration mark on front - and air mailed!

Seeking a connection from Montreal, the cover was flown there and received the same day at Montreal's St. Hubert Airport where it missed the flight to British Columbia - see the hand stamp on front -. Bad luck! Apparently no further flight being expected soon, the cover was resent (air mail!) to New-York where it arrived the next day (January 8<sup>th</sup>). From there the cover went across the United States to San Francisco by the Transcontinental Airmail recently opened, and arrived in Portland Oregon two days later, January 10<sup>th</sup>, before arriving at its intended destination on the 11<sup>th</sup>.

Here, in red are the legs flown.

Note: The boxed violet "Air Mail" was private and may have been added later.



**THE NEWFIE NEWSLETTER**  
**OF THE NEWFOUNDLAND STUDY GROUP OF BNAPS**

**Number 139**

**April/June 2010**

**ANOTHER GPO PRICELIST - THIS ONE FROM 1947 - Editor**

On Page 12, I showed a price list from 1933. This one from September, 1947 may have been the last one issued. It shows issues from the 1940's, except Grenfell and the 1946 surcharge, sold out because of speculation.

Only the 1949 varieties of the postage dues would issue after this list came out.

10M 9-47. Dicks
Form 1433

**LIST OF MINT NEWFOUNDLAND POSTAGE STAMPS, ETC.**

For Use by Department only

No. \_\_\_\_\_

Selected \_\_\_\_\_

Checked \_\_\_\_\_

Date \_\_\_\_\_

AVAILABLE FROM

**THE POSTAGE STAMP DIVISION**

**Department of Posts and Telegraphs**

**St. John's, Newfoundland**

Name and Address of Sender

\_\_\_\_\_

\_\_\_\_\_

\_\_\_\_\_

Amount enclosed \$ \_\_\_\_\_

Please use this as an Order Form. A new form to replace it, will be sent with items ordered.

|  | Catalogue No.<br><small>Scott's</small> | ITEMS                  | Number and Description of Items Required<br><small>(i.e. singles, pairs, blocks, etc.)</small> | Total Number Required | Total Cost |  |
|--|---|------------------------|--|-----------------------|------------|--|
| <b>POSTAGE STAMPS<br/>1941-1944</b>    | 1946                                    |                        |  |                       |            |  |
|  | 258                                     | 1c. Gray               |  |                       |            |  |
|  | 259                                     | 2c. Green              |  |                       |            |  |
|  | 264                                     | 5c. Rose Carmine       |  |                       |            |  |
|  | 265                                     | 4c. Blue               |  |                       |            |  |
|  | 269                                     | 6c. Violet             |  |                       |            |  |
|  | 266                                     | 7c. Violet Blue        |  |                       |            |  |
|  | 260                                     | 8c. Red                |  |                       |            |  |
|  | 261                                     | 10c. Brownish Black    |  |                       |            |  |
|  | 262                                     | 14c. Black             |  |                       |            |  |
|  | 263                                     | 15c. Pale Rose Violet  |  |                       |            |  |
|  | 264                                     | 20c. Green             |  |                       |            |  |
|  | 266                                     | 24c. Deep Blue         |  |                       |            |  |
|  | 266                                     | 25c. Gray              |  |                       |            |  |
|  | 267                                     | 30c. Carmine           |  |                       |            |  |
|  | 267                                     | 48c. Red Brown         |  |                       |            |  |
|  |   |                        | Complete Sets 1c. to 48c   |                       |            |  |
|  |   | 253-267<br>Inclusive   | Singles — \$2.25   |                       |            |  |
|  |   |                        | Pairs — \$4.46   |                       |            |  |
|  |   |                        | Blocks — \$8.92  |                       |            |  |
| <b>Princess Elizabeth<br/>1947</b>     |   | 4c. Blue               |  |                       |            |  |
| <b>Commemorative<br/>1947</b>          |   | 5c. Violet             |  |                       |            |  |
| <b>Air Mail<br/>1943</b>               | C. 19                                   | 7c. Bright Ultramarine |  |                       |            |  |
| <b>Postage Due<br/>Stamps<br/>1939</b> | J 1                                     | 1c. Green              |  |                       |            |  |
|  | J 2                                     | 2c. Vermillion         |  |                       |            |  |
|  | J 3                                     | 3c. Ultramarine        |  |                       |            |  |
|  | J 4                                     | 4c. Orange             |  |                       |            |  |
|  | J 5                                     | 5c. Pale Brown         |  |                       |            |  |
|  | J 6                                     | 10c. Dark Violet       |  |                       |            |  |
|  |   |                        | Amount for Postage   |                       |            |  |
|  |   |                        | " for Registration   |                       |            |  |
|  |   |                        | <b>TOTAL</b>   |                       |            |  |