

THE NEWFIE NEWSLETTER
OF THE NEWFOUNDLAND STUDY GROUP OF BNAPS

Number 133

November/December 2008

EDITOR'S COMMENTS

THIS ISSUE

- Page 2** **Interesting Look at Surcharged Stamp On Post Card**
Page 3 **Gone But Not Forgotten, Page 24 – Carl Munden**
Page 4 **The Perfin Corner –Barry Senior**
Page 5-6 **Newfoundland Slogan Cancels Part IX – George McGowan**
Page 7 **BNAPEX 2008 Workshop and Exhibits - Editor**
Page 8-9 **Unusual WWII Military Label – Editor/Ron McGuire**
Page 10 **New Postmark for 1919 “Bluenose” Flight? – Colin Bulloch**



BNAPEX 2008 INFORMATION FROM BOARD MEETING

As a Board member, I am able to provide a few numbers that may be of interest to you about our society, from our meeting in Halifax. As of August, the organization had 1210 members, compared with 1218, a year earlier. 743 members are from Canada, 384 from the U.S. and 83 from other countries. The budget for 2009 is \$104,490, which will amount to a projected deficit of \$16,790, which will be drawn from the Horace Harrison bequest. Seed money was approved to examine digitizing hundreds of 35mm color slides of Robert Pratt that are housed with the Collectors Club of Chicago. C. A. Stillions will be working on this project. The result could be a number of programs made available to members. Research must be done first with samples taken to see if the 20 year-old slides can be processed into high enough quality digital images.

See Page 7 for a report on our workshop and list of Newfoundland exhibit awards.

THE PERFIN “L” AND “P” PUNCHES

On Page 9 of #132, Barry Senior showed several stamps with unidentified punch cancellations, and asked for comments. Dean Mario wonders if they might be “spurious creations by an enterprising (read nefarious!) individual.” He points out that old punches are available on the antique and /secondary market, from court usage, trolleys, trains and boats, etc. Chris Ryan, who publishes the Revenue Newsletter, commented:

“...virtually identical ‘L’ and ‘P’ punches can be found on Quebec law stamps (see Zaluski, Vol 6). So perhaps a complete guess could be documents (envelopes or a cheque, the 2-cent tax on cheques) that were entered in some sort of Quebec legal action? But this is just a guess.”

Anyone else?

POPE FURNITURE FOLLOW-UP

On the front page of #132, Gregory Pope asked for help in securing covers from Pope’s Furniture and Mattress Factory, of which three types are listed in NSSC. Member James Luetje was able to find one for Gregory, which Gregory has been able to purchase for a modest amount. He is still looking for more.

ARTICLES NEEDED FOR 2009 NEWSLETTERS

As you will read on Page 7, we will be issuing four 16-page newsletters next year, saving some postage costs while allowing room for longer articles. This could be your opportunity to place the results of your interest/research you may have been working on for years! Articles up to six pages in length are welcomed. We still need shorter ones, too! Attach to email or send them to the editor, at the address below.

Chairman/Editor: Norris (Bob) Dyer, 1708 Granada Court, Petaluma, Ca 94954 nrdyer@comcast.net
Treasurer & Circulation: Martin Goebel, 13 O’Mara Place, St. John’s NL A1A 5B7 goebel@nf.sympatico.ca

THE NEWFIE NEWSLETTER
OF THE NEWFOUNDLAND STUDY GROUP OF BNAPS

Number 133

November/December 2008

INTERESTING USE OF SURCHARGED STAMP

This U.S. postal card was submitted to the newsletter by Jean-Claude Vasseur. It was sent from St. John's on **NO 23 97** during the provisional period, using Type II (Scott #76), for a total rate of 2¢. But was that correct???? A U.S. postal card used from Newfoundland? I sent it to Colin Lewis for his opinion as he has a similar card (but absent the adhesive) sent from the same party to the same addressee on **DE 8 97** on Page 138 of his BNAPS Exhibit Book *Newfoundland Postal History 1857-1899*. – THE EDITOR



Here is what Colin wrote:

...you will note it is to the same address and has not been uprated, or taxed. As both cards are from a dealer there probably was some philatelic contrivance in their use. This type of reply card should only have been used within the U.S. domestic system and, the fact it was sent to Newfoundland would mean it was underpaid *for the return and needed 2¢ in stamps*. I have seen similar uses from other British Colonies where the short paid amount (1¢ in this case) has been paid by that colony's stamp (Bermuda is one location I have noted such use). My card got through the system (contrary to UPU regulations) without receiving a Newfie tax mark and the short payment was completely ignored, or not even noticed, when received in the U.S. Was it a sharp-eyed operative in St. John's GPO who spotted that this one was underpaid by 1¢ [actually 2¢ as Colin explained above] hence the Newfie stamp or was it a little help from a friend? The answer to that will never be known but stamp dealers did get up to lots of interesting things during this period.

**THE NEWFIE NEWSLETTER
OF THE NEWFOUNDLAND STUDY GROUP OF BNAPS**

Number 133

November/December 2008

Page 24

GONE BUT NOT FORGOTTEN – CARL MUNDEN

PLACENTIA BAY

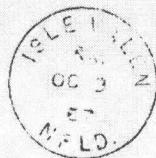
HAYSTACK

Opened as a way office in 1889. Became a post office in 1891. Office closed June 29, 1957. Population 115



ISLE VALEN

Open as a way office in 1856. Became a post office in 1891. Closed Sept. 17, 1968



THE NEWFIE NEWSLETTER
OF THE NEWFOUNDLAND STUDY GROUP OF BNAPS

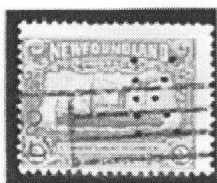
Number 133

November/December 2008

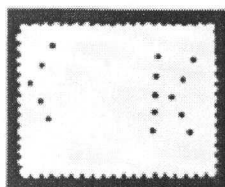
The perfin corner by Barry Senior

The "K" perfin of Knowlings Ltd

The use of the G K perfin appears to have come to an end in late 1922. The latest recorded usage is on a postcard to England on October 3 of that year. George Knowling passed away on November 23, 1923 and in his will he left his business, G. Knowling Limited, to his wife and seven surviving children. Nothing further is heard from the perforator until a 2 cent stamp, #146, from the 1928 Publicity Issue shows up with a dated cancel of Jan. 3, 1928. This is interesting in that the stamp was only issued the previous day. Since that time several others have come to light. Pictured below are two of the 2 cent stamps and a 10 cent stamp from the 2nd Publicity Issue, re-engraved and without watermark.



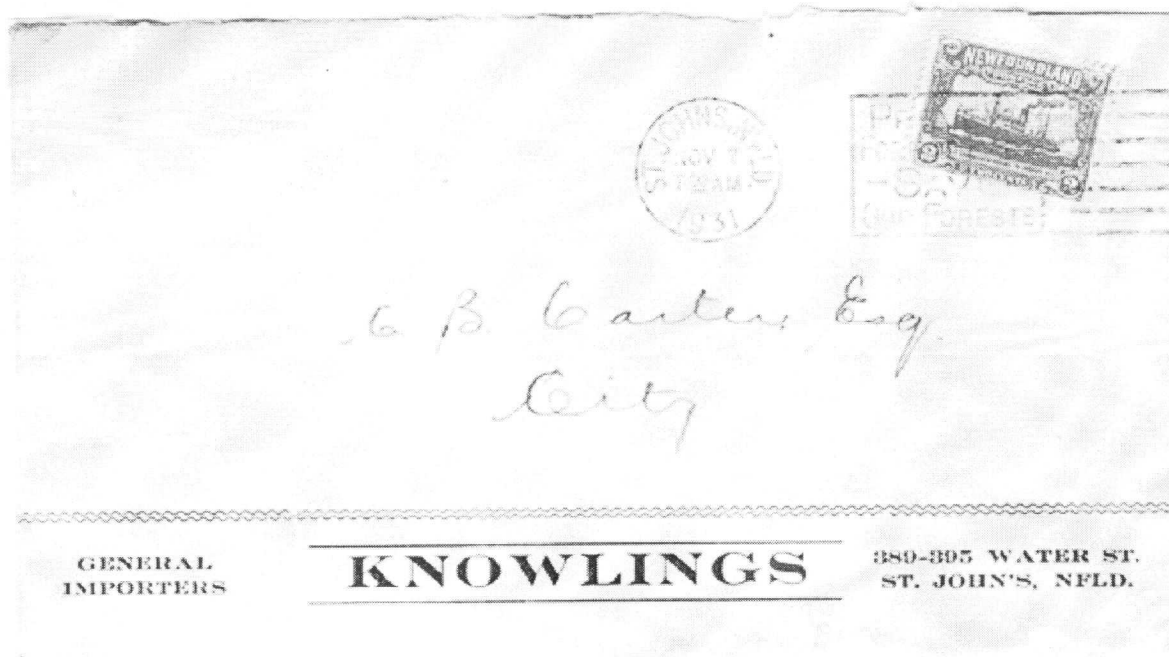
Position 1



Position 7



Position 1



This cover from Knowlings, dated November 7, 1931, confirms the change in name of the company and supports the conclusion that the original GK perforator was deliberately altered to a K in keeping with the new name of the company.

THE NEWFIE NEWSLETTER
OF THE NEWFOUNDLAND STUDY GROUP OF BNAPS

Number 133

November/December 2008

NEWFOUNDLAND SLOGAN CANCELS - George McGowan

Part IX

In my experience, one of the most difficult to locate Newfoundland Slogans is NSSC PS #11, KEEP/ SUNDAY/ SACRED. This slogan was only used for a short four month period from October 30th 1930 until march 2nd 1931. Of the few examples that I have, most are found on flight covers, (mostly during January and February of 1931).

Featured here (Figure 1) is the front of a NSSC FF#29 cover prepared by Reverend Butler. The St. John's back stamp (Figure 2) displays the KEEP / SUNDAY / SACRED canceled Feb.18, 1931.

Figure 1

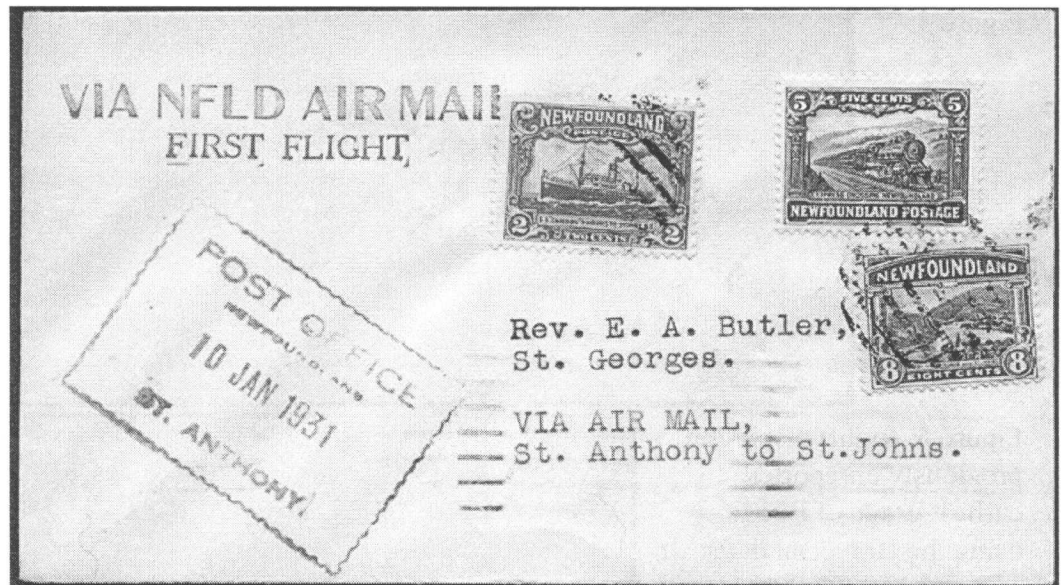
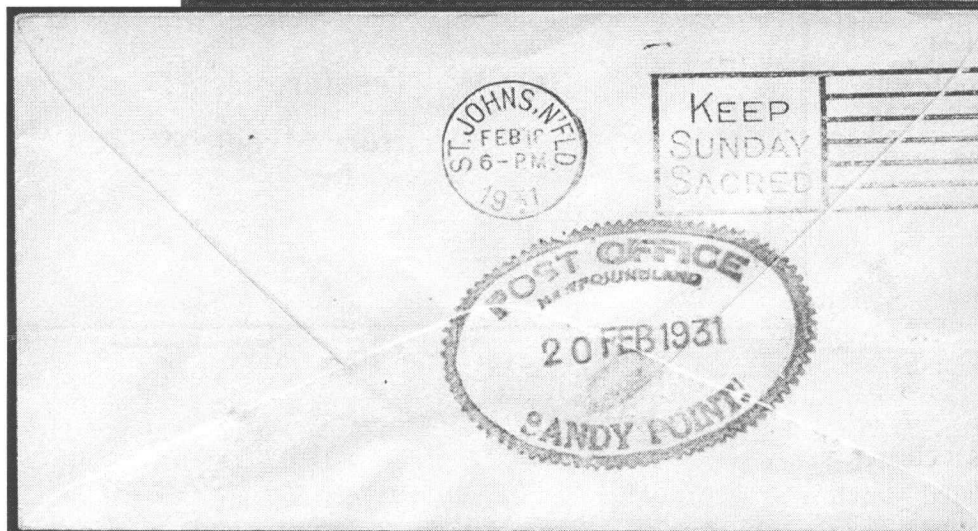


Figure 2



Until now, each of the slogan cancels, (PS 1 – PS11) has been struck using equipment supplied by the International Postal Supply Co. This next slogan, PS12 and PS12a, BUY GOODS / MADE IN / NEWFOUNDLAND, provides us with a major change. PS12, appearing from May 3rd 1934 until Dec 3rd 1935 used International equipment. David F. Sessions reports that "...the slogan BUY GOODS / MADE IN / NEWFOUNDLAND has also been reported in the replacement Universal machine..." Evidently, sometime in 1935 equipment from the Universal Stamping Machine Co. was acquired. Figure 3 illustrates PS12 on a cover postmarked May 7, 1934, using the International dater (see next page).

(Concluded Next page)

**. THE NEWFIE NEWSLETTER
OF THE NEWFOUNDLAND STUDY GROUP OF BNAPS**

Number 133

November/December 2008

NEWFOUNDLAND SLOGAN CANCELS (Concluded) - George McGowan

Part IX

Figure 3.

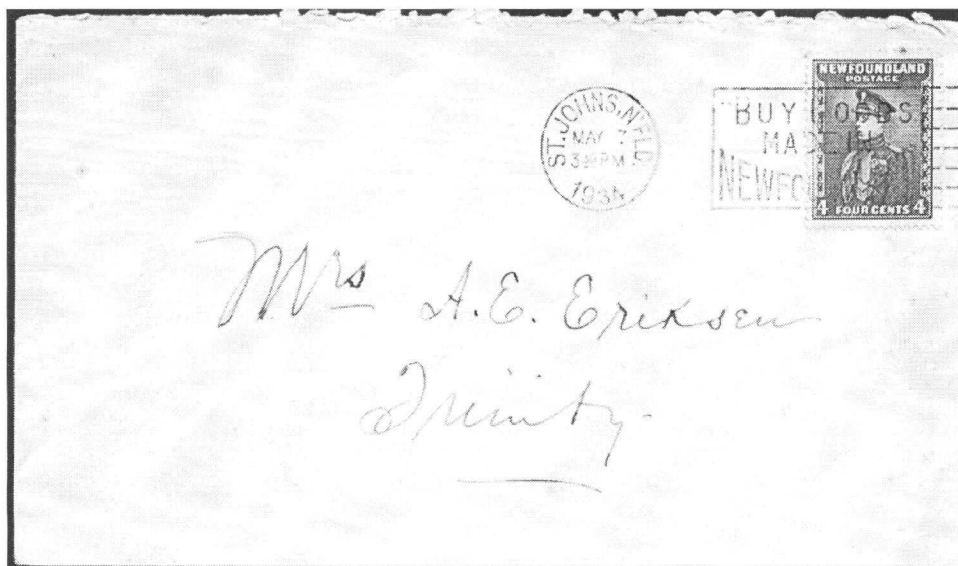


Figure 4 (right) displays a previously unreported earliest usage of PS12a, using the Universal dater. It carries a May 23, 1935 postmark. The EKU reported in the NSSC for PS12a was June 25, 1935 and the latest usage being Nov. 23, 1937.

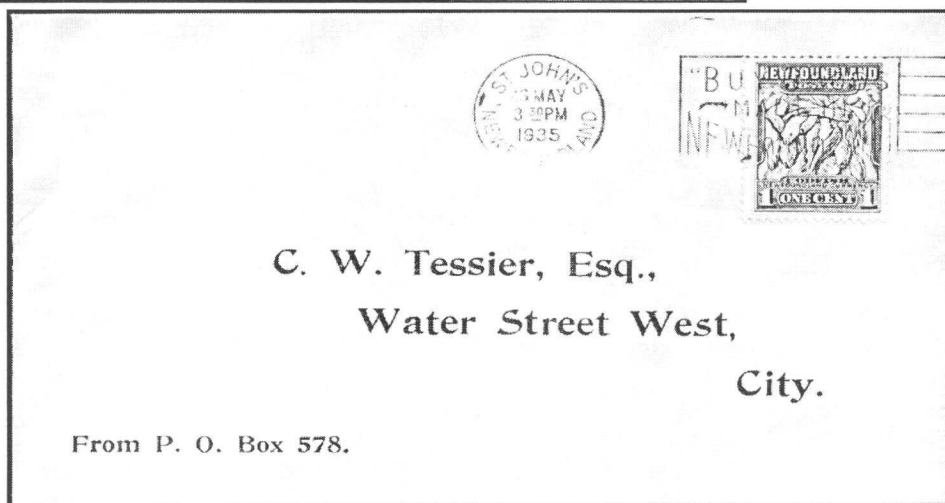
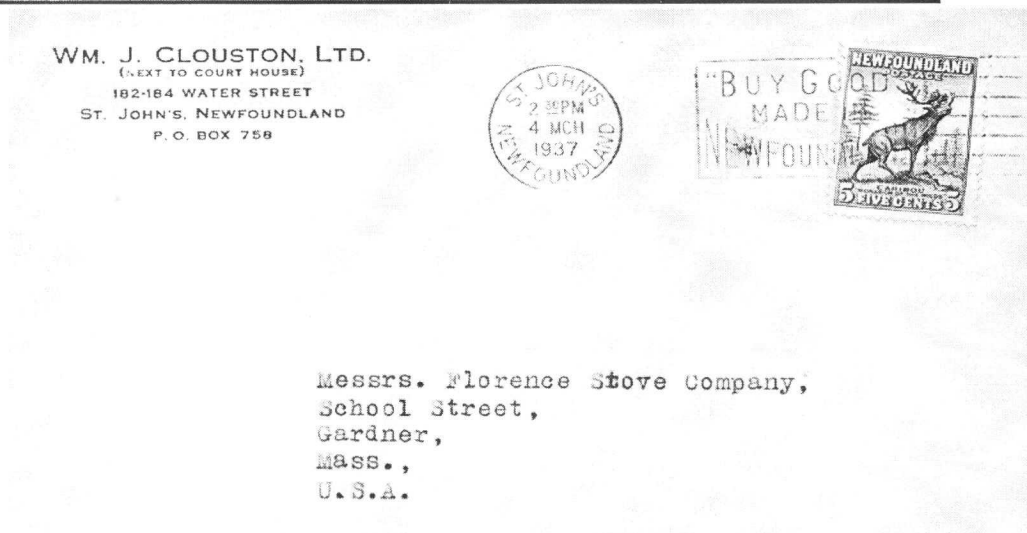


Figure 5 (right) is a clearer strike of PS12a dated March 4, 1937.



As always, I would welcome corrections and comments,
geolotus2003@nycap.rr.com

Messrs. Florence Stove Company,
School Street,
Gardner,
Mass.,
U.S.A.

**THE NEWFIE NEWSLETTER
OF THE NEWFOUNDLAND STUDY GROUP OF BNAPS**

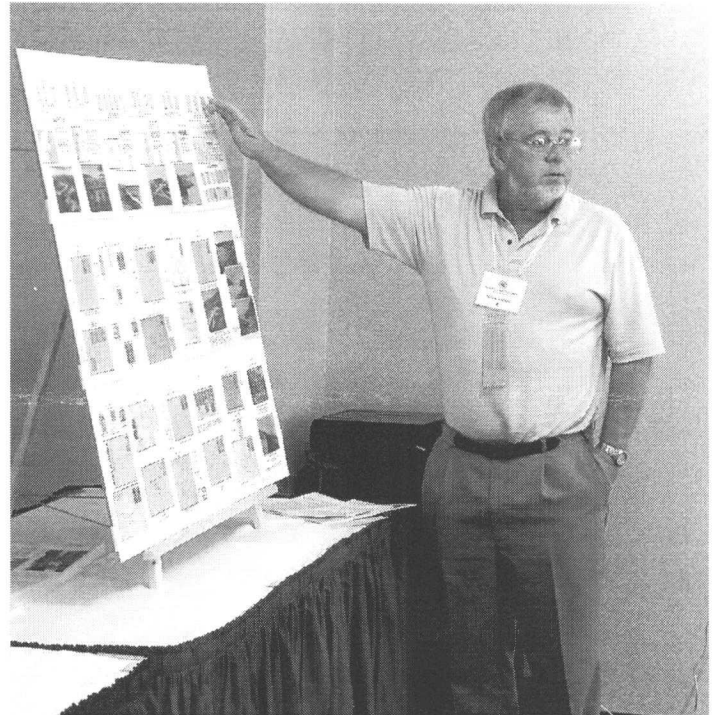
Number 133

November/December 2008

BNAPEX 2008 AND NEWFOUNDLAND PHILATELY

There were 14 at the Newfie Workshop on Friday at the Halifax convention. Brian Stalker, seen to the right, was impressive with his presentation *Calling all Ports West by South...Bowring Brothers Coastal West Mail Service, 1904-1919*. His related exhibit downstairs did well, as you can see below.

The major topic in the business part of the meeting was the *Newfie Newsletter*. The title will not change for 2009 but there will be four **quarterly** issues of 16 pages each. There was a length discussion on whether the newsletter could be sent electronically, attached to email as a PDF file. I explained that first I would need software for making PDF's and be able to understand it! If successful, I would announce this in a hardcopy issue next year and ask those interested in receiving electronic copies to provide me email addresses. Hardcopies would continue to be produced for those who do not step forward. This would save the group money for printing and mailing, and impact future dues for those receiving the letter by email. The advantage for those able to do so is that all images would be in color. This item is still under study and comments are welcomed.



Note the large number of Newfoundland exhibits at the show and their awards!! Group members have * after their names.

Multi-Frame Exhibits

Gold; Meyerson Award	Peter Motson*	Newfoundland Airmail Stamps and Airmail Flights: 1919 – 1948
Gold; Ed and Mickey Richardson Award	Brian T. Stalker*	Newfoundland's South Coast Traveling Post offices: Routes, Postmarks, Steamships and Mail Clerks: 1888 – 1968
Gold	John M. Walsh	Newfoundland: 1898 Queen Victoria Issue First Revenue Series Used on Documents
Silver	Terry Harris	Newfoundland Stamp Dealers

Single Frame Exhibits

Gold	David Bartlet	Booklets of Newfoundland
Gold	Colin Lewis*	Newfoundland Postal History – The Pence Period 1 January 1857 – 6 April 1865
Silver	Carl Munden*	Handstruck Postmark Types of Pre-Confederation

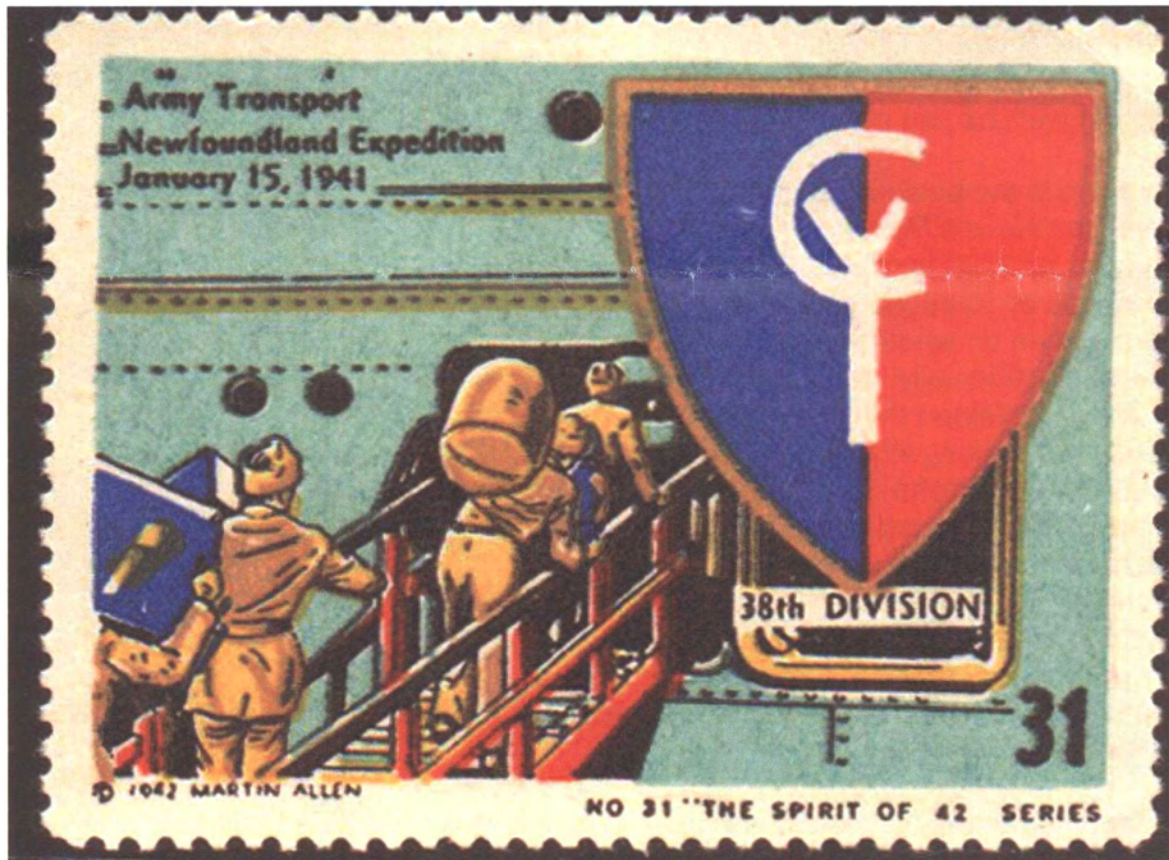
THE NEWFIE NEWSLETTER
OF THE NEWFOUNDLAND STUDY GROUP OF BNAPS

Number 133

November/December 2008

UNUSUAL WW II MILITARY LABEL – The Editor & Ron McGuire

I purchased this label on eBay, and immediately asked for help from several members. The balance of the commentary is from Ron McGuire who came to the rescue.



July 23 I've never seen this very attractive label nor any of the others in the series. It is unusual and particularly useful that the label includes, what I assume is the name of the creator of the labels, 'Martin Allen', the year he 'Re[gistere]d' the designs, [19]42, for what he called 'The Spirit of 42 Series', and the label number, NO. 31, repeated on the design. The title is undoubtedly a take off on the earlier, well known "Spirit of 76", patriotic term. I know the American military presence in NFLD began early in 1941 with the construction of their first bases, but do not know an exact date. It is interesting that the US Army 38th Division was not activated until 17 January 1941, two days after the "Army Transport /Newfoundland Expedition /15 January 1941" date which is on the label. I have not heard of this Expedition before but it may well be what the Americans called the group that first went to Newfoundland.

I could find no reference that the 38th was in Newfoundland. The 38th, was known as the Cyclone Division, thus the CY on their pennant. It went overseas on 21 June 1944, entered combat on 11 July in New Guinea and continued through those terrible battles at Leyte, Luzon and the Southern Philippines until 4 July 1945, coincidentally, Independence Day. Hope this is of some help.

PS ---since preparing this I recalled a book "Political Campaign Stamps" by Mark Warda, Krause Publications, 1998. Its title is misleading because it has much more than Political stamps. On page 162, listing WW-211 illustrates No. 8 in the series---"Japanese planes bomb Pearl Harbor, Hawaii, December 7, 1941." with the crest of the 28th Division. The illustration is in B & W, 80% size and too poor to scan. There is no other info on this "stamp" but it does confirm that Mr. Allen was not numbering his labels chronologically, because No. 31's date is nearly a year earlier than No. 8's. If he was using Division number sequence that also does not add up. **(Concluded Next Page)**

**THE NEWFIE NEWSLETTER
OF THE NEWFOUNDLAND STUDY GROUP OF BNAPS**

Number 133

November/December 2008

UNUSUAL WWII MILITARY LABEL (Concluded)

The editor – The next day Ron sent this email and the cover seen below - quick philatelic detective work.

July 24. How's this for the answer as to why there is the 15 Jan 1941 date on the label? Finally, one of those several "philatelically inspired" covers I have picked up over the years has proven to be useful. It should be a nice addition for your article Bob. Unfortunately the line in the cachet text for the army transport ship name is blank. Wonder what the '---R.C.D. 50---' on the bottom line represents? -- Ron McGuire

"PEACE, DEFENSE, SAFETY AND GOOD WILL"
UNITED STATES ARMY BASE
"AMERICAN FORCES IN NEWFOUNDLAND"
FIRST DAY POSTAL SERVICE



UNIT LOCATED ABOARD THE ARMY TRANSPORT
UNTIL QUARTERS ARE PROVIDED ON
SHORE AT NEWFOUNDLAND UNITED STATES ARMY
BASE. ACQUIRED BY THE EXCHANGE OF THE FIFTY
U. S. DESTROYERS.

--- R. C. D. 50 ---



*V.E. Hestrick, M.D.
5933 Lansdowne Ave
Neshaminy, Philadelphia
Penn.*

The editor – Now you can contribute? Any other information about the label? Can you fill in the blank above? And "R.C.D. 50"?

DUES REMINDER If you haven't already paid your dues, please do so as soon as possible. Canadian postal rates are going up next year and we need your continued financial support.

VINCENT G. GREENE BNA TOPICS AWARD

I was very pleased to be the recipient of this award for best article(s) in BNA TOPICS in 2007. I received it for the two-part series on Reverend Butler – *The Man from Sandy Point*. Since the article came out I have been in contact with two of his grandchildren, and finally was able to get a better photo of him. I will report on this in the next issue, and include the photo. – The Editor.

THE NEWFIE NEWSLETTER
OF THE NEWFOUNDLAND STUDY GROUP OF BNAPS

Number 133

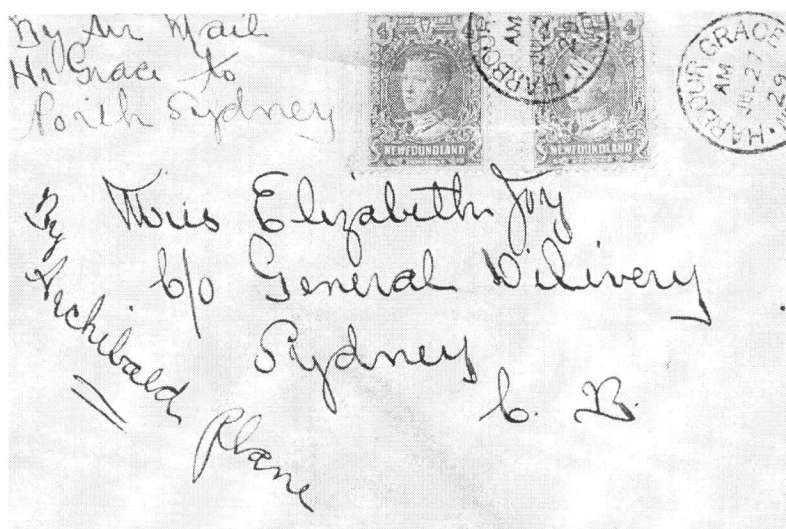
November/December 2008

NEW POSTMARK FOR 1929 "BLUENOSE" FLIGHT?

Submitted by Colin Bulloch

I recently acquired this "Bluenose" cover (AAMC FF-32) and can find no reference in the standard works that any mail was accepted at **Harbor Grace P.O.** This clearly was. I am also a little puzzled by the 12¢ charge when others in my collection have a 4¢ charge. Late for payment?

R.D.
Archibald
Was one of
the pilots.



Note - two
Harbor Grace
postmarks.

Receivers
are correct.



Editor's Note. AAMC, Harmer and NSSC all refer to this mail as accepted in St. John's and postmarked there. The flight left Harbor Grace at 2:50 P.M. on July 27, 1929. Note the "A.M." Harbor Grace postmark of **JUL 27 29**. The postmarked mail was taken from St. John's to Harbor Grace and arrived there "after midday" (per Harmer). This cover could have been supplemental, entering the system in Harbor Grace that morning, and merged with the St. John's Mail. Perhaps the additional postage was a late charge. The back receivers show it was carried on the flight. This looks like a nice discovery by Colin over 75 years later! Colin and I would appreciate any comments relating to this piece.