

**THE NEWFIE NEWSLETTER**  
**OF THE NEWFOUNDLAND STUDY GROUP OF BNAPS**

**Number 128**

**January/February 2008**

**EDITOR'S COMMENTS**

**THIS ISSUE**

- Page 2- The Perfin Corner – Barry Senior  
Page 3-4- Newfoundland Slogan Cancels Part IV – George McGowan  
Page 5- Newfoundland Postal History January 1857- June 1893  
Page 127 – Colin Lewis  
Page 6-8- 42 Re-entries...more to come – Jean-Claude Vasseur  
Page 9- Gone But Not Forgotten, Page 19 – Carl Munden  
Page 10- Newfoundland Postal Stationery 1897-1941, Page 59  
Horace Harrison  
Page 11- Update on Edward Cover Census – Editor  
Page 12- Commemorative Cover for 70<sup>th</sup> Anniversary of Pan American Clipper Flight -SJPS



**CLIPPER COVER**

This issue is 12 pages, but don't expect this often! The St. John's Philatelic Society has paid the extra expenses for Pages 11-12, to help promote an interesting commemorative cover.

**EARLY NEWFIE NEWSLETTERS NOW ON LINE**

The first 97 Newfie Newsletters (missing a stray page or so) are now on line on [www.bnaps.org](http://www.bnaps.org). From the main page go to the Horace Harrison Online Library. At the upper left you will see a link – Study Group Newsletters. Then you will see all the study group newsletters available, including the Newfie ones. This massive undertaking was done by Charles Livermore.

**NEW MEMBER CONTRIBUTES FIRST ARTICLE**

Jean-Claude Vasseur lives in France and joined our group several months ago. He has many collecting interests in Newfoundland philately, one of them being re-entries. He also collects Newfoundland air mails, and his 80-page exhibit recently won top honors in France. I know you will enjoy his research.

**NEW POSTAL STATIONERY EARLIEST RECORDED POSTMARKS**

Andrew Winter is another new member. He has found a confirmed new ERP for the 1933 2¢ King George V postcard (Webb P14 and NSSC PC17) of March 6, 1933. Another ERP has just been confirmed by Robert Lemire and Bill Walton! It is April 15, 1890 for the 1¢ post band W1a (NSSC PB1) on a wrapper to Rotterdam. This was discovered by Doug Hannan. Looks like it might be time to update the chart we published in Newfie Newsletter #106, Page 3.

**NEW MEMBERS**

New members in 2007 included: John Bloor, Gloria Brantner, Charles Burton, Earle Covert, Chris Hargreaves, Ira S. Moskowitz, Liane G. Sismondo, Douglas Squires, Jean-Claude Vasseur, Andrew Winter, and Jerry S. Ball. Thanks for joining! A few existing members are late on their dues, however. If that includes you, you will find a notice from Martin Goebel affixed. Our total group membership will be 100, with the newcomers, if everyone renews. Amazing!

**SHOULD I DROP HARRISON'S POSTAL STATIONERY FROM NEWSLETTER?**


I have several nice articles awaiting publication in the newsletter, and wonder how many members feel I should liberate one page by eliminating Horace Harrison's postal stationery page, which has been running since early 2000. One option might be to include a page from his exhibit when I need a page for any particular issue. Comments?


## **The perfin corner** by **Barry Senior**


This is the A8 pattern used by Ayre & Sons Ltd., the taller of the two patterns they used.


1929 - 1931 Publicity Issue - Re-engraved, no watermark


All values except the 1 cent are recorded. 2 cent position 8 and 4 cent position 2 are Discovery Copies.


  
Position 2


  
Position 8  
Discovery Copy


  
Position 2


  
Position 1


  
Position 2  
Discovery Copy

  
Position 2

  
Position 2

  
Position 2


  
Position 2

  
Position 2

Bought of Ayre & Sons.

1930 Limited Agents

July 7	No Premium of Policy 22977801 L. 44 Post Note on household furniture	1254
--------	---	------

  
208

The 2 cent value paying the revenue tax for an exchange of more than \$10.00.



**THE NEWFIE NEWSLETTER**  
**OF THE NEWFOUNDLAND STUDY GROUP OF BNAPS**

**Number 128**

**January/February 2008**

**NEWFOUNDLAND SLOGAN CANCELS** - George McGowan

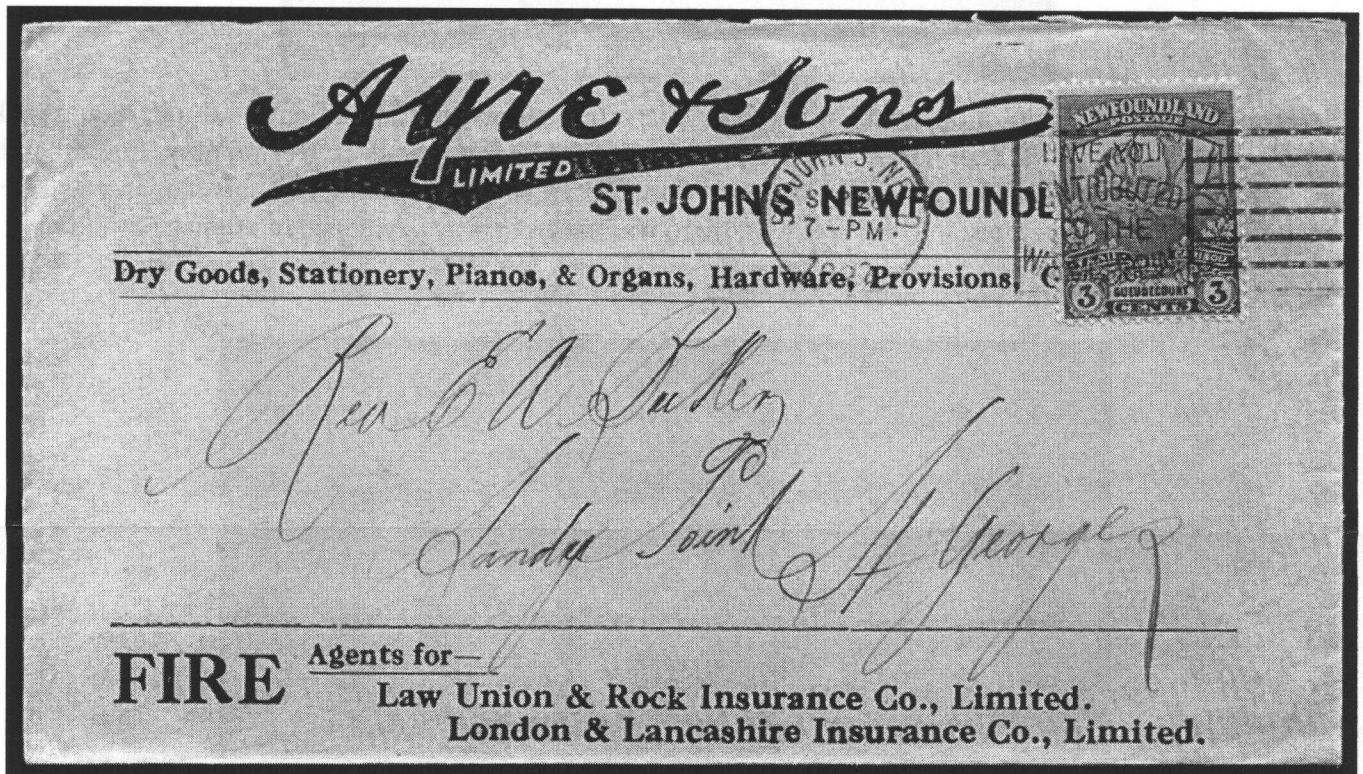
**Part IV**

We now come to slogan #PS3 (NSSC), HAVE YOU CONTRIBUTED TO THE WAR MEMORIAL? This cancel is a relatively scarce item to find, being only in use for about six months. Both Derik Paul and the NSSC report that there are two dies, most notably distinguished by the height of "TO THE". On PS3 the words "TO THE" are 2.4mm high and on PS3a the same words are 2.8mm high. Both Paul and NSSC further state that die 1 does not have the notorious "curve" under Time, while die 2 does.

Very recently, while reviewing Derik Paul's notes concerning PS3, I noticed he stated "general absence of the curve" indicating to me that he has seen contrary examples. In my holdings, I have examples of PS3a with and without the curve. Again, the curve seems to be an enigma, (see parts I through III).

The reported earliest use date for PS3 is March 14, 1922, and the latest use date is September 28, 1922. For PS3a, the earliest use date is the same and the latest use date is September 20, 1922.

Illustrated below is an example of PS3, dated Sept. 26, 1922, and sent to Reverend Butler in Sandy Point, St Georges.



At this point, if you will, I would like to leave PS4 (which will require more space) for part V of this series and now look at PS5. PS5, BRITISH EMPIRE EXHIBITION 1924, was used from October 10, 1923 until October 31 of 1924. At some time, approximately on or about January 6, 1924, the slogan die changes. We designate these PS5- width between the top of the "B" in British to the bottom of the "E" in Exhibition is 20.5mm, and, PS5a- the same distance is now 20mm.

*Continued Next Page*

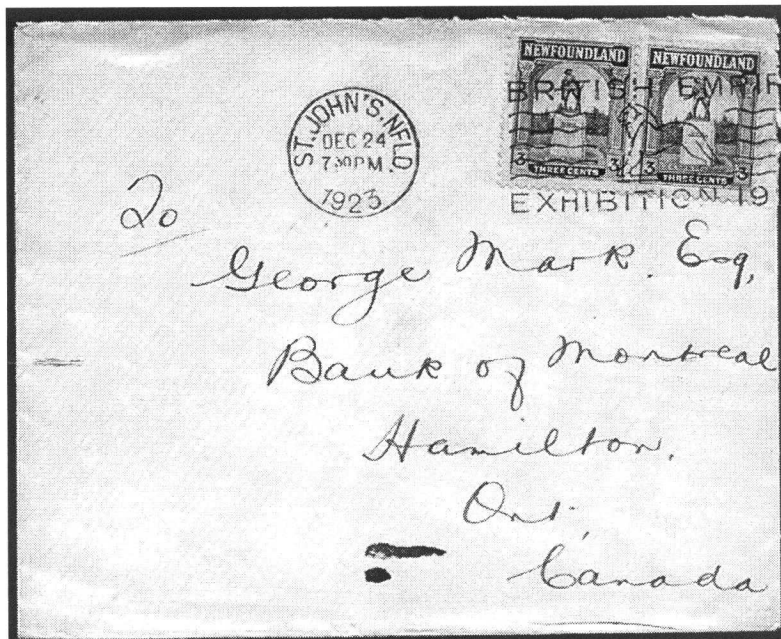
**THE NEWFIE NEWSLETTER**  
**OF THE NEWFOUNDLAND STUDY GROUP OF BNAPS**

**Number 128**

**January/February 2008**

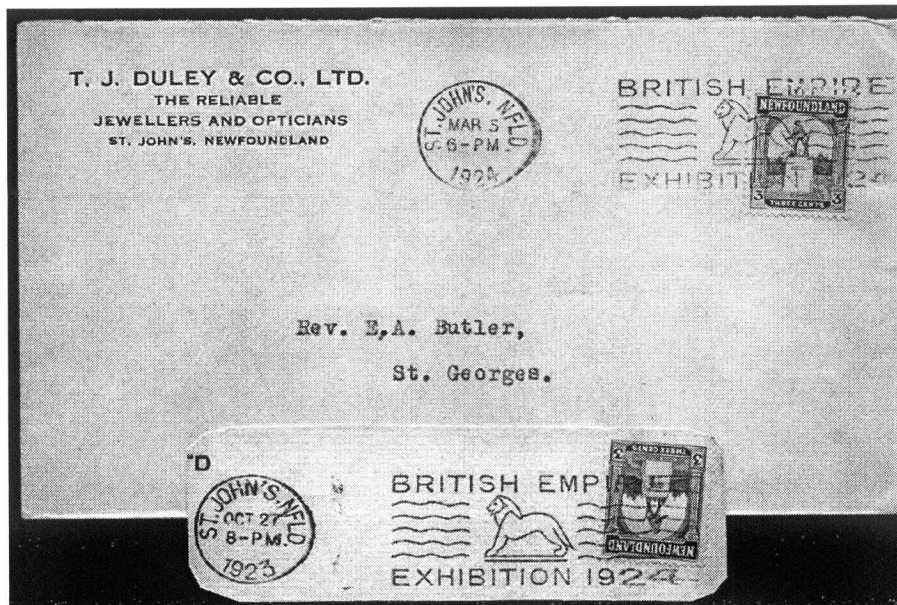
**NEWFOUNDLAND SLOGAN CANCELS** Part IV (Concluded) - George McGowan

Figure 2, (below) dated December 24, 1923 shows an example of PS5.



The promotion of the Exhibition can be found on slogans throughout the Empire, and, I think, would make up a nice collection. Derik Paul notes that a similar cancel bearing the year 1925 was reported more than 60 years ago but has not been confirmed in the years since. It can be further noted that this slogan was rarely struck fully onto the envelope, and, when it was, there was almost always evidence of slippage at the right.

Figure 3 illustrates this shift on a piece (PS5) and a cover ( PS5a).



As stated previously, If you have any comments or additions to this series, please contact me or the editor.

George McGowan PO Box 482 East Schodack, NY 12063-0482 (518)-479-4396 [geolotus2003@nycap.rr.com](mailto:geolotus2003@nycap.rr.com)



**THE NEWFIE NEWSLETTER  
OF THE NEWFOUNDLAND STUDY GROUP OF BNAPS**

**Number 128**

**January/February 2008**

**NEWFOUNDLAND POSTAL HISTORY JANUARY 1857- JUNE 1893 – COLIN LEWIS**

Page  
127

South Africa – Cape Colony

Single Letter Rate 5 Cents Per ½ Ounce



St. John's September 8<sup>th</sup> 1894 Pretoria October 9<sup>th</sup> 1894

South Africa – Transvaal

Double Letter Rate 10 Cents Per Ounce

Mail Service Suspended



St. John's September 8<sup>th</sup> 1899 Pretoria January 26<sup>th</sup> 1900 St. John's Dead Letter Office July 18<sup>th</sup> 1900  
Note: Service suspended due to Boer War.

## **42 Re-entries and ... more to come – Jean-Claude Vasseur**

### **- The saga of Newfoundland Scott 145 –**

A couple of years ago I had the chance to discover the fabulous website of Ralph E. Trimble **RE-ENTRIES.COM**. I noticed that Scott 145, 1c green Map of Newfoundland, printed by De La Rue may offer a number of interesting re-entries. Last year I put my hands on a corner block of 25 and after finding numerous re-entries on this block, decided to map the complete sheet. The purchase of five other blocks followed. Here are my findings. The work is far from being finished and additional multiples are needed to write the complete story of this stamp.

With reference to Walsh catalogue the so-called Publicity Issue of 1928 printed by De La Rue was in use from January 1928 to September 1929 – 21 months when the production was passed to Perkins & Bacon with new plates, the former printer having refused to give the plates to the later. Bad condition of the De la Rue plates may have been the reason for this refusal. The De La Rue production of the 1c green was 30,150 sheets of 100 stamps. It is usually agreed that a single plate was used for this printing.

First of all, all the stamps I have inspected, have 3 constant flaws consisting of dots (marks) in the stripes of the sea, very obvious. Thus, it is very likely that the original plate and subsequent repairs have been made with a unique roller unless the original die left identical marks (has anybody has ever seen a proof of this stamp?).

The re-entries are very visible due to large white spaces, especially in the area of Newfoundland and Labrador marked by deep lettering, borders and costs. Thus, the misplaced entries could not be erased by subsequent entries.

Here are the positions of the six blocks I have collected:

Block A : NW corner (1 to 37 + 46 and 47) perf. 14 x 13.8

Block B : South Half sheet (51 to 100) perf. 14 x 13.8

Block C : NE corner (6 to 50) perf. 14.2 x 13.8

Block D : SE corner (56 to 100) perf. 14 x 13.8

Block E : NE corner (6 to 50) perf. 14.2 x 13.8

Block F : NE corner (6 to 50) perf. 14.2 x 13.8 – this block in all respects is identical to block E

Block C was my first purchase. It had 9 stamps with re-entries. My second block was B, a half sheet with 14 re-entries including the marvellous pos. 60 showing very readable lettering shifted by 2.3mm. A overlaps C and proved to be from the plate in identical state. D came with a surprise - no re-entries. E and F arrived with another surprise - 11 re-entries, all different from those on C except one (pos 39).

Due to the number of re-entries shown on blocks with them (averaging 40% of the stamps) and the existence of a block without any re-entry I am assuming that this later block came from a sheet in the original state, potentially without any re-entries. Blocks C, E & F showed that at least TWO subsequent states with re-entries exist.

Examination of position 39 is very interesting as the same re-entry shows on block C, E & F, being faint on the later two. Thus I hypothesize the existence of at least three states of the plate. D - original (D), state n (A&C), state n+1 (E &F). There is no easy way to determine where B stands. [Continued Next page.]

**THE NEWFIE NEWSLETTER**  
**OF THE NEWFOUNDLAND STUDY GROUP OF BNAPS**

**Number 128**

**January/February 2008**

**Vasseur (Continued)**

Forty-two different stamps with re-entries have been found of which three are major (see images 1-3):

- Pos 60 block B - a 2.2mm vertical shift
- Pos 3 block A - re-entries above and below
- Pos 10 blocks E & F - multiple re-entries due to shifting during the process of engraving.

The maximum shift found is 2.7 mm on pos 30 block C (faint). Beside the 3 major types, 12 other re-entries are strong and about another dozen are fair. All are vertical shifts, with 2 showing additionally a small horizontal shift.

I have also looked at the relative positions of stamps on B (right corner) and D., comparing scans at 800 dpi of both blocks. I overlaid stamps of D over B. Results are surprising:

- While I was expecting possible vertical shifts on stamps with re-entry, all stamps fit exactly vertically.
- Rows showed a different “scale” horizontally, the stamps and the spaces between them being larger on block D - such that the estimated whole width of sheet block D should be larger than the B by 3 mm! – 238.8mm against 235.8mm, but *both* blocks are perforated 14x13.8 with a width of 241.5 mm! I’m unable to explain this phenomenon. Possibly a different production method induced a different shrinking of the paper. Comments would be appreciated in this respect.

Also I would appreciate it if members owning (marginal) blocks of Sc#145 contacted me to allow me to inspect their material or photos of it.

I used the following special equipment: a Nikon binocular 40X and a Proscope HR video camera with 50X and 100X lens for the pictures, which gave a better definition than any scanner.

Jean-Claude Vasseur

Email – [jc-vasseur2@orange.fr](mailto:jc-vasseur2@orange.fr)

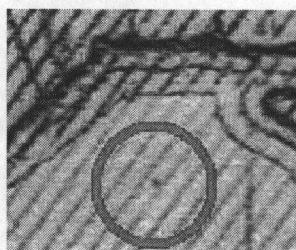
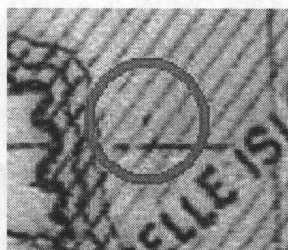
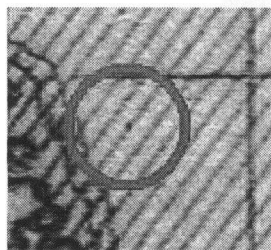


Figure 1.  
The three constant marks.



Figure 2.  
NEWFOUNDLAND  
re-entries above and below  
as well as bottom coastal  
line and more. Block A.  
Pos. 3.

**More photos next page.**



VASSEUR (Concluded)



Figure 3. There are no fewer than five levels of re-entries below the border and in lettering, likely caused by shifting of the roller. Note that all the design is doubled or tripled in this area. Block E&F pos. 10.

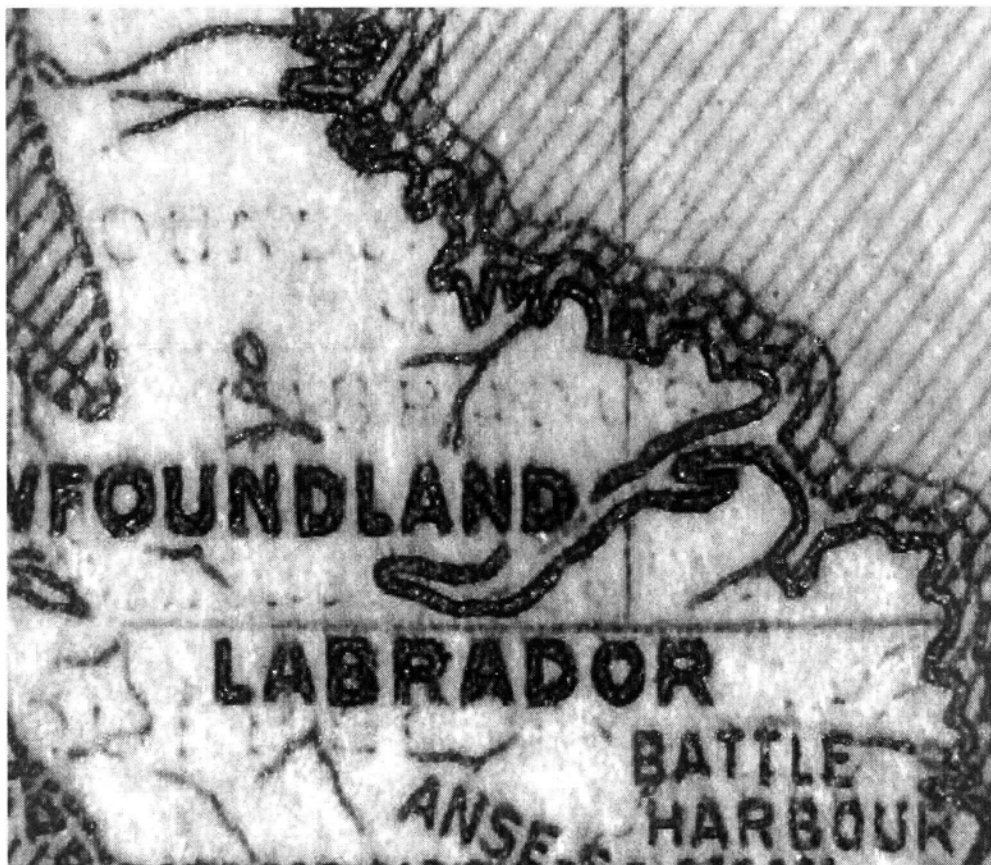
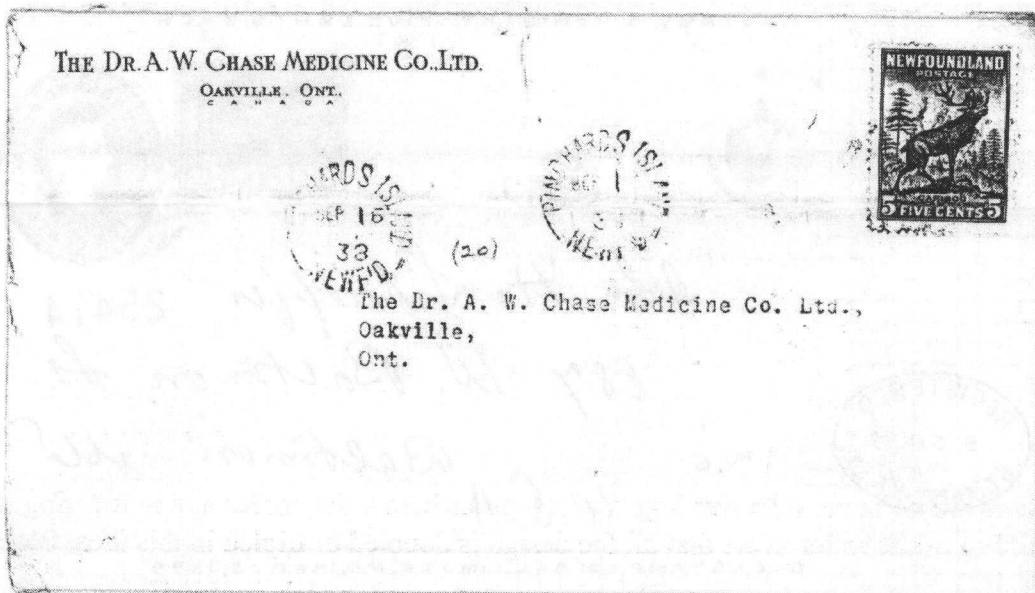


Figure 4. An enormous 2.2.mm vertical shift. Block B, pos. 60.

GONE BUT NOT FORGOTTEN – CARL MUNDEN

PINCHARDS ISLAND

Open 1905 Close Oct. 16, 1953 Population 264



FAIR ISLAND

Open as way office 1889 Became a post office 1891. Closed  
(moved to Centreville on mainland) Dec. 21, 1961 Population 212



NEWFOUNDLAND'S POSTAL STATIONERY 1873-1941 – Horace Harrison

Page 59





**THE NEWFIE NEWSLETTER**  
**OF THE NEWFOUNDLAND STUDY GROUP OF BNAPS**

**Number 128**

**January/February 2008**

**UPDATE OF COVER CENSUS OF 1¢ GREEN EDWARD STAMP**

YEAR	LOCAL	INLAND	CANADA	U.S.	ENG.	FOR.	PCARD	PHIL.	TOTAL
1888									
1889		1	1**	1	1*				4
1890		2	1				1	1	5
1891	1		1	1		3	2		8
1892	1	2	3		1	3	3		13
1893	1	2	3	5	2	4	1	4	22
1894	1	4	3	8		6	6		28
1895	10	6	6	6	3	3	3	2	39
1896	13	13	11	5	1	2	3		48
1897	10	13	1	5	1	1	4	1	36
1898		1	4	1		1			7
1899								1	1
1900		2	1		1	1		1	6
TOTAL	37	46	35	32	10	24	23	10	217

PHIL. = Philatelic, stamps exceeded known rate by more than "convenience" factor.

PCARD = Includes post cards to *all* destinations. These reflect use of single Edward stamp on 1880 1¢ postal card to make 2¢ rate.

1900 - The green Edwards were no longer available at the G.P.O. after January 1, 1900.

Uses *after* the year 1900 are considered philatelic.

\* EKV MARCH , March 4, 1889, St. John's Central to U.K. with 10¢ black and 3¢ QV brown.

\*\* EKV single franking 1 Ap 89 (receiver), unknown, to St. Ann's , Cape Breton Island, Nova Scotia.

The green Edward stamp was first released in January of 1888. The last printing was released ten years later in either late December 1897 or January of 1898.

I am looking for additional covers for this survey. Although photos or scans are nice I can get by with the following information and check it against the data I have for each cell:

- Originating Newfoundland post office;
- Destination;
- Postmark date (if not clear, transit or receiver date); and,
- Stamps on cover (e.g., one Edward and 2¢ orange codfish).

I last published this chart 14 months ago with 172 covers. I am hoping members (especially newer ones) have covers/data to send to me at mail address on Page 1 or by email.

Many of these stamps were probably used on St. John's local mail which has a 1¢ rate. **Why is it that the earliest drop cover for which I have data is from 1891?? - The Editor**

**SPECIAL COVER OFFERED BY ST. JOHN'S PHILATELIC SOCIETY**

On July 5, 1937 an experimental commercial flight, the Pan American Clipper III landed at Botwood, Newfoundland arriving from New York via Shediac, New Brunswick. The next day the Clipper III which was a Sikorsky 42 aircraft and was piloted by Captain Harold Gray, left Botwood for Foynes, Ireland. The same day a Short Empire Class flying boat, the Caledonia, under the command of Captain Arthur Sydney Wilcockson left Foynes for Botwood and landed July 6, 1937; they passed each other Mid-Atlantic. This marked the beginning of commercial transatlantic flights.



To commemorate the 70<sup>th</sup> anniversary of this milestone in aviation history and in anticipation of a re-enactment flight from Botwood to Foynes by a Canso Flying Boat, the St. John's Philatelic Society produced a commemorative overseas rate cover. The cover has a photo/picture of the American Clipper at Botwood, 1937 and the logo of the flight Committee and the society. It has \$1.55 international rate postage (Mary Pratt iceberg) and it was cancelled in Botwood July 5, 2007 and back stamped at Foynes, July 6, 2007. 500 covers were produced. The SJPS is offering them for sale to the NFLD Study Group members for \$10 or 3 for \$25. Please add

\$1 postage in Canada, \$2 US and \$3 elsewhere. Cheque only in US or Canadian dollars to Martin Goebel, 13 O'Mara Place, St. John's NL A1A 5B7, Canada

