

**THE NEWFIE NEWSLETTER  
OF THE NEWFOUNDLAND STUDY GROUP OF BNAPS**

**Number 127**

**November/December 2007**

**EDITOR'S COMMENTS**

**THIS ISSUE**

- Page 2- Gone But Not Forgotten, Page 18 – Carl Munden  
Page 3-4 Newfoundland Slogan Cancels Part III – George McGowan  
Page 5- Newfoundland Postal History January 1857- June 1893  
Page 126 – Colin Lewis  
Page 6 - Newfie Workshop at BNAPEX 2007.  
Page 7-8 Emil Reinhardt Krippner – Colin Lewis  
Page 9- The Perfin Corner – Barry Senior  
Page 10 Newfoundland Postal Stationery 1897-1941, Page 58 – Horace Harrison



**NEWFOUNDLAND EXHIBITS AT BNAPEX 2007**

There were some nice Newfoundland exhibits and group members did well:

Kevin O' Reilly – Gold, Reserve Grand and Myerson Award for *A Postal History of Labrador before Confederation*.

Brian Stalker – Gold for *Conception Bay Railway, Newfoundland 1898-1949*.

John Walsh (non-member) – Gold and Wilmer Rocket Award for *Newfoundland: Revenue Documents of 1898 Queen Victoria Revenue Issue*.

Colin Lewis – Vermeil for *Trans-Atlantic Mail 1810-1863 Newfoundland to Portugal and France*.

**NOTICE FROM CARL MUNDEN**

*Post Offices of Pre-Confederation Newfoundland*

Now available on CD. WORD 2000. Not MAC compatible. In colour. Point and click. 1100 different offices. Fully illustrated with all known postmarks. \$35.00 plus \$3 postage (Canada), \$4.00 (U.S.) and \$6.00 (international). Contact [carl.munden@ns.sympatico](mailto:carl.munden@ns.sympatico). Ca. 27 Brookdale Circle, Apt. 227, Dartmouth, Nova Scotia, B3A 4N5, Canada.

**STEVE FOSSETT – OUR FRIEND, APPARENTLY LOST FOREVER.**



Steve Fossett, renowned aviator, has apparently died in the Nevada dessert. He has not been found after weeks of searching. Holder of over 100 flight records, Fossett is best known to us as the pilot of the second transatlantic flight of the Vickers Vimy, in 2005. The St. John's Philatelic Society created 500 cached covers and many of you probably own one, signed by Fossett. I met him several times, and the photo to the left shows him shortly before the Vimy's departure. So sad... The Editor

Chairman/Editor: Norris (Bob) Dyer, 1708 Granada Court, Petaluma, Ca 94954 [nrdyer@comcast.net](mailto:nrdyer@comcast.net)

Treasurer & Circulation: Martin Goebel, 13 O'Mara Place, St. John's, NL, A1A 5B7 [goebel@nf.sympatico.ca](mailto:goebel@nf.sympatico.ca)

**THE NEWFIE NEWSLETTER  
OF THE NEWFOUNDLAND STUDY GROUP OF BNAPS**

**Number 127**

**November/December 2007**

Page 18

**GONE BUT NOT FORGOTTEN – CARL MUNDEN**

**PORT NELSON**

AKA Loo Cove Open 1932 Close Sept. 3, 1958 Population 215



**SAFE HARBOR**

Open 1904 Close Sept. 29, 1956 Population 300



*Mr E. E. Hellier  
Grisquet  
French Shore.*

**COWARDS ISLAND**

Open 1907 Close Oct. 7, 1957 Population 141





**THE NEWFIE NEWSLETTER**  
**OF THE NEWFOUNDLAND STUDY GROUP OF BNAPS**

**Number 127**

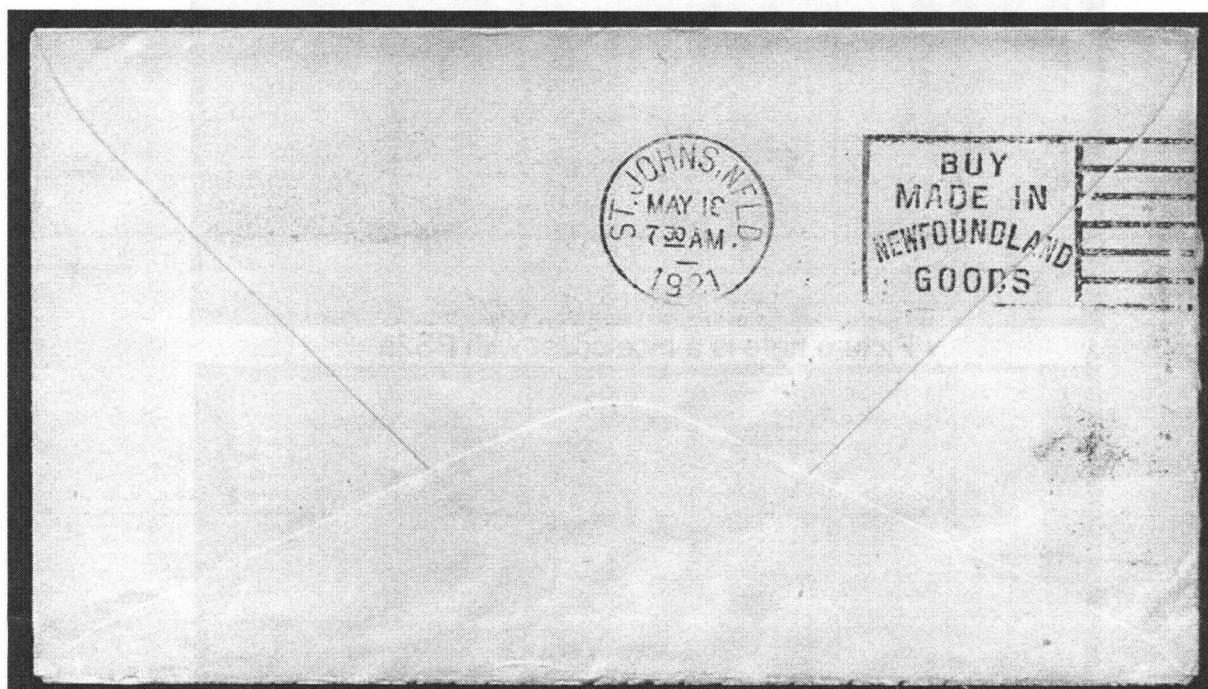
**November/December 2007**

**NEWFOUNDLAND SLOGAN CANCELS** - George McGowan

**Part III**

We begin pt 3 with NSSC #PS2, "BUY MADE IN NEWFOUNDLAND GOODS". Butt & Walsh list PS2 as being in use from May 12, 1921 to Sept 14, 1928. They also list PS2a which has the "curve" under the time in the hub dater as in use from May 12, 1921 to Sept 12, 1928, and PS2b being used at St John's East from Mar 24, 1928 to May 3, 1934.

Here is where Derik Paul did some excellent research and documented the gaps in usage of PS2 and PS2a at the GPO. He found it in use for most of 1921, almost none in 1922, most of 1923, no examples used in 1924 and 1925, a brief usage in 1926 and 1927, and the end of the use in 1928. He notes the first gap corresponding to the usage of PS3, the second gap corresponding with several other slogans, and the third and last gap corresponding to the first seasonal usage of PS7, "Newfoundland for Your Vacation..."



Illustrated here is the earliest example that I have, May 18, 1921, which has the "curve".

I have two examples of PS2 and 2a, one postmarked Mar 28, 1928 and one postmarked Mar 30, 1928, one having the curve and one not. To me, the curve has no rhyme nor reason, and as stated previously, continues to be a mystery. One theory that I expressed to Jim Luetje was that since the rest of Canada had switched over to the Universal machine buy this time, there could have been many extra hubs available, and they could have been prepared previous to each ½ hr change, thus minimizing down time.

PS2b, St John's East, has a spotty usage from the first known usage date until July of 1928. It looks like the GPO transferred a cancel to St John's East, and used other slogans. There is an overlap of the two post Offices using the same slogan from Mar 24, 1928 to Sept 12, 1928.

**CONTINUED NEXT PAGE**

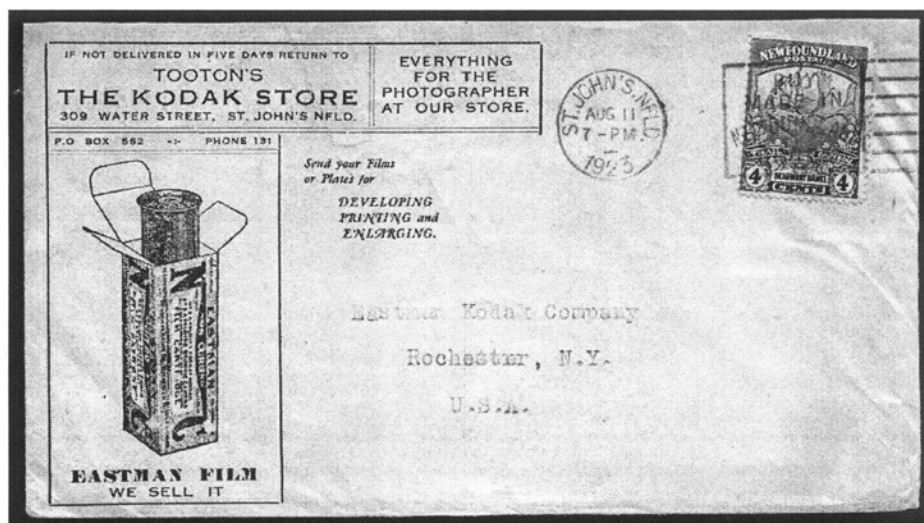
*THE NEWFIE NEWSLETTER*  
*OF THE NEWFOUNDLAND STUDY GROUP OF BNAPS*

*Number 127*

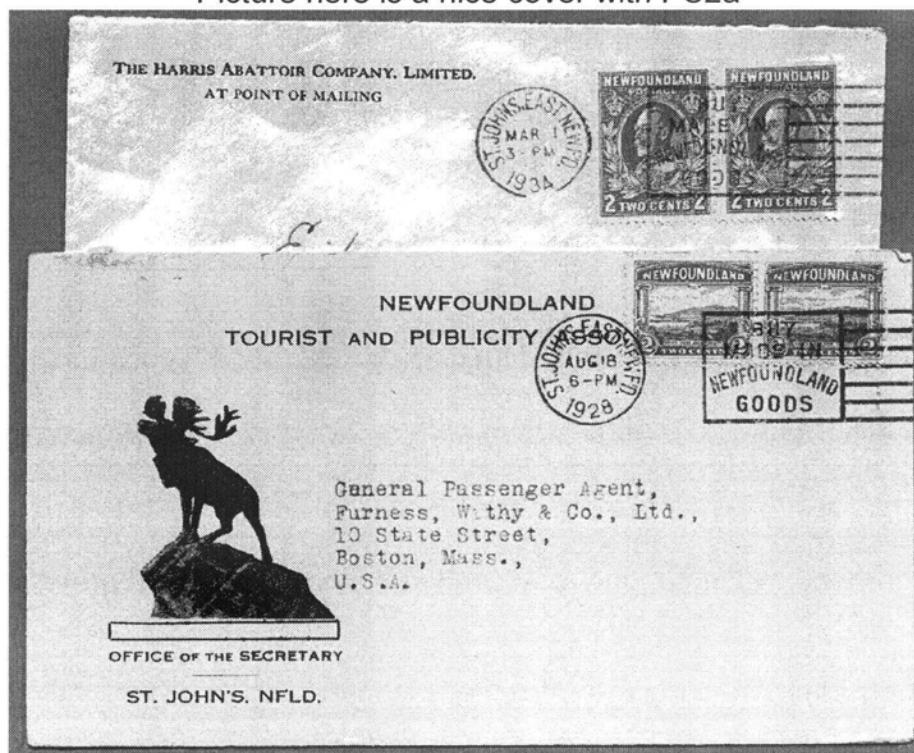
*November/December 2007*

**NEWFOUNDLAND SLOGAN CANCELS Part III (Concluded) - George McGowan**

Thus, there were at least two cancels. Looking at PS2b closely, I have several examples, all with the circle of the hub complete and undamaged until mid 1929, then, every example I have after has the circle damaged (under the date). This leads me to believe that St John's East only had one PS2 for the full run of this slogan. Now for another conundrum, NSSC list PS2b as "hub dater has curve under Time". I have many more examples that do not have the curve, and my observation is that the curve doesn't appear until late 1933. As I stated in Pt 1, the more we look at these cancels, the more questions are raised, and your comments are more than welcome.



Picture here is a nice cover with PS2a



Here are two examples of PS2B, with and without hub damage and with/without the curve.



**THE NEWFIE NEWSLETTER  
OF THE NEWFOUNDLAND STUDY GROUP OF BNAPS**

**Number 127**

**November/December 2007**

**NEWFOUNDLAND POSTAL HISTORY JANUARY 1857- JUNE 1893 – COLIN LEWIS**

Page  
126

Algeria

Single Letter Rate 5 Cents Per ½ Ounce



Fortune November 6<sup>th</sup> 1894 St. John's November 19<sup>th</sup> 1894 Glasgow November 28<sup>th</sup> 1894 Calais A Paris TPO November 29<sup>th</sup> 1894  
Japan

Triple Registered Letter Rate 20 cents per 1½ Ounces



St. John's December 18<sup>th</sup> 1897 Liverpool January 1<sup>st</sup> 1898 London January 1<sup>st</sup> 1898  
Note: The earliest recorded cover to Japan.

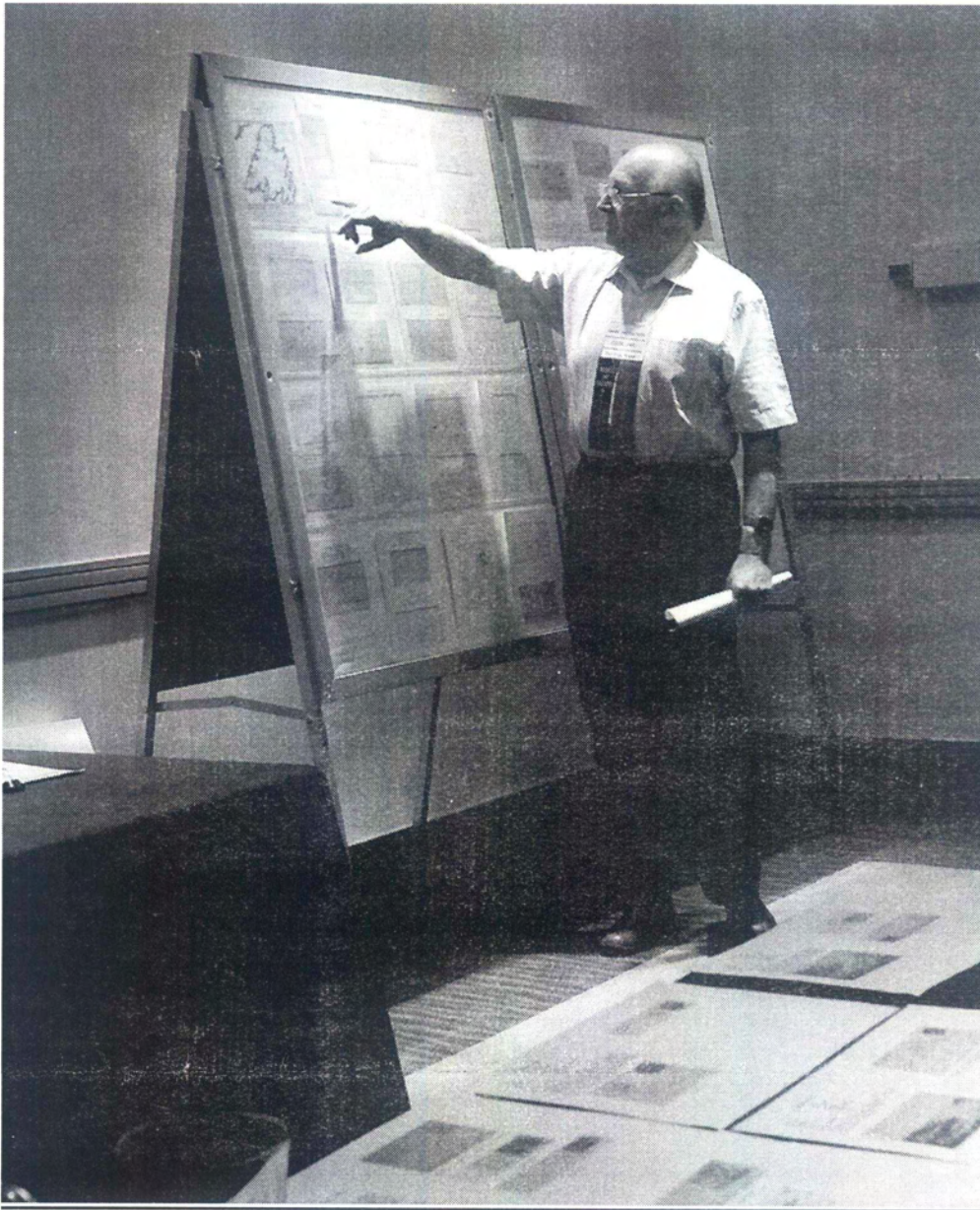


*THE NEWFIE NEWSLETTER  
OF THE NEWFOUNDLAND STUDY GROUP OF BNAPS*

*Number 127*

*November/December 2007*

**NEWFIE WORKSHOP AT BNAPEX 2007 – A SUCCESS! - The Editor**



Above, we see Colin Lewis during his excellent presentation *Pre-stamp Mail to, from and about Newfoundland 1699-1856*. Colin described 64 pages of mail. Fourteen people attended, which is excellent for a BNAPEX workshop. One of the attendees pledged to soon become a new group member.

I have been involved with Charles Livermore in a project to get back issues of our newsletters on the BNAPS website ([www.bnaps.org](http://www.bnaps.org)). Livermore has completed the scanning. He asked the group's permission to allow the newsletters to be made available. The group agreed, with the proviso that newsletters from the past five years will not be shown. Soon, one will be able to read all Newfie Newsletters from #1-#97 on the website.

**THE NEWFIE NEWSLETTER**  
**OF THE NEWFOUNDLAND STUDY GROUP OF BNAPS**

**Number 127**

**November/December 2007**

**EMIL REINHARDT KRIPPNER – SEARCH FOR COVERS – Colin Lewis**

A number of researchers worldwide are looking into the philatelic background of the German, once convicted philatelic faker Emile Reichardt Krippner, who from the late 1890's to about 1903 was domiciled in St. John's Newfoundland. During his stay at St. John's he sent quite a volume of correspondence, mostly to Germany. Some of the letters and postal stationery cards were to his wife Frau (or "Mrs") Helene (or "H") Krippner at Altendorf whilst others were to philatelic contacts, some of whom were not of high repute. He may have been in contact with forgers of postmarks on classic stamps of various Germanic and European postal administrations. I am not aware that he carried out any illegal activity on Newfoundland stamps or covers but this cannot be ruled out.

The reason for this short article is to solicit copies of any Krippner items members might have in their collections. You may ask how does one know - well fortunately, Krippner had a distinctive style of handwriting making it reasonably easy to identify his correspondence. If the item is a postal stationery card there is the signature to go by, but beware he did not always sign by his surname. There are instances where the signature reads R. Reichardt or simply R. Sometimes he quotes P.O. Box No. 481 in the correspondence. He often used fancy stylized methods on his registered correspondence. The card on the next page was sent to Frau Krippner in February 1900 and is an example of his handwriting. The reverse of another card sent to Ernst Hahner at Apolda is also copied. This is written in German and roughly translates:

"I request the immediate 'unfranked' postal return of the stamps sent you on 27 July, as up to today I have received from you neither the desired approval books nor a reply". Respectfully R. Reichardt St. John's N.F. 11 Nov 99 P.O. Box 481. Was he up to some mischievous activity?

If you think you have a Krippner cover or postcard I would appreciate a scan of the item and it can be sent to me at [colindlewis@hotmail.com](mailto:colindlewis@hotmail.com) I will acknowledge receipt and advise if it is or is not a Krippner item. The findings of the research will likely be published in a German publication "Philatelie" whilst an article will also appear later in "The Collector's Club Philatelist".

Colin D. Lewis, Swansea U.K.

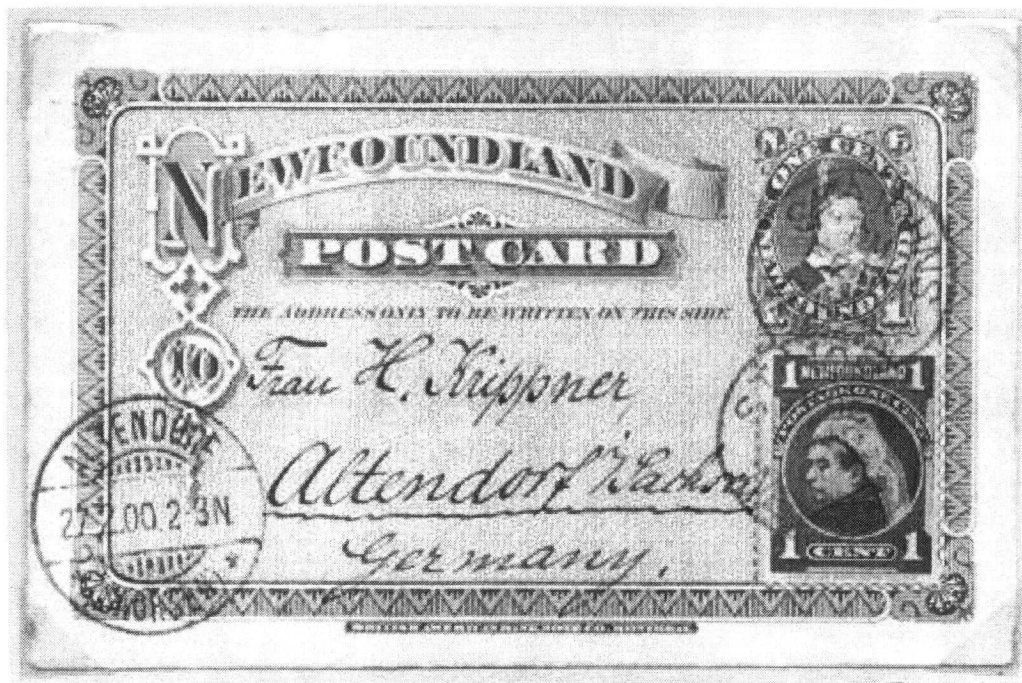


THE NEWFIE NEWSLETTER  
OF THE NEWFOUNDLAND STUDY GROUP OF BNAPS

Number 127

November/December 2007

EMIL REINHARDT KRIPPNER – SEARCH FOR COVERS (Concluded) C. Lewis



Krippner card to his wife

Herrn Ernst Kähler, Apolda Thür.  
 Bitte nur ungefähre, unfrontierte  
 Rückantwort zu Ihnen am 27. July'01.  
 gefanten Marken, da bei Ihnen von  
 Ihnen auch die gesammelten Lauffaffen  
 auf ihre Antwort antwort.  
 Aufh. Kähler  
 St. Johns, N.F.  
 11.11.99.  
 R. Reichardt  
 P.O. Box: 481.

"Reichardt" was E. R. Krippner's middle name. This is a handwriting sample

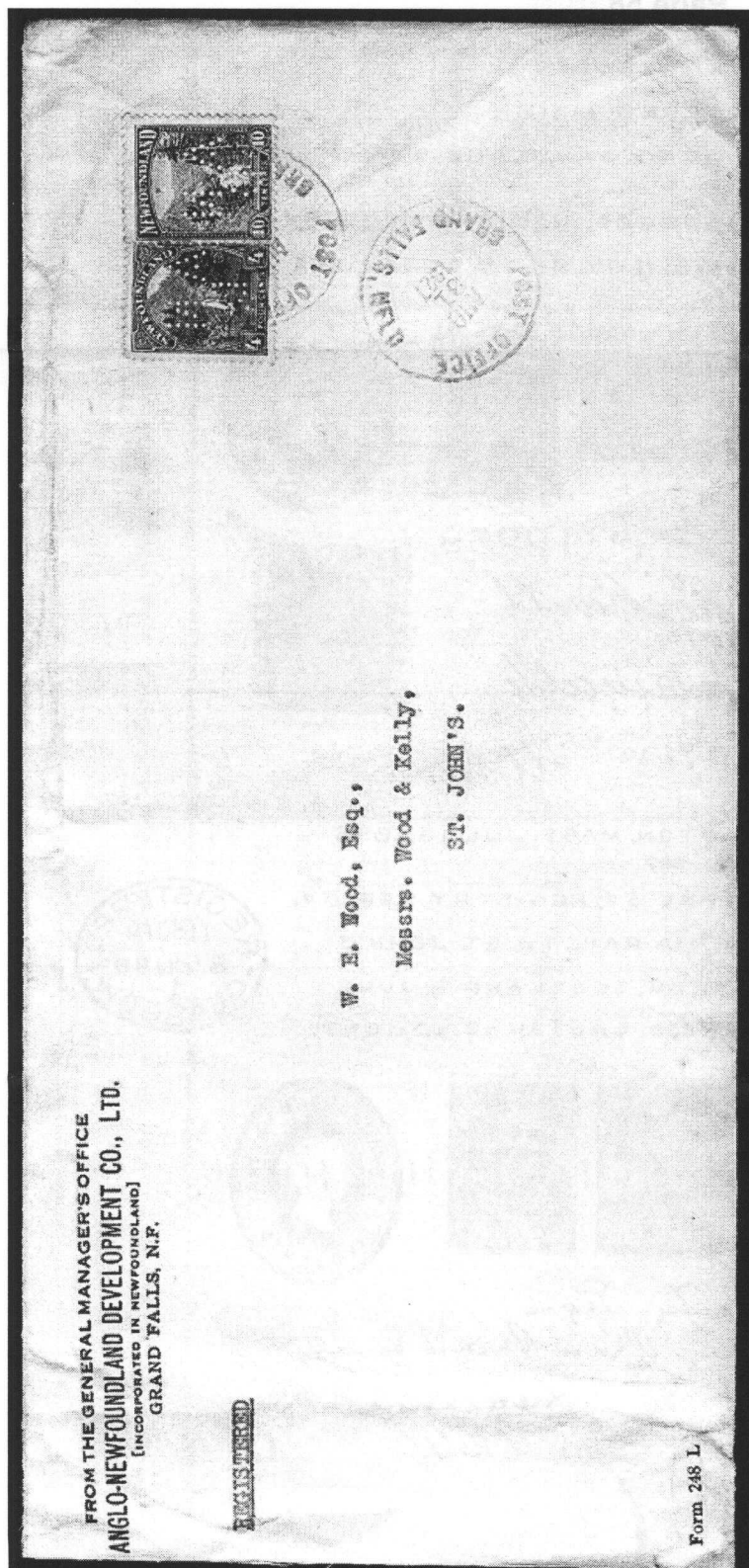


**THE NEWFIE NEWSLETTER  
OF THE NEWFOUNDLAND STUDY GROUP OF BNAPS**

**Number 127**

**November/December 2007**

**The perfin corner by Barry Senior**



This cover is a recent find from a local law office. It is one of the few Registered Perfin covers [AND] I have seen from Nfld and was sent to company lawyers in St. John's. Registration would have been five cents and the single inland letter rate was three cents and two cents for each additional ounce, so this would have been a quadruple rate....Apart from a couple of wrinkles this is a beautiful cover.

**THE NEWFIE NEWSLETTER**  
**OF THE NEWFOUNDLAND STUDY GROUP OF BNAPS**

Number 127

November/December 2007

**NEWFOUNDLAND'S POSTAL STATIONERY 1873-1941 – Horace Harrison**

Page 58

