

**THE NEWFIE NEWSLETTER
OF THE NEWFOUNDLAND STUDY GROUP OF BNAPS**

Number 126

September/October 2007

EDITOR'S COMMENTS

THIS ISSUE

- Page 2- Gone But Not Forgotten, Page 17 – Carl Munden
Page 3-4 Is This the Earliest Known Usage of Scott #44? - Editor
Page 5- Newfoundland Postal History January 1857- June 1893
Page 125 – Colin Lewis
Page 6-7- Newfoundland Slogan Cancels Part II – George McGowan
Page 8- The Perfin Corner – Barry Senior
Page 9- Newfoundland Postal Stationery 1897-1941, Page 57 – Horace Harrison
Page 10- Group Report and Dues Notice – Martin Goebel



HARDCOPY SET OF NEWFIE NEWSLETTERS AVAILABLE

As a result of a project of Charles Livermore which will eventually allow on-line access to group newsletters I copied issues #1-113 for him (with color pages). #1 came out in July/August of 1985 with the #113 from July/August 2005. I'd like to sell this set to a group member for reference material. The challenge is getting it to the willing buyer! While there is Parcel Post in the U.S. for this nine pounds of newsletter for about \$5, sending it to Canada (and probably the U.K.) runs about \$26! The income would go the group treasury and help pay for having two pages in color each issue rather than just one. Price is \$75 U.S. for the set + postage. I'm driving to BNAPEX2007 and could truck them there at no extra cost if a willing buyer plans to attend. Contact me at the email address below or call me at (707)763-2934. There are two-three pages missing but those were probably never sent as they don't exist in the master files. Only one set is available so first buyer gets all.

NEWFIE WORKSHOP AT BNAPEX2007 – REMINDER

Saturday, September 1, from 4-5:30 P.M. Colin Lewis will give a presentation "Pre-stamp mail to, from and about Newfoundland 1699-1856." There is also time for other speakers presenting research or group business items.

DUES ARE DUE!

Please see Page 10 that our treasurer, Martin Goebel, has labored upon. He is gathering dues for the 2007-2008 year.

The British North America Philatelic Society
The Society for Canadian Philately



MAIN | about BNAPS | what's NEW | publications | contact us | join

Visit the BNAPS website at www.bnaps.org.

Chairman/Editor: Norris (Bob) Dyer, 1708 Granada Court, Petaluma, Ca 94954 nrdyer@comcast.net
Treasurer & Circulation: Martin Goebel, 13 O'Mara Place, St. John's, NL, A1A 5B7 goebel@nf.sympatico.ca

**THE NEWFIE NEWSLETTER
OF THE NEWFOUNDLAND STUDY GROUP OF BNAPS**

Number 126

September/October 2007

Page 17

GONE BUT NOT FORGOTTEN – CARL MUNDEN

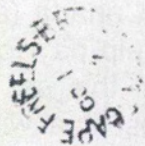
CAPE ISLAND

Open 1910 Closed Jan. 31, 1953 Population 120



CAPE FREELS

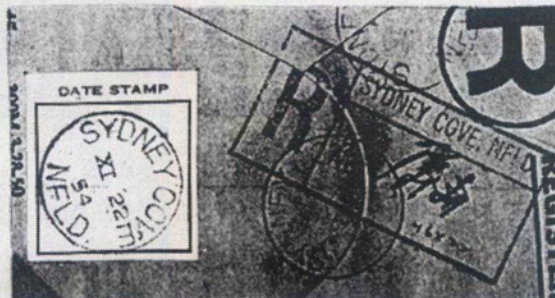
Open as a way office Apr. 1885. Became a post office 1891. Closed
May 31, 1968. Population 219



*Newfoundland Butter Co
St John's
N. F. L. D.*

SYDNEY COVE

Open 1927 Close 1931 Reopen under Canada administration Jan.
2, 1952 Close Jul. 4 1956 Earlier Population 106



THE NEWFIE NEWSLETTER
OF THE NEWFOUNDLAND STUDY GROUP OF BNAPS

Number 126

September/October 2007

IS THIS THE EARLIEST KNOWN USAGE OF SCOTT #44? - The Editor

I bought the item below from an eastern dealer in June. It is a newspaper wrapper from St. John's to Bavaria with a receiver of **MAR 22 88**. The first one-cent green Edward stamp came out in January, 1888. I had recorded 208 covers but not one from 1888. Had I struck gold? Look at the Edward stamp, however – do you see anything troubling? I told the dealer I wanted to send it in for an opinion. I choose Sergio Sismondo. His evaluation is on the next page.



THE NEWFIE NEWSLETTER
OF THE NEWFOUNDLAND STUDY GROUP OF BNAPS

Number 126

September/October 2007

SISMONDO EVALUATES THE WRAPPER SHOWN ON PAGE 3 - The Editor

Sergio Sismondo

Philatelic Expert
Syracuse, New York & Ottawa, Canada

Syracuse, New York, 2007.07.06.

Warning - please read carefully.

NEWFOUNDLAND, 1888.

I have examined the large fragment of a newsprint wrapper sent from St. John's Newfoundland to Rohr, Bavaria, franked with three postage stamps of Newfoundland, "Seal" 5c dark blue, "Cod Fish", 2 cents yellow green, and "Prince Edward VII" 1 cent deep green, perforated 12, on medium white wove paper without watermark, Scott Catalogue #54, 46, 44, each stamp cancelled by a seven parallel bars obliterator, with the transit postmark on reverse (flap) "ABENBERG / 22 MAR / 6-7 m / 88", and arrival of "ROHR / 22 MAR / 8-9 p. / 88", and no other postal marking, a colour reproduction of which is on the reverse side of this certificate, reduced to 65% of true size, and am of the opinion that:

(1) The fragment of wrapper did travel between Newfoundland and Rohr, Bavaria, in 1888. (2) There is no credible information regarding what the contents of the wrapper might have been, or what the postage rate paid might have been. (3) The 2c and 5c stamps originated on this wrapper and are tied to it by the sixth and seventh bars of the obliterator in each case. (4) This fact does not give any indication whatsoever regarding what the wrapper carried or what other postage might have been affixed to it. (5) The 2c and 5c postage stamps were lifted by soaking with water, and later re-affixed in precisely their original positions. (6) While the stamps were taken off, the wrapper was cleaned, reducing oxidation stains, acidity damage and toning. (7) The 1 cent stamp did not originate on this wrapper, neither in its present position, nor in any other position; and the 1 cent stamp had been hinged before being affixed to this wrapper. (8) The ink in the cancellation on the 1c stamp is from a different ink pad, with different chemistry, than the ink for the cancellations on the other two stamps. (9) The tie between the 1c and 2c stamps has been faked by prolongation of three bars of the cancellation. (10) The arrival postmark of Rohr is underneath the 1c stamp, a fact which is inconsistent with normal post office practice and with the current condition of the 1c stamp. (11) There are glues of four different types and compositions present: (a) the original glue which holds the flap of the fragment together with the rest; (b) the original glue of the 2c and 5c stamps; (c) a light coloured glue with which the 2c and 5c stamps were re-affixed after soaking; and (d) a fourth, more brownish and opaque glue with which the 1c stamp was affixed.

Sergio Sismondo.

Sergio Sismondo
AMERICAN HELVETIA PHILATELIC SOCIETY • AMERICAN PHILATELIC CONGRESS • AMERICAN PHILATELIC SOCIETY • AMERICAN SOCIETY OF POLAR PHILATELISTS • AMERICAN STAMP DEALERS ASSOCIATION • ASSOCIAZIONE FILATELISTI ITALIANI PROFESSIONISTI • AUSTRALIAN STATES STUDY CIRCLE • BRAZIL PHILATELIC ASSOCIATION • BRITISH CARIBBEAN PHILATELIC STUDY GROUP • BRITISH NORTH AMERICA PHILATELIC SOCIETY • CANADIAN PHILATELIC SOCIETY OF GREAT BRITAIN • CANADIAN STAMP DEALERS ASSOCIATION • CEYLON STUDY CIRCLE • CHAMBRE S. FRANCAISE de NEGOTIANTS ET EXPERTS EN PHILATIE • CHINA STAMP SOCIETY • COLLECTORS CLUB OF NEW YORK • COPAPHIL • DISINFECTED MAIL STUDY CIRCLE • FRANCE AND COLONIES PHILATELIC SOCIETY • HELLENIC PHILATELIC SOCIETY OF AMERICA • INTERNATIONAL SOCIETY FOR JAPANESE PHILATELY • INTERNATIONAL SOCIETY FOR PORTUGUESE PHILATELY • IRAN PHILATELIC STUDY CIRCLE • ITALY AND COLONIES STUDY CIRCLE • MOROCCO & TUNISIA PHILATELIC SOCIETY • NATIONAL STAMP DEALERS ASSOCIATION • OTTOMAN AND NEAR EAST PHILATELIC SOCIETY • PHILATELIC TRADERS SOCIETY • P.S.G. SOUTHERN AFRICA • POLAR POSTAL HISTORY SOCIETY OF GREAT BRITAIN • POSTAL HISTORY FOUNDATION • ROSSICA • R.P.S. CANADA • ST. HELENA, ASCENSION and TRISTAN da CUNHA PHILATELIC SOCIETY • SCANDINAVIAN COLLECTORS CLUB • SCHWEIZERISCHE VEREINIGUNG FÜR POSTGESCHICHTE • SOCIETY OF AUSTRALASIAN SPECIALISTS • SOCIETY FOR THAI PHILATELY • UNIONE FILATELICA LOMBARDA • UNITED STATES PHILATELIC CLASSICS SOCIETY • WEST AFRICA STUDY CIRCLE • WESTERN AUSTRALIA STUDY GROUP

So there it is. I returned the item. These stamps were common for the period. Why would someone do this? Does a faker out there know I am looking for an 1888 usage? Unlikely, but...

THE NEWFIE NEWSLETTER
OF THE NEWFOUNDLAND STUDY GROUP OF BNAPS

Number 126

September/October 2007

NEWFOUNDLAND SLOGAN CANCELS - George McGowan
Part II

Some comments on Part One. First, my apologies to our Editor, I did not proof my copy very well and sent Bob a few mistakes. Fortunately, he caught most of them; however, the description going with the figures should have read as follows:

Inception until early Dec 1911 has a D (Figure 1)
Early Dec 1911 until summer 1917 has an R (Figure 2)
Summer 1917 until about 1925 has a C (Figure 3)

Secondly, I received very nice a message, via Bob, from Jim Luetje and it appears that he has similar interests and has studied the Slogans to a greater extent than I have. Jim also reports that he has a single example of the code "T" dated Oct 12, 1916, the only one he has seen. Jim also noticed another typo I made, that being the use of the code "C" ended around 1925, not 1935 as I erroneously stated (corrected above).

The First Slogan cancel, "**Food / will / win the war / don't waste it**" appears in early Feb 1918 and is discontinued early in 1919. There are two distinct cancels, one having only killer bars, and one having #2 in the killer bars, (They are PS1 and PS1a in the NSSC). PS1 has a reported EKU of Feb 6, 1918 and a LKU of Jan 3, 1919 and PS1a similarly has Feb 6, 1918 for its EKU but goes until Feb 1, 1919 for its LKU.

Since there exists examples of both PS1 and PS1a canceled on the same day, (Feb 6, 1918 -Mar 20, 1918 -Sept 18, 1918 to cite a few) we can safely say that two machines were being used simultaneously. It appears that there are fewer examples of PS1a leading me to speculate that PS1a was used only when the mail traffic was heavy.

We will see in the NSSC that there is a reference to a "curve" in the hub, under the time, specifically PS2, PS3, PS4 and PS6. I have examples of PS1 and PS1a with and without this "curve." Since they appear with and without throughout the approximately one year period, we can assume that the curve didn't get damaged at some specific date. I can only speculate that it was occasionally and randomly left out. The hub was not only changed daily, it was changed hourly, sometimes on the half hour, so they received a lot of handling. I am not versed in the details of the hub, but can only guess that they were like letterpress type, where numeral and letter characters were changed as needed.

So some questions come to mind:

Why was the "curve" left out occasionally?
Why do we give a sub heading letter to the curve in PS2, PS3, PS4, and PS6 and not PS1?

I would like to hear from anyone who can shed some light on this first slogan, and any comments. My email is geolotus2003@nycap.rr.com

Illustrated on the next page are two examples of PS1, with and without the curve, (Figure 1) and two examples of PS1a, with and without the curve, (Figure 2).

George McGowan
PO Box 482
East Schodack, NY
12063-0482
USA

SEE NEXT PAGE FOR PS1 FIGURES

**THE NEWFIE NEWSLETTER
OF THE NEWFOUNDLAND STUDY GROUP OF BNAPS**

Number 126

September/October 2007

NEWFOUNDLAND'S SLOGAN CANCELS PART II (Concluded)

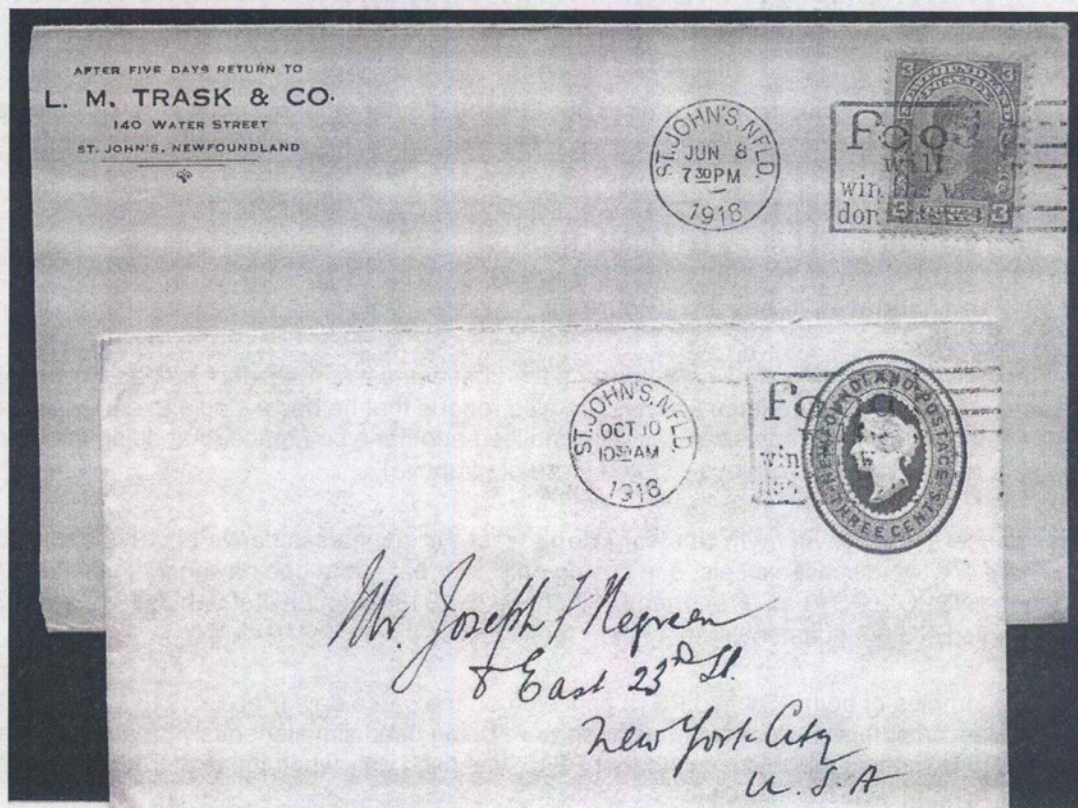


Figure 1. PS1 with and without "curve" in the hub, under the time

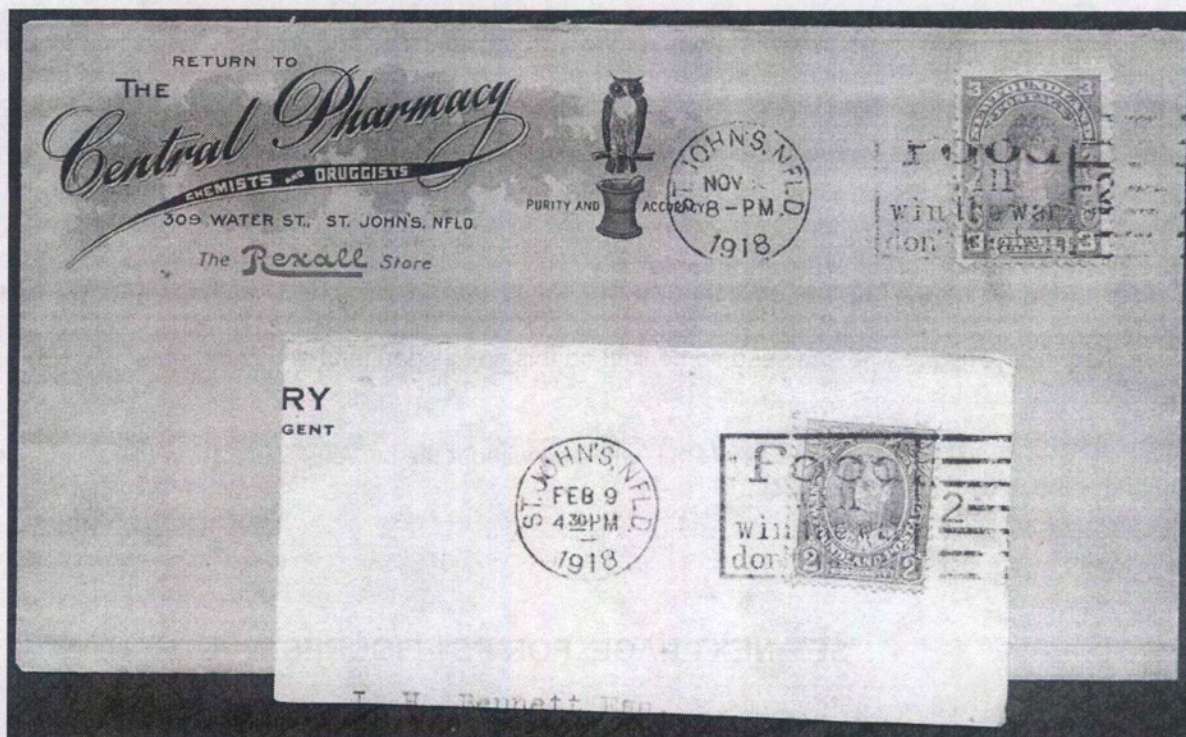


Figure 2. PS1a with and without "curve" in the hub, under the time

**THE NEWFIE NEWSLETTER
OF THE NEWFOUNDLAND STUDY GROUP OF BNAPS**

Number 126

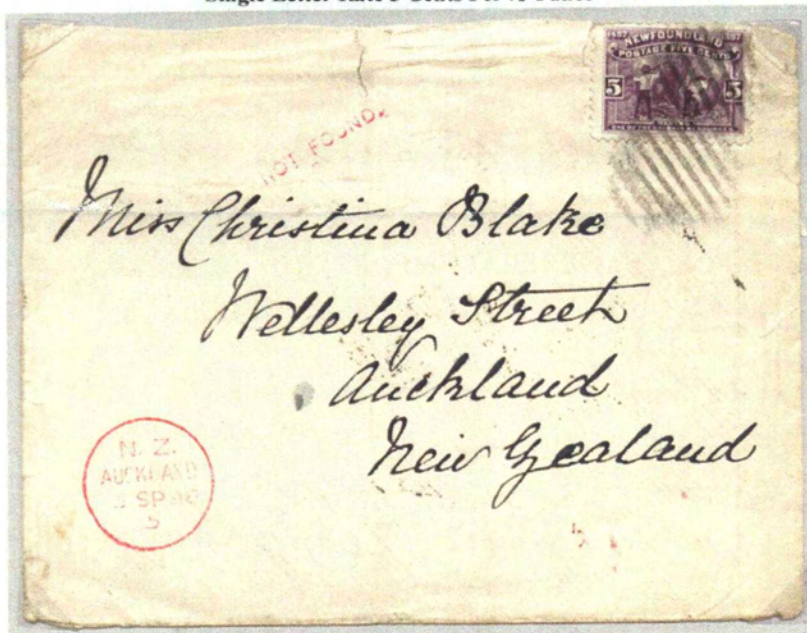
September/October 2007

NEWFOUNDLAND POSTAL HISTORY JANUARY 1857- JUNE 1893 – COLIN LEWIS

Page
125

New Zealand

Single Letter Rate 5 Cents Per ½ Ounce



St. John's March 12th 1898
Vancouver March 24th 1898
Auckland May 7th 1898
Auckland September 5th 1898
N.Z. D.L. Office September 14th 1898
Note: Instructional mark "Not Found".

Single Registered Letter Rate 10 Cents Per Ounce



St. John's August 11th 1894
Glasgow August 18th 1894
London August 19th 1894
Auckland October 5th 1894

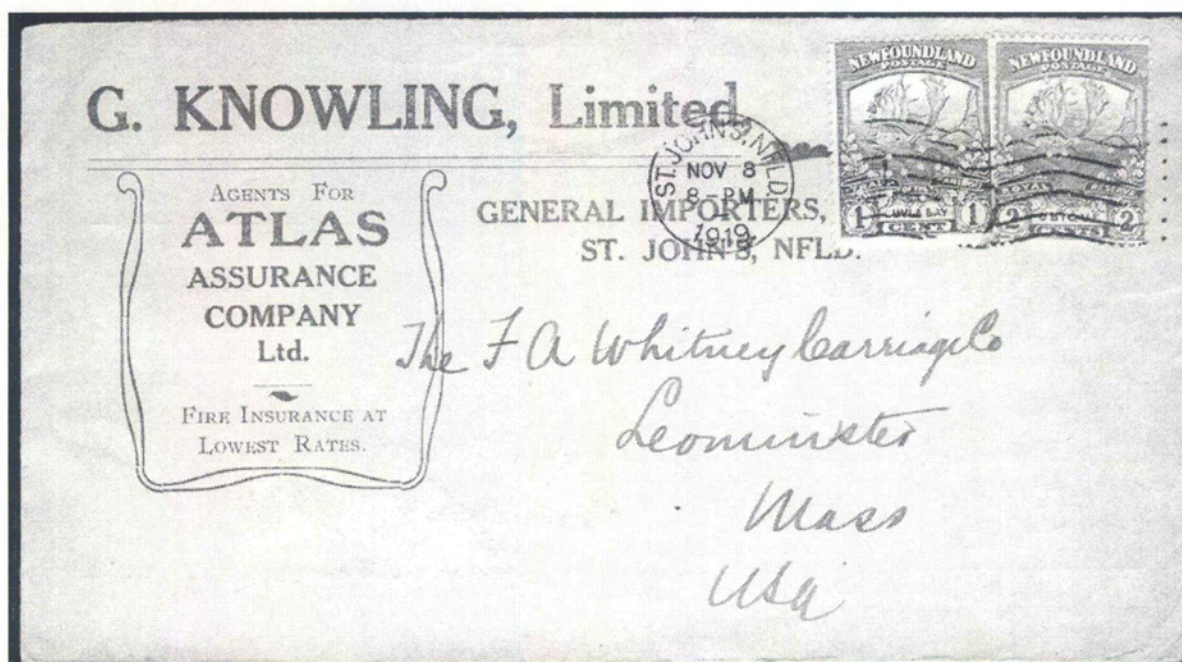
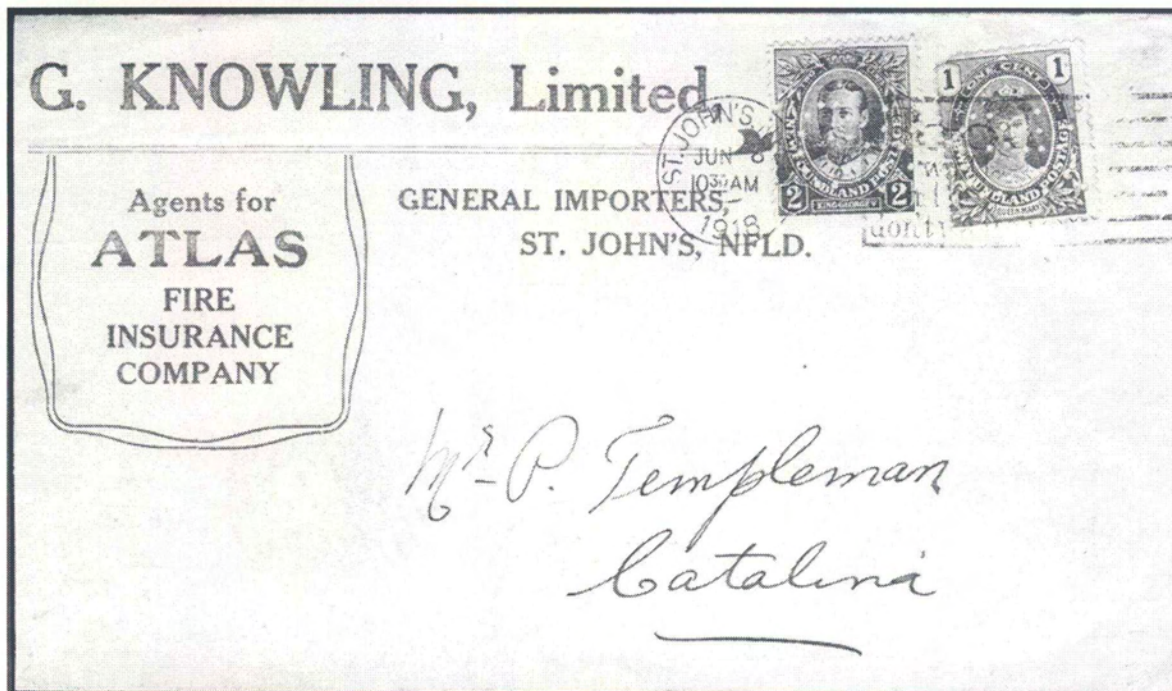
THE NEWFIE NEWSLETTER
OF THE NEWFOUNDLAND STUDY GROUP OF BNAPS

Number 126

September/October 2007

The perfin corner by Barry Senior

GK perfins on these two covers from G. Knowling. Both pay the two-cent rate to the U.S. plus the one-cent war tax. The top one was several weeks after the tax went into effect and includes the low values of the then current 1911 Royal Family set. The bottom cover from 1919 has the low values of the Caribou set which came out at the beginning of that year.



THE NEWFIE NEWSLETTER
OF THE NEWFOUNDLAND STUDY GROUP OF BNAPS

Number 126

September/October 2007

NEWFOUNDLAND'S POSTAL STATIONERY 1873-1941 – Horace Harrison

Page 57



**THE NEWFIE NEWSLETTER
OF THE NEWFOUNDLAND STUDY GROUP OF BNAPS**

Number 126

September/October 2007

Financial Statement as of August 15, 2007

	Item	Debit	Credit
Aug 15, 2006	Balance Forward from Previous Year		\$579.26
	BNAPS Stipend		104.00
	63 Membership dues (7 memberships were paid in advance in 2005/2006)		836.06
	2 Membership dues paid in advance		26.00
	Newsletter Reimbursement		156.00
	Donations		78.49
	Service Charges (Cheques, etc.)	11.40	
	Newsletter Postage (6 issues)	485.24	
	Paper and Copying	713.81	
	Misc. Stationary and Postage	9.11	
	Totals	\$1,219.56	\$1,200.55
Aug 15, 2007	Balance on hand		\$560.25

----- ✂ -----
Membership Application / Change of Information Form
----- ✂ -----

If your dues are currently paid through 2007-2008, no payment is required at this time.

BNAPS Newfoundland Study Group			
Name:	<u>BNAPS Historian - Complementary</u>		
Address:	_____		

Postal Code:	_____	E-Mail:	_____
Telephone:	(Home): _____	(Office):	_____
Annual dues:	\$13.00 (Canadian Dollars)		
	\$13.00 (US Dollars)		
	£7.00 (British Pound)		
<p>Please make your cheque or money order payable to: BNAPS Newfoundland Study Group care of the Treasurer Martin Goebel, 13 O'Mara Place, St. John's NL A1A 5B7, Canada Goebel@nf.sympatico.ca</p>			
<p><i>All new members are requested to kindly remit a copy of this form for our accounting and mailing. Thank you!</i></p>			