

**THE NEWFIE NEWSLETTER**  
**OF THE NEWFOUNDLAND STUDY GROUP OF BNAPS**

---

**Number 124**

**May/June 2007**

**EDITOR'S COMMENTS**

**THIS ISSUE**

- Page 2- Patriotic Material – Some Answers – Dean Mario  
Page 3- More on Belle Isle – Kevin O'Reilly  
Page 4- Why the Dual Country Franking? – Another Answer  
Chris Hargreaves  
Page 5- Newfoundland Postal History January 1857- June 1893  
Page 123 – Colin Lewis  
Page 6- New BNAPS book on Labrador reviewed – The Editor  
Page 7- Gone But Not Forgotten, Page 15 – Carl Munden  
Page 8- Rev. E. A. Butler – Earliest Price List? – The Editor  
Page 9- The Perfin Corner – Barry Senior  
Page 10 - Newfoundland Postal Stationery 1897-1941, Page 55 – Horace Harrison



---

**NEWFIE WORKSHOP AT BNAPEX2007** – We will have a workshop in Calgary! Colin Lewis will give a presentation “Pre-stamp Mail to, From and About Newfoundland 1699-1856.” Exact time will be announced in the next newsletter. Hope to see many of you there!

---

**RARE 1937 PERF. VARIETY ON 14¢ DOG** - The Maresch 2-28-07 auction featured the third known 13.2 X 13.2 comb perforation variety on the 14¢ dog. This time it was hammered down at \$8,500. With a 15% commission, this makes the sale price \$9,775. This is a lot of money but less than half what a similar stamp went for in the Victoria sale of 2004 - \$20,700! The fact that two of these have come to market recently could indicate that someone found a multiple and is carefully selling them off to try to keep the price relatively high. Risky investment, in my opinion.

---

**SOTHEBY'S AUCTION ANECDOTES** – You will recall that last year Sotheby's auctioned off one of the best collections of mint Newfoundland seen in many years, owned by Sir Gawaine Baillie. They are obviously not comfortable selling stamps. Initially, they demanded \$250 for shipping three lots to one of our BNAPS members, including one lot with C2/C2 pair which went for \$345, as well as several other lots. That was resolved. Instead of the Alcock pair, however, he found in the bubble wrap a mint Columbia with a certificate, worth probably \$7,000 or so!!! It took Sotheby's 100 days to fix this problem.....They also had given me some trouble before the auction since the catalogue said everything was sold “as is.” I wanted to make certain that if I got the \$1,000+ item I was interested in and found it damaged, that I could return it. That took some phone calls all over the world before I finally found a fellow who reluctantly agreed. I got the stamp and it was not damaged, but still – “as is” for classic stamps?

---

**BUTLER MATERIAL** – I am quite pleased with the response I have received to my request for material on Rev. E. A. Butler. I am now getting close to having enough to start an article for TOPICS. Earliest letter from Butler with corner card was from May 8, 1921. He retired from the stamp business in early 1949, but I am now have a Christmas card he sent in 1952. He died in early 1955, almost 83.

---

Chairman/Editor” Norris (Bob) Dyer, 1708 Granada Court, Petaluma, Ca 94954 [nrdyer@comcast.net](mailto:nrdyer@comcast.net)  
Treasurer & Circulation: Martin Goebel, 13 O'Mara Place, St. John's NL A1A 5B7 [goebel@nf.sympatico.ca](mailto:goebel@nf.sympatico.ca)

**THE NEWFIE NEWSLETTER  
OF THE NEWFOUNDLAND STUDY GROUP OF BNAPS**

**Number 124**

**May/June 2007**

**PATRIOTIC MATERIAL – SOME ANSWERS - Dean Mario**

**LABEL 1.**



**LABEL 2.**

[Robin Moore asked for information on the above items in our January/February newsletter. Here are some answers from Dean Mario – The Editor.]

**LABEL 1.**

“The Women’s Patriotic Association was formed [during WW I] to provide funds for entertainment, concerts, and recreational activities for serving men and women from Newfoundland. Proceeds no doubt from the sale of these labels...were used to fund various activities.... Much of the mystery behind this Cinderella label remains. Questions like who printed it, how much did it sell for, when was it made, and how many were printed remains unanswered....” - *Maple Leaves*, October 1997.

Judith Edwards responded:

“I have six unused examples of the label and all have one side imperforate. They were, to my knowledge, printed by Ayre and Sons in St. John’s in sheets of 50; obviously the outer edges of the sheet were imperforate. The numbers printed are not known but we are not talking large numbers. An unused stamp is not that scarce, but one tied to a cover is...” – *Maple Leaves*, January 1998.

**LABEL II**

“I’ve recently found an enlightening entry within the 25 January 1940 Newfoundland Post Office Circular:

**‘Women’s Patriotic Association Labels**

In order to raise funds the Women’s Patriotic Association has put on sale adhesive labels approximately the same size as postage stamps. It is possible that some members of the public are of the opinion that these labels may be used for the prepayment of postage and may post letters bearing these adhesive labels only...postage stamps only are acceptable for the prepayment of postage...no labels of any kind, other than labels authorized by the Post Office and postage stamps may be placed on the address side of an envelope or card tendered for postage.” - *Maple Leaves*, July 2006.

**THE NEWFIE NEWSLETTER  
OF THE NEWFOUNDLAND STUDY GROUP OF BNAPS**

**Number 124**

**May/June 2007**

**MORE ON BELLE ISLE – Kevin O'Reilly**

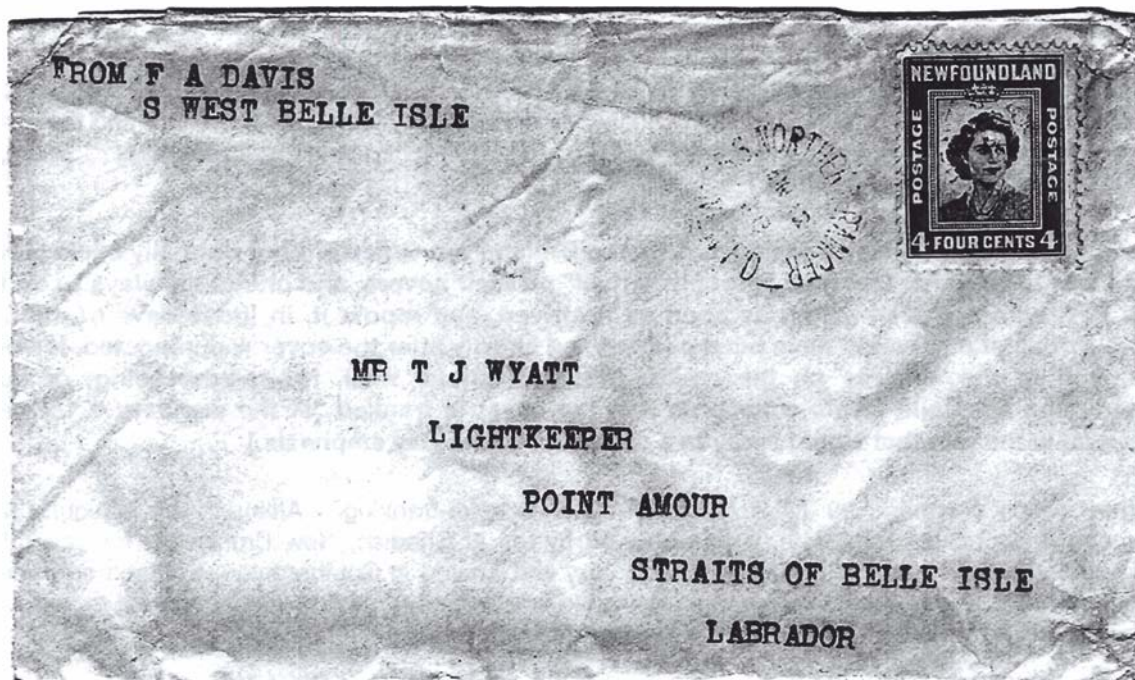
[Kevin is responding to Carl Munden's postmark from Belle Isle in the September-October newsletter. Kevin is the expert on the postal history of Labrador. See elsewhere in this newsletter a description of his new BNAPS book --The Editor]

I was looking through my September-October 2006 Newfie Newsletter and re-read Carl Munden's interesting series 'Gone But Not Forgotten'. Carl has some text for the post office at Belle Isle but it was actually located on Belle Isle at the eastern entrance to the Straits of Belle Isle between the Labrador coast and the island of Newfoundland.

Canada built two lighthouses on Belle Isle on the south side in 1858 and on the southwest corner in 1880 to aid navigation into the St. Lawrence River. A radio station was added to the southwest Belle Isle complex in 1904. Another lighthouse was built on the northeastern end of Belle Isle in 1905.

The sender of the cover in the attached scan, Frederick Augustus Davis, served as the lighthouse keeper at southwest Belle Isle. My cover was carried out on the SS Northern Ranger on June 12, 1948 and was sent to another lighthouse keeper at Point Amour, Labrador. Davis became postmaster when a Canadian post office opened at Belle Isle on June 18, 1953 and served until his retirement in 1958. The Belle Isle post office opened on June 18, 1953 as a summer office, although it had been proposed a year earlier for the northeastern lighthouse station but the SS Kyle would not stop there to let the postal equipment off. On June 15, 1963 the post office was made a permanent year-round operation but closed on October 19, 1968 as the radio station was to be closed the following year. Belle Isle operated as a non-accounting post office assigned the number 53076.

I hope this may be of some interest.



**THE NEWFIE NEWSLETTER**  
**OF THE NEWFOUNDLAND STUDY GROUP OF BNAPS**

**Number 124**

**May/June 2007**

**WHY THE DUAL-COUNTRY FRANKING – ANOTHER ANSWER - Chris Hargreaves**

[Here is yet another response! Chris talks about this cover Joe Schlitt wondered about in our January- February newsletter - The Editor.]



This looks like a First Flight Cover, from Pan American's inaugural flight on its Northern Trans-Atlantic route, that was re-stamped and re-mailed on arrival in England, in order to get official / Post Office confirmation of it's time of arrival.

The Botwood postmark dated June 24th 1929 is one often found on FFCs for this flight, which is listed as #3921h in The Air Mails of Canada and Newfoundland. Aerophilatelists often used unusual stamps to embellish their covers. - This would explain the use of the two Nwf 211 stamps, even though "the air mail stamps had been overprinted to use for land and sea post."

It is strange that there are no routing instructions on the cover. This is unusual. The absence of a First Flight Cachet on this cover is not unusual. - The Newfoundland Post Office did not provide a cachet for this flight, and there are many FFCs from it without a cachet. (There are also many FFCs from this flight with a large green cachet: this was applied by Pan Am to FFCs dispatched through its office.)

The absence of a backstamp is also not unusual, as the British Post Office did not normally backstamp FFCs. However, a number of collectors wanted "proof of arrival" on their covers, and one of the ways to do this was to reframe the FFC with a British stamp as soon as it arrived, and repost it. In those days of multiple mail collections, the British stamp would have been postmarked shortly after the cover was reposted. It would then be delivered back to the address on the cover, with the regular mail. No re-addressing, or additional instructions we required. Colin Lewis comments that the cover is franked "at the standard 1 1/2 pence per ounce rate", which is the rate that would apply to a re-posted cover. [My emphasis.]

The date on the London postmark, 29 JU 39, also corresponds to re-franking. - Although the inaugural flight was scheduled to leave Botwood on June 24th, it was delayed by fog at Shediac, New Brunswick, for several days. It actually arrived in Botwood on July 27th, left the same day, and arrived in Southampton, England on June 28th. It would be normal practice for this cover to have been delivered in London the next morning, June 29th, where it looks like it was remailed, and cancelled at 11.45AM that morning.

**THE NEWFIE NEWSLETTER  
OF THE NEWFOUNDLAND STUDY GROUP OF BNAPS**

**Number 124**

**May/June 2007**

**NEWFOUNDLAND POSTAL HISTORY JANUARY 1857- JUNE 1893 – COLIN LEWIS**

Page  
123

Switzerland

Double Letter Rate 10 Cents Per Ounce



St. John's January 24<sup>th</sup> 1899  
Glasgow February 3<sup>rd</sup> 1899  
Basel February 4<sup>th</sup> 1899

Single Registered Letter Rate 10 Cents Per ¼ Ounce

Use of Upated Colonial Postal Stationery Envelope

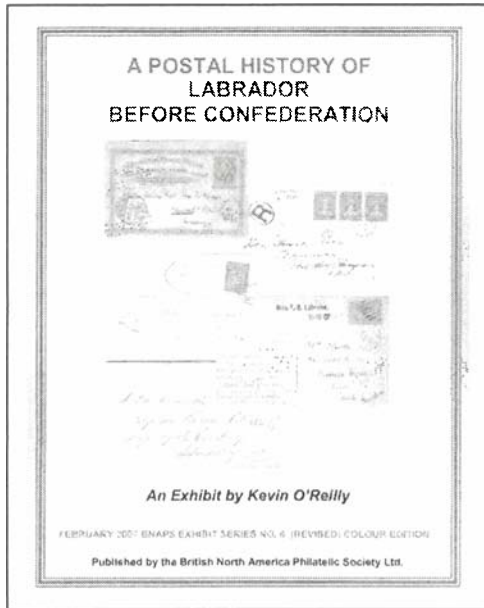


St. John's April 25<sup>th</sup> 1893  
Liverpool May 2<sup>nd</sup> 1893  
London May 3<sup>rd</sup> 1893  
Bern May 4<sup>th</sup> 1893

**THE NEWFIE NEWSLETTER**  
**OF THE NEWFOUNDLAND STUDY GROUP OF BNAPS**

**Number 124**

**May/June 2007**



**A POSTAL HISTORY OF LABRADOR BEFORE CONFEDERATION 2007** by Kevin O'Reilly.

8.5x11, Spiral Bound, 108pp. BNAPS Exhibit Series #6. ISBN978-1-897391-03-7 (B&W), 978-1-897391-02-0 (Colour). Stock # B4h923.6 (B&W) \$C32.95, B4h923.61 (Colour) \$C80.00

.....  
**THE EDITOR**

In 1997, BNAPS published an earlier version of O'Reilly's exhibit as Exhibits Book 6, *in black-and-white*. It was based upon a four-frame exhibit. The new book has 50% more postal history, in effective colour. In other ways the 1997 edition *pales* compared to this one.

Here we see a fusion between what is a classic postal history exhibit and a thoroughly documented book. In most exhibits page descriptions are modest (per rules of exhibiting). Here we can find up to 200-300 words or more of text for each item under the captions:

**Mail Service, Rate, Philatelic Significance, and Historical Significance.** As an exhibit, one might spend 20-30 minutes reviewing six-frames. This book requires much more time but the investment provides insights into not only the postal history of this area but its historical underpinnings. Such lavish details would be frowned upon in a show exhibit.

The 2007 edition includes four pages of detailed information up front with **References** (something, again, more akin to a book or scholarly article). There is also a page about Kevin, himself, in which I am reminded that in 2005 he was one of the ten recipients of the **Queen's Silver Jubilee Medal**, by the Royal Philatelic Society of Canada, for his contributions to the hobby.

For such a large area with such a small population (only 6,000 in 1949) there was/is a lot of philatelic potential. Kevin wisely decided to break the topic into four geographical areas rather than try a simple chronological approach. Covers shown are at the proper rate except for a few exceptions which he correctly notes. They often have wonderful markings. If one is interested in the history of Sir Wilfred Grenfell and his medical mission, or the Moravians, there is fascinating material here. Additional gems include a letter from polar explorer Commander Robert Peary and even an early flight from 1923 (NSSC's FF21 from Cartwright). A lot of the mail bears Traveling Post Office date stamps, but Kevin points out that he has not attempted to present the history of the various TPO's. There is also in-coming mail (e.g. from Germany to the Moravians), as well as military mail- CAPO 10 and APO 677.

The exhibit has obviously been reworked and recently augmented by "new" material. How else can one explain the exact parcel post tag with the three-cent Alexandra on Page 20, which also showed up in last fall's BNAPS Exhibit Book #43 on John Walsh's Royal Family set (Page 61)?

The colour version (albeit \$80.00 less 40% for BNAPS members) is the better choice for postal historians.

Internet orders can be placed at [www.iankimmerly.com/books/](http://www.iankimmerly.com/books/) (Click on the price at the end of the book description and you will be taken to the check out page.) Prices given above are the retail prices in Canadian Dollars. BNAPS members receive a 40% discount from retail prices. Shipping is extra. Credit card orders (Visa, MasterCard) will be billed for exact amount of shipping plus \$2 per order. For payment by cheque or money order, add 10% in Canada, 15% to the US, 20% overseas (overpayments exceeding 25 cents will be refunded in mint postage stamps). GST is payable for Canadian orders. No Provincial Sales Tax applies.

**THE NEWFIE NEWSLETTER  
OF THE NEWFOUNDLAND STUDY GROUP OF BNAPS**

**Number 124**

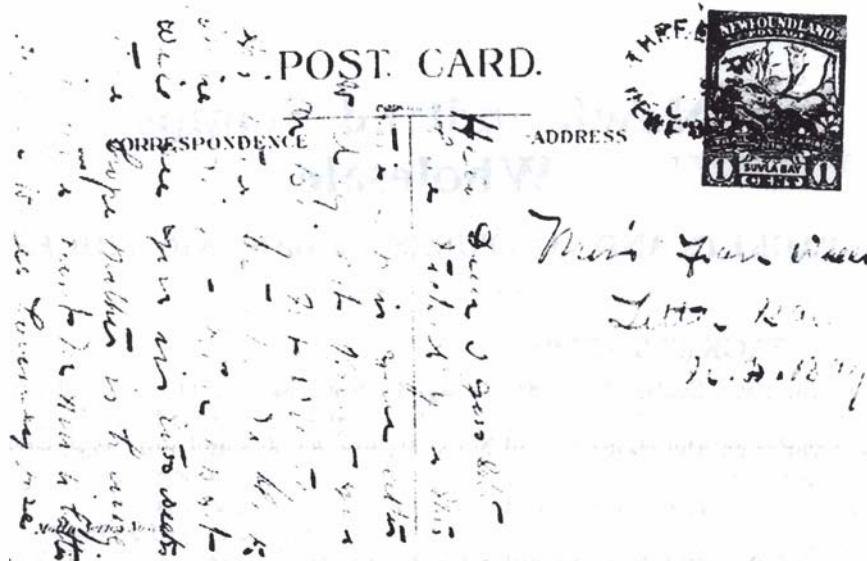
**May/June 2007**

Page 15

**GONE BUT NOT FORGOTTEN – CARL MUNDEN**

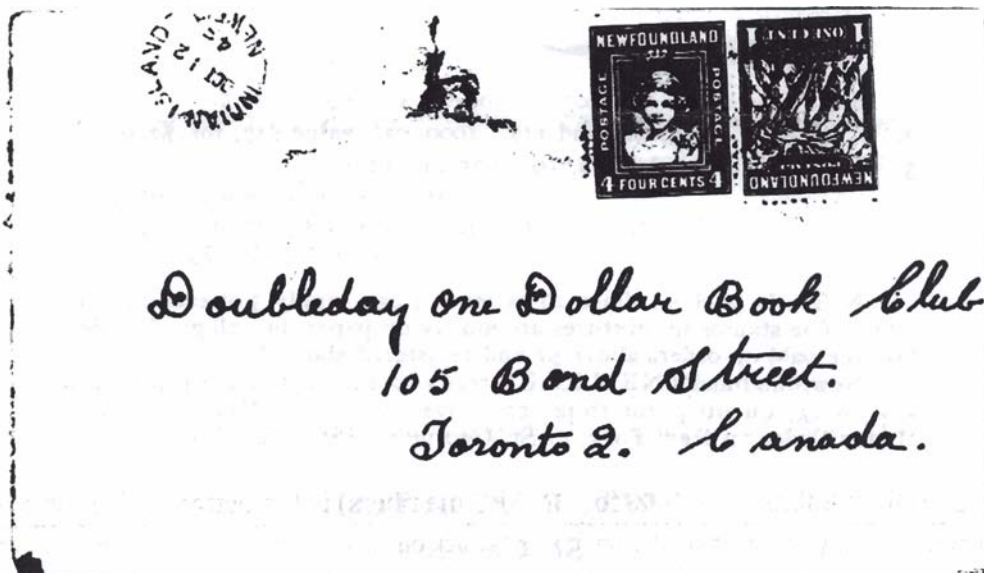
**THREE ARMS**

Opened as a way office in 1886. Became a post office in 1891.  
Closed in 1937 Population 102



**INDIAN ISLAND**

An island off FOGO . Open as a way office May 1889. Became a post  
office 1891 closed Aug. 22, 1959 Population 326



**THE NEWFIE NEWSLETTER**  
**OF THE NEWFOUNDLAND STUDY GROUP OF BNAPS**

**Number 124**

**May/June 2007**

**REV. E. A. BUTLER – EARLIEST PRICE LIST ? - The Editor**

I continue to gather material on the famous Newfoundland clergyman/stamp dealer (or should it be *stamp dealer/clergyman?*) I plan to write a long article on the man for TOPICS in the near future. This wholesale price list was enclosed in an envelope from Butler to the Beacon Stamp Company in Wooster, Ohio, **July 28, 1922**, courtesy Eugene Yount. I believe that Bishop's earliest **retail** price list came out in 1924. So far, I have no copies of any Butler materials prior to May of 1921. Depending upon *his own* conflicting reports he started his business in either 1916 or 1920.

**Newfoundland Stamps**  
**Wholesale**

**PACKETS AND MIXTURES AT BARGAIN PRICES**

**PACKETS** 

- 10 varieties, Scott's No's. 81, 82, 83, 86, 88a, 104, 105, 115, 116 and 117,  
10 of each, cat. value \$2.90 for 30c.
- 15 varieties, the above 10 and No's. 80, 81a, 84, 87a and 119, 10 of each  
cat. value \$5.20 for 75c.
- 20 varieties, the above 15 and No's. 51, 63, 85, 88 and 108  
10 of each, cat. value \$10.20 for \$2.00
- 25 varieties, the above 20 and No's. 61, 62, 66, 87 and 118  
10 of each, cat. value \$19.40, for \$4
- 30 varieties, the above 25 and No's. 78, 79, 87b, 91a and 122  
10 of each, cat. value \$26.70, for \$6.70
- 35 varieties, the above 30 and No's. 45, 46, 47, 52 and 64  
10 of each, cat. value \$37.70, for \$12
- 40 varieties, the above 35 and No's. 39, 42, 45a, 50 and 52a  
10 of each, cat. value \$49.90, for \$16.50

**122 is 10¢  
Caribou**

**50? What  
Was that?**

**MIXTURES** 

**NOTE!**  
**1,000**  
**Stamps**  
**For \$1**

1. Scott's No's 104 and 105—1000, cat. value \$20, for \$1
2. " " 115, 116 and 117 1000, cat. value \$27, for \$2.50
3. " " 81, 83, 88a, 104, 105 and 117—  
1000, cat. value \$24.75, for \$1.50
4. " " 81, 83, 87a, 88a, 104, 105, 115, 116, 117 and 119—  
1000, cat. value \$32.10 for \$3

N.B.— In packets above 20 varieties I can supply 5 of each at same rate. The stamps in mixtures are mostly on paper, but all good copies. Postage paid on orders above \$1 and registered above \$2.

Newfoundland's NEW ISSUE ready soon, and I will supply mint sets, in any quantity, for 10 per cent. over face value. Cash in advance. Money Order on New York, or St. George's, Nfld

**REV. E. A. BUTLER**  
**St. George's**  
**Newfoundland**

**THE NEWFIE NEWSLETTER  
OF THE NEWFOUNDLAND STUDY GROUP OF BNAPS**

**Number 124**

**May/June 2007**

**The perfin corner by Barry Senior**

**1911 Royal Family Issue**

The five lower values of this issue are reported with the AND perfin.  
Of note are the Discovery Copy of the 1 cent in position four as  
well as the 5 cent in position one with only one report.



Position 1



Position 1



Position 1



Position 3



Position 4  
Discovery Copy

A strip of 3 paying  
the 2 cent Letter  
Rate plus 1 cent  
War Tax to the  
USA, January 28,  
1919. This is one  
of two known.

FROM PURCHASING DEPARTMENT  
**Anglo-Newfoundland Development Co., Ltd.**  
INCORPORATED IN NEWFOUNDLAND  
GRAND FALLS, N.F.



**Cranwell, Spoking Company,**  
**Palmyre, N.Y. U.S.A.**

FORM 239S

FROM PURCHASING DEPARTMENT  
**Anglo-Newfoundland Development Co., Ltd.**  
INCORPORATED IN NEWFOUNDLAND  
GRAND FALLS, N.F.



**Messrs. The Norton Co.,**

**Worcester, Mass., U.S.A.**

2 cent Letter rate  
to the USA,  
August 31, 1915.  
This is the only  
recorded usage.

Form 239 S

THE NEWFIE NEWSLETTER  
OF THE NEWFOUNDLAND STUDY GROUP OF BNAPS

Number 124

May/June 2007

NEWFOUNDLAND'S POSTAL STATIONERY 1873-1941 – Horace Harrison

Page 55

