

**THE NEWFIE NEWSLETTER
OF THE NEWFOUNDLAND STUDY GROUP OF BNAPS**

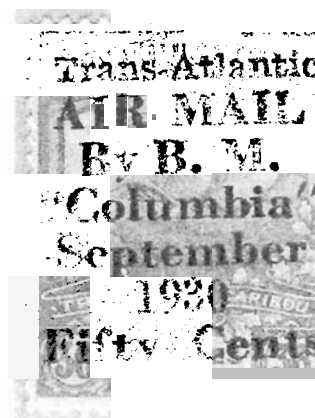
Number 119

July/August 2006

EDITOR'S COMMENTS

THIS ISSUE

- Page 2 **A Black Sheep Reappears - Editor**
Page 3-4 **Gone But Not Forgotten, Pages 8-9 – Carl Munden**
Page 5 **Newfoundland's Postal History January 1857 –
June 1893 - Page 12 - Colin Lewis**
Page 6 **Sotheby's May 10, 2006 Auction - Editor**
Page 7-8 **A Favorite Piece of Newfoundland Postal History –
W. Joseph Schlitt**
Page 9 **1937 Bisects – Legitimate? - Editor**
Page 10 **Newfoundland Postal Stationery 1873-1941, Page 50
– Horace Harrison**



SAMMY WHALEY WINS ROBERT PRATT AWARD FROM COLLECTORS CLUB OF CHICAGO

Sammy has won this year's Pratt Award for his book *Newfoundland: 1865-1879 The New York Printings A Cover Study*. As you know, Sammy's significantly expanded research published by Robert Pratt in 1989. The book covers almost one thousand covers with illustrations of more than 700, many in color. It is fitting that Sammy wins a Pratt Award by updating the famous collectors' work. The award comes with \$1,000. Congratulations, Sammy!!!

CARL MUNDEN WANTS TO TRADE COVERS

TO TRADE – 1 cover with very good strike of Horse Islands NEWF'D CDS. Wants cover with strike of Horse Islands NFLD CDS or Horse Island Split Ring. carl.munden@ns.sympathico.ca.



B. HERRIZBURG
554 Merritt Avenue
Oakland 10, California

KEVIN O'REILLY LOOKING FOR LABRADOR POSTAL HISTORY

Covers, cancels on stamp or piece, TPO's and town cancels. Looking for early, late dates and colours too & Grenfell Association (IGA) material, including corner cards, cancels and covers. Scans or copies with price for offer. Box 444, Yellowknife NT X1A 2N3, Canada, kor@theedge.ca.

YOUR CHAIRMAN IS RUNNING FOR BNAPS BOARD OF DIRECTORS

I have put forward my name for the BNAPS board. I would appreciate your support in this year's election. Besides my work on the Newsletter, I am also in charge of BNAPS' Ambassador Program (providing award information and articles to our website) and (this year) BNAPS' new Youth Activity Program. Under the latter we have sent out 15 cash grants this year to school clubs, junior stamp clubs and for youth activity tables at shows.

CORRECTIONS

Issue 118, Page 9. Pete Motson's email address is p.motson@btopenworld.com. Submarine "Halyguin" should have been "Malyguin."

Chairman/Editor: Norris (Bob) Dyer, 1708 Granada Court, Petaluma, CA 94954 nrdyer@comcast.net

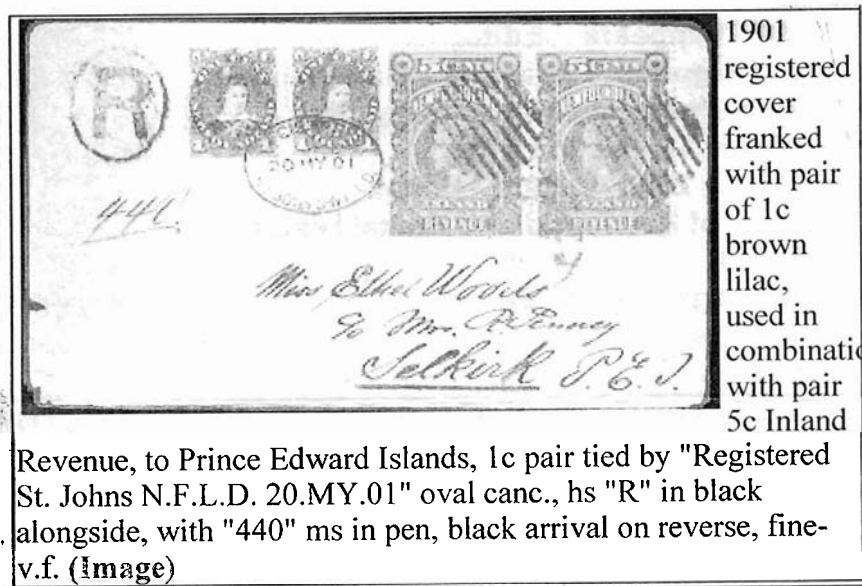
Treasurer & Circulation Manager: Martin Goebel, 13 O'Mara Place, St. John's, Newfoundland A1A 5B7
goebel@nf.sympathico.ca

THE NEWFIE NEWSLETTER
OF THE NEWFOUNDLAND STUDY GROUP OF BNAPS

Number 119

July/August 2006

A BLACK SHEEP REAPPEARS - The Editor



The above cover was lot #1579 in Cherrystone's May 10th auction selling for \$770 against a \$900 estimate. It features two 1¢ brown Edward stamps and two 5¢ revenue stamps from the first issue. It was sent registered from St. John's in 1901 to Prince Edward Island, at no obvious rate. The registry marking is Butt's RM2 and the ten bar killer his OB17, current for 1901 usage.

Robert Pratt, Page 425 of *The Nineteenth Century Postal History of Newfoundland*, mentions the cover as one of six-nine similar ones, apparently created by James Cox who was also famous for creating philatelic covers featuring bisects and imperfs. of the 1897 Royal Family issue. Page 424 shows another of this group.

A picture of this cover made an earlier appearance on Page 130 of BNATopics's issue of November, 1946 (remember, all such articles are available on the BNAPS website). The text below the picture read:

Member Joe C. Martin, #248, sends us the above odd and interesting Newfoundland cover. It is a registered cover mailed May 20th, 1901, and addressed to Selkirk, P.E.I. The interesting feature of the cover, as one can see, is that the registry rate was prepaid with two of the 5¢ Victoria Inland Revenue stamps [actually, the registry rate was only 3¢ to Canada in 1901]. The letter certainly did postal duty as evidenced by the backstamp and the postmarks on the front, which are characteristic of that time.

This was a choice item for those interested in Newfoundland philatelic oddities, although this time it did not sell for much – perhaps it is just too obviously philatelic.

GONE BUT NOT FORGOTTEN – CARL MUNDEN

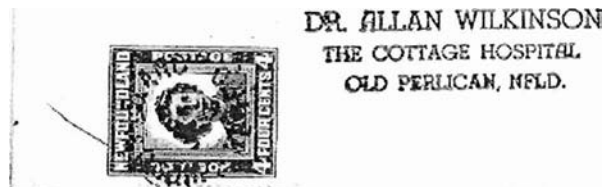
NORTH ARM BAY OF ISLANDS

North Arm was a fishing settlement at the extreme north end of Bay of Islands. The office opened 1917 and closed in 1931. Earlier population was 205 but was greatly reduced by 1931.



WOODS ISLAND

The largest of islands in the bay, this settlement's post office opened in 1901 and closed Jul. 16, 1962 due to "limited usefulness." Early population was 210.



DR. ALLAN WILKINSON
THE COTTAGE HOSPITAL
OLD PERLICAN, NFLD.

THE NEWFIE NEWSLETTER
OF THE NEWFOUNDLAND STUDY GROUP OF BNAPS

Number 119

July/August 2006

Page 9

GONE BUT NOT FORGOTTEN – CARL MUNDEN

WHITE BAY

White Bay is on the East side of the Great Northern Peninsula and this area is just as isolated, if not more so, than the South Coast. There are also four islands off the coast that once were inhabited.

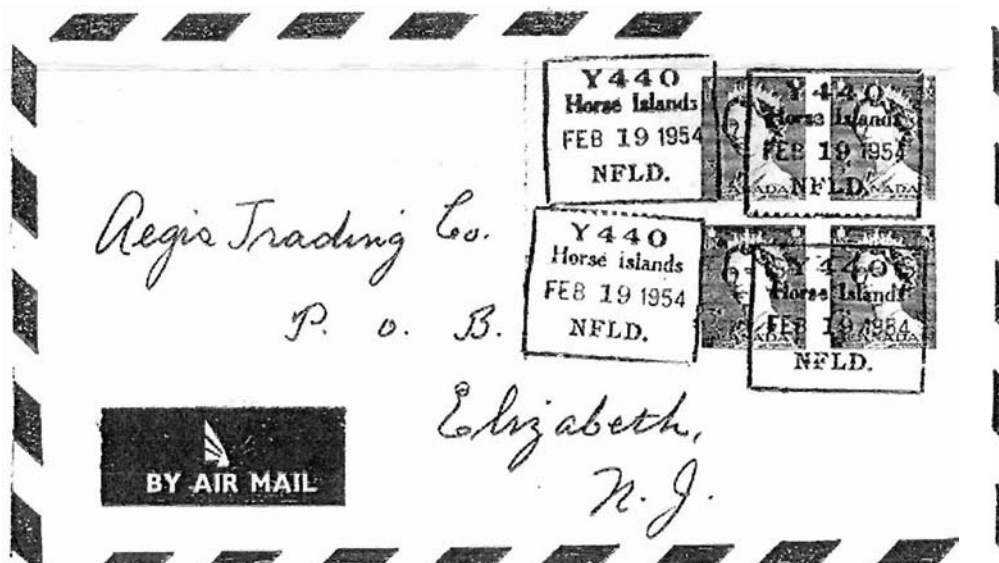
BEAR COVE

You will notice that this location has the W.B. for White Bay designation. This indicative of many Newfoundland town datestamps as all outposts were designated by the major bay that they were on. There were NO counties in Newfoundland. This office opened in 1909 and closed Aug. 29, 1969. Population 150



HORSE ISLANDS

One of the larger island groups, this location received mail by dog team over the ice in winter. The majority of inhabitants moved to Baie Verte after abandonment. Opening of post office 1908. Last day of operation was Apr. 30, 1969. Population 100



**THE NEWFIE NEWSLETTER
OF THE NEWFOUNDLAND STUDY GROUP OF BNAPS**

Number 119

July/August 2006

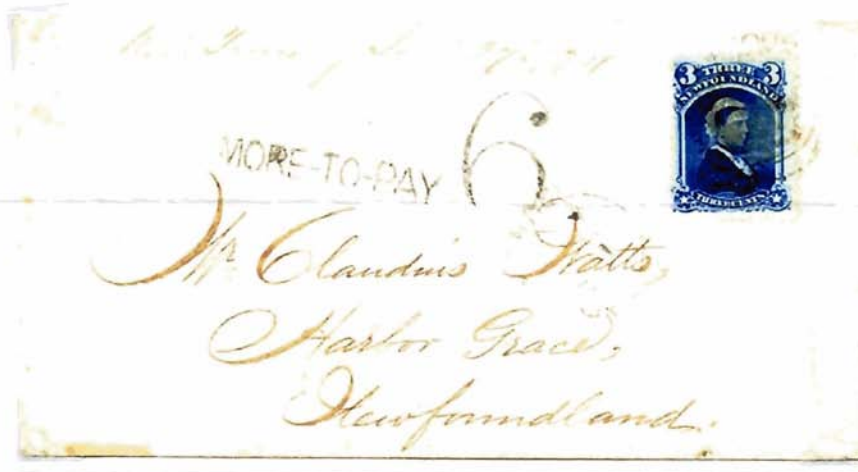
NEWFOUNDLAND POSTAL HISTORY JANUARY 1857- JUNE 1893 – COLIN LEWIS

Page
12

Colonial

Single Letter Rate 3 Cents Per ½ Ounce

Surcharged 6 Cents Due for Letter up to 1 Ounce



St. John's January 26th 1874

Note: The deficiency was charged double

Post Office Notice March 24th 1873

April 1st 1873 to July 20th 1891

Single Letter Rate Town Delivery 1 Cent Per ½ Ounce



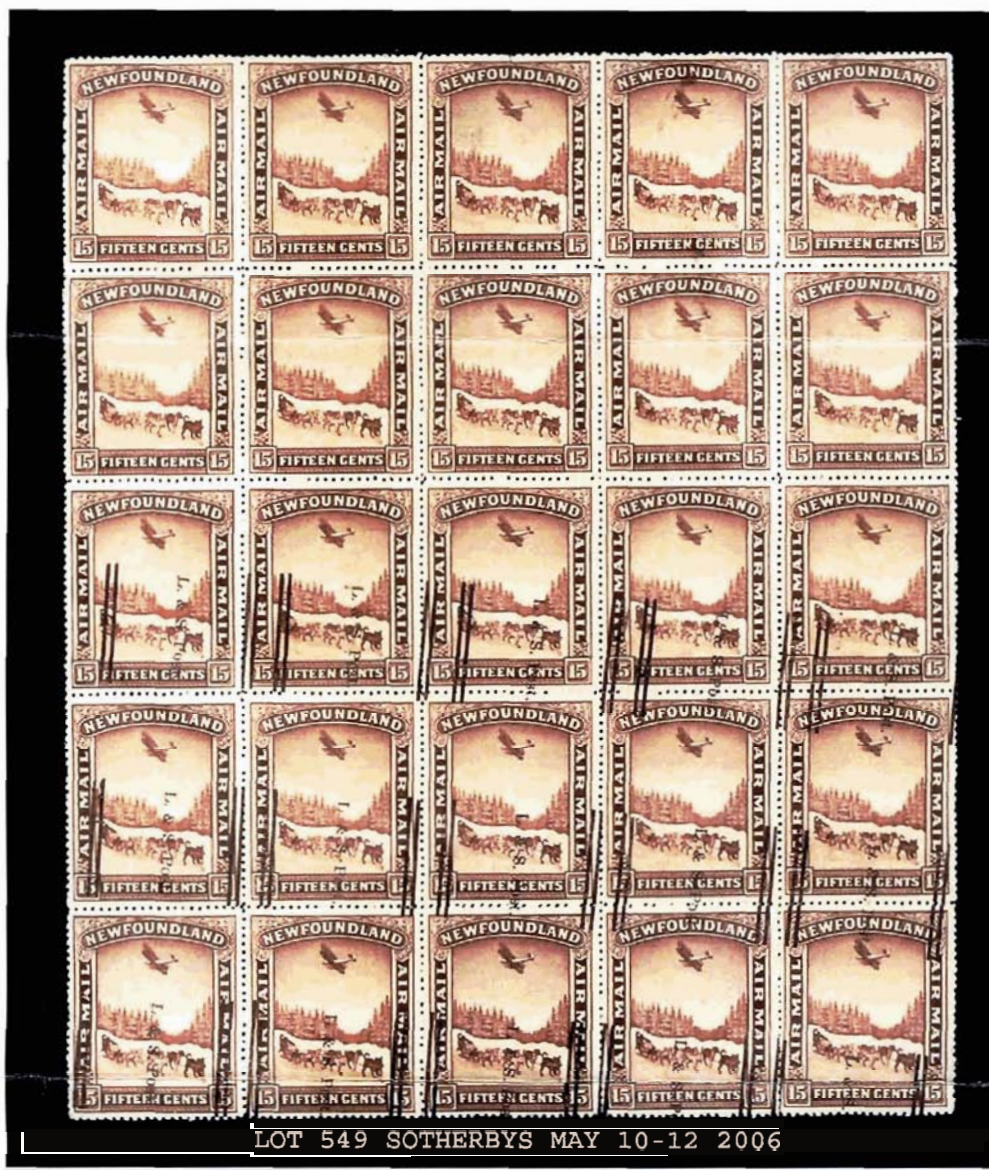
St. John's April 5th 1886

**THE NEWFIE NEWSLETTER
OF THE NEWFOUNDLAND STUDY GROUP OF BNAPS**

Number 119

July/August 2006

SOTHEBY'S MAY 10, 2006 AUCTION OF 300 LOTS OF MINT NEWFOUNDLAND



This block of 25 is not mentioned in the literature, selling for \$26,450 with commission. To distinguish it from vertical strips of the two known blocks with *only the top row sans overprint* it should probably be listed in future catalogues as "vertical strip of three, top two stamps without overprint." That is, if buyer breaks the sheet up. Let's hope not!

Because of space commitments in this issue, I will have to wait until the next Newfie Newsletter to provide more details on this once in a decade auction. All lots were mint with no postal history or used. The material was the property of Sir Gawaine Baillie. Many items had been off the market for decades.



Lot #678 - Balbo
Repaired.
\$29,900



Lot 609- Hawker
\$13,800



Lot 662- Dornier NH
\$18,400



Lot 308 - Scott #9
\$48,300

A FAVORITE BIT OF NEWFIE POSTAL HISTORY – W. Joseph Schlitt

One of my favorite pieces of Newfoundland postal history is not a cover, but a registered bank tag. Both sides of the tag are shown in Figures 1 and 2. One side is addressed simply "Bank of Montreal, Curling, N.F.L." This side also carries a large purple double-ring postmark that reads "REGISTERED G.P.O. ST JOHN'S, NFLD." This is dated MAR 12 1925. Finally, there is a weak hand stamped registration label with a manuscript registration number "792."

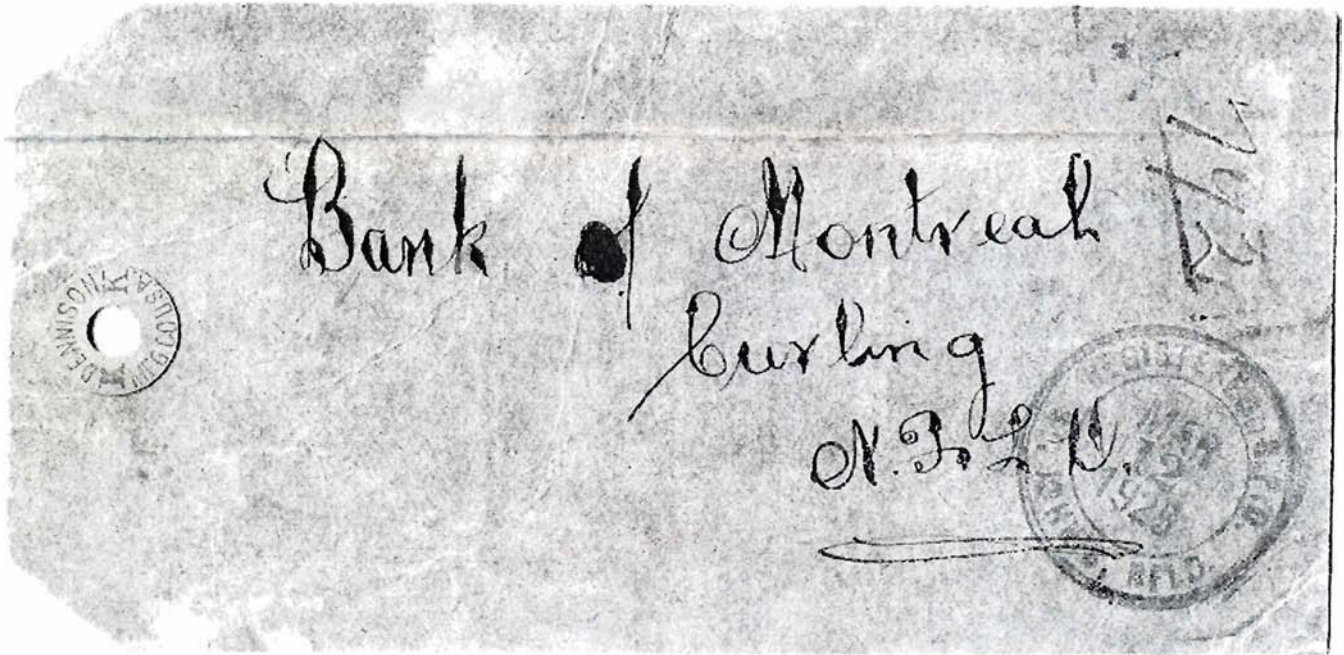


Figure 1. Bank tag of MAR 12 1925 (front)

The other side of the tag includes a horizontal pair and single of the 60-cent King Henry VII stamp (Sc. 74.) There are also three stamps from the 1923-24 pictorial issue. These include a single 1-cent stamp (Sc. 131) and two 20-cent stamps (Sc. 143.) These are tied by the same double-ring postmark. [See next page.]

There are several things that make this small piece of postal history appealing. One is simply that it is a bank tag. While I have seen a number of bank tags from Canada, this is the only one I have seen from Newfoundland. This suggests that Newfoundland bank tags are quite scarce.

Another interesting thing is the franking. This includes three examples of Sc. 74. This is the highest value non-air mail stamp issued by Newfoundland and commercial usage on cover is also scarce. Note, too, that the King Henry VII stamp was issued in 1897. Thus, it was nearly 30 years old when used, but was apparently still available at the main post office. [Editor: Robson Lowe reports that the supply of this stamp was not exhausted until 1936!]

The final appealing thing about the bank tag is the total postage - \$2.21. This is a huge amount for inland domestic mail, certainly the highest on anything in my collection. The rate is actually a bit of
(CONCLUDED NEXT PAGE)

THE NEWFIE NEWSLETTER
OF THE NEWFOUNDLAND STUDY GROUP OF BNAPS

Number 119

July/August 2006

A FAVORITE BIT OF NEWFIE POSTAL HISTORY (Concluded)

a puzzle. This was presumably determined at the post office, but does not exactly match rates cited by Walsh and Butts (NSSC, 6th edition, p.129.) For 1925, the latter gives 5¢ as the inland registration fee. The inland parcel rate is given as 8¢ for the first pound, plus 3¢ for each additional pound, or fraction thereof. Subtracting the 13¢ leaves \$2.08 as the postal for the additional weight. However, this amount is not evenly divisible by 3, giving 69.33 pounds. Perhaps there was an error in calculation or the clerk may have charged 1¢ for the final third of a pound. In any case, it appears the registration tag was used to ship a bank bag weighing about 70 pounds. Presumably, this was mostly coins, and not bank notes!



Figure 2. Bank tag (back)

AN UNUSED KRIPPNER ENVELOPE



One of his later efforts, which he copyrighted.

THE NEWFIE NEWSLETTER
OF THE NEWFOUNDLAND STUDY GROUP OF BNAPS

Number 119

July/August 2006

1937 BISECT COVERS – ARE THESE LEGITIMATE? Editor

Colin Bulloch submits the Botwood cover below from December 25, 1937 and writes:

I note that research was revealed that authorization was given to Botwood and Curling PO's to cover a shortage of 1¢ stamps. Does that mean that only 2¢ stamps could be bisected or did it give "carte blanche" to any attempts at those Post Offices? This cover would also suggest that Botwood PO had a shortage of stamps in both 1936 & 37.

Bulloch also points out the 4¢ bisect cover may be to same family as recognized 1936 covers. It is overpaid? But Newfoundlanders are frugal. Did Botwood lack both 1¢ & 2¢ stamps in 1937?



Here is a cover of mine showing a proper 5¢ rate to Canada in November, 1937 from the small town of Grand Bruit with a NO 29 37 postmark, using a bisected 2¢ Coronation stamp. It looks like a legitimate cover to a commercial firm but certainly not a Christmas mailing.



Would anyone like to comment on either of these covers? If so, fire away!!!

**THE NEWFIE NEWSLETTER
OF THE NEWFOUNDLAND STUDY GROUP OF BNAPS**

Number 119

July/August 2006

NEWFOUNDLAND'S POSTAL STATIONERY 1873-1941 – Horace Harrison

Page 50



DOUBLE TWO CENTS EMPIRE RATE TO INDIA VIA ST JOHN'S
NO 10, 06 VIA LIVERPOOL NO 26, ARRIVING 19 DECEMBER

