

**THE NEWFIE NEWSLETTER
OF THE NEWFOUNDLAND STUDY GROUP OF BNAPS**

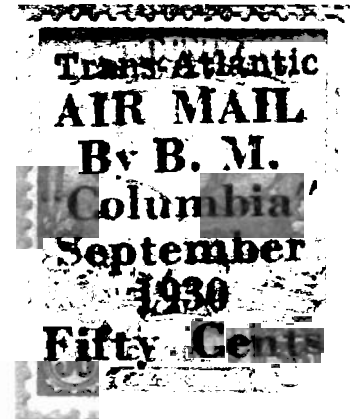
Number 111

March/April 2005

EDITOR'S COMMENTS

This Issue:

- Page 2 -- Flyer for Sammy Whaley's Book**
- Page 3 -- 1926 Rate Change for Registered Mail -- Editor**
- Page 4 -- Thick Paper One-Cent Red Victoria - Editor**
- Page 5 -- No, We Don't Owe You 18¢ -- Jim Luetje**
- Page 6 -- Travelling Post Office Postmarks of Newfoundland & Labrador -- Mike Street (about Brian Stalker's book)**
- Page 7 -- Newfoundland Postal History January 1857 -- June 1893
Page 23 -- Colin Lewis**
- Page 8 -- Vickers-Vimy Flight Now Probable for 2005- Editor**
- Page 9 -- 1909 -- United Kingdom Magazine Rate to
Newfoundland Reduced -- Bill Longely**
- Page 10 -- Newfoundland's Postal Stationery, Page 42 -- Horace Harrison**



SEE PAGE 5. FOR NEWS ON A 2005 VICKERS-VIMY FLIGHT, NEWFOUNDLAND TO IRELAND

WELCOME TO NEW MEMBERS

My records show seven new members joined us in 2004. They were Bruce Drewett, James Hansen, David Hoeniger, Richard McCammon, Walter Silvestri, Murray Smith & Robert Walker. Hope I did not miss anyone! Our membership is now 86, up from only 74 several years ago!

WHERE IS MY GILBERT CATALOGUE?

At BNAPEX2004, I was assured by an official of H.R. Harmer (who attended our workshop) that all study group members would get a catalogue of the October 2004 Edward M. Gilbert sale. This obviously did not happen! **I am sorry....**

BRIAN STALKER BOOK

We have another author in our group! See Page 6 for a description of Brian's new book, **Travelling Post Office Postmarks of Newfoundland & Labrador**. It can now be ordered from Ian Kimmerly. BNAPS members get a 40% discount. Congratulations, Brian!

SAMMY WHALEY'S BOOK

Sammy told me (Feb. 1) there are still a few left of **Newfoundland: 1865-1879 -- The New York Printings**. See the flyer on Page 2. He says all orders must be submitted by April first.

MESSAGE FROM GROUP MEMBER WHO COLLECTS REVEUES

Calling all Newfoundland revenue's. Peter de Groot seeks contact with group members to study use periods, rates and usages of inland revenues of Newfoundland. If you have information to share, note, thoughts and are interested in helping compile a survey, contact Peter at RR 1, Richards Landing, Ontario P0R 1J0; or email peter.degroot@sympatico.ca. Results would be shared in this newsletter.

NOTE FROM NEW MEMBER, DAVID HOENIGER

"A while ago I acquired a batch of covers with colourful Newfie stamps addressed by Dr. Allan Wilkinson from various outports to himself at the Cottage Hospital in Old Perlican, after confederation with Canada, alas. Does anyone know about this eager collector in Nfld fifty years ago and perhaps about more covers? Email is xuegingx@yorku.ca . Mail address is 17 Andeerson Ave. Toronto, Ontario, M5P 1H2."

Chairman/Editor: Norris (Bob) Dyer, 1708 Granada Court, Petaluma, CA 94954 nrdyer@comcast.net
Treasurer: Martin Goebel, 1'3 O'Mara Place, St. John's, Newfoundland A1A 5B7 goebel@nf.sympatico.ca

NEWFOUNDLAND: 1865-1879 – THE NEW YORK PRINTINGS

Sammy Whaley

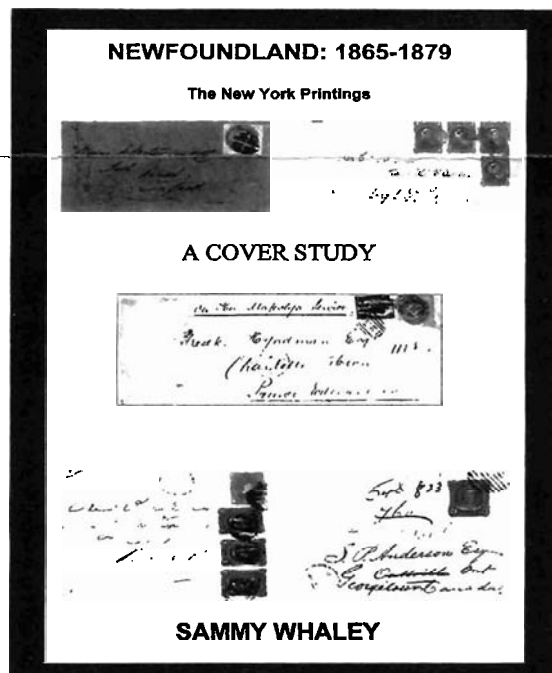
I'm proud to announce the first printing of this important work on Newfoundland postal history, offered initially only to members of the Newfoundland Study Group, BNAPS. The book is 286 pages and in color. -- Bob Dyer, Chairman

"It was the year 2001 when my friend and fellow Newfoundland Postal Historian Sammy Whaley asked my opinion of undertaking a study of the New York Printings of the First Cents issues of Newfoundland.

"Both Sammy and I were aware many additional covers and much new and updated information had been discovered since the exceptional work compiled by Robert H. Pratt was published in 1989. I encouraged him to investigate the potential for a new publication and decide on a format that would best serve the philatelic community in the 21st century.

"So successful was his search for information that he obtained details of almost 1,000 covers, all of which are recorded in this work, with illustrations of more than 700. This study has increased the number of recorded covers from the First Cents Period by almost fifty percent. Benefits to present and future students of Newfoundland philately will be immense...

-- Colin D. Lewis, Swansea, U.K.



As a result of a subsidy provided Sammy by the Study Group and individual members, the cost for this important book is just \$25 U.S. postpaid. Only 25 copies are available to members, and orders must be submitted to Sammy by April 1, 2005, or reserved by email. Submit your order with check to:

Sammy Whaley, PO Box 235, Opp, Alabama, U.S.A. 36467
or reserve copy by email Onycha2@aol.com

Name _____

Address _____

Telephone/email _____ Date _____

Page 2, NEWFIE NEWSLETTER # 111, March/April 2005

THE NEWFIE NEWSLETTER OF THE NEWFOUNDLAND STUDY GROUP OF BNAPS

Number 111

March/April 2005

1926 RATE CHANGE FOR REGISTERED MAIL

NEWFOUNDLAND, JUNE 1, 1926

General Post Office

Parcel Post Rates and Charges

The undernoted parcel post weights, rates and charges, will come into effect as and from the 1st June, and are ordered under authority of an Act passed by the Legislature.

Parcels addressed to any place in the new Electoral District of the place of posting and from all points in Nfld. to the Labrador.

Under 1 lb. 4 oz.	2c.
Over 1 lb. 4 oz. but not over 1 lb. 8 oz.	3c.
Over 1 lb. 8 oz. but not over 2 lb.	4c.
Over 2 lb. but not over 3 lb.	5c.
Over 3 lb. but not over 4 lb.	6c.
Over 4 lb. but not over 5 lb.	7c.
Over 5 lb. but not over 6 lb.	8c.
Over 6 lb. but not over 7 lb.	9c.
Over 7 lb. but not over 8 lb.	10c.
Over 8 lb. but not over 9 lb.	11c.
Over 9 lb. but not over 10 lb.	12c.
Over 10 lb. but not over 11 lb.	13c.
Over 11 lb. but not over 12 lb.	14c.
Over 12 lb. but not over 13 lb.	15c.
Over 13 lb. but not over 14 lb.	16c.
Over 14 lb. but not over 15 lb.	17c.
Over 15 lb. but not over 16 lb.	18c.
Over 16 lb. but not over 17 lb.	19c.
Over 17 lb. but not over 18 lb.	20c.
Over 18 lb. but not over 19 lb.	21c.
Over 19 lb. but not over 20 lb.	22c.
Over 20 lb. but not over 21 lb.	23c.
Over 21 lb. but not over 22 lb.	24c.
Over 22 lb. but not over 23 lb.	25c.
Over 23 lb. but not over 24 lb.	26c.
Over 24 lb. but not over 25 lb.	27c.
Over 25 lb. but not over 26 lb.	28c.
Over 26 lb. but not over 27 lb.	29c.
Over 27 lb. but not over 28 lb.	30c.
Over 28 lb. but not over 29 lb.	31c.
Over 29 lb. but not over 30 lb.	32c.
Over 30 lb. but not over 31 lb.	33c.
Over 31 lb. but not over 32 lb.	34c.
Over 32 lb. but not over 33 lb.	35c.
Over 33 lb. but not over 34 lb.	36c.
Over 34 lb. but not over 35 lb.	37c.
Over 35 lb. but not over 36 lb.	38c.
Over 36 lb. but not over 37 lb.	39c.
Over 37 lb. but not over 38 lb.	40c.
Over 38 lb. but not over 39 lb.	41c.
Over 39 lb. but not over 40 lb.	42c.
Over 40 lb. but not over 41 lb.	43c.
Over 41 lb. but not over 42 lb.	44c.
Over 42 lb. but not over 43 lb.	45c.
Over 43 lb. but not over 44 lb.	46c.
Over 44 lb. but not over 45 lb.	47c.
Over 45 lb. but not over 46 lb.	48c.
Over 46 lb. but not over 47 lb.	49c.
Over 47 lb. but not over 48 lb.	50c.
Over 48 lb. but not over 49 lb.	51c.
Over 49 lb. but not over 50 lb.	52c.
Over 50 lb. but not over 51 lb.	53c.
Over 51 lb. but not over 52 lb.	54c.
Over 52 lb. but not over 53 lb.	55c.
Over 53 lb. but not over 54 lb.	56c.
Over 54 lb. but not over 55 lb.	57c.
Over 55 lb. but not over 56 lb.	58c.
Over 56 lb. but not over 57 lb.	59c.
Over 57 lb. but not over 58 lb.	60c.

Parcels addressed to places outside the Electoral Districts from offices of posting, including to and from St. John's.

Under 1 lb.	5c.
Over 1 lb. but not over 2 lb.	10c.
Over 2 lb. but not over 3 lb.	15c.
Over 3 lb. but not over 4 lb.	20c.
Over 4 lb. but not over 5 lb.	25c.
Over 5 lb. but not over 6 lb.	30c.
Over 6 lb. but not over 7 lb.	35c.
Over 7 lb. but not over 8 lb.	40c.
Over 8 lb. but not over 9 lb.	45c.
Over 9 lb. but not over 10 lb.	50c.
Over 10 lb. but not over 11 lb.	55c.
Over 11 lb. but not over 12 lb.	60c.

From any place in Nfld. to places in Canada and the United States.

Under 1 lb.	Y4c.
Over 1 lb. but not over 2 lb.	25c.
Over 2 lb. but not over 3 lb.	42c.
Over 3 lb. but not over 4 lb.	56c.
Over 4 lb. but not over 5 lb.	70c.
Over 5 lb. but not over 6 lb.	84c.
Over 6 lb. but not over 7 lb.	98c.
Over 7 lb. but not over 8 lb.	112c.
Over 8 lb. but not over 9 lb.	126c.
Over 9 lb. but not over 10 lb.	140c.
Over 10 lb. but not over 11 lb.	154c.
Over 11 lb. but not over 12 lb.	168c.
Over 12 lb. but not over 13 lb.	182c.
Over 13 lb. but not over 14 lb.	196c.
Over 14 lb. but not over 15 lb.	210c.

Small bottles of liquid for medicinal purposes, when carefully packed may be mailed to points within the Electoral Districts, but not to other Districts or distant points.

Parcels containing liquid are not acceptable for transmission to the above distant points.

Parcels must have attached a Customs Declaration of contents, value and name of sender. In case furs are enclosed a Customs Export Entry is necessary.

Parcels may be insured up to \$50.00 to a local address and to Canada and the United States up to \$100.00, for the following additional fees:—\$10.00, 5c.; \$20.00, 10c.; \$40.00, 15c.; \$60.00, 20c.; up to \$100.00, 30c.

Parcels may be sent Cash on Delivery to local Money Order Offices for following fees: Collection up to \$15.00, 5c.; up to \$30.00, 10c.; up to \$45.00, 15c.; up to \$60.00, 20c.

The fee for registering a letter, addressed to Canada or the United States, or any place outside Newfoundland, is increased to 10c. in addition to the regular postage of 4c. per ounce.

Parcels from abroad, upon which customs duty is levied, are subject to a post office charge of 10c. in addition to the duty charge, which must be collected by Postmasters at office of delivery and remitted with duty money to Accountant, General Post Office, St. John's.

W. J. WOODFORD,
Minister Posts & Telegraphs.

In Newsletter #94, Randall Martin showed a cover sent registered to the U.S. from DEC 15 1926 at the 14¢ overall rate (4¢ for letter & 10¢ for registry). He questioned when this rate went into effect. NSSC states 1927 but that did not seem to be correct. Randall's plea for help went unanswered until now. The G.P.O. rate change to the left was published in the St. John's Evening Telegram on June 1, 1926. C.A. Stillions researched and found this great item!

The next to last paragraph reads:

The fee for registering a letter addressed to Canada or the United States, or any place outside Newfoundland, is increased to 10¢, in addition to the regular postage of 4¢



Is this dirty registered cover to the United States at the left the earliest example of the 14¢ rate known?

Both registered postmarks clearly read JUN 16 1926.

Earlier one, anybody?
The Editor

THE THICK PAPER ONE-CENT RED VICTORIA

Eastern Auctions lot #375 - #79i, 1¢ carmine Rose Queen Victoria, a spectacular upper right corner mint single on distinctive thick paper... October 23, 2004



This is a controversial variety, with little recorded about it. It is listed in UNITRADE as “#79i thick paper.” In NSSC the variety is listed on “thick card paper.” The latter may have derived from Robson Lowe’s mention of the one-cent Victoria “on thick card”. Lowe goes on to say, however, “The status of this variety is unknown.” That means he never saw one.

I have recently read all the articles on Newfoundland philately published in BNATopics since its inception thanks to their availability now on the www.bnaps.org website. In this case, the eyestrain may have been worth it. In May-June, 1981, Robert Pratt wrote **Newfoundland – The Postage Stamps of 1897**. On page 9 he lists “The Oddities of the Royal Issue”. In that section he writes that:

These exist on .0045 inch thick white wove paper – ½ cent imperforate and 1 cent perforated (Red).

In an earlier article (BNATopics, June 1965) Pratt said only eight copies were known.

I purchased this stamp from Eastern and brought it to a friend of mine who studies stamp papers and is a whiz with a micrometer. Fortunately, the selvage of the above stamp is ungummed. I also have a complete sheet of 100 of the red Victoria with ungummed selvage, and a large margin block. Gum increases thickness, so one must measure an area without it to get a true measurement of paper thickness. The selvage of the sheet and large block measured .0032 inches while the selvage of the stamp above just over .0044! The instant stamp is obviously on the same type of paper Pratt identified. Either my stamp confirms Pratt’s research or Pratt’s research confirms my stamp as being on the thick paper – 38% thicker than the standard paper (44/32). Any comments? -The Editor

THE NEWFIE NEWSLETTER
OF THE NEWFOUNDLAND STUDY GROUP OF BNAPS

Number 111

March/April 2005

NO, WE DON'T OWE YOU 18¢ SAYS THE G.P.O.

Jim Luetje

ST. JOHN'S,

15th September, 1937

Dear Sir:-

I have to acknowledge receipt of your letter of the 30th August together with Invoice of Stamps previously forwarded to you. I note your reference to the discount and Stamps reduction of .18¢ and I have to say that the Bank with which we do business the Bank of Montreal here charged the amount in question: Discount .15¢ and Stamp Tax .03¢ Total .18¢ in all. There is nothing whatever that this Office can do in the matter. When remitting for Stamps in future, I would prefer that you remit by Post Office Money Order which will be paid at face value in this Service.

With regard to the Stamps used for Postage, I think that the letter in question was registered, but before I can give you definite ruling on the matter I would be pleased if you would let me have the cover in question and I shall then endeavor to satisfy you on the matter, after examination of the cover.

I am glad to know that you are pleased with the Stamps received. Yes, you can obtain any number of the Stamps in any denomination, according to your requirements, and I shall be glad to receive further orders.

Yours faithfully,


HEAD POSTMASTER.

H. Fitzgerald,
4524 Sunnyside Ave.,
Seattle, Wash.,
U.S.A.

Jim submitted this item. I have cropped the top part of the G.P.O. envelope to allow a larger image. I hope you can read the above. Apparently, a fellow from away submitted a check for a stamp order as opposed to a "Post Office Money Order", so the Bank of Montreal charged 18¢, upsetting the customer. H. Fitzgerald also questioned whether his order had been sent registered. He was "pleased with the stamps", at least. Perhaps it was the two coronation issues.

**THE NEWFIE NEWSLETTER
OF THE NEWFOUNDLAND STUDY GROUP OF BNAPS**

Number 111

March/April 2005

TRAVELLING POST OFFICE POSTMARKS OF NEWFOUNDLAND & LABRADOR

Mike Street

Brian Stalker's new book is the most comprehensive study of this subject ever published and is now available [see ordering details at bottom of the page]. Because most official records for the Newfoundland Post Office were destroyed shortly after Confederation in 1949 it is not possible to create a definitive work, but this analysis draws together numerous pieces of a highly fragmented jig-saw into a nearly complete picture.

Over fifty years ago, the Meyerson brothers of New York published their study of Newfoundland's Railway and Travelling Post Office postmarks, in *B.N.A. TOPICS* in North America and in the *Journal of the TPO & Seapost Society* in the United Kingdom. Further analysis culminated in Lewis Ludlow publishing a detailed analysis of the postmark hammers in *The RPO Newsletter* of the Canadian Railway Post Office Study Group of BNAPS in the early 1980s, and Kidd & Cockrill publishing an illustrated booklet *Newfoundland Travelling Post Office Cancellations* in 1987, the latter incorporating updated information from members of the TPO & Seapost Society.

Using Ludlow's hammer analysis as a starting point, this work brings together both tabulated and illustrated data. Brian Stalker has spent four years undertaking a complete review and re-assessment of previously published data and creating around 500 postmark illustrations. He has been assisted by ten members of the Canadian RPO Study Group and benefited from the extended loan of three previously unreported collections to supplement his own extensive collection, part of which was exhibited at BNAPEX 1997 in St. John's, Newfoundland. Several 'new' finds are illustrated, including copies of proof strikes from the Canadian Postal Archives, and the period of use of many of the postmarks has been extended. In addition, this work includes an update of C R McGuire's work on the postmarks of the Newfoundland Post Office Mail Assorting Office, North Sydney, Nova Scotia, an 'overseas' post office, initially situated on the pier used by the mail steamer between North Sydney and Port aux Basques, Newfoundland, the starting point for mail in transit to Newfoundland.

Published as a sister volume, and in a similar format, to Ross Gray's *Railway Postmarks of the Maritimes* (BNAPS 2000) this volume contains a wealth of detailed data for the specialist, but the layout and illustrations make it comprehensible and of interest to the general collector.

Brian Stalker has been collecting Canadian Railway postmarks for twenty-five years, regularly exhibiting RPO studies at conventions of BNAPS and the Canadian Philatelic Society of Great Britain, of which he is a Fellow. This book is the result of his first post-retirement philatelic project. Brian is already collecting and collating data for his next major project, the people, places, mail-cars and steamers behind the postmarks of Newfoundland and Labrador's Travelling Post Offices.

TRAVELLING POST OFFICE POSTMARKS OF NEWFOUNDLAND & LABRADOR; Brian Stalker, 2005, Spiral Bound, 115 pages, 8.5 x 11. ISBN: 0-919854-52-4. Published by the British North America Philatelic Society (BNAPS). Stock # 99016.1 - \$C34.95. Shipping is extra - for payment by cheque or money order add 10% in Canada, 15% to the US, 20% overseas; Credit card orders (Visa, Mastercard) will be billed for exact amount of postage plus \$2 per order. GST is payable for Canadian orders. No PST applies. **BNAPS members receive a 40% discount from retail prices.** BNAPS books are available from Ian Kimmerly Stamps, 112 Sparks Street, Ottawa, Ontario K1P 5B6, Canada; Phone: (613) 235-9119. Internet orders can be placed via <http://www.iankimmerly.com/books/>

**THE NEWFIE NEWSLETTER
OF THE NEWFOUNDLAND STUDY GROUP OF BNAPS**

Number 111

March/April 2005

NEWFOUNDLAND POSTAL HISTORY JANUARY 1857- JUNE 1893 - COLIN LEWIS

Page 23

Provinces – Nova Scotia

Single Letter Rate Interior to First Port 6½ Pence Sterling Per ½ Ounce Paid in Cash

Nova Scotia Internal Rate Collect Fee 5 Cents Per ½ Ounce



Way Office October 7th 1862



St. John's Carbonar May 1st 1862

Note: The Carbonar Postmaster has only struck a 6 Pence Rate Handstamp thus showing ½ Penny underpaid. However, there were no 6½ or ½ handstamps available in Newfoundland and the Postmaster merely omitted marking the ½ Penny in manuscript. He did use his circular Carbonar Paid Handstamp in red to indicate it was paid to the first port in Nova Scotia, in this case Halifax.

VICKERS-VIMY FLIGHT NOW PROBABLE FOR JUNE 2005



Lang Kidby working on new Orenda engine for the Vimy, 2004

The VIMY project finally appears to be on track. Funding has been found, including a generous contribution from the famous Steve Fossett who achieved a solo balloon flight around the world in 2002. The goal is to fly the plane from where it is hangered near Novato, California to Victoria in April and then across Canada to St. John's in late May. Weather (and the plane permitting) the recreation of the 1919 Alcock-Brown flight would take place in mid-June. Mark Rebholz and Fossett would fly to Ireland to a landing spot as *close as possible* to Clifden which does not have an air strip (remember, Alcock-Brown landed in a bog!).

Vimy Restoration is a non-profit organization and this is one of its projects – "Vimy Atlantic". I have been in contact with project manager, David Holbrook, and sent him a package of material on the 1919 flight from my files along with a proposal to carry some two pounds of mail. Peter McMillan is one of the owners of the plane and has told Holbrook he thinks they could find room for the mail. We are envisioning some 300 covers, 75 of which would be signed. J. Don Wilson is coordinating the support efforts of the St. John's Philatelic Society. An updated cachet is being drafted and Don feels he will be able to get a special postmark from Canada Post. Colin Lewis is in the process of contacting someone who could pick up the mail in Clifden.

This is an exciting project and I hope the aircraft will successfully pass all its trial flights with its new Orenda engines. The trip across Canada would also test the plane's abilities before any Atlantic flight. **A more through report will be included in the May/June Newsletter....** Editor 2-1-05.

1909 – UNITED KINGDOM MAGAZINE RATE TO NEWFOUNDLAND REDUCED

Bill Longely

NEWFOUNDLAND MAGAZINE POST

ARRANGEMENTS have been made with the Government of Newfoundland for the extension to that Colony on and from the 1st of December, 1909, of the privileges of the Canadian Magazine Post.

The postage rate on duly registered British Newspapers, Magazines and Trade Journals intended for despatch to Newfoundland by direct Newfoundland Packet, or via Canada by direct Canadian Packet will, on and from that date, be reduced from $\frac{1}{2}$ d. per 2 ounces (or 4d. per pound) to 1d. per pound.

The conditions of transmission by the Newfoundland Magazine Post will be those applicable to the Canadian Magazine Post.

All periodicals registered for the Canadian Magazine Post, including all Newspapers registered for transmission in the United Kingdom at the Newspaper rate of postage, are eligible for transmission to Newfoundland at the Newfoundland Magazine Post rate of 1d. per pound.

The reduced rate does not apply to Magazines, &c., sent by way of New York.

By Command of the Postmaster General

GENERAL POST OFFICE,
30th November, 1909.

[1094]

Printed for H.M. Stationery Office by W. P. GARDNER & SONS LIMITED, Prince Street, Old Bailey, London, E.C.4.

L. 105

**THE NEWFIE NEWSLETTER
OF THE NEWFOUNDLAND STUDY GROUP OF BNAPS**

Number 111

March/April 2005

NEWFOUNDLAND'S POSTAL STATIONERY 1873-1941 – Horace Harrison

Page 42

