

**THE NEWFIE NEWSLETTER
OF THE NEWFOUNDLAND STUDY GROUP OF BNAPS**

Number 108

September/October 2004

EDITOR'S COMMENTS

- Page 2-4 **Town Cancel Trivia**
- Page 5 **Newfoundland Postal History January 1857 – June 1893 (Page 7) – Colin Lewis' exhibit**
- Page 6-8 **Newfoundland: 1865-1879 The New York Printings-Sammy Whaley. *These pages present a summary list of the Cents covers and Sammy's Introduction to his book on this subject.***
- Page 8 **Vickers Vimy Atlantic Flight Update – The Editor**
- Page 9 **Newfoundland's Postal Stationery, Page 39 – Horace Harrison**
- Page 10 **Group Financial Statement and Dues Renewal - Martin Goebel**
-



C.R. MCGUIRE WINS ROBERT PRATT AWARD

For those of you who may have missed the article in the recent BNA TOPICS, or the piece in the American Philatelist, group member C.R. McGuire has won this year's Robert H. Pratt award, given by the Collectors Club of Chicago. McGuire, of Ottawa, won it for his series on the Newfoundland ferry *SS Caribou* in the Postal History Society of Canada Journal. McGuire also writes for TOPICS, and we have had a piece from him, **and would certainly appreciate more!** The Pratt Award carries with it a prize of \$1,000 (U.S.). Congratulations!!

BNAPS2004- BALTIMORE

The Newfoundland Study Group will have a workshop at the Baltimore convention. *At this point*, the schedule calls for it to be 2:00/3:30 on Friday, September 3rd. The program draft reads:

Bob Dyer-Single Frame Exhibiting – Concepts (Bob has won four single frame Platinum awards).

Sammy Whaley – Newfoundland 1865-1879 (Sammy shows his complete postal History study).

The BNAPS convention will be held in conjunction with APS national show, BALPEX, so there should be a lot of things to do and see. Don Wilson will chair the meeting. The three of us realize that Baltimore may be a bit of a distance for some of you, but do encourage you to attend the show, and (please!) our workshop, as we need your support. C.A. Stillions and I will have exhibits on display at the show. Stillions' will be on **Newfoundland's Last Definitive**. Mine will be on **Newfoundland's 1920 Postal Shortage**.

ARTICLES AND/OR PICTURES NEEDED FOR FUTURE NEWSLETTERS!!!

OUR DEALER MEMBERS

J-Claude Michaud, P.O. Box 31248, Halifax, Nova Scotia B3K 5Y1

R.L. McGillivray, Stanley Stamps, 1096 Richards St. Vancouver, B.C. V6B 3E1

John Jamieson, Saskatoon Stamp Centre, P.O. Box 1870, Saskatoon, Saskatchewan S7K 3S2

Bill Longely, Longely Auctions, P.O. Box 620, Waterdown, Ontario L0R 2H0

Chairman/Editor: Norris (Bob) Dyer, 1708 Granada Court, Petaluma, CA 94954 nrdyer@comcast.net

Treasurer: Martin Goebel, 13 O'Mara Place, St. John's, Newfoundland A1A 5B7 goebel@nf.sympatico.ca

**THE NEWFIE NEWSLETTER
OF THE NEWFOUNDLAND STUDY GROUP OF BNAPS**

Number 108

September/October 2004

TOWN CANCEL TRIVIA

Carl Munden

Throughout Newfoundland, there are many quaint and descriptive names given to the various outposts or their surrounding areas.

The area known as CRABB(E)S is on the West Coast about halfway between Port-Aux-Basques and Stephenville. The CRABBES RIVER flows down from the Long Range Mountains and empties into the Gulf of St. Lawrence at this location.

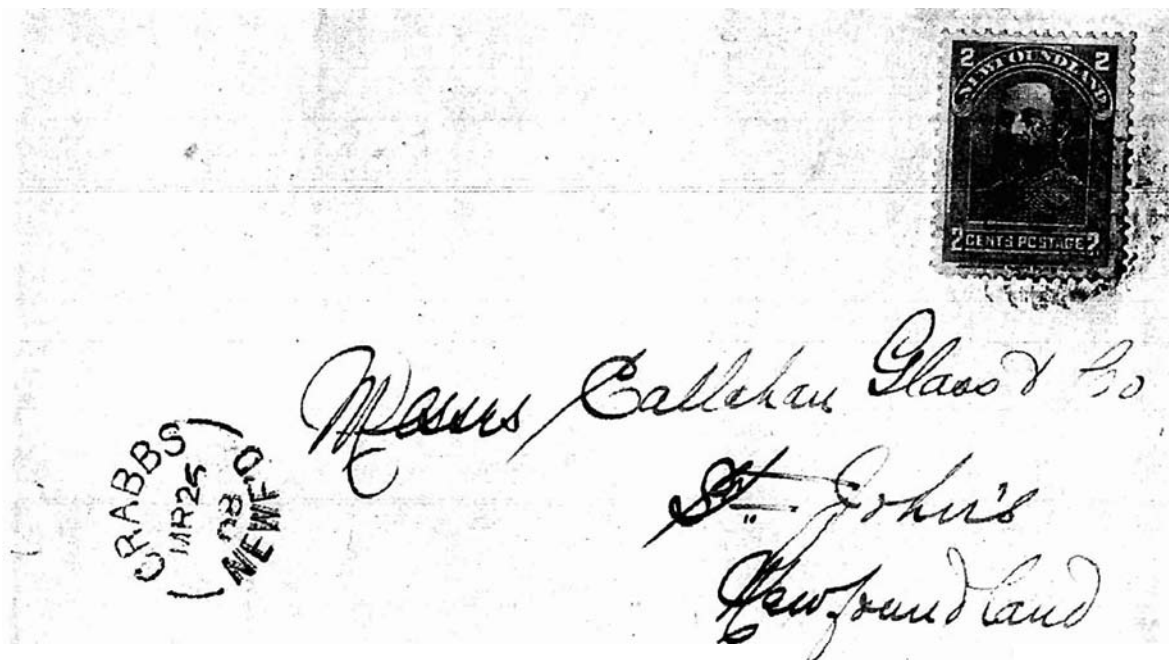
Over a period spanning 1891 to 1931, there were a total of 5 different post offices with CRABB(E)S in their named hammers and 2 more to follow later when the CRABB(E)S designation was eliminated.

The first to open in the area was **CRABB'S BROOK** as a Way Office in 1883. It was upgraded to Post Office status in 1891, although a split ring hammer was proofed July 6 1889. This office closed in either (a) 1899 or (b) 1912 depending on your source being (a) SMALL or (b) WALSH.

The second office to open was **CRABB'S HEAD** in 1900 and closed in 1906 (WALSH) or 1920 (SMALL.)

It would appear at first glance that CRABB'S HEAD was out on the coast as the name still appears on today's maps. Another feature on those maps is the presence of LITTLE CRABB'S BROOK draining into CRABBES RIVER at 3 km. upstream from the mouth.

The next office to open was **CRABBS/CRABBES**.



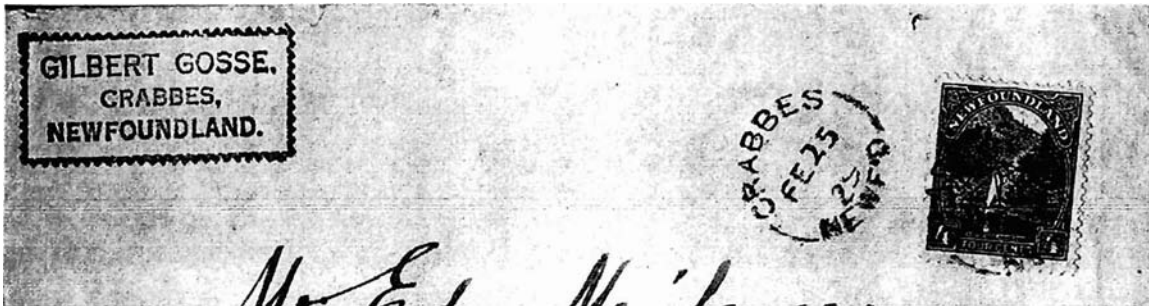
(Continued Next Page)

**THE NEWFIE NEWSLETTER
OF THE NEWFOUNDLAND STUDY GROUP OF BNAPS**

Number 108

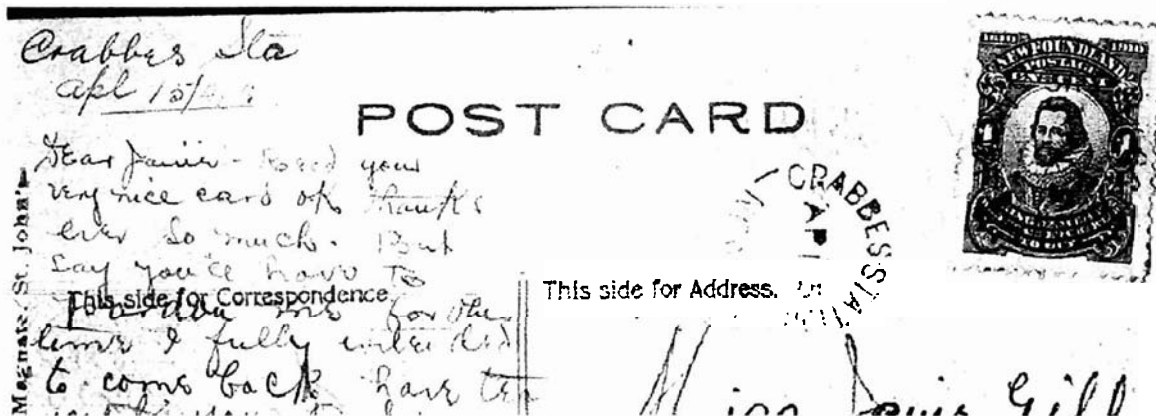
September/October 2004

Town Cancel Trivia (Continued) - Carl Munden



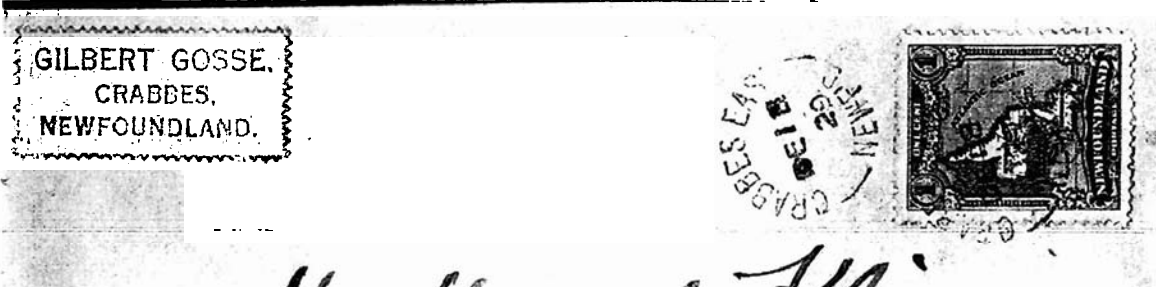
This office was open from 1906 to 1931. It is unknown when the spelling changed as neither hammer has a recorded proof strike.

Another post office in the area was established on the rail line and became **CRABBES STATION**.



This office was established in 1911. This is a first year strike as per the date on the card albeit no year indicia in hammer strike.

In 1920, this office was renamed **CRABBES EAST**.



CRABBES EAST continued until 1931.

(Concluded Next Page)

THE NEWFIE NEWSLETTER
OF THE NEWFOUNDLAND STUDY GROUP OF BNAPS

Number 108

September/October 2004

Town Cancel Trivia (Concluded) - Carl Munden

During 1931, the year of great upheaval in Newfoundland's postal system, there were over 375 outport offices closed. In the CRABBES area the situation was met with a different challenge.

The two remaining offices simply changed names, with **CRABB'S/CRABBES** becoming



and **CRABBES EAST** becoming



Both **ST. DAVID'S** and **ST. FINTAN'S** post offices remain open to this day. The reason for one Welsh Saint and one Irish Saint is because **ST. DAVID'S** is predominantly a Protestant settlement, while the inhabitants of **ST. FINTAN'S** are mostly Catholic.

And what happened to Mr. Gilbert Gosse ?

The **CENSUS** for **CRABBES** 1921: Lists Gilbert Gosse age 38 and wife Marcella with a large family.

The **CENSUS** for **ST. DAVID'S** 1935: Lists Marcella as family head and widow.

The headstone records for the Protestant Cemetery in **ST. DAVID'S**: **Gilbert Gosse ...D. Sep. 25 1933** aged 50 years.

The biggest problem with this was the discrepancies of dates with Walsh's records and those of Richard Small, who apparently took the dates from the **NFLD POST OFFICE** records handed over to Canada (who subsequently destroyed most of them) on entrance to Confederation. Other references were **NFLD Geneological Web Site** and **Encyclopedia of Newfoundland and Labrador**.

**THE NEWFIE NEWSLETTER
OF THE NEWFOUNDLAND STUDY GROUP OF BNAPS**

Number 108

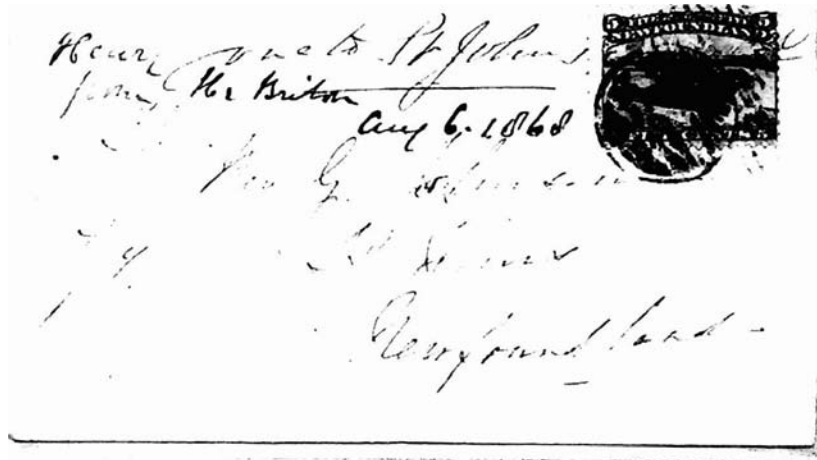
September/October 2004

NEWFOUNDLAND POSTAL HISTORY JANUARY 1857- JUNE 1893 - COLIN LEWIS

Page 7

Colonial

Single Letter Rate 5 Cents Per ½ Ounce



Harbor Britain July 24th 1868

Note: Redirected to Bay Roberts, ostensibly without charge, from St. John's August 6th 1868.

Change in Colour of the 5 Cents Stamp



St. John's May 3rd 1869

Note: The 5 Cents Black Seal was a replacement issue for the exhausted 5 Cents Brown Seal in November 1868.

**THE NEWFIE NEWSLETTER
OF THE NEWFOUNDLAND STUDY GROUP OF BNAPS**

Number 108

September/October 2004

SAMMY WHALEY'S NEWFOUNDLAND:1865-1879 THE NEW YORK PRINTINGS

This page summarizes the covers by catalogue number, and quantity found, in Sammy's study.

Stamp	CAT. #S Scott/NSSC/SG	Arrival Date	# Covers	Earliest usage
2 CENT THIN PAPER	*24a/26/25	15 November 1865	27	10 July 1866 (page 117)
2 CENT WHITE PAPER	24/26a/31	Late September 1870	51	27 March 1871 (104)
5 CENT BROWN	25/27/26	15 November 1865	49	20 March 1866 (54)
5 CENT BLACK	26/36/38	February 1869	69	15 February 1869 (60)
10 CENT THIN PAPER	27a/28/27	15 November 1865	31	24 January 1866 (116)
10 CENT WHITE PAPER	27/28a/32	Late September 1870	37	24 November 1870 (193)
12 CENT THIN PAPER	28a/29/28	15 November 1865	55	27 December 1865 (176)
12 CENT WHITE PAPER	28/29a/33	Late September 1870	88	21 October 1870 (185)
13 CENT ORANGE BROWN	30/30/29	15 November 1865	56	23 February 1866 (154)
24 CENT	31/31/30	15 November 1865	48	10 November 1876 (95)
1 CENT FIRST PRINTING	32/32/34	November 1868	20	12 May 1869 (101)
1 CENT SECOND PRINTING	32A/33/35	Late September 1870	39	27 March 1871 (104)
3 CENT FIRST PRINTING	33/34/36	Late September 1870	54	27 October 1870 (74)
3 CENT SECOND PRINTING	34/35/37	01 April 1873	116	03 July 1873 (208)
6 CENT FIRST PRINTING	35/37/39	Late September 1870	180	31 October 1871** (NP)
1 CENT ROULETTE	37/38/40	Mid 1877	12	10 July 1877 (214)
2 CENT ROULETTE	38/39/41	Late 1879	11	21 December 1879 (214)
3 CENT ROULETTE	39/40/42	Mid 1877	55	10 July 1877 (214)
5 CENT ROULETTE	40/41/43	Late 1876	91	06 December 1876 (NP)

The total number in this table exceeds the listing as here combinations are included for each stamp on the cover. In the body of the book combinations are only placed in the listing of the stamp with the lowest catalog number.

* Important note: in 2000 Scott reversed their catalog numbers for the following-the 2 cent thin/white paper, the 10 cent thin/white paper and the 12 cent thin/white paper. Prior to 2000 the 2 cent thin paper was #24, the 10 cent thin paper was #27 and the 12 cent thin paper was #28. Anyone consulting auction catalogs prior to 2000 should remember this. This also explains the considerable number of misdescriptions even today.

** Pratt records a cover dated 30 December 1870 that was stolen from his collection; it is not recorded in this work.

**THE NEWFIE NEWSLETTER
OF THE NEWFOUNDLAND STUDY GROUP OF BNAPS**

Number 108

September/October 2004

SAMMY WHALEY'S NEWFOUNDLAND:1865-1879 THE NEW YORK PRINTINGS

INTRODUCTION

Pre 1900 Newfoundland postal history is a challenge. Excluding the Pence Issues little has been published to satiate the thirst of present enthusiasts or expand the knowledge of future collectors who may possibly develop an interest in this period. Due to the evolution of the hobby the postal history of the Cents period has remained a virtual philatelic unknown to most Newfoundland collectors. Perhaps, if knowledge of this area is to be expanded, the historical collecting and exhibiting methodology does not need continuation of the present evolution, but rather a revolution in its approach.

Historically purists have placed the Cents covers in two general categories-collectible and others. The collectible category include a) those covers visually appealing to judges and/or acceptably described as being "unique"-covers generally seen in exhibits-and b) those covers relegated to collections owing to their provenances and/or cost. These are the combinations, multiples and "uniques" that generally gravitate to collections formed by persons preferring to remain mute, seldom publishing any of their knowledge, which in many cases can be extensive.

These collectable Cents covers are frequently used in exhibits to present examples of rates, but rarely does any exhibit go beyond rates in developing postal history. Only occasionally is additional information from these covers available to the general collecting community, commonly by an appearance in a publication with a brief review by the owner or at public dispersal sales. Accordingly, collectable covers can at best be used for two purposes-rate studies and prices realized. However, collectable covers only compose 15-20% of the total Cents covers. There remain hundreds of covers rarely seen outside the auction room, being generally held by non-exhibitors (many exhibitors also hold them but seldom admit it). These are the unexplained rate covers, the covers with untied stamps, the torn, the faded, the commonplace, the huddled masses of Cents covers-the "others". These are the covers located in the collection of the person who "just wants one cover franked with each of the Cents stamps".

I purchased a small number of these "other" Cents covers and I became captivated. They didn't appeal to the eye but they sure were informative. Considering their provenances consisted of being frequently passed from one owner to another they were somewhat reluctant to become friends, but over the months after I placed more of their traveling companions with them and, perhaps more importantly, after elevating them to an equitable status as their "collectible" associates, they began to enlighten me with their stories and I became a fascinated listener. Many of my Newfoundland postal history questions were answered by these less notable Cents covers as not only did they reveal how they were transported, by whom they were written, etc. but their information complimented and added to that previously acquired from the more celebrated collectible covers in my possession. Gradually the analogy formed in my mind; this period of Newfoundland postal history is a 1000 piece picture puzzle with each cover representing a piece. No cover, collectible or "other", is more important than another to the final picture as each has its contribution to make. The more covers assembled the more fully developed the picture becomes. How much postal history could be learned if all the covers were in one location? Needless to say I was agonizingly aware I would never conceivably possess even a small fraction of the total Cents covers. However, I was also aware of others who had compiled censuses, complete with photographs, of covers from other countries so why not the Newfoundland Cents covers?

Within these pages are 980 recorded covers franked with at least one of the New York Printings of which 680+ have photographs. They are not all here; hopefully they never will be as the finding of a previously unrecorded cover remains one of the pleasures of the hobby. By inserting the many photographs it is hoped much use can be derived by various users extending from newcomers to this collecting area to advanced collectors using it for their specific specializations to auction lotters seeking accurate descriptions. To those relatively new to this period an admonition is offered: do not be discouraged by the seemingly endless lists of covers. Locate several covers and you will have initiated yourself into a very select group-the Cents covers devotees. To those users already possessing advanced expertise in this area it is hoped you will obtain sufficient new information to sustain your interests.

Doing this compilation has been a labor of love. Many, mentioned in the previous pages, have assisted and all hope the work will be beneficial to some degree in advancing the exposure of these fascinating covers and this interesting time in Newfoundland's postal history to other collectors present and future. From experience I have learned the hobby of postal history study can be as fascinating as one wishes to make it. All the answers vis-à-vis the Newfoundland New York Printings are not disclosed within the pages of this book. To be sure, most that avail themselves of this study will come
(Concluded Next Page)

THE NEWFIE NEWSLETTER
OF THE NEWFOUNDLAND STUDY GROUP OF BNAPS

Number 108

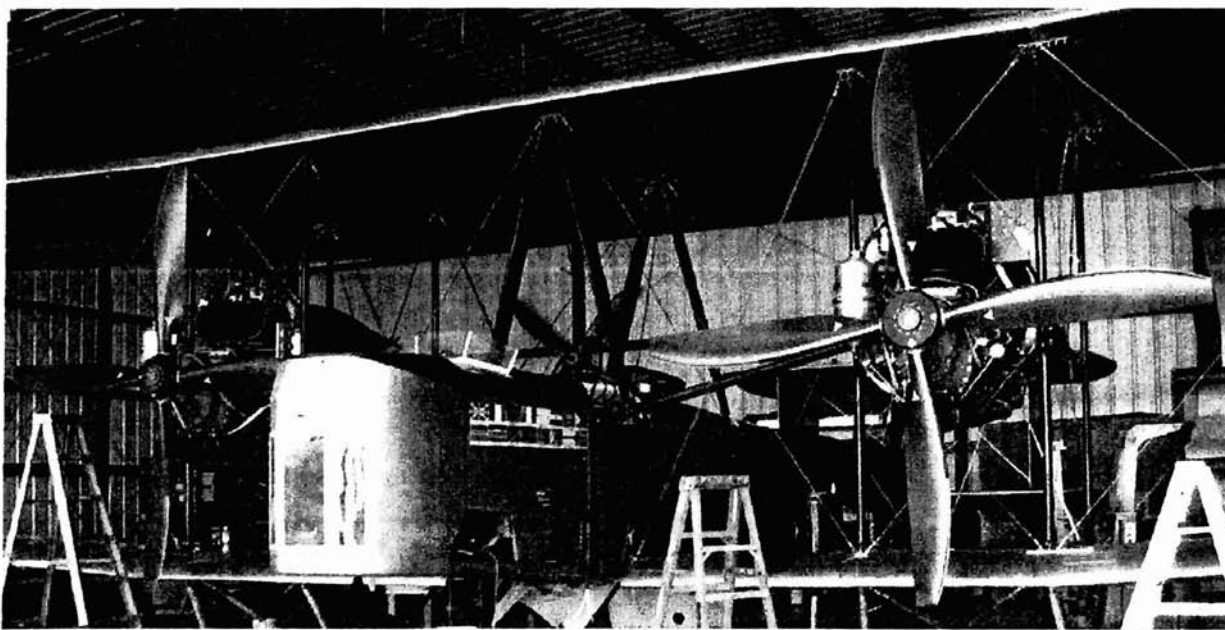
September/October 2004

SAMMY WHALEY'S INTRODUCTION (Concluded)

away with additional questions to replace each one answered. No doubt many users will query facts or conclusions reached herein. If that be the case the intended purpose in doing the project will have been achieved. This effort is meant to create interest. Have a look at the covers then go a little farther by inspecting the personalities: the Watts, the Moors, the Smiths; date the cancels and put a location to them; find new ways mail was transported; learn the time frame for the usages of each stamp; most importantly make new discoveries I haven't even considered; prove me erroneous in my assumptions and conclusions. But whatever you do, utilize the book and enjoy the covers of Newfoundland's New York Printings.

Sammy Whaley
P.O.Box 235
Opp, Alabama
April 03, 2004
Onycha2@aol.com

VICKERS VIMY ATLANTIC FLIGHT UPDATE



Vimy in a hangar in Novato, California, July, 2004 with new Orenda engines installed

I was finally able to get an update on the plans to recreate the 1919 Alcock-Brown flight. (See *Newsletters #98 & 99 for previous installments*). John LaNoue is the Vimy chief engineer. On July 25th he told me it was only days away from a test of the newly installed Orenda 600hp engines. If the tests are successful, practice flights over Marin and Sonoma Counties will follow shortly.

The problem with this venture has been money. Now LaNoue says there is now a possible sponsor or two interested in funding the project, with the goal of a flight from St. John's to Clifden, Ireland in early summer, 2005. The project has a website, www.vimy.org but the last news release of April, 2004 does not reflect current aspirations. With a sponsor the Vimy would continue to reside here until ready to head for Newfoundland around spring of next year.

LaNoue is a one-man band on the project at this point, and focused only on engineering concerns. Hopefully, when a sponsor arrives I can find someone with whom to seriously consider our desires for a small mail to be carried on the flight....*The Editor*

**THE NEWFIE NEWSLETTER
OF THE NEWFOUNDLAND STUDY GROUP OF BNAPS**

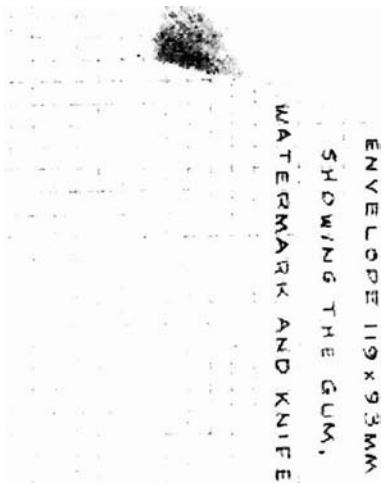
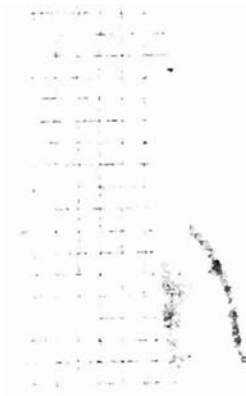
Number 108

September/October 2004

NEWFOUNDLAND'S POSTAL STATIONERY 1873-1941 – Horace Harrison

Page 39

ENVELOPE 119 x 93MM SHOWING THE GUM, WATERMARK AND KNIFE



KENT
JOBKEX WITTT
ORIGIMAT

**THE NEWF. NEWSLETTER
OF THE NEWFOUNDLAND STUDY GROUP OF BNAPS**

Number 108

September/October 2004

* **Financial Statement as of August 15, 2004**

	Item	Debit	Credit
Aug 15, 2003	Balance Forward from Previous Year		\$1,315.65
	Service Charges (Cheques, etc.)	2.85	
	Bank Interest		0.00
	BNAPS Stipend and Memberships <small>(applies to 2003/2004 memberships)</small>		213.00
	44 Membership dues <small>(27 memberships were paid in advance in 2002/2003)</small>		572.00
	0 Membership dues paid in arrears		0.00
	3 Membership dues paid in advance		39.00
	Donations		150.47
	Newsletter Postage (6 issues)	363.62	
	Paper and Copying	918.56	
	Misc. Stationary and Postage	121.75	
	Totals	\$1,406.78	\$974.47
Aug 15, 2004	Balance on hand		\$883.34

-----x----- **Membership Application / Change of Information Form** -----x-----

Your dues are currently paid through 2004-2005.
No payment is required at this time.

BNAPS Newfoundland Study Group

Name: _____

Address: _____

Postal Code: _____ **E-Mail:** _____

Telephone: (Home): _____ (Office): _____

Annual dues: **\$13.00** (Canadian Dollars)
 \$10.00 (US Dollars)
 £6.50 (British Pound)

Please make your cheque or money order payable to:
BNAPS Newfoundland Study Group
care of the Treasurer
Martin Goebel, 13 O'Mara Place, St. John's NL A1A 5B7, Canada
Goebel@nf.sympatico.ca

*All new members are requested to kindly remit this form for our accounting and mailing purposes.
Thank you!*