

**THE NEWFIE NEWSLETTER  
OF THE NEWFOUNDLAND STUDY GROUP OF BNAPS**

---

**Number 102**

**September/October 2003**

**EDITOR'S COMMENTS**

**THIS ISSUE**

Page 2-3	Robert A. Lee May Auction – Selected Results
Page 4	Gibbons 1910 Circular Offers “Crude” Guy Issue
Page 5	One Beautiful Advertising Cover – Ron McGuire
Page 6	Dean Mario Wins Pratt Award, & New Exhibit Book
Page 7	Would you Pay £ 631 For This Newfoundland Set? & Sammy Whaley’s Upcoming BNAPEX Presentation
Page 8	Is this the Earliest PC2? --- Rob Moore
Page 9	Newfoundland Postal Stationery 1873-1941, Page 33 --- Horace Harrison
Page 10	Newfoundland Study Group Annual Financial Statement – Martin Goebel

---



**COLOR PAGE**

See Page 5 for a beautiful coloured envelope belonging to Ron McGuire – “...one of the few coloured envelopes used in Newfoundland...” according to Ron.

---

**‘FANTASY’??**

The “air mail” set pictured on Page 7 was recently run as an ebay lot, drawing a lot of attention and fire. I’d originally written three pages about it for the newsletter, but then decided to go for a wider distribution. Linn’s Stamp News has agreed to run the piece. It has a distribution of some 45,000 copies. I felt as many people as possible should be aware of this set, just created and printed by Gerry King, a producer of “Cinderella” sets. By agreement with Linn’s I cannot run the complete article here until after they first run it. I’m writing this in late July, and they have not yet published it. The short squib on Page 7 should provide enough of a warning.

---

**BNAPEX2003**

On the bottom of Page 7 you’ll find several paragraphs on the **Newfoundland Study Group Workshop at BNAPEX2003** in London, Ontario. I generally attend every other BNAPEX and won’t be there this year, but **J. Don Wilson** will chair the event. Please attend and support Sammy and Don!

---

**DUES**

Attached to this newsletter will be a notice of dues for most of you. Please attend to this as soon as possible and note Martin’s new address below. We’ve appreciated your payments in the past which have helped us to run more colour pages this year than possible before.

---

**SHOOT FOR THIS RECORD!!**

I provide lists of exhibit and literature awards to the BNAPS website, [www.bnaps.org](http://www.bnaps.org) and was pleased to recently notice a first! Randall Martin, of our group, won **Four Gold Awards** at one A.P.S. show, ROPEX 2003, held in Webster, New York last June. His awards came for a multi-frame exhibit on “Newfoundland Surface Mail” and three single frame exhibits on the pre-confederation postal history of New Brunswick, Nova Scotia, and Prince Edward Island. Congratulations is certainly due Randall!!

---

Chairman/Editor: Norris (Bob) Dyer, 1708 Granada Court, Petaluma, Ca 94954 [nrdyer@comcast.net](mailto:nrdyer@comcast.net)  
Treasurer: Martin Goebel, 13 O’Mara Place, St. John’s, Newfoundland A1A 5B7 [goebel@roadrunner.nf.net](mailto:goebel@roadrunner.nf.net)

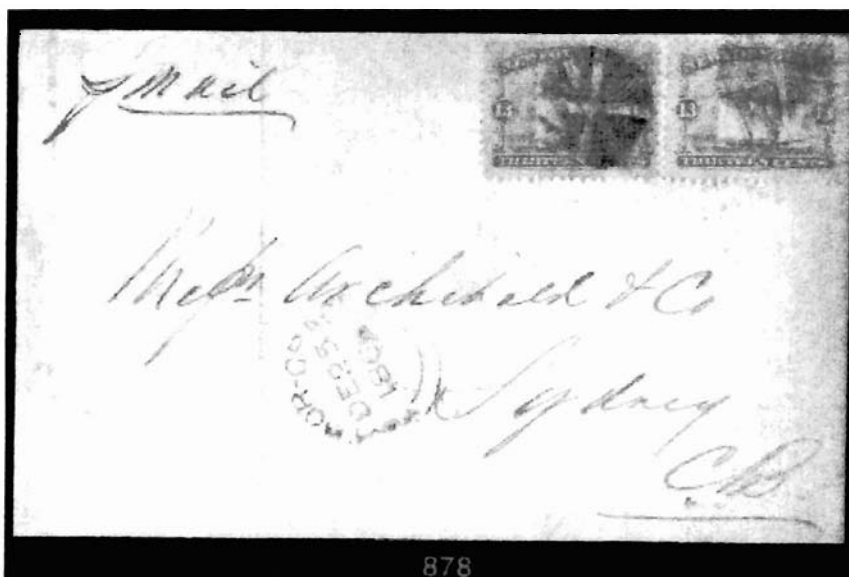
**THE NEWFIE NEWSLETTER**  
**OF THE NEWFOUNDLAND STUDY GROUP OF BNAPS**

**Number 102**

**September/October 2003**

**ROBERT A. LEE AUCTION, MAY, 2003 -SELECTED RESULTS**

Here are a few lots from the May 17<sup>th</sup> auction with original estimates and prices realized. Descriptions have been edited. Prices are in Canadian dollars but *do not* include the 10% buyer's premium. Note the frequent disparities between estimates (when provided) and prices realized.



**POSTAL HISTORY**

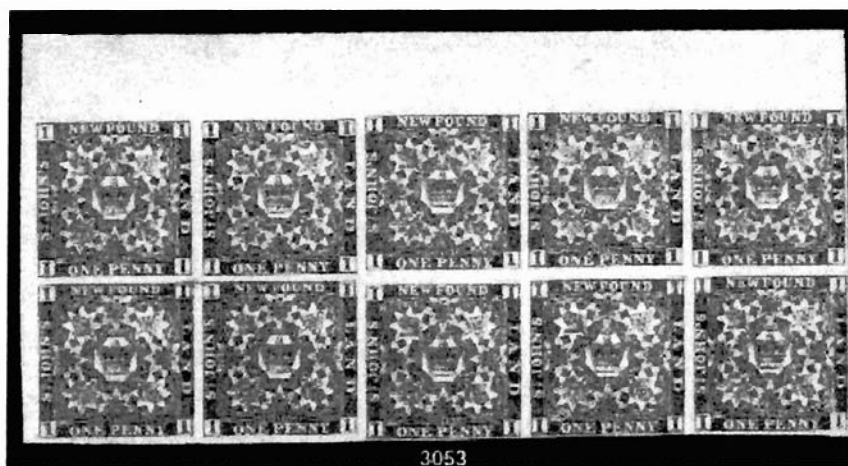
878. Harbor Grace DE 25 1866 with 2 X 13¢ (photo above) to Sydney, C.B. Rare double weight letter from interior to first port rate. **EST. \$4,000 REALIZED \$6,000**
880. St. John's Paid red ink split circle on QUEEN INSURANCE COMPANY to Harbor Grace MY 28 1870 with 5¢ black seal (#26). **EST. \$500 REALIZED \$675**
882. Greenspond DE 15 1870 with 12¢ pale red brown queen (#28) w/grid bar cancel, not tied, to England **EST \$100 REALIZED \$230**
883. St. John's to Fortune Bay, indistinct date on blue cover with 3¢ vermilion (33), back flap missing Pratt census – used 18 May 1873 **EST. \$200 REALIZED \$200**
885. Harbour Grace OC 6 187(4) with pair 3¢ blue Victoria (#34), one faulty to England. **EST. \$200 REALIZED \$230**
886. Channeli APR 5 1876 lovely fancy cds free strike on cover with 6¢ dull rose (#35) to Boston, edge tears, part of back flap missing. **EST. \$100 REALIZED \$210**
896. St. John's JU 10 86 split circle free strike with #53 tied by "235" to Cape Breton, slight fold through stamp. **EST. \$190 REALIZED \$190**
897. St. John's DE 29 89 with 3¢(#49i) tied by "235" to Little Bay Island **EST. \$50 REALIZED \$200**
898. St. John's JY 13 89 with tied cancel with 3 X #42 (pair and single) to Harbor Grace. **EST. \$100 REALIZED \$240**
903. St. John's MR 31 97 with 5¢ seal (#54) on vf "Define & O'Mara printers and publishers" c.c cover to Copenhagen Denmark. RARE DESTINATION. **EST. \$200 REALIZED \$240.**
908. Hoosick Falls N.Y. 97 NOV 27 receiver with 1¢ on 3¢ Victoria (#77), no dispatching cancel but nice purple FORWARDED. RARE USE OF SETTING "C" ON COVER. **EST. [NONE] REALIZED \$450**
913. Bay Islands SP 21 99 with #60 and #67 tied to Heidelberg, Transvaal, South Africa. Has boxed MAIL SERVICE SUSPENDED & via DLO Capetown to boxed purple ink Dead Letter Office/ JUL 18 1900/ St. John's N.F. Boer War cover. **EST. \$500 REALIZED \$375**
920. Main River "Custom Seal" with #83 tied by smudge cancel to "Nardini" at Main River. Referred to by Boggs Page 170. **EST. \$100 REALIZED \$160**
926. Battle Harbor, Labrador JU 22 21 with 2¢ Caribou and second copy bisected (faulty) for 3¢ rate to Moncton, N.B. **EST. \$50 REALIZED \$50**
927. Tacks Beach MR 11 22 with 2¢ Caribou and second bisected for 3¢ rate to Ayre & Sons. **EST. \$40 REAL. \$70**
930. DEAD LETTER BRANCH GPO "ON POSTAL SERVICE" " RETURNED LETTER/2/CENTS DUE" with pair 1¢ postage due tied by grid cancel to Pilleys Island. **EST. \$50 REALIZED \$150**

**THE NEWFIE NEWSLETTER**  
**OF THE NEWFOUNDLAND STUDY GROUP OF BNAPS**

**Number 102**

**September/October 2003**

**LEE AUCTION (CONCLUDED)**



3053  
STAMPS

3053. Block of ten of #1 (pictured above), 6NH. **REALIZED \$825**  
 3067. #11A 3d mint triangle of four, 2NH, VF+. **REALIZED \$350**  
 3083. #18, 4d sheet of 20, NH, VF. **REALIZED \$450**  
 3097. #24a, 26, 27a, 28a, 29, 30a – 1865-1870 early cents used. Selected examples. **REALIZED \$200**  
 3107. #41, Mint block of four, Price of Wales, NH. VF. **REALIZED \$475**  
 3110. #46 2¢ codfish, right selvedge block of 4 with “double perfs”, NH, VG. **REALIZED \$100**  
 3114. #58, ½¢ black Nfld. dog, lower selvedge block of 12, with full imprint, 3NH, F-VF. **REALIZED \$100**  
 3116. #61-63, 65-66, 74, Cabot blocks of four, majority NH. **REALIZED \$110**  
 3117. #61-74, Cabot Issue, mint, LH, F-VF. **REALIZED \$80**  
 3118. #75, 76, 1¢ surcharges, Type I & II in LL block of 6, includes IIa, lower left, 5NH, 1H, VG. **REALIZED \$200**  
 3121. #83a, Queen Alexandra, vert. Pair imperf. horiz. Lt. Crease between stamps, 1NH. VF. **REALIZED \$190**  
 3122. #83b, Queen Alexandra, used imperf. vert. Pair on C.B. Railroad NO 23 01 with cert. **REALIZED \$200**  
 3129. #98-103, 1911 Guy Issue, mod. HR, VF-VF+ **REALIZED \$240**  
 3136. 17 Caribou selvedge blocks, 5 X 1¢, 4 x 2¢, 5 x 3¢, 1 x 10¢, 1 x 24¢ & 1 x 36¢. **REALIZED \$325**  
 3137. #115-26, Trail of the Caribou, LH, F-VF. **REALIZED \$80**  
 3140. #127-30, 1920 surcharges, H-HR, F-VF (#128 VF). **REALIZED \$150**  
 3143. #127, 2¢ on 30¢, mint strip of 5 with “slanting surcharge” variety, NH, VF. **EST. \$300 REALIZED \$800**  
 3144. #127a, 2¢ on 30¢, inverted surcharge, signed on reverse, hinged, fine. **REALIZED \$475**  
 3149. #145-159, 1928 Publicity Issue, mint blocks of 4, NH, F-VF. **REALIZED \$280**  
 3201. #C13-17, Labrador, singles, mint H-HR, F-VF **REALIZED \$75**  
 3207. WAYZATA air mail, 1932, complete sheet of 20, NH, VF. **REALIZED \$450**  
 3208. #J1-6, 1939 postage dues, blocks of four, each two NH, 2 LH, VF. **REALIZED \$85**  
 3209. #J1-6, in used blocks of 4, each with neat double ring cds. VF **REALIZED \$130**  
 3210. #OX1 Edward Officially Sealed, used block, top 3 stamps w/usual crease, some staining. F-VF centered  
 Believed to be largest known multiple. **REALIZED \$4750**  
 3551. NFR10a, 25¢ blue 1903 Edward inland revenue, block of 8, 7 unwatermarked, described as largest  
 multiple known, VF. **REALIZED \$775**  
 3553. NFR13 \$5 1903 Edward inland revenue, used, light cork cancel, VF. **REALIZED \$170**  
 3554. NFR14 \$50 1903 Edward inland revenue, used, VF. **REALIZED \$325**  
 3555. NFR15 \$100 1903 Edward inland revenue, used, perf. 12, VF. **REALIZED \$160**  
 3577. NFR34 \$50 orange 1938 first caribou inland revenue, used, grid bar cancel, VF. **REALIZED \$180**  
 3578. NFR35 \$100 claret 1938 first caribou inland revenue, used block of 4, pen cancel, superb. **REALIZED \$800**  
 3579. NFR35 \$100 claret 1938 first caribou inland revenue, used single, F-VF. **REALIZED \$230**  
 3586. NFR44 “5” on 25¢ green 1963 caribou inland revenue provisional, mint block of 4, NH, VF. **REALIZED \$425**  
 3588. NFR46-53, 5¢-\$20 1967 third caribou inland revenue, mint selvedge imperf. horizontal pairs, NH VF.  
 Gorgeous set! **REALIZED \$2000**

**THE NEWFIE NEWSLETTER  
OF THE NEWFOUNDLAND STUDY GROUP OF BNAPS**

**Number 102**

**September/October 2003**

**GIBBONS 1910 STAMP CIRCULAR OFFERS "CRUDE" GUY ISSUE**

**GIBBONS STAMP CIRCULAR.**

**NEWFOUNDLAND GUY ISSUE.**

We understand that this crude issue is shortly to be replaced by a series of designs more worthy of this Colony. Various correspondents have called our attention to two errors which occur on the 6c stamp. The first being that the portrait labeled "Lord Bacon," whereas as a matter of fact the gentleman was Sir Francis Bacon. The second error does not occur on all the stamps, thus making two varieties of this stamp, one with the "z" of colonization normal and one with the "z" reversed. All of our stock consists of the latter. Prices, postage extra—

1c green, King James I. ....	\$0 02
2c red, London & Bristol Co. ....	04
3c olive-brown, John Guy .....	06
4c violet, Guy's ship, the "Endeavour" .....	06
5c ultramarine, Town of Cupids.....	08
6c purple, Lord Bacon .....	10
8c pale brown, Town of Mosquito.....	12
9c olive green, Logging Camp .....	12
10c slate-purple, Paper Mills .....	14
12c purple-brown, King Edward VII.....	16
15c greenish-black, King George V.....	20

**GIBBONS 1911 CATALOGUE.**

Part I. British Colonies (ready in December) .60 postfree 70c  
Part II. Foreign Countries (now ready).....60 postfree 73c  
Both parts ordered and paid for at once.....1.00 postfree1.25c

**STANLEY GIBBONS, Inc.,**

**198 Broadway, New York.**

Guy set for \$1.10, or get a Gibbons 1911 Catalogue for \$.60!!!

**THE NEWFIE NEWSLETTER  
OF THE NEWFOUNDLAND STUDY GROUP OF BNAPS**

**Number 102**

**September/October 2003**

**ONE BEAUTIFUL ADVERTISING COVER!!! – Ron McGuire**



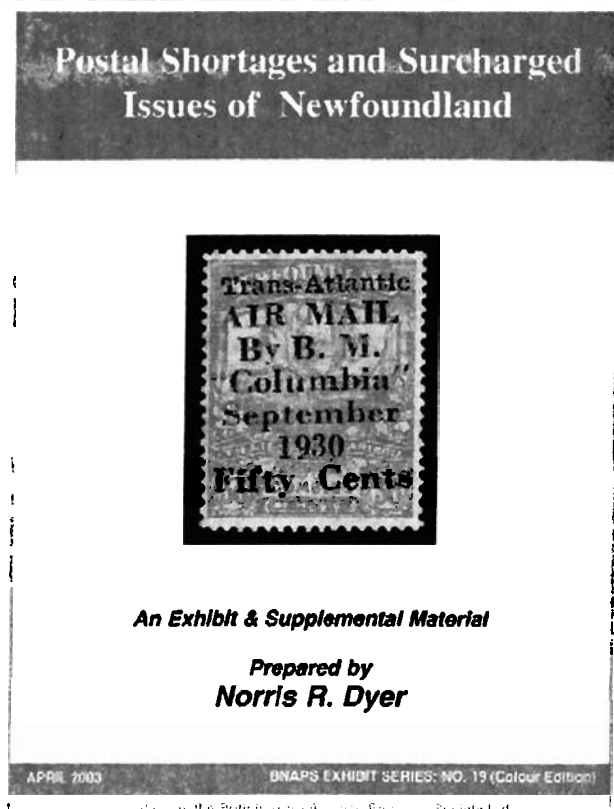
Large firms with international distributions often produced envelopes depicting their line of products...The recipients would have their name, address etc, either printed on the envelope or added with a rubber stamp. Fry, the British confectioner was one such firm. I have three different examples, all in glorious colour. Two were used by Canadian firms and the third is above, depicted open, to show the backs and printed matter franking. Soper & Moore, the St. John's wholesale grocers added their name with a rubber stamp in blue-green ink. It is one of the few coloured envelopes used in Newfoundland of which I am aware. It's certainly one of the nicest examples from the Pike correspondence (see my article in the PHSC Journal, #34.)

## **DEAN MARIO WINS PRATT AWARD**

Group member and frequent contributor to the Newsletter, Dean Mario, has won this year's Pratt Award, given by the Collectors Club of Chicago. The award is named after Robert H. Pratt, eminent Newfoundland collector, researcher and author. In 1997 the Club started given the award annually to the author or authors of the best philatelic article(s) on Newfoundland philately. The award consists of \$1,000.

Dean won the award for his two articles published in *BNA TOPICS*, "Newfoundland's 'FS' Handstamps" in Vol.59 #3, and "Newfoundland's 1919 Sudan Booklet – Bogus or Bana Fide?" in Vol. 59 #4. You may recall, Dean first raised doubts about the "booklet" in the Newsletter.

This is the second time Dean has won "The Pratt".



Auxano Philatelic Services, Inc. has released an expanded version of my six-frame exhibit – in colour. *I don't get a cut from the sale of the 112-page book or I wouldn't be mentioning it!* It was originally released in 2000. In this longer one you have 35 new additions, numerous updates (and corrections, of course!). It's a chance to see this Newfie exhibit which is now retired. (It won four Golds at A.P.S. national shows and twice at BNAPEX.)

Contact Auxano at (403) 543-1171, or [info@auxanostamps.ca](mailto:info@auxanostamps.ca) List is C\$59 for colour or C\$29.95 black-and-white. A discount is available for BNAPS members.....

*--The Editor, trying to be modest*



**THE NEWFIE NEWSLETTER  
OF THE NEWFOUNDLAND STUDY GROUP OF BNAPS**

**Number 102**

**September/October 2003**

**WOULD YOU PAY £631 FOR THIS NEWFOUNDLAND SET?**



**Alert!! This is a set *recently created* based upon two 1919 air essays. Do not be fooled!!! It ran on ebay but was pulled by the seller at the last moment. *LINN'S STAMP NEWS* has agreed to publish my article on this farce. I plan to run it in the Newsletter with their permission, after they first publish it. It may already have been printing before you receive this newsletter.**

**SAMMY WHALEY WILL PRESENT AT BNAPEX2003**

If you can make BNAPEX2003 in London, Ontario, please attend the Newfoundland Study Group Workshop. It will be from 1:30 to 2:30 P.M., on Thursday, September 25<sup>th</sup>. J. Don Wilson will chair as I will be unable to attend this year.

Sammy Whaley will give a brief synopsis of Newfoundland postal history prior to 1897. He will also show a few items from his material including a stampless cover with a rare Robinson and Brookings forwarding agents handstamp of which fewer than eight are recorded, a couple of Pence stamps on cover paying Cents rates, some seldom seen 1 & 2¢ Roulette covers as well as other items. He will also update the group regarding progress made on the New York Printings (Cents) census.

Sammy reminded me to tell you that if anyone would like to present some topics or show some items, he would be welcome to share the spotlight with you.

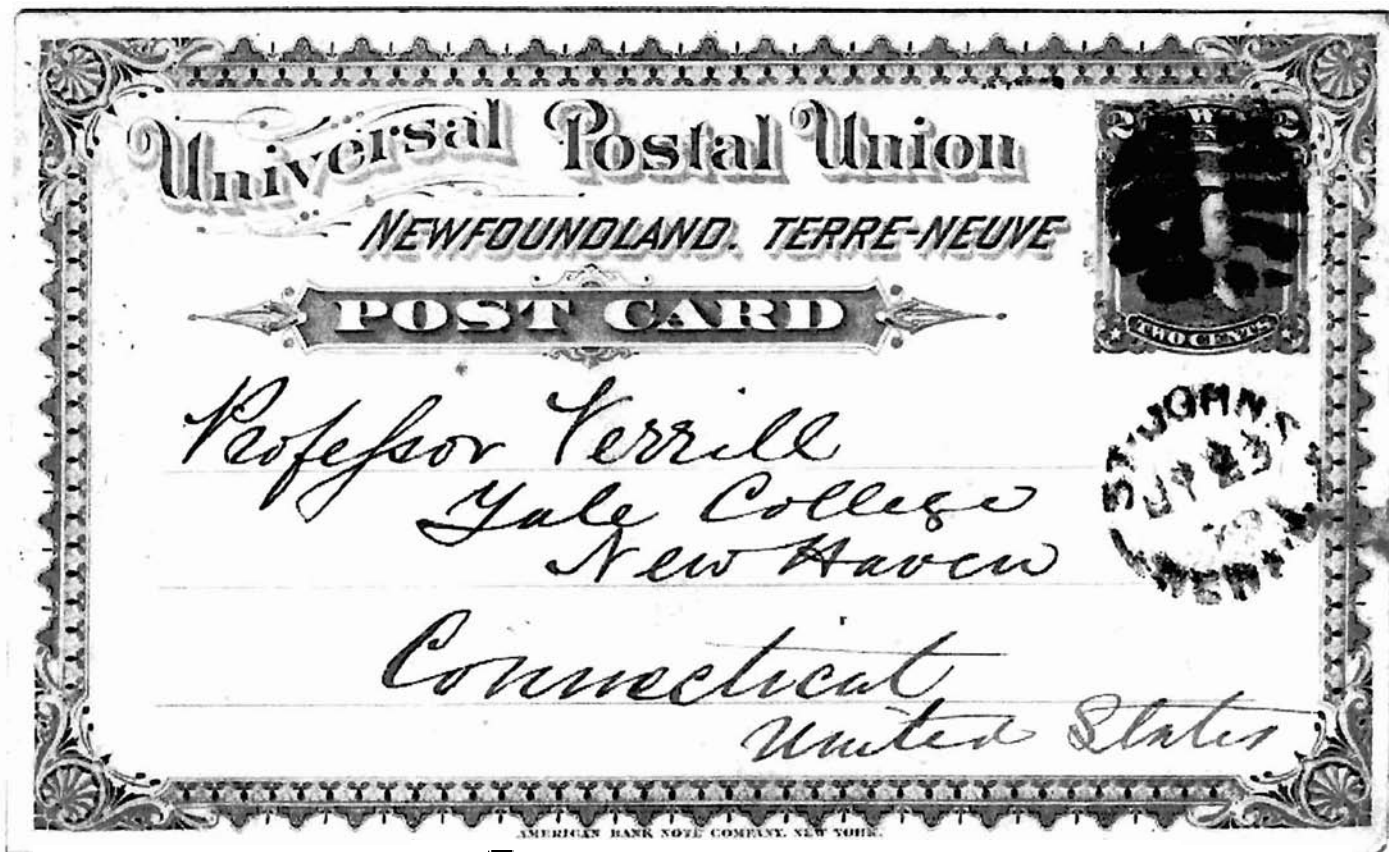
You can contact Sammy at [onycha2@aol.com](mailto:onycha2@aol.com)

**THE NEWFIE NEWSLETTER  
OF THE NEWFOUNDLAND STUDY GROUP OF BNAPS**

**Number 102**

**September/October 2003**

**IS THIS THE EARLIEST PC 2?**



**PC 2 postmarked JY 23 79**

Rob Moore, a Group member from St. Pearl, Newfoundland sent this picture of a PC 2. There is a dispute in the literature about the earliest known usage of this U.P.U. card. The expert in this area was Horace W. Harrison, whose exhibit *NEWFOUNDLAND POSTAL STATIONERY, 1873-1941* has been running in the Newsletter. In Page 13, on the first U.P.U. card, Harrison reports:

**Earliest reported postmark, 27 June, 1879**

But that is not the end of the debate. On the *immediately preceding page*, Harrison had stated:

**The earliest reported postmark is JY 26, 79 as of 7-97**

Obviously one of the dates is in error. The 27 June date comes from Robert Pratt (**BNA Topics**, September/October, 1984). In a response to Pratt's article, Bill Walton wrote:

An ERP of July 26, 1879 has been recorded for P2. Pratt cites a usage on June 27, 1879, and *confirmation of this* would amend the ERP. (Editor's italics)

A subsequent lack of "confirmation" may have contributed to the conflict in Harrison's exhibit.  
**Any ideas, out there? Write the Editor.**



**THE NEWFIE NEWSLETTER  
OF THE NEWFOUNDLAND STUDY GROUP OF BNAPS**

**Number 102**

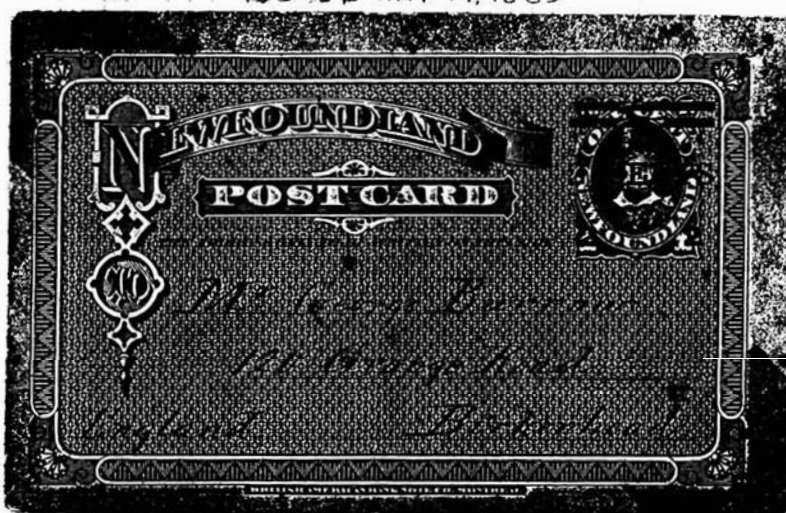
**September/October 2003**

**NEWFOUNDLAND'S POSTAL STATIONERY 1873-1941 – Horace Harrison**

**Page 33**

THE POST OFFICE DEPT HAD 700 1¢ CARDS SURCHARGED 2¢  
IN THE SPRING OF 1889 TO MEET A TEMPORARY SHORTAGE OF  
2¢ U.P.U. CARDS. WEAK LEFT "T" ARM CONSTANT,

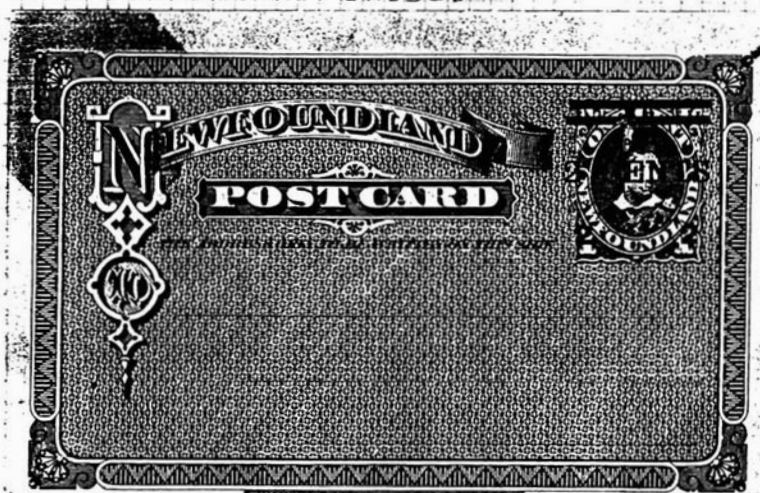
ISSUED MAY 14, 1889



WEAK "T"  
CARD  
PLATE  
POSITION  
SIX



BACKSTAMPS  
W  
UNUSED



WEAK "T"  
CARD  
PLATE  
POSITION  
EIGHT

\* Note, two other cards were sent to George Burrow, same day with similar markings

**THE NEWFIE NEWSLETTER  
OF THE NEWFOUNDLAND STUDY GROUP OF BNAPS**

**Number 102**

**September/October 2003**

**Financial Statement as of August 15, 2003**

	Item	Debit	Credit
Aug 15, 2002	Balance Forward from Previous Year		\$915.50
	Service Charges (Cheques, etc.)	2.85	
	Bank Interest		0.00
	BNAPS Stipend and Memberships <small>(applies to 2002/2003 memberships)</small>		187.00
	60 Membership dues <small>(4 memberships were paid in advance in 2001/2002)</small>		780.00
	0 Membership dues paid in arrears		0.00
	27 Membership dues paid in advance		351.00
	Donations		139.12
	Newsletter Postage	361.63	
	Paper and Copying	648.38	
	Misc. Stationary and Postage	44.11	
	Totals	\$1,056.97	\$1,457.12
Aug 15, 2003	Balance on hand end of this year		\$1,315.65

-----MEMBERSHIP APPLICATION / RENEWAL FORM-----

**BNAPS NEWFOUNDLAND STUDY GROUP**

**Name:** \_\_\_\_\_

**Address:** \_\_\_\_\_

**Postal Code:** \_\_\_\_\_ **E-Mail:** \_\_\_\_\_

**Telephone:** (Home): \_\_\_\_\_ (Office): \_\_\_\_\_

Annual Fee:                      \$13.00    (Canadian Dollars)  
    \$10.00    (US Dollars)  
    £6.50     (British Pound)

Please make your cheque or money order payable to:

**BNAPS Newfoundland Study Group**

care of the Treasurer

Martin Goebel, 13 O'Mara Place, St. John's NL A1A 5B7, Canada

**Goebel@roadrunner.nf.net**

*All new members are requested to kindly remit this form for our accounting and mailing purposes.  
Thank you!*