

**THE NEWFIE NEWSLETTER**  
**OF THE NEWFOUNDLAND STUDY GROUP OF BNAPS**

**Number 90**

**September/October 2001**

**EDITOR'S COMMENTS**

**THIS ISSUE**

Page 2	The 1 Cent Green Cabot --- Colin D. Lewis
Page 3-6	1939 Royal Visit Re-visited --- Dean Mario
Page 7	Moon Listings (Continued) ---- Mike Sagar
Page 8	Newfoundland's Postal Stationery, Page 21 --- H. Harrison
Page 9	Study Group Financial Statement and Membership Form



**Notice to Members:**

In the next issue (last one for 2001) I plan to include the membership list of the Newfoundland Study Group. The list shows 73 members. The list was last run at the end of 1999, with 74 members. Names and addresses will be shown. If you do not want your address included, please contact me at address below by October 10<sup>th</sup>. A belated welcome to new members in 2000 & 2001 – Chistopher Anstead, peter de Groot, David Eisenhauer, Robert Hounsell, Thomas Manning, Lyall McCurdy, C.R. McGuire, W.J. (Joe) Schlitt, Jesse Spector, and Sammy Whaley. And some of you thought there are no *new* Newfoundland collectors! **Note: we are starting to collect dues for 2002 (page 9.) An X in the box means dues are due. Because members in the past have complained that cutting out application led to loss of a choice item on the flip side, Page 10 has been left intentionally blank. The optional of going to 12 pages would have caused postage problems.**

**AUCTIONS RESULTS -- MATTHEW BENNETT, NEW YORK, JUNE 24, 2001**

Results are in U.S. dollars and do not include 10% Buyer's premium.

LOT #	DESCRIPTION	HAMMER PRICE
578	1860 4d Orange-vermilion, used, large margins, with certs.	550
580	1860 6d Orange-vermilion, used, nice margins, cert.	550
582	1897 Provisionals, Pos. 36-40 and 46-50, mint, 5 Type 1 (1 NH) 3 Type II, 2 Type III (1 NH), only fine centering as usual	600
583	1919 Hawker air mail, LH, VF centering, certs	\$9,500
584	1929 De Pinedo air mail, LH, Superb centering, certs	19,000
586	1929 THREE CENTS inverted surcharge, LH, VF	650
588	1930 Columbia air mail, NH, VF, cert	6,500
589	1932 DO-X air mail, inverted surcharge, LH and VF, Bloch	9,000
590	1933 Balbo air mail, block, 3 hinged, 1 NH, F-VF, cert	550
591	1938/70 5¢/\$20 Caribou Inland Revenues trial proofs+ 2 <sup>nd</sup> \$1 affixed on sheet from Bradbury Wilkinson. Probably unique.	1,400

**Support our Dealer Members:**

J.C. Michaud, Box 31248, Halifax, Nova Scotia, B3K 5Y1

Gary Douglas, 2675 Hayfort City, Mississauga, Ontario, L5K 1P8

R.L. McGillivray, Stanley Stamps, 1096 Richard's St. Vancouver, B.C. V6B 3E1

John Jamieson, Saskatoon Stamp Center, P.O. Box 1870, Saskatoon, Saskatchewan, S7K 3S2

Chairman/Editor: Norris (Bob) Dyer, 1708 Granada Court, Petaluma, Ca 94954 [nrdyer@home.com](mailto:nrdyer@home.com)

Treasurer: Martin Goebel, 79 Highland Dr., St. John's, Newfoundland, Canada A1A 3C3

**THE NEWFIE NEWSLETTER**  
**OF THE NEWFOUNDLAND STUDY GROUP OF BNAPS**

**Number 90**

**September/October 2001**

**The 1 Cent Green Cabot**

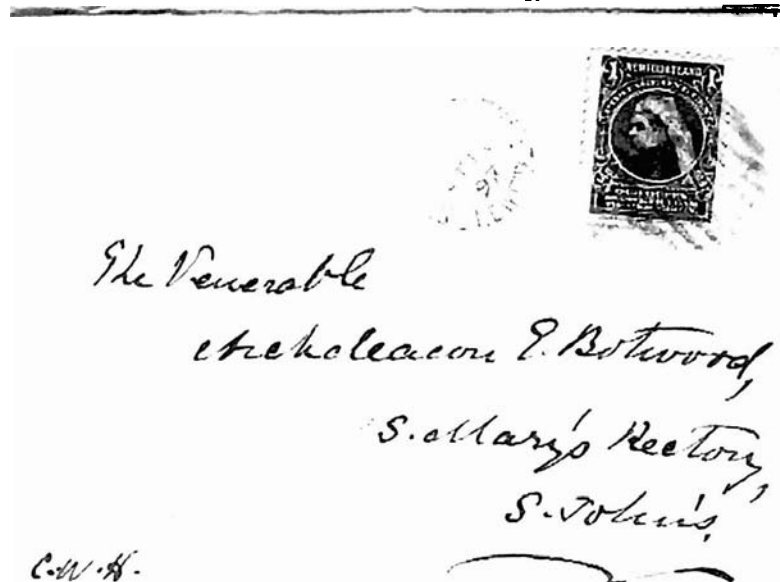
I have always been puzzled over the relevant scarcity of this stamp, paying the correct one cent drop letter rate within the period of its availability. The stamp was issued as the lowest value in the set jointly commemorating the 400<sup>th</sup> Anniversary of Cabot's Discovery of Newfoundland and the 60<sup>th</sup> Year of Queen Victoria's Reign.

A total of 400,000 stamps were issued and placed on sale on June 24 1897. By late September the stock had been exhausted and the well known Provisional issues and Paid All handstamp were quickly produced to meet the shortage of stamps to pay the drop letter rate. Effectively, this means that correct use of this stamp within the available period of issue was for just three months.

During my lengthy interest in Newfoundland Postal History I have found just two covers paying this rate within the correct period. I am sure other study group members have correctly used copies on cover and I would be interested to hear of your holdings via the medium of this Newsletter.

Below is an example of correct usage of the issue and is on a cover mailed at St. John's Central on July 16 1897. The stamp is listed as USC/Sc 61, SG66 and W&B55.

Colin D. Lewis  
Swansea U.K.



**THE NEWFIE NEWSLETTER**  
**OF THE NEWFOUNDLAND STUDY GROUP OF BNAPS**

**Number 90**

**September/October 2001**

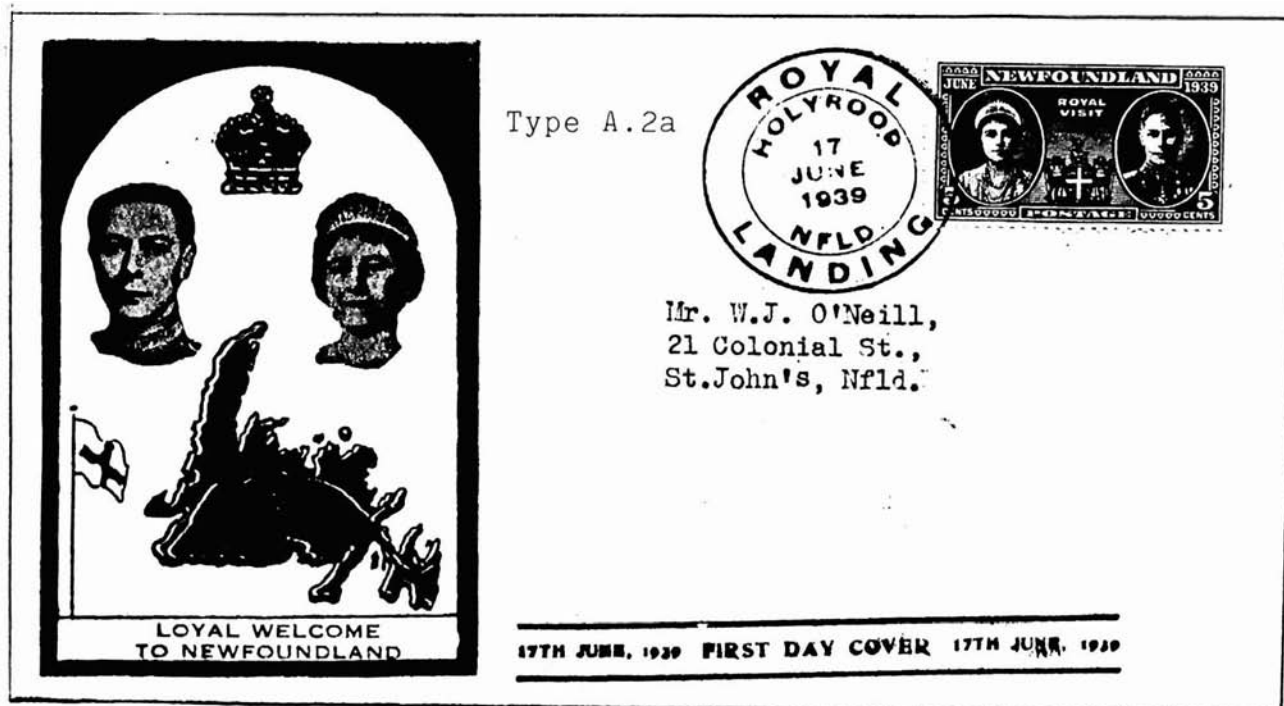
**1939 ROYAL VISIT RE-VISITED!**

**Dean Mario**

Thanks to the most welcome reports by Doug Hannan and Bob Dyer, another update to the previous 1919 Royal Visit Cachet articles can be made (see the previous Newsletter No. 81, Nov./Dec. '99 and No. 82, Jan./Feb. '00.)

- Type A. 2a -- Horizontal carmine handstamp
- Type A. 2b -- No carmine handstamp/blue "NFLD. TOURIST DEVELOPMENT...."
- Type A. 4 -- No cachet (*not shown*)
- Type A. 5 -- Blue border/flags red & blue/" **King George Sixth/Queen Elizabeth/First Day Cover**" in red; remainder in blue
- Type A. 6 -- Blue printing/alternating border dashes in red/blue/red (*reduced to fit*)
- Type A. 7 -- Large Nfld. coat of arms in red and gold, lettering in pink
- Type B. 3a -- Real photo of Queen Elizabeth (no stamp/cancel in this example)
- Type B. 11 -- Flags in red/blue/photos blue " **Royal Visit to...**" in red; " **First Day...1939**", blue
- Type B. 12 -- Printing in shades of blue
- Type B. 13 -- Real photo of Royal Family; green ink
- Type C. 1 -- Sandy Point large CDS cancel; blue ink handstamp
- Type C. 2 -- Real photo of " **Their Royal Highnesses Princess Elizabeth and Margaret**"; printed in blue ink/embossed
- Type C. 3 -- Deer Lake broken-circle cancel; " **Royal Visit...1939/God Bless.../L.P. Moss... Newfoundland**" in blue; " **First Day Cover**" in red; Newfoundland coat of arms and crown in gold

Members will note a new type will be added to the survey. Type C will include cachets which are not connected with either Type A or B cancellation types.



**THE NEWFIE NEWSLETTER  
OF THE NEWFOUNDLAND STUDY GROUP OF BNAPS**

**Number 90**

**September/October 2001**



**NFLD. TOURIST DEVELOPMENT BOARD  
ST. JOHN'S, NFLD.**

Type A.2b



Commemorating the Royal Visit  
of  
Their Gracious Majesties  
King George Sixth



Type A.5

Type A.6

*Mr Alex John*

Royal Visit to Newfoundland

June 17 - 1939



FIRST DAY COVER



**A7**

**Master Robert Charters  
Brampton, Ont.**

**THE NEWFIE NEWSLETTER**  
**OF THE NEWFOUNDLAND STUDY GROUP OF BNAPS**

**Number 90**

**September/October 2001**

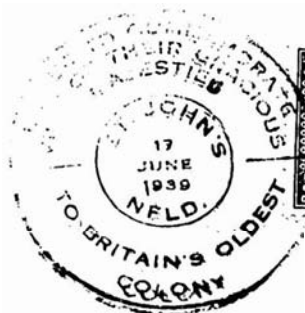
**Newfoundland  
Welcomes  
King George VI  
and  
Queen Elizabeth**

Type B.3a



*Mr. P. N. Bookman  
400 East Lake Ave*

**COMMEMORATING  
ROYAL FAMILY  
VISIT  
TO AMERICA**



Type B.13

**ROYAL VISIT  
to  
NEWFOUNDLAND**



Type B.11



**FIRST DAY COVER  
June 17th, 1939**

**THE NEWFIE NEWSLETTER  
OF THE NEWFOUNDLAND STUDY GROUP OF BNAPS**

**Number 90**

**September/October 2001**



Type B.12



**HENRY MORGAN & CO., LIMITED**

Type C.1

**NEWFOUNDLAND**

**ROYAL VISIT ISSUE**

**IN HONOR OF THEIR MAJESTIES**



Type C.2



Royal Visit to Newfoundland - June 17, 1939

Type C.3



And  
Gloria  
Then  
Augustus

L. P. MOSS DEER LAKE, NEWFOUNDLAND

# THE NEWFIE NEWSLETTER OF THE NEWFOUNDLAND STUDY GROUP OF BNAPS

**Number 90**

**September/October 2001**

## MOON LISTINGS

Seventh installment, in alphabetical order. See Issues 83-84 and 86-89 for previous listings

Y681	Reefs Harbour	Y816	Shearstown	54447	St. Chads
54383	Reginaville	54518	Sheaves Cove	Y727	St. Davids
Y682	Reidville	54520	Ship Cove, PB	Y730	St. Fintans
Y685	Rencontre East	54525	Ship Cove, PP	Y735	St. Georges
Y690	Rencontre West	54530	Ship Harbour	X735	St. Georges (Error)
Y695	Renews	Y817	Shoal Harbour	Y740	St. Jacques
54385	Richards Harbour	54543	Shoal Point	Y750	St. Johns
54387	Rigolet	Y811	Shoe Cove	Y754	St. Johns-Churchill Park
54400	River of Ponds	54545	Shoe Cove, GB	Y749	St. Johns-Mundy Pond
Y692	River of Ponds	54550	Silver Fox Island	Y745	St. Johns-St. Johns East
Y694	Riverhead (Hr. Grace)	Y814	Smiths Harbour	Y757	St. Johns-Sub 1
Y693	Riverhead (St. Mary's)	54553	Smokey	Y772	St. Johns-Sub 10
Y696	Roberts Arm	54553	Smokey Run	Y773	St. Johns-Sub 11
Y698	Robinson	54533	Smokey Tickle?	Y776	St. Johns-Sub 12
54410	Robinsons Station	54555	Snooks Arm	Y777	St. Johns-Sub 13
54415	Rock Harbour	Y819	Snooks Harbour	Y778	St. Johns-Sub 14
Y699	Rock Harbour	54557	Snug Harbour	Y780	St. Johns-Sub 15
Y697	Rocky Harbour	Y818	Sops Arm	Y783	St. Johns-Sub 16
Y700	Roddickton	54565	South Branch	Y758	St. Johns-Sub 2
Y702	Rodgers Cove	Y822	South Branch	Y759	St. Johns-Sub 3
Y705	Rose Blanche	Y823	South Brook	Y761	St. Johns-Sub 4
54425	Round Harbour	54567	South East Bight	Y762	St. Johns-Sub 5
54427	Rushoon	54571	South East Placentia	Y767	St. Johns-Sub 6
Y707	Rushoon	54579	South River	Y768	St. Johns-Sub 7
Y785	Sagona Island	Y827	South River	Y769	St. Johns-Sub 8
54500	Sallys Cove	54573	Southern Bay	Y771	St. Johns-Sub 9
Y800	Sally Cove	Y824	Southern Bay	Y752	St. Johns District
54499	Salmon Cove	54575	Southern Harbour	Y755	St. Johns Harvey Road
Y789	Salmon Cove	Y825	Southern Harbour	Y751	St. Johns Station A
54499	Salmon Rock	Y826	Southport	Y753	St. Johns Station B
Y790	Salvage	Y830	Spaniard Bay	Y756	St. Johns West
54508	Sandringham	Y830	Spaniards Bay	54460	St. Jones Within
Y791	Sandringham	54585	Spanish Room	Y764	St. Jones Within
54497	Sandy Hook	Y832	Spencers Cove	Y742	St. Josephs
54504	Sandy Point	Y833	Spillars Cove	54472	St. Josephs Cove
Y500	Sandy Point	54592	Spotted island	Y760	St. Josephs Salmonier
54509	Sandyville	Y835	Springdale	54470	St. Josephs, PB
54511	Savage Cove	54595	Spruce Brook	54475	St. Juliens
Y793	Savage Cove	54597	Square Island	Y765	St. Kyrans
Y804	Seal Cove (CB)	Y745	St. Johns East	Y770	St. Lawrence
54590	Seal Cove (FB)	Y710	St. Albans	54476	St. Lewis
Y806	Seal Cove (HB)	Y715	St. Andrews	Y763	St. Lewis
Y805	Seal Cove (WB)	Y720	St. Anthony	54477	St. Luniare
Y850	Seal Cove (WB) (Error)	54430	St. Anthony Bight	Y774	St. Luniare
Y807	Searston	Y721	St. Anthony East		
Y815	Seldom Come By	Y723	St. Bernards		
Y810	Shallop Cove	Y725	St. Brendans		
54516	Shalloway Cove	Y726	St. Brides		
Y802	Shalloway Cove	54445	St. Catharines		

This list will be concluded next issue.



**THE NEWFIE NEWSLETTER  
OF THE NEWFOUNDLAND STUDY GROUP OF BNAPS**

**Number 90**

**September/October 2001**

**NEWFOUNDLAND'S POSTAL STATIONERY 1897-1941 – Horace W. Harrison**

**Page 21**

POSTAGE DUE "2" CENTS - DOUBLE THE DEFICIENCY

Ⓣ HANDSTAMPED DUE MARKINGS 2

HEARTS CONTENT, NEWF'D. JU 15 96 TO CAN50, N.S.  
VIA RAILWAY T. P. O., JU 16; ST. JOHN'S, PM, JU 16 AND  
HALIFAX, CANADA JU 27.



PLATE  
POSITION  
FOUR

C73

MANUSCRIPT "2" & HANDSTAMPED "T" DUE MARKINGS  
TWILLINGATE, NEWF'D. JU 2, 98. TO TORONTO, CANADA  
VIA ST. JOHN'S, PM, JU 7. "REFUSED" IN MANUSCRIPT  
& HANDSTAMP APPLIED AT TORONTO JU 13 & JU 15. SENT TO  
DEAD LETTER OFFICE, CANADA JU 16 & DISPATCHED  
THEREFROM JU 21 BACK TO NEWF'D.



PLATE  
POSITION  
TEN



# BNAPS Newfoundland Study Group

## **Financial Statement as of August 15, 2001**

	Item	Debit	Credit
Aug 15, 2000	Balance Forward from Previous Year		\$165.55
	Bank Interest		.08
	Service Charges (Cheques, etc.)	7.60	
	BNAPS Stipend and Memberships (applies to 1999/2000 memberships)		239.00
	BNAPS Stipend and Memberships (applies to 2000/2001 memberships)		168.00
	62 Paid Memberships (12 memberships were paid in advance in 1999/2000)		806.00
	Membership dues paid in arrears		0.00
	Membership dues paid in advance		117.00
	Donations		80.12
	Newsletter Postage	244.51	
	(5 Issues) Typing	150.00	
	Paper and Copying	317.97	
	Misc. Stationary	31.79	
	Totals	751.87	\$1575.75
Aug 15, 2001	Balance on hand end of this year		\$823.88

## MEMBERSHIP RENEWAL FORM

### BNAPS NEWFOUNDLAND STUDY GROUP

Name: \_\_\_\_\_

Address: \_\_\_\_\_

Postal Code: \_\_\_\_\_ E-Mail: \_\_\_\_\_

Telephone: (Home): \_\_\_\_\_ (Office): \_\_\_\_\_

Annual Fee: \$13.00 (Canadian Dollars)  
\$9.00 (US Dollars)  
£6.50 (British Pound)

Please make your cheque or money order payable to:

**BNAPS Newfoundland Study Group**

care of the Treasurer

Martin Goebel, 79 Highland Dr., St. John's, NF, CANADA, A1A 3C3

**goebel@roadrunner.nf.net**

*All members are requested to kindly remit this form for our accounting and mailing purposes  
Thank you!*