

**THE NEWFIE NEWSLETTER
OF THE NEWFOUNDLAND STUDY GROUP OF BNAPS**

Number 88

May/June 2001

EDITOR'S COMMENTS

THIS ISSUE

- Page 2 H.M.S. Norfolk in Newfoundland - Dean Mario
Pages 3-5 The Newfoundland ((235)) Cancel - Sammy Whaley
Page 6 Newfoundland Stamp Dealers - George McGowan
Page 7 The Wreck of the SS Labrador - Colin Lewis
Page 8 Newfoundland's Postal Stationery 1873-1941 - Horace Harrison
Page 9 Moon Listings - Mike Sagar
Page 10 Late Letter - Dean Mario



TWO NEW BOOKS FOR YOUR PHILATELIC LIBRARY

THE POST OFFICES OF NEWFOUNDLAND (CANADA)

Richard Small has a new book listing 1582 post offices from 1850 to date. He writes:

"I have been compiling data on U.S. and Canadian post offices. I noticed that there were two books listing Newfoundland post offices, so I combined them and also added material I found at the Canadian Archives. Although not complete, it is the most comprehensive list of Newfoundland Post Offices and I thought your study group might be interested in it."

The book is 8.5" X 11", with 38 pages, soft, tape bound. Cost is \$10 U.S. plus postage.

The book may be ordered from Small at 14502 Oak Cluster Drive, Centreville, VA, U.S.A. 20120. Small has email: **RSsmall9293@aol.com**

WEBB'S POSTAL STATIONERY CATALOGUE, 2001, SEVENTH EDITION

This is the most comprehensive listing ever published for the postal stationery of Canada and Newfoundland, and the first new edition in seven years. It includes envelopes, post cards, air letter sheets, precancelled issues and "much, much more". It has a complete repricing with attention to the retail and auction markets, including results of the recent sales of outstanding Horace Harrison stationery collections. It is 322 8.5" X 11" pages - almost double the length of the last edition.

This important work can be ordered from Saskatoon Stamp Centre, Box 1870, Saskatoon, SK S7K 2S2, Canada. For questions, contact Marilyn Peterson toll free at (800) 205-8814 - North America only, or (306) 931-6633. Email is **ssc.marilyn@saskatoonstamp.com**

Cost is C\$39.95 or US\$26.95. Postage/handling: within Canada C\$5.00, to US, C\$7.50/US\$5.25. Overseas postage/handling is C\$11.50 or US\$8.00

SUPPORT OUR DEALER MEMBERS:

J.C. Michaud, Gary Douglas, and John Jamieson (Saskatoon Stamp Centre)

Chairman/Editor: Norris (Bob) Dyer, 1708 Granada Court, Petaluma, Ca 94954
Treasurer: Martin Goebel, 79 Highland Dr. ,St. John's, Nfld, Canada A1A 3C3

THE NEWFIE NEWSLETTER
OF THE NEWFOUNDLAND STUDY GROUP OF BNAPS

Number 88

May/June 2001

H.M.S. NORFOLK IN NEWFOUNDLAND

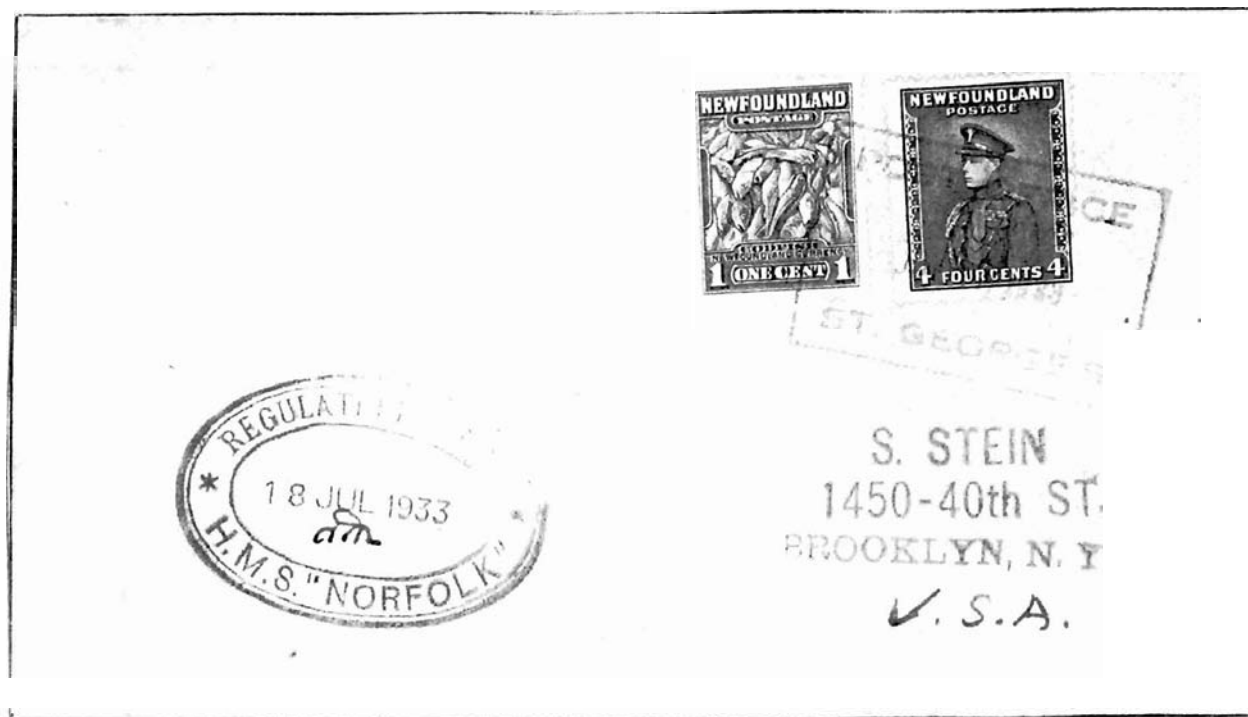
Dean Mario

Great Britain's H.M.S. Norfolk was launched in December, 1928 with a displacement of 9,925 tons. The warship was equipped with six eight-inch 50 caliber, eight four inch anti-aircraft ("ack-ack") and twelve two-pounder "pom-pom" guns. She was certainly an impressive and formidable vessel.

In July, 1933 Norfolk was in Newfoundland waters, perhaps in St. George's Bay. The cover below bears a (light) carmine dotted-box cancellation from St. George's and is addressed to the United States. Both the front and reverse of the cover bear the dotted oval "Regulating Office" triple-oval marking in blue.

One of Norfolk's actions during the Second World War occurred on the night of January 11-12, 1945, when she, along with three destroyers swept Leads near Egersund, Norway and encountered an enemy convoy. Two cargo ships and one of the six enemy escort vessels were sunk.

In May, 1945, Norfolk participated in the liberation of Norway and was sent to Bergen to assist with the removal of U-boats, the collection of enemy prisoners, and the unloading of supplies. On June 5, 1945, Norway's King Haakan and members of the royal family embarked in Norfolk at Rosyth to Oslo.



THE NEWFIE NEWSLETTER
OF THE NEWFOUNDLAND STUDY GROUP OF BNAPS

Number 88

May/June 2001

THE NEWFOUNDLAND ((235)) CANCEL
Sammy Whaley

Newfoundland collectors have always been piqued by the ((235)) cancel. Besides the A92 Cunard-line ship cancel, it is the only other numeral cancel on Newfoundland stamps. It has variously been described as a paqueboat/mailboat cancel, a registration cancel or even a receiver. The cancel was only used in St. John's on both colonial and foreign mail. It was used on registered and non registered letters as well as a transitory strike.

There is no record of the ((235)) being officially delegated to St. John's so its origin is a mystery. There was a similar cancel used in Staindrop, England until about 1860 and someone could have brought it to St. John's as a personal obliterator. This was the opinion of Col. Robert Pratt, probably the most knowledgeable person to have written about it. The evidence does support the concept that it was used by just one person as a cover review shows periods of relatively active use followed by long periods of non-use.

The earliest known use (EKU) of the ((235)) is an open question. Two dates have proponents - 1865 and 1873. 1865 was the date when Newfoundland changed from the pence to decimal currency on its stamps, and both Robson Lowe and John Butt espoused that year as EKU for the cancel. This was probably based upon one well known Pence cover from that year with the ((235)) used to cancel two Pence issue stamps. But is this particular cover legitimate? It has a good BPA certificate but the Philatelic Foundation in New York did not agree. The cover has recently changed owners and perhaps the new owner will resubmit it and end the debate over its legitimacy.

1873 is the other date championed as the EKU for the ((235)), by Col. Pratt, and also David Piercey, in his superb article on cork cancels in the **Newfie Newsletter** of May-June, 1994. Although Pratt felt the cancel was not used on pence stamps, it is ironic that he wrote his most inclusive article on the cancel in his **Pence Issues of Newfoundland**. The cover upon which these proponents base their 1873 EKU is shown in Figure #1. This fantastic piece currently belongs to Colin Lewis and I thank him for sending me the illustration to use in this article.

Going back to 1865, it still remains a pivotal year in the debate over first use of this cancel. The new Cents stamps did not arrive until mid-November which necessitated the continued use of Pence stamps, and there were various times in 1867-69 when some post offices resorted to Pence issue stamps because of exhaustion of Cents values. (No Newfoundland stamps have ever been demonetized and thus the Pence stamps could properly have been used during such shortages.) If the ((235)) was available at that time there could be Pence issues cancelled by it *during the Cents period*. Finding one might lay the debate to rest. Not quite. See Figure #2 for a legitimate-looking cancel on a Three Pence stamp (Scott 11A). Can't we thus conclude that the cancel was used as early as 1865? "No!" said Pratt. The 1873 supporters state that the ((235)) cancels found on Pence issues were placed on *remainders* in the 1890's. It is true that the Pence values that were remaindered are all known with this cancel. Pratt also added that the cancels in question were too sharp and well-defined to have gone through the mails. I concede that most of the Cents covers with the ((235)) cancel have a somewhat blurred strike, and that would tend to substantiate Pratt's argument. But if one looks at the cover in Figure #1 one can see the cancel on the 12¢ stamp is *sharp*, well defined, and very similar to that on the Pence stamp in Figure #2.

**THE NEWFIE NEWSLETTER
OF THE NEWFOUNDLAND STUDY GROUP OF BNAPS**

Number 88

May/June 2001

THE NEWFOUNDLAND ((235)) CANCEL (Continued)

The strike on the 5¢ stamp is blurred, however, much like the ones on later covers. It would logically follow that the sharpness of the cancel was determined more by the severity of the strike and how long the obliterator was held to the cover rather than what year it was applied. Col. Pratt did not rule out *all* Pence issue ((235)) cancels as being applied to remainders, as there are a couple of Pence stamps values with this cancel that were not part of the remainders. He felt that they were used after April, 1873, which is highly unlikely. Although there are cerificated Pence stamps with this cancel one must still decide as to their time of use. I personally do not believe they were used after April, 1873 and that the ((235)) cancel was *used* (albeit infrequently) in the period of the Pence stamps.

Besides the issue of ECU for the ((235)) cancel the same question arises as to the latest date of use. Some experts say January, 1888, while others feel it was in 1896. We'll save that for another time.

For those who wish to collect the ((235)) cancel, I offer the following. Obtaining a single copy for a cancellation study is not difficult as they frequently appear on Internet or public auctions. Most BNA dealers should have the cancel on at least one stamp. On the Cents issues the cancel is found on: #24a, 26, 27, 27a, 28, 30, 32a, 33-35, 37-42, 44, 46, 48-49, 53-54. Cancels on #34-35, 39 and 49 can be found for less than \$10. One may see the cancel described as being on Cents issues other than those listed above, but be wary, as they may be faded examples of similar stamps, i.e. a #43 is usually a faded #42, and #47 actually a #46. Also be cautious of any stamp printed after 1888 with the cancel. Collecting cancels on *all* the stamps above is quite a challenge and could take years. If given the opportunity to obtain a ((235)) on a Pence issue, understand that questions surround the legitimacy of such usage. Figure #3 shows the cancel on #35, 41, and 53.

The greatest challenge is to find the cancel on cover. Only #24a, 26, 27a, 28, 32a, 34-35, 38, 41-42, 44, 46, 49 and 53-54 have been recorded on cover (Figure #4 shows #41 and 46 on cover). Pratt lists a total of only 35 covers having this cancel (Reference 4.). I've been able to add twelve more to the list. If you have a cover and would like to share the information with me, E-mail me at Onycha2@aol.com, or regular mail at Sammy Whaley, P.O. Box 235, Opp, Alabama 36467.

REFERENCES:

1. Butt, John: *The Postal Markings St. John's General Post Office and Sub Offices, 1840-1949*
BNA TOPICS, July-August, 1991, Page 31.
2. Lowe, Robson: *The Encyclopedia of British Empire Postage Stamps Part IV*, 1973, Page 447.
3. Minuse, Ken: "235" Numeral Obliterator Used on Newfoundland Stamps, , **BNA TOPICS** , Vol. 8
#10, 1951, Page 809.
4. Pratt, Robert: *The Pence Issues of Newfoundland, 1857-1866*, 1982, Pages 118-121.
5. Piercey, David: *Corks and Other Cancellations Found on "Cents" Issues: 1865-1898*, **Newfie Newsletter**, May-June, 1994, Page 4.
6. Scales, N.W. *Newfoundland "235" Numeral Cancellation*, **BNA Topics**, Sept. 1965, 206-207.

NOTE: Sammy will be a featured presenter at the Newfoundland Study Group meeting, BNAPEX2001, in Ottawa on either Friday or Saturday morning, August 31st or September first. He will announce a new research project on 19th century Newfoundland Cents covers! We hope you can be there! More details next issue!!

**THE NEWFIE NEWSLETTER
OF THE NEWFOUNDLAND STUDY GROUP OF BNAPS**

Number 88

May/June 2001

((235)) Illustrations



Figure # 1 (above) Scott # 26 & 28 on 1873 cover



Figure #2 ((235)) cancel on Scott #11A



Figure #3 Cancels on Scott #35, 41 & 53

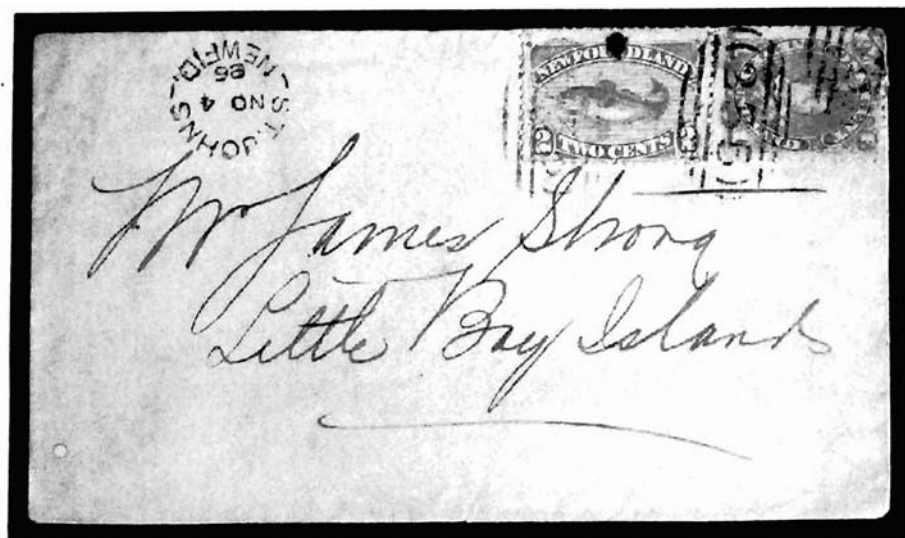


Figure #4 ((235)), Scott #41 & 46, on this 1886 cover

THE NEWFIE NEWSLETTER
OF THE NEWFOUNDLAND STUDY GROUP OF BNAPS

Number 88

May/June 2001

Newfoundland Stamp Dealers

If you collect Newfoundland postal history, you no doubt have come across covers from Rev. E.A. Butler or Frank W. Wills, two popular longtime dealers in Newfoundland Stamps and covers. However, you may not know that there were many more dealers contributing to the worldwide demand for some of the most beautiful stamps of the 20th century.

Below is a list of all the Newfoundland stamp dealers known to me. I have compiled this list from my own collection, the collection of James Luetje, Rockville, MD, the 4th edition of the Newfoundland Specialized Stamp Catalog, and personal accounts from long time collectors living in Newfoundland. I would enjoy hearing from collectors who can add to this far from complete list.

F.W. Adams	Botwood	
W.J. Allen	St. John's	
J.A. Basha	Corner Brook	
Rev. E.A. Butler	St. George's	
Caribou Stamp Co.	St. John's	
L.G. Chafe	St. John's	
W.L. Clarke	St. John's	
Geo. Cobb	Bay Roberts	
The Colonial Press	Corner Brook	
H.L. Farrell	St. John's	
Sam D. Grant	Trinity & Harbour Grace	
James Howley	St. John's	
Rev. H. Kirby	Harbour Grace	
Ralph Mercer	St. John's	
L.P. Moss	Deer Lake	
The Nfld Stamp Co.	St. John's	
The Nfld Stamp Collector	St. John's	
The Nfld Stamp Exchange	St. John's	
Wm. Noftall	St. John's	
N. Ohman	St. John's	
L.G. O'Keefe	St. John's	
The Old Colony Stamp Co.	St. John's	
Cecil V. Patey	Englee & Pilley's Island & Wellington	
John W. Penney	St. John's	
Jethro W. Penny	St. John's	
The Pioneer Stamp Co.	Grand Falls	
The Premier Stamp Co.	St. John's	
Fred Rose	St. John's	
R. C. Rose	St. John's	
W. H. Rose	St. John's	
L. P. Ross	Deer Lake	
Rev. E. Rusted	Carbonear	
Robert Simms	St. John's	
Henry Snow	St. John's	George McGowan
Harold Starkes	Nippers Harbour	12 Woods Path
Malcolm Starks	Grand Falls	Troy, NY 12182 USA
Frank Wills	St. John's	

THE WRECK OF THE SS LABRADOR

On the 19th of February, 1899, the Dominion Line Steamship "Labrador", a vessel of 4737 gross tonnage and built by Harland and Wolff of Belfast, left St. John's, New Brunswick bound for Halifax, and thence to Liverpool, England. She arrived at Halifax on February 20th and set sail the next day to cross the Atlantic. Her first intended port of call was Moville, Northern Ireland but having for most of the voyage had a pleasant if somewhat rough passage she encountered very dense fog as she approached Ireland, and failed to find the port.

By the morning of Wednesday, the 28th of February, the fog was at its worst and a lookout was posted at the masthead to watch for lights. It was then that his shout "Breakers ahead!" was heard too late to prevent the ship running aground on the Mackenzie Rocks about four miles south of Skerryvore Lighthouse which is itself ten miles southwest of the Inner Hebridean island of Tiree.

The Captain ordered all on board to take to the lifeboats and (miraculously) no one was lost. The majority of the passengers and crew were rescued by the German vessel "Viking" whilst one boatload of people made it to the lighthouse. The **Labrador** limped to the mainland, a gaping hole in her side and much of her cargo was never seen again. The vessel was run aground and it would appear that a few items of mail were salvaged from the now totally wrecked ship.

The cover below is one of eight known recovered, and the six I've seen all originated in Newfoundland. It is franked with the two cent codfish of 1888 and tied by the standard barred circle killer (although like the rest, the stamp has been re-affixed by the Post Office). The St. John's free strike is dated **AM FE 16 99** while the Liverpool double circle is dated **MR 16**. The cover is clearly stained by sea-water and has been sealed with selva from the British Jubilee stamp issue.

Of the surviving covers, three are known dated Liverpool on March 15th whilst three others are dated Glasgow on either the 10th or 14th March. Unlike the Liverpool covers with the cachet "Recovered From Wreck / Of SS 'Labrador'" the Glasgow covers bear the cachet "Damaged By Immersion / In Sea Water" with no mention of the **Labrador**. The cancel dates are significant and members are urged to report copies they own, by writing the Editor. ————— *Colin D. Lewis, Swansea U.K.*



THE NEWFIE NEWSLETTER
OF THE NEWFOUNDLAND STUDY GROUP OF BNAPS

Number 88

May/June 2001

NEWFOUNDLAND'S POSTAL STATIONERY 1873-1941 - Horace W. Harrison

Page 19

BRITISH AMERICAN BANK NOTE CO., MONTREAL OBTAINS
THE CONTRACT FOR POSTAL STATIONERY & ADHESIVES
FIRST DELIVERIES WERE MADE IN JULY OF 1880, BUT
WERE NOT RELEASED TO THE PUBLIC UNTIL STOCKS
OF THE PREVIOUS ONE CENT CARD WERE EXHAUSTED

THE ONE CENT CARD WAS RECESS PRINTED ON ONE
PLATE OF 10 SUBJECTS, 2x5, IN USE FOR OVER 20 YEARS

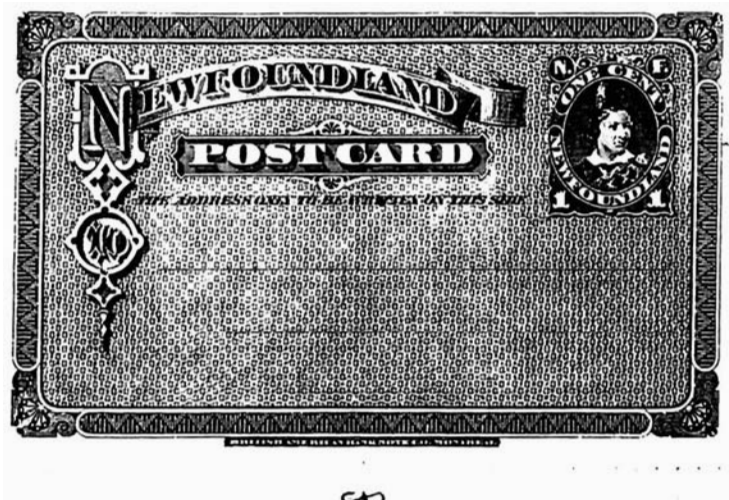


PLATE
POSITION
ONE

NO ORIGINATING POSTMARK IS UNUSUAL
MESSAGE HEADED "MORETON'S HARBOUR, 21 JULY, 94"
ONLY POSTMARK "HALLS BAY R.T.P.O.; N.22; JY 25, 94"



PLATE
POSITION
NINE

*PART OF PROVISION ORDER NOT TO HAND, BACON, BUTTER
HAM, RAISINS, LARD; KINDLY SEND BY FIRST CHANCE"

THE NEWFIE NEWSLETTER
OF THE NEWFOUNDLAND STUDY GROUP OF BNAPS

Number 88

May/June 2001

MOON LISTINGS

Fifth installment, in alphabetical order. See issues 83-84 and 86-87 for previous listings.

54103 MOUNT ARLINGTON HEIGHTS	Y588 OLD SHOP
Y541 MOUNT ARLINGTON HEIGHTS	54207 PACKS HARBOUR
Y542 MOUNT CARMEL	Y591 PACQUET
Y548 MOUNT MORIAH	54208 PARADISE RIVER
Y544 MOUNT PEARL	54209 PARSONS HARBOUR
54107 MOUNT PEARL PARK	54210 PARSONS POND
Y544 MOUNT PEARL PARK	Y592 PARSONS POND
Y549 MUD LAKE	54211 PARSONSVILLE
Y545 MUSGRAVE HARBOUR	Y593 PASADENA
Y550 MUSGRAVETOWN	Y595 PASS ISLAND
54113 NAIN	54220 PATRICKS COVE
Y551 NAIN	54230 PERRY COVE
54115 NEW BONAVENTURE	Y600 PERRY COVE
Y553 NEW CHELSEA	54235 PETERS RIVER
Y555 NEW HARBOUR	54233 PETERVIEW
Y557 NEW MELBOURNE	Y602 PETERVIEW
Y559 NEW PERLICAN	Y605 PETIT FORTE
Y554 NEWMANS COVE	Y606 PETITES
Y556 NEWSTEAD	54238 PETLEY
Y560 NEWTOWN	Y607 PETLEY
Y563 NEWVILLE	54240 PETTY HARBOUR
Y565 NIPPERS HARBOUR	Y604 PETTY HARBOUR
Y567 NOELS POND	Y608 PHILLIPS HEAD
54145 NOGGIN COVE	54247 PICCADILLY HEAD
Y566 NOGGIN COVE	54245 PICCADILLY
Y568 NORMANS COVE	Y609 PIKES ARM
Y570 NORRIS ARM	Y610 PILLEYS ISLAND
Y571 NORRIS ARM NORTHSIDE	Y615 PLACENTIA
Y575 NORRIS POINT	54255 PLATE COVE EAST
54158 NORTH BOAT HARBOUR	Y611 PLATE COVE EAST
Y581 NORTH HARBOUR (PB)	54257 PLATE COVE WEST
54170 NORTH HARBOUR	Y612 PLATE COVE WEST
Y583 NORTH VALLEY	Y616 PLEASANTVIEW
Y584 NORTH WEST BROOK	Y095 PLUM POINT
54177 NORTH WEST RIVER	54260 POINT AU GAUL
Y582 NORTH WEST RIVER	Y614 POINT AU GAUL
54160 NORTHERN ARM	54265 POINT AU MAL
Y579 NORTHERN ARM	54270 POINT CREWE
Y580 NORTHERN BAY	54275 POINT ENRAGEE
54182 NUTAK	54277 POINT LA HAYE
54187 O'DONNELLS	54278 POINT LANCE
Y596 O'DONNELLS	Y617 POINT LEAMINGTON
54200 O'REGANS	54285 POINT MAY
Y578 O'REGANS	Y628 POINT MAY
54485 OCHRE PIT COVE	54290 POINT OF BAY
Y585 ODERIN	Y619 POINT OF BAY
Y587 OLD BONAVENTURE	54295 POINT VERDE
Y589 OLD HALL	54297 POLLARDS POINT
Y590 OLD PERLICAN	Y623 POLLARDS POINT
54190 OLD SHOP	Y620 POOLS COVE

THE NEWFIE NEWSLETTER
OF THE NEWFOUNDLAND STUDY GROUP OF BNAPS

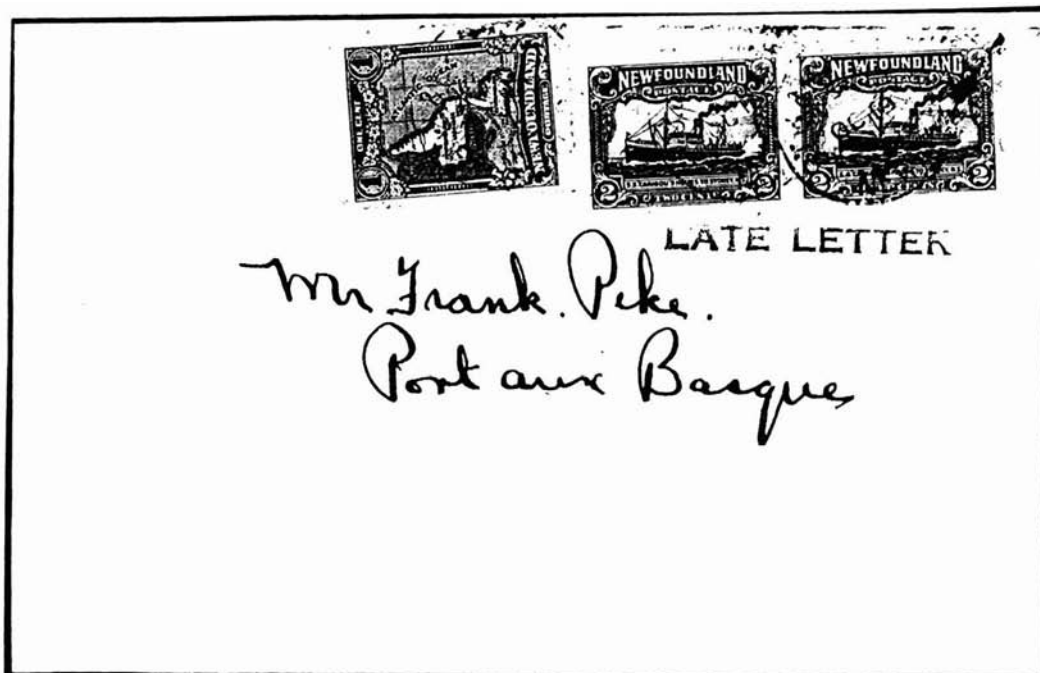
Number 88

May/June 2001

BETTER A LATE LETTER THAN NO LETTER AT ALL

Dean Mario has provided us a look at another of his covers, below. Dean writes:

Here's another interesting **LATE LETTER** marking obtained from the Palmer Moffat collection. It's in purple ink and is obviously from a rubber marking device. It measures 37mm long and is 3mm high. The stamps paying the 5¢ rate (which included the 2¢ late letter fee) have been cancelled with an indistinct **ST. JOHN'S & PORT AUX BASQUES R.P.O.** circular date stamp dated October 19, 1931. Members may recall these markings within previous issues of the **NEWFIE NEWSLETTER** (No. 44, Page 1, No. 45, Page 3, and No. 62, Page 3) and this adds another piece to this fascinating puzzle.



.....

Next issue provides a look at mail from the successful Alcock-Brown 1919 flight showing the efforts of the sender to authenticate receipt in England.