

**THE NEWFIE NEWSLETTER
OF THE NEWFOUNDLAND STUDY GROUP OF BNAPS**

Number 86

January/February, 2001

EDITOR'S COMMENTS

I received this note from Don Wilson about the October 2nd funeral service for John Butt:

"We have gone through a tragic loss of John Butt. The esteem for him was shown at the Anglican Cathedral service when more than 400 of his friends attended. Loretta and the three daughters are doing well."



THIS ISSUE

Page 2. Information on the three of us who handle the needs of the study group.
Page 3-6 The Money Order Office (MOON) System in Newfoundland (1949-1973) - *Mike Sagar*
Page 7-8 Newfoundland's Postal Stationery 1873-1941 (Pages 16-17) - *Horace W. Harrison*
Page 9 - Fiscal Use of 2¢ 1939 Surcharge Perfin - an item provided us by *Barry Senior*
Page 10. Some postal history realizations from Robert Lee's October 21st public auction.

In one of our first newsletters there was a goal to solve the mystery of Newfoundland air mail rates. The following notice, provided by Dean Mario, provides us a new air mail reference book.

**NEWFUNDLAND AIR MAIL POSTAGE 1937-1949
EXTRACTS FROM THE NEWFOUNDLAND POST OFFICE CIRCULAR
by Jack Ince**

This booklet is **24** pages long, spiral bound, and reproduces the original announcements and rate tables from the Newfoundland Post Office circulars. The price, including postage will be: \$7 Canadian in Canada; \$5 U.S. for orders mailed to the U.S.A.; \$10 Canadian or \$7 U.S. for orders mailed overseas (CAS members may deduct \$1.50 Canadian or \$1 U.S. from these prices.) Orders should be sent to: *Chris Hargreaves, 4060 Bath Road, Kingston, Ontario K7M 4Y4*. Payment can be made by Canadian Dollar cheque payable to Chris Hargreaves, International Money Order, or in US. Dollar bills (at sender's risk).

Dues - if the Box shows an X we do not have your 2001 dues. \$13 Canadian, \$9 U.S. or f 6.50.

Support our Dealer Members

J.C. Michaud, Box 31248, Halifax, Nova Scotia, B3K 5Y1
Gary Douglas, 2675 Hayfort Ct. Mississauga, Ontario, L5K 1P8
R.J. McGillivray, Stanley Stamps, 1096 Richard's St., Vancouver, British Columbia, V6B 3E1
John Jamieson, Saskatoon Stamp Center, P.O. Box 1870, Saskatoon, Saskatchewan, S7K 3S2

Chairman/Editor: Norris (Bob) Dyer, 1708 Granada Court, Petaluma, Ca 94954 nrdyer@home.com
Treasurer: Martin Goebel, 79 Highland Dr. St. John's, Newfoundland, Canada A1A 3C3

THE NEWFIE NEWSLETTER
OF THE NEWFOUNDLAND STUDY GROUP OF BNAPS

Number 86

January/February, 2001

THE TEAM

Norris (Bob) Dyer was born in Maine, graduated from college in California and retired as a division chief from the State Compensation Insurance Fund in 1997. He has collected stamps since 1950, and started collecting issues of Newfoundland in the mid-1980's. Bob has written many articles on Newfoundland philately, and has received three Robert Pratt awards (photo is of Bob, at left, receiving first Pratt award at Pacific '97 from Raymond Vogel). He has also received a Vincent G. Greene award. His exhibit, *Postal Shortages, and Surcharged Issues of Newfoundland* has won Gold at three APS national shows and at BNAPEX'99. The exhibit was made into *BNAPS Exhibit Series No. 19* last year. He is **Chairman** of the Group and **Editor** of the newsletter.



J. Don Wilson P. Eng. was born in Calgary and graduated from college as a mechanical engineer. He received an Honorary Doctorate from T.U.N.S. in 1979. He has collected stamps since a youth, with his main areas of interest being Canada and Newfoundland, including revenues. He has been very active in R.P.S.C. and BNAPS, and has served as Chairman of Board of Directors for the latter, and also as Chairman of the BNAPS Ethics Committee. He was Chairman of BNAPEX'97 and received the Order of the Beaver (OTB) from the society at that time. Don has also served as President of the St. John's Philatelic Society. He has been Chairman of the study group and now is **Circulation Manager**. *Photo at right is Don after receiving OTB at BNAPEX'97.*



MARTIN GOEBEL P. Eng. grew up in Southern Ontario, and received his engineering degrees at the University of Waterloo. He is now director of the Water Resources Division of the Department of Environment and Labour. He has collected since he was young, especially West Germany, German States, and Territories, and has exhibited this material. He also collects the stamps of Newfoundland. He has been Treasurer of St. John's Philatelic Society for over 17 years, and was in charge of Finance & Publications for BNAPEX'97. Martin is also the proprietor of Atlantic Stamps and Supplies, and has served as **Treasurer** of the study group since 1993.



The Money Order Office Number (MOON) system in Newfoundland (1949-1973)

Background (Canada - pre-1949): In the 19th century Canadian post offices were divided into two basic categories. Larger post offices were called "accounting" post offices, and handled a full range of services. Smaller post offices were called "non-accounting" offices, and offered more limited services, especially related to money orders (I believe for a time no-money order service was offered, by the 1960's only money orders up to \$16 could be handled). There were also differences in the way those post offices made financial reports to Ottawa. In 1923 each accounting post office was assigned a unique 4 character number to help the post office keep track of it's activities. These are known as Money Order Office Numbers (MOON). The assignment was by province, and then alphabetically by town. Quebec started with 0001 and BC holds the high number of 9999 (spaces were left to accomodate new post office openings). The Yukon, NB, NS and PEI were assigned numbers that started with X001 up to X999. (Precancel collectors will recognize these numbers). In about 1935 each non-accounting post office was assigned a five digit number that were again by province, and then alphabetical by town name. These numbers run from 55000 (Yukon) to 99999 (BC). Post office name changes, openings and closings, and changes in status between "accounting" and "non-accounting", combined with a shortage of numbers, means that post offices often aren't found in alphabetical order.

Confederation (1949): When Newfoundland became part of Canada, the postal system had to be squeezed into the existing framework. As no "accounting" numbers had been left open for a new province in 1923, the post office decided to use the same framework, except that Newfoundland "accounting" offices would be assigned a 3 digit number with the prefix of "Y", meaning that Newfoundland's assignments ran "Y001" to "Y999". This assignment has caused some confusion, and a few MOON hammers for Newfoundland were prefixed with "X" instead of "Y" by accident, but I have never seen any that were ever in use. "Non-accounting" post offices were assigned numbers between 53000-54999.

Postal Agencies (1950-66?): The post office licensed a few private retailers to sell stamps and register mail (I suspect that they also handled money orders of low value). These post offices were considered "Non-accounting", but had their own separate 5 digit number series (40000 - 40999). Little is documented about these post offices (there were only about 50 Canada-wide). Newfoundland only had six such offices, the Portland Creek postal agency being the only one that I have seen covers from. These offices were all closed by the mid-1960s.

The computer age (1970 -): With the advent of computers, the MOON system had to be changed, as the computers didn't cope well with the "X" or "Y" prefixes of the Maritime or Newfoundland post office numbers. In 1970, the "Y" was changed to "11" (11000 - 11999 was the range of assignments). This change was reflected only in post office paper work, and not on the cancels themselves, which continued to be issued with a "Y" prefix. The MOON system had stood for almost 50 years. but a

THE NEWFIE NEWSLETTER
OF THE NEWFOUNDLAND STUDY GROUP OF BNAPS

Number 86

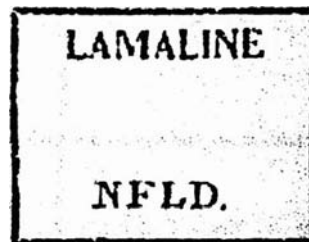
Jan/Feb 2001

number of factors was making it obsolete. On April 1, 1973 MOONs were replaced with the POCON (Post office computer office number) system, which was a six digit number (actually a five digit assignment and a "check" digit which allowed the computer to figure out if the previous five digit number had been entered properly). This system is still in place today (somewhat), except that while cancels still show 6 digits, the numbers are attached to individuals, and not the post office, making documentation of the numbers very difficult. The current system is known as HRIS - Human Resources Inventory System (The post office keeps little documentation of these assignments, meaning that they have to be documented now, or will be forever lost).

Cancellation devices: This system has produced a series of 4 different major types of rubber cancelling devices, two of which are relatively uncommon in Newfoundland, two of which are not. The first devices are known as MOODs (Money Order Office Device), which were first issue in Canada in 1927 and distinct looking round rubber CDS cancels of about 24 mm diameter (sometimes with ornaments). The definition of these cancels has come to include all circular rubber hammers under about 30mm diameter that were issued before 1973, and the proof books show about 20 MOOD-like hammers issued in 1950-51.



MOOD



MOTO

The second style of cancel is called a MOTO (Money Order Town Only - sometimes Money Order Transfer Office), which is a plain rectangular cancel with the town name, date and province name. These cancels were typically paired with a small straight-line cancel that had the post office's MOONumber. MOTOs were issued in Canada primarily from 1927 - 1950, and so only a few hammers were issued within Newfoundland (most of the CAPOs open in WWII in Newfoundland had MOTO cancels). The small straight-line cancels are rarely seen on stamps or covers, and only infrequently on receipts or other documents.

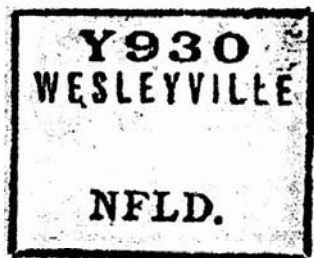
The third style of cancel is known as a MOON. Starting in most of Canada (including Newfoundland) in January 1950, post offices began to get issued with a rectangular rubber cancel that incorporated the MOON, town name, date and province within a box of about 30mm x 28 mm. These cancels were in use until March 31, 1973. In theory MOON, MOTO and MOOD cancels were not to be used to cancel anything except paperwork and receipts, but by the 1960's MOON cancels were in wide use. Note: I have been working on a series of booklets to document the use of MOON cancels across Canada, and have published 5 of the planned 8 booklets to date. I am working on Newfoundland. and currently list 700 different hammers from

**THE NEWFIE NEWSLETTER
OF THE NEWFOUNDLAND STUDY GROUP OF BNAPS**

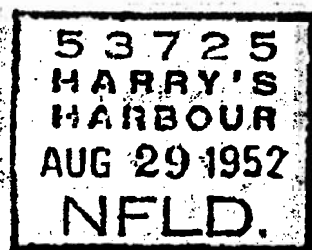
Number 86

Jan/Feb 2001

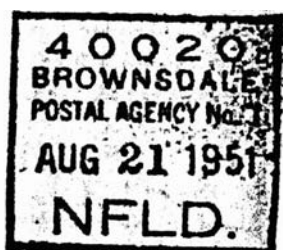
Newfoundland. I would love to hear from anyone interested in this project, who might have some information to contribute.



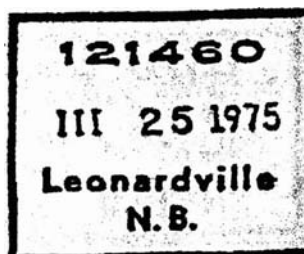
Accounting M.O.O.N.



Non-Accounting M.O.O.N.



Postal Agency M.O.O.N.



P.O.C.O.N.

The fourth style of cancel is the POCON, which started April 1, 1973. Unlike the previous cancels which had only been issued to post offices as previous hammers wore out, all post offices were issued POCONs so that they would be ready for the changeover date. These are now the predominant hand cancel used in Canada at the present time.

All four of these types of cancels make for interesting collecting, as they are a challenge, and there are relatively few people chasing them. For collectors looking for more information, I would refer to the Hughes/Lee "Proof Strikes of Canada" Volume XXII 'MOOD, MOTO, MOON & POCON Proof Strikes of the Maritimes', which documents much of the proof material known to exist in this area. There is also a PHSC Study Group called the MOOSE (Money Order Office Study Establishment). Doug Murray has edited the newsletter for 10 years. Doug's address is Box 693, Charlottetown, PEI C1A 7L3. Doug is trying to document the latest style of POCON cancel nicknamed "Wings" which is a rectangular rubber cancel showing the HRIS number and has the winged Canada Post logo in the upper centre of the cancel. Doug would love to hear reports of any of these cancels, and always has interesting material related to all these cancels up for discussion.

Mike Sagar

Mike can be reached at #208 - 611th West 13th, Vancouver, British Columbia, V5Z 1N8

**THE NEWFIE NEWSLETTER
OF THE NEWFOUNDLAND STUDY GROUP OF BNAPS**

Number 86

Jan/Feb 2001

MOON LISTINGS

The list is in alphabetical order. For previous lists, see Issues 83 & 84 from last year. Three-digit numbers prefaced by a "Y" were for "accounting post offices" whereas the five-digit numbers were assigned to "non-accounting post offices". See *Mike Sagar's article in this issue for complete information about MOONS, MOODS, MOTOS, and POCONS.*

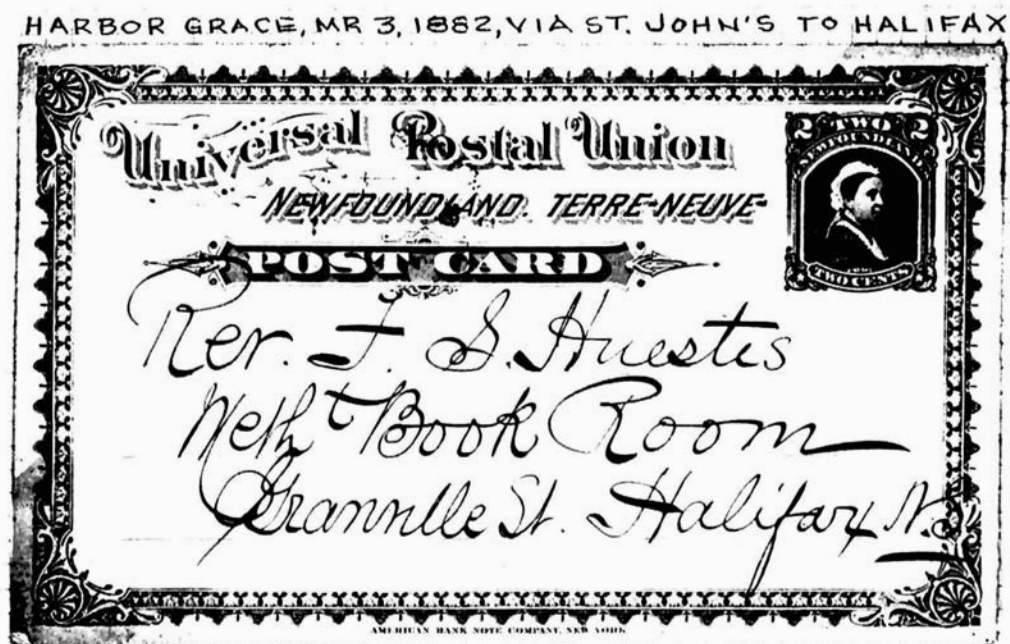
53790 INDIAN BAY
Y445 INDIAN BAY
53792 INDIAN HARBOUR
Y450 INDIAN ISLANDS
53793 INDIAN TICKLE
53800 IRELANDS EYE
53801 IRISHTOWN
53805 ISLAND HARBOUR
Y254 ISLAND HARBOUR
54720 ISLE VALEN
Y455 ISLE-AU-MORTS
Y465 ISLE-AUX-HARTS
53806 ISLINGTON
Y456 ISLINGTON
53808 IVANHOE
Y460 JACKSONS ARM
Y459 JACKSONS COVE
Y461 JAMESTOWN
53814 JEAN DE BAIE
Y463 JEFFREYS
Y465 JERSEY HARBOUR
53825 JERSEY SIDE
Y464 JERSEY SIDE
53830 JOBS COVE
Y467 JOBS COVE
Y466 JOT BATTS ARM
53835 KEELS
Y468 KEELS
Y469 KELLIGREWS
Y471 KETTLE COVE
Y470 KINGS COVE
(List continues next column)

Y475 KINGS POINT
Y752 KINGS POINT (error?)
53850 KINGSTON
Y477 KINGWELL
53860 KITCHUSES
53865 KNIGHTS COVE
Y478 KNIGHTS COVE
Y490 LA POILE
Y495 LA SCIE
Y479 LABRADOR CITY
Y480 LADLE COVE
Y481 LADY COVE
53870 LALLY COVE
Y485 LAMALINE
53872 LANCE AMOUR
53873 LANCE AU CLAIR
53874 LANCE AU LOUP
Y482 LANCE AU LOOP
53875 LANCE COVE
Y487 LANCE COVE
Y491 LARK HARBOUR
Y496 LAURENCETON
Y497 LAWN
X497 LAWN (ERROR)
Y499 LEADING TICKLES
53896 LEADING TICKLES SOUTH
Y492 LEADING TICKLES SOUTH
Y500 LETHBRIDGE
Y504 LEWINS COVE
Y505 LEWISPORTE
(Continued next issue.....)

Newfoundland's Postal Stationery 1873-1941 - Horace W. Harrison
Pages 16-17

THE FIRST U. P. U. CARD

ALTHOUGH THE AMERICAN BANK NOTE CO. HAD LOST THE CONTRACT IN 1880, THEIR EMISSIONS CONTINUED AS POST OFFICE STOCK WELL INTO THE 1890'S, AS THERE WAS LITTLE CALL FOR THEM. COMMERCIAL USAGE, SUCH AS THESE, ARE DIFFICULT TO FIND.



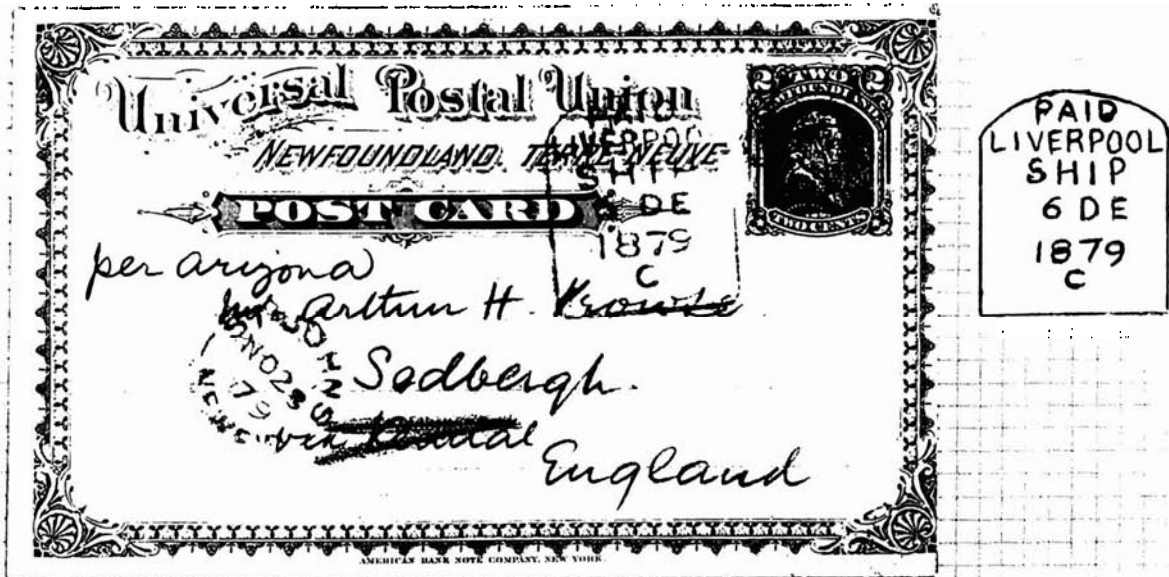
**THE NEWFIE NEWSLETTER
OF THE NEWFOUNDLAND STUDY GROUP OF BNAPS**

Number 86

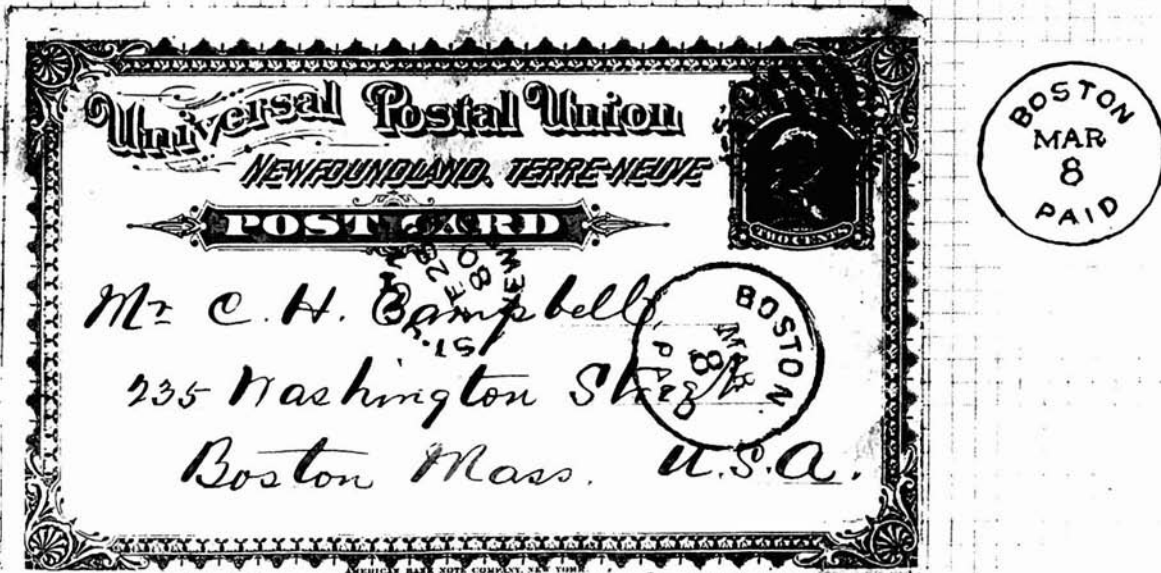
Jan/Feb 2001

THE FIRST U. P. U. CARD
ISSUED IN JUNE OF 1879;
REPLACED IN SEVEN MONTHS;
CONTEMPORARY USAGE IS RARE

ST. JOHN'S, NEWF'D, NO 28, 79 TO SEDBERGH, ENGLAND.



ST. JOHN'S, NEWF'D, FE 28, 80 TO BOSTON, MASS.



OLD CIRCULAR "ST. JOHN'S PAID" HANDSTAMP ALTERED
TO AN OBLITERATOR BY A LEAF INSERT OF CORK

**THE NEWFIE NEWSLETTER
OF THE NEWFOUNDLAND STUDY GROUP OF BNAPS**

Number 86

Jan/Feb 2001

FISCAL USE OF 2 ¢ 1939 SURCHARGE WITH PERFIN

Form B 41

AYRE & SONS LIMITED
ST. JOHN'S.

10m-4-30

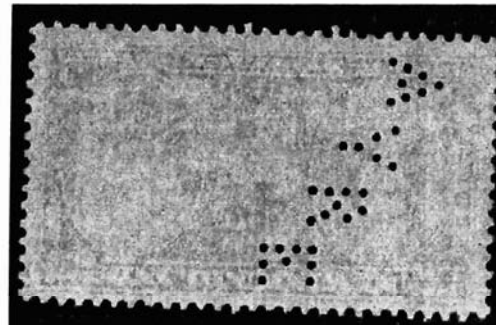
76123 1939

TO *Mrs M. Beckett, Paris
New Melbourne*

NUMBER	DESCRIPTION	AMOUNT
	<i>We enter to your Credit</i>	<i>1000</i>
	<i>Chgs.</i>	<i>2505</i>
		<i>1755</i>
	<i>We enter for Collection</i>	

Thanking you for the above, we remain,
Respectfully yours,
AYRE & SONS, LIMITED

H. G. Jayles



Barry Senior sends us the picture of the 1939 2¢ on 5¢ surcharged stamp (Scott # 250) with AYRE perfin fiscally used on AYRE receipt. The 2¢ perfin is rare in any case, but the above usage may be unique. The 1939 4¢ surcharge (Scott #251) is also known with the AYRE perfin. I have scanned the back of my copy of the 4¢ and reversed the image to show the perfin. This perfin is A9. Next issue of the Newsletter will include a survey of Newfoundland perfins by Barry. *Bob Dyer*

THE NEWFIE NEWSLETTER
OF THE NEWFOUNDLAND STUDY GROUP OF BNAPS

Number 86

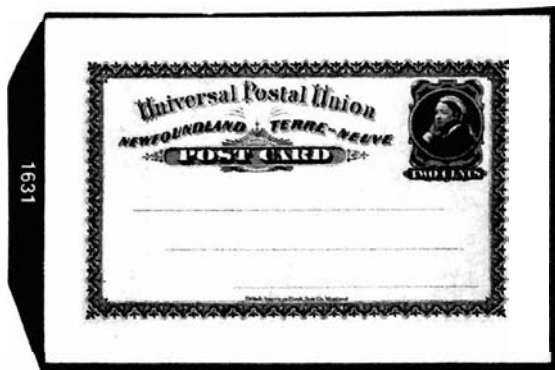
Jan/Feb 2001

AUCTION RESULTS

In this issue we look at some postal history and stationery from the **Robert A. Lee Public Auction of October 21, 2000**. Lot descriptions have been shortened. Prices realized are in Canadian dollars, and do *not* include the "Buyer's Premium" of 15%, or any applicable taxes.

- #1006 OX1 Officially sealed stamp folded over left side on NO 10 05, St. John's local cover \$3300
- #1011 J1 Postage Due (2) on St. John's 8 JLY/1939 cover to Harbour Grace with 184 and 245 (only 3¢). The Postage Dues are also postmarked JUL 8/39, early usage. \$160
- #1022 27a St. John's JU 21/1870 from St. John's to Dorset, England. \$190
- #1023 42 and 46 tied by 235 cancel from St. John's to Little Bay Islands, NO 4/86 \$375
- #1045 C12 Dornier on envelope EN2, from St. John's to England MAY 20 1932. \$625
- #1048 C18 Balbo on cacheted cover to Italy with JU 26 33 St. John's postmark. \$625

The balance of the items are postal stationery from Horace Harrison's exhibit
Newfoundland Postal Stationery 1873-1941, BNAPS Exhibits Series #18



- #1598 EN1 3¢ Violet Victoria envelope, Greenspond to Open Hall, FE 17/1890. \$85
- #1602 L1 2¢ Carmine & 2¢ Carmine KGV letter card mint w/reply intact. \$270
- #1603 L1b 2¢ Carmine KGV letter card *used*, Victoria Village MY 19 15 to Carbonear
One of two recorded used reply halves. \$875
- #1604 P1 1¢ Prince of Wales postal card overprinted SPECIMEN mint with two other cards on yellow and white stock mint. \$150
- #1605 P1 1¢ Prince of Wales card *used* St. John's DE 5/1875 to Harbour Grace. \$325
- #1611 P5 surcharged post card, 2¢ on 1¢ Prince of Wales *used* JU 12 89 to Birkenhead, England.
Very few used within provisional period. \$825
- #1612 P6 2¢ Carmine red and 2¢ Carmine red Victoria postal card *used* St. John's to Rotterdam, SP 19/92, and also a mint example. \$220
- #1613 P6a 2¢ Deep scarlet and 2¢ Deep scarlet *used* St. John's to Germany JA 5/00.
Latest recorded example. Also a mint example separated and rejoined. \$350
- #1629 P-E1c 1¢ Brownish orange Prince of Wales Trial Colour Essay on heavy card with wide margins - N background without shading lines. \$825
- #1630 P-E2 1¢ Green KGV postal card essay, TO in shaded letters before first address line. \$240
- #1631 P4-P1 2¢ Black Widow Queen postal card proof, entire on thin white proof paper
117 x 74mm mounted on 139 x 96mm. \$2050