

THE NEWFIE NEWSLETTER
OF THE NEWFOUNDLAND STUDY GROUP OF BNAPS

Number 85

November/December 2000



***John Butt at BNAPEX '97 Awards Banquet after receiving vermeil for
his exhibit on Revenue Issues of Newfoundland***

Our Chairman and editor, John Butt, died on September 28th at the age of 60 in an on-the-job accident. He was crushed between large cargo containers when a forklift driver accidentally pushed one of the containers against the other. He is survived by his wife, Loretta, and three daughters, Lisa, Lucinda, and Krista.

John was not only a prominent member of the Newfoundland Study Group and BNAPS but also was active in the St. John's Philatelic Society. The following tributes are from John's philatelic friends.

I was greatly saddened to hear of John Butt's fatal accident. For all of us, John's extensive knowledge of philately was always available to help solve philatelic problems. In addition, this knowledge was further shared by his articles in national and international philatelic magazines. As a member, John supported our Society over the years: as an exhibitor, a member of the executive, and most recently as the financial officer for our monthly auctions. We will all miss John. On behalf of the Society, I extend our sincerest sympathy to Mrs. Butt and her family. Len Barron, President of the St. John's Philatelic Society

Those who knew John, especially Newfoundland postal historians and philatelists, lost a good friend when he passed on so suddenly. How wonderful that he was able to exhibit his St. John's Town Cancells at the A.P.S. Show in Rhode Island and at the BNAPEX show in Chicago in August this year, and to receive such high mention at each show. In comparison it was like coming home from the Olympics in Australia with two medals. John was a very modest man and always without question willing to take on another philatelic task for the good of others. To his beloved wife, Loretta, and his three daughters and families we offer on behalf of the members of our Club, the Royal Philatelic Society of Canada, and the British North America Philatelic Society, our sincere condolences. He was a father, friend, and benefactor. Don Wilson, Past President, BNAPS

THE NEWFIE NEWSLETTER
OF THE NEWFOUNDLAND STUDY GROUP OF BNAPS

Number 85

November/December 2000

More Tributes to John Butt

It was with great sadness that I came to learn of the tragic death of our Editor and Chairman John Butt via an email from my good friend John Walsh. On such occasions it is difficult to put into words ones true feelings but there was a lot of room for thought for John's family back in St. John's. I met John on only one occasion and that was at the BNAPS Convention in Newfoundland. He impressed me with his wide knowledge of Newfoundland Philately and I could understand why the Newfoundland Specialized Catalogue was a joint effort between him and John Walsh. We across the "Pond" extend our deepest sympathy to his wife and family and will remember John as an exceptional philatelist and a good friend to members of the Newfoundland Study Group.

Colin D. Lewis, Swansea UK

Editor's Note: There were many other tributes to John recently published in the October 2000 issue of the **St. John's Philatelic Society Newsletter**. The last one shown here is from a friend of over 25 years, John Walsh, which he entitled *John Butt — tribute to my closer other brother*. In a lengthy tribute, he starts by telling how he met John Butt (stamp club meeting) and how he convinced him to start specializing in the postal issues of Newfoundland. John goes on -

In 1983, John was the deciding factor in us putting on the 400th Anniversary Sir Humphrey Gilbert Exhibition. What a show he did. Super. Then in 1984, he and I suggested that St. John's has to hold the 500th Cabot Anniversary stamp show. The Royal Philatelic Society of Canada (14,000 members) was booked up (we couldn't change their minds), so we offered it to the British North America Philatelic Society (1200 members).

In 1987, the third international stamp show in Canada's history was happening --- CAPEX '87 in Toronto. After much cajoling I coaxed John to come with me. John and I talked Ed Wener, in Guelph, Ontario, into letting us stay with him. Remember this CAPEX show was for 12 days. What a time we had! But that's another story. At one point during the show we met Robson Lowe, Robert Pratt, and Bill Lee, all at the same place. What collective Newfoundland stamp knowledge was in one place that we could soak up, and we did. It was at this show that we decided to do the Newfoundland Specialized Stamp Catalogue. Both Lowe and Pratt strongly encouraged us to research and print our findings. Back we came rejuvenated to pursue our dream. In 1988, we put out our first edition. Encouragement rolled in and we put out other editions. The 4th edition came out in 1998. John and I won our local C. FRANCIS ROWE AWARD for research for our efforts. And the Collectors Club of Chicago awarded the two of us the prestigious PRATT AWARD for the catalogue. The 5th edition is in the works.

Together, John and I exhibited, mostly locally, but we often sent our research project, the Newfoundland Specialized Stamp catalogue, off to national shows to be judged in competition. Our efforts were often rewarded with vermeil medals. We then could enter the catalogue in international stamp and literature exhibitions. In PACIFIC '97 (USA) a large silver was received; in LONDON 2000 a silver was awarded. It is in MADRID 2000 for this October.

**THE NEWFIE NEWSLETTER
OF THE NEWFOUNDLAND STUDY GROUP OF BNAPS**

Number 85

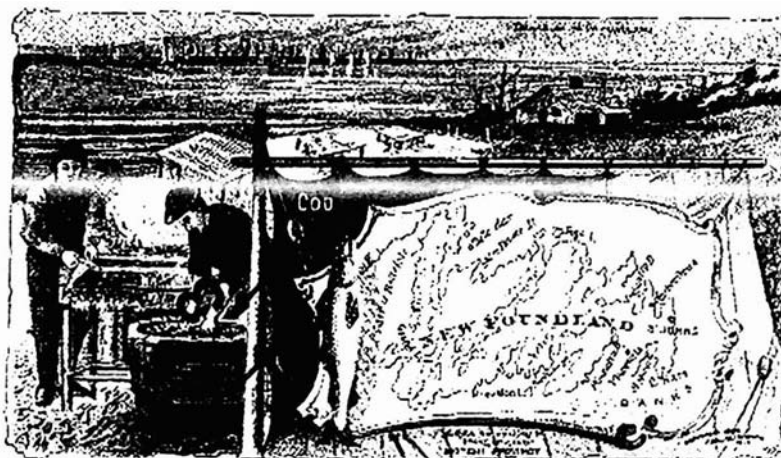
November/December 2000

Tributes to John Butt Concluded

Throughout all these years, John was a steady member of the British North America Philatelic Society (BNAPS). His collector friends in this society number in the hundreds. A friend, Clarence Stillions, got him interested in taking over as editor of the Newfie Newsletter. What a job John has done with this research paper. Many helped, and John, with daughters Krista and Cindy, presented it in a readable form. In 1997, the Cabot 500th Anniversary happened. John in conjunction with Don Wilson pulled off a superb stamp exhibition. It is still talked about at every BNAPS convention. What a time was had by all from John's and Don's efforts. Thank you, guys.

Our local club has been well served by John's efforts. How else would our monthly stamp auctions have happened, if John wasn't a lover of stamps. John and I just got back from two stamp shows: STAMPSHOW 2000 in Rhode Island and the BNAPS show in Chicago. John received a vermeil medal at both shows. What a time we had! We discussed our adventures at the first September 2000 meeting. We traveled and stayed with a dear friend, and fellow Newfoundlander, Randall Martin and his wife Shirley. As soon as we got there Shirley left (abandoned?) us to our own devices. What fun we had. Thank you for the adventures. John and I have spoken about the antics of this trip and how he became "my spouse". What laughs we shared. Then this sudden and sad news....

Without Loretta allowing us to borrow John, especially on Wednesday nights, we would have been greatly diminished in this life and our stamp collecting experiences. Our hearts go out to you, Loretta, in this sadness. May you and Cindy, Lisa, and Krista receive comfort from our and my life-long friendship with John and your dad. Please accept our condolences to you all. John Walsh



1889 Card From Arbuckle Bros. Coffee Co. Honoring Newfoundland

THE NEWFIE NEWSLETTER
OF THE NEWFOUNDLAND STUDY GROUP OF BNAPS

Number 85

November/December 2000

BNAPS Newfoundland Study Group

Financial Statement as of August 15, 2000

	Item	Debit	Credit
Aug 15, 1999	Balance Forward from Previous Year		\$499.36
	Bank Interest		.36
	Service Charges (Cheques, etc.)	2.85	
	BNAPS Stipend (applies to 1998/1999 memberships)		239.00
	BNAPS Stipend (payment has been applied for, but not received to date)		0.00
	Membership		0.00
	52 Paid Memberships (14 memberships were paid in advance in 1998/1999)		676.00
	2 Membership dues paid in arrears		26.00
	Donations		32.15
	Newsletter Postage	423.13	
	(6 Issues) Typing	120.00	
	Paper and Copying	394.35	
	Misc. Stationary	28.99	
	Colour copies for special issue	338.00	
	Totals	1307.32	\$1472.87
Aug 15, 2000	Balance on hand end of this year		\$165.55

MEMBERSHIP RENEWAL FORM

BNAPS NEWFOUNDLAND STUDY GROUP

Name: _____

Address: _____

Postal Code: _____ E-Mail: _____

Telephone: (Home): _____ (Office): _____

Annual Fee: \$13.00 (Canadian Dollars)
 \$9.00 (US Dollars)
 £6.50 (British Pound)

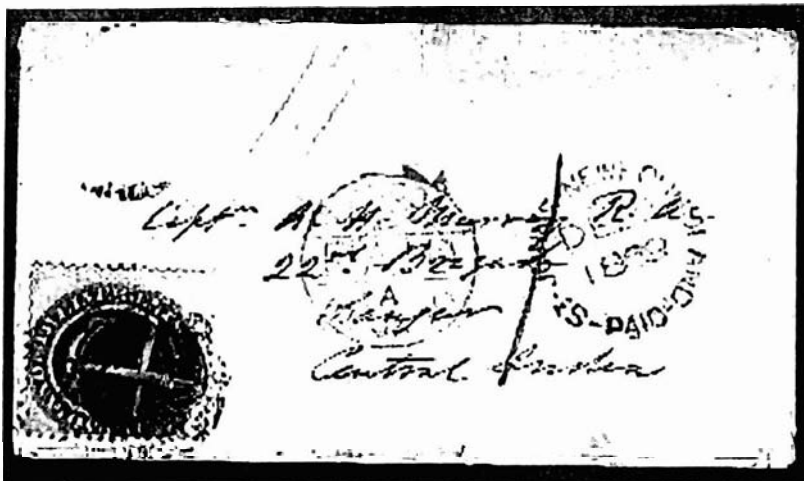
Please make your cheque or money order payable to:

BNAPS Newfoundland Study Group

care of the Treasurer

Martin Goebel, 79 Highland Dr., St. John's, NF, CANADA, A1A 3C3

*All members are requested to kindly remit this form for our accounting and mailing purposes
Thank you!*



THE 1869 MYSTERIOUS COVER TO INDIA

The associated cover from St. John's to Saugor, Central India is an unique example of First Cents usage to India. Robert H. Pratt in his Newfoundland Cents Issue Census, page 83, records this cover and conjects that there are one or two stamps missing. He also indicates a 30 Cent rate to India. .

What I am unable to establish is the rate to India from Newfoundland in December 1869. There is certainly one stamp missing, as can be observed from the base of a partial circular obliterator shown just above and to the left of the title Captain. There is no evidence of a second missing stamp from the cover, whilst the existing 12 cents stamp (First Issue on thin paper) appears well tied by a redundant St. John's cork filled hammer. What Pratt has ignored is the fact that the cover carries a London paid mark and a 1/1 (1 shilling one penny) red crayon rate mark. Postal Historians of Newfoundland are all aware that the rate to G.B. for a cover up to ½ ounce in weight was 12 cents at the time of this mailing. What may be less well known are the rates between G.B. and India.

Mail from G.B. to India could be forwarded via British Packets from Southampton at a rate of nine-pence per ½ ounce. It was also possible to forward mail via Brindisi, Italy at a rate of one shilling and four-pence per ½ ounce. In the case of this letter that is addressed to an Army Officer there was a concessionary rate available from G.B. to India that cost six-pence via Southampton or ten-pence via Marseilles both per ½ ounce.

This letter does not fit any of the above rate structures. However, there was a 1 shilling one penny rate to India for non- concessionary correspondence via Marseilles. It is my belief that the letter to India was forwarded by that route, whilst the London Paid CDS together with the manuscript rate bears this out. The concessionary rate for officer's letters may well have not applied to correspondence transiting G.B.

We now come to the question of the missing stamp. If the value of the missing stamp was 24 cents that would equate to one shilling Sterling. If that was the case the cover would have been underpaid by two cents (one penny) from Newfoundland. The London GPO would have determined the route by which it would have been forwarded and marked up the cover accordingly. The unanswered question remains as to where the 24 cents stamp was removed. Maybe someone at GPO London removed it at the time the paid hammer was applied, at least it would be nice to think that is what happened.

The last item to be considered is the one-penny accountancy mark applied in red crayon to the front of the cover. This is in a slightly different shade of red to the manuscript 1s1d. I do not consider this unusual because often at this time manuscript marks were applied by different departments. The 1d was probably marked up when the item first arrived in England from Newfoundland whilst the ongoing charge to India would have been applied once the route the cover would take, had been established. However, countering this view could be the answer to the question "who is the one-penny credit due to?". Is it Newfoundland as the portion of the 12 cents charge to England or is it due to GB from India to make good the one-penny deficiency?

The complete markings on the cover are:

1. Mailed at St. John's December 22 1869
2. Transited London January 10 1870
3. Via Sea Post Office February 2 1870 (backstamp)
4. Saugor backstamp receiver February 17 1870

Transit time was 57 days.

The Trans-Atlantic crossing was via the Inman Line "Etna".

The cover is ex Captain Campbell.

If anyone has a view about this cover please write to the Editor with your comments. Good Newsletters need responses to articles such as this be they further questions, opinion, conjecture, constructive criticism or come what may. We all look forward to receiving our copy of the Newsletter so let us all try and put it to good use.

THE NEWFIE NEWSLETTER
OF THE NEWFOUNDLAND STUDY GROUP OF BNAPS

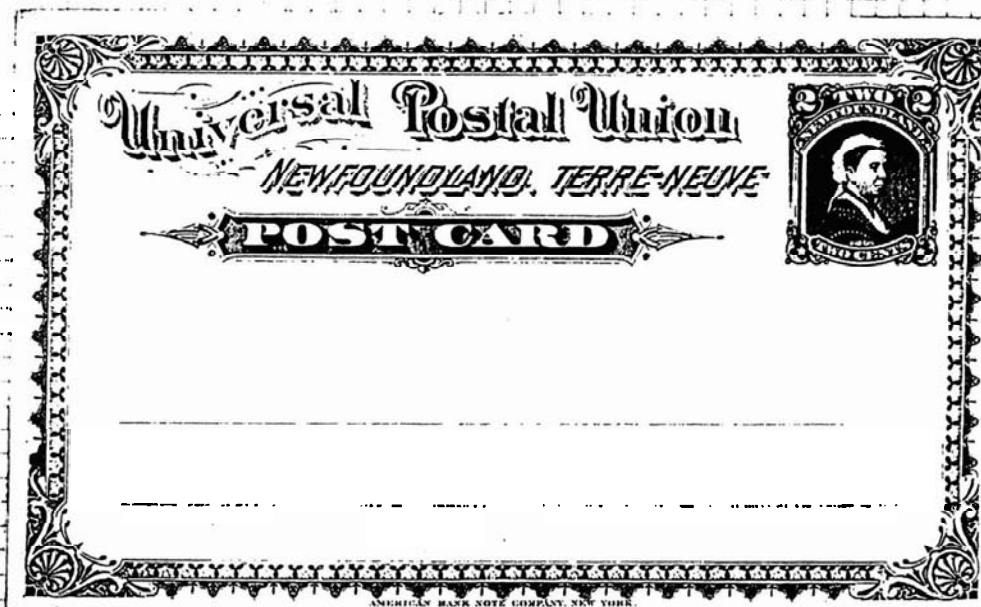
Number 85

November/December 2000

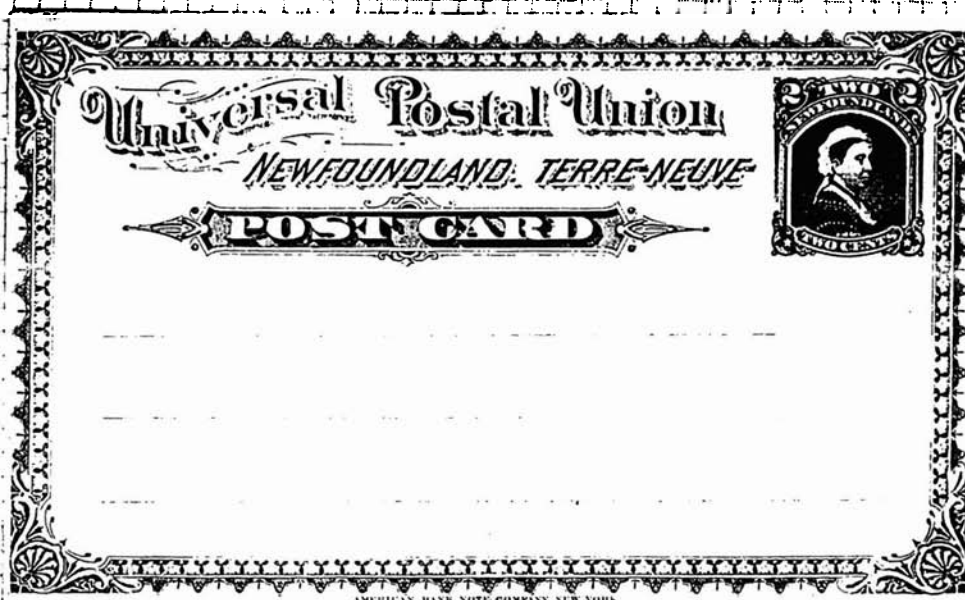
Newfoundland's Postal Stationery 1873-1941 - Horace W. Harrison (Pages 14-15)

THE FIRST U.P.U. CARD

ALTHOUGH A SINGLE PRINTING OF 30,000 IS ASSUMED,
SOME CARDS APPEAR TO BE ON VERY WHITE STOCK
INDICATING THAT THERE MAY HAVE BEEN TWO
WHITE



YELLOWISH



RE-ENTRY IN IMPRINT SHOWING BEST IN "COMPANY"

THE NEWFIE NEWSLETTER
OF THE NEWFOUNDLAND STUDY GROUP OF BNAPS

Number 85

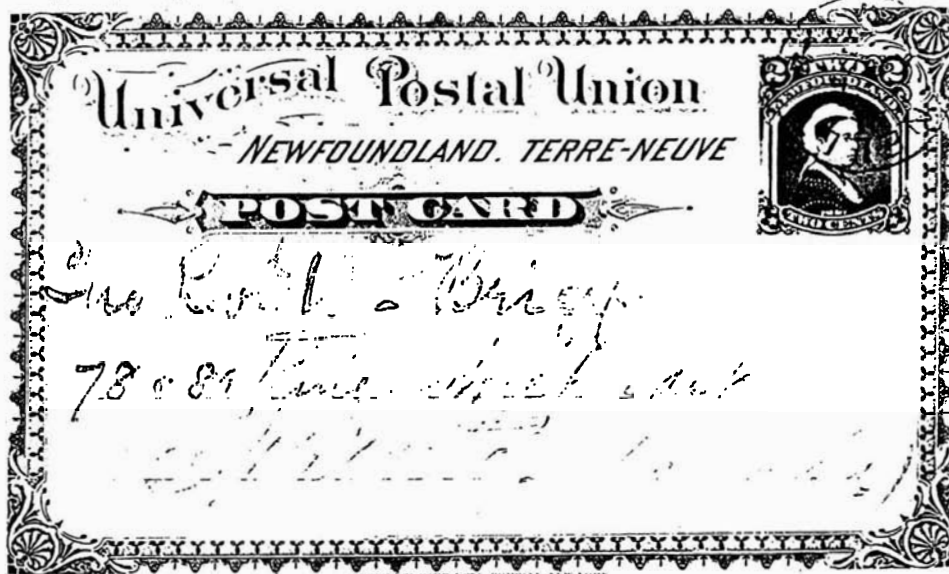
November/December 2000

THE FIRST U. P. U. CARD

THE 24 U. P. U. POSTAL CARD RATE WAS ESTABLISHED BY
THE SAME 1878 CONFERENCE WHICH ADMITTED BOTH
CANADA & NEWFOUNDLAND TO THE UNION.

CHANNELL, VIA ST. JOHN'S, TO TORONTO

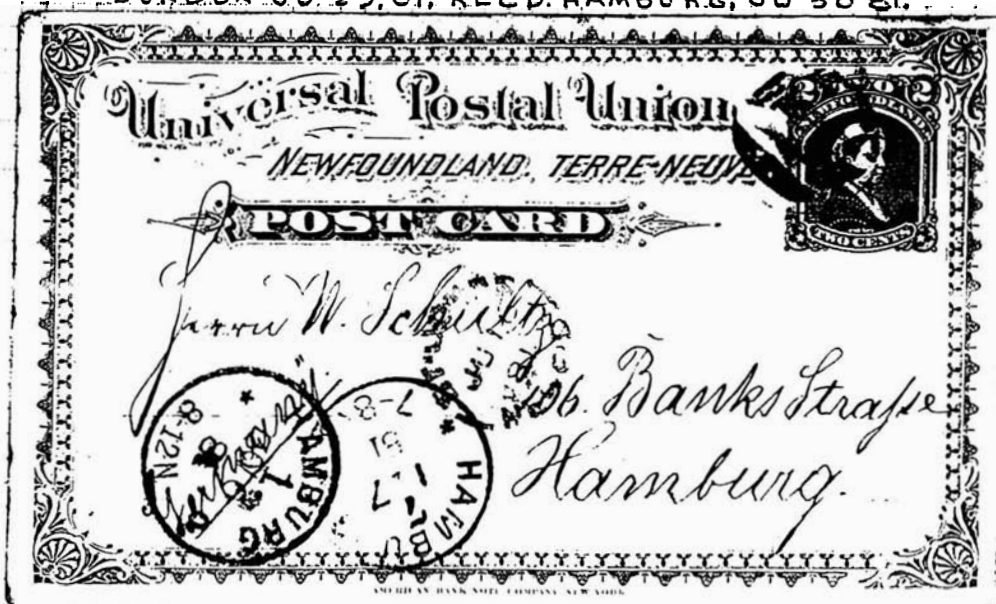
ST. JOHN'S
(MY 17 81
NEWF'D)
BACKSTAMP



CHANNELL
MAY
11
1881

REC'D AT TORONTO MAY 25, 1881

ST. JOHN'S NEWF'D. JUL 16, 81 TO GERMANY, VIA
LONDON JUL 29, 81; REC'D. HAMBURG, JUL 30 81.



AMERICAN BANK NOTE LOST THE CONTRACT FOR BOTH ADHESIVES
AND POSTAL STATIONERY TO BRITISH AMERICAN BANK NOTE OF
MONTREAL, WHICH UNDERBID THE NEW YORK COMPANY

SHIFTED SURCHARGE ON 1897 PROVISIONAL

I thought I was aware of just about all the varieties of the 1897 Newfoundland surcharges (Scott 75-77), from classic auctions such as the Dale/Lichtenstein auctions of 1969-1971, as described in Robson Lowe, Boggs, Robert Pratt's extensive 1986 article, or in the Newfoundland Specialized Stamp Catalogue. Then, last April at WESTPEX (San Francisco) I bought the stamp pictured below from dealer Stanley Pillar.



Figure 1.

Yes, there are **three** bars because of a 5.5mm shift downward of the surcharge and bars (measured from the vertical midpoint of the bar over Victoria's head, to the point of the right 3 above, its intended placement). The bar at the top was designed to cross the 3 at the bottom of the stamp above. I paid a nominal amount for this mint (technically "unused") stamp, and added it to my surcharge exhibit. A few months later, other unused examples mysteriously showed up.



Figure 2



Figure 3



Figure 4

THE NEWFIE NEWSLETTER
OF THE NEWFOUNDLAND STUDY GROUP OF BNAPS

Number 85

November/December, 2000

Figure 2 on the previous page was lot #268 in Jim Hennok's auction of September 16, 2000 and sold for \$308 CDN (including commission). Using the same standard as before, it is shifted downward 6.75mm. Five days later, the stamps in Figure 3 and Figure 4 were sold by H.R. Harmer of New York. Figure 3 has no bar at the top because it was from the top row of the block of 50 when surcharged (there was no stamp above, in other words). It was shifted downward 7.5mm, and sold for \$3779. Perhaps the buyer bid that much thinking he/she had purchased an error, since the stamp had only one bar, but the stamp in Figure 4, sold for even more - \$4107. It was shifted downward 7mm.

Since all stamps are unused they might have been printer's waste - but if so where have they been the last century? They are unlikely to be forgeries and the last three have certificates. They *may* have come from the right side of the same block of 50 although photos shows different shades of gray. The 3¢ Victoria, however, had many different shades due to fugitive ink, and catalogue color photography only has to be *close*.

I tried measuring the distance between the "normal" top bar and the extra one above, to see if I could determine from which rows in the block of 50 the stamps came from. (I have a complete setting to measure against.) We know Figure 3 is from top row. Figure 1 appears to be from row four as does Figure 4. Figure 2 looks to be from row 2. I tried to match perforations between my stamp (Figure 1) and 4, thinking my stamp might be one stamp to the left since the shift obviously increased moving across the block of 50 to the right. I could find no match.

Some people says "theories" are merely "guesses" but that has not stopped me yet. These stamps have such similar characteristics (downward shift as well as slant to the right) that they may have come from the right side of the same block of 50. *If anyone has seen similar stamps or has an alternative theory, please contact the editor.*

Bob Dyer

A New Editor's PLEA FOR HELP!!

Taking over the editorship of the **NEWFIE NEWSLETTER** will be a significant challenge since it was in the capable hands of John Butt for so long. I need your help - there was no real backlog of items ready to go into the newsletter, so I need contributions **badly**. I plan to continue to use Horace Harrison's Exhibit Book #18 **Newfoundland Postal Stationary 1873-1941** from where John left off in the last newsletter, probably at the rate of two pages per issue. I also plan to start running auction results starting in the next issue. That still leaves almost 8 pages available. You can send material by mail or email (address below). I can type handwritten items. You probably have an interesting Newfoundland stamp or cover, or story others would like to know about. If you want to discuss a contribution you can call me at (707)763-2934. There are not many active Newfoundland collectors I am aware of where I live, in Northern California! *In 2001 we plan six ten-page newsletters.*

Also note Page 4. If we have not yet received your dues for 2001 the box towards the bottom will have an X in it. *Lastly, thanks to our supporting dealer/members, Gary Douglas, R.J. McGillivray, J.C. Michaud, and John Jamieson.*

Chairman & Editor: Bob Dyer, 1708 Granada Court, Petaluma, Ca 94954 nrdyer@home.com
Treasurer: Martin Goebel, 79 Highland Drive, St. John's, NF, Canada A1A 3C3
