

**THE NEWFIE NEWSLETTER
OF THE NEWFOUNDLAND STUDY GROUP OF BNAPS**

Number 76

January/February 99

EDITOR'S NOTES

Welcome to the 76th edition of our Newsletter. The weather in St. John's has been for the most part wet, with a fair amount of sunshine, but little snow fall. Great weather for making exhibits for the upcoming stamp shows. Newfoundland postal history has been showing up with great regularity at recent auctions, i.e. Robert Lee, Nutmeg Firby, etc. I hope I get lucky!

In this issue:

Page 2 *Harmers Rarity Auction (Thanks to Bob Byer)*
Page 3,4,7 *Doug Campbell's Golden Oldies*
Page 4-7 *Railway Mail Clerks (Conclusion)*
Page 8-10 *Kevin O'Reilly's Labrador Offices*

EXHIBITION NEWS

Member Bob Dyer exhibited "Surcharges on Newfoundland Stamps 1897-1947" at U.S.A. national show recently. Bob was not happy with his award. I don't blame him, a great exhibit (but a vermeil isn't too shabby). Congratulations Bob!!

Former member, John Walsh, garnered a gold at a recent Toronto national show for his most excellent exhibit the 1897 Royal Family Issue.

SUPPORT OUR DEALER MEMBERS

Gary Douglas, Terra Nova Stamps, P.O. Box 42094, 128 Queen Street South, Mississauga, Ontario, L5M 4Z0
R.J. McGillivray, STANLEY STAMPS, 1096 Richard's Street, Vancouver, British Columbia, V6B 3E1
J.C. Michaud, Box 31248, Halifax, Nova Scotia, B3K 5Y1
John Jameison, Saskatoon Stamp Centre, P.O. Box 1870, Saskatoon, Saskatchewan, S7K 3S2
Ed Wener, INDIGO, P.O. Box 89, Orewa, Hibiscus Coast, New Zealand

Chairman & Editor: John Butt, 264 Hamilton Avenue, St. John's, NF, A1E 1J7
Treasurer: Martin Goebel, 79 Highland Drive, St. John's, NF, A1A 3C3

HARMER'S OF LONDON AUCTION , NOV. 18, 1998 PRICES REALIZED

This auction listed a number of scarce Newfoundland air mail items. Prices for the better items are listed below, in Pounds, including 15% commission. 18 unsold lots returned for an encore at their January 28, 1999 sale. Catalogue numbers are from Scott's and N.S.S.C.

#113. Hawker (C1, AM1) on clean looking cover.	£8625
#115. Martinsyde supplemental cover, few faults with C2, AM3	2185
#118. Full setting of 25 of Alcock air mail, C2, AM3, F-VF, hinged	2530
#120. C2, AM3 on cover carried on first Atlantic Crossing, bit soiled	1725
#123. Full setting of 25 of Halifax air mail, C3, AM4, almost VF, hinged	1840
#124. Another one, F-VF, never hinged	1955
#128. De Pinedo o.g. single, just about VF (C4, AM5)	17250
#129. De Pinedo on cover - <i>beautiful cover !!!</i>	6900
#130. Another one - almost as nice!	6900
#136. Columbia (C5, AM6). Hinged block of four - well centered!	15000
#137. VF Columbia on St. John's cover, no fold	3450
#138. VF Columbia on scarcer Harbour Grace cover, small fold	4025
#145. Dornier with inverted surcharge (C12a, AM13b), VF, hinged	5750
#146. Dornier, inverted surcharge on N.H. block of four, V.F.	27600
#152. Balbo (C18, AM19) VF, N.H. block of four	690
#154. Balbo cover with Shoal Harbour cancel, cachets, etc. F-VF	1610
#157. Balbo cover, like above but with Balbo and 3 pilots signatures	1610
#158. Balbo, with inverted surcharged, skillfully repaired.	11000



Lot 146

Labrador

"THE FIRST TRAVELLING POST OFFICE."

"Coastal North" Mail-boat.

1882-83.

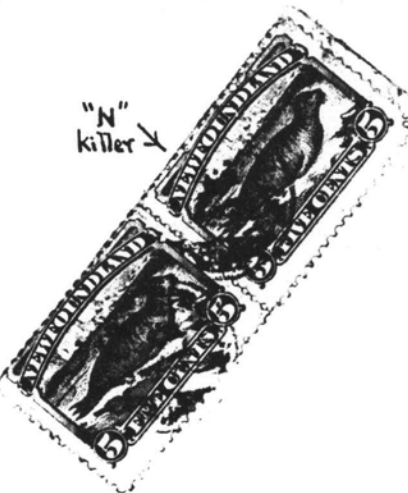
In 1875, according to Boggs, regular sailings were arranged to Labrador, so that people in the settlements could receive their mail more frequently and at stated intervals. However the first distinctive T.P.O. handstamps did not appear until several years later.

In 1882, the "N" killer was introduced for use on the Coastal North mail-boat. It was either used on its own, as in this case, or in conjunction with the first T.P.O. date-stamp "Labrador - Nfld" (Pratt).

Normally the only other marking would have been the St John's datestamp.

"St John's" →

1883.

"N"
killer →10c double rate
to U.K.

Reverend
W. J. Newman
Hockworthy
Devon
England

1883. A letter from an outpost to Hockworthy, via St John's, July 4, and Wellington on July 12. 2x 5c SG 48.

Labrador
Mailboats in the 1890s.

According to a contemporary, the Rev. E. Petrett (Moravian mission at Hopedale) the mailboats—small steamers or schooners—were:—

- 1894. "Gleaner," "Lady Glover."
- 1896. "Zebra."
- 1897. "Springhill" bringing a set of the Jubilee stamps.
- 1898. "Washington" which he called a "Norwegian tub".
- 1899. "Labrador."

The letter, which contained Rent rolls for 1880-83, would probably have come from one of the clergymen or missionaries in a settlement in Labrador or north Newfoundland called at by the boat.

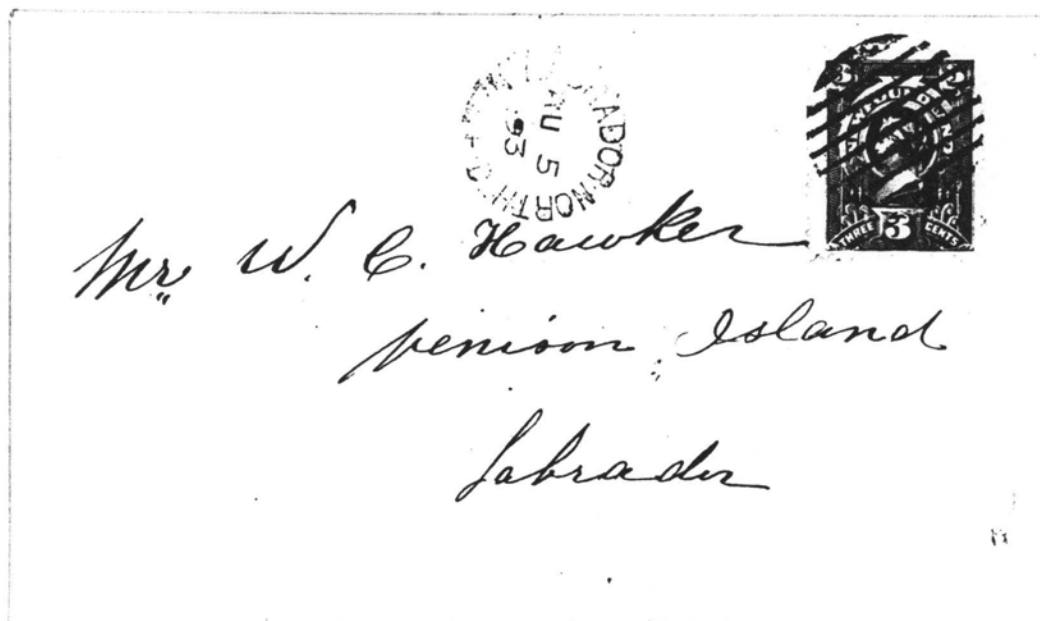
Labrador

TRAVELLING POST OFFICES.

"Labrador North."

(a) To Venison Island, Labrador.

1893.



← "Labrador
North."
(1883-93).

Internal
Letter.

August 5, 1893. Labrador North to Venison Island, Lab. 3c 56c 56.

The terminal points for the Labrador North steamer were Nasin in north and Battle Harbour in South, which was the transfer point to the Coastal T.P.O. North steamer. The service operated from about mid July to late October.

Department of Posts & Telegraphs
Railway Mail Clerks 1898-1932

Railway T.P.O.

James Cox	1891-1906
A.W. Shano	1905-1906
Samuel Bradbury	1905-1920
Philip Moore	1905-1912
William Blackler	1907-1914
Issac Evely	1907-1914
Robert Peach	1907-1917
George Collins	1907-1911
Gaudin Du Tot	1907-1911
William Facey	1907
John Parrell	1910-1911
Thomas Grant	1911-1926
Walter Crosley	1911-1914
Thomas Powell	1911-1914

Department of Posts & Telegraphs
Railway Mail Clerks 1898-1932

Railway T.P.O.

Thomas Kelley	1912-1914
W. Crossman	1912
James Joy	1912-1914
H.J. Cashman	1912-1914
William Squires	1913-1918
Charles K. Night	1912-1914
James Whitten	1913-1920
Patrick Hickey	1913-1931
Patrick Williams	1913-1925
Allan Collins	1914
William Perchard	1914-1924
W. Hogarth	1915-1924
James Fowler	1915-1924
W. Kennedy	1915-1920
M. Mackay	1915-1917
J.G. Kieley	1915-1924
Abram Parsons	1915-1932
Gus Norberg	1915-1932
Joseph Joy	1916-1924
Joseph Curtis	1916-1931
L.M. Knight	1916-1917
John Legge	1916
Stanley Adams	1916
T.J. Bambrick	1917
George Squires	1917-1923
Giles Smith	1917-1920
Daniel Fergeson	1917
Abia Purchase	1918-1924
James McFatridge	1919-1920
J. Boland	1919-1925
George Squires	1920-1923
W.G. Tibbs	1920-1931
John A. Butt	1920-1932
John Baird	1922
John Kemp	1924-1931
Charles Cramm	1924-1931
Patrick Whitty	1925-1931
J. Crickard	1925-1931
Reginald Guilfoyle	1925-1932
J.J. Davis	1925-1932
V.L. Billard	1925-1931
Howard Cutler	1926-1932
John Guppy	1926-1930

*Department of Posts & Telegraphs
Railway Mail Clerks 1898-1932*

Railway T.P.O.

<i>A. Williams</i>	<i>1930</i>
<i>Patrick Whelan</i>	<i>1930</i>
<i>Tobias Ledrew</i>	<i>1930-1931</i>
<i>Justin McCarthy</i>	<i>1931</i>
<i>James French</i>	<i>1931</i>
<i>Herbert Angel</i>	<i>1931</i>
<i>George Nicholl</i>	<i>1932</i>
<i>Eleazer Hicks</i>	<i>1932</i>
<i>S. Bradbury - 1st Superintendent</i>	<i>1921</i>

South Coast T.P.O.

<i>John Dunphy</i>	<i>1905-1913</i>
<i>Jacob Poole</i>	<i>1914-1918</i>
<i>W. Squires</i>	<i>1919</i>

Straits T.P.O.

<i>Jacob Poole</i>	<i>1913-1914</i>
<i>J. Boland</i>	<i>1915</i>
<i>John Roberts</i>	<i>1916-1919</i>
<i>Howard Cutler</i>	<i>1920- 1921</i>
<i>Walter Skanes</i>	<i>1921-1928</i>
<i>Walter Young</i>	<i>1929-1932</i>

Trinity Bay T.P.O.

<i>John Diamond</i>	<i>1900</i>
<i>Stephen Jeans</i>	<i>1901-1912</i>
<i>George Field</i>	<i>1913-1916</i>
<i>James Tarrant</i>	<i>1917-1919</i>
<i>W.H. Adey</i>	<i>1919-1920</i>
<i>Stephen Penney</i>	<i>1921-1930</i>
<i>Edgar King</i>	<i>1931</i>

V.L. Billard	Railway T.P.O.	1925-1931
	P.A.B. & N. Sydney	1921-1924
	Kyle	1919-1925
James Gushue	Port Aux Basques	1914-1918
	S.S. Bruce	1905-1911
	S.S. Bruce II	1911-1912
		1914-1916
	S.S. Invermore	1913-1914
	Kyle	1913-1914
Issac Evelly	Railway T.P.O.	1907-1914
	S.S. Bruce	1913-1914
	Sydney	1914-1932
Gaudin Du Tot	Railway T.P.O.	1907-1911
	Sydney	1911-1932
S. Bradbury	Railway T.P.O.	1905-1920
	First Superintendant	1921
J. Boland	Railway T.P.O.	1919-1925
	Straits T.P.O.	1915
Howard Cutler	Railway T.P.O.	1926-1932
	Straits T.P.O.	1920-1921

(b) To Germany.



Moravian mission letter.

← "Labrador North."

"Coastal T.P.O. North" on back.

SQUARE ISLANDS/SQUARE ISLAND

Lat. Long.: 52° 44' N 55° 50' W

Population: 75 (1971)

Origin of Name:

Opened: 1888 [Walsh and Butt] (as Square Islands)
 1890 (Way Office) [Almanac] [Richard Luther, waymaster] (as Square Island)
 1892 (Post Office) Labrador North [Almanac] [Richard Luther, postmaster] (as Square Islands)
 1893 (Post Office) [Pratt] [Mrs. Bendle, postmaster] (as Square Island)
 before 1948, year-round office, no money order service (as Square Islands)
 Apr. 1, 1949 Non-accounting MOON 54597 (as Square Island)
 POCON 006432
 June 20, 1977 Changed to a seasonal summer office
 June 20-Sept. 30, 1977
 June 1-Sept. 15, 1978
 June 1-Sept. 28, 1979
 June 1-Sept. 30, 1981
 June 7-Sept. 24, 1982
 June 15-Sept. 17, 1983
 June 8-Oct. 1, 1984
 ?-Sept. 16, 1985
 ??
 June 25-Sept. 29, 1990

Postal Code: A0K 5M0

TYPE	COLOUR	PROOF DATE	EARLIEST	LATEST
Bla	Carmine	Jan. 30, 1951	Jan. 6, 1956	Aug. 17, 1958
C1		Aug. 7, 1965		
P1		Mar. 13, 1973	July 27, 1974	
P2		Sept. 20, 1976	Sept. 5, 1976	Jan. 24, 1977
R1a	Carmine		Jan. 6, 1956	

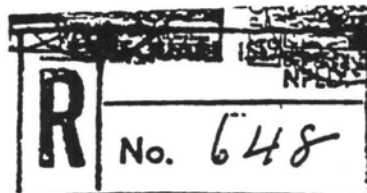


B1



C1

006432

SQUARE ISLANDS
N F

TRIANGLE

Lat. Long.: 52° 50' N 55° 51' W

Population: 46 (1965)

Origin of Name:

Opened: 1888 [Walsh and Butt]

1890 (Way Office) [Almanac] [Jeffers, waymaster]

1892 (Post Office) Labrador North [Almanac] [Jeffers,
postmaster]

Closed: 1893?

1902 [Walsh and Butt]

Reopened: ?1966 Non-Accounting MOON

POCON 006467

June 28-Oct. 22, 1973

June 25-Oct. 7, 1974

June 23-Oct. 1, 1975

June 18-Sept. 15, 1976

June 20-Sept. 27, 1977

June 1-Sept. 15, 1978

June 7-Sept. 4, 1979

June 25-?, 1980

June 25-Sept. 7, 1981

June 25-Sept. 25, 1982

Postal Code: AOK 5N0

TYPE	COLOUR	PROOF DATE	EARLIEST	LATEST
C1		Apr. 19, 1966	June 26, 1978	June 30, 1978
P1		Mar. 13, 1973		



C1



P1

TURNAVICK

Lat. Long.: 55° 18' N 59° 21' W

Population:

Origin of Name:

Opened: 1901 [Walsh and Butt]

Closed: 1931 [Walsh and Butt]

No postal markings known.

TURNAVICK EAST

Lat. Long.: 55° 18' N 59° 21' W

Population:

Origin of Name:

Opened: 1888 [Walsh and Butt]

1890 (Way Office) [Almanac] [William Hennessey, waymaster]

1892 (Post Office) Labrador North [Almanac] [William

Hennessey, postmaster]

1893 (Post Office) [Pratt] [William Hennessey, postmaster]

Closed: 1919 [Walsh and Butt]

No postal markings known.

TURNAVICK WEST

Lat. Long.: 55° 15' N 59° 20' W

Population:

Origin of Name:

Opened: 1888 [Walsh and Butt]

1890 (Way Office) [Almanac] [William Bartlett, waymaster]

1892 (Post Office) Labrador North [Almanac] [William

Bartlett, postmaster]

1893 (Post Office) [Pratt] [William Bartlett, postmaster]

Closed: 1919 [Walsh and Butt]

No postal markings known.