



BNAPS NEWFOUNDLAND STUDY GROUP NEWS

Edition #36 – May 24, 2026

Chairman & Editor: Malcolm Back, 97 Stuart Street, Stouffville, ON, L4A 4S4, mback1217@rogers.com
 Treasurer/Circulation: Martin Goebel, 13 O'Mara Place, St. John's NL, A1A 5B7, goebel@nf.sympatico.ca

From the Editor: Just a reminder, I still need articles for the Newsletter. Please consider writing something: a recent acquisition, a favourite cover, a favourite stamp issue, etc.

ORAPEX 2026

Orapex 2026 has come and gone. As usual this was a very good show with great exhibits, good dealer representation and great presentations.

The Newfoundland Study Group held a session with presenter Blair Ashford giving a terrific talk on Newfoundland Postal History and how he researches the covers to delve into the History of each cover and the resources he uses. It was inspiring to me and I have asked Blair to consider giving this talk as a ZOOM session to the membership. (Details to be announced)

SHOW SCHEDULE

June 6-7 2026	<p>Quebec City, Quebec Hugo Deshayé Philatelist Inc, & Gregoire Teyssier Postal History: The Quebec City Old Paper Show Inc. (Le Salon du vieux papier de Quebec). Saturday 10 to 5:30, Sunday 10am to 3pm. 22 dealers in attendance: stamps, postal history, covers, postcards, old posters, old papers, archives and antiquarian books, supply free parking and \$5 admission on Saturday, free admission on Sunday. Free appraisals. EXHIBITION 1 to 2 pages exhibition sponsored by Eastern Auctions Ltd and Gary J. Lyon Philatelist Ltd, SHPQ and BNAPS BREAKFAST & CONFERENCES, door prizes, refreshments and lunch booth. This is an excellent opportunity to combine a nice weekend in Quebec City with a great paper show. Visit our Facebook page and website. In partnership with the SPQ, SHPQ and CCQ. Travelodge Hotel and Convention Center, 3125 Blvd Hochelaga, Quebec City. Organized by CSDA members Hugo Deshayé and Gregoire Teyssier. Information e-mail: salonduvieuxpapierdequebec@videotron.ca Website: https://svpq.ca/</p>
----------------------	---

BNAPEX 2026 Valleyfield Quebec

Hôtel MOCO Valleyfield and Baie Saint-François

BNAPEX 2026 Valleyfield, Quebec BNAPS convention, exhibition
and bourse 17-20 September 2026

Thursday - BNAPEX prelude: full-day bilingual guided tour of Montreal
Friday (10:00-17:30) Saturday (10:00-17:30) Sunday (10:00-15:00)

Convention venue Hôtel MOCO Valleyfield
40 Av du Centenaire
Salaberry-de-Valleyfield, QC J6S 3L6
[Hotel reservations](#)

Hosted by [La Société d'histoire postale du Québec \(SHPO\)](#)
[BNAPS Lower Canada / Bas Canada Regional Group](#)

NOTE: We have booked a **Study Group Session on Saturday, September 19th**. If you are attending and would like to give a presentation, please contact me ASAP. The deadline for inclusion in the printed program is **June 15, 2026**.



Editor's Note: The Feb. 2026 issue (Vol. 12, No. 1) of *Dots and Scratches*, the newsletter of the Re-entries and Constant Plate Varieties Study Group, published an article by Earl Noss, “3c Labrador Publicity Issue”, that discussed several re-entries on that stamp. In his description of the first re-entry in the article, a prominent one, Earl stated that the re-entry's plate position was unknown. Leopold Beaudet sent the following comment on the article to newsletter editor James Jung and copied me since the article dealt with a Newfoundland stamp:

Regarding Earl Noss's article on the Newfoundland 1928 Publicity Issue 3c, the first re-entry in the article is listed in the new Trajan Catalogue. The catalogue states that the position is 83. This stamp exists in blocks showing the plate number for plates 2 and 3. See John Walsh's exhibit of plate numbers on Newfoundland stamps in the ORE area of the BNAPS website. Not being a Newfoundland collector, I don't know if a plate 1 was prepared as well. The re-entries would come from just one of the plates. Is it known which one?

I published the comment on page 1 of issue No. 203 of the Newfoundland Study Group newsletter but erroneously attributed the comment to James Jung rather than Leopold Beaudet. Alongside the comment, I reproduced one of the re-entries that Earl Noss illustrated in his article. This created some confusion because, unfortunately, the re-entry I reproduced was not the one that Leopold referred to in his comment. My apologies to both James and Leopold for these errors.

To step back for a moment, the Trajan and Unitrade catalogues list three printings of the 3¢ Labrador Publicity Issue:

- No. 147: the original printing issued in 1928. All the re-entries in Earl Noss's article are from this printing
- No. 165: 1929 reprint from the re-engraved die on unwatermarked paper
- No. 174: 1931 reprint from the re-engraved die on watermarked paper

The re-entry Leopold referred to is illustrated in Figure 1. Earl described it in his article as follows: “This is an unlisted re-entry that shows a clear doubling of the upper left 3 and surrounding numeral box.” As Leopold notes in his comment, the 2026 Trajan catalogue lists this re-entry, and states that its position is 83.



Figure 1 Prominent re-entry to the upper left 3 and numeral box. Position 83.

Earl also described the re-entry in Figure 2. His description: “This is the listed re-entry that shows a clear doubling of the upper right 3 and surrounding numeral box. Although many of the thin lines are part of the design, there is also some doubling in the [lower left].”

This re-entry is listed in Unitrade but not in Trajan. Its position is 80. This is the re-entry I unfortunately illustrated with Leopold's comment in issue No. 203 of the newsletter.



Figure 2. Re-entry showing doubling in the upper right and lower left parts of the stamp. Position 80.

Regarding Leopold's question about which plate the re-entries come from, John M. Walsh provides keys to the answer in his exhibit, *Newfoundland Plate Numbers 1897-1947*. The exhibit is available on the BNAPS website (<https://bnaps.org/ore/ExhibitDisplay.php?Ex=2&Id=73>). (see Figures 3 & 4 next pages)

Pages 11 and 12 of frame 1 show blocks of the 3¢ with the plate number engraved in the sheet margin. On plate 2, the plate number is engraved in the lower left sheet corner, and on plate 3, the upper right. Page 11 shows blocks from plates 2 and 3 from the 1929 reprint from the re-engraved die on unwatermarked paper. Page 12 shows a block from plate 3 from the 1931 reprint on watermarked paper. Presumably, plate 1 was used for the 1928 printing from the original die. Since the re-entries Earl described come from the original die, they must come plate 1, not 2 or 3.

Finally, there is some confusion about the listing of the plates in the Trajan and Unitrade catalogues. They both list plates 2 and 3 as existing on the original 1928 printing as well as the 1929 reprint and plate 3 on the 1931 reprint. Since plates 2 and 3 are from the re-engraved die, they certainly weren't used for the original 1928 printing.

Editor's Note: I wish to acknowledge and thank Leopold Beaudet for his understanding, and for his help in putting together this rewrite.

Figures 3 & 4 Newfoundland Plate Numbers 1897-1947
John M. Walsh

This exhibit is a comprehensive study of Newfoundland postage stamps whose printing plates have a plate number engraved on the outer edge of the plate. It contains discoveries resulting from the exhibitor's original research. The exhibit won Gold at BNAPEX 2000 Shaumburg, IL.

PUBLICITY ISSUE OF 1929

The 3¢ value is other stamp in this issue found with plates; numbers 2 and 3.

Plate number 2 is found located in the lower left sheet corner.

Plate number 3 is found located in the upper right sheet corner.



13.8 x 13.8



13.8 x 13.5



13.8 x 13.8



13.5 x 13.8

*horizontal imperforated
bottom sheet margin error*

*this error showing the
plate number is not
recorded in the literature*



13.8 x 13.8

PUBLICITY ISSUE OF 1931

Again John Dickinson & Co., London was the printer. The stamp subjects are the same. However, the issue is different from the previous issue in that the stamp paper now has embedded into itself a watermark feature consisting of the Coat of Arms of the Newfoundland government. This was done to give more heightened security from unauthorized uses.

Both the 2¢ and 3¢ values are found with plate numbers.

3¢ value is found
with plate 3 located
in the upper right
sheet corner



perforation 13.8 x 13.8 is found on both values

From Jim André: I continue to study the 3c Queen Victoria from the Second Cents issue (Unitrade #33, 34, and 39) and am specifically looking at the re-entries on the plate. I would like to request high-resolution scans (600 dpi or greater please, 1200 dpi preferred) of any of the major re-entries found at plate positions 5, 45, 53, and 55, but only on the vermilion and blue perforated copies of the issue (Unitrade #33 & 34). Images of each are shown below and plate position 55 is especially notable and of interest.

The Library and Archives Canada has two plate proof sheets, a trial color in green and a vermilion sheet. The vermilion sheet exhibits the major re-entries but the green sheet does not, thus the plate was re-entered between the pulling of the green and the vermilion sheets. I'm trying to ascertain when the plate was re-entered, and it may have been re-entered more than once.

You may forward high-resolution scans of the 3c vermilion and blue perforated stamps with the major re-entries to me at kallai@charter.net. Credit will be given for any future use of images provided. Thank you very much in advance for your assistance!



Plate position 55



Plate position 45



Plate position 53



Remembering C.A. Stillions

by Brian Damien



There has not been a lot of overlap in membership between the Newfoundland Study Group of BNAPS and the PMCC – the Post Mark Collectors Club (<https://postmarks.org>).

In fact, I think the two groups have had in common just two members: C. A. Stillions, and myself. Unfortunately, I never had the opportunity to meet C. A., but I thought my fellow Newfoundland Study group members might be interested to know about C.A.'s involvement in PMCC.

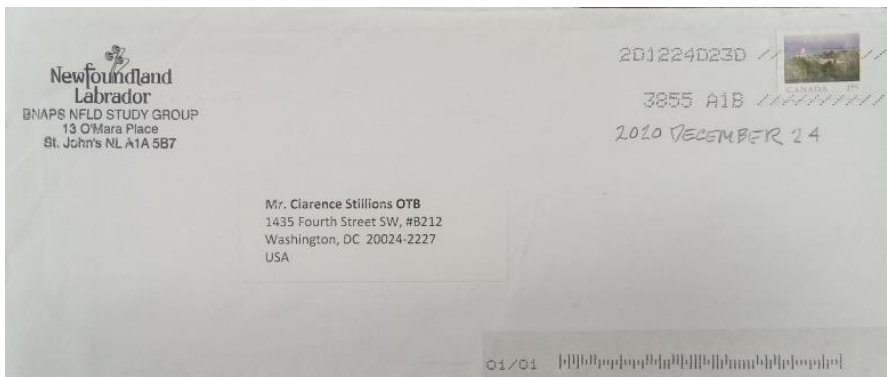
I'm writing this from the site of a regular event of PMCC, one of the semi-annual Work Weeks that take place at the National Postmark Museum that the Club maintains in a modern steel building on the edge of the campus of Old Lyme Village, a living history museum in Bellevue, Ohio.

I was reminded of C.A.'s involvement in both groups when I visited the museum for the first time in October 2025, when the club's annual convention happened here. While being given a tour of the museum by the Curator, Kelvin Kindahl, I took a quick look to see what the museum owned for Newfoundland material. The primary focus of the museum is on covers from the U. S. postal system; however, there is a small, well-organized, and growing collection of Canadian material, carefully grown and maintained by C. A. when he was here during the semi-annual Work Weeks when members converge on the Museum to work through donations and update the filing of new accessions. C. A. is shown working at this at a museum Work Week in 2012 in the snapshot above. The very first cover I saw when I opened the drawer is this, shown below, addressed to C. A. and with a very familiar return address in St. Johns. It is a small world!

C. A.'s membership in PMCC began in February 2005 and spanned the years until his passing. He was active up until the weeks before his death. An article he wrote shortly before his death was published in the PMCC Bulletin in December 2024. The article illustrates two covers with "tombstone" postmarks from Montreal (1848) and Halifax (1952).

In addition to Newfoundland, his collecting interests relevant to PMCC included the postmarks and postal history of Washington, D. C., where he lived and worked as an architect and structural engineer for the Office of the Architect of the Capitol.

C. A. is remembered by PMCC members for his dedication to upgrading the Museum's Canadian collection, and his intense focus on the tasks he had undertaken during Work Weeks at the Museum. The top photo shows C. A. surrounded by stacks of donated material, awaiting processing. This is a typical scene at the Museum's Work Weeks, which are usually scheduled in the spring and fall.



Remembering C.A. Stillions

- continued



A bit of Newfoundland postal history, organized by C. A., lives surrounded by the cornfields in Bellevue, Ohio.



Museum Curator Kelvin Kindahl stands by the Canadian collection which was a special focus of C. A.'s work at the Museum.

We don't have a lot of photographs of C. A. He was a regular at the club's Work Weeks, but less frequently seen at the annual conventions, when more photos are taken. He's shown here, in the right center of the picture,

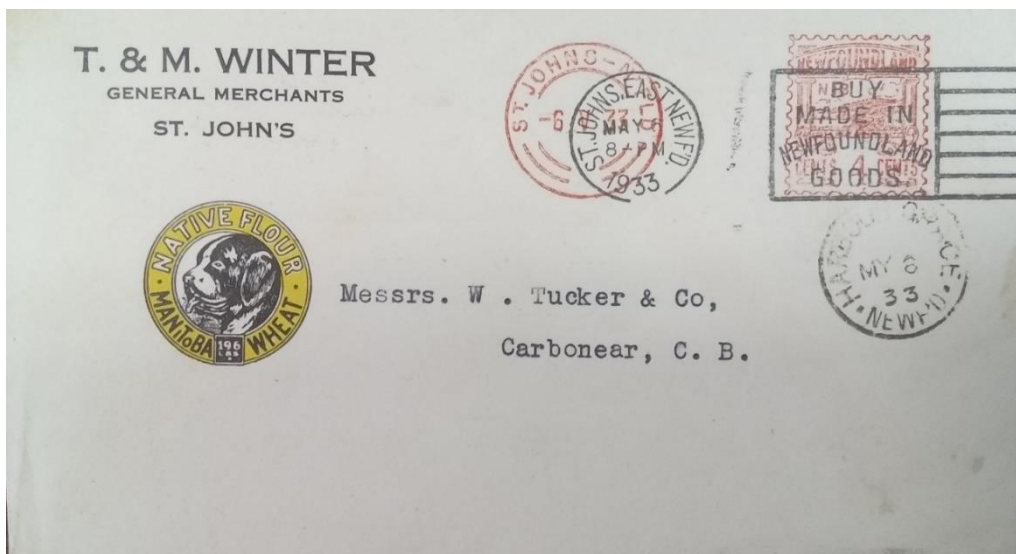
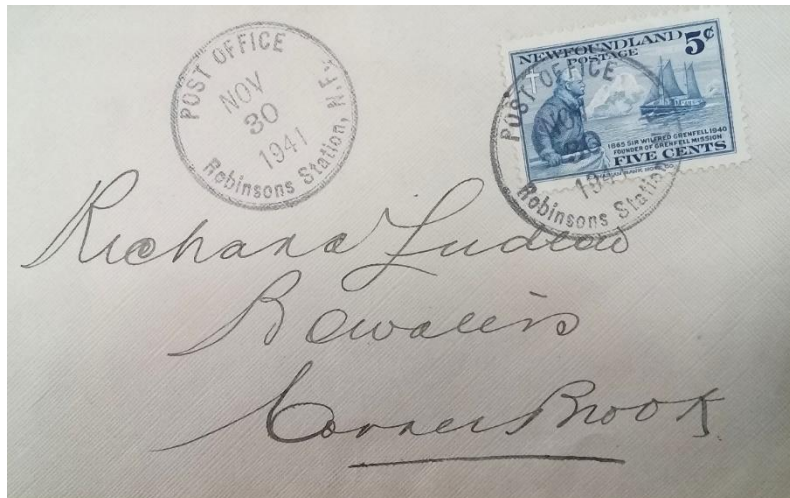
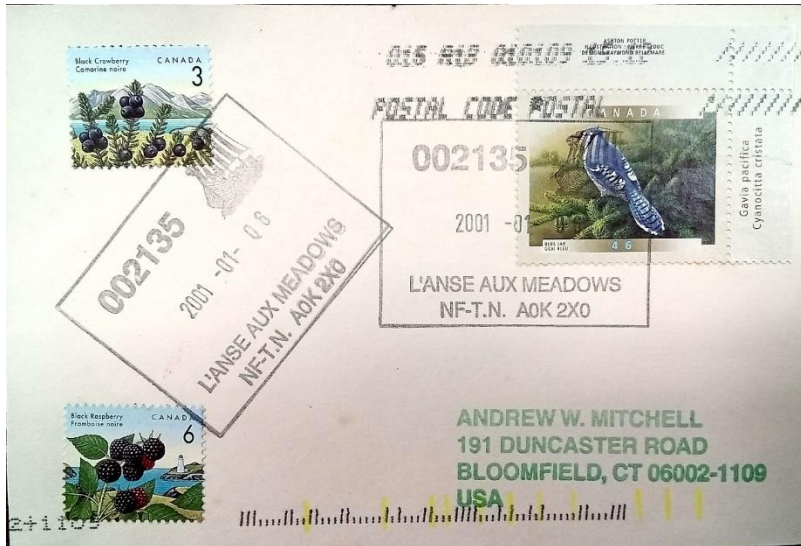


from part of a group photo of 55 members from the 2012 PMCC convention in Branson, Missouri.

Remembering C.A. Stillions

- conclusion

A few typical items from the collection:



AUCTION ANNOUNCEMENT

THE CAMELLIA PLC COLLECTIONS
Pence to KGVI including Airmails
June 20, 2026: Newfoundland Part I



Eastern Auctions Ltd.

P.O. Box 250 - Bathurst - New Brunswick - E2A 3Z2 - Canada

Tel: 1(506) 548-8986 / Fax: 1(506) 546-6627

Toll Free Tel: 1(800) 667-8267 / Fax: 1(888) 867-8267

Email: contact@easternauctions.com / Website: www.easternauctions.com

PAID ADVERTISEMENT