



BNAPS NEWFOUNDLAND STUDY GROUP NEWS

Edition #12 – November 15, 2023



Chairman & Editor: Malcolm Back, 97 Stuart Street, Stouffville, ON, L4A 4S4 mback1217@rogers.com
Treasurer/Circulation: Martin Goebel, 13 O'Mara Place, St. John's NL, A1A 5B7, goebel@nf.sympatico.ca

Page 1

From Malcolm Back, Study Group Chairman and Editor

We have had to change the date for our next **ZOOM** session. It is now scheduled for **November 18 at 12:00 noon EST.**

Klaus Wehlt will present on the “Transatlantic Mail To and From Newfoundland until 1870”

We could use another presenter, and as always will accommodate other member's contributions.

Here is the invitation to the Nov. 18 meeting.

Topic: Newfoundland Study Group

Time: Nov 18, 2023 12:00 PM Eastern Time (US and Canada)

January Newsletter; I am in need of submissions for the January Newsletter. Any submissions, long or short, would be appreciated.

From Mike Street, Kanata, Ontario; Ladies and Gentlemen, BNA Topics needs your help. The disruptions caused by Covid affected many different areas of our lives. In the case of BNA Topics, this has meant a major slowdown in the number of articles – short, long and in-between – received for publication. The Editorial Team has been plugging along, using up articles in the backlog, but the list of articles on hand has grown very short.

If you have been thinking about preparing an article (or two) on one or more of your collecting subjects, please stop thinking and start writing!

If you haven't been thinking about preparing an article (or two) on one or more of your collecting subjects, please start thinking about it/them and start writing!

All submissions are welcome. Please send them by email to the Editor, Bill Wilson
<wjfwilso@ucalgary.ca>.

This email is being sent to 53 elected and appointed Officers of BNAPS, Chairmen of Regional and Study Groups, and Editors of SG Newsletters. If you know of a member in your Study Group or Regional Group who might be able to help, please pass it along to them.

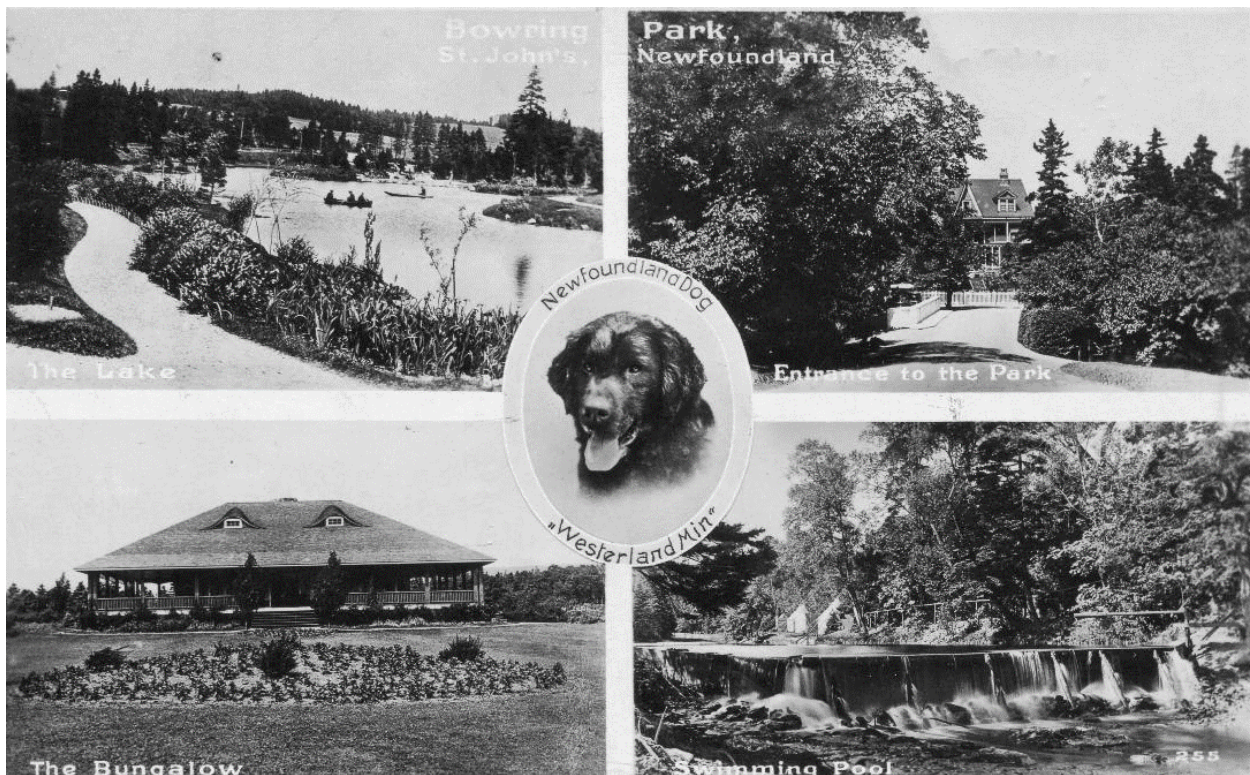
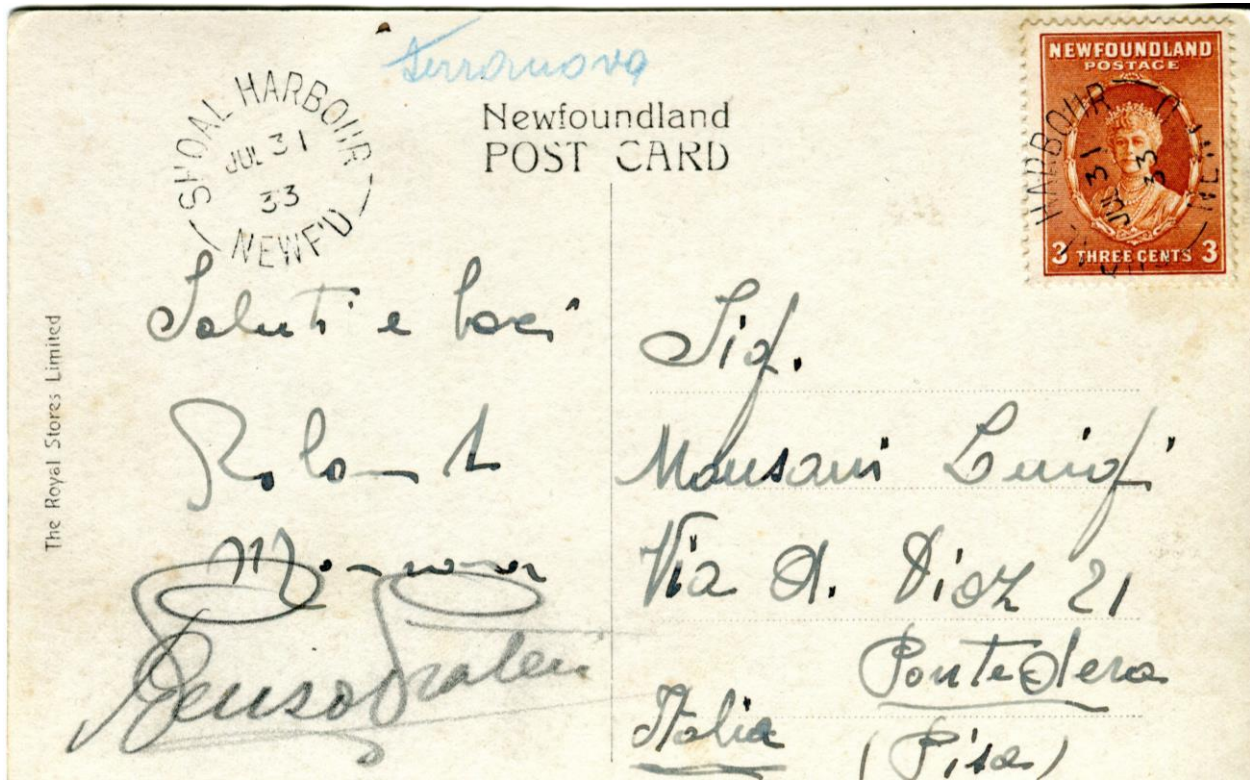
Thanks everyone.

Mike Street

Kanata, Ontario, Canada

mikestreet1@gmail.com

From Gareth Williams, Bloxham, UK; I'm hoping that in your next newsletter or bulletin, you could include the attached scan of a postcard sent from Shoal Harbor in 1933. The front is a multi-view of Bowring Park with no markings. I am assuming that it was from one of the Balbo crew and wondering if any of your readers could shed any light? In particular, who was it from and is there a possibility that it was flown?



From Leopold Beudet, BNAPS Website leopold.beudet35@gmail.com: You may wish to note in the Newfoundland SG newsletter or bulletin that J-Claude Michaud's exhibit, *Newfoundland Royal Family 1897-1901*, was posted recently in the Online Resources & Exhibits area of the BNAPS website. This five-frame exhibit shows the evolution of the stamps and their usage. It is organized in six sections: 1) die proofs, 2) plate proofs, 3) specimen overprints, 4) issued stamps including single usages, 5) multiple/mixed usages, and 6) E. R. Krippner Patriotic covers. The exhibit won Gold at BNAPEX 2023 Halifax. I have attached an image of the exhibit's title page.

Newfoundland

Royal Family 1897 - 1901

The Cabot issue was not intended to be a permanent one, and as soon as the issue had been delivered, the American Bank Note Company began preparing a regular issue consisting of 6 values portraying various members of the Royal Family. Beginning in December 1897 with the issues of the 1¢ red and 2¢ orange and, with the exception of the 3¢ orange re-issued for War Tax purposes in 1918, the last values issued were the 5¢ blue in June 1899 and the 4¢ violet in October 1901.

The Stamps:
 ½¢ Child Edward VIII - 1¢ Queen Victoria - 2¢ Edward VII - 3¢ Queen Alexandra - 4¢ Duchess of York - 5¢ Duke of York.
 All stamps were engraved and printed by the American Bank Note Co., New York in sheets of either 100 or 200 subjects, perforated 12 x 12, on un-watermarked paper. Diagrams of the various sheet layouts are shown throughout this exhibit.

Exhibit Plan:
 Frame 1 - Large and Small Die Proofs, Plate Proofs and 1/2¢ to 2¢ Specimen Overprints.
 Frame 2 - 3¢ to 5¢ Specimen Overprints and Regular Issues to 3¢.
 Frame 3 - Regular Issues 4¢ and 1/5¢ and Inland Multiple/Mixed Usages.
 Frame 4 - Inland, Canada, British Empire and United States Multiple/Mixed Usages.
 Frame 5 - United States and Foreign Multiple/Mixed Usages and E. R. Krippner Patriotic Covers.



E. R. Krippner hand-painted patriotic envelope showing all 6 values.
 St. John's 20 De 02 to Liverpool, England.

Bibliography:
 The Newfoundland's Royal Family Imperforates by Norris (Bob) Dyer, BNA Topics, Volume 60, number 2, April - June 2003.
 The Newfoundland Specialized Stamp Catalogue, 10th Edition, 2016 by John M Walsh and John G. Butt.
 The Postage Stamps and Postal History of Newfoundland, 1942 by Winthrop S. Boggs.
 The Encyclopaedia of British Empire Postage Stamps Vol. 5 Part IV (Newfoundland), 1973 by Robson Lowe.
 Krippner Covers - North America - Database Research Records by Peter Motson, Published by BNAPS, August 2019.
<https://www.library.mun.ca/cns/nlnews/>
[https://en.m.wikipedia.org/wiki/HMS_Rambler_\(1880\)](https://en.m.wikipedia.org/wiki/HMS_Rambler_(1880))
https://en.m.wikipedia.org/wiki/Red_Bay,_Newfoundland_and_Labrador

Exceedingly rare items are identified with a red dot ●