

# THE 1898 CHRISTMAS MAP STAMP NEWSLETTER

The Journal of the 1999 Map Stamp Study Group of the British North America Philatelic Society

President: Fred Fawn - 20 Palomino Crescent, Toronto, ON, M2K 1W1

Sec-Tres. & Asst. Editor - Roger Boisclair, 17 Rue de l'Orbite, Hull, Que, J9A 3C7

Editor: Dr. John T. Anders, P.O. Box 122, Stn. Main, Barrie, ON, L4M 4S9

Vol. 2 No. 4

December 2001

Whole # 7

## President's note

Our President can be reached by E-mail : [thefawnfamily@yahoo.com](mailto:thefawnfamily@yahoo.com)

This is about a singular exhibition that should inspire our Study Group. A seldom publicized and unique stamp exhibition is held in the principality of Monaco. It is a most unusual philatelic event in more than one way. Participation is only by the invitation of the Head of State, Prince Rainier III:

*«Le timbre-poste est un vecteur de l'identité d'un pays mais aussi un messenger des civilisations et des cultures.»*

S.A.S. le Prince Rainier III

(text of the official invitation )

Monsieur Ron Brigham a été officiellement invité à présenter une pièce d'exception au Musée des Timbres et des Monnaies de la Principauté de Monaco.

Translation made by R.B. A-Ed.: « ' Postage stamps not only represent an identity vector for a country, it is also a messenger of civilizations and cultures '. / Mr. Ron Brigham has been officially invited to present an exceptional item to the Stamp and Currency Museum for the Principality of Monaco. »

Only one philatelist per country is invited. At the most recent event, 38 countries participated. The lucky participants are allowed to show only one item: either a stamp or a cover.

Our member Ron Brigham had this rare privilege and exhibited the 2c Large Queen on laid paper. Of this stamp only two are known and Ron showed the finer example.

What has this got to do with the Map stamp? My question to members is, hypothetically, « **what Map stamp or cover would you exhibit under the same rules?** » You as Map enthusiasts have valuable input to contribute. This is an open challenge to all of you. Please do send your comments and articles to John Anders, our Editor.

## Secretary-Treasurer + Assistant-Editor's corner

by Roger Boisclair. I can be reached by email at: [roger.boisclair@sympatico.ca](mailto:roger.boisclair@sympatico.ca)

This is the seventh issue released since Bill Pekonen initiated this Study Group. From the beginning, a president, an editor and a secretary treasurer have been appointed to serve in the best interest of our small community. They form what we call our 'Management Board' (MB). Now, let us have a look at some simple statistics expressing the contribution submitted up to now to assemble our newsletter:

	From members	From the MB
Whole # 1	1	2
Whole # 2	0	2
Whole # 3	3	1
Whole # 4	5	5
Whole # 5	7	6
Whole # 6	3	6
Whole # 7	7	4



## Secretary-Treasurer & Assistant-Editor's corner, cont'd

It is a fact that although some valuable material has been submitted by the membership base, the majority of the core material has nevertheless been largely contributed by the MB. It is also true that there has been up and down in the participation until now. However, based on the above statistics and if my reading is correct, I see that there is a perceptible trend revealing a stronger involvement from the membership base. This is truly encouraging to us and we hope that all members will keep on providing material and feedback during year 2002, especially from the ones who are dealers who can hardly argue that they do not have material to show us. Without making it an advertising for their own business, I think nevertheless that the example provided by Bill Longley and Vance Carmichael are without any doubt worth noticing of their sound judgement.

On the other side, it is unfortunate that three (3) members have been dropped for non payment of their annual subscription during the year. Only one of them mentioned that our newsletter is not valuable for his collection. Some material is advanced, that's true but a large percentage of it is also affordable to all. Of the two other members dropped, one is a dealer who has never demonstrated any interest anyway. But we are sadly missing the other one, Mr. Francis Au, who unfortunately has not responded to our multiple recalls. As a result, we now have only a yearly 8% membership growth with a total of 27 members compared to 25 at the end of year 2000.

A quick word about the material submitted. When submitting an article, please note that I can read Wordperfect from the Corel Suite, WordPro from the IBM-Lotus Suite as well as Word from the Microsoft Suite, which is my preferred one. Wherever possible a disk will be much appreciated so I can avoid retyping the whole text and save time. However, if you do not possess such means, I will read with pleasure any hand-written articles provided that you deliver your best effort.

On another front, **please note that any material submitted is always returned to the author.** I am doing my best to achieve the most interesting newsletter. Worth noticing is the fact that we print original coloured pages when deemed necessary to improve the quality of the visual aspects shown. On this particular item, please keep in mind that the quality of the visual output of this newsletter is never better than the original submitted. You would express a solid support to the quality signature of this newsletter by paying great attention to the quality of the material attached to your article. On this aspect, all authors can easily evaluate by themselves how what they submit will eventually turn out. Sometimes I am forced to solicit pictures or photocopies of a better quality, which is the most tenuous task for me. Afterall, it is to the greatest author's advantage that I can handle articles in a fashion where the maximum credit is given to their author. Ultimately, I am sometimes forced to use my own material to support the lack of visual material offered. In order to raise the highest possible visual attractiveness, I hereby solicit your trust that I will return your original material, even if it is real stamps or covers. If you do so, you won't regret as the result will certainly impact more positively on your article. I also beg you to avoid being afraid that I will steal it or that it can be lost in the mail. Of course, everything can happen but on my side, I can assure you that I will use the necessary mailing services to promptly and safely return your material. You have my word on this. Some of you experienced my services on that particular aspect this year and I don't think that they regret as it represent a truly win-win situation where we can take pride on both sides in the product that we deliver to our members.

At the beginning of this year I personally made the decision to print original prints instead of having to pay for outsourcing copies. My primary driver was of course to address the visual quality, which I consider as being very important. My second reason was a financial one. In fact, I think that the product that you have seen this year is a vivid demonstration that my approach is the right one since our finances are in better shape than last year. Thanks also to the BNAPS year 2000 contribution.

I hope that members will be indulgent with the reading of this message and I want to reassure you that it will occur only once a year. As usually expected from a secretary-treasurer, I will provide an updated membership list as at December 31st. 2001 as well as a final financial statement for year 2001 within next year 2002 first issue. On behalf of our Editor Dr. John T. Anders and our President Fred Fawn as well as myself, I wish to offer the season's greeting from all of us. Dear colleagues, keep on stamping with the most interesting stamp!

**This is the first call for the annual subscription for year 2002. Payment must be made at the name of Roger Boisclair, Secretary-Treasurer, 17 De l'Orbite Street, Hull, Québec, Canada. J9A 3C7**



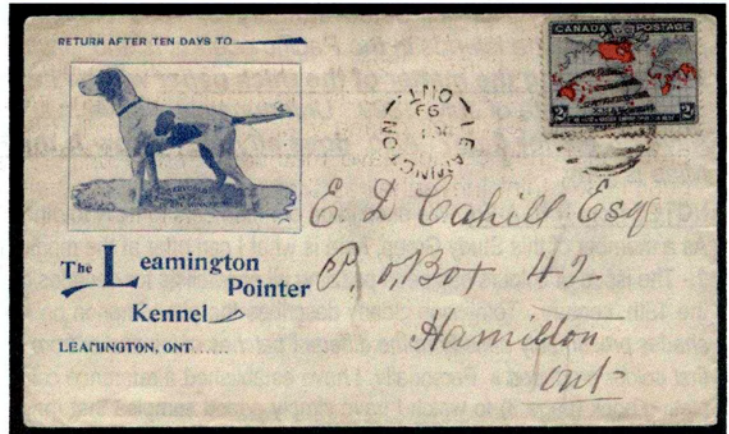
## WHAT MEMBERS HAVE TO SAY ?

- **Bill Longley (# 13).**

**How about a thematic with the Maps?** This time, Bill reports the attached cover with the following note:

« Nothing special, just a pretty advertising cover. Quite unusual to see a 'dog' advertising cover, especially this early! And most especially because it is a speciality breed related cover. »

Note: Thanks for the suggestion as well as for the quality of the image that was scanned with a jpeg extension and sent by email. It is certainly another way to keep growing the interest with our preferred stamp. R.B. A-Ed.



- **John P. Wynns (# 27) :** « Thanks for your note in the Newsletter. I enjoyed my visit to Ottawa and Hull, also meeting with you and the other members of our Study Group in attendance. Hope to see you and other members of our Study Group again before CAPEX 2004! »
- **Harry Sutherland** is one of our great honorary members. He dropped the following interesting note: « Thank you very much for your letting sending me Volume 2 No. 3 of the 1898 Christmas Map Stamp Study Group newsletter. **With reference to the story on page 50, you might be interested in the following addition:** the stamps in question were on the back of a piece of cardboard which was used to block up a cellar window at Sir William Mulock's home in Toronto. He was, of course, the Postmaster General under whose administration the stamps were issued. »
- **Dr. Jim Watt (# 22) :** What a nice surprise with Dr. Watt who now steps in with the following two letters:

**1. First letter about the Maps paper thickness:** « Unfortunately, I do not claim expertise in the 1898 Map issue. I rather regard my knowledge level as novice to intermediate in this issue. My primary of expertise is much earlier. **One of the things I would like to see from the members however, is a study regarding the Map stamp on thick paper and approximately when it occurred.**

You may find this titbit of information somewhat helpful: the one cent numeral on thick paper in green seems to have come out at about April or May 1900 and was abundant around the town of Prescott, Ontario at this time. The paper was rapidly utilised and seems to disappear even by June, 1900. What is the status of the two-cent Map stamp on thick paper?

As an aside, I would like to purchase a lower left block including the major re-entry in very fine to extra-fine condition preferably mint, lightly hinged, in a block. I would also like to obtain a second block in lower left from the unre-entered state. Should any members consider selling their collection, please have them contact myself at 700 Main St. E., Hamilton, ON L8M 1K7. »

Notes: a) The paper thickness is certainly a nice area to investigate. Thanks for the suggestion! For those who may need help, I have a paper micrometer instrument that can measure up to 5/1000 of a millimetre. I purchased it years ago from SAFE Co., Department of measuring instruments, Germany. To those interested, please do not hesitate to contact me for assistance. b) With respect to this request, it is assumed that Dr. Watt refers to Plate 5. Of course, all members are actively solicited to report any finding for Plate 5 State 1 for which I'll be more than happy to assist with zoom-in enlargements if you require it. R.B. A-Ed.

**2. Second letter about the Map Stamp shades:** « I would like response from the Map Stamp Study Group or someone more knowledgeable than myself regarding shades. Classically, Tomlinson indicated that lavender was Plate 2. Since I primarily collect used, lavender is very rarely seen in used and more likely they are somewhat changed to the colour of grey. In any case, my earliest date was a lavender/greyish colour dated December 7, 1898 (See report on an early usage of the Map Stamp in Vol.2, No. 1, Whole No. 4, page 35. R.B. A-Ed.). **I am wondering what date is the earliest date for turquoise oceans?** Generally speaking, dark blue oceans of Plate 5 probably came about on or about September, 1899. I have seen a copy (not owned by myself) dated January 12, 1899 with very clearly turquoise oceans. While I have not yet plated it, there is a dot above Sudan which is also



cancelled with an RPO dated St. Mary's and London, Ontario, January 12, 1899. **Is it the earliest recorded date for turquoise oceans?** There is another copy dated Morris St., Halifax, presumably used by Henry Heckler dated January 3, 1899 also with turquoise oceans. This one is readily platable by extra islands in the Pacific oceans Island Group. There is an extra island below island 1. Also **regarding the matter of the thick paper** which I have seen in gray oceans shade, I think I can establish a date of July, 1899. Unfortunately, I have misplaced this particular stamp. **Does anyone have an earlier date?** Also, **does anybody know if thick paper exists with turquoise oceans?** Mine is gray.

**NOTES from R.B. A-Ed.** We encourage our members to reply to others' request as much as possible and to let us know. As a member of this Study Group, here is what I can offer at the moment:

1.- The issue of colours has been puzzling all philatelists for decades on virtually all stamps, especially the earliest ones in the 19th. century. Tomlinson clearly describes the phenomenon on Maps when he says in page 7.. «*The many various shades presumably arise from the different batches of ink and/or from the attempts of the printers to satisfy criticism of the first colour produced.*» Personally, I have established a reference colour page based on the one provided in W. Bradley's plating book (page 3) to which I have simply added samples that may represent colour variations worth noticing and that can be found once in a while. Even if it is very difficult to deliver perfect exact colours, I plan to attach a copy of my collection page in a future issue (maybe the next one) for those to whom it may be of some help.

2.- Based on my experience with this stamp, the 'blunt' grey shade, i.e. the one without any trace of lavender, have been seen, even if less common than the lavender shade for plates 1, 2, 3 and 5.

3.- It is unfortunate that the original material has not been submitted. I encourage members to submit their original material wherever possible, especially when specific details can be identified only after examining the original material. For the moment, I can only speculate that the 'turquoise' colour would correspond to the usual Bright Blue Green, which, for instance, is the same naming of this particular colour as described by Tomlinson on page 7 of his book.

4.- Tomlinson (page 8) clearly identifies the lavender shade to be associated with all Plates 1, 2, 3, and 5. Personally, I am in the opinion that lavender shade existence is plentiful, except for Plate 5 where it is not common.

5.- Plate 5 was initially engraved on January 1st., 1899 - see Mr. Bradley's Map Stamp Study Group Newsletter Vol. 1, No. 5, Feb. 1984, Page 4. Tomlinson in page 8 of his book confirms that his earliest reported date for this Plate with oceans in lavender was at the time on March 27th. 1899. Personally, I can report a position 5-B-32 Major re-entry on cover (ex. Beverlie Clark) dated March 23, 1899 - figure attached. However, I remember



that some even earlier dates on used specimens of Plate 5 were previously reported namely for the beginning of March. I think it was in TOPICS but I'm not sure. Unfortunately, I cannot find the exact source at the moment but given Dr. Watt's report, I would recommend that it would be nice to show this January 12th. 1899 usage on Plate 5 in this newsletter. Surely it is worth a follow-up with enlargements clearly demonstrating the plating without any doubt.

- **Donald L. Krause ( # 10 ) :** In response to David Nicol's suggestion (see Whole No. 5, p. 42) for members to submit an introductory paragraph or two to let other members know more of the others, Donald agreed to contribute with the following.

« *I started collecting stamps when I was about 10 years old with a packet of 100 stamps that was given by my Aunt. My enthusiasm for stamps has waned throughout my life depending on events or circumstances. I won 'best of show' in 1948 for my one and only ever attempt at a philatelic exhibit to a local stamp club show. I still have the ribbons awarded. I retired from the U.S. Air Force in 1969 and throughout many distractions, my U.S. collection continued to grow until one day I realised that most of the blank spaces in the album were full, the remaining empty spaces being destined to remain that way forever due to budget restrictions. I needed somewhere to go and that is where Canada came into the picture. Soon most of the spaces again were full.*

*Then came plate varieties for both U.S. and Canada that I found challenging. Once the Pandora's box of plate varieties was opened, I soon found myself pouring over Mr. Tomlinson's and Mr. Bradley's books on the Map stamp. I cannot forget the day I received a letter from Mr. Richard Lamb wherein he advised me about the sadness of Mr. Bradley's passing.*



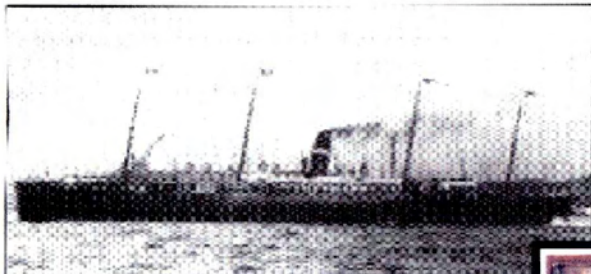
My most memorable visit to a major stamp show was when my wife and daughter gave me a trip to CAPEX in Toronto in 1987 as a birthday present where I met Hans Reiche, John Jamieson, Richard Lamb, Vance Carmichael to name a few. It made me feel somewhat like the Private in a room full of Generals. But I would do it again if given the chance.

During all this time, because of my location, I have always been at the mercy of dealers and auction houses via the postal system when trying to acquire Canadian material. Distance from Canada and budget restrictions limit the scope of what I am able to collect but presently, I am very attracted by Plate 5. I also want to say how much I appreciate the blow-ups and the illustrations of some of the more elusive plate varieties found on this stamp. I was especially delighted when I examined my two copies of position 1-A-12 and found the faint diagonal line through China reported by Mr. Au as illustrated on page 35 of the Newsletter. Unfortunately, I have no copy of position 1-A-54 to check for the variety illustrated by Dr. Jim Watt. » Note: Anybody can help Donald with his missing 1-A-54 position? It would be kind if someone would drop him a note. Don, please let us know if you are responded. R.B. A-Ed.

- **Joe Smith ( # 19 )** : « I have found an orb on Map TORONTO 3 ring dated DEC 9, 1898. TM is uncertain perhaps 3 PM. You can pass this info to Bill Pekonen who keeps track of it. »

## Map Wreck Covers with and without the stamp

By Fred Fawn. E-mail: thefawnfamily@Yahoo.com



The S.S. Labrador

Ken Lewis' article<sup>1</sup> in the Canadian Philatelist dealt with the unfortunate demise of the **S.S. Labrador**. For the Map stamp collectors this occurrence created an intriguing opportunity as several Map letters were recovered from the Atlantic.

In reply to the above article, I have submitted two Map wreck covers, one with and one without the Map stamp, together with a 'Letter to the Editor' who printed these in the Whole issue No. 307 for Nov-Dec 2001, p.285.

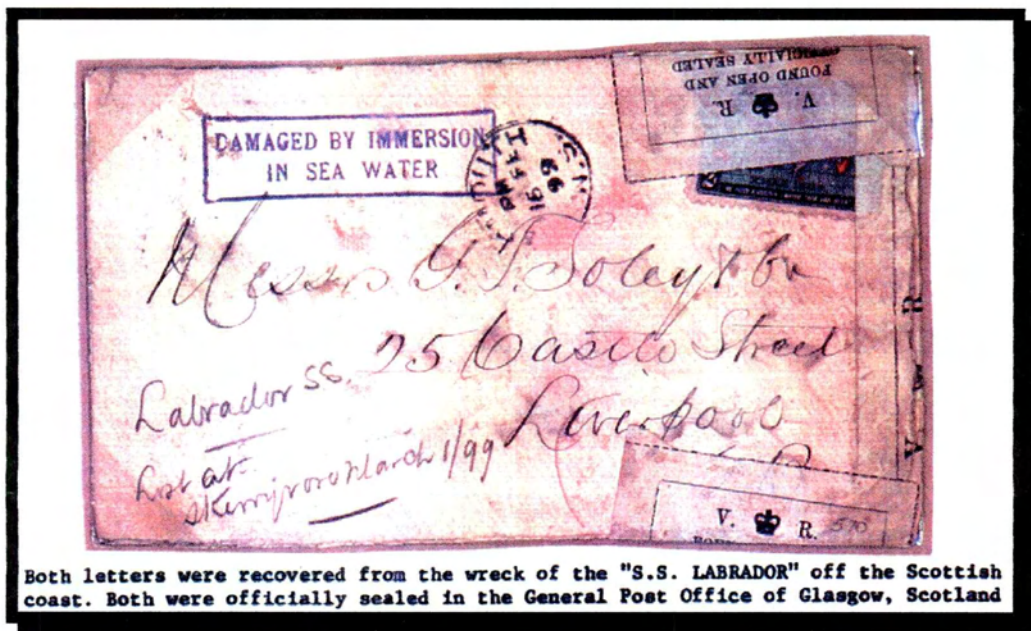


Only the 'ghost' of the Map stamp remains.

<sup>1</sup> Ken Lewis, Lost in the fog, Le philatéliste canadien/The Canadian Philatelist, Journal of the Royal Philatelic Society of Canada, Vol. 52, No. 4, Whole No. 305, July/August 2001, pages 150-153.



Since colour copies show much more vividly « the ghost of the Map stamp », this unusual item is herewith reproduced for the benefit of our members.



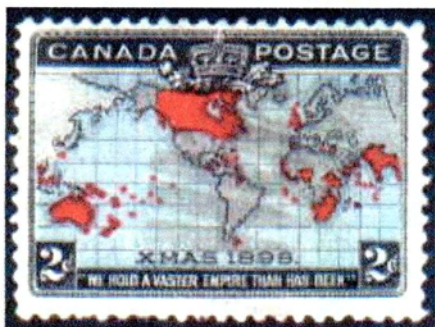
Both letters were recovered from the wreck of the "S.S. LABRADOR" off the Scottish coast. Both were officially sealed in the General Post Office of Glasgow, Scotland

**Note:**

For the information of the reader, please note that another very interesting article concerning the S.S. Labrador shipwreck was released by Colin Lewis recently.<sup>2</sup> R.B. A-Ed.

**Plate 5 State 1 before & after re-entry: two other positions reported**

by Harry Voss (# 21)



POS. 5-B 44, STATE 1 (UP) AND STATE 2 (DOWN)

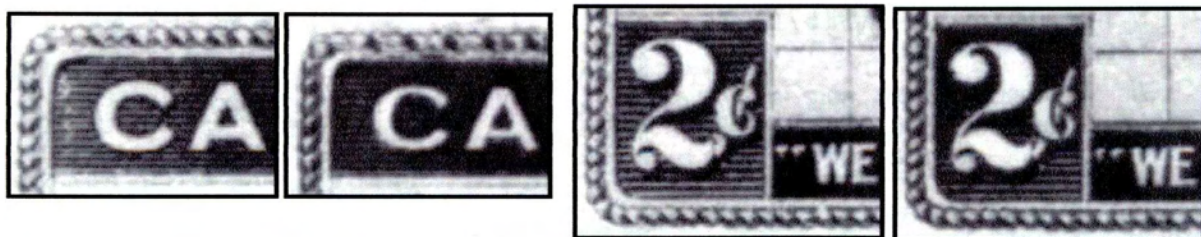
After many requests in the Map Stamp Newsletters for members to contribute an article, I will do what I can.

I was always more interested in varieties than the regular stamps. In 1964 I was sent to the NCR Service Tech School in Denver Co. While there I did visit a stamp shop in the West End of Denver, Penny Black Stamp Shop, no longer open. He showed me some re-entries that I was looking for and also a stock page with about fifteen Maps with missing islands. I did take the re-entries and all the Maps. I soon became hooked on the Map stamp when I began noticing the many re-entries in the stamp. Then along came Mr. Whitney Bradley with the Map Study Group. I quickly signed up. When his book was released «The Canadian Map of 1898 - A Plating Study» I could now plate the stamp. I now require one position to complete the 400, not counting the shades. Years later, I placed a bid on internet for a 300 Map stamps lot and won the bid. After a quick look through the lot, the one I required was not there. So I sorted out any stamps that looked like plate 5 as the black is usually slightly darker. I first plated the cds cancel, then the flag and finally the cork cancels.

<sup>2</sup> Colin Lewis, Wreck of the SS Labrador, BNATOPICS, Vol. 58, No. 2, Whole No. 487, April-June 2001, pp. 31-34.



While doing one stamp, the red printing placed it as **plate 5 position 44** but the black was totally different from the major re-entry position 44, with no doubling of the black printing. So I rechecked it with all positions in Mr. Bradley's Plating Book and with other plate 5 position 44s that I have. Low and behold, this must be an elusive Plate 5 State 1 before it was reworked. How to prove it? I reread Mr. W. Bradley's article in the original Map Stamp Study Group (whole # 21 - page 15) and also Mr. Roger Boisclair's great article in Newsletter # 5 pages 44-46 with enlargements of State 1 compared with State 2. These articles assured me that I had a State 1. Why not send it Mr. Roger Boisclair to confirm that I have a State 1? That he did and it came back as a State 1. (Figure 1)

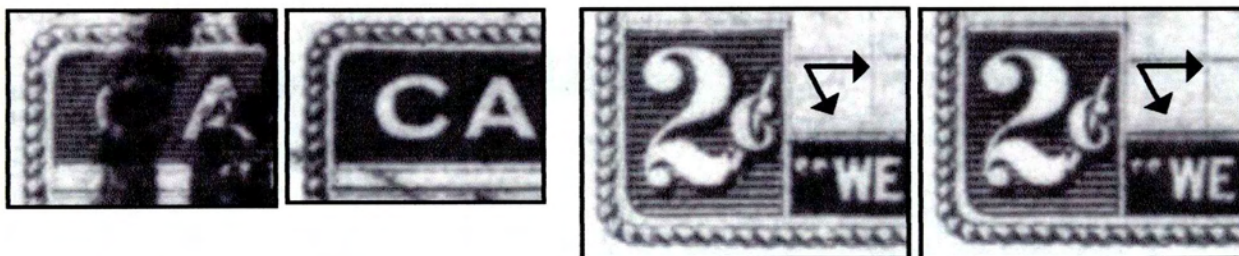


**Figure 1: State 1 on left, State 2 on right**

Now a month later I find another elusive State 1. This time it is **Plate 5 position 64**.



So the State 1 Map stamps are out there, even if it took about ten years of plating to find my first one and all of a sudden a month later I find a second one. (Figure 2)



**Figure 2: State 1 on left, State 2 on right**

**Conclusion:** Do you want something else to look for? **What a wonderful find it would be to identify a Plate 5 State 1 on cover!** I encourage members to search their material and to report their findings as well.

*Note: I'll be more than happy to help with enlargements and zoom-in if a member express a need in identifying or confirming a Plate 5-State 1 given specimen. R.B. A-Ed.*



# Canada / U S Dual Franking

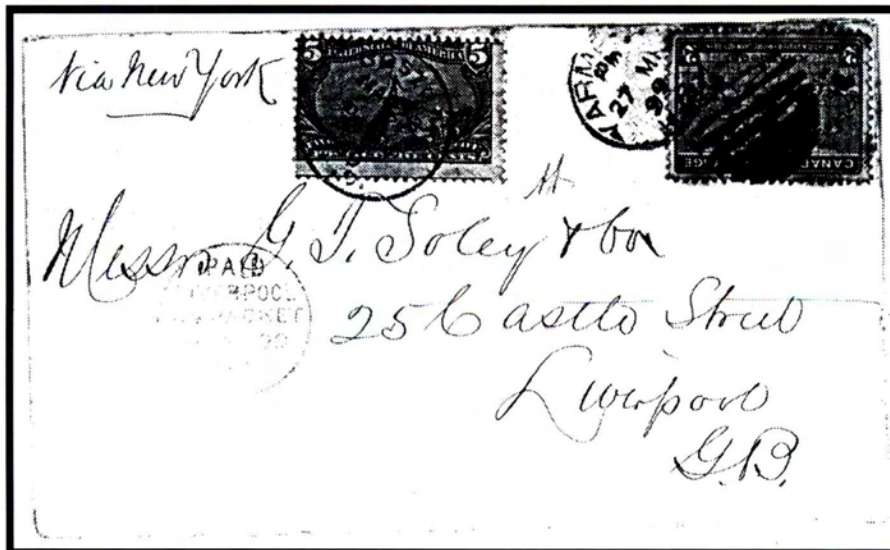
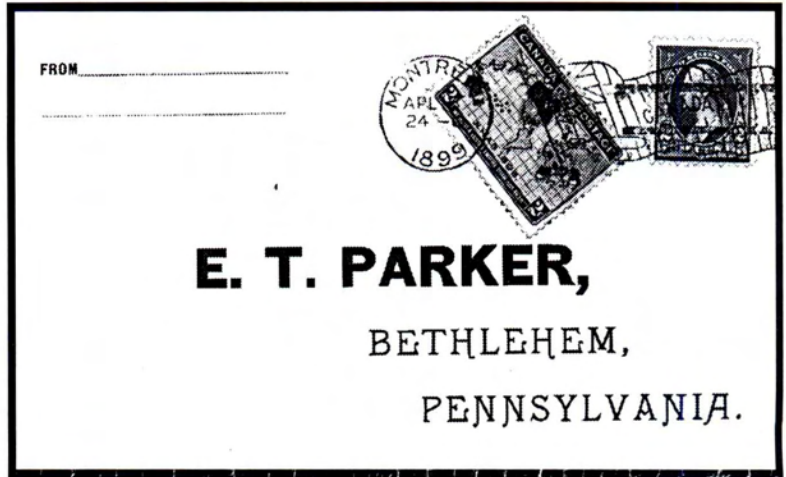
By Dr. John T. Anders (# 1)

There are covers where stamps of both countries are present and canceled. As a first example, here is a pre-stamped US return envelope sent to Canada and mailed in Canada with a 2 cent Map added for correct postage. Tied by Montreal Flag cancel - April 5 / 1899.

See figure 1 to right.

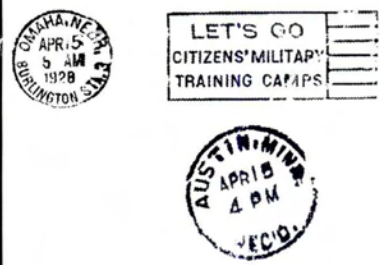
As a second example, here is a cover from Yarmouth NS to Liverpool GB via New - York with a 2 cent Map tied by Yarmouth cds - 27 MR / 99. Boston transit, where the 5 cent of the trans-Mississippi Exposition was added and tied by a Boston cds - MAR 28 / 99. Red Liverpool receiver - « Paid Liverpool US Packet 8 AP 99 »

See Figure 2 below.



Finally, here is a cover from Vancouver BC to Austin, Minnesota. This presents a conundrum. The rate to US was 2 cents/oz in 1928. Canadian Air Mail started in Sept. 1928. We have 8 cents Canadian in regular postage and 10 cents US in air mail charges. Vancouver AP 12 / 28 ties the Maps and the Air Mail on top right corner. Air Mail also has oval « Wash » cancel.

(See figure 3 below)



**Figure 3.**  
Question: Can anyone help solve the rate mystery?