

# THE 1898 CHRISTMAS MAP STAMP NEWSLETTER

The Journal of the 1999 Map Stamp Study Group - British North America Philatelic Society

President: Fred Fawn - 20 Palomino Crescent, Toronto, ON, M2K 1W1

Sec-Tres. & Asst. Editor - Roger Boisclair, 17 Rue de l'Orbite, Hull, Que., J9A 3C7

Editor: Dr. John T. Anders, P.O. Box 122, Stn. Main, Barrie, ON. L4M 4S9

Vol. 2 No. 1

February, 2001

Whole # 4

## President's note

*Fred Fawn can also be reached by E-mail: [thefawnfamily@yahoo.com](mailto:thefawnfamily@yahoo.com)*

Welcome to the second year of our Newsletter. It was gratifying to have the membership grow during the first year. Four issues are being planned for 2001 with even more content and a wider range of topics.

Well-deserved thanks go to Bill Pekonen, who edited the material for the first year. John Anders has offered his services to edit the Newsletter, in addition to his professional duties and philatelic interests. John is a great Map enthusiast. He was a contributor with two Map exhibits at ROYAL 98 Royale, venue for the official unveiling of the Centenary Map stamp.

Thanks to all contributors for articles received. Efforts will be made to bring them to you faster and in greater numbers.

Two friendly requests. Recruit new members, map collectors and anyone interested in philately. No collector should miss the enjoyment which the Map has to offer. Also, please send in any comment, articles long or one-liners, information on clubs, exhibitions, auctions and general interest to our membership.

## A word from your new Editor

*Dr. John T. Anders*

I was approached by our President, Fred Fawn, to act as editor of the Newsletter, and have accepted the position on an interim basis. It is my understanding that Bill Pekonen - editor of the first three newsletters - will remain as an active member of the study group and continue to contribute and share his knowledge and expertise.

The Map stamp aroused my interest in the late 60's for the simple reason that there were basically only two stamps involved, only one issue and it would be a simple project to study this stamp. What a surprise! After many years of accumulating material, and exhibiting at local shows, retirement allowed me to become more active in studying my material and relating it to available texts and literature. The interest continues to grow.

As editor I will involve the « kiss » principle to present material for all levels of interest in a simple and straightforward manner. Our aim is to have contributions from all members, be they in the form of articles, comments, requests, feedback, questions, suggestions, items of interest, etc. Let's make our Newsletter a real forum of discussion and learning.

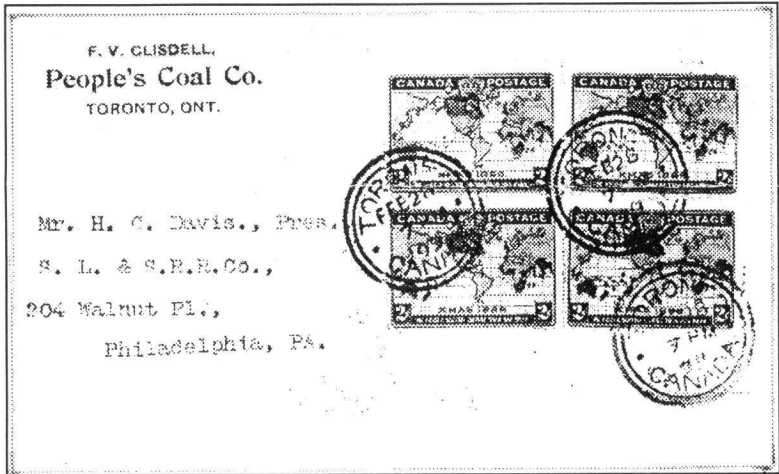
Roger Boisclair has been appointed as Asst. Editor and will take care of the newsletter set-up, layout and printing process. We intend to issue the Newsletter quarterly, but **to do this we need your input**. So, sharpen your pencils and fire up your computers and put all those great ideas on paper and send them to us.

At Roger's suggestion the word «Map» has been included in the title of the Newsletter. My preference would be to delete «Christmas». All members should provide feedback prior to next April 1st. Let me know how you feel!

# Multiple copies by Dr. John T. Anders

In spite of the Map stamp being designated as a regular issue by the Postal Authorities for the period from Dec 1898 to about the end of 1900, we seldom see covers or other examples of the use of this stamp in multiples or more than two. Is this just chance or is there a possible reason? Personally I think there are two reasons for this lack of

multiple usage: a) the Map was a single stamp issue of low value and b) the size of the stamp.

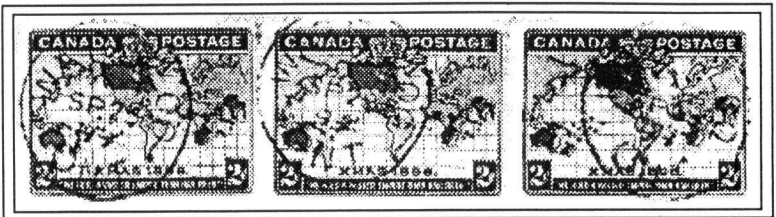


correct postal rate. The covers above and to the right are two examples of the multiple use of the Map on cover.

When stamps of later issues are used, in conjunction with the Map stamp, or when the Map stamp is used well past its issue period, although postally acceptable, the cover is usually considered by postal historians to be philatelically contrived. The cover below can be considered philatelically contrived.

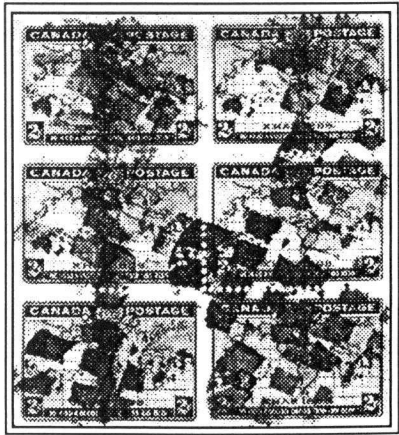
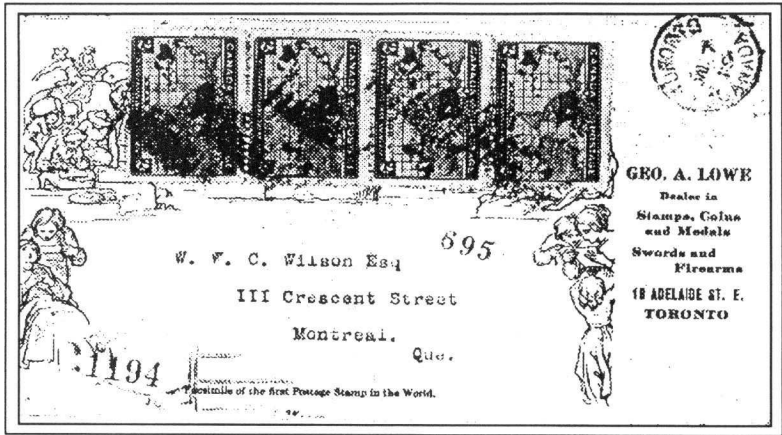
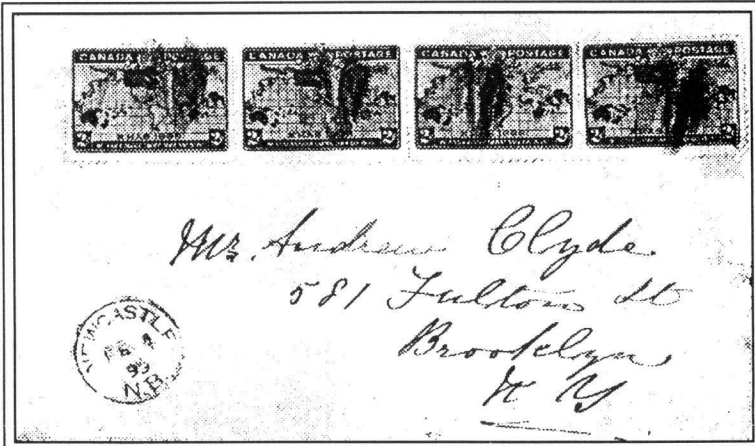
A few examples of multiple usage of the Map stamp off-cover are also provided.

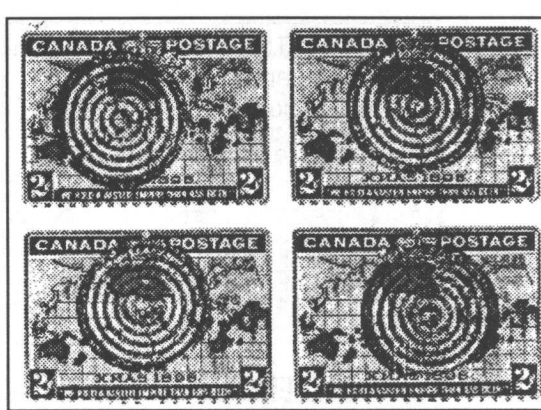
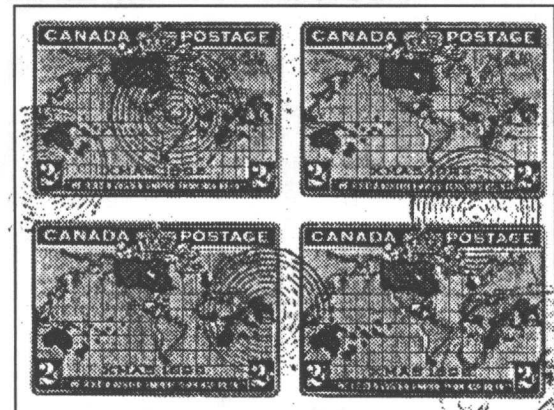
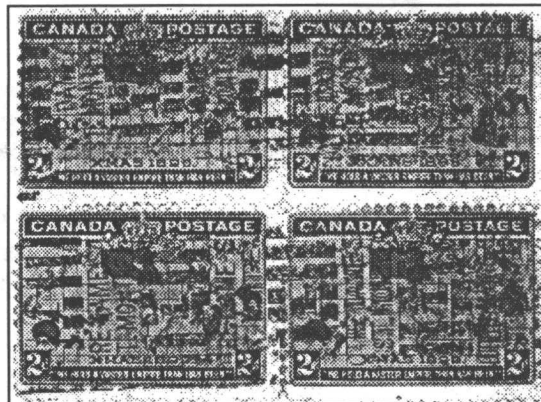
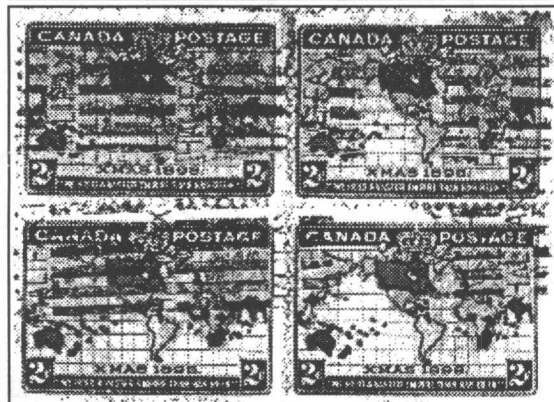
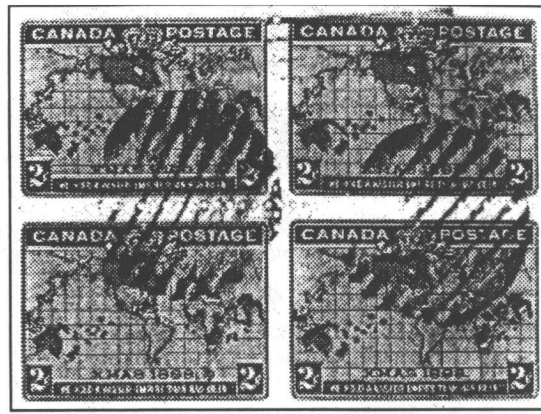
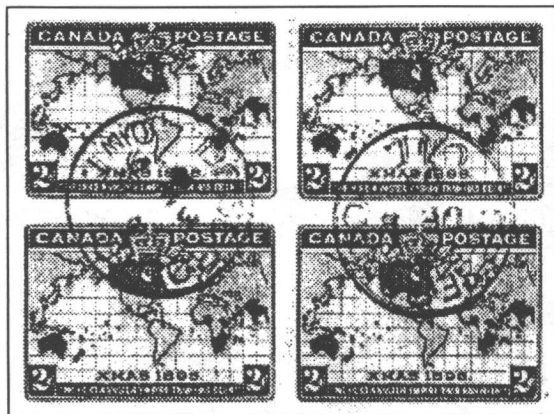
Note: All figures not to scale.



When larger amounts of postage were required - for registration, UPU rates, for double and triple rate postage, or other reasons - it would require several stamps of 2c value to achieve the rate. Most envelopes could not accommodate several Map stamps plus the other information required by postal regulations. The obvious solution was to use stamps of another issue with higher denominations.

The QV Numeral issue of 1898 was most commonly used in conjunction with postal rate. Less frequently we see the use of the QV Leaf issue or the Diamond Jubilee issue, plus the Map stamp, to achieve the





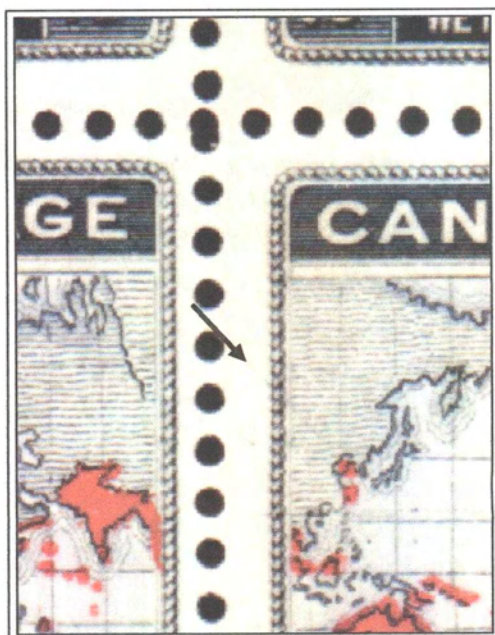
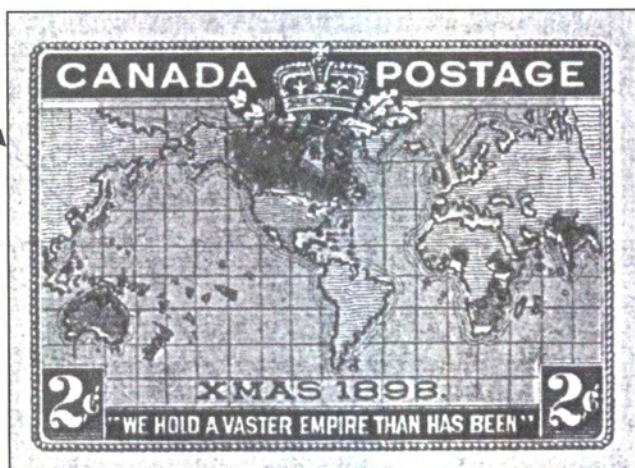
## Secretary-Treasurer's Year 2000 Annual Report by Roger.Boisclair@sympatico.ca

I found difficult to collect annual fees as well as all BNAPS membership numbers but I have finally succeeded. The Study Group membership breakdown is the following: 25 regular members and 2 honorary members. We must also send the Newsletter to 7 additional addresses which are needed to fill the complimentary list required by BNAPS authorities. We have released 3 newsletters during year 2000. Ron Brigham and Donald L. Krause have donated postage stamps. Newsletter #3 reproduction was free of charge. The annual financial report for year 2000 reveals that Bill Pekonen was right as we couldn't afford releasing 4 newsletters in year 2000. Financially, it will be tight but we will be able to do so in year 2001. Asst. Editor's comments will be offered in the next newsletter.

	Detail	Total	Notes & comments
Membership revenue	(24 x \$ 10) + (1 x \$15)	\$ 255.00	1 x Switzerland, 2 x USA.
Expenses			
Editing cost	\$ 15.00		Cost for printer's ink & paper
Mailing cost	\$ 81.60		Postage stamps
Reproduction cost	\$ 106.26		Colour + B&W photocopies
General correspondence cost	\$ 17.65		Between BP, FF, RB & members
Total		\$ 220.51	
Cash balance as at DE-31-2000		\$ 34.49	



Dr. Jim Watt reports a diagonal line variety through China to the Hawaiian Islands on the above striking first day usage of our preferred stamp. This rare **absolute gem** is from **Plate position 1-A-54**, see BNAPS Whitney L. Bradley's Book on plating - page 56. The enlargement on the right provides details of this constant black plate variety.



Again, our congratulations go to Francis Au who reports a similar diagonal line than above and also through China. It is also a constant black plate variety from position 1-A-12, which **was unreported until now**. It appears much lighter on stamps than on the plate proof. However, even if faint, it can still be fairly spotted, especially in the area in margin out of the stamp design for that particular position. *Note: the right enlargement is provided by the Asst. Editor.*



## Report on the London Stampshow 2000

By Fred Fawn

Every ten years the world's greatest philatelic show opens its doors in London. In 1990 the Alexandra Palace was the venue, this time the Earls Court Exhibition Halls.

Under the F.I.P. patronage, 3500 frames were shown along with a large selection of the Royal collection, as well as some of the British Museum's holdings. All classes of philately were displayed, the most prestigious of collections from around the world, to Youth and Open Class.

As expected, judging was very strenuous indeed, several previous gold-medal exhibits were reduced by one or even two levels. Many pages were absent from the frames and replaced by a stark printed sheet: "Removed by the jury for examination". Fakes, forgeries, faults and Certificates had a thorough examination. The critique was both individual and educational. The exhibitors who wished to receive a critique had to sign up and resultantly two or more judges of his category commented in front of his frame. This method not only benefited the exhibitor but also the many spectator students.

Eight Canada/BNA exhibits were counted, comprising Traditional, Postal History and Aerophilately classes. The exhibitors were 5 Canadians, 2 Englishmen and 1 American. In all the glitter of this great show, it was quite gratifying to see that the 8-frame MAP Stamp exhibit received the second highest award, 88 %, among the aforementioned eight entrants. Forget past comments heard on the Map Stamp, such as: "low-value, single-issue, low-price item".

It is hoped that this exposure at LONDON 2000 not only accorded the Map Stamp well-deserved recognition but also provide our Study Group a further incentive to research, collect, write and enjoy.

## WHAT MEMBERS HAVE TO SAY?

Along with payment of their annual subscription, **Roger Boisclair** reports the following feedback from members. This column will be used by the Editor & Asst.Ed. from now on for member's ramblings.

- **Donald L. Krauze** apologise for not being able to help with my last request for Feb/March 1899 cancels. On the other hand, he is seeking help for the following missing Plate 5 positions: 5-B-60, -70, -80, -83, -90, -93, -100. He is looking for mint stamps. Single is OK but he prefers in multiples. Particular plate positions, especially on Plate 5, the rarest one, is a challenge. At this time, I can help him only with a single stamp for position 93. Anybody can help Donald? He would certainly be happy to hear about other members. Please provide Donald with a description and condition for what you can offer.
- **Bill Longley** sent an e-mail to share the following opinion after Dr. Anders' article on Berlin cancels:  
*... "The discussion of the Dec 25 Berlin Mulready covers is certainly an intriguing mystery. I had the opportunity to stare this mystery in the face at a stamp show some years ago. While attending the Balpex show in Baltimore Maryland, I was quite excited to come across an enormous horde of Dec 25 1898 Berlin cancelled map stamps on unaddressed Mulready similtude covers. There were approximately 50 blue/green Mulreadys and an equal number of pink examples. Priced at \$30 each (US funds). I quickly showed them to **Allan Steinhart**, thinking I had stumbled into a fantastic find. Allan told me emphatically to put them back, they were fake. He told me they were back dated postmarks and while he did not say exactly when they were made, he made it clear they were less than contemporary. He had seen large piles of them as well. The covers remained there in that massive pile in a dealer's stock. Whether these covers are post-contemporary fakes or contemporary but back dated philatelic covers, the high prices these covers occasionally bring at auction (\$500+) is not, in my opinion, warranted. Dr. Anders is to be congratulated for tackling one of Canadian philately's mysteries and adding more information to the story. Potential buyers of such covers are now armed with additional information."*
- London 3 ring orb cancel. For years, I have been looking for a clear indicia # 23 with any date on the Map stamp. It is sadly missing for this particular cancel. Can I hear from anyone who can help? **Roger Boisclair**.

## **Orb Cancels on the Christmas Map Stamp: an open challenge!** By: Bill Pekonen

1987 to 1989 issues published by the BNAPS Map Stamp Study Group (Ed.Note: "Whole Numbers 14, 16, 17 & 20") included a series of articles about the Orb cancels. There was some interest because the stamp design was large enough to accommodate the larger than normal cancel imprint. The series resulted from a study conducted by Jim Felton, Little Rock, Arkansas. He had appealed for feedback, but apparently became discouraged when only a few people contributed information. Most collectors were not co-operating.

Consequently, the matter was dropped and not much has come to light since. Correspondence addressed to him asking for more information did not receive a reply. Felton developed a daily chart for the complete first two years 1899 and 1900 on which cancel dates could be recorded. The chart was for London, Ontario.\*

\* Notes from the Asst. Ed.: 1.- "as well as for Hamilton, ON"; 2.- In addition to the ones herein provided, a further two tables recording the day to day use of Toronto Station « B » and Toronto Station « C » 3 ring orb cancels will appear in the next whole Newsletter # 5.

# Orb Cancels on the Christmas Map Stamp

By: Bill Pekonen

Note from the Assistant-Editor : Data originally compiled by Jim Felton in 1987-1989 through the BNAPS Map Stamp Study Group Newsletter and hereby updated by Bill Pekonen as at beginning of year 2001. All figures are not to scale. They are provided only to help readers to see the subject type of cancel. Many sub-types may exist. Credit for figures granted to Maple Leaves, Journal of the Canadian Philatelic Society of Great Britain, and to the author of one of the earliest research on that cancel, Dr. W. Hollingsworth, F.C.P.S., VOL. 14, NO. 8, Whole Number 140, February 1973, Pages 207-214. Readers are hereby solicited to report their orb cancels and postal usage inventory on the 1898 Christmas Map Stamps to Bill Pekonen.

Cont'd.

Several other cities than London used the Orb cancel. The London chart has been modified. Separate charts for each of the other post offices have been developed to pick up from where Felton stopped work. The date cancel information compiled by Felton has been incorporated into the new charts and other information has been added from my collection. The new charts provide information only about the map stamps. No effort has been made to include time mark data, nor for other uses of the Orb cancel on other stamps.

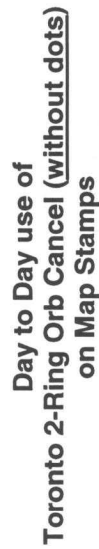
It is felt that the charts could form a watch list for other collectors. **Hopefully, the readers will go through their collection and check for any Orb cancels they may have either as used copies or still on the cover. This is the first open challenge to this Study Group and perhaps you can then send this author any new reports so that they can be recorded.** Each reader can then keep an up-to-date list of what is known.

Only one (1) cancel from Toronto Station C (1904\*) and two (2) cancels from Toronto Station B (1901\*) are known. Felton concluded, on the basis of the information he had gathered, that any Toronto Orb cancels from any post office in Toronto were very scarce. Only 14 strikes from Hamilton over a two year period have been recorded. London post marks are more common, but even then are not that easy to find. (\* noted by Asst-Ed.) Greater interest has been shown in the squared circles. Winmill created an extensive list of those cancels which are likely to show on the map stamp. The orbs are in the same category, but have attracted less interest – probably because they are not as easy to find as are the squared circles. **Indeed, Orb cancels on Maps appear to be scarcer than most Sq.c.c.!**

## NOTES

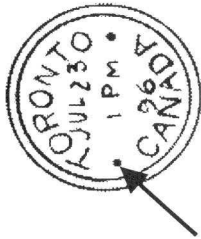
KEY: \* usage known on Map stamp this date

	'98	1899												1900											
		J	F	M	A	M	J	J	A	S	O	N	D	J	F	M	A	M	J	J	A	S	O	N	D
		A	E	R	P	Y	U	Y	U	Y	A	S	O <td>N</td> <td>D</td> <td>E</td> <td>A</td> <td>J<td>F<td>M<td>A</td><td>P<td>Y</td><td>U</td><td></td></td></td></td></td>	N	D	E	A	J <td>F<td>M<td>A</td><td>P<td>Y</td><td>U</td><td></td></td></td></td>	F <td>M<td>A</td><td>P<td>Y</td><td>U</td><td></td></td></td>	M <td>A</td> <td>P<td>Y</td><td>U</td><td></td></td>	A	P <td>Y</td> <td>U</td> <td></td>	Y	U	
		*	*		*																				
			*																						
		*	*																						
		*	*																						
		*	*																						
		*	*																						
		*	*																						
		*	*																						
		*	*																						
		*	*																						
		*	*																						
		*	*																						
		*	*																						
		*	*																						
		*	*																						
		*	*																						
		*	*																						
		*	*																						
		*	*																						
		*	*																						
		*	*																						
		*	*																						
		*	*																						
		*	*																						
		*	*																						
		*	*																						
		*	*																						
		*	*																						
		*	*																						
		*	*																						
		*	*																						
		*	*																						
		*	*																						
		*	*																						
		*	*																						
		*	*																						
		*	*																						
		*	*																						
		*	*																						
		*	*																						
		*	*																						
		*	*																						
		*	*																						
		*	*																						
		*	*																						
		*	*																						
		*	*																						
		*	*																						
		*	*																						
		*	*																						

[illegible]

**KEY:** \* usage known on Map stamp this date

## NOTES



Day to Day use of Toronto  
2-Ring Orb Cancel (with dots)  
on Map Stamps



Day to Day use of Toronto  
3-Ring Orb Cancel  
on Map Stamps

Note from the Assistant-Editor: Data originally compiled by Jim Felton in 1987-1989 through the BNAPS Map Stamp Study Group Newsletter and hereby updated by Bill Pekonen as at beginning of year 2001. All figures are not to scale. They are provided only to help users to see the subject type of cancel. Many sub-types exist. Except one, credit for figures belong to Maple Leaves, Journal of the Canadian Philatelic Society of Great Britain, and to the author of one of the earliest research on that cancel, Dr. W. Hollingsworth, F.C.P.S., VOL. 14, NO. 8, Whole Number 140, February 1973, Pages 207-214. Readers are hereby solicited to report their orb cancels and postal usage inventory on the 1898 Christmas Map Stamps to Bill Pekonen.

	1899												1900												
	J A	F E	M R	A P	M Y	J U	J U	A U	S P	O C	N O	D E	J A	F E	M R	A P	M Y	J U	J U	A U	S P	O C	N O	D E	
1																									
2																									
3	*																								
4																									
5																									
6																									
7																									
8		*																							
9																									
10						*																			
11																									
12											*														
13											*														
14																									
15																									
16											*			*											
17															*					*					
18																*									
19																									
20																									
21																									
22																									
23	*																						*		
24																									
25																									
26																									
27																									
28		*																							
29																			*						
30																		*							
31															*										

KEY: \* usage known on Map stamp this date

NOTES