

# THE 1898 CHRISTMAS STAMP NEWSLETTER

---

The Journal of the 1999 Map Stamp Study Group – British North America Philatelic Society

Chairman : Fred Fawn – 20 Palomino Crescent, Toronto, ON, M2K 1W1

Secretary Treasurer: Roger Boisclair, 17 Rue de l'Orbite, Hull, Qué., J9A 3C7

Editor: Bill Pekonen: 201 – 7300 Moffatt Road, Richmond, B.C. V6Y 1X8

---

Vol. 1 No. 3

November, 2000

Whole # 3

Here is the long awaited third edition of the Newsletter. At the outset, we anticipated that only three editions would be produced during the first year. This target was considered to be a realistic expectation of a start up study group.

To date, we have had negative comments such as « it looks like the newsletter is being produced for the benefit of those within the study group who display their own material ». And « the newsletter should come out more frequently. » While these statements may be true to a certain extent, it does not reflect the problem about other collectors not having contributed material for inclusion. The newsletter can only reproduce what the editor has received from other collectors. The purpose of this newsletter is simply a way to share information contributed by other collectors. If no material has been submitted, then there is nothing much to say. This is not my newsletter - it is yours. So, if you want to see it come out more frequently, then send more information that can be shared with the other collectors of this stamp. This editor simply does not have the time to make up stories simply to justify a mail out.

Here are some contributions sent in earlier. The last issue was quite lengthy simply because it was deemed important to keep the comments together instead of spreading the opinions over two or more issues, and suffer from losing the thread about the main ideas.

**The policy of this editor is to publish the submissions without censorship of ideas or opinions.** In some cases, such as below, certain comments may be added if they serve to explain some point not raised by the contributor. A second purpose would be to encourage reader comments who may have a different opinion or who may have different information/facts which might produce different results. So here are a few items which will provide some food for thought. Let's hear from you about different ideas.

## EARLY ADVERTISING COVER Coutesy of Ron Brigham

One of the finest Advertising covers was sold at a Robson-Lowe Ltd. auction in March 1975. It is dated Toronto, December 20, 1898. The astute collector will quickly recognise the addressee. The correspondence to Dr. Johnson in the 1890's is well preserved, including early dates on Map covers. The earliest date seen is December 2, 1898 on a Confederation Life cover.

*(Editor's note: does anyone have a copy of the train schedule between Ottawa and Toronto in effect in December, 1898 or know where a copy can be found? It would add an interesting addition to some other information on hand which can be reproduced in a future issue.)*



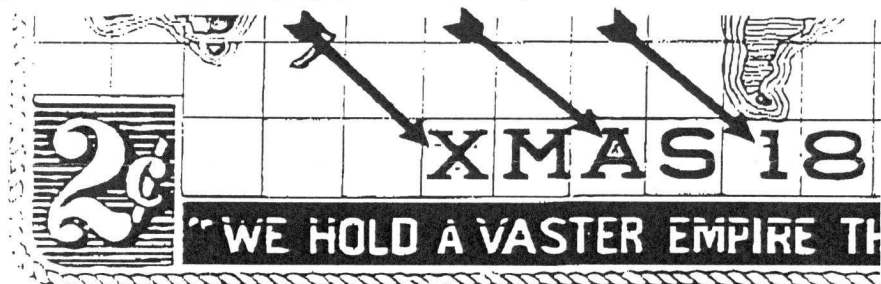
Early Advertising cover - Toronto De-20-98.

**Francis Au** sent in a copy of his album page which shows the detail of a Plate 2 black plate variety. In particular, he shows stamps 9 & 19. This is not a NEW random variety, but is constant with the stamp. It actually is a better description of these positions than is found in Bradley's book. These two stamps (actually three stamps including # 29) are described as a line through "WE HOLD....". In reality, the re-entry is not a single line through the phrase, but a series of three lines moving in tandem. It is not as noticeable in stamp # 29 because one of the horizontal lines within solid black banner, but you can see the extended line through the "2" in the value tablet. Note also the mark within the "A" of XMAS.

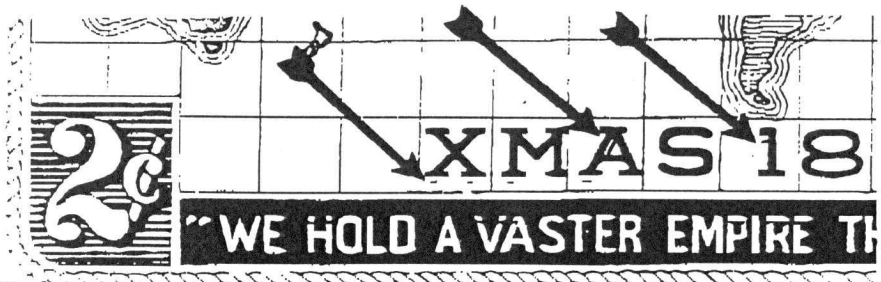
## Major Re-entry

Extra Lines in Letter 'A' of X'MAS

Stamp 9



Stamp 19



**J. T. Anders** has sent in some interesting information about the 'Mulready' covers canceled in Berlin, Ontario. The illustrations follow the text simply for simplicity in layout. The text has been retyped to fit this format, but only minor changes. Anders writes as follows:

As stated in the article by Hanes, Winmill and Winmill, these « imitation Mulready » covers (fig. 1) were:

- produced by the Peterborough Review and Publishing Co. Ltd. after copyrighting on Des. 3, 1898;
- fabricated in both Rose and Light Dull Green, the green colour being the scarcer. Size: 5.25 x 4.25 inches;
- made from cream coloured laid paper with Batonne lines 27 mm apart; the cover exists in relatively small numbers.

In his book on the postal history of the Map stamp, Winmill states that:

- most known copies are unaddressed and dated DE25/98 with a Berlin, Ont. cds. (See figure 2). It appears to be a philatelically oriented item which in the opinion of many is not even genuine and certainly not contemporary;

Consider further the facts that

- Peterboro has an addressed Mulready cover showing that date;
- genuine copies exist from Berlin at a later date;
- all genuine (Berlin) covers bear a duplex cancellation.

Accepting all the above as fact and knowing that postally correct usage of Mulready covers exists during the period of Dec. 21, 1898 and August 14, 1901 (see figures 1 and 4), our only doubt remains with the unaddressed Mulready covers which were canceled with a Berlin Ont. Dec. 25/98. The question arises - « Are these genuine philatelic items (when compared to present day, non-addressed, cacheted First Day covers) or were they prepared at a later date using a fake cancel?

Opinions have varied over the years.

The author has compared the cancellations on the Mulready covers to other cancellations in use by the Berlin postal authorities during the period from 1879 to 1916. (See figure 3). A comparison was also made with the dater of the duplex cancels of the period, since the date could have been separated from the obliterator and used alone (or the duplex portion appear off the stamp). Known and recorded Proof strikes of the period were also used for comparison.

Visual comparison of Mulready cover cancels and the cancels listed above shows obvious differences in the letters « B » and « n » of Berlin and the « O » of Ontario. This difference was noted in all the material examined except for three matching copies and was confirmed by acetate overlays.

The following Berlin Proof strikes were compared to the Mulready cover cancels and no exact match was noted: AU9/77, AUG20/78, DEC20/78, AP2/90, MY15/15. The closest match was AP2/90, but some discrepancies were observed. The procedure followed was by use of acetate overlays of the Mulready cover cancels on all of the above listed material.

Results to date:

Eleven single copies of the Map stamp with clear Berlin cancels (10 cds and 1 duplex) ranging from DE23/98 to OC21/99 were examined and compared. Of these, ten did not match the Mulready cover cancels, but one did. Unfortunately the matching one was only a partial copy with date missing.

Material from a Berlin Ont. Collection kindly loaned to the author showed that of the 48 covers selected with Berlin cds cancels, 46 did not match the Mulready covers cancels. Of the 2 matching copies, one was dated JAN19/00 and the other JA10/01. Of the latter, the Berlin cancel was a receiving mark and also had a "D" as an extra indice (figure 4).

From the material examined, it is evident that the cancel used on the Mulready covers was also used by the Berlin post office on other mail during the official period of the Map stamp use. It appears fairly certain that the cancel is genuine and that perhaps the covers were cancelled as a favour, BUT USING A RECEIVER CANCEL.

Research on the subject will be continued as new material becomes available. Comments or material from other collectors would be appreciated.

References:

Hanes, Winmill, Winmill – Maple Leaves Vol. 16, # 9, 1977  
R.B. Winmill – The Evolution of IPP and the Postal History of the Canadian 1898 Map Stamp, published by J.A. Hennok Ltd., Toronto. Ppg. 98, 102, 105  
Maresh – Auction sale 334, Oct. 1998, Item # 752  
Author's collection  
R. Vogel – personal communication.

Editor's Note: The illustrations which relate to the above article follow on the next pages.

=====

Our Secretary-Treasurer Roger Boisclair has the following to report for this issue:

BRITISH NORTH AMERICA PHILATELIC SOCIETY (BNAPS)				
THE 1898 CHRISTMAS (MAP) STAMP STUDY GROUP MEMBERSHIP LIST				
Name	BNA-#	Membership Address	Subs.yr.	E-Mail Address & Remarks
HONORARY MEMBERS				
SUTHERLAND, Harry	R-2161	Apt. 403, 616 Avenue Rd., Toronto, ON. M4V 2K8	2000	
ROWE, Kenneth	special	5280 Lakeshore Rd., Suite 502, Burlington, ON. L7L 5R1	2000	
REGULAR MEMBERS ( * PAID MEMBERSHIP AS AT DECEMBER 05, 2000. )				
1- ANDERS, Dr. John T. *	R-5445	16 Crestwood Drive, P.O. Box 122, Stn. Main, Barrie, ON. L4M 4S9	2000	
2- AU, Francis *	R-5754	832 W 59th. Ave., Vancouver, B.C. V6P 1X7	2000	
3- BOISCLAIR, Roger (Sec.) *	R-5248	17, Rue de l'Orbite, Hull, QC. J9A 3C7	2000	Roger.Boisclair@sympatico.ca
4- BRIGHAM, Ron R. *	application	1120 Brevik Place, Mississauga, ON. L4W 3Y5	2000 & 2001	Brigham@interlog.com
5- CAMPBELL, Neil *	application	6343 Lasalle Road, Nanaimo, B.C. V9V 1N6	2000	Neilcamp@nanaimo.ark.com
6- CARMICHAEL, Vance *	R-2921	P.O. Box 267, Smithville, ON. L0R 2A0	2000	Vance@netcom.ca
7- FAWN, Fred (Chairman) *	R-4187	20 Palomino Crescent, Toronto, ON. M2K 1W1	2000	Thefawnfamily@yahoo.com
8- FIRBY, Charles G. *	R-2264	6695 Highland Road # 101, Waterford, MI 48327, USA	2000	FirbyStamps@Prodigy.net
9- JAMIESON, John I. *	L-2395	P.O. Box 1870, Saskatoon, SK. S7K 3S2	2000	Ssc@saskatoonstamp.com
10- KRAUSE, Donald L. *	R-5264	4501 Bali Court, N.E., Albuquerque, NM 87111, USA	2000	
11- LAMB, Richard M. *	R-1255	P.O. Box 573, Kitchener, ON. N2G 4A2	2000	
12- LINGARD, Douglas *	R-3377	2425 Blackstone Crescent, Ottawa, ON. K1B 4H3	2000 & 2001	Lingardd@istar.ca
13- LONGLEY, Bill*	R-5118	P.O. Box 620, Waterdown, ON. L0R 2H0	2000 & 2001	Blongley@home.com
14- LYON, Gary J. *	R-2918	P.O. Box 450, Bathurst, NB. E2A 3Z4	2000 & 2001	Glstamps@ubnet.nb.ca
15- NICOL, David *	?	12523, 77A-Ave., Surrey, B.C. V3W 8P2	2000	Provide your membership # please
16- NIXON, J. Edward *	R-2223	255 Cortleigh Blvd., Toronto, ON. M5N 1P8	2000	Ted.nixon@ca.wmmercar.com
17- PEKONEN, Bill (Editor) *	R-2091	201-7300 Moffatt Road, Richmond, B.C. V6Y 1X8	2000	
18- REDDINGTON, Stuart D.	R-5452	53 Village Center Place, Suite 100, Mississauga, ON. L4Z 1V9	2000	UNPAID-TO BE DELETED JA-2001
19- SMITH, Joseph *	R-4461	Box 1143, Rocky Mountain House, Alberta T0M 1T0	2000	
20- TALMAN, John H. *	application	P.O. Box 70, Adelaide St. P.O., Toronto, ON. M5C 2H8	2000	Jtalman@interlog.com
21- VOSS, Harry *	R-3904	320 Whitney Ave. So., Saskatoon, SK. S7M 3K5	2000	Harryvoss@home.com
22- Watt, Dr. Jim *	L-3825	700 Main Street East, Hamilton, ON. L8M 1K7	2000	
23- Robert A. Lee*	L-2470	#203-1139 Sutherland Avenue, Kelowna, B.C. V1Y 5Y2	2000	Lee@silk.net
24- Eichele, Manfred*	R-5112	Merkurstrasse 44, CH-4123 Allschwil, Switzerland	2000 & 2001	
25- Trimble, Ralph E. *	R-3655	46 Eastwood Crescent, Markham, ON. L3P 5Z7	2000 & 2001	Retrimble@home.com

RECALL TO ALL

Now is the time to renew the annual subscription for year 2001. For those who have not yet followed their annual payment, please draw your check and send it to the Secretary-Treasurer.

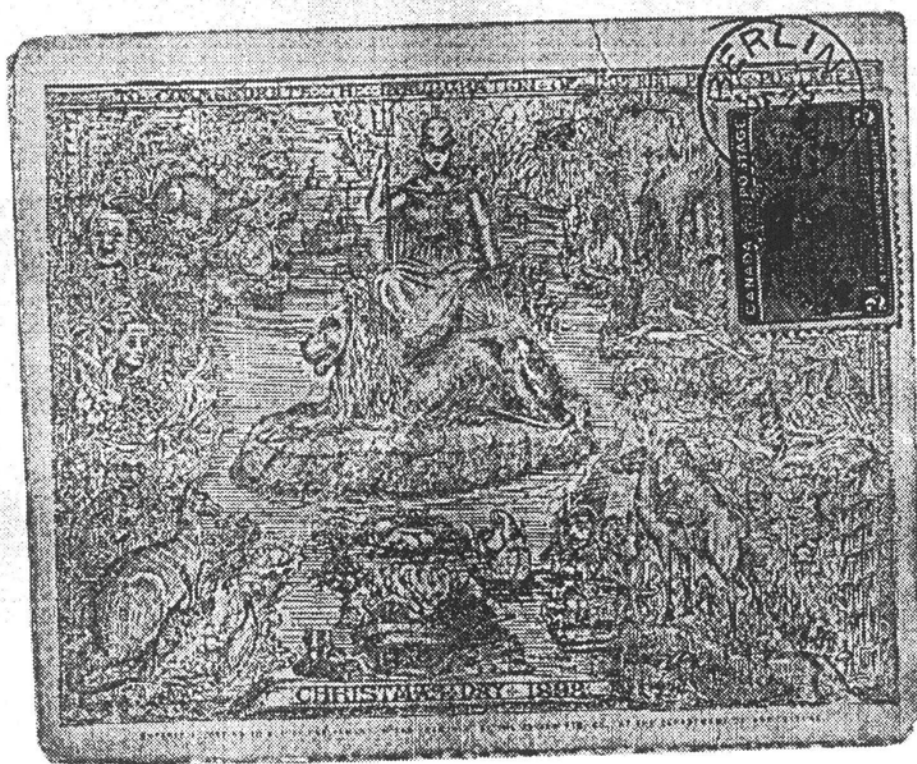
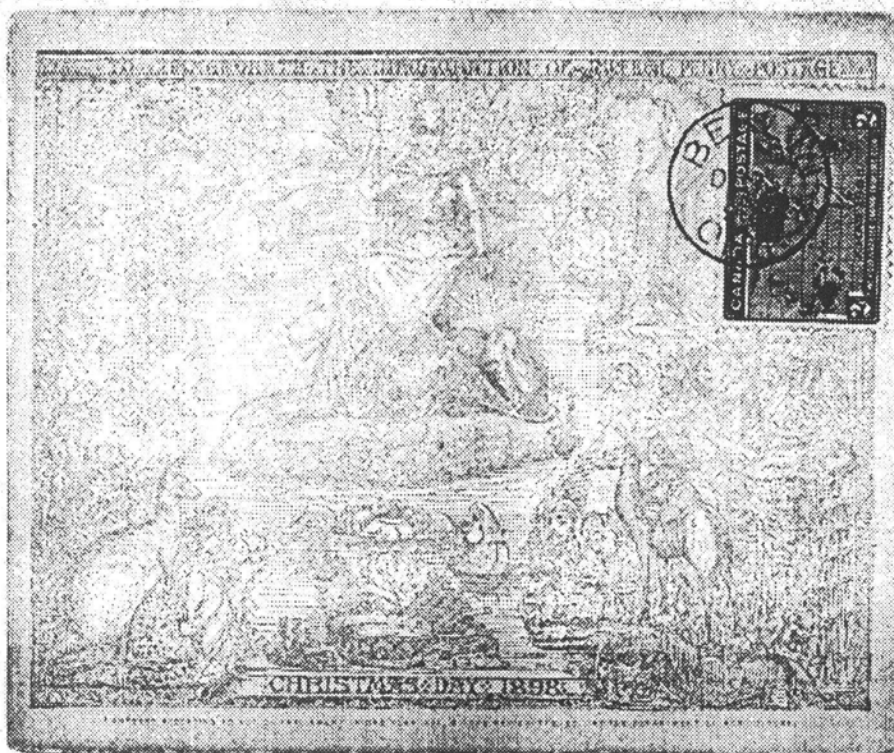
Request for my collection : I am trying to complete a calendar for February and March 1899. The following dates are sadly missing: FE-12-99, MR-03-99, MR-19-99 & MR-26-99. Any clear strike from anywhere is welcome. If you can supply it, I invite you to send a photocopy with price requested. Thanks in advance! Roger Boisclair.





Fig. 1

Figure 1



J.T. ANDERS

Figure 2

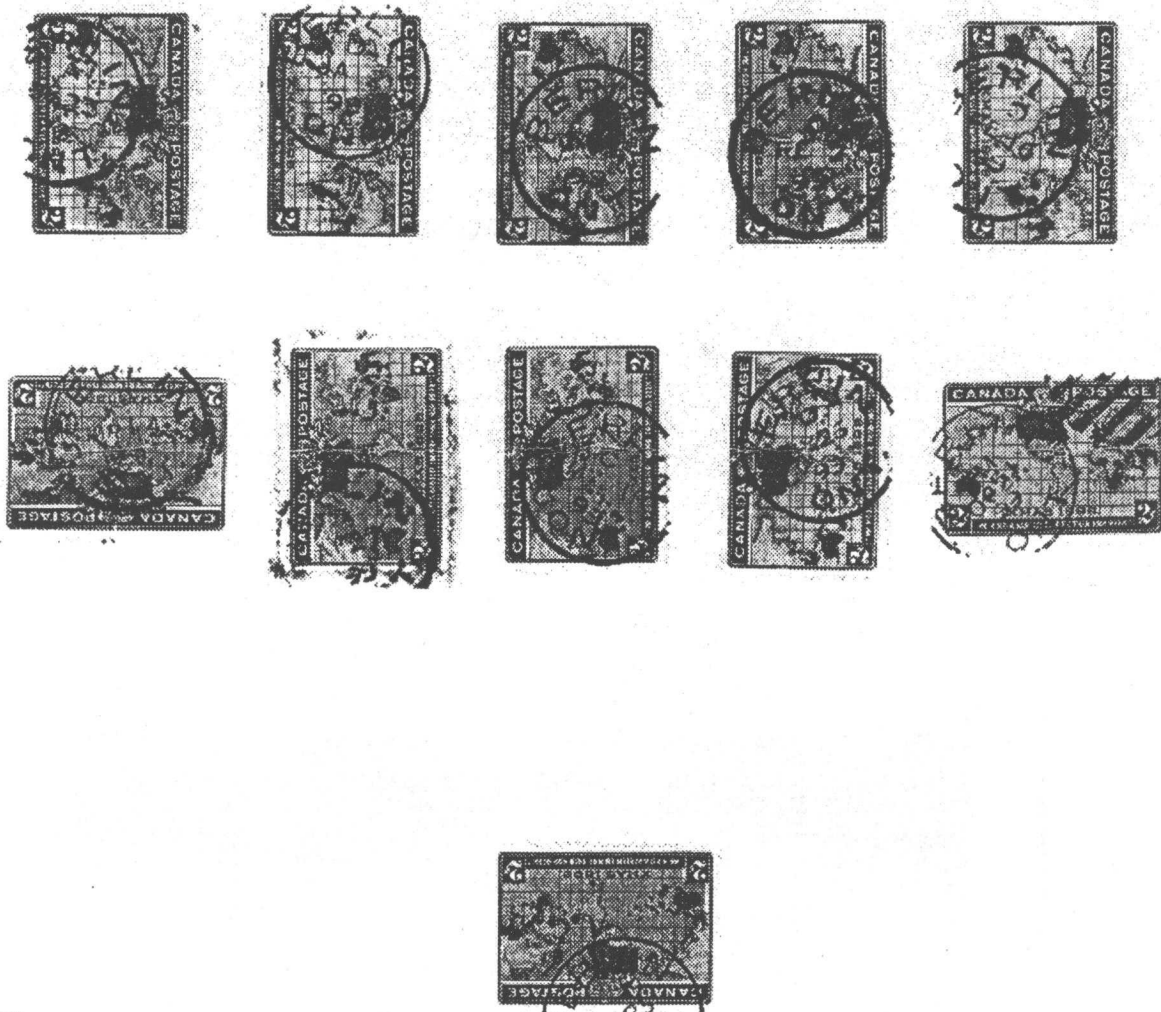
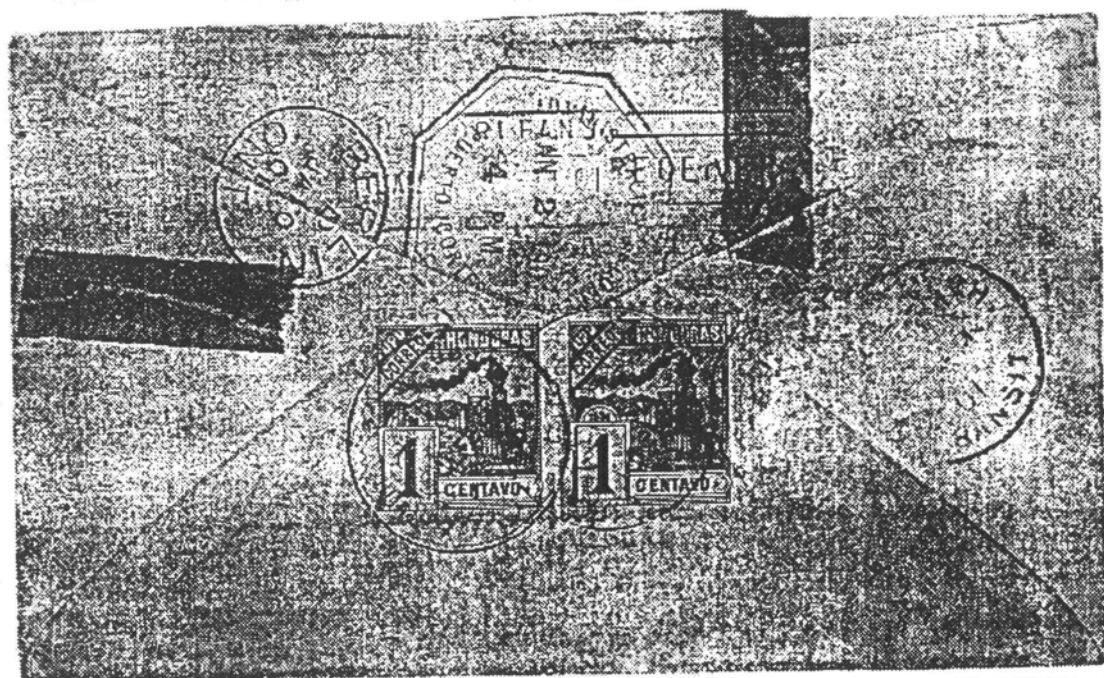
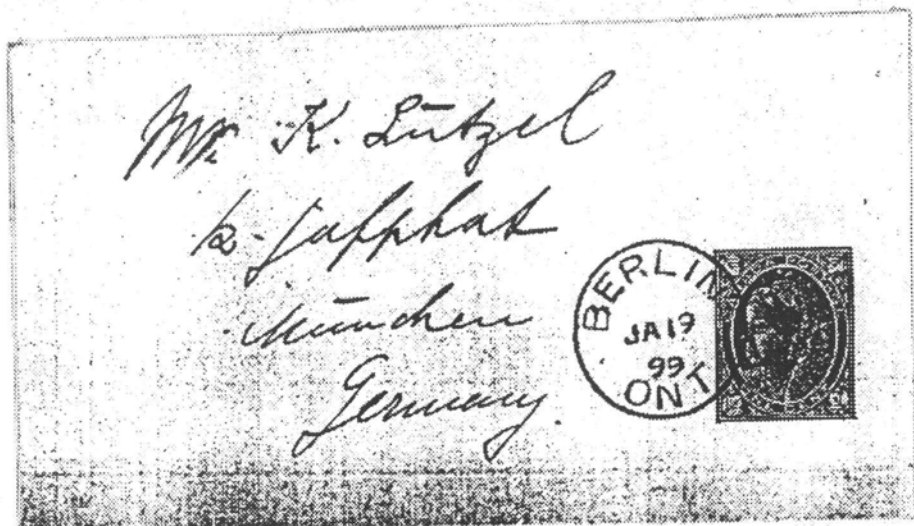


FIG. 3

J.T. ANDERS

Figure 3



J.T. ANDERS

Figure 4