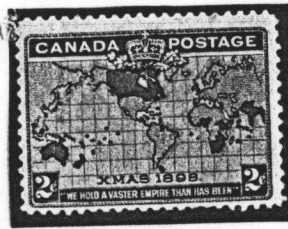


MAP STAMP

STUDY GROUP

BNAPS



Editor
W.L. Bradley #3857
122 Sherwood Ave.
Kitchener, Ont.
N2B 1K1

Issue #7 Oct. - Dec./84

Late October in Northern Ontario finds Marjorie & I trying to catch a Muskie in Georgian Bay (Last one was in 1978 - 32# - 48 inches). We've spent nearly 40 hours trolling in the last two weeks but its time now to close things up for the winter and head south. I must get this Map Newsletter typed and reproduced so that we can mail it in Nov. from Florida. To-morrow we'll try one last lime for this trophy fish!

BNAPS-SAN FRANCISCO Sept. 6,7,8/84 Sir Francis Drake Hotel.

We left for S.F. on Aug 30 to drive west through the upper midwest of U.S. This was a new area to us and brought us into contact with a Rodeo in Wyoming and Hollywood-type shows in Reno & Lake Tahoe in Nevada (including slot-machines!) The convention was up to its usual high standard and the local group gets a pat on the back for this! Our study group meeting ran into a conflict with the Order-of-the-Beaver breakfast and then a tour to the Muir Woods, only three or four Map enthusiasts hung around for our meet ing. It really wasn't worth the effort! However I can appreciate the dilema. In Virginia Beach two years earlier I chose the tour of the Navy Yard over the RPO study group meeting. Either we're at a stamp convention or we're at a txourist attraction!! Which one takes precedence?

Sunday the 9th found us driving north to Vancouver to visit our daughter at Whistler B.C. (90 miles N. of Vancouver) with stops at Crater Lake National Park and Mount St. Helens. On the 15th we boarded the M/S NOOR-DAM for a 7 day cruise to Alaska and back. By the 25th we were headed home to Ontario through the U.S. and Glacier National Park Via the northern U.S. route and the Sault. A great trip (32 days and 7200 miles!)

It was our privelage while in southern B.C. to drop in on Bob Doull at Twawwassen for an hour and say hello. We've corresponded for 8 years but never met. Bob was described at the RPO Study Group meeting at San. Fran. as one of Canada's premier philatelists - I concurr!

Another look at the Islands of the Pacific

As a result of the study that was included in #3 newsletter of July 1983 and which dealt with the names of the Islands etc. on the Map Stamp, I was contacted by Mr. Norman L. Nicholson of London, Ont., an associate editor of CARTO-PHILATELIST - the Quarterly publication of the International Society of Map Stamp Collectors, who was doing something similar on the Islands of the Pacific ocean. The following article appeared in the Oct. 1983 (Vol.28 #3) issue of their Newsletter, which adds more information on names and political jurisdiction to our study. While this is limited at the present time to the Pacific, Norm intends to also look at the Islands of the Indian Ocean and his article on this will likely appear soon in their publication, and I will reproduce it later.

From Carto - Page 8 "OUR READERS ASK--

The Book by Frederick Tomlinson on "The Canadian Map Stamp of 1898" has assigned numbers to the islands in the Pacific Ocean shown on Scott No. 85 and 86. Has anyone identified these islands by name?

Our Associate Editor Norman L. Nicholson Answers--

Mr. W.L. Bradley of Kitchener, Ontario, Canada is a member of the Map Stamp Study Group of the British North America Philatelic Society and in the July 1983 issue of the Newsletter of this group he has given the results of his study of the identification of the Pacific Islands. Using Red Plate A., he first established the latitude and longitude coordinates of the islands on the stamp and then compared them with modern maps of the Pacific. The following gives the positions as Mr. Bradley has calculated them, while readily admitting the difficulties (a 1/16th. of an inch error would change the latitude or longitude 5' to 10', added to the fact that the Red Plate "A" was rarely centered on the Black Plate). To his comments, I have added a few of my own.

No. 1) 5°N, 145°W - There is no island near this position. Christmas Island, annexed by Britain in 1888, is the nearest point of land but its position is 2°N, 157°W. It is one of the Line Islands, formerly part of the Gilbert and Ellice Islands administration and now part of Kiribati which has renamed it Kiritimati. Fanning Island (now named Tabuaeran) at 4°N, 159°W is an island in the same group. It was annexed by British in 1889 as the site for a trans-Pacific cable relay station and loomed large in Imperial thinking in 1898.

No. 2) 5°N , 135°W - There is no island anywhere near this position!

No. 3) 12°S , 148°W - The nearest islands to this position are Flint Island at 11°S , 151°W and Caroline Is. at 10°S , 150°W , both part of the Line Islands and today part of Kiribati. They are just north of French Polynesia and were leased to French commercial interests in Tahiti in 1951.

No. 4) 18°S , 141°W - This position places the island in the Tuamotu group of French Polynesia!

No. 5) 5°S , 175°W - Gardner Island in the Phoenix Group of what were the Gilbert Islands, now Kiribati, has been renamed Nikumaroro. It has a position of $4^{\circ}40'$ mins.S., $174^{\circ}32'$ mins.W. The southern Phoenix Islands were colonized by the Gilbertese between 1938 and 1940, but due to long droughts, permanent settlement on them ceased between 1955 and 1964.

No. 6) 15°S , 167°W - Rose Island, part of eastern Samoa is at $14^{\circ}32'$ mins.S., $168^{\circ}11'$ mins.N. In 1898, all of Samoa (east and west) was under four power government consisting of Great Britain, Germany, the USA, and the local native government.

No. 7) 18°S , 152°W - This position is on the western edge of the Society archipelago of French Polynesia but the southern Cook Islands extend to 156°W and they had been proclaimed a British protectorate in 1888.

No. 8) 9°S , 160°E - This location is quite evidently in the Solomon Islands, which became a British protectorate in 1893. The capital, Honiara, has a position of $9^{\circ}28'$ mins.S., $159^{\circ}52'$ mins.E.

No. 9) 19°S , 178°E - This ^{IS THE} position of the island of Kandarua in the Fiji group which was ceded to Britain in 1874.

No. 10) 26°S , 166°W - Tonga extends from 15° to 23°S and 137° to 177°W , but it did not become a British protectorate until 1899!

Thanks Norm!

Projects for this Winter:

1. SQUARED CIRCLE CHECK LIST. At the Ottawa convention of BNAPS in Sept./81 I was given a comprehensive check list of Canadian Stamps on which one might reasonably expect to find a squared circle cancellation and the towns involved. This, of course, included the Map Stamp as well as others of the 1900 era. It had been produced by W.G. Moffat and was to be used as a companion document to his book "the Squared Circle Postmarks of Canada". Over the last three years it has proved invaluable in recording the cancellations that came my way. Also Ron Winmill writing in 1982 in his book "The Evolution of Imperial Penny Postage and the Postal History of the Canadian 1898 Map Stamp" devotes 20 pages to the subject

and also provides a check list. Ron's book is printed on glossy paper and bound in hard cover and I am reluctant to deface it with record keeping of my Square Circle cancellations, so I've continued to use my old Moffat list. However, at this years convention of BNAPS and at the seminar held by the Squared circle Cancellation Study group, I inquired of Gary Arnold, the new editor of their newsletter, whether I could use their data sheet as the basis for a separate listing applicable to Map Stamps only. Gary has sent me a nice new blank copy with some updated information just in the last month. Ron has also sent me additional data on cancellations and these will be all checked against each other for duplication etc. If Marjorie's typewriter holds out - all this will be reproduced - for the Map stamp only - on 3 ring binder paper suitable for inclusion in an album that houses your squared circle collection. I need one for mine, and I hope others will use it too!

2. RPO CHECK LIST. Some time ago, I discussed a similar project for RPO cancels on Map stamps with Dave McCain, the editor of the RPO newsletter and we agreed that this would be a worthwhile project. It would be composed of data taken from Lewis Ludlow's excellent reference work "Catalogue of Canadian Railway Cancellations and Related Transportation Postmarks". The cancellations listed therein are not segregated by stamps but it is possible to pick out the ones used during the Map period and it is reasonable to expect that these exist on copies of the stamps. Bill Robinson of Victoria B.C. is the new editor of the RPO newsletter and this project will be discussed with him and Lewis Ludlow's concurrence sought.

3. OTHER CHECK LISTS Opportunities exist for other check lists to reproduce and possibly expand the present data in Winmill's book and in "Canadian Duplex Cancellations" by Smythies on Duplex Cancellations, as well as other types such as Split Rings, CDS'S and Rollers. Anybody want to help me out with any of these? No album of selective cancellations is complete unless it also contains a record of what exists or what might exist on the Map stamp. I suppose Frank Campbell's book on Canadian Post Offices of the nineteenth century would be a good basis on which to start all of these.

PLATING ARTICLES in Topics - This project has been delayed pending a decision to switch to a publication, sponsored by BNAPS - two meetings have been held with Mike Street and Allan Steinhart (incharge of Handbooks) and I guess the ball is in my court, although Mike has article #5 which is a "Sequence of Inspection". He is reluctant to use it because it overlaps so much with the first four articles. The bottle-neck is now the production (by me) of 200 detailed sketches showing the

Red Plate varieties which will be suitable for reproduction in handbook form. Allan & I have to get together during the next month to work on the procedures and style which the printer can adapt to.

INTERESTING LETTERS

1. Ray Horning. Ray's company has put him on medical disability and asked him to write the company history this winter. That, with his work with "Parkinson Organization" will keep him busy and away from his Maps.

2. Ron. Winmill Three letters during Sept. Ron moved to ~~Ottawa~~ for a short while but is back again in Byron. He does a lot of research on old manuscripts and periodically sends me notes on old Map articles he had found (three this time!)

3. Leo. Scarlett Two letters, the first a change of address to P.O.Box 448

Fresh Meadow Station
Flushing, New York. 11365

and the other containing some Map stamps for trade. I'll see what Canada I can send him.

4. John Jamieson - Saskatoon Coin & Stamp Centre. Two years ago John received some Progressive Map Proofs from a client in Ottawa who was linked somehow with Sir William Mulock. These were offered for sale and I purchased a quantity of them. This led to an inquiry as to their origin and I wrote directly to the source. The story makes interesting reading and adds further to the lore surrounding Mulock. I'll use the material in the next newsletter.

5. Sandy Mackie - Aberdeen Scotland. Three page letter! Sandy has now retired and is working on his ~~garden~~^{garden} and the Admirals. He took a trip up the Rhine in June. He's also busy with C.P.S. of G.B. and the Congress of Scottish Philatelic Societies for 1985.

6. Mark Larkin New York City, N.Y. Our letters crossed in the mail (#6 newsletter) so I haven't heard anything this summer.

7. John Burnett Sidney Ohio. John sent me Study Group letter #5 and I had the opportunity for several discussions with him in S.F. I think it would be advantageous for Study Group Editors to exchange Newsletters. We have a lot in common!

8. Ralph Trimble Editor - Re-entry Study Group Newsletter. Just a short note acknowledging our Newsletter #6 with some comments on his efforts to complete a re-entry collection of Maps. He needs three more positions. I hope I can help.

9. John Neff Prince George, B.C. BNAPS #4011
John inquired about our study group and I sent him details as well as copies of Newsletters 4,5,& 6. He is listed as a new member in this issue.

10. Gary Arnold Grand Ledge, Mi. Editor of the Squared Circle Newsletter. Elsewhere I have provided details of Gary's letter and I should say how much I enjoyed meeting he and his wife in S.F. Gary is a Civil Engineer, as I am, and is actively engaged in the design of waste-water treatment plants etc. in Michigan.

NEW MEMBERS

- #33 R.M. Doull
5209 Upland Drive
Tsawwassen, B.C. V4M 2G3
- #34 Charles Franklin
19 Broadview
Tuscaloosa, Alabama, USA 35405
- #35 Jack Wallace
802 - 670 Dallas Rd.,
Victoria, B.C. V8V 1B7
- #36 J.P. Neff
Cranbrook Hill Rd.,
Site 16, Cmp. 4
R.R. #6 Prince George B.C. V2N 2J4
- #37 Jim Brown
508 - 1550 - 8th Street S.W.
Calgary, Alberta T2R 1K1

Well that is it for now, still no Muskie, so the rods are hung up for this year.

mb

W.L. Bradley